



How to splice poster LED via HDMI cables

HIKVISION EU PRODUCT TEAM

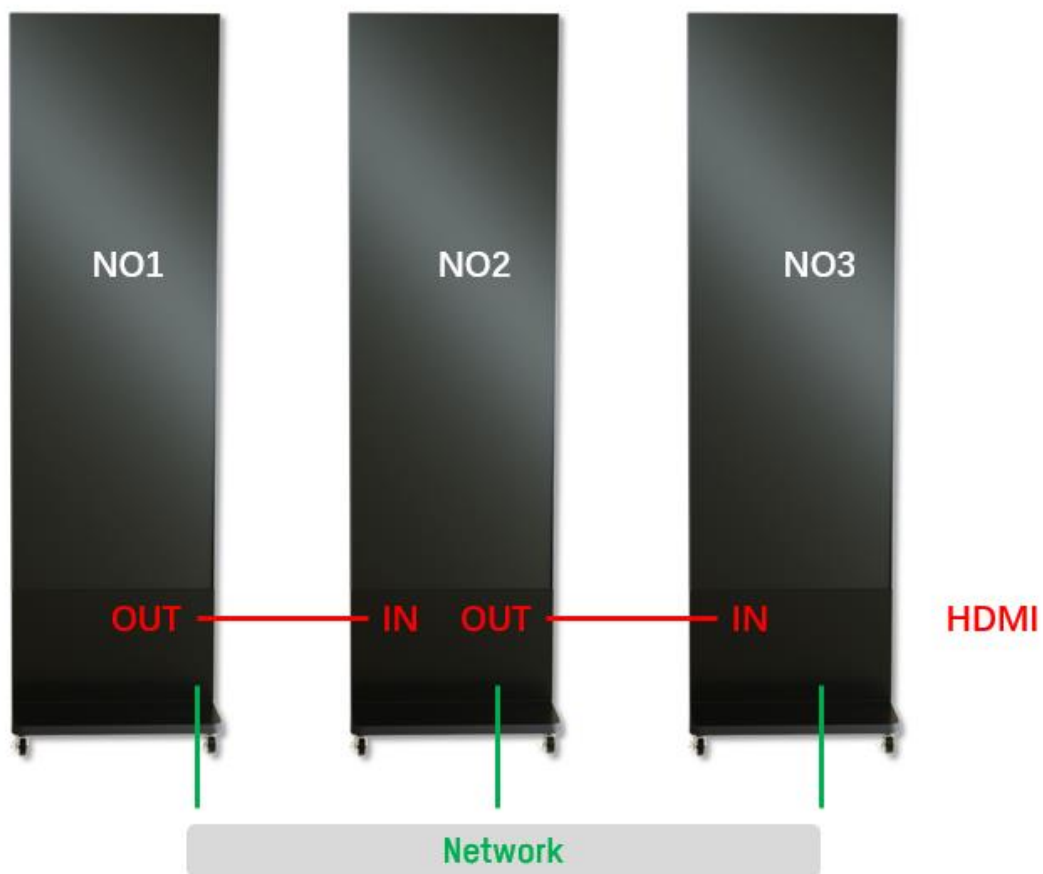
2023-5-1

Max 10pcs poster LED could be horizontally spliced and below is guidance how to realize the HDMI cable connection (which has best frame synchronization effect)

Connection

Principle of poster LED splicing is similar like LCD daisy chain function, required cable connection is:

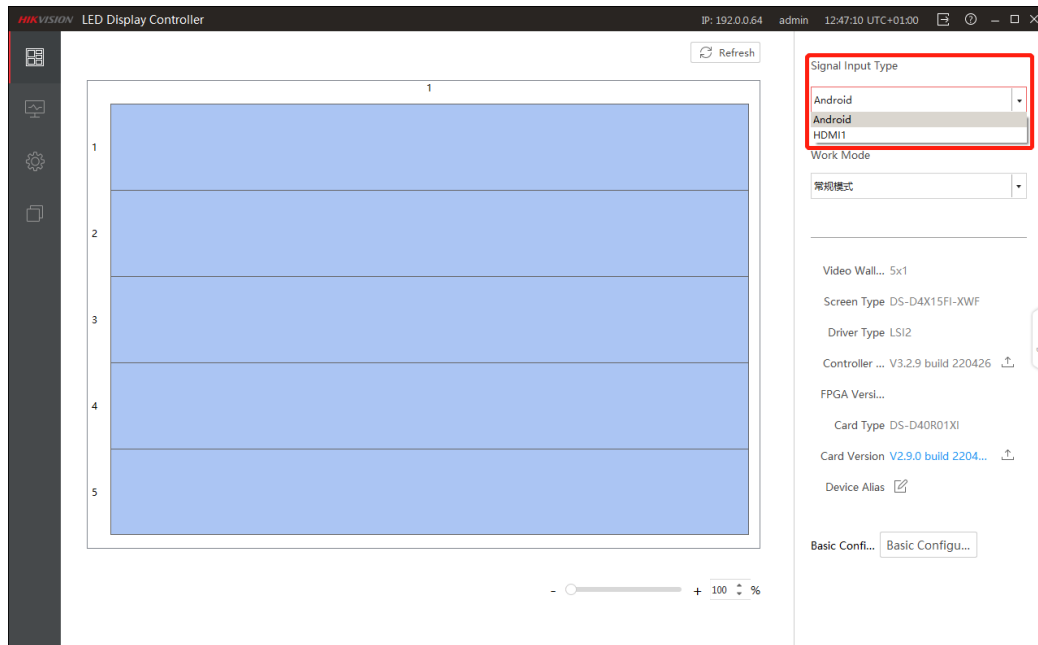
- ① All poster LED connect to same network
- ② Serial connect the poster LEDs one by one by HDMI OUT and IN



Change Input Source

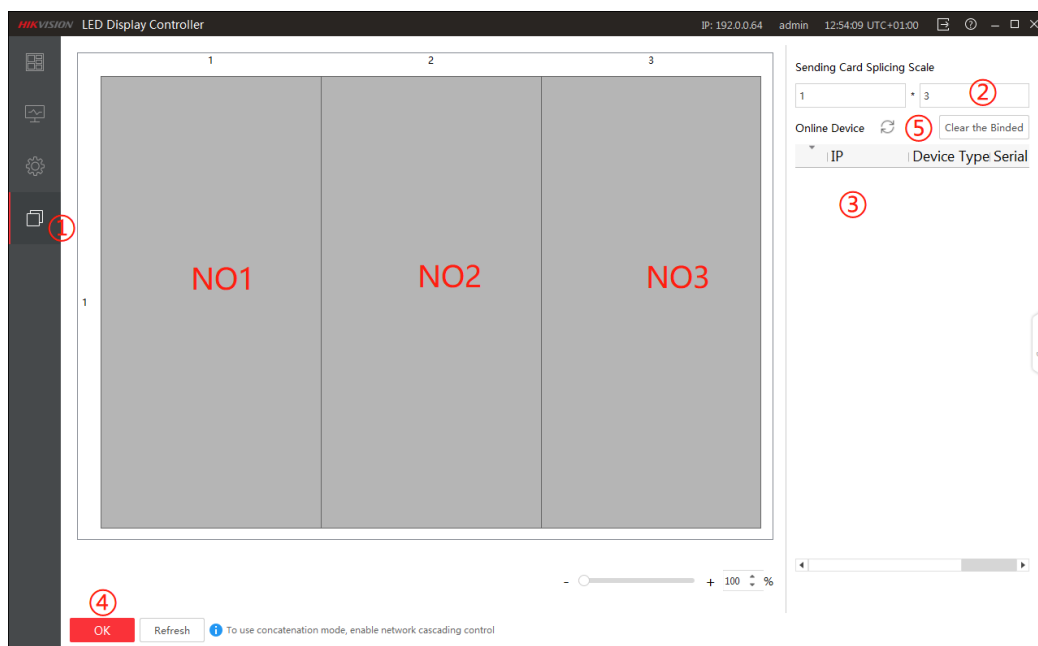
Still take above setup for example, poster NO2 and NO3 signal input type should be selected as HDMI, and poster NO1 as Android to provide the input source (You can also use your own local source, then poster NO1 needs to be selected as HDMI, and you need to connect your source to poster NO1 HDMI IN)





Configure splicing

After above setup, the posters will display same copied image from poster NO1, to splice image, go to *Multi-screen Display Configuration*, create a layout of 1 * 3, and link online posters one by one as how they are physically set up. Click *OK* the splice will take effect, and don't forget **step ⑤** to *Clear the Binded*, which is in purpose to achieve better frame synchronization effect



See Far, Go Further

