



How to configure 2FM2466 in NVR

Title:	How to configure 2FM2466 in NVR	Version:	v1.0	Date:	03/30/2021
Product:	Network Video Recorder			Page:	1 of 12

How to configure 2FM2466 in NVR

This article is mainly about the Instructions of NVR adding alarm (2FM2466). At present, I-series NVR and third-generation Acusense NVR have customized versions to support alarms.

Custom Firmware:

FM2466 software

/03 NVR/04 Firmware & Release Note/12 others/FM2466&ADAM tool and firmware/tools/


Acusense NVR (DS-xxxxNXI-I)


/03 NVR/04 Firmware & Release Note/12 others/FM2466&ADAM tool and firmware/Acusense NVR/

I series NVR (DS-xxxxNI-I)

/03 NVR/04 Firmware & Release Note/12 others/FM2466&ADAM tool and firmware/[76 77 86 96 NI-I]/

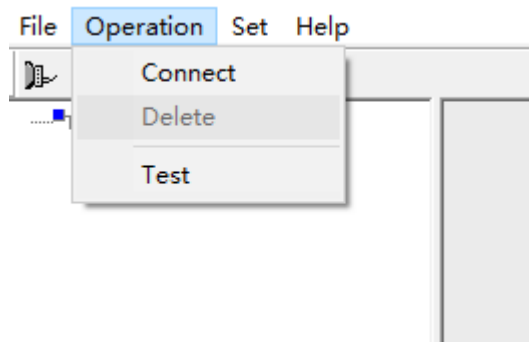
1、Open tool software

 Sys_32.exe

 Sys_64.exe

2、Search

Search as the following picture shows (please make sure the FM2466 device and PC that runs the software are on the same network)

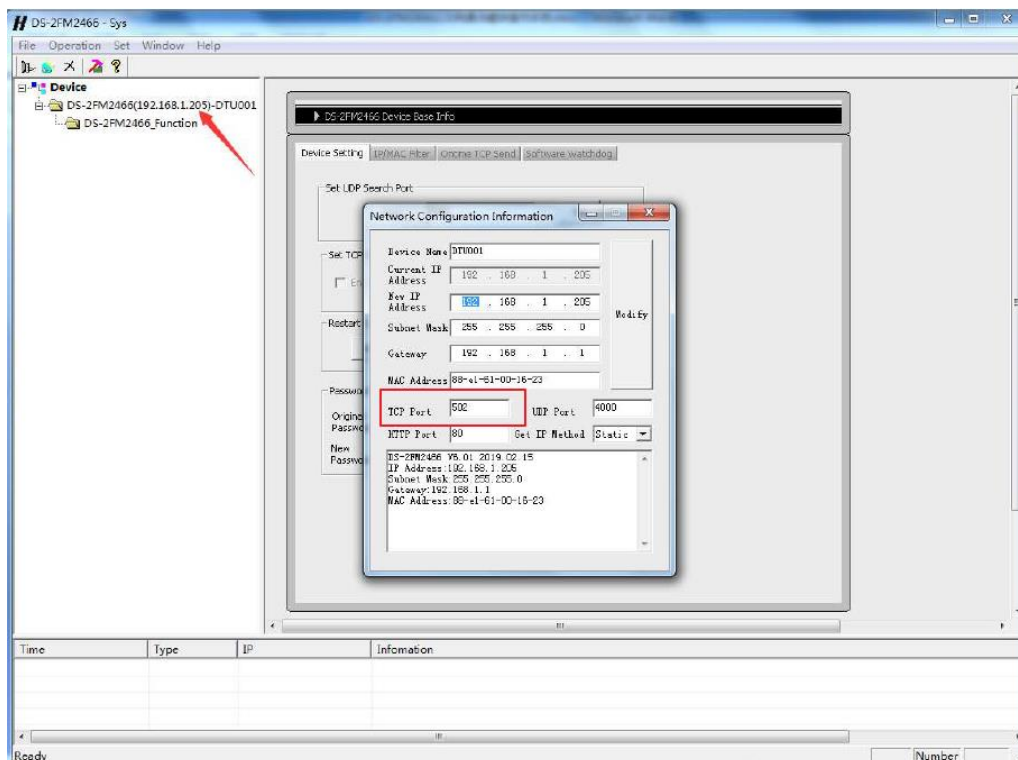


Click the **Connect Module** button and the following window pops up, choose the **Dynamic Connect** button->Confirm that TCP port is 502->Click **Search Devices**

Title:	How to configure 2FM2466 in NVR	Version:	v1.0	Date:	03/30/2021
Product:	Network Video Recorder			Page:	2 of 12

devices found are as follows:

Click device and enter the password according to tip. **Password: 666666** Make sure TCP port is 502



3. Set Input and Output Mode

DI mode is DI Input (the circled part on the left)

Set the DO mode as Instant Output (the circled part on the right)

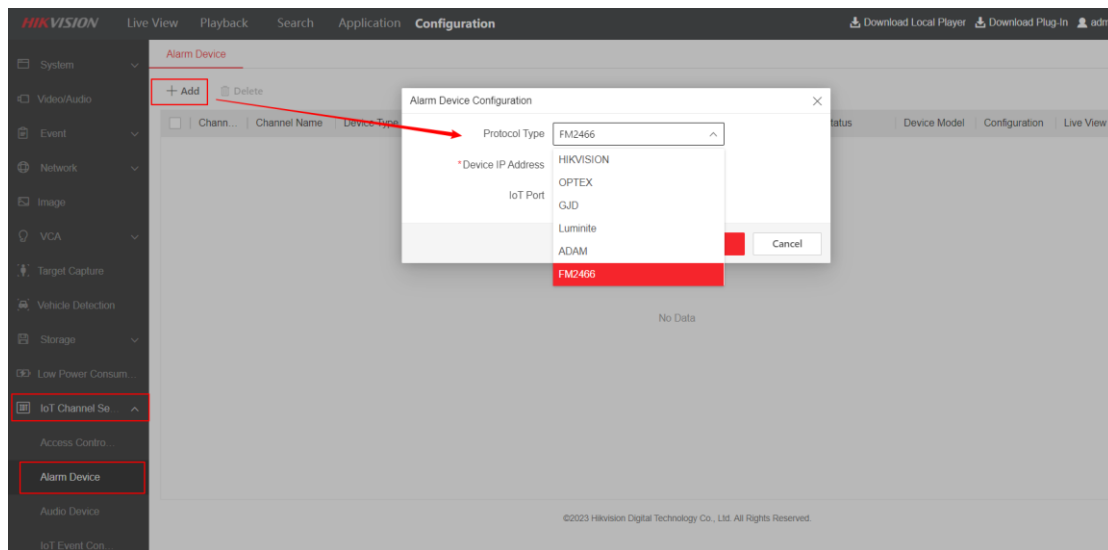
Title:	How to configure 2FM2466 in NVR	Version:	v1.0	Date:	03/30/2021
Product:	Network Video Recorder			Page:	3 of 12



4. Alarm Type (it relates to NVR configuration)

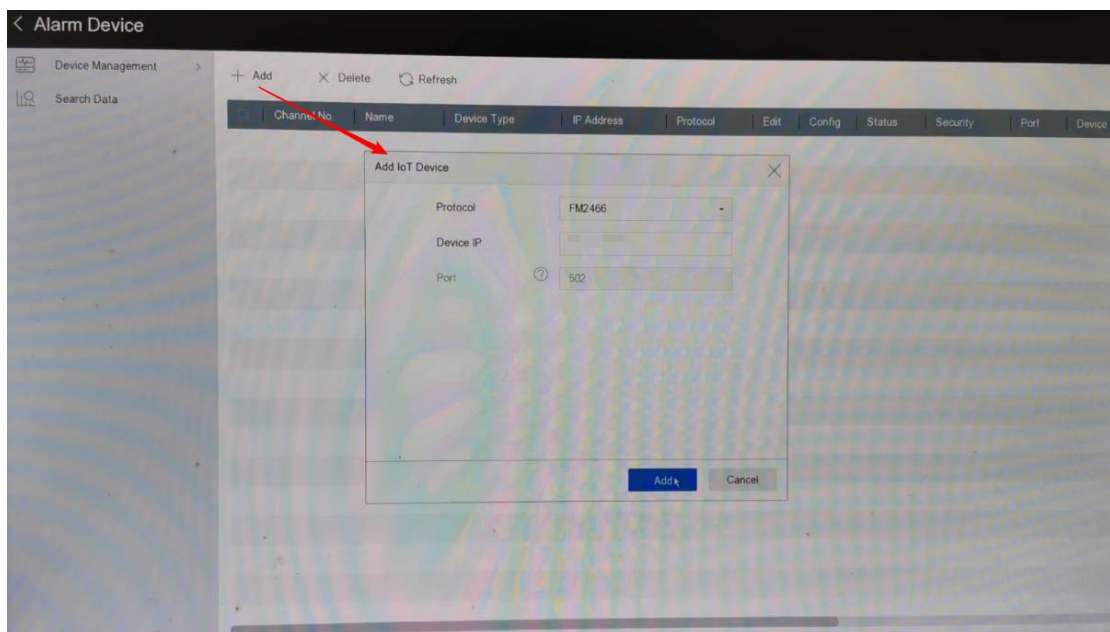
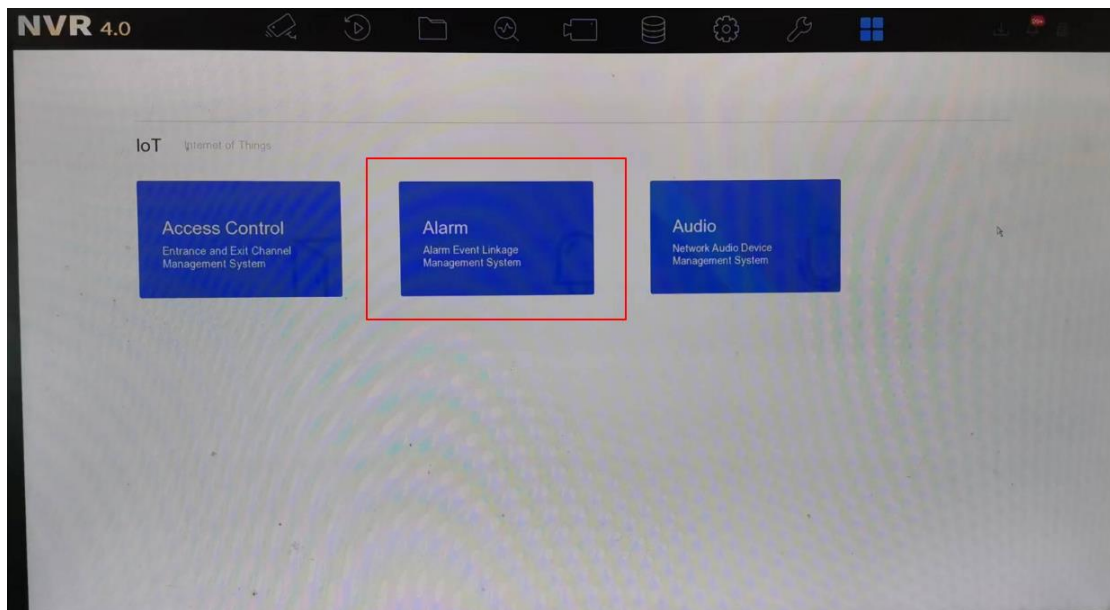
(1) add alarm device

Enter webs, configuration->IoT channel setting->Alarm Device as the picture below



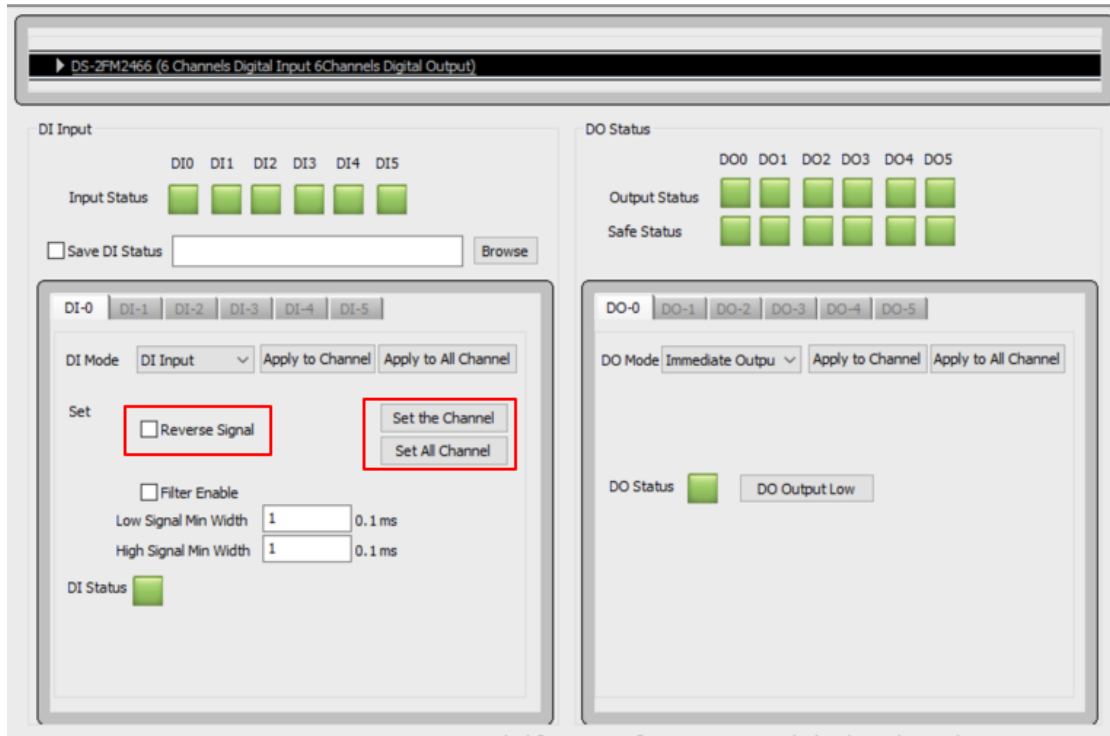
Or enter GUI

Title:	How to configure 2FM2466 in NVR	Version:	v1.0	Date:	03/30/2021
Product:	Network Video Recorder			Page:	4 of 12

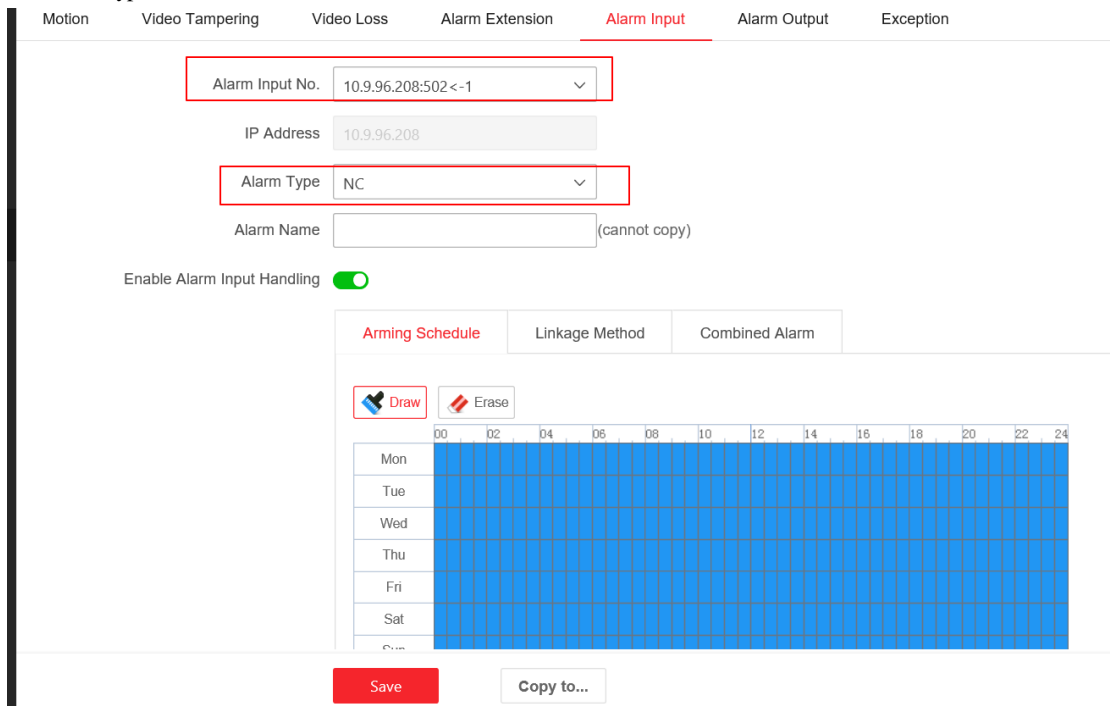


(2) Set all Input Type to low potential (green)

Title:	How to configure 2FM2466 in NVR	Version:	v1.0	Date:	03/30/2021
Product:	Network Video Recorder			Page:	5 of 12



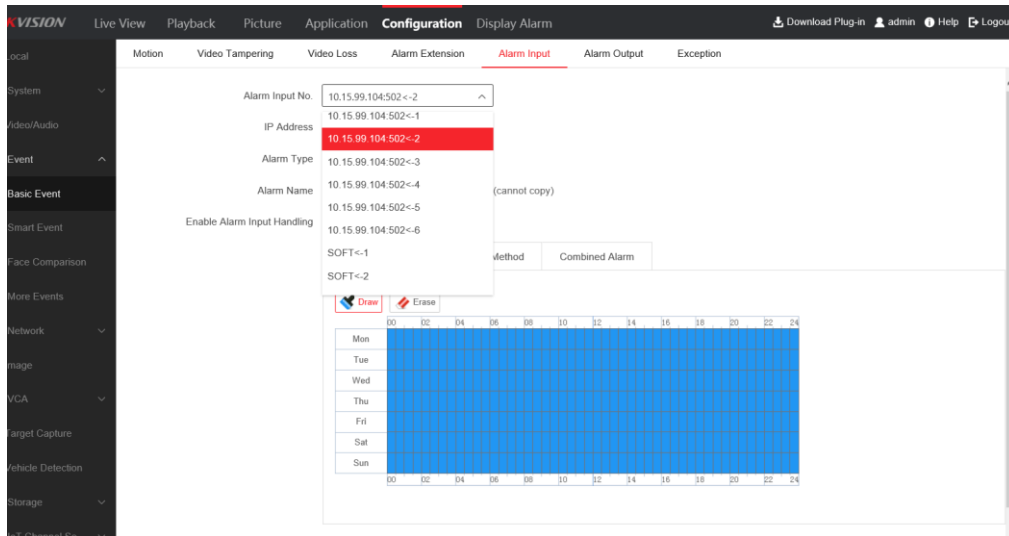
Change the Alarm Type of FM2466 on NVR to NC



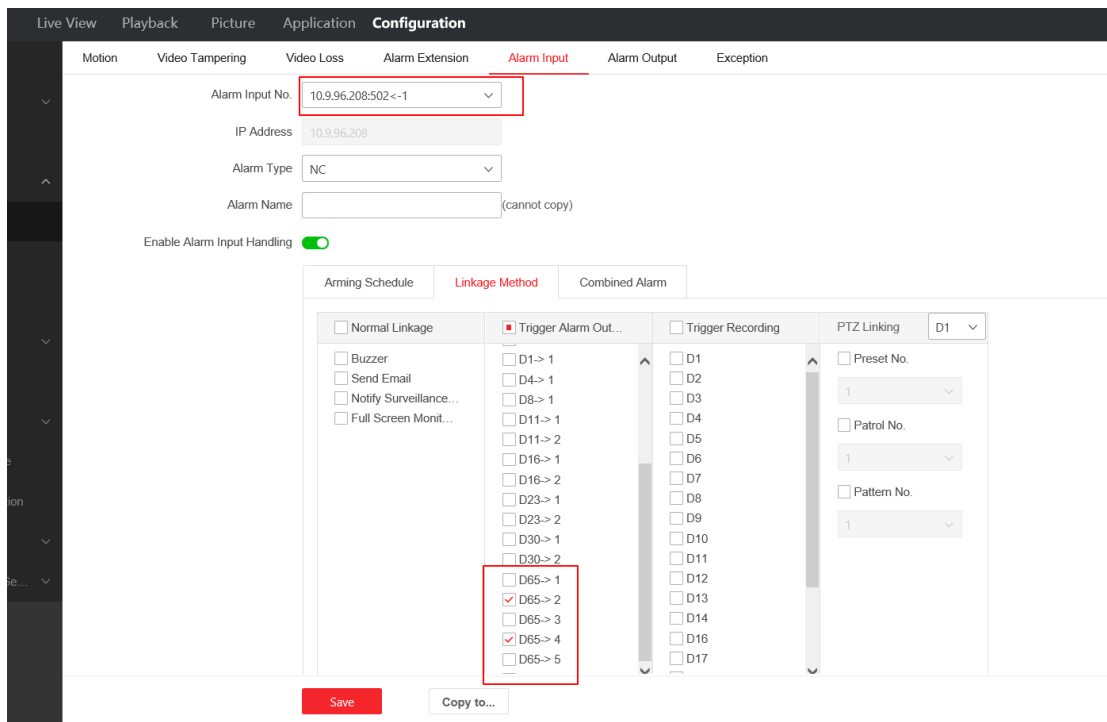
5. Alarm In Configuration

Enter webs, configuration->Event->Basic Event->Alarm In as the picture below

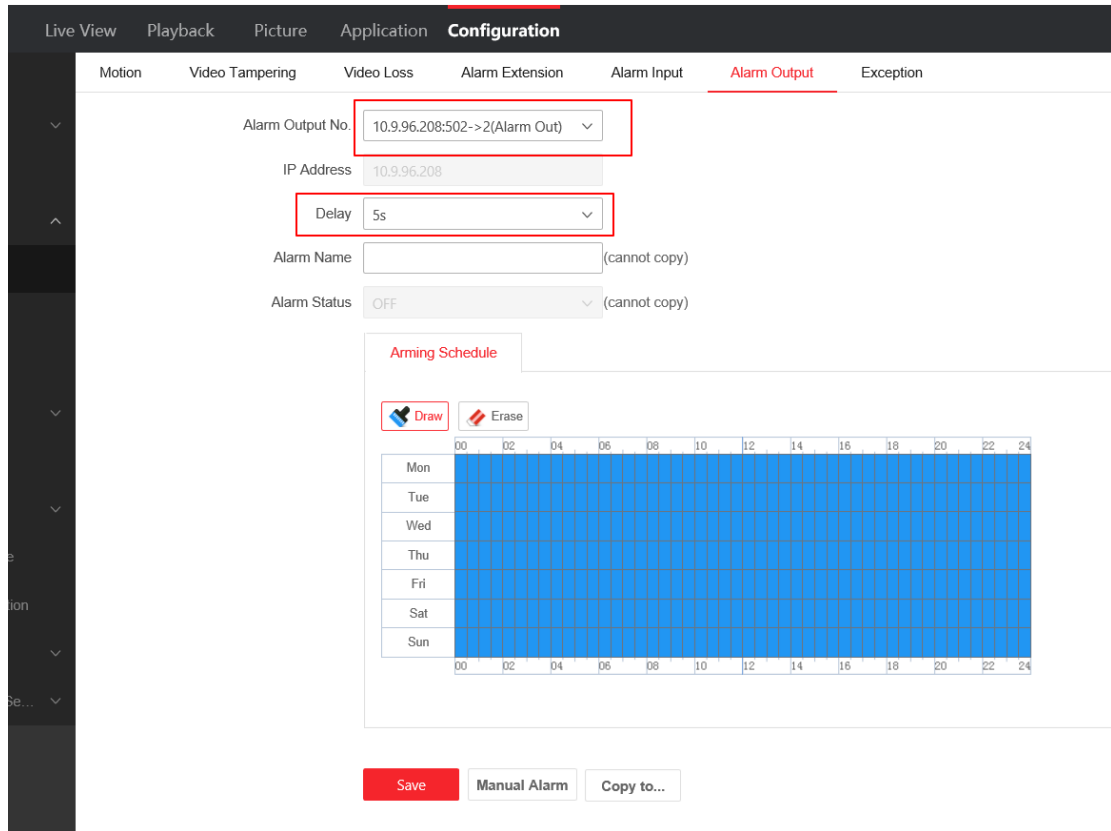
Title:	How to configure 2FM2466 in NVR	Version:	v1.0	Date:	03/30/2021
Product:	Network Video Recorder			Page:	6 of 12



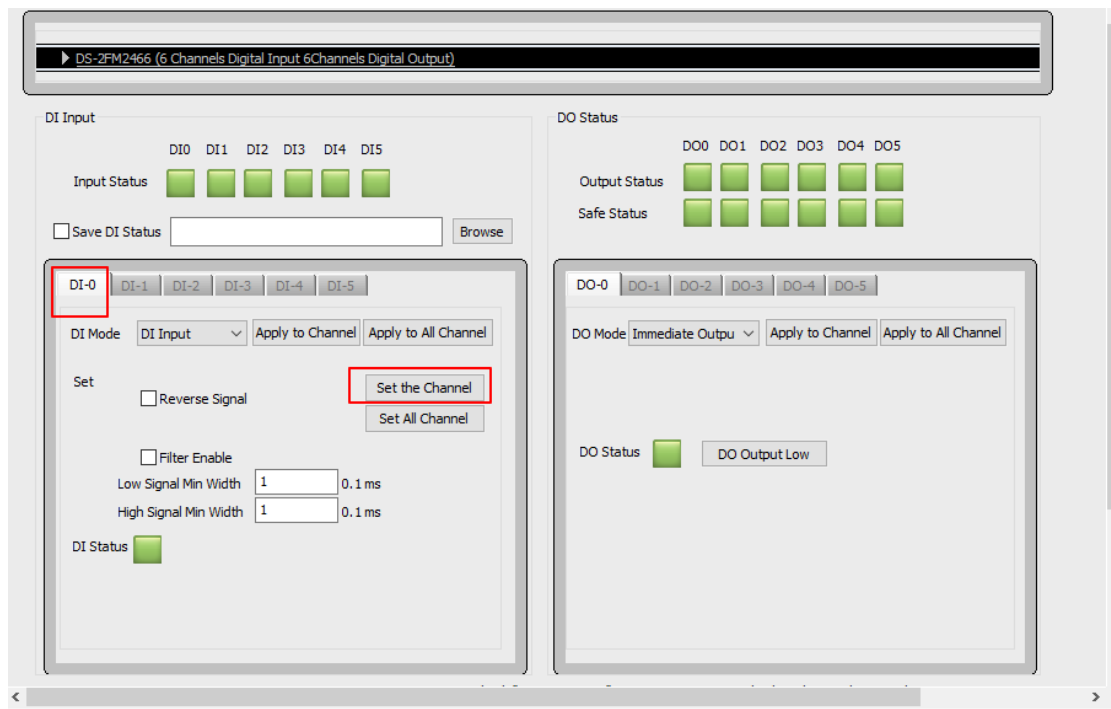
The following example shows the verification of the Alarm & Input Output State: The Alarm Input channel 1 links with the Alarm Output 2 and 4.



Title:	How to configure 2FM2466 in NVR	Version:	v1.0	Date:	03/30/2021
Product:	Network Video Recorder			Page:	7 of 12



Manually trigger channel 1, Alarm Output 2 and 4 respond; 10s after the alarm input is cancelled (the default time for an alarm is 5s and delay time is 5s), the output state turns back to the original state



Title:	How to configure 2FM2466 in NVR	Version:	v1.0	Date:	03/30/2021
Product:	Network Video Recorder	Page:	8 of 12		

DS-2FM2466 (6 Channels Digital Input 6Channels Digital Output)

DI Input

Input Status: DI0 DI1 DI2 DI3 DI4 DI5

Save DI Status

DI-0 DI-1 DI-2 DI-3 DI-4 DI-5

DI Mode: DI Input

Set: Reverse Signal

Filter Enable

Low Signal Min Width: 0.1 ms

High Signal Min Width: 0.1 ms

DI Status:

DO Status

Output Status: DO0 DO1 DO2 DO3 DO4 DO5

Safe Status: DO0 DO1 DO2 DO3 DO4 DO5

DO-0 DO-1 DO-2 DO-3 DO-4 DO-5

DO Mode: Immediate Output

DO Status:

DS-2FM2466 (6 Channels Digital Input 6Channels Digital Output)

DI Input

Input Status: DI0 DI1 DI2 DI3 DI4 DI5

Save DI Status

DI-0 DI-1 DI-2 DI-3 DI-4 DI-5

DI Mode: DI Input

Set: Reverse Signal

Filter Enable

Low Signal Min Width: 0.1 ms

High Signal Min Width: 0.1 ms

DI Status:

DO Status

Output Status: DO0 DO1 DO2 DO3 DO4 DO5

Safe Status: DO0 DO1 DO2 DO3 DO4 DO5

DO-0 DO-1 DO-2 DO-3 DO-4 DO-5

DO Mode: Immediate Output

DO Status:



See Far, Go Further