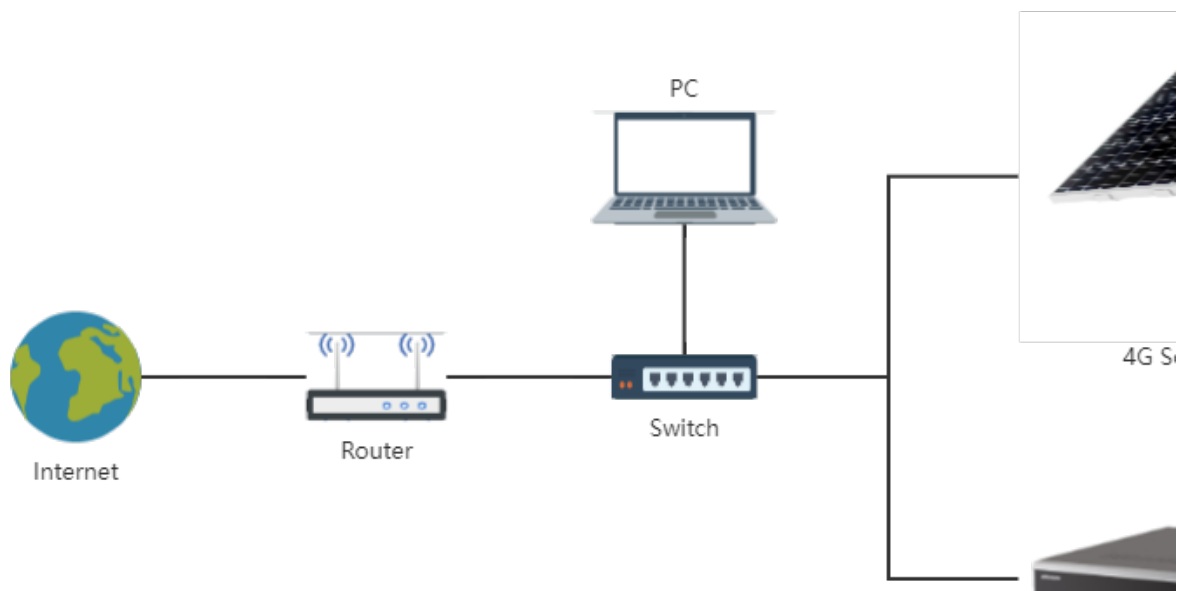




## **How to add solar camera on NVR through ISUP protocol**

## How to add solar camera on NVR through ISUP protocol

---

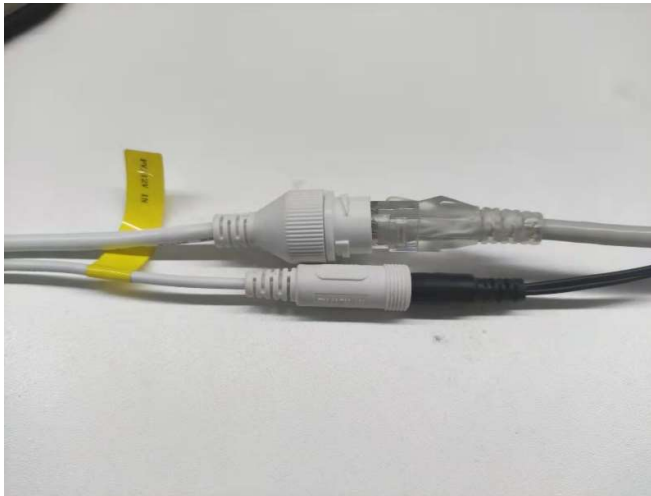
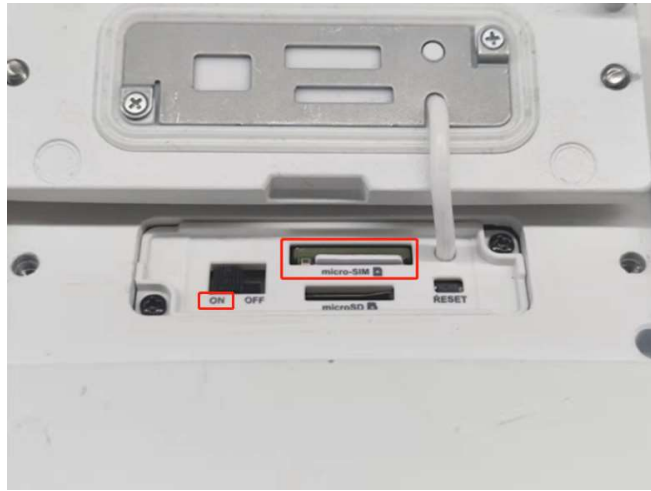


- 1. Connect the camera to the power supply and network cable, turn the camera switch to ON, and insert the 4G SIM card. Upgrade Solar camera and NVR to custom firmware<sup>[1]</sup>. Ensure that the camera, NVR and router are under the same router network segment, and the router connect to the external network.**

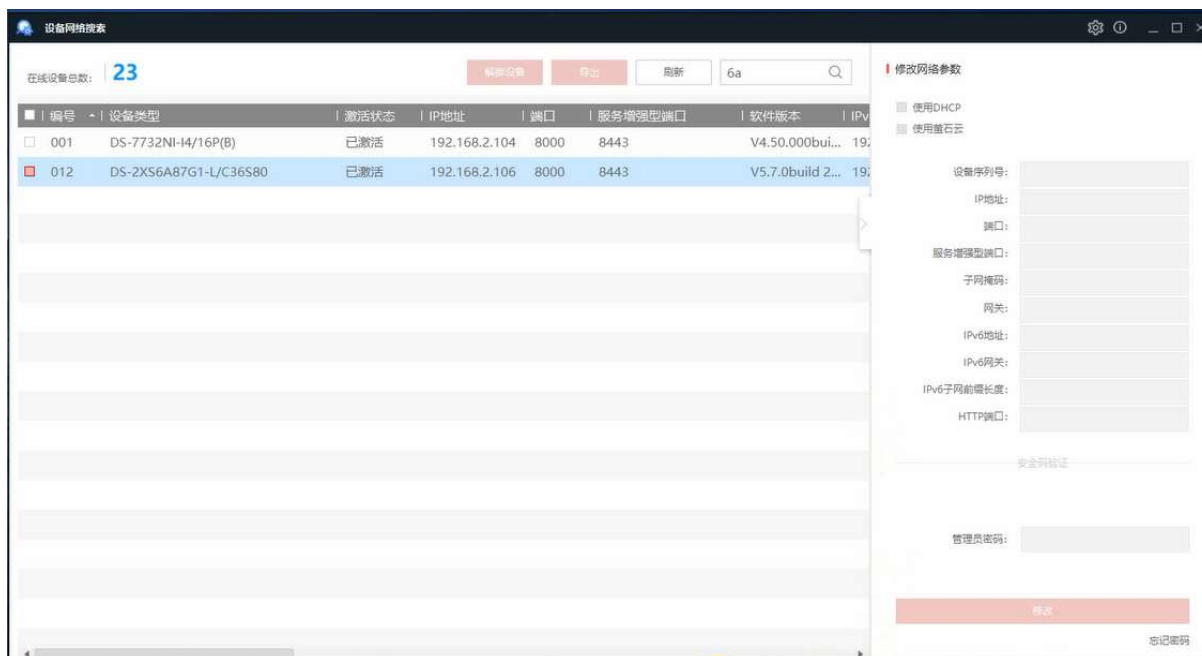
[1]:For the way to obtain customized firmware, please contact the technical support in the corresponding area

## How to add solar camera on NVR through ISUP protocol

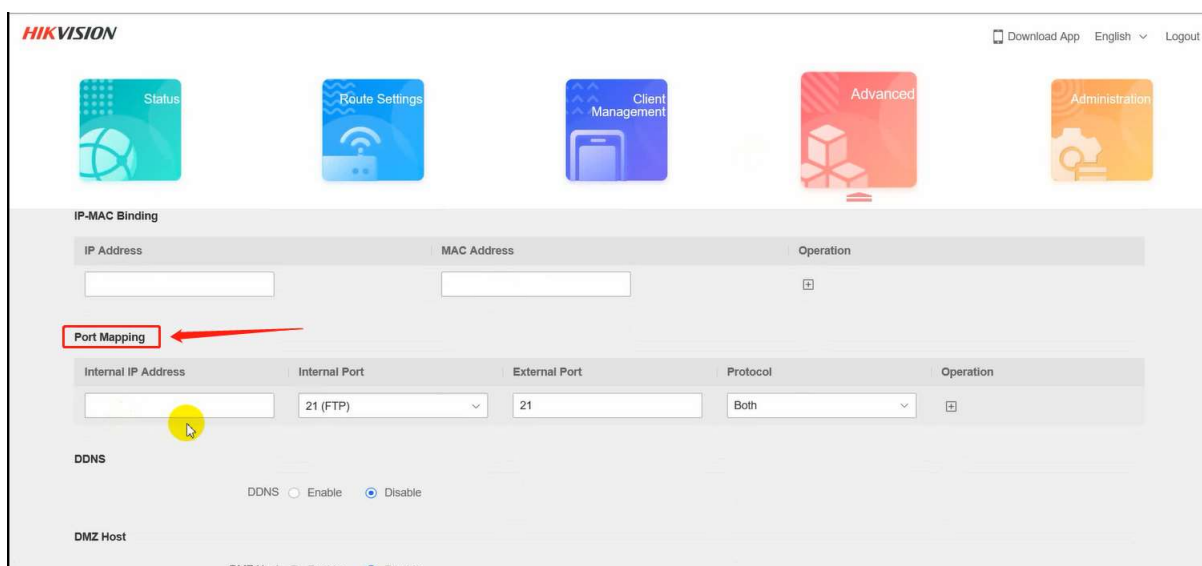
---



## 2. Open SADP, find NVR and solar camera, and double-click to open it.



## 3. Open port mapping page of the router



#### 4. In the NVR webpage, network setting, record the external port of port 80<sup>[1]</sup> in NAT and the following 4 ports<sup>[2]</sup> in ISUP service setting

[1]: Port 80: receive camera HTTP alarm

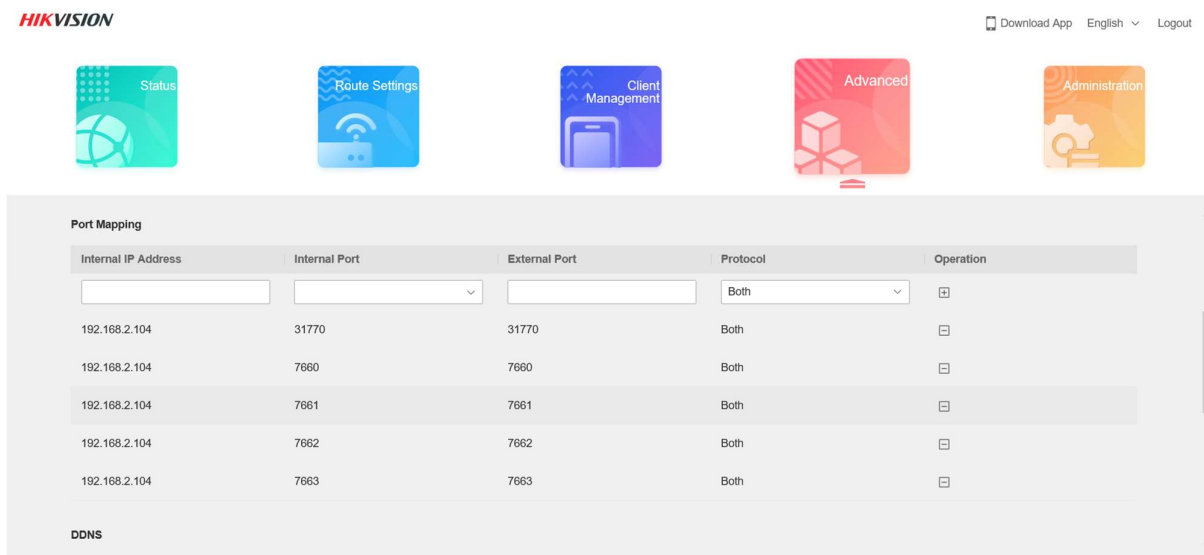
[2]: The purpose of each port is stated

The screenshot shows the NAT configuration page in the Hikvision NVR web interface. The 'NAT' tab is selected, and the 'Enable UPnP™' checkbox is checked. A table lists port mappings for various services. The HTTP row is highlighted with a red box.

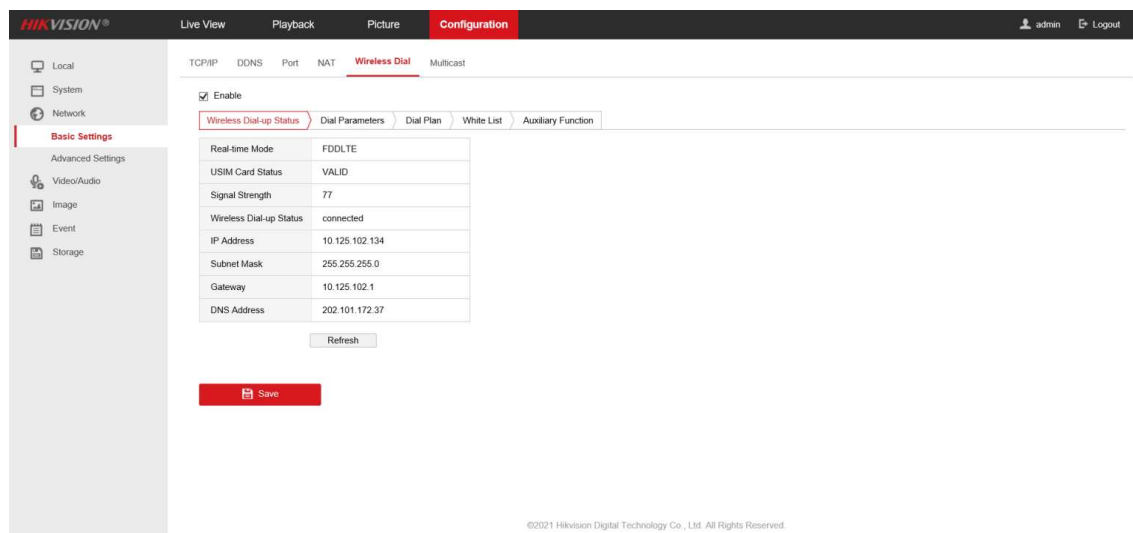
Port Type	External Port	External IP Address	Internal Port	Status
HTTP	31770	115.192.85.52	80	Valid
RTSP	58974	115.192.85.52	554	Valid
Server Port	40595	115.192.85.52	8000	Valid
HTTPS	36294	115.192.85.52	443	Valid
Enhanced Servi...	34181	115.192.85.52	8443	Valid

The screenshot shows the ISUP Service Settings page in the Hikvision NVR web interface. The 'ISUP Service Settings' tab is selected, and the 'Enable' checkbox is checked. Four input fields are shown for Proxy Service Port, Alarm Service Port, Media Live View Port, and Media Playback Port. The input fields are highlighted with a red box.

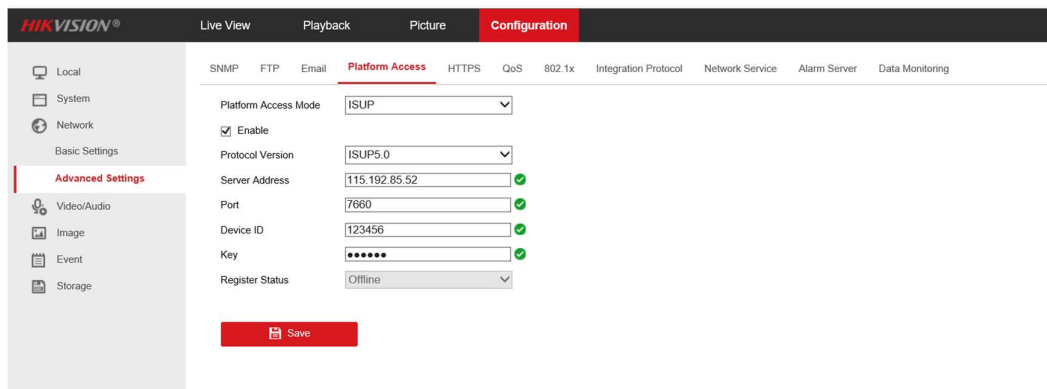
**5. Port mapping: map the five ports just recorded to the outside. The external port needs to be consistent with the internal port.**



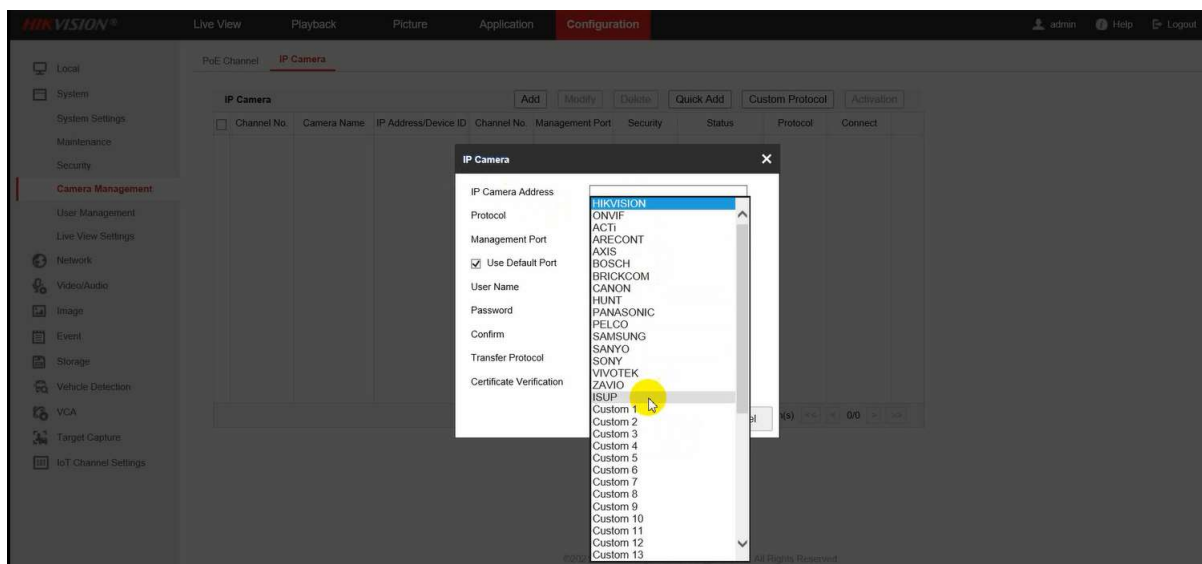
**6. To the camera web page, first check whether the 4G connection is normal.**



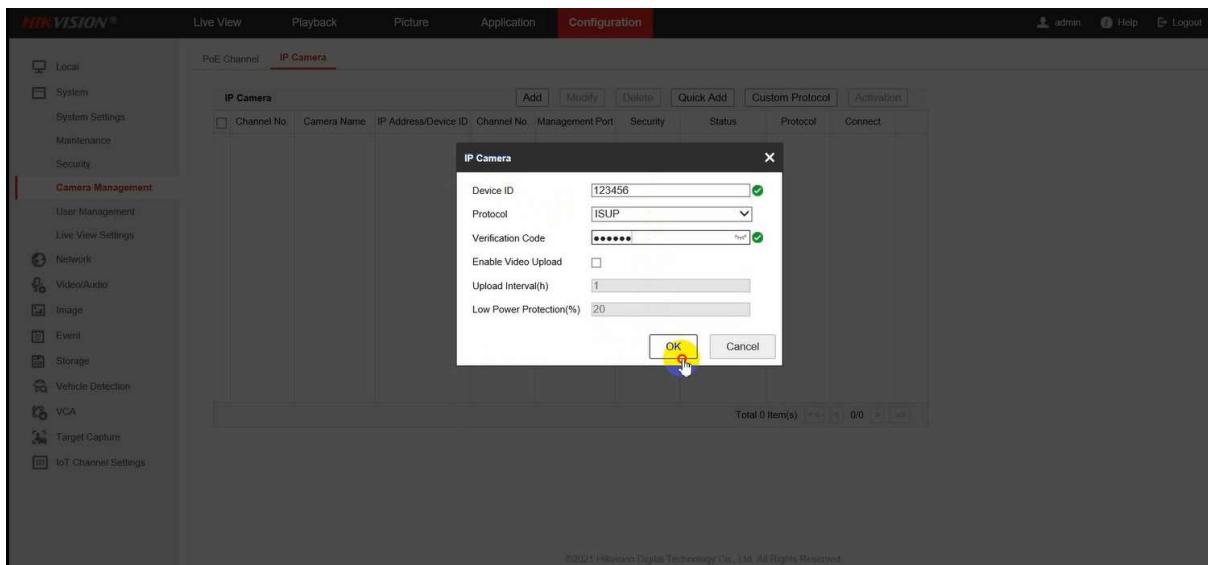
7. Configure the ISUP protocol on the web side of the camera. The server address is the external IP address of NVR. The port is the Proxy service port of NVR. The ID and password of the camera can set it at will. If there are multiple cameras, the ID should not be the same. Save after setting.



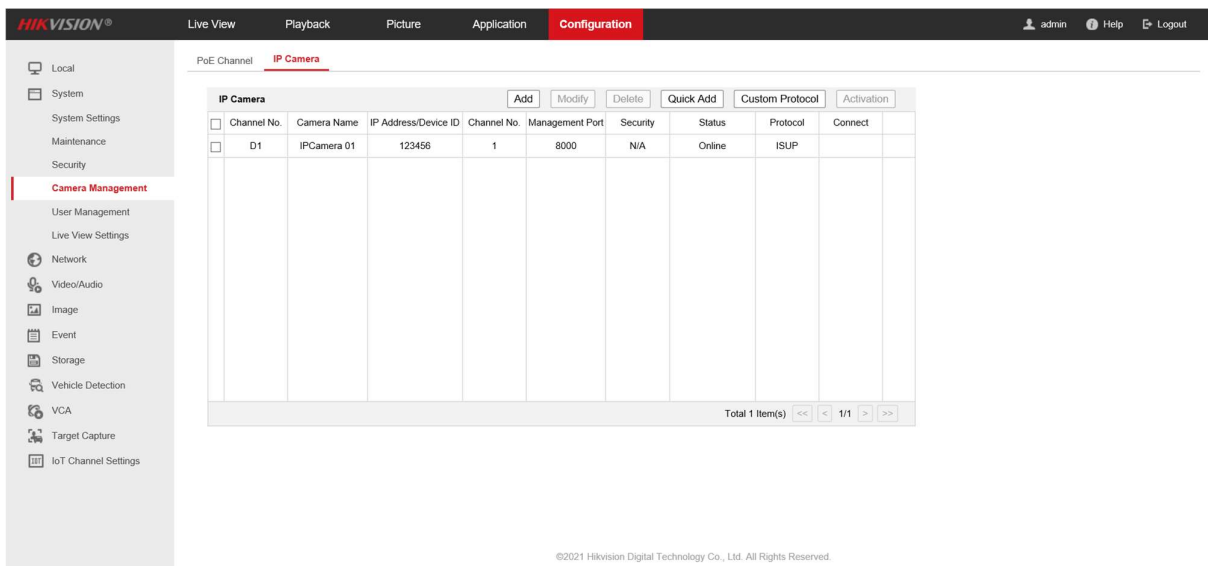
8. Go to the web page of NVR, add a camera, and select ISUP as the protocol



## 9. Fill in the device ID and password just set.

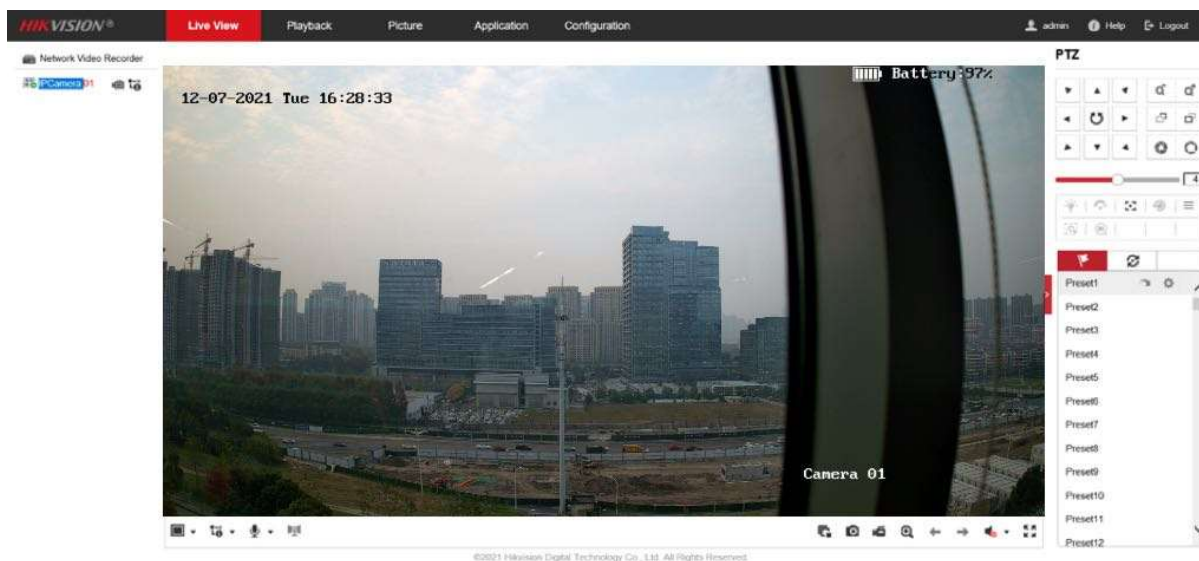


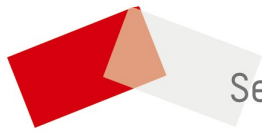
## 10. Refresh the page and the camera status is online.





## 11. In the Live View interface, the camera can be previewed





See Far, Go Further