

# Configuration & Installation Guidance of PanoVu Seires PT Camera

# 1. PanoVu Seires PT Camera Introduction

## 1.1 Overview

Hikvision iDS-2PT9122IX-DE/S (5-50mm) (4mm) PanoVu Seires PT Camera 2MP + 2MP 10× Network PTZ Camera, with the integration design, is able to capture distant view images as well as close-up images. Base on deep learning algorithm, PanoVu Seires PT Camera can realize accuracy human body capture.

This series of camera can be widely used for wide ranges of high-definition, such as the entrance/exit, airport, port, wharf, reservoir, square, park, scenic spot and station, etc.

## 1.2 Key Features

### **Distant View Camera**

- 1/2.7" progressive scan CMOS
- Up to 1920 × 1080 resolution
- Horizontal field of view: 92°
- Min. illumination:  
Color: 0.002 Lux@(F1.2, AGC ON),  
B/W: 0.0002 Lux@(F1.2, AGC ON)

### **Tracking PTZ Camera**

- 1/2.7" progressive scan CMOS
- Up to 1920 × 1080 resolution
- Horizontal field of view: 61.3° to 6.26°
- Pan and tilt range: 210° (Pan), -22° o 22° (Tilt)
- Min. illumination:  
Color: 0.0035 Lux@(F1.6, AGC ON)  
0 Lux with IR
- 10× Optical Zoom, 16× Digital Zoom

## 1.3 Mount Option



DS-2601ZJ Wall Mounting Bracket



DS-2664ZJ Pendant Mounting Bracket



DS-2665ZJ-P Table mounting Bracket

## 2. Installation Guidance

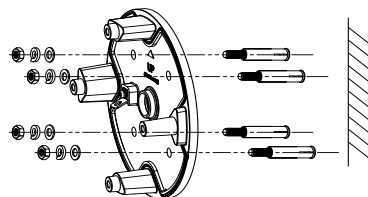
### 2.1 Mounting Applications

PanoVu Seires PT Camera support various mounting modes, including wall mounting and pendant mounting. Please use Pole mounting hoop when mount to a pole.

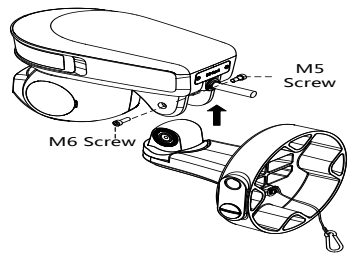


### 2.2 Steps

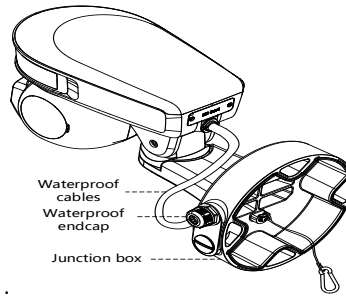
- A. Drill the screw hole and the cable hole according to the supplied drill template. Fix the mounting base to the ceiling. Note that the logo should be at the top.



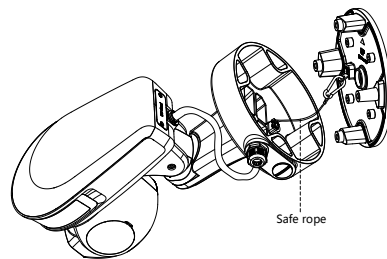
- B. Push the bracket into the camera hangers, secure the camera to the bracket with M5 and M6 screws.



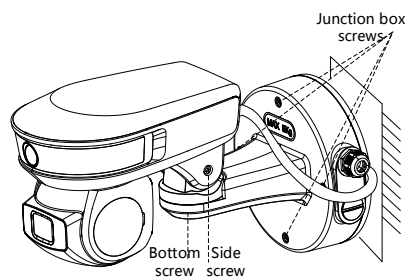
C. Put the wires into the junction box. And tighten up the waterproof endcap.



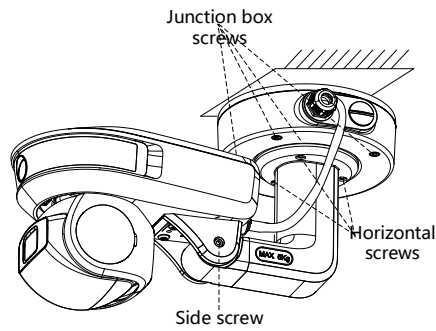
D. Hook the bracket to the bracket base with the safety rope.



E. Fix the bracket to the base.



F. Ceiling mounting.



G. Angle Adjusting: After the camera mounted, you can adjust the angle of the camera to get a good image performance.



Loosen the lock screws in the above picture to adjust the panning position.



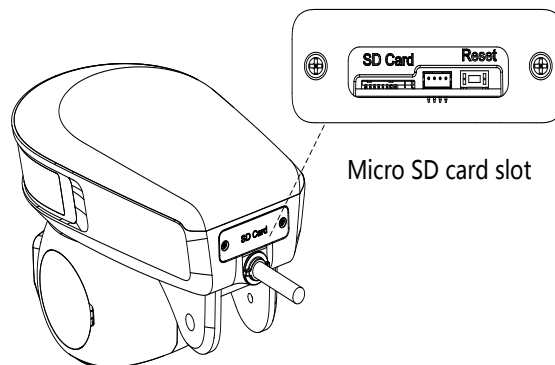
Loosen the lock screws in the above picture to adjust the tilting position.

H. Power Supply

PanoVu Seires PT Camera use DC12V, 5A power supply. DC12V, 5A.

I. Installing the SD card

If you need local storage, insert the SD card to the SD card slot to get it installed.

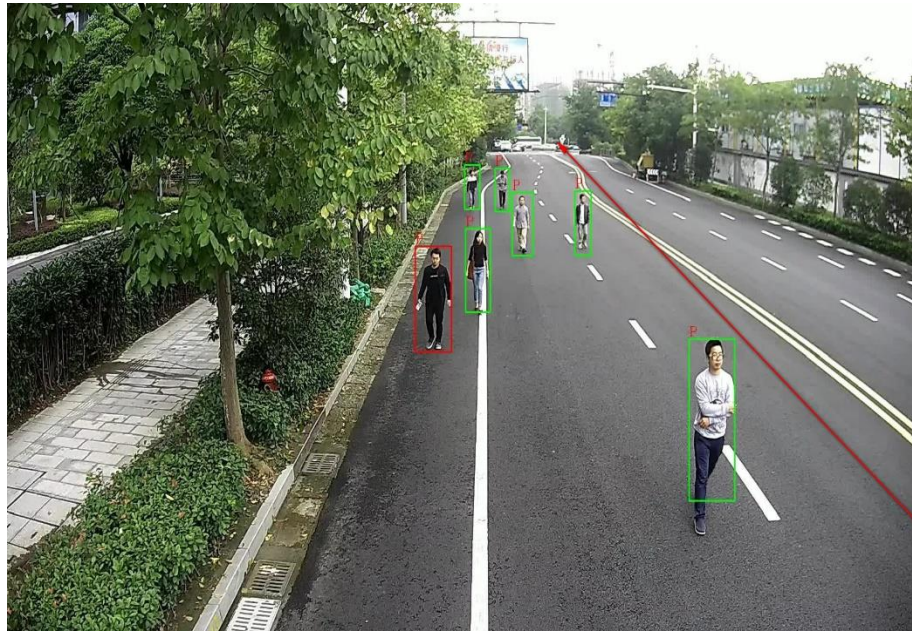


## 2.3 Installation Height

Suggestion installation height is 3.5m to 6m. And make sure no obstacle before the camera.

## 2.4 Monitoring Range

The fixed camera can get human body information within 50m, and the PTZ camera can cover 100m.



Fixed camera image



PTZ camera image



## 2.5 Dimensions and protection level

Dimensions:  $\Phi 195.1 \times 280.8\text{mm}$  ;

Weight: 2.5kg;

Protection Level: IP66 , TVS 6000V Lightning Protection, Surge Protection and Voltage Transient Protection

### 3. Product Positioning

	PanoVu Seires PT Camera	Box + PTZ
Appearance		
Features	Up to 50m human body capture. With deep learning algorithm, realize high capture speed and accuracy. All in one design.	Composed of box cameras and smart PTZ dome cameras. Support multiple smart event linkage. But the capture speed is slower than PT camera and may have miss capture.
Application Scenario	Common scene, within 100m. Such as gate, hall, corridor, school.	Further distance scene (100m to 300m), such as parking apron, playground.

### 4. Configuration Guidance

#### 4.1 Rapid Focus

After this function is enabled, perform calibration and the focus can be quicker than quick focus.

1. Enter the Rapid Focus settings interface:

**Configuration > PTZ > Rapid Focus**

10-24-2018 Wed 20:40:33

Finish calibration before you enable rapid focus. Disabling rapid focus before you delete all scenes.

Start Calibration Stop Calibration

No.	Scene Name	Rate	Calibration Point Amount
1	Scene1	10	3

2. Check the **Enable** checkbox to enable the Rapid Focus function.
3. Click **Add** to add a scene, up to 4 scenes can be set.
4. For each scene, drag the red line on the live view image to the calibration position. You can drag the ends of the red line to adjust the length of the line.
5. Click **Start Calibration**. There is the notice *Calibrating* on the live view image and the camera lens performs auto focus.
6. After calibration, there is the notice *Calibration succeeded* on the live view image.

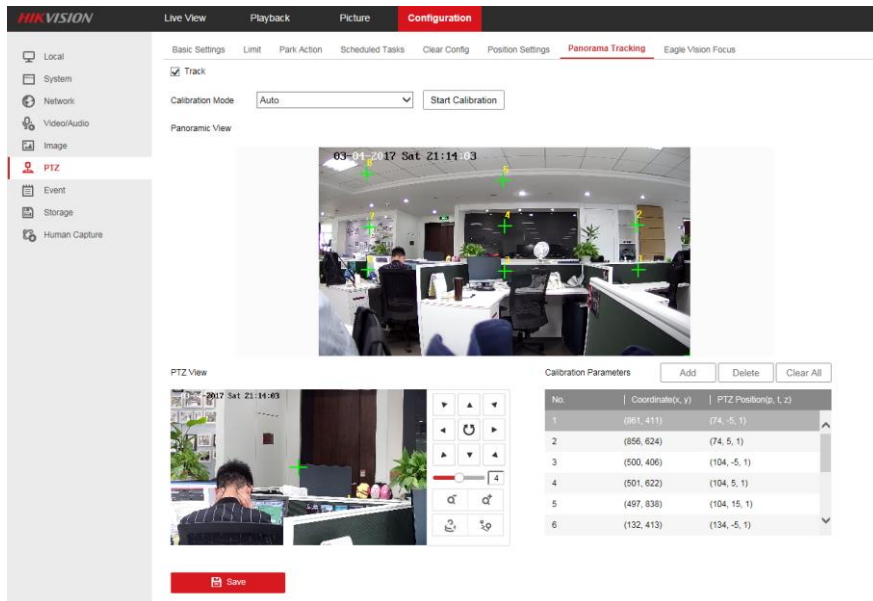
Click **Save** to save the settings.

## 4.2 Calibration

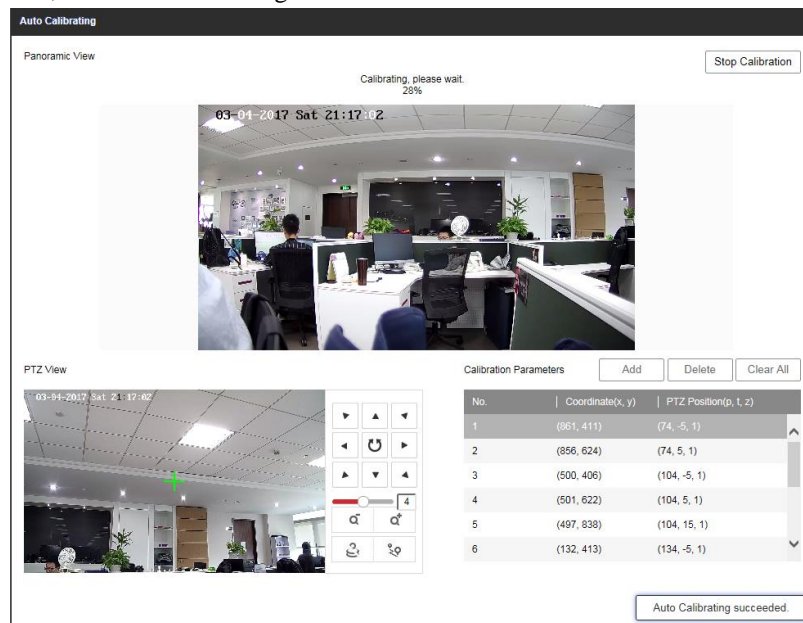
### 4.2.1 Auto Calibration

- (1) Select Auto from the calibration mode. And click **Start Calibration**.






- (2) The pop up auto calibration box like below. The whole process will be automatically. After the process is 100%, click auto calibrating succeeded.

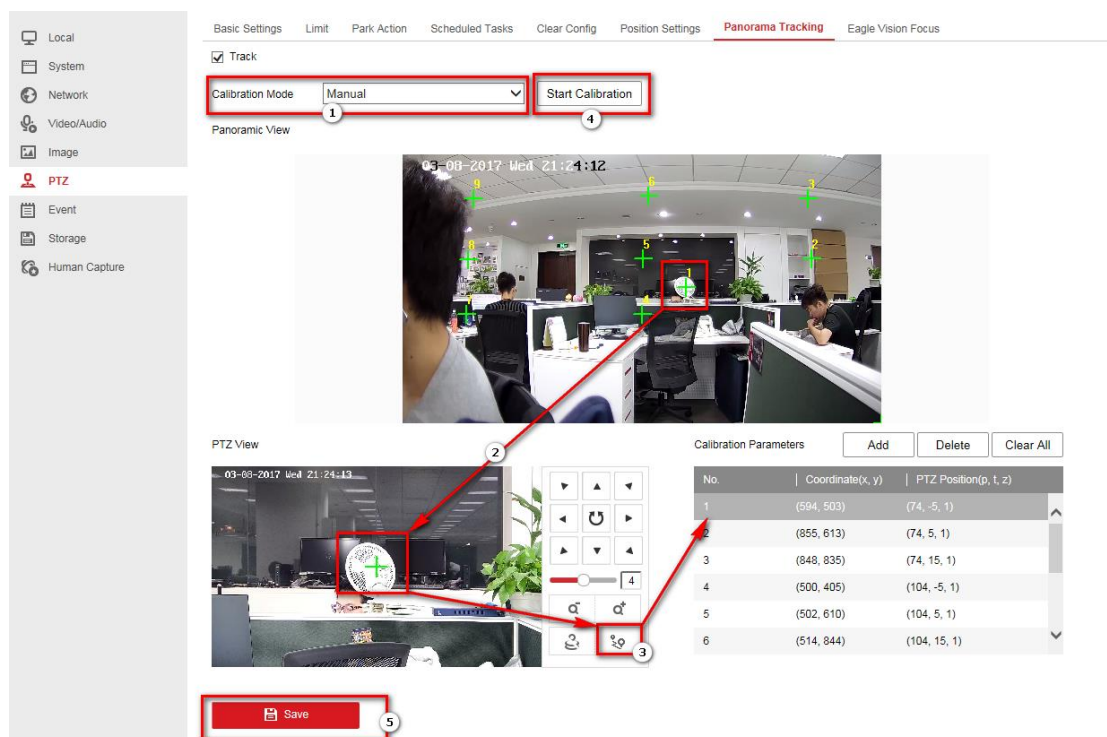


- (3) Enable tracking and save the settings.

## 4.2.2 Manual Calibration

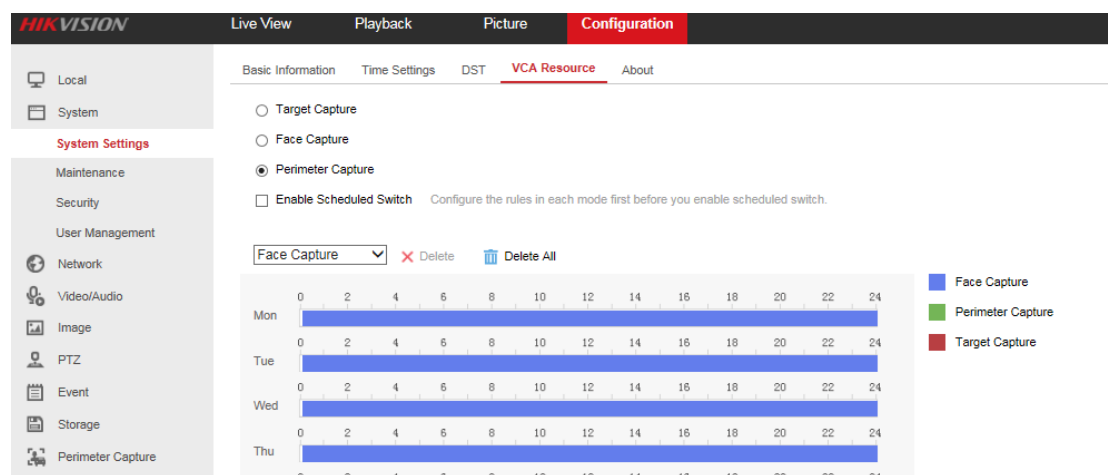
- (1) Select Manual Calibrating from the calibration list.
- (2) Drag the crosses of the panoramic view “+” and move them to the scene evenly.
- (3) Select a calibration site and adjust the PTZ view by controlling PTZ and zooming in/ out to ensure the cross in the center of the PTZ view is almost the same with the site of the calibration site of panoramic view.
- (4) Click  to save the setting of calibration No. 1.

- (5) Select calibration site No. 2 to No. 9, and repeat the step above to add the manual calibration sites.
- (6) Click **Start Calibration** to perform the calibration

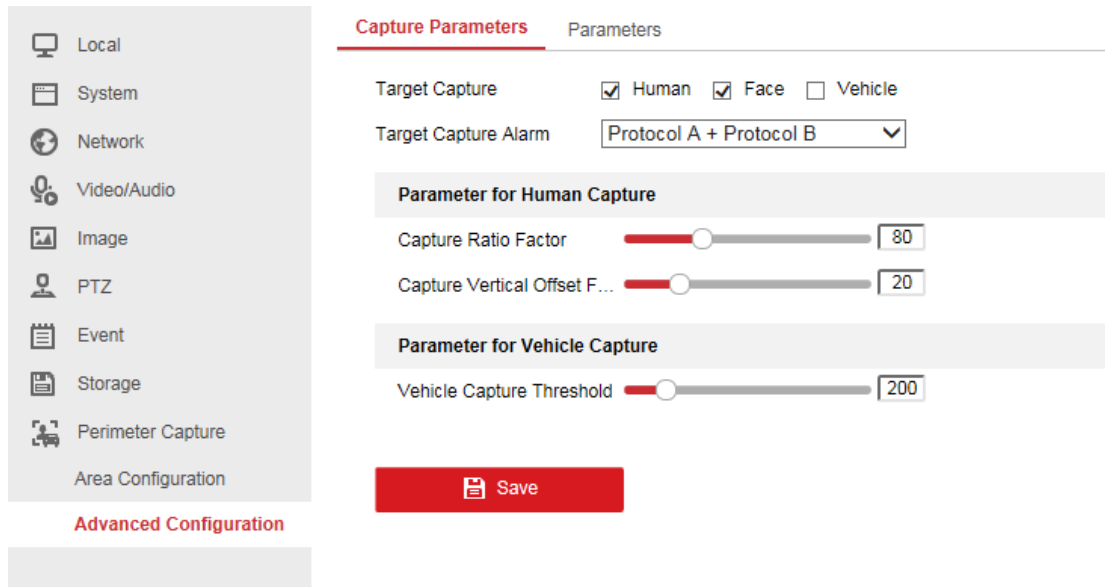



## 4.3 VCA settings


1. PanoVu series PT camera support face capture, human body capture, and vehicle capture.
2. Go to *System > System Settings > VCA Resource*. There are 3 capture models. You can check **Enable Scheduled Switch** to enable scheduled switch function.

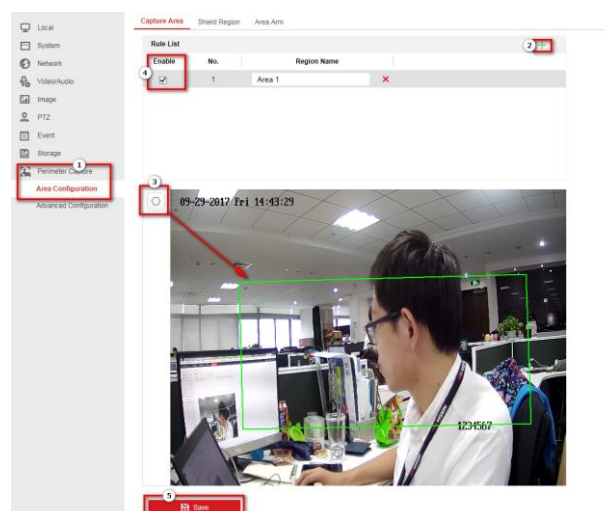


- Target Capture: The panoramic camera recognizes and captures the vehicle, the human face, and the human body, and the tracking PTZ camera captures the human face through linkage tracking and positioning. The captured pictures are uploaded to the central platform.



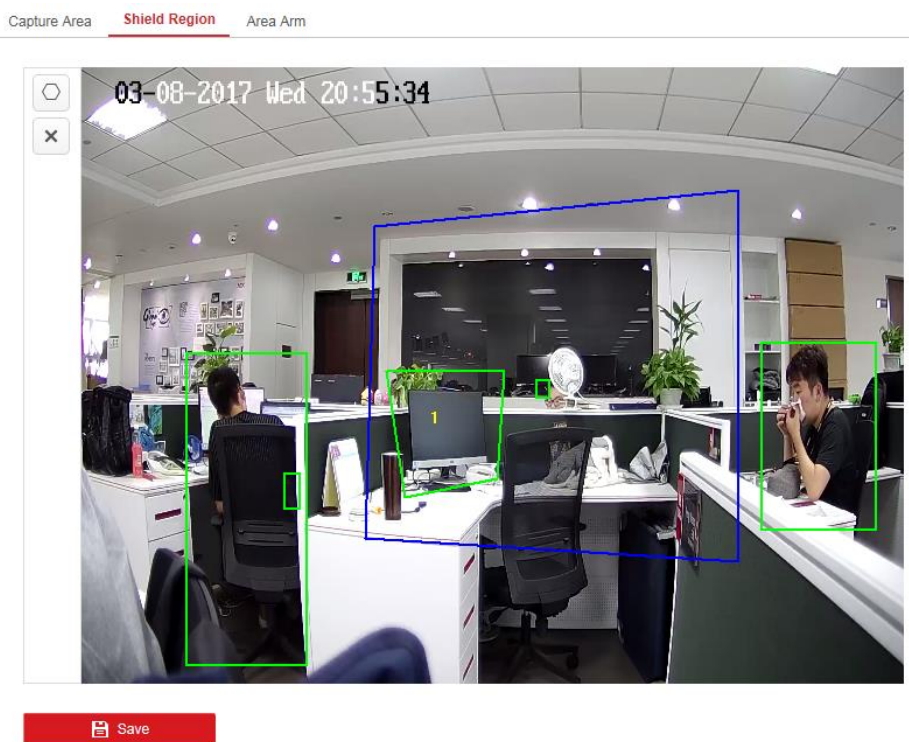
- Add a new rule. Click  to add a new rule. You can edit the region name for the new rule.

- Set the rule area. Click  to draw the rule area. Left click the mouse to start to draw the area and right click to finish drawing. Check the **Enable** checkbox to enable the rule and click **Save** to save the settings.

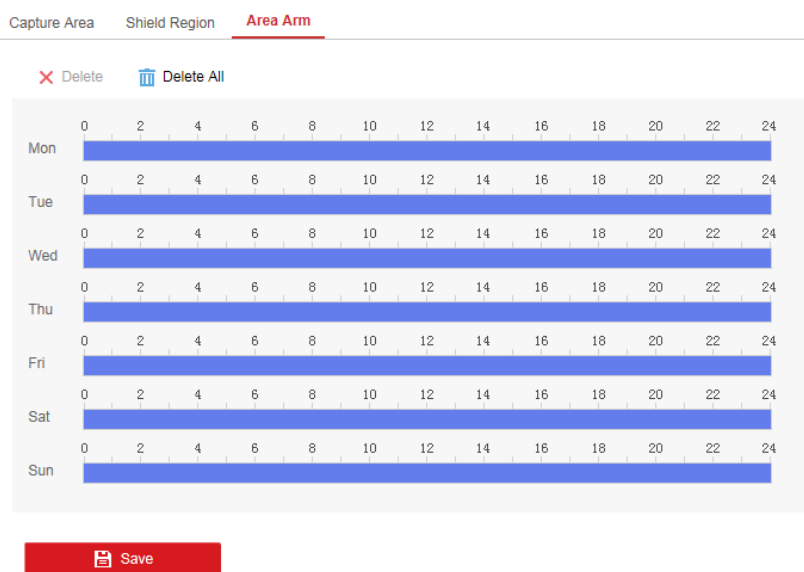


- Set shield region. Shield region is the area where the rules are invalid. Four shield

regions can be set.

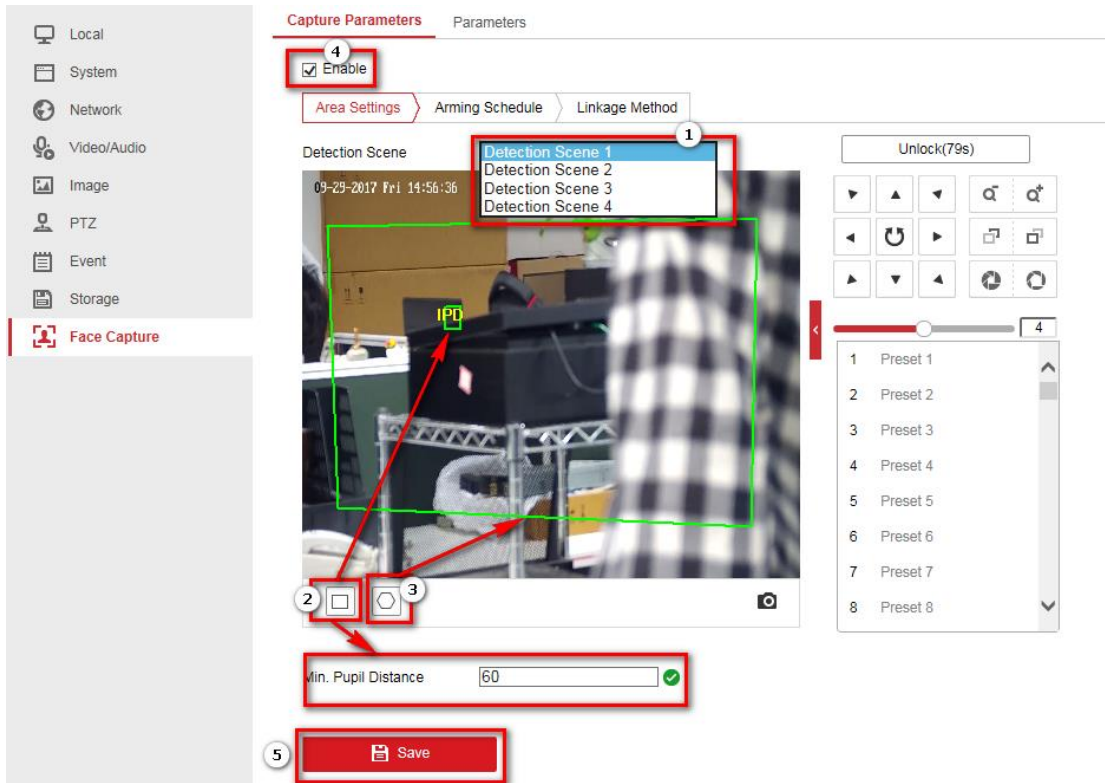


3.4 set arming schedule. The time of each period cannot be overlapped. Up to 8 periods can be configured for each day.

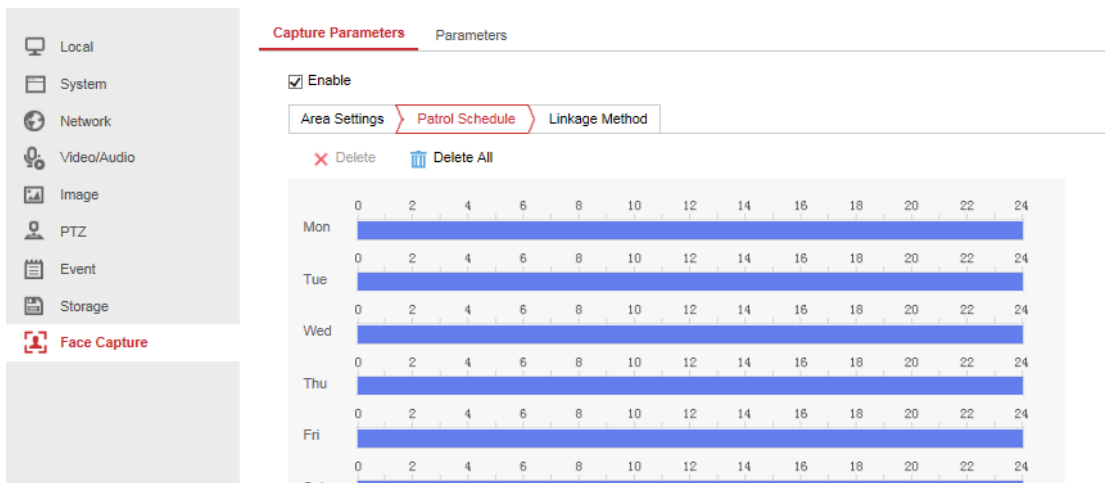


4. Face Capture: The tracking PTZ camera captures the human face that meets the pupil distance demand. The captured pictures are uploaded to the central platform.

4 detection scene can be set for face detection. Set rules and scene according below picture.



#### 4.2 Set arming schedule for each scene.

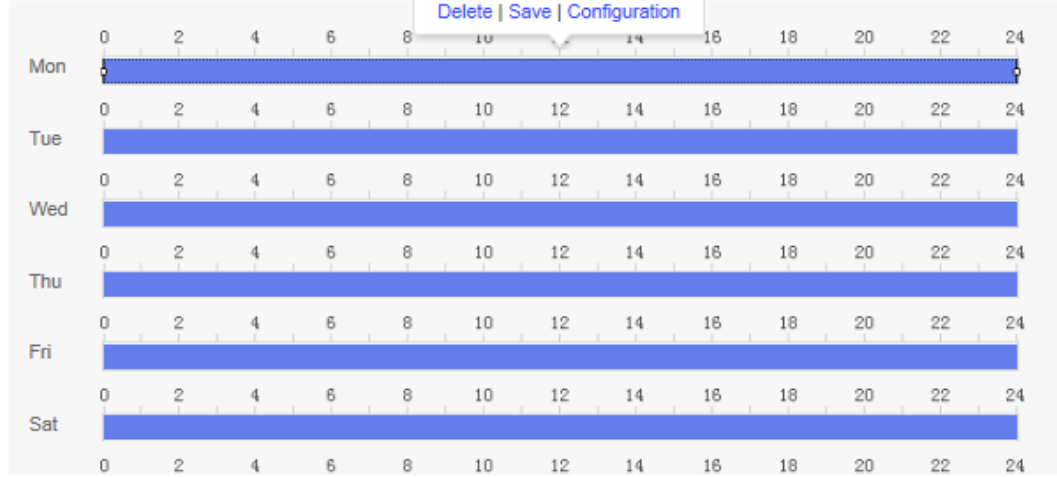


#### 4.3 Set patrol for scenes.

Enable

Area Settings **Patrol Schedule** Linkage Method

00 : 00 - 24 : 00  
Delete | Save | Configuration



Capture Parameters Parameters

Enable

Area Settings **Patrol Schedule** Linkage Method

**Configuration** ✕

Mon 00:00 - 24:00 The total amount of the auto-switch dwell time should be no more than the arming time segment.

Patrol Sequence	Scene Name	Dwell Time
1	Scene1	10 minute(s)
2	Scene1	0 Hour 10 minute(s) 0 s
+		

Scene1  
 Scene2  
 Scene3  
 Scene4  
 Scene5  
 Scene6  
 Scene7  
 Scene8

- Perimeter Capture: The panoramic camera detects the perimeter of an area, and the tracking PTZ camera captures the human body or the human face. The captured pictures are uploaded to the central platform. Configuration method is the same with target capture mode.

# 5. Result Show

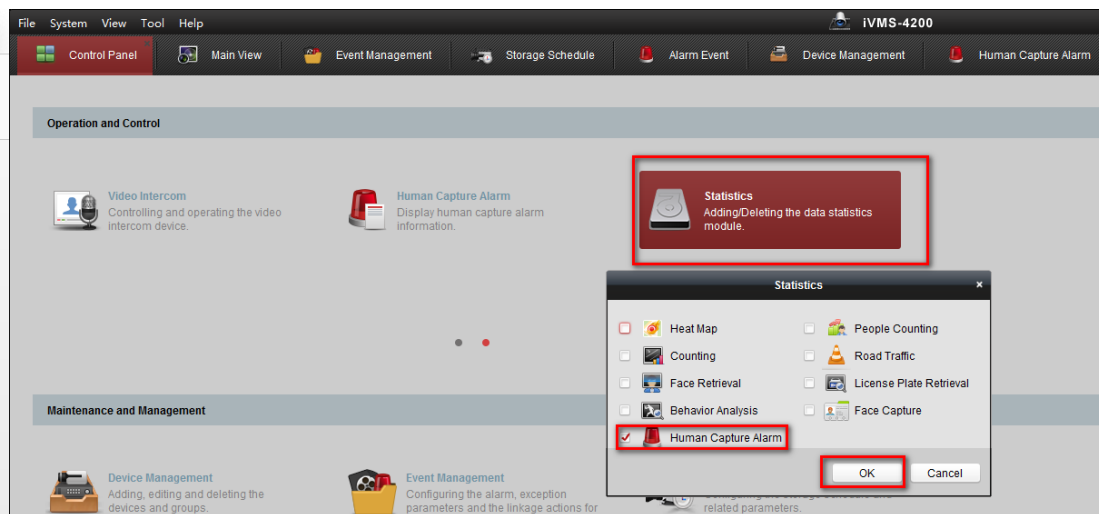
## 5.1 4200

Use the latest version 4200

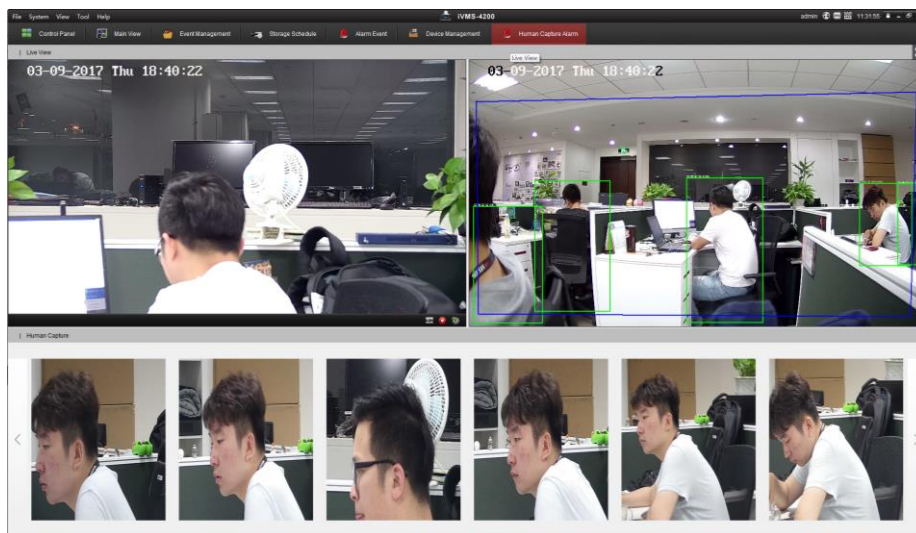
Install iVMS 4200.

Add camera in the device management interface.

Go to control panel, add human capture alarm module.



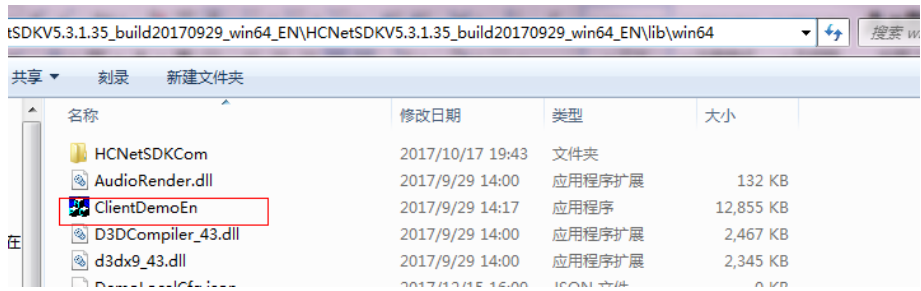
Go to human capture alarm interface. It will takes several minutes to show the capture images.



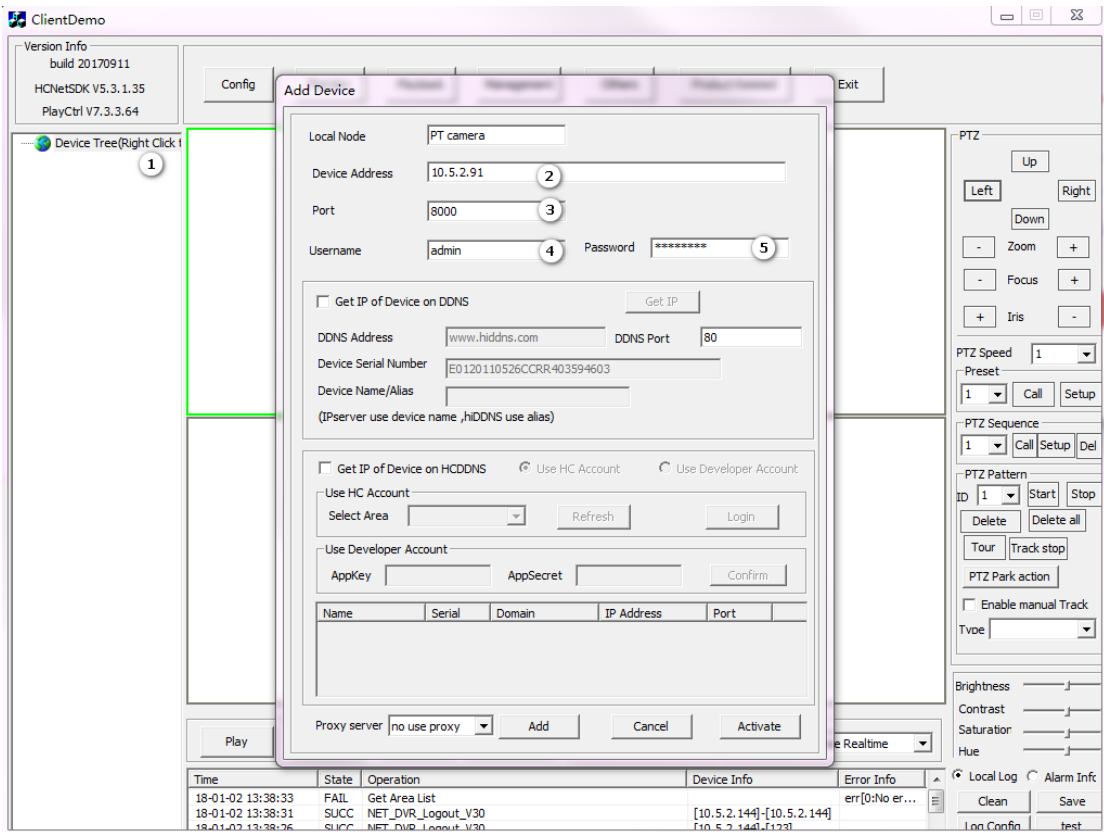
## 5.2 DEMO Tool

### Steps:

1. Download latest version SDK, install it to PC. And run ClientDemoEn.exe.

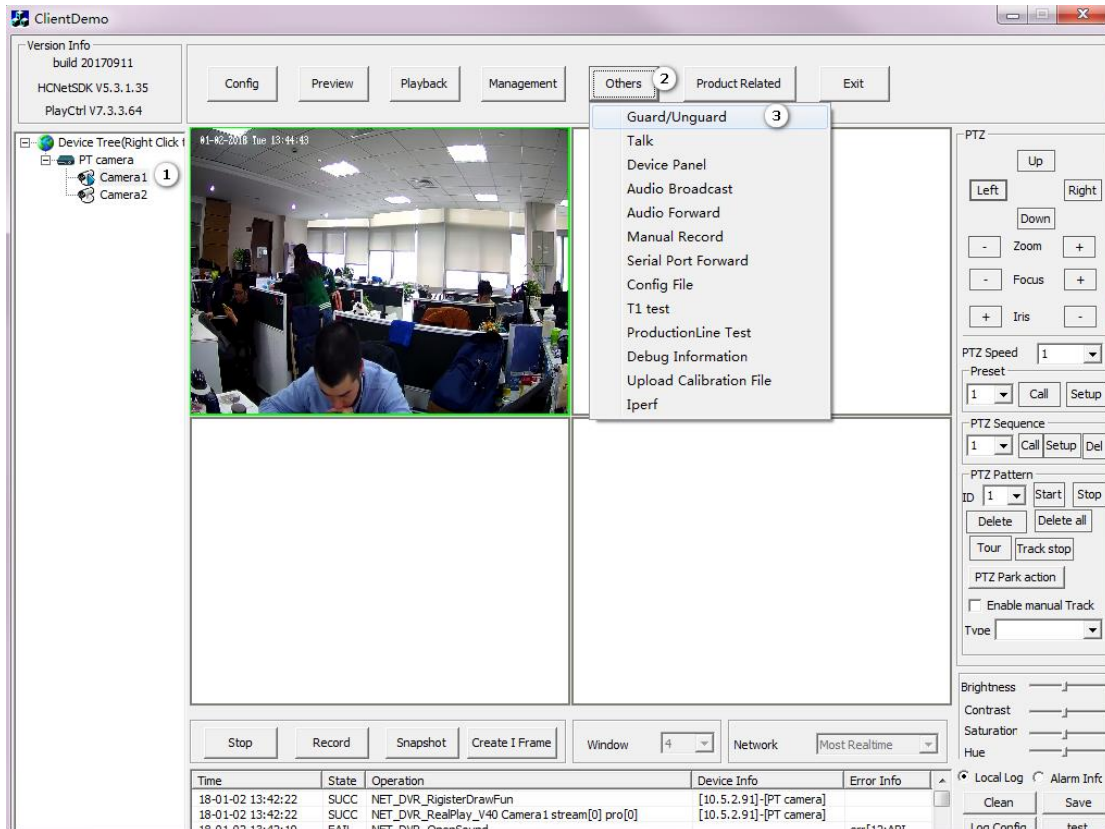


2. Add device to client demo.

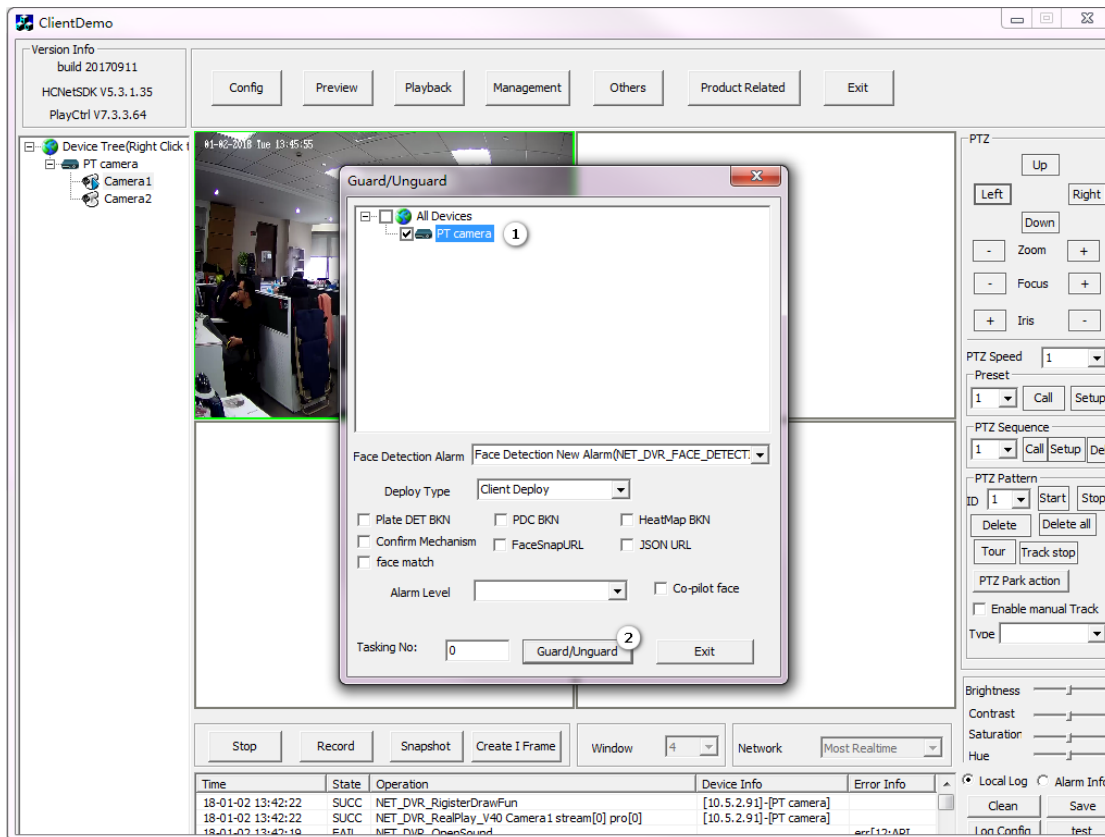


3. Choose the camera and go to *Others*→ *Guard/Unguard*.

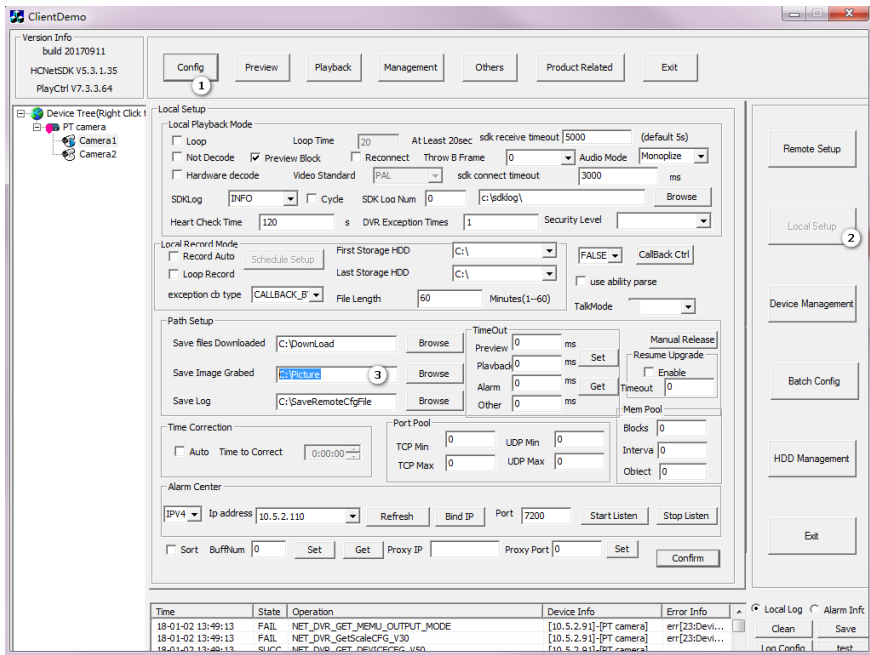




4. The demo will pop up a window. Choose the camera name and click *Guard/Unguard*.



5. Then demo will store all the captured picture to the PC. The local path can be set at *Config* → *Local Setup*.



6. Go to the local path and find all the pictures.

