



如何查看门禁设备布防信息
How to view the Access Control Arming Information

Title:	How to view the Access Control arming information	Version:	v1.0	Date:	26/08/2022
Product:	Access Controller			Page:	1 of 5

Preparation

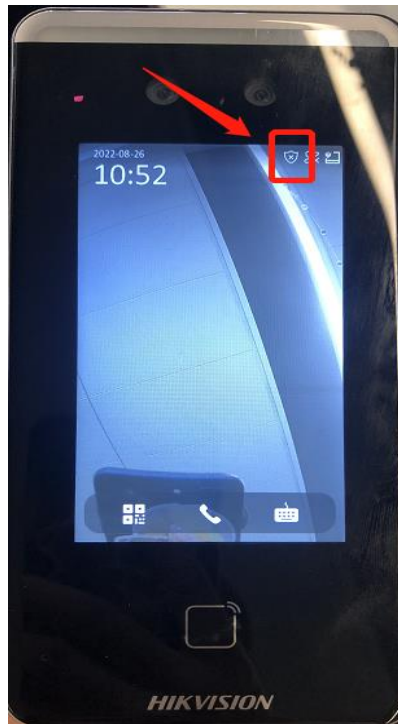
Type	Model	Version
Face Recognition Terminal	DS-K1T341AM	

How to view the Access Control arming information

After the access control is armed, the device uploads the access control event to the corresponding platform. If you need to check the arming status of the device and the IP address of the arming platform when the problem occurs, there are several ways to view it.

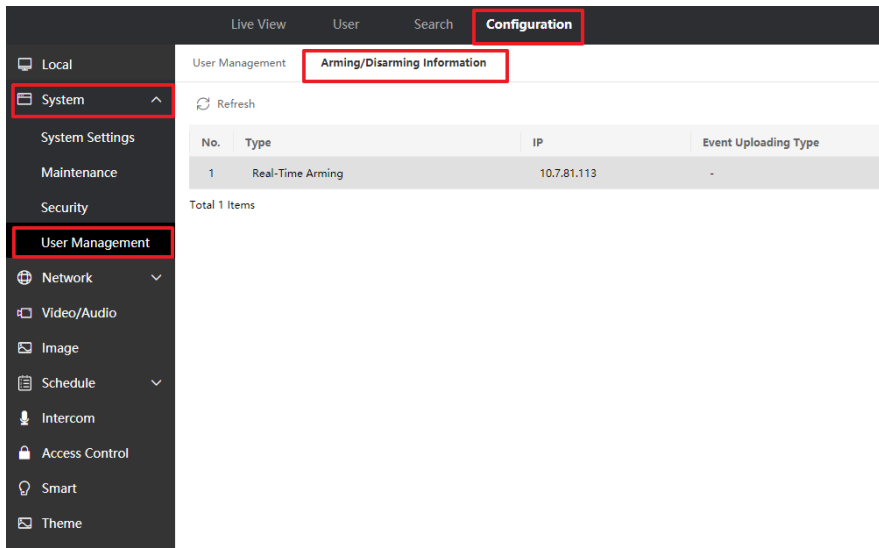
1. Face Recognition Terminal local icon

- 1) There is an icon for the shield in the upper right corner of the local main interface of the Face Recognition Terminal, and the shield is × in the unarmed state, and it becomes ✓ in the armed state. Directly clicking on the shield icon device will display the arming IP.(Only the client arming IP is displayed here)



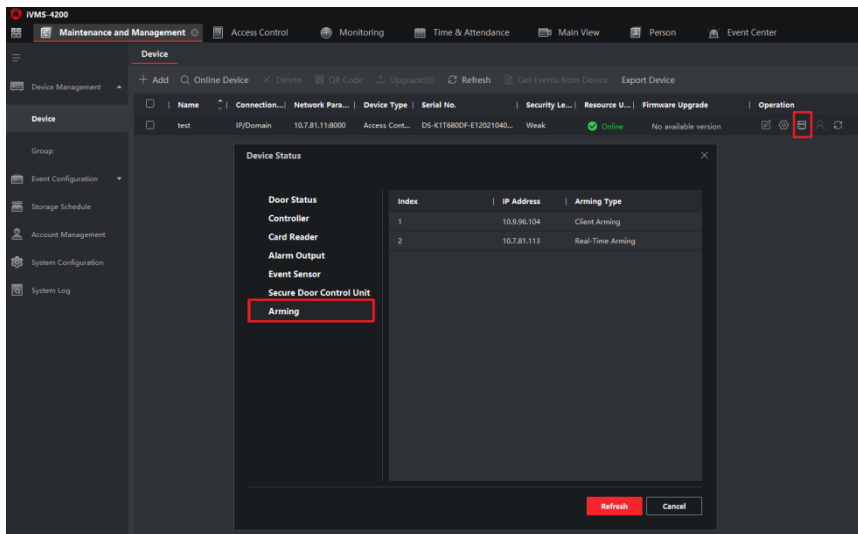
2. Face Recognition Terminal web interface view

- 1) Face Recognition Terminal web interface, configuration-system-user-management-arming/disarming information can see the device's arming type and IP.



3. IVMS-4200 View The Arming SDK obtains arming information

- 1) IVMS-4200 Device management - Device status - arming, you can view the type of arming and arming IP of the device.



4. The SDK retrieves the device arming information

- 1) After the SDK adds the device, enter the product-related configuration - access control host - access control XML transmission, drop-down menu select command for arming information to obtain, click the operation, the output parameters will display the equipment arming information.



5. SSH/Serial command

- 1) SSH or serial port login access control device, enter the root account, and then enter **showGuardInfo** command, will display the device's arming information, arming IP.

```
[root@dvr dvs config] # showGuardInfo
-----channel[0] guard client ip:0.0.0.0
-----channel[1] guard client ip:0.0.0.0
-----channel[2] guard client ip:0.0.0.0
-----channel[3] guard client ip:0.0.0.0
-----channel[4] guard client ip:0.0.0.0
-----channel[5] guard client ip:0.0.0.0
-----channel[6] guard client ip:0.0.0.0
-----channel[7] guard client ip:10.7.81.113
-----channel[8] guard client ip:0.0.0.0
-----channel[9] guard client ip:0.0.0.0
-----channel[10] guard client ip:0.0.0.0
```



See Far, Go Further