

Title:	DS-K1T501 connect to K2604 through RS485	Version:	v1.0	Date:	10/31/2018
Product:	DS-K1T501			Page:	1 of 5

DS-K1T501 work as RS485 card reader

Device Info:

DS-K1T501SF firmware version: V1.1.0_build180202

DS-K2604 firmware version: V2.0.4_build180913

Step1: Set dip switch for K1T501SF(instruction available on User manual)

Appendix B DIP Switch Introduction

The DIP switch diagram is as follows:

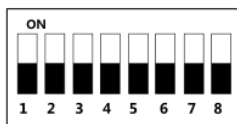


Table 7-2 Description of DIP Switch

Icon	Description
	Represent 1 in binary mode
	Represent 0 in binary mode

For example, binary value of the following status is: 0000 1100.



Table 7-3 Description of DIP Switch

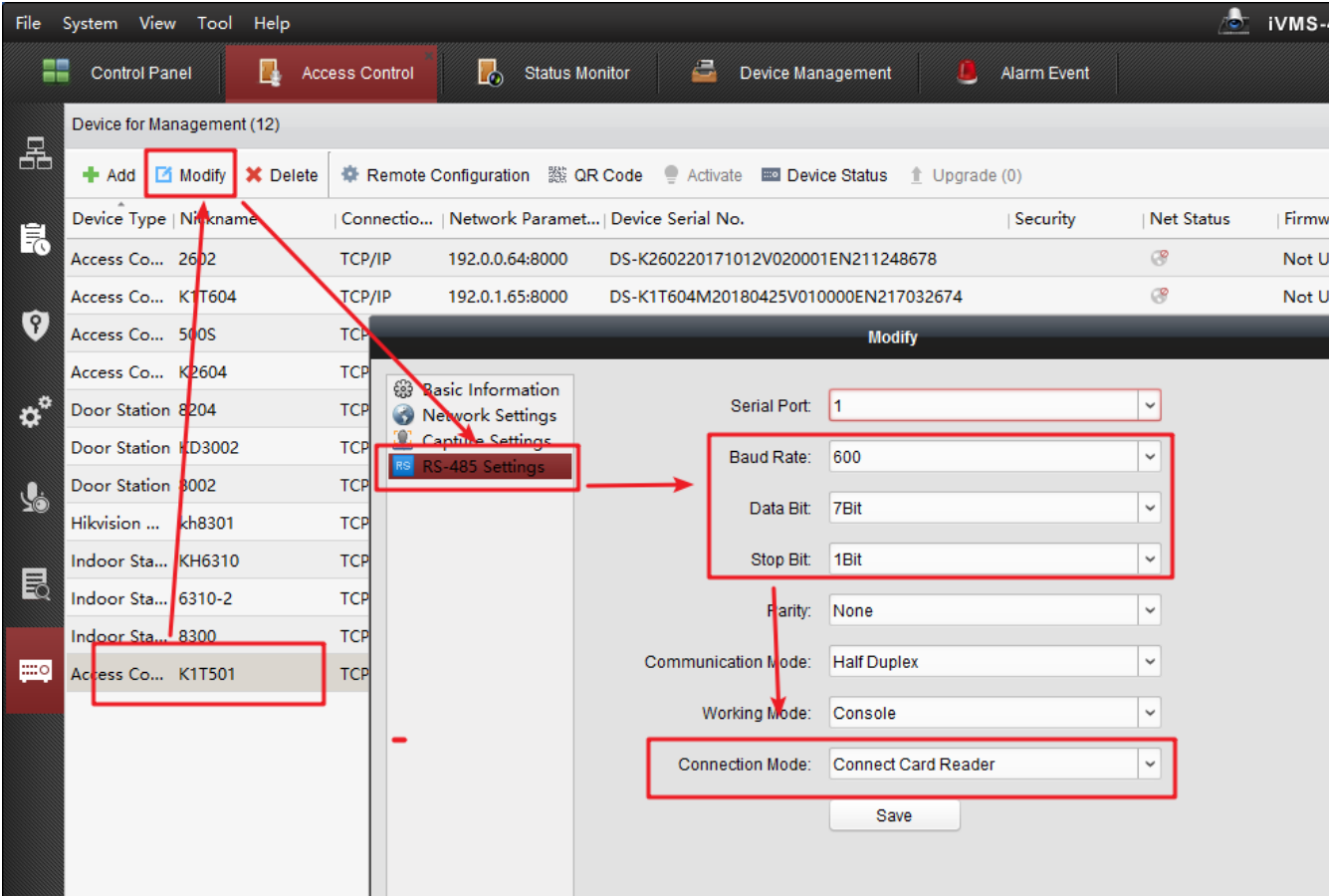
No.	Description	DIP Switch Status
1 ~ 4	Address of RS-485	2: Security Module 0: Card Reader
5	RS-485 Direction under the Terminal Mode	1: Upstream; 0: Down Stream
6	Working Method	1: Card Reader; 0: Terminal.
7	Wiegand Protocol (available when No. 6 is 1)	1: Wiegand protocol of 26-bit; 0: Wiegand protocol of 34-bit.
8	Matched Resistance (available for RS-485 protocol)	1: Enable; 0: Disable.

For example, if K1T501SF use as RS485 reader 1(control K2604 lock1 entrance), follow front picture Set dip switch 1 (RS485 address), 5 (RS485 up stream) and 6 (Device work as card reader) as ON status.



Title:	DS-K1T501 connect to K2604 through RS485	Version:	v1.0	Date:	10/31/2018
Product:	DS-K1T501			Page:	2 of 5

Step2: Set RS485 parameters and modify work mode. First picture is default setting, we need modify to same as second picture.



Title:	DS-K1T501 connect to K2604 through RS485	Version:	v1.0	Date:	10/31/2018
Product:	DS-K1T501			Page:	3 of 5

Modify

Serial Port: 1

Baud Rate: 19200

Data Bit: 8Bit

Stop Bit: 1Bit

Parity: None

Communication Mode: Half Duplex

Working Mode: Console

Connection Mode: Connect Client

Save

Step3: Add card and person info and sync to K2604 access controller.

File System View Tool Help

Control Panel Access Control Status Monitor Event Management Device

+ Add Modify Delete Apply All Apply Changes

Permission Na...	Template	Person	Door	Details	Status
123	Whole Week ...	Morgen	test_K2604,Do...	Details	Applied

Edit Permission

Permission Name: 123

Template: Whole Week Template

Person: Search... hq

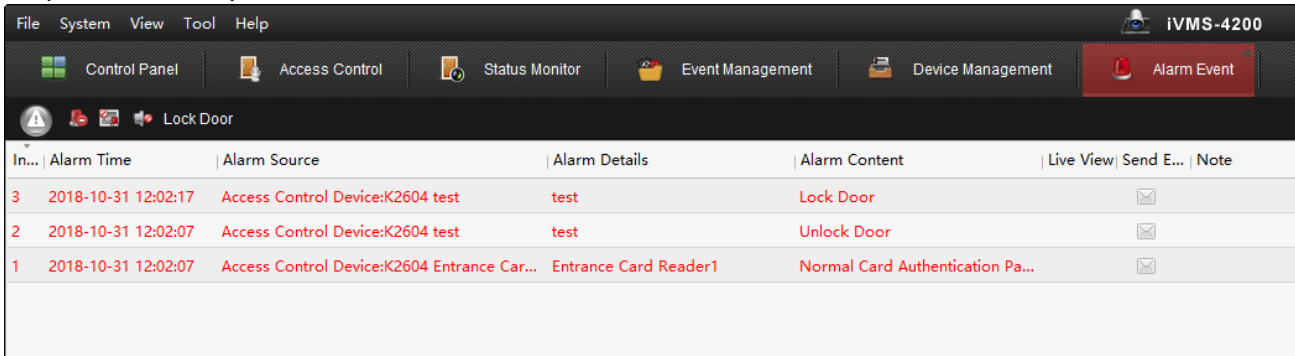
Selected Personnel(1): Search... Morgen hq/1

Access Control Point/Device: Search... 2602, K2604

Access Control Point/Device Name	Door Group
test_K2604	K2604
Door2_K2604	K2604
Door3_K2604	K2604
Door4_K2604	K2604

Title:	DS-K1T501 connect to K2604 through RS485	Version:	v1.0	Date:	10/31/2018
Product:	DS-K1T501			Page:	4 of 5

Step4: Test. Verify card on K1T501SF and check event from ivms-4200 software



The screenshot shows the ivms-4200 software interface. The top menu bar includes 'File', 'System', 'View', 'Tool', and 'Help'. Below the menu is a toolbar with icons for 'Control Panel', 'Access Control', 'Status Monitor', 'Event Management', 'Device Management', and 'Alarm Event'. A 'Lock Door' button is also visible. The main area displays a table of alarm events.

In...	Alarm Time	Alarm Source	Alarm Details	Alarm Content	Live View	Send E...	Note
3	2018-10-31 12:02:17	Access Control Device:K2604 test	test	Lock Door			
2	2018-10-31 12:02:07	Access Control Device:K2604 test	test	Unlock Door			
1	2018-10-31 12:02:07	Access Control Device:K2604 Entrance Car...	Entrance Card Reader1	Normal Card Authentication Pa...			



Title:	DS-K1T501 connect to K2604 through RS485	Version:	v1.0	Date:	10/31/2018
Product:	DS-K1T501			Page:	5 of 5

First Choice for Security Professionals
HIKVISION Technical Support