

HIKVISION EUROPE

Monthly External Technical Newsletter

CONTENTS

New Firmware / Software Release
Product Change / FAQ / Tool Chart
Technical Video Update

Sep 2020

- New Firmware / Software Release
 - [H7 Platform DeepinView IP Weigand Camera V5.5.130](#)
 - [H3 Platform IP Camera V5.6.12](#)
 - [H7 Platform DeepinView IP Camera V5.5.122](#)
 - [G3 Platform Explosion proof Camera V5.5.153](#)
 - [Temperature Measurement Terminals V2.2.6](#)
 - [Vandal-Proof Doorbell DS-KB8113-IME1 V2.2.1](#)
 - [Temperature Measurement Terminals V2.2.6 Build 200909](#)
 - [Hikvision Tools Manager V1.1.0.5](#)
 - [Hik-Connect V4.7.0 \(IOS & Andriod\)](#)
- Product Change Notification
 - [DS-2CE56, 71, 72, 78 Series Analog Camera](#)
 - [DS-2DY5223, 9236, 9225, 9250, 7236 Series Positioning System](#)
 - [DS-2CD2TX6G1-4I/SL Series IP Camera](#)
 - [DS-2CE11HOT-PIRL, DS-2CE12HOT-PIRL, D9T Series Analog Camera](#)
 - [DS-2CE10, 12, 70, 72DF8T-FSLN Series Analog Camera](#)
 - [DS-2DF8 Series PTZ Camera](#)
 - [DS-2CD6626B-IZHS, DS-2CD6652B-IZHS Series Anti-Corrosion IP Camera](#)
 - [DS-2CD3 Series IP Camera](#)
 - [Some DS-2DY5\7\9 Series Positioning System Camera](#)

- Product Change Notification
- [DS-2CD6D54G1-IZ, DS-2CD6NEUD54G1-ZS/RC Series IP Camera](#)
- [Some DS-2DE, DS-2DY3320, DS-2DY3220 Series PTZ Camera](#)
- [DS-2DE3A204IW-DE, DS-2DE3A404IW-DE Series PTZ Camera](#)
- [NK4XW1H-1T, DS-2CD21X1G1-IDW1, DS-2CD2123G0D-IW2 Wifi Camera & Kit](#)
- [DS-2CE12D0T-PIRXF, DS-2CE12DFT-PIRXOF28, DS-2CE17H0T-IT, DS-2CE17D0T-IT Series Analog Camera](#)
- [DS-2CE16H0T-ITXF Series Analog Camera](#)
- FAQ / Tool Chart/ Technical Video Update
- [2020 Q3 CE DOC Document Update](#)

H7 Platform DeepinView IP Weigand Camera V5.5.130

The latest firmware version of H7 Platform DeepinView IP Camera V5.5.130 build 200820 has been released.

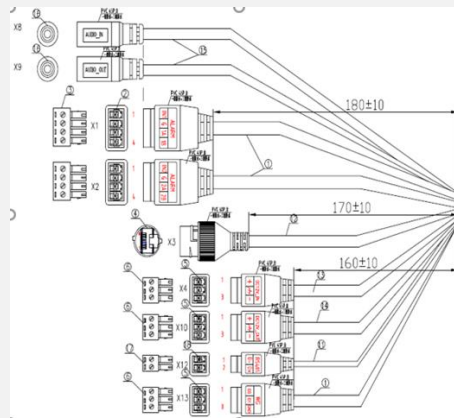
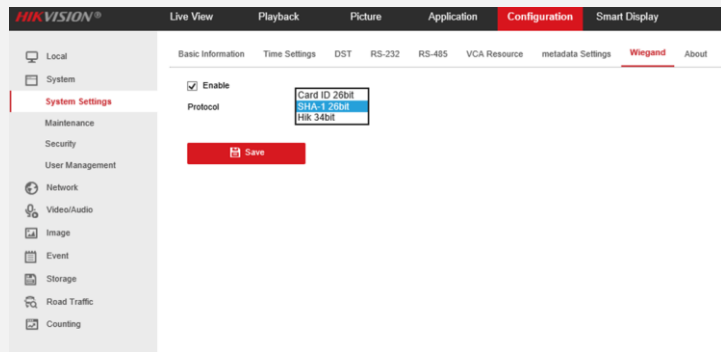
Compatible Models

For IDS-2CD70X6G0/XP, iDS-2CD7AX6G0/P-IZHS Series Camera.

Improved Features

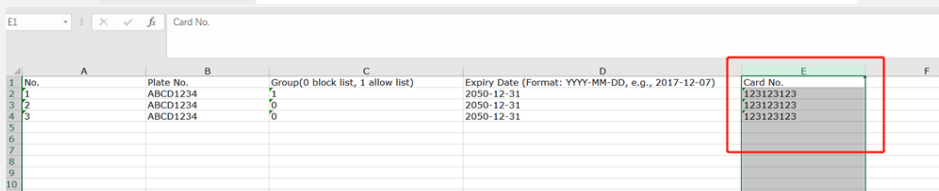
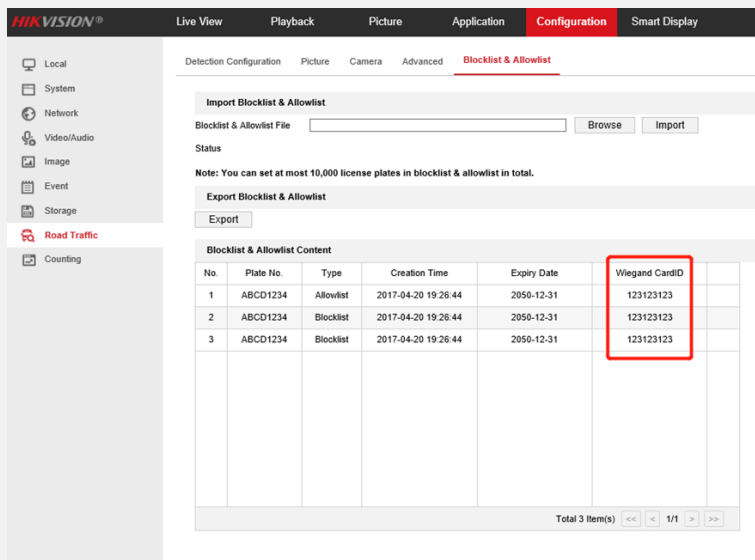
1. Support Weigand function now:

[WEB]Configuration: You can activate this function in [Configuration-System-System Settings-Wiegand]. Currently we support Protocols of Card ID 26bit, SHA-1 26bit, Hik 34bit.



1) Wiegand function is only supported by the models of IDS-2CD7AXX/P-IZHY which were produced after the product switch ECR000034615.

2) You can configure the Wiegand information in the [Configuration]-[Road Traffic]-[Blocklist & Allowlist]

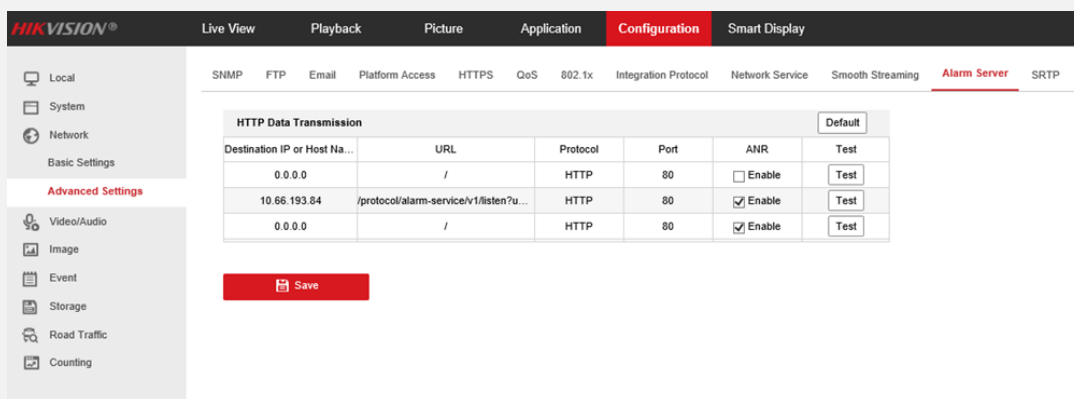


3) As the picture shows, you can import same Wiegand CardID and Plate No but it is not recommended to do this.

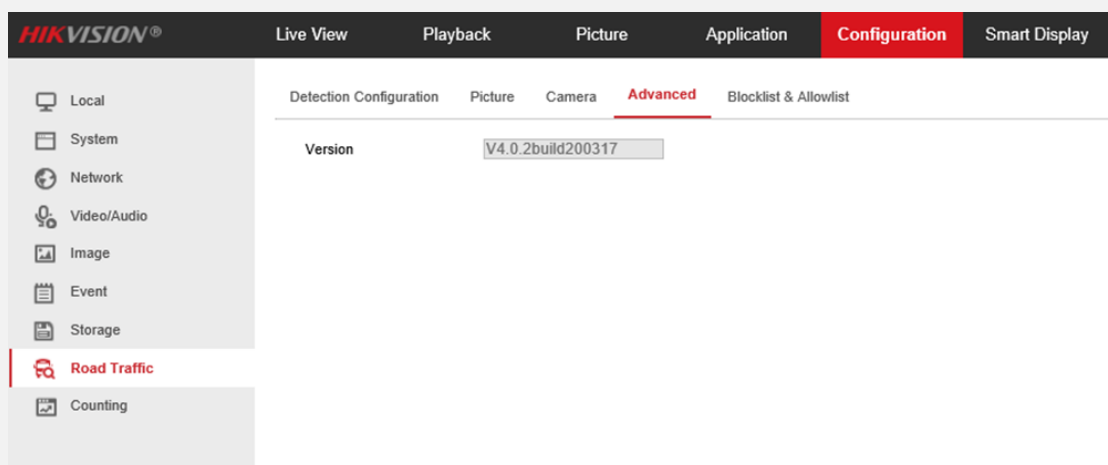
4) Also, only pure numbers can be input in the Wiegand card No.

2. Now the camera support both customized http protocol and baseline http protocol.

H7 Platform DeepinView IP Weigand Camera V5.5.130



3. Now support display ANPR algorithm version number.



4. Support one click to open POS information of ANPR through SDK (ONLY in Chinese version SDKdemo after HCNetsDKV6.1.4.15_build20200305).
5. Now support display vehicle brand information.
6. Word "white" and "black" in web interface and iVMS-4200 interface has been changed into "Allow" and "Block".
- For more details please refer to the release note.

Location

You can find the firmware and release note on Portal:

http://www.hikvisioneurope.com/portal/?dir=portal/Technical%20Materials/00%20%20Network%20Camera/00%20%20Product%20Firmware/H7%20Platform%28IDS-2CD7XXX%29/V5.5.130_Build200820

H3 Platform IP Camera V5.6.12

The latest firmware version of H3 Platform IP Camera V5.6.12 build 200729 has been released.

Compatible Models

For H3 platform DS-2CD5XXX, DS-2CD7XXX Series IP Camera.



New Features

1. HTTP preview fetching stream: Now the models of this firmware included which support MJPEG now can support ISAPI/Streaming/channels//httppreview.
2. Solve the problem of abnormal data reporting in negative time zone (such as UTC-8 in West 8).
3. Lens change:

Some models of ZF15 lens are discontinued, and it is necessary to switch and be compatible with the new ZF19 lens. The main models involved are as follows:

DS-2CD5546G0(G1)-IZ(H)S
 DS-2CD5585G0(G1)-IZ(H)S
 DS-2CD5A46G0(G1)-IZ(H)S
 DS-2CD5A85G0(G1)-IZ(H)S
 DS-2CD7146G0-IZS
 DS-2CD7185G0-IZS
 DS-2CD7546G0-IZ(H)S
 DS-2CD7585G0-IZ(H)S
 DS-2CD7A46G0-IZ(H)S
 DS-2CD7A85G0-IZ(H)S

4. Housing model 1140 P-iris lens switching material.

The 1140 p-iris lens with integrated shield is switched off production, but the two lenses are made of different materials, and the new lens is made of plastic;

Old materials

102201044 hv1140p-8mpir (overseas standard)

New material

102202719 hv1140p-8mpira (overseas standard)

For more details please refer to the release note.

Location

You can find the firmware and release note on Portal:

http://www.hikvisioneurope.com/portal/?dir=portal/Technical%20Materials/00%20%20Network%20Camera/00%20%20Product%20Firmware/H3%20platform%285xxx%2C7xxx%2C6924%2C6DX4%2C8426%29/DS-2CD5XXX/V5.6.12_Build200729

H7 Platform DeepinView IP Camera V5.5.122

The latest firmware version of H7 Platform DeepinView IP Camera V5.5.122 build 200805 has been released.

Compatible Models

For some H7 Platform iDS-2CD7XXX Series DeepinView IP Camera.

New Features

1. Now the Missing Help statements are added.



The screenshot shows the user interface with 'admin', 'Help', and 'Logout' buttons at the top. A red arrow points to the 'Help' button. Below, a sidebar lists various application settings, with 'Comparison and Modeling' highlighted. The main content area provides instructions for enabling and configuring face comparison features.

before you start

- For certain camera models, you need to enable the **Comparison Mode** on **VCA Resource** (Configuration > System > System Settings) page to show the function.
- You should first create a face picture library and add face pictures. Get detailed instruction on **Face Picture Library** page.

Steps

1. Enter configuration page, and select **Face Picture Comparison** to start configuration.
2. Check to enable face picture comparison function.
3. (Optional) If you want to receive face comparison information during Multi-Target-Type Capture alarm, check **Report Face Comparison Information During Multi-Target-Type Capture Alarm**.
4. Set desired information to upload for face comparison.
 - Report Face Comparison Information During Multi-Target-Type Capture Alarm**: when a person triggers the multi-target-type detection, the alarm information will include the face comparison result of the detected person if the function is enabled.
 - Face Information Uploading**: you can select to upload information of successful comparison or failed comparison or both. It is required for Linked Comparison Alarm settings.
 - Trigger Alarm Output**: you can select to trigger alarm output by successful comparison or failed comparison or both.
5. Select a comparison mode.
 - Best Comparison**: the device captures and compares the target face continuously when the face target stays in the detection area, and upload the best scored face picture and related alarm information when the target face leaves the area.
 - Quick Comparison**: the device capture and compares the target face when the face grading exceeds the set **Face Grading Threshold for Capture**.

Face Grading Threshold for Capture: the face grading threshold for the device to judge whether to capture and upload the face or not.

Max. Capture Interval: the max. interval between two captures when the target is in the detection area. The camera makes the capture when it reaches the max. interval even if the face grading does not reach the set threshold.

Quick Setup Mode: Custom, Face Attendance, and Face Recognition are selectable. Select according to actual using scenarios. In custom mode, you can set **Comparison Timeout** and **Comparison Times**.

6. Select a face picture library, set the arming schedule and linkage method for the selected face picture library.

2. Now the pupil settings of face counting has added.

The screenshot shows the 'Rule' configuration page for 'People Counting Deduplication'. The 'Min. Pupil Distance' is set to 38 and 'Max. Pupil Distance' is set to 2400. A red box highlights these two settings. Below the settings, there is a live video feed showing a detection area with a red box and a yellow line. The video feed also displays 'IPD Max' and 'Enter: 38', 'Leave: 15', 'POSD: 0', and 'Deduplication: 1'.

For more details please refer to the release note.

Location

You can find the firmware and release note on Portal:

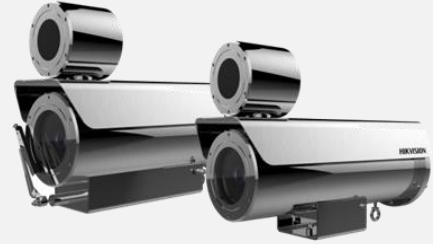
http://www.hikvisioneurope.com/portal/?dir=portal/Technical%20Materials/00%20%20Network%20Camera/00%20%20Product%20Firmware/H7%20Platform%28iDS-2CD7XXX%29/V5.5.122_Build200805

G3 Platform Explosion proof Camera V5.5.153

The latest firmware version of G3 Platform Explosion proof Camera V5.5.153 build 200730 has been released.

Compatible Models

For G3 Platform DS-2XC66X5G0-IZHRS,
DS-2XE64X2FWD-IZHRS Series Explosion proof Camera.



New Features

1. Newly release the below models:

DS-2XE6422FWD-IZHRS (8-32mm)(B), DS-2XE6442F-IZHRS(2.8-12mm)(8-32mm)(B), DS-2XE6482F-IZHRS(2.8-12mm)(8-32mm)(B);

DS-2XC6625G0-IZHRS(8-32mm)/(2.8-12mm), DS-2XC6625G0-IZHRS(8-32mm)/(2.8-12mm),
DS-2XC6685G0-IZHRS(8-32mm)/(2.8-12mm).

The mirror enables as Center mode by default.

The wiper will work for 1 time when powering on. Then click one time of wiper button in the web interface, the wiper will work for 12 times continuously, and if we click the wiper button during the process, it will stop work right away.

Fan is NO by default.

Mainboard and front-end board are heat up for the models with heater.

Modification Features

1. Optimize the performance of focus:

1) It won't refocus when switching the ICR.

2) It won't refocus before and after rebooting the camera.

2. Modify the name of ONVIF to Open Network Video Interface. The user manual and help document will modify synchronously.

For more details please refer to the release note.

Location

You can find the firmware and release note on Portal:

<http://www.hikvisioneurope.com/portal/?dir=portal/Technical%20Materials/00%20%20Network%20Camera/00%20%20Product%20Firmware/G3%20platform%282XE64X2F%2C2XC66X5G0%29>

Temperature Measurement Terminals V2.2.6

The latest firmware version of V2.2.6 Build 200629 for the temperature measurement terminals has been released.

Compatible Models

DS-K1TA70MI-T

DS-K1T671TM-3XF

DS-K5671-3XF

DS-K5604A-3XF/V

New Features

- 7 inch LCD (10.1 inch for DS-K5604A) touch screen with large screen ratio, 2 MP wide-angle dual lens camera with WDR feature;
- Temperature screening and face mask detection related function
 - Vanadium Oxide uncooled sensor to measure forehead temperature: range: 30 °C to 45 °C (86 °F to 113 °F), accuracy: 0.1 °C deviation: ± 0.5 °C (± 0.3 °C with black body)
 Device Model: DS-K1TA70MI-T DS-K1T671TM-3XF DS-K5604A-3XF DS-K5671-3XF Firmware Version ARM: ACS_671_3XF_AI3_EN_GM_V2.2.6_build200629 MCU: ACS_DS-K1T671_ST1_GML_GM_V1.0.1_build200327 Thermal Module: digicap_thermo-en-gm_V5.5.4_build200602
 SDK
 HCNetsDKV6.1.4.151_build20200601_win32_ZH
 HCISUPSDKV2.3.5.152_build20200518_Win32_ZH
 iVMS-4200 Version
 iVMS-4200 AC(V1.2.50.8_E).exe
 - Fast temperature measurement mode (temperature measurement only mode, enabled by default): measuring forehead temperature without authentication., if temperature is abnormal, door will not open
 - Face mask wearing alert (reminder of wearing face must, disabled by default): if the recognizing face does not wear a mask, the device will prompt a voice reminder, and the authentication or attendance is valid.
 - Forced mask wearing alert (must wear face mask, disabled by default): the device will prompt a voice reminder, the authentication will be failed and door will not open without face mask detected.
 Note: All of temperature screening parameters are configurable from device local GUI or remote on iVMS-4200 or HikCentral Professional platform software
 - Support switch between Celsius and Fahrenheit units and temperature compensation function (picture on the left below)
 - Search logs by abnormal temperature (picture on the right above) Note: if device in temperature measurement only mode, the event will not be saved in device)
 - Support black body correction to get more accurate temperature measurement results Note: 1) Black body should be purchased separately. 2) DS-K1TA70MI-T doesn't support black body.
- Support multiple languages: English, Spanish, French, German, Italian, Portuguese, Polish, Russian, Thai, Arabic
- Face, card, fingerprint and event capacity
- Network Support TCP/IP, adapt to LAN(network) network environment Note: only DS-K5671-3XF support WIFI
 Note: face terminal and thermal module communicate internally with IP address 192.168.1.2 and 192.168.1.64, don't use these two IP address for device and PC in case of IP conflict. Don't set IP address 192.168.1.64 for terminal, or thermal module will become offline. and don't set IP address 192.168.1.2 for PC/server, or device cannot communicate with PC/server.



Temperature Measurement Terminals V2.2.6

6. Video intercom; a. Video intercom with platform or client software; b. Video intercom with master station c. Video intercom with normal indoor station to realize video&audio intercom, or with DSKC001(call room number 1) monitoring tablet to realize video&audio intercom, upload captured picture and temperature measurement result, shown as below picture.
7. Function
 - a. Displays temperature measurement results on the authentication page
 - b. Triggers voice prompt and alarm output when detecting abnormal temperature
 - c. Transmits online and offline temperature information to iVMS4200 client software or HikCentral Profession platform via TCP/IP communication and saves the data on PC/server.
 - d. Support ISAPI protocol for easier integration with 3rd party platform, upload event temperature and mask information in real-time;
 - e. Multiple verification modes: card, face, QR code (DS-K1TA70MI-T does not support QR code)
 - f. Face recognition in dark environment;
 - g. Face recognition and temperature measurement distance ranges from 0.3 to 2 meters;
 - h. Live face detection function with 3 levels: Normal, High and Higher
 - i. Remote live view via RTSP protocol; encoding mode: H.264
 - j. Support check in/check out/break out/break in/overtime in/overtime out attendance status;
8. Related accessories:
 - a. Base bracket, DS-DM0701BL Suitable for DS-K1TA70MI-T and DS-K1T671TM-3XF
 - b. Floor stand, DS-KAB671-B Suitable for DS-K1TA70MI-T and DS-K1T671TM-3XF
 - c. Base, DS-KAB6-Base Suitable for DS-KAB671-B floor stand and DS-K5604A-3XF/V face recognition terminal, install in the bottom of floor stand or terminal to stabilize the device. For more details please refer to the release note.

Location

You can find the firmware and release note on Portal:

http://www.hikvisioneurope.com/portal/?dir=portal/Technical%20Materials/06%20%20Access%20Control/00%20%20Product%20Firmware/Temperature%20Screening/Temperature%20Measurement%20Terminal/%20DS-K1T671TM-3XF_DS-K5604_DS-K5671/V2.2.6%20Build%20200629%20

Vandal-Proof Doorbell DS-KB8113-IME1 V2.2.1

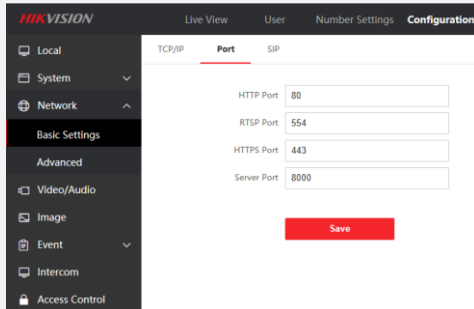
The latest FW V2.2.1 Build 20200806 for the DS-KB8113-IME1 vandal resistant doorbell has been released.

[Compatible Models](#)

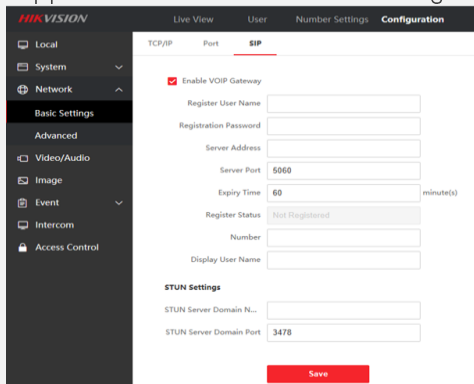
DS-KB8113-IME1

[New Features](#)

1. Support RTSP port configuration

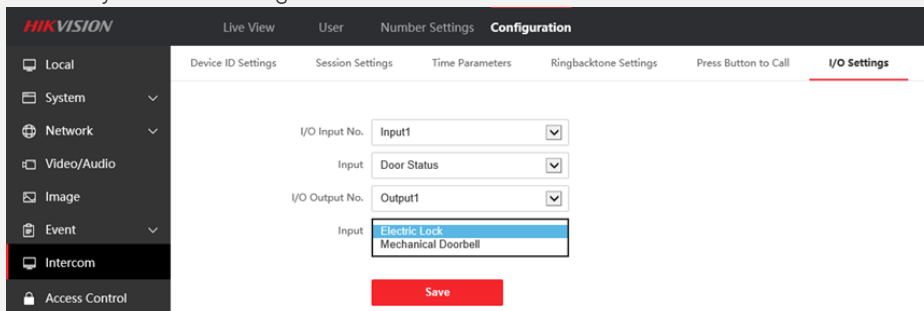


2. Support SIP call timeout time configuration



3. The standard SIP account length is extended to 32 bits

4. The relay can be configured as a mechanical doorbell or electric lock

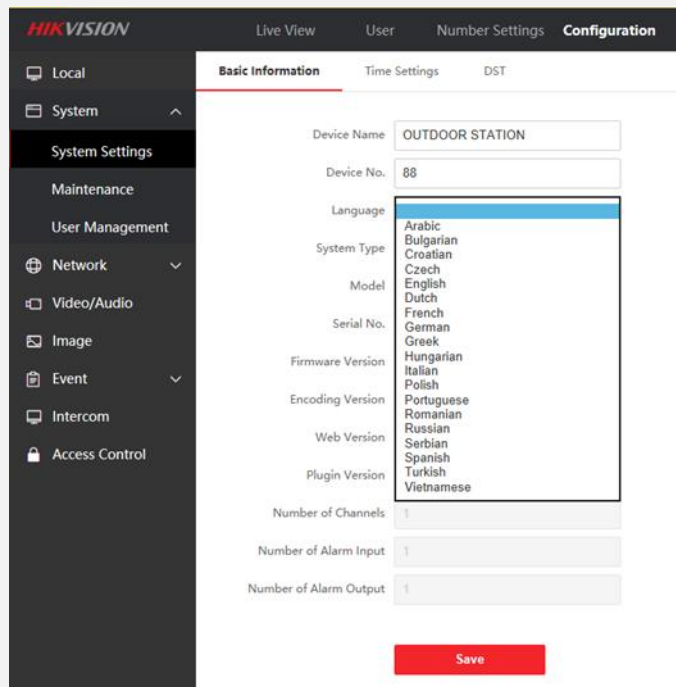


5. Support Hik-Connect

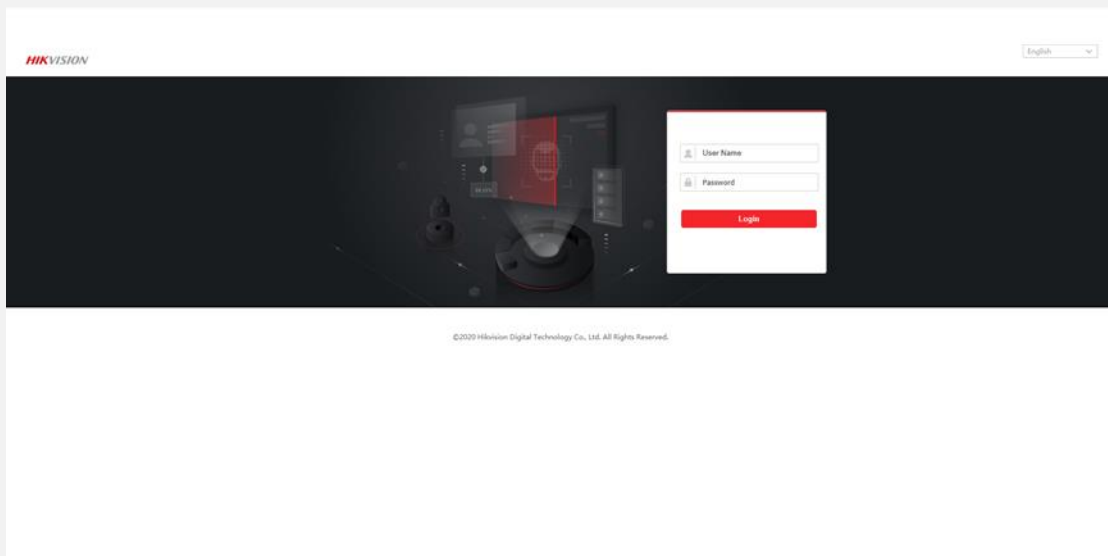
- (1) Hik-Connect supports call record query
- (2) Support synchronized time
- (3) Support volume adjustment
- (4) Support Hik-Connect remote unlocking
- (5) Motion detection area and sensitivity configuration

6. Support multi-language in 19 countries

Vandal-Proof Doorbell DS-KB8113-IME1 V2.2.1



7. Device can automatically activate/configure the indoor station (when the indoor station is inactive)
8. New web interface



For more details please refer to the release note.

[Location](#)

You can find the firmware and release note on Portal:

<http://www.hikvisioneurope.com/portal/?dir=portal/Technical%20Materials/07%20%20Video%20Intercom/00%20%20Product%20Firmware/IP%20Door%20Bells/DS-KB8113-IME1>

Temperature Measurement Terminals V2.2.6 Build 200909

The latest firmware version of V2.2.6 Build Build 200909 for the temperature measurement terminals has been released.

Compatible Models

DS-K1TA70MI-T

DS-K1T671TM-3XF

DS-K5671-3XF

DS-K5604A-3XF/V

Modification Features

1. Optimize the performance of the camera and temperature screening module;
For more details please refer to the release note.

Location

You can find the firmware and release note on Portal:

http://www.hikvisioneurope.com/portal/?dir=portal/Technical%20Materials/06%20%20Access%20Control/00%20%20Product%20Firmware/Temperature%20Screening/Temperature%20Measurement%20Terminal/%20DS-K1T671TM-3XF_DS-K5604_DS-K5671/V2.2.6%20Build%20200909



Hikvision Tools Manager V1.1.0.5

The latest firmware version of Hikvision Tools Manager V1.1.0.5 has been released.

New Features

1. Added supporting downloading Device Log Analyzer, Hikvision Photo Cleaner, VSPlayer (64bit).
 - Updated the versions and icons of Lens Selection Tool and Batch Configuration Tool.
2. SADPTool
 - Supports prompt about remaining attempts and locking time for failed password reset.
3. Hikvision MVA
 - Supports searching alarms to view the alarm time, captured pictures and related videos.
4. Hikvision Photo Cleaner
 - Hikvision Photo Cleaner is a tool software used to analyze and convert the face pictures to meet the requirements of devices (DeepinMind NVR or facial recognition camera). Before the face pictures are imported to the face library or the face comparison group of the devices, the face picture format and picture name format can be converted to the required formats. The tool can help to improve the efficiency of processing unqualified pictures.
5. Hikvision Lens Selection
 - Added intersection violation mode and checkpoint mode.
 - Supports selecting one of the three modes (normal mode, intersection violation mode and checkpoint mode) when running the software.
 - Supports adjusting horizontal field of view for vari-focal lens in 2D view.
6. Batch Configuration
 - Added filtering devices by device type.
 - Added module upgrade for access control devices.
 - Added applying APP packages to indoor stations.
 - Supports adding access control devices and video intercom devices.
 - Supports batch configuring device parameters for access control devices.
 - Supports batch configuring device parameters for video intercom devices.
7. Device Log Analyzer
 - Device Log Analyzer is a software used to analyze system logs of access control device, turnstile, etc. Two analysis methods are supported: online analysis and offline analysis. For online analysis, the online device can be added to the software, and software can get the realtime system log of the device for analysis. For offline analysis, system log file of the device can be uploaded to the software for analysis. By analysis results, the technical supports can view the keywords of the issue and the keywords comments, which are helpful for troubleshooting and locating the issue quickly. Besides, you can also search the commands of the frequently issues.
8. VSPlayer (64-bit)
 - Supports playing high-resolution (1080p) video.
9. VSPlayer
 - Added setting privacy masks.

For more details please refer to the release note.

Location

You can find the firmware and release note on Portal:

<https://www.hikvision.com/en/support/tools/destop-tools/hikvision-tools-manager-/>

Hik-Connect V4.7.0 (Android & iOS)

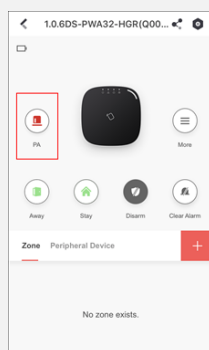
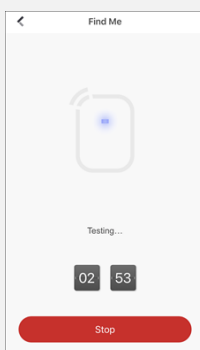
The latest Hik-Connect version V4.7.0 for Android and iOS has already been released



Hik-Connect

New Features

1. NVR/DVR
 - 1.Supports recording custom audio and setting it as the sound alarm for camera linked to DVR.
Note: The associated device will be released soon.
 - 2.Supports enabling network cascading for NVR and viewing the related network topology.
Note: The associated device will be released soon.
2. AX Pro
 - 1.Supports enabling Find Me process for a peripheral device to find it. In the process, the peripheral device's indicator will flash.
 - 2.Supports more detectors.
 - 3.Supports forbidding bypassing zone.
 - 4.Supports setting cross zone.
 - 5.Supports key zone.
3. Axiom Hub
 - 1.Supports enabling panel l lockup (only available in installer account). When enabled, the installer user can still operate the security control panel, while the admin user will not be allowed to operate it.
 - 2.Supports manually activating panic alarm by tapping the PA icon.
 - 3.Supports editing area name.
 - 4.Supports enabling silent panic alarm for keyfob/keypad. When enabled, no linked alarm output (e.g., sound prompt) will be triggered when panic alarms of the keyfob/keypad is triggered.
 - 5.Supports enabling Double Knock and setting Double Knock Time Interval for a specific detector to avoid false alarms. After that, the detector will only alarm when it is triggered for two times within a specified time.
 - 6.Supports setting different linkage types for relays linked to wireless output expander.
 - 7.Supports more features of wireless siren. Supports volume test for wireless siren. Supports arming/disarming buzzer. Supports arming/disarming LED indicator.
4. Axiom Hybrid
 - 1.Supports setting event linkage for wired siren, including alarm, arming, disarming, manual mapping, and zone (zone triggered or tampered).
5. Site Management
 - 1.Supports receiving notifications about the availability (blocked or unblocked) of the devices rent from the Installer. If a rent device is blocked by the Installer, the end user is not allowed to operate the device via the Hik-Connect Mobile Client; If unblocked, allowed.
6. Others
 - 1.Supports enabling/disabling the light of ColorVu camera.
 - 2.Supports remotely controlling the door linked to the access controller shared by another user.



Hik-Connect V4.4.0 (Android & iOS)

Optimization

1. Site Management

1.Moved the entry of the Site Management module to the upper side of the More page to make the entry more conspicuous.

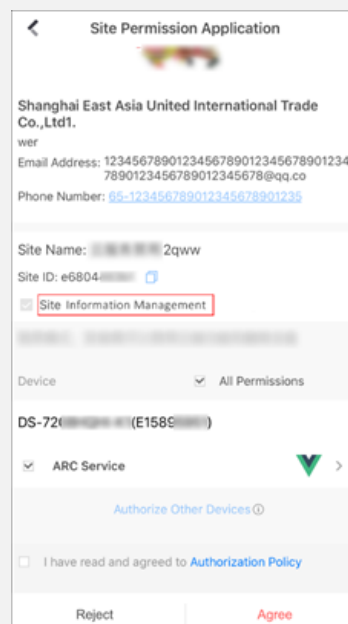
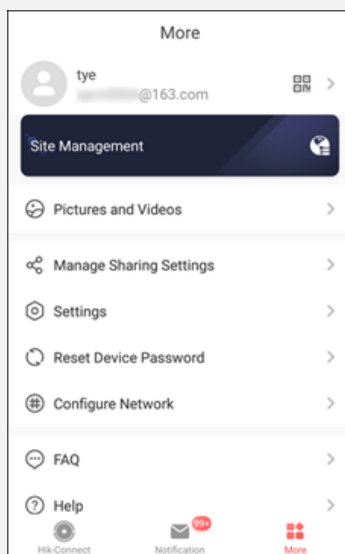
2.Supports entering the Site Details page directly after tapping the Service in Use field on the Settings page of a specific device.

3.Supports displaying logo and brief introduction of the Installer on the Site Details page.

4.Added Site Information Management checkbox on the Site Permission Application page. The checkbox is checked by default and not editable, representing that the Installer will have the Site Information Management permission if you agree the application (request).

5.Supports displaying the results of the site permission applications on the Service tab of the Notification page.

6.Supports displaying the authorization status (i.e., if the device is authorized to an Installer) of a specific device on the device list.



2. Others

1.Optimized the account registration procedures. Simplified the account registration procedures. Supports searching regions by region number.

2.Supports automatically refreshing the device list.

For more details please refer to the Released Notes.

Location

For IOS: App Store

For Android:

1. Access to the domain directly: <https://www.me-app.net/HikvisionAppStore>

2. Enter Support-Tools-Hikvision App Store Through the official website

<https://appstore.hikvision.com>

3. Scans the app download QR code in the equipment packaging box / QSG/ local GUI of the device.

DS-2CE56, 71, 72, 78 Series Analog Camera

Reason of Change

Product Package Bag Change

Description of Change

Change Before	Change After
 <p>Bubble package bag (take turren as example)</p>	 <p>Transparent PE package bag (take turren as example)</p>
 <p>Foam package bag (take turren as example)</p>	
 <p>Anti-dust package bag (take turren as example)</p>	

DS-2DY5223, 9236, 9225, 9250, 7236 Series Positioning System

Reason of Change

Remove the photosensitive sensor, and replace by software

Description of Change

Change Before



Change After



DS-2CD2TX6G1-4I/SL Series IP Camera

Reason of Change

Bullet 46, Bullet 57 are added with waterproof tape.

Description of Change



DS-2CE11H0T-PIRL, DS-2CE12H0T-PIRL, D9T Series Analog Camera

Reason of Change

Product specification change and multi-language update.

Description of Change

Change Before	Change After
<p>Multi-language specification and product manual/QSG</p>	<p>A product specification with 18 languages.</p>

DS-2CE10, 12, 70, 72DF8T-FSLN Series Analog Camera

Reason of Change

Software update.

Description of Change

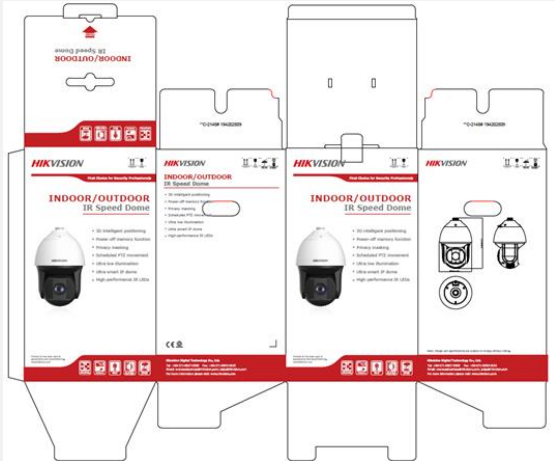

Change Before	Change After
None	<ol style="list-style-type: none"> 1. Add an image mode that support DVR menu interface. 2. Camera will response DVR linkage alarm only on condition that white light under AUTO mode.

DS-2DF8 Series PTZ Camera

Reason of Change

The color of DF8 package changes to black.

Description of Change

Change Before	Change After
 <p>The image shows the 'Change Before' packaging design for the DS-2DF8 Series PTZ Camera. It features a white background with red accents. The top flap has the HIKVISION logo and 'INDOOR/OUTDOOR IR Speed Dome'. The main body of the box is white with a red horizontal band at the bottom. The front panel displays the camera image, technical specifications, and safety icons. The side panels also feature the HIKVISION logo and product details.</p>	 <p>The image shows the 'Change After' packaging design for the DS-2DF8 Series PTZ Camera. It features a black background with red accents. The top flap has the HIKVISION logo and 'INDOOR/OUTDOOR IR Speed Dome'. The main body of the box is black with a red horizontal band at the bottom. The front panel displays the camera image, technical specifications, and safety icons. The side panels also feature the HIKVISION logo and product details.</p>

DS-2CD6626B-IZHS, DS-2CD6652B-IZHS Series Anti-Corrosion IP Camera

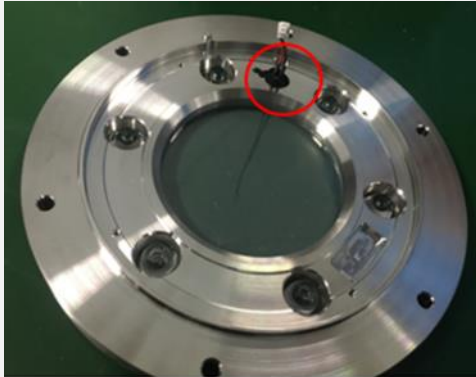
Reason of Change

Remove the photoresistance.

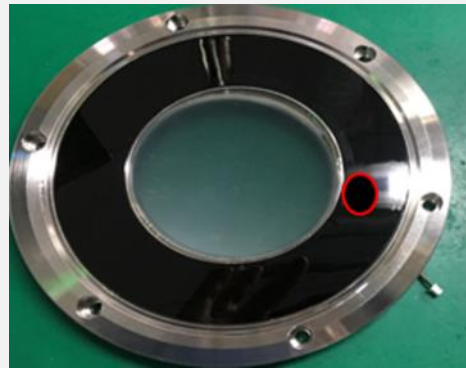
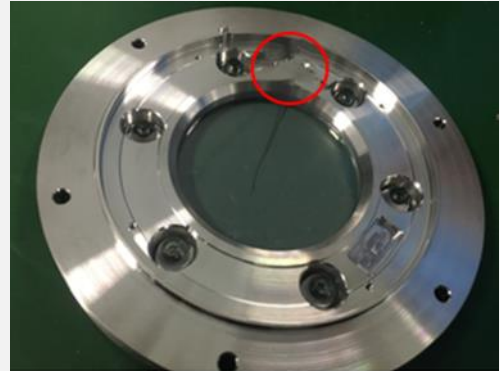
Description of Change

Remove the photoresistance.

Change Before



Change After



DS-2CD3 Series IP Camera

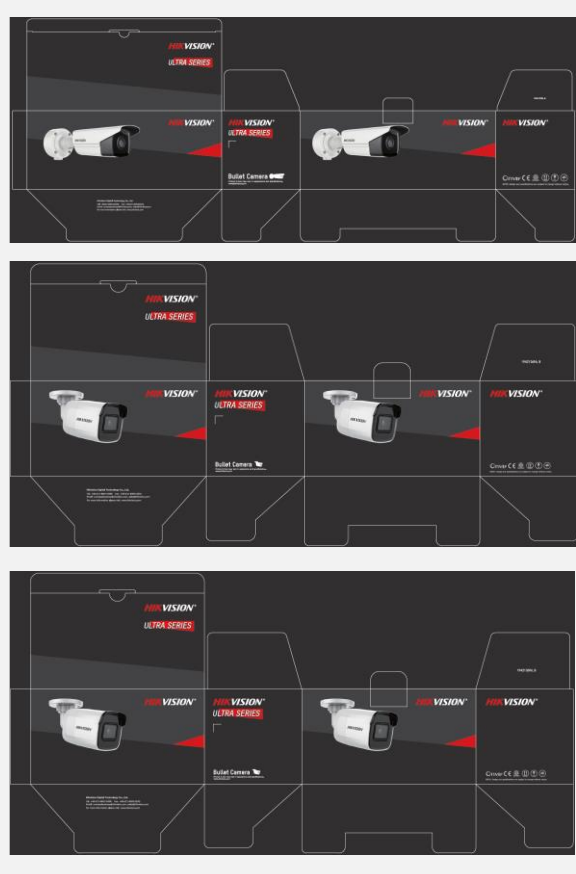
Reason of Change

The package requirement of 3 series is changed.

Description of Change

Change Before

Change After


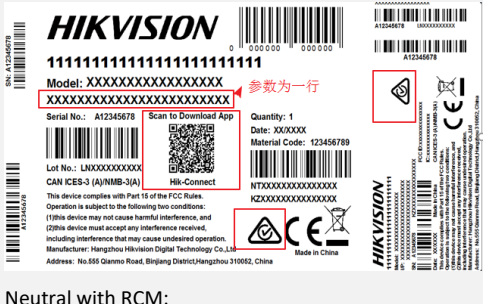
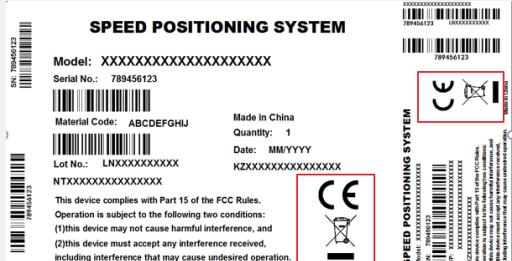



Some DS-2DY5\7\9 Series Positioning System Camera

Reason of Change

Upgrade the label and update the label parameter content.

Description of Change

Change Before	Change After
<p>No RCM certification mark; 4 rows for parameter content on box.</p>  <p>参数为四行</p>	<p>Add RCM certification mark; only 1 row for parameter content on box; add QR code for App download.</p>  <p>参数为一行</p>
<p>Neutral without RCM:</p> 	<p>Neutral with RCM:</p> 
<p>Refer format(example): AC: On device AC24V, 110W MAX On box (4 rows)</p> <div style="border: 1px solid black; padding: 5px;"> <p>2MP / 1/2.8" CMOS / 25(P)/30(N)fps@1920iA1080 Color:0.05Lux@F1.5,B/W:0.001Lux@F1.5 True Day&Night/36X opticalzoom/IP66 四行显示 IR:150 m / AC24V , 110W MAX</p> </div> <p>DC: On device DC12V, 45W MAX On box (4 rows)</p> <div style="border: 1px solid black; padding: 5px;"> <p>2MP / 1/1.9" CMOS / 25(P)/30(N)fps@1920iA1080 Color:0.005Lux@F1.6,B/W:0.0005Lux@F1.5 True Day & Night / 3D-DNR / 23X optical zoom IR distance:180m / IP66 / DC12V, 45W MAX</p> </div>	<p>Refer format(example): AC: On device 24V~8.0A,50/60Hz On box (1 row)</p> <p>2MP/36X</p> <p>DC: On device</p> <div style="border: 1px solid black; padding: 5px;"> <p>I/P: 12V==4.0A</p> </div> <p>On box (1 row)</p> <p>2MP/23X</p>

DS-2CD6D54G1-IZ, DS-2CD6NEUD54G1-ZS/RC Series IP Camera

Reason of Change

Newly add the R direction control.

Description of Change

Newly add the R direction control.



Some DS-2DE, DS-2DY3320, DS-2DY3220 Series PTZ Camera

Reason of Change

Upgrade the waterproof cap to improve waterproof performance.

Description of Change

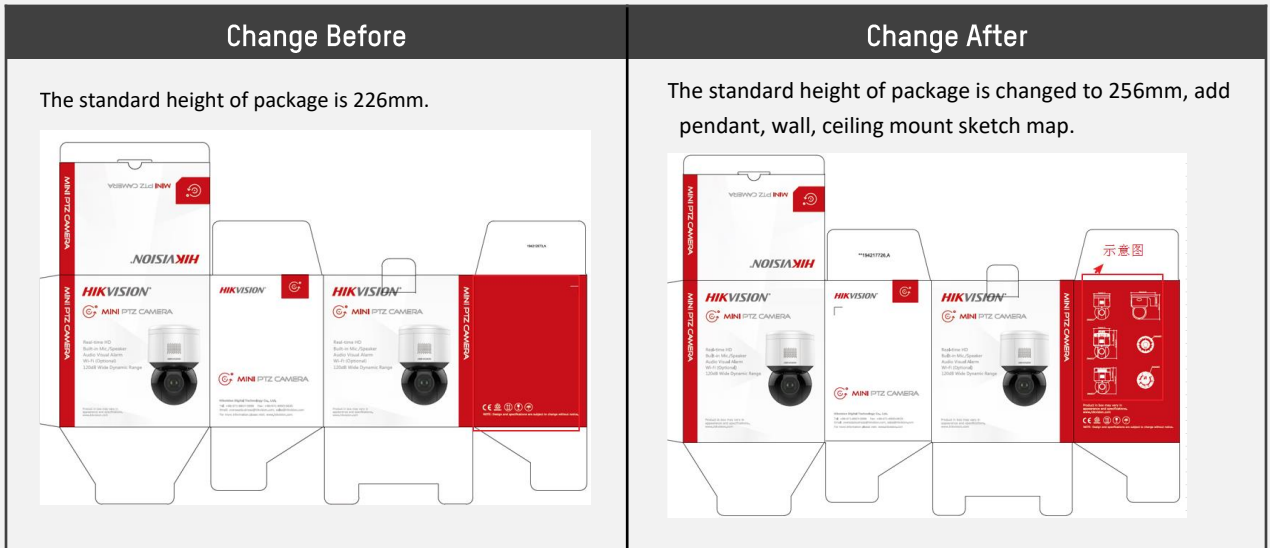


DS-2DE3A204IW-DE, DS-2DE3A404IW-DE Series PTZ Camera

Reason of Change

Package upgrade.

Description of Change

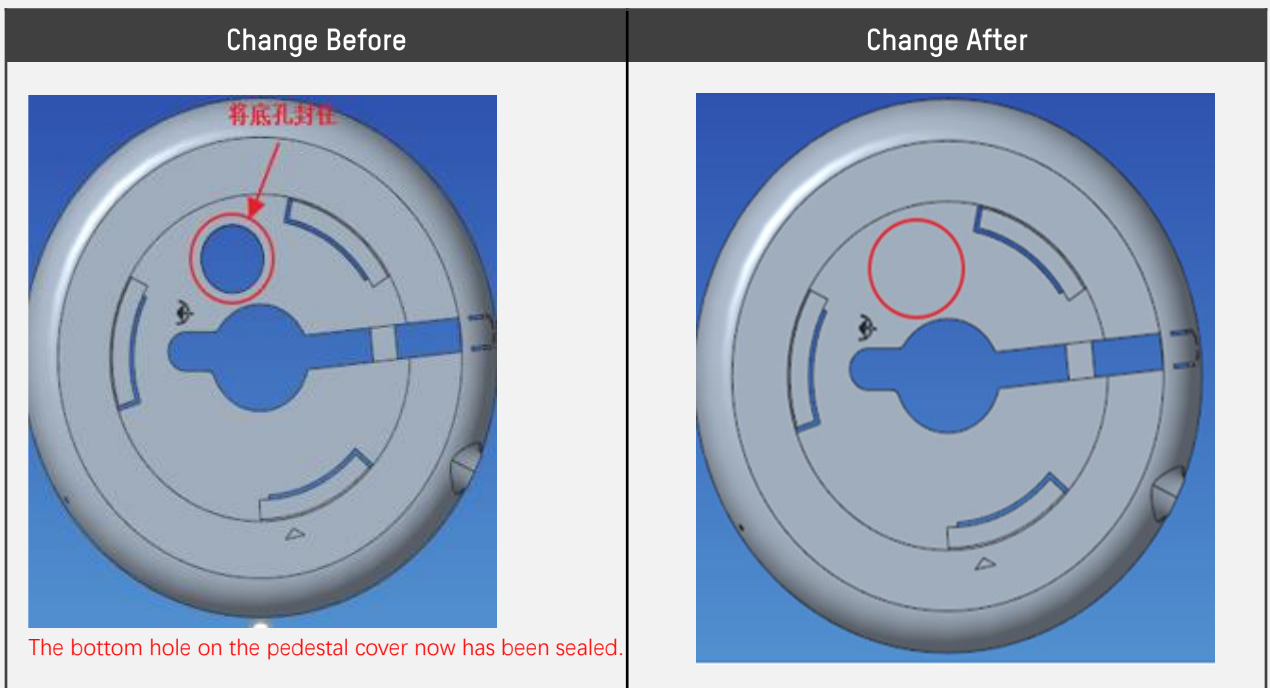


NK4XW1H-1T, DS-2CD21X1G1-IDW1, DS-2CD2123G0D-IW2 Wifi Camera&Kit

Reason of Change

Change of dome 39's pedestal cover.

Description of Change

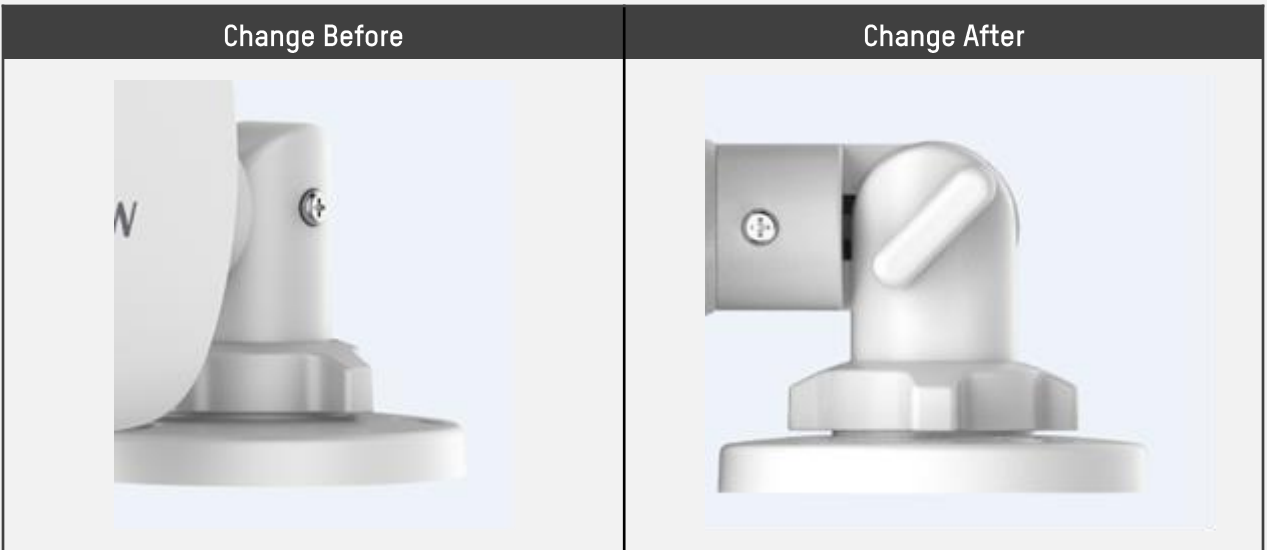


DS-2CE12D0T-PIRXF, DS-2CE12DFT-PIRX0F28, DS-2CE17H0T-IT, DS-2CE17D0T-IT
Series Analog Camera

Reason of Change

Bracket change.

Description of Change



DS-2CE16H0T-ITXF Series Analog Camera

Reason of Change

Update the appearance of camera, remove photosensitive module.

Description of Change



CE DOC Documents update on Portal

Type	Order Name	File Name	Download Link
IPC	DS-2CD2T26G2-ISU SL(4mm)	DOC DS-2CD2T26G2-ISU SL(4mm)	http://www.hikvisioneurope.com/portal/?dir=portal/Technical%20Materials/00%20%20Netwo rk%20Camera/03%20%20Produ ct%20Certifications/DS-2CD2xxx/DOC
IPC	DS-2CD2T46G2-ISU SL(4mm)	DOC DS-2CD2T46G2-ISU SL(4mm)	
IPC	DS-2CD2T86G2-ISU SL(2.8mm)	DOC DS-2CD2T86G2-ISU SL(2.8mm)	
IPC	DS-2CD1043G0E-I(2.8mm)	DOC DS-2CD1043G0E-I(2.8mm)	
IPC	DS-2CD1143G0E-I(2.8mm)	DOC DS-2CD1143G0E-I(2.8mm)	
IPC	DS-2CD1343G0E-I(2.8mm)	DOC DS-2CD1343G0E-I(2.8mm)	
IPC	DS-2CD2026G2-IU SL(2.8mm)	DOC DS-2CD2026G2-IU SL(2.8mm)	
IPC	DS-2CD2046G2-IU SL(2.8mm)	DOC DS-2CD2046G2-IU SL(2.8mm)	
IPC	DS-2CD2046G2-IU SL(4mm)	DOC DS-2CD2046G2-IU SL(4mm)	
IPC	DS-2CD2121G0-I(2.8mm)	DOC DS-2CD2121G0-I(2.8mm)	
IPC	DS-2CD2185G0-IMS(2.8mm)	DOC DS-2CD2185G0-IMS(2.8mm)	
IPC	DS-2CD2326G2-ISU SL(2.8mm)	DOC DS-2CD2326G2-ISU SL(2.8mm)	
IPC	DS-2CD2346G2-ISU SL(2.8mm)	DOC DS-2CD2346G2-ISU SL(2.8mm)	
IPC	DS-2CD2386G2-ISU SL(4mm)	DOC DS-2CD2386G2-ISU SL(4mm)	
IPC	DS-2CD2626G2-IZSU SL(2.8-12mm)	DOC DS-2CD2626G2-IZSU SL(2.8-12mm)	
IPC	DS-2CD2646G2-IZSU SL(2.8-12mm)	DOC DS-2CD2646G2-IZSU SL(2.8-12mm)	
IPC	DS-2CD2686G2-IZSU SL(2.8-12mm)	DOC DS-2CD2686G2-IZSU SL(2.8-12mm)	

CE DOC Documents update on Portal

Type	Order Name	File Name	Download Link
Analog Camera	DS-2CE10DF8T-F(2.8mm)	DOC DS-2CE10DF8T-F(2.8mm)	http://www.hikvisioneurope.com/portal/?dir=portal/Technical%20Materials/04%20%20HD-TVI%20Camera/02%20%20Product%20Certifications
Analog Camera	DS-2CE12DF8T-F(2.8mm)	DOC DS-2CE12DF8T-F(2.8mm)	
Analog Camera	DS-2CE16D0T-EXIPF(3.6mm)	DOC DS-2CE16D0T-EXIPF(3.6mm)	
Analog Camera	DS-2CE16D0T-EXIF(3.6mm)	DOC DS-2CE16D0T-EXIF(3.6mm)	
Analog Camera	DS-2CE16D0T-ITPFS(3.6mm)	DOC DS-2CE16D0T-ITPFS(3.6mm)	
Analog Camera	DS-2CE16U1T-ITPF(3.6mm)	DOC DS-2CE16U1T-ITPF(3.6mm)	
Analog Camera	DS-2CE17D0T-IT3F(2.8mm)(C)	DOC DS-2CE17D0T-IT3F(2.8mm)(C)	
Analog Camera	DS-2CE17D0T-IT3F(3.6mm)(C)	DOC DS-2CE17D0T-IT3F(3.6mm)(C)	
Analog Camera	DS-2CE17H0T-IT3F(2.8mm)(C)	DOC DS-2CE17H0T-IT3F(2.8mm)(C)	
Analog Camera	DS-2CE17H0T-IT3F(3.6mm)(C)	DOC DS-2CE17H0T-IT3F(3.6mm)(C)	
Analog Camera	DS-2CE17H0T-IT5F(3.6mm)(C)	DOC DS-2CE17H0T-IT5F(3.6mm)(C)	
Analog Camera	DS-2CE17H0T-IT3F(2.8mm)(C)	DOC DS-2CE17H0T-IT3F(2.8mm)(C)	
Analog Camera	DS-2CE56D8T-IRS(2.8mm)	DOC DS-2CE56D8T-IRS(2.8mm)	
Analog Camera	DS-2CE70DF8T-MF(2.8mm)	DOC DS-2CE70DF8T-MF(2.8mm)	
Analog Camera	DS-2CE70DF8T-MF(3.6mm)	DOC DS-2CE70DF8T-MF(3.6mm)	
Analog Camera	DS-2CE76D0T-EXIPF(2.8mm)	DOC DS-2CE76D0T-EXIPF(2.8mm)	
Analog Camera	DS-2CE76D0T-EXIMF(3.6mm)	DOC DS-2CE76D0T-EXIMF(3.6mm)	
Analog Camera	DS-2CE76D0T-ITPFS(2.8mm)	DOC DS-2CE76D0T-ITPFS(2.8mm)	
Analog Camera	DS-2CE76H0T-ITPF(C)	DOC DS-2CE76H0T-ITPF(C)	
Analog Camera	DS-2CE76H0T-ITMF(C)	DOC DS-2CE76H0T-ITMF(C)	
Analog Camera	DS-2CE76U1T-ITPF(2.8mm)	DOC DS-2CE76U1T-ITPF(2.8mm)	
Analog Camera	DS-2CS54C8T-PH(2.8mm)	DOC DS-2CS54C8T-PH(2.8mm)	
PTZ	DS-2DE2A204IW-DE3(2.8-12mm)(C)	DOC DS-2DE2A204IW-DE3(2.8-12mm)(C)	

CE DOC Documents update on Portal

Type	Order Name	File Name	Download Link
PTZ	DS-2DE4215W-DE(C)	DOC DS-2DE4215W-DE(C)	http://www.hikvisioneurope.com/portal/?dir=portal/Technical%20Materials/01%20%20PTZ%20Camera/03%20%20Product%20Certifications
PTZ	DS-2DE5320W-AE3	DOC DS-2DE5320W-AE3	
PTZ	DS-2DE5330W-AE3	DOC DS-2DE5330W-AE3	
IPC	DS-2CD2021G1-IDW1(4mm)(D)	DOC DS-2CD2021G1-IDW1(4mm)(D)	http://www.hikvisioneurope.com/portal/?dir=portal/Technical%20Materials/00%20%20Network%20Camera/03%20%20Product%20Certifications/DS-2CD2xxx/DOC
IPC	DS-2CD2021G1-IW(4mm)(D)	DOC DS-2CD2021G1-IW(4mm)(D)	
IPC	DS-2CD2041G1-IDW1(2.8mm)(D)	DOC DS-2CD2041G1-IDW1(2.8mm)(D)	
IPC	DS-2CD2051G1-IDW1(2.8mm)(D)	DOC DS-2CD2051G1-IDW1(2.8mm)(D)	
IPC	DS-2CD2121G0-IW(4mm)(D)	DOC DS-2CD2121G0-IW(4mm)(D)	
IPC	DS-2CD2121G0-IWS(2.8mm)(D)	DOC DS-2CD2121G0-IWS(2.8mm)(D)	
IPC	DS-2CD2121G1-IDW1(4mm)(D)	DOC DS-2CD2121G1-IDW1(4mm)(D)	
IPC	DS-2CD2141G1-IDW1(2.8mm)(D)	DOC DS-2CD2141G1-IDW1(2.8mm)(D)	
IPC	DS-2CD2421G0-IDW(2.8mm)(W)	DOC DS-2CD2421G0-IDW(2.8mm)(W)	
IPC	DS-2CD2421G0-IW(4mm)(W)	DOC DS-2CD2421G0-IW(4mm)(W)	
IPC	DS-2CD2423G0-IW(4mm)(W)	DOC DS-2CD2423G0-IW(4mm)(W)	
IPC	DS-2CD2425FWD-IW(2.8mm)(W)	DOC DS-2CD2425FWD-IW(2.8mm)(W)	
IPC	DS-2CD2443G0-IW(4mm)(W)	DOC DS-2CD2443G0-IW(4mm)(W)	
IPC	DS-2CD2463G0-IW(2.8mm)(W)	DOC DS-2CD2463G0-IW(2.8mm)(W)	
IPC	DS-2CD2523G0-IWS(2.8mm)(D)	DOC DS-2CD2523G0-IWS(2.8mm)(D)	
IPC	DS-2CD2525FWD-IWS(2.8mm)(D)	DOC DS-2CD2525FWD-IWS(2.8mm)(D)	
IPC	DS-2CD2543G0-IWS(4mm)(D)	DOC DS-2CD2543G0-IWS(4mm)(D)	
IPC	DS-2CD2543G0-IWS(2.8mm)(D)	DOC DS-2CD2543G0-IWS(2.8mm)(D)	
IPC	DS-2CD2545FWD-IWS(2.8mm)(D)	DOC DS-2CD2545FWD-IWS(2.8mm)(D)	
IPC	DS-2CD2555FWD-IWS(2.8mm)(D)	DOC DS-2CD2555FWD-IWS(2.8mm)(D)	
IPC	DS-2CD2563G0-IWS(4mm)(D)	DOC DS-2CD2563G0-IWS(4mm)(D)	

CE DOC Documents update on Portal

Type	Order Name	File Name	Download Link
IPC	DS-2CV2Q21FD-IW(2.0mm)(W)FUS	DOC DS-2CV2Q21FD-IW(2.0mm)(W)FUS	http://www.hikvisioneurope.com/portal/?dir=portal/Technical%20Materials/00%20%20Network%20Camera/03%20%20Product%20Certifications/DS-2CV2xxx/DOC
IPC	DS-2CV2U21FD-IW(2.8mm)(W)FUS	DOC DS-2CV2U21FD-IW(2.8mm)(W)FUS	
IPC	DS-2CV1021G0-IDW1(4mm)(D)FUS	DOC DS-2CV1021G0-IDW1(4mm)(D)FUS	
IPC	DS-2CV2021G2-IDW(2.8mm)(D)FUS	DOC DS-2CV2021G2-IDW(2.8mm)(D)FUS	
IPC	DS-2CV2026G0-IDW(2.8mm)(D)FUS	DOC DS-2CV2026G0-IDW(2.8mm)(D)FUS	
IPC	DS-2CV2026G0-IDW(4mm)(D)FUS	DOC DS-2CV2026G0-IDW(4mm)(D)FUS	
IPC	DS-2CV2041G2-IDW(2.8mm)(D)FUS	DOC DS-2CV2041G2-IDW(2.8mm)(D)FUS	
IPC	DS-2CV2046G0-IDW(2.8mm)(D)FUS	DOC DS-2CV2046G0-IDW(2.8mm)(D)FUS	
IPC	DS-2CD3026G2-IS(2.8mm)	DOC DS-2CD3026G2-IS(2.8mm) DS-2CD3056G2-IS(2.8mm) DS-2CD3086G2-IS(2.8mm) DS-2CD3086G2-IS(4mm)	
IPC	DS-2CD3056G2-IS(2.8mm)		
IPC	DS-2CD3086G2-IS(4mm)		
IPC	DS-2CD3086G2-IS(2.8mm)		
IPC	DS-2CD3026G2-IUSL(2.8mm)	DOC DS-2CD3026G2-IUSL(2.8mm) DS-2CD3056G2-IUSL(2.8mm)	
IPC	DS-2CD3056G2-IUSL(2.8mm)		
IPC	DS-2CD3156G2-IS(2.8mm)	DOC DS-2CD3126G2-IS(2.8mm) DS-2CD3156G2-IS(2.8mm)	
IPC	DS-2CD3126G2-IS(2.8mm)		
IPC	DS-2CD3185G0-IMS(4mm)	DOC DS-2CD3185G0-IMS(2.8mm) DS-2CD3185G0-IMS(4mm)	
IPC	DS-2CD3185G0-IMS(2.8mm)		
IPC	DS-2CD3326G2-IS(2.8mm)	DOC DS-2CD3326G2-IS(2.8mm) DS-2CD3356G2-IS(2.8mm) DS-2CD3386G2-IS(2.8mm)	
IPC	DS-2CD3356G2-IS(2.8mm)		
IPC	DS-2CD3386G2-IS(2.8mm)		
IPC	DS-2CD3326G2-ISUSL(2.8mm)	DOC DS-2CD3326G2-ISUSL(2.8mm) DS-2CD3356G2-ISUSL(4mm)	
IPC	DS-2CD3356G2-ISUSL(4mm)		

CE DOC Documents update on Portal

Type	Order Name	File Name	Download Link	
IPC	DS-2CD3626G2T-IZS(2.7-13.5mm)	DOC DS-2CD3626G2T-IZS(2.7-13.5mm) DS-2CD3656G2T-IZS(2.7-13.5mm) DS-2CD3686G2T-IZS(2.7-13.5mm)	http://www.hikvisioneurope.com/portal/?dir=portal/Technical%20Materials/00%20%20Network%20Camera/03%20%20Product%20Certifications/DS-2CD3xxx/DOC	
IPC	DS-2CD3686G2T-IZS(2.7-13.5mm)			
IPC	DS-2CD3656G2T-IZS(2.7-13.5mm)			
IPC	DS-2CD3726G2T-IZS(2.7-13.5mm)	DOC DS-2CD3726G2T-IZS(2.7-13.5mm) DS-2CD3756G2T-IZS(2.7-13.5mm) DS-2CD3786G2T-IZS(2.7-13.5mm)		
IPC	DS-2CD3756G2T-IZS(2.7-13.5mm)			
IPC	DS-2CD3786G2T-IZS(2.7-13.5mm)			
IPC	DS-2CD3T26G2-4IS(4mm)	DOC DS-2CD3T26G2-4IS(4mm) DS-2CD3T56G2-4IS(2.8mm) DS-2CD3T86G2-4IS(2.8mm)		http://www.hikvisioneurope.com/portal/?dir=portal/Technical%20Materials/00%20%20Network%20Camera/03%20%20Product%20Certifications/DS-2CD4xxx/DOC
IPC	DS-2CD3T56G2-4IS(2.8mm)			
IPC	DS-2CD3T86G2-4IS(2.8mm)			
IPC	DS-2CD3T26G2-ISUSL(2.8mm)	DOC DS-2CD3T26G2-ISUSL(2.8mm) DS-2CD3T56G2-ISUSL(4mm)		
IPC	DS-2CD3T56G2-ISUSL(4mm)			
IPC	DS-2CD4A45G0-IZHS(4.7-94mm)(B)	DOC DS-2CD4A45G0-IZHS(4.7-94mm)(B) DS-2CD4B25G0-IZS(4.7-65.8mm)(B)		
IPC	DS-2CD4B25G0-IZS(4.7-65.8mm)(B)			
IPC	DS-2CD4B45G0-IZS(4.7-65.8mm)(B)			
IPC	DS-2CD6425G0 F-11(3.7mm)2m	DOC DS-2CD6425G0 F-11(3.7mm)2m	http://www.hikvisioneurope.com/portal/?dir=portal/Technical%20Materials/00%20%20Network%20Camera/03%20%20Product%20Certifications/DS-2CD6xxx/DOC	
IPC	DS-2CD6425G0 F-21(2.8mm)2m	DOC DS-2CD6425G0 F-21(2.8mm)2m		
IPC	DS-2CD6425G0 F-31(4mm)8m	DOC DS-2CD6425G0 F-31(4mm)8m		
IPC	DS-2CD6425G0-20(2.8mm)2m	DOC DS-2CD6425G0-20(2.8mm)2m DS-2CD6425G0-20(2.8mm)8m		
IPC	DS-2CD6425G0-20(2.8mm)8m			
IPC	DS-2CD6425G0F-31(4mm)2m	DOC DS-2CD6425G0F-31(4mm)2m		
IPC	DS-2CD6924G0-IHS NFC(2.8mm)	DOC DS-2CD6924G0-IHS NFC(2.8mm) DS-2CD6924G0-IHS(2.8mm)		
IPC	DS-2CD6924G0-IHS(2.8mm)			
IPC	DS-2CD6984G0-IHSAC(2.8mm)	DOC DS-2CD6984G0-IHSAC(2.8mm)		

CE DOC Documents update on Portal

Type	Order Name	File Name	Download Link	
PTZ	DS-2DF5225X-AE3(T3)	DOC DS-2DF5225X-AE3(T3) DS-2DF5232X-AE3(T3)	http://www.hikvisioneurope.com/portal/?dir=portal/Technical%20Materials/01%20%20PTZ%20Camera/03%20%20Product%20Certifications/DS-2DF5xxx/DOC	
PTZ	DS-2DF5232X-AE3(T3)			
PTZ	DS-2DF5225X-AEL(T3)	DOC DS-2DF5225X-AEL(T3) DS-2DF5232X-AEL(T3)		
PTZ	DS-2DF5232X-AEL(T3)			
PTZ	DS-2DF6225X-AEL(O-STD)(T3)	DOC DS-2DF6225X-AEL(O-STD)(T3)	http://www.hikvisioneurope.com/portal/?dir=portal/Technical%20Materials/01%20%20PTZ%20Camera/03%20%20Product%20Certifications/DS-2DF6xxx/DOC	
PTZ	DS-2DF6225X-AELY(O-STD)(T3)	DOC DS-2DF6225X-AELY(O-STD)(T3)		
PTZ	DS-2DF6A236X-AEL(T3)	DOC DS-2DF6A236X-AEL(T3) DS-2DF6A236X-AELY(T3) DS-2DF6A436X-AEL(T3) DS-2DF6A436X-AELY(T3) DS-2DF6A225X-AEL(T3) DS-2DF6A425X-AEL(T3)		
PTZ	DS-2DF6A236X-AELY(T3)			
PTZ	DS-2DF6A436X-AEL(T3)			
PTZ	DS-2DF6A436X-AELY(T3)			
PTZ	DS-2DF6A225X-AEL(T3)			
PTZ	DS-2DF6A425X-AEL(T3)			
PTZ	DS-2DF7225IX-AEL(T3)	DOC DS-2DF7225IX-AEL(T3)		http://www.hikvisioneurope.com/portal/?dir=portal/Technical%20Materials/01%20%20PTZ%20Camera/03%20%20Product%20Certifications/DS-2DF7xxx/DOC
PTZ	DS-2DF7225IX-AELW(T3)	DOC DS-2DF7225IX-AELW(T3) DS-2DF7232IX-AEL(T3) DS-2DF7232IX-AELW(T3)		
PTZ	DS-2DF7232IX-AEL(T3)			
PTZ	DS-2DF7232IX-AELW(T3)			
PTZ	DS-2DF8225IX-AEL	DOC DS-2DF8225IX-AEL DS-2DF8425IX-AEL DS-2DF8225IX-AELW DS-2DF8242IX-AEL DS-2DF8425IX-AELW DS-2DF8250I5X-AEL etc	http://www.hikvisioneurope.com/portal/?dir=portal/Technical%20Materials/01%20%20PTZ%20Camera/03%20%20Product%20Certifications/DS-2DF8xxx/DOC	
PTZ	DS-2DF8425IX-AEL			
PTZ	DS-2DF8225IX-AELW			
PTZ	DS-2DF8242IX-AEL			
PTZ	DS-2DF8425IX-AELW			
PTZ	DS-2DF8250I5X-AEL			
PTZ	DS-2DF8250I5X-AELW			
PTZ	DS-2DF8250I8X-AEL			
PTZ	DS-2DF8250I8X-AELW			
PTZ	DS-2DF8436I5X-AELW			

CE DOC Documents update on Portal

Type	Order Name	File Name	Download Link
PTZ	DS-2DF8242IX-AELW(T3)	DOC DS-2DF8242IX-AELW(T3) DS-2DF8242I5X-AELW(T3)	http://www.hikvisioneurope.com/portal/?dir=portal/Technical%20Materials/01%20%20PTZ%20Camera/03%20%20Product%20Certifications/DS-2DF8xxx/DOC
PTZ	DS-2DF8242I5X-AELW(T3)		
PTZ	DS-2DF8242IX-AELY(T3)	DOC DS-2DF8242IX-AELY(T3) DS-2DF8242IX-AELWY(T3)	
PTZ	DS-2DF8242IX-AELWY(T3)		
PTZ	DS-2DF8442IXS-AEL(T2)	DOC DS-2DF8442IXS-AEL(T2) DS-2DF8442IXS-AELW(T2)	
PTZ	DS-2DF8442IXS-AELW(T2)		
PTZ	DS-2DF9C435IHS-DLW(T2)	DOC DS-2DF9C435IHS-DLW(T2) DS-2DF9C245IHS-DLW(T2) DS-2DF9C435I5HS-DLW(T2)	http://www.hikvisioneurope.com/portal/?dir=portal/Technical%20Materials/01%20%20PTZ%20Camera/03%20%20Product%20Certifications/DS-2DF9Cxxx/DOC
PTZ	DS-2DF9C245IHS-DLW(T2)		
PTZ	DS-2DF9C435I5HS-DLW(T2)		
PTZ	DS-2DP1618ZIXS-DE 440 T2(2.8mm)	DOC DS-2DP1618ZIXS-DE 440 T2(2.8mm) DS-2DP2427ZIXS-DE 440 T2(2.8mm) DS-2DP0818ZIXS-DE 440 T2(2.8mm)	http://www.hikvisioneurope.com/portal/?dir=portal/Technical%20Materials/01%20%20PTZ%20Camera/03%20%20Product%20Certifications/PanoVu%28the%29/DOC
PTZ	DS-2DP2427ZIXS-DE 440 T2(2.8mm)		
PTZ	DS-2DP0818ZIXS-DE 440 T2(2.8mm)		
PTZ	DS-2DP3236ZIXS-D 440 T2(2.8mm)	DOC DS-2DP3236ZIXS-D 440 T2(2.8mm) DS-2DP6436ZIXS-D 836 T2(2.8mm) DS-2DP3218ZIXS-D 836 T2(2.8mm)	
PTZ	DS-2DP6436ZIXS-D 836 T2(2.8mm)		
PTZ	DS-2DP3218ZIXS-D 836 T2(2.8mm)		
PTZ	DS-2DY9236IX-A(T3)	DOC DS-2DY9236IX-A(T3) DS-2DY9236I8X-A(T3)	http://www.hikvisioneurope.com/portal/?dir=portal/Technical%20Materials/01%20%20PTZ%20Camera/03%20%20Product%20Certifications/Positioning%28DS-2DY9xxx%29/DOC
PTZ	DS-2DY9236I8X-A(T3)		
PTZ	DS-2DY9236X-A(T3)		
IPC	DS-2XE6025G0-I(4mm)	DOC DS-2XE6025G0-I(4mm) DS-2XE6025G0-IM(4mm)	http://www.hikvisioneurope.com/portal/?dir=portal/Technical%20Materials/00%20%20Network%20Camera/03%20%20Product%20Certifications/DS-2XE6xxx/DOC
IPC	DS-2XE6025G0-IM(4mm)		

CE DOC Documents update on Portal

Type	Order Name	File Name	Download Link
Accessory	DS-2ZMN4007-0IS(D)	DOC DS-2ZMN4007-0IS(D)	http://www.hikvisioneurope.com/portal/?dir=portal/Technical%20Materials/00%20%20Network%20Camera/03%20%20Product%20Certifications/Accessories/DOC
Accessory	DS-2ZMN5007-0IS(D)	DOC DS-2ZMN5007-0IS(D)	
IPC	iDS-2CD7146G0-IZS(2.8-12mm)	DOC iDS-2CD7146G0-IZS(2.8-12mm)	http://www.hikvisioneurope.com/portal/?dir=portal/Technical%20Materials/00%20%20Network%20Camera/03%20%20Product%20Certifications/iDS-2CDxxxx/DOC
IPC	iDS-2CD7A46G0-IZHS(2.8-12mm)	DOC iDS-2CD7A46G0-IZHS(2.8-12mm) iDS-2CD7A26G0P-IZHS(2.8-12mm)	
IPC	iDS-2CD7A26G0P-IZHS(2.8-12mm)		
IPC	iDS-2VS435-F840-EY(T3)	DOC iDS-2VS435-F840-EY(T3)	http://www.hikvisioneurope.com/portal/?dir=portal/Technical%20Materials/01%20%20PTZ%20Camera/03%20%20Product%20Certifications/Traffic%20PTZ%20Camera%28iDS-2VSXXX%29/DOC
DVR	DS-7204HQHI-K1(STD)(S) 1 1T	DOC DS-7204HQHI-K1(STD)(S) 1 1T	http://www.hikvisioneurope.com/portal/?dir=portal/Technical%20Materials/03%20%20DVR/03%20%20Product%20Certifications
DVR	DS-7204HQHI-K1A(EU STD)(S)4A+41ALM	DOC DS-7204HQHI-K1A(EU STD)(S)4A+41ALM	
DVR	DS-7204HUHI-K1-E(STD)(S)	DOC DS-7204HUHI-K1-E(STD)(S)	
DVR	DS-7208HQHI-K1-E(STD)(S)	DOC DS-7208HQHI-K1-E(STD)(S)	
DVR	DS-7208HQHI-K2(EU STD)(S)8A	DOC DS-7208HQHI-K2(EU STD)(S)8A	
DVR	DS-7208HQHI-K2A(EU STD)(S)8A+84ALM	DOC DS-7208HQHI-K2A(EU STD)(S)8A+84ALM	
DVR	DS-7208HUHI-K1-E(STD)(S)	DOC DS-7208HUHI-K1-E(STD)(S)	
DVR	DS-7216HQHI-K1 A(EU STD)(S) 4A+4 1ALM	DOC DS-7216HQHI-K1 A(EU STD)(S) 4A+4 1ALM	
DVR	DS-7216HQHI-K1-E(STD)(S)	DOC DS-7216HQHI-K1-E(STD)(S)	
DVR	DS-7216HQHI-K2(EU STD)(S)16A	DOC DS-7216HQHI-K2(EU STD)(S)16A	
DVR	DS-7216HUHI-K2(EU STD)(S)16A	DOC DS-7216HUHI-K2(EU STD)(S)16A	
DVR	DS-7224HGHI-K2(STD)	DOC DS-7224HGHI-K2(STD)	
DVR	DS-7316HTHI-K4(STD)	DOC DS-7316HTHI-K4(STD)	
DVR	iDS-7204HUHI-M1 FA(STD)	DOC iDS-7204HUHI-M1 FA(STD)	

CE DOC Documents update on Portal

Type	Order Name	File Name	Download Link
DVR	iDS-7204HUHI-M2 FA(STD)	DOC iDS-7204HUHI-M2 FA(STD)	http://www.hikvisioneurope.com/portal/?dir=portal/Technical%20Materials/03%20%20DVR/03%20%20Product%20Certifications
DVR	iDS-7208HQHI-M2 FA(STD)	DOC iDS-7208HQHI-M2 FA(STD)	
DVR	iDS-7208HUHI-M1 FA(STD)	DOC iDS-7208HUHI-M1 FA(STD)	
DVR	iDS-7208HUHI-M2 FA(STD)	DOC iDS-7208HUHI-M2 FA(STD)	
DVR	iDS-7216HQHI-M2 FA(RUS STD) 16A+16 4ALM	DOC iDS-7216HQHI-M2 FA(RUS STD) 16A+16 4ALM	
DVR	DS-7204HQHI-K1-E(STD)(S)	DOC DS-7204HQHI-K1-E(STD)(S)	
DVR	DS-7204HUHI-K1(STD)(S) 1 1T	DOC DS-7204HUHI-K1(STD)(S) 1 1T	
DVR	DS-7208HQHI-K1(STD)(S) 1 2T	DOC DS-7208HQHI-K1(STD)(S) 1 2T	
DVR	DS-7208HQHI-K1A(EU STD)(S)4A+84ALM	DOC DS-7208HQHI-K1A(EU STD)(S)4A+84ALM	
DVR	DS-7208HQHI-K2A(EU STD)(S)4A+84ALM	DOC DS-7208HQHI-K2A(EU STD)(S)4A+84ALM	
DVR	DS-7208HUHI-K1(STD)(S) 1 2T	DOC DS-7208HUHI-K1(STD)(S) 1 2T	
DVR	DS-7208HUHI-K2(EU STD)(S)8A	DOC DS-7208HUHI-K2(EU STD)(S)8A	
DVR	DS-7216HQHI-K1(STD)(S) 1 2T	DOC DS-7216HQHI-K1(STD)(S) 1 2T	
DVR	DS-7216HQHI-K2 A(EU STD)(S) 4A+164ALM	DOC DS-7216HQHI-K2 A(EU STD)(S) 4A+164ALM	
DVR	DS-7216HQHI-K2A(EU STD)(S)16A+164ALM	DOC DS-7216HQHI-K2A(EU STD)(S)16A+164ALM	
DVR	DS-7216HUHI-K2(STD)(S) 1 4T	DOC DS-7216HUHI-K2(STD)(S) 1 4T	
DVR	DS-7232HGHI-K2(STD)	DOC DS-7232HGHI-K2(STD)	
DVR	iDS-7204HUHI-M1 FA A(EU STD) 4A+ALM4 1	DOC iDS-7204HUHI-M1 FA A(EU STD) 4A+ALM4 1	
DVR	iDS-7204HUHI-M2 FA A(EU STD) 4A+4 1ALM	DOC iDS-7204HUHI-M2 FA A(EU STD) 4A+4 1ALM	
DVR	iDS-7208HQHI-M2 FA A(EU STD) 8A+8 4ALM	DOC iDS-7208HQHI-M2 FA A(EU STD) 8A+8 4ALM	

CE DOC Documents update on Portal

Type	Order Name	File Name	Download Link
DVR	iDS-7208HUHI-M1 FA A(EU STD) 8A+ALM8 4	DOC iDS-7208HUHI-M1 FA A(EU STD) 8A+ALM8 4	http://www.hikvisioneurope.com/portal/?dir=portal/Technical%20Materials/03%20%20DVR/03%20%20Product%20Certifications
DVR	iDS-7208HUHI-M2 FA A(EU STD) 8A+8 4ALM	DOC iDS-7208HUHI-M2 FA A(EU STD) 8A+8 4ALM	
DVR	iDS-7216HQHI-M2 FA A(EU STD)16A+16 4ALM	DOC iDS-7216HQHI-M2 FA A(EU STD)16A+16 4ALM	
DVR	iDS-7216HQHI-M2 FA(STD)	DOC iDS-7216HQHI-M2 FA(STD)	
DVR	DS-8116HTHI-K8(STD)	DOC DS-8116HTHI-K8(STD)	
Network Storage	DS-AJ6884D-ODL	DOC DS-AJ6884D-ODL	http://www.hikvisioneurope.com/portal/?dir=portal/Technical%20Materials/02%20%20NVR/03%20%20Product%20Certifications
Data Center	DS-IE1064-03U BA	DOC DS-IE1064-03U BA	http://www.hikvisioneurope.com/portal/?dir=portal/Technical%20Materials/02%20%20NVR/03%20%20Product%20Certifications/12%20Server
Data Center	DS-IX2003-A3U X	DOC DS-IX2003-A3U X	
Data Center	DS-IE1024-03U BA	DOC DS-IE1024-03U BA	
Data Center	DS-IE6332-EL FA(V2)	DOC DS-IE6332-EL FA(V2)	
Data Center	DS-IE1032-03U BA	DOC DS-IE1032-03U BA	
Data Center	DS-IX2001-A3U X	DOC DS-IX2001-A3U X	
Network Storage	DS-AD82012D-ODL	DOC DS-AD82012D-ODL	http://www.hikvisioneurope.com/portal/?dir=portal/Technical%20Materials/02%20%20NVR/03%20%20Product%20Certifications
Data Center	DS-IE1016-03U BA	DOC DS-IE1016-03U BA	http://www.hikvisioneurope.com/portal/?dir=portal/Technical%20Materials/02%20%20NVR/03%20%20Product%20Certifications/12%20Server
Data Center	DS-IE6316-EL FA(V2)	DOC DS-IE6316-EL FA(V2)	
Workstation	DS-WSEWI-T2/4200(STD)/Blazer ACS/E	DOC NVR-Non Wireless Poject Product	http://www.hikvisioneurope.com/portal/?dir=portal/Technical%20Materials/02%20%20NVR/03%20%20Product%20Certifications/01%20DeepinMind%20NVR

CE DOC Documents update on Portal

Type	Order Name	File Name	Download Link
Workstation	DS-WSEWI-T2/4200(STD)/Blazer ACS/E	DOC NVR-Non Wireless Poject Product	http://www.hikvisioneurope.com/portal/?dir=portal/Technical%20Materials/02%20%20NVR/03%20%20Product%20Certifications/01%20DeepinMind%20NVR
NVR	iDS-9632NXI-I8/BA(STD)		
NVR	iDS-6704NXI-I/BA(STD);		
NVR	iDS-6708NXI-I/8F(B)(STD)(3.5" 2TB HDD);		
NVR	iDS-6716NXI-I/16S(B)(STD)(3.5" 2TB HDD);		
NVR	iDS-7716NXI-I4/X(B)(T); iDS-7732NXI-I4/X(B)(T)		
NVR	DS-7608NI-K24G(STD)	DOC DS-7608NI-K24G(STD) DS-7608NI-K28P4G(STD) DS-7616NI-K24G(STD)	http://www.hikvisioneurope.com/portal/?dir=portal/Technical%20Materials/02%20%20NVR/03%20%20Product%20Certifications/11%204G%20NVR/DOC
NVR	DS-7616NI-K24G(STD)		
NVR	DS-7608NI-K28P4G(STD)		