

HIKVISION EUROPE

Monthly External Technical Newsletter

CONTENTS

New Firmware / Software Release
Product Change / FAQ / Tool Chart
Technical Video Update

March 2020

- New Firmware / Software Release
 - [G1 Platform IP Camera V5.6.4](#)
 - [G3 Platform IP Camera V5.5.130](#)
 - [H7 Platform PTZ Camera V5.5.26](#)
 - [DS-K1T500S/501SF V1.1.0](#)
 - [Hik-Connect V4.2.0 \(IOS & Android\)](#)
 - [Lens Selection Tool V2.0.4.1](#)
 - [Batch Configuration Tool V3.0.3.8](#)
- Product Change Notification
 - [DS-2DF9C PTZ Camera](#)
 - [DS-2CE16D0T-ITX Analog Camera](#)
 - [DS-2CD26X3, DS-2CD26X5, DS-2CD26X6, DS-2CD36X3, DS-2CD36X5 IP Camera](#)
 - [DS-2AE7XXXTI-A, DE7XXXIW-AE, DE7A245IX-AES1 PTZ Camera](#)
 - [1,2,3,4 Series Bullet IP Camera](#)
 - [DS-2XE62XXF-IS Explosion-Proof Bullet Camera](#)
- FAQ / Tool Chart/ Technical Video Update
 - [Hikvision Wireless Mini PTZ Camera Performance Videos on YouTube](#)
 - [Hikvision Dual-Directional PanoVu Camera Performance Videos on YouTube](#)

G1 Platform IP Camera V5.6.4

The latest firmware version of G1 Platform IP Camera V5.6.4 build191224 has been released.

Compatible Models

For G1 Platform 2XXX, 3XXX Series Camera.

New Features

1. Optimized focusing effect of varifocal models;
For more details please refer to the release note.

Location

You can find the firmware and release note on Portal:

http://www.hikvisioneurope.com/portal/?dir=portal/Technical%20Materials/00%20%20Network%20Camera/00%20%20Product%20Firmware/G1%20platform%20%28H.265%20DS-2CD2XX5%2C2XX3%2C3XX3%2C3XX5%2CXM67X6%29/2XX5%202XX3%203XX5%203XX3%20XM67X6%28non-Fisheye%29%20Multilanguage/V5.6.4_Build191224



G3 Platform IP Camera V5.5.130

The latest V5.5.130 firmware build 191227 for G3 Platform IP Camera has been released.

Compatible Models

DS-2CD2XX6G2 Series Camera

New Features

1. Motion detection newly supports smart mode (human and vehicle target classification).
2. Fixed-lens model newly support Face Capture.
3. Rule frame and target frame can be overlaid on stream/picture.
4. New add 2/4MP models.

For more details please refer to the release note.

Location

You can find the firmware and release note on Portal:

http://www.hikvisioneurope.com/portal/?dir=portal/Technical%20Materials/00%20%20Network%20Camera/00%20%20Product%20Firmware/G3%20platform%282XX6G2%29/V5.5.130_Build191227



H7 Platform PTZ Camera V5.5.26

The latest Hik-Connect version V3.12.0 for Android and iOS has already been released

New Features

1. Newly support Road Traffic function. Support 100 countries in web browser and display United Kingdom by default;

Improved Features

1. Auto mode in slow shutter is no longer available;
For more details please refer to the Released Notes

Location

You can find the firmware and release note on Portal:

<http://www.hikvisioneurope.com/portal/?dir=portal/Technical%20Materials/01%20%20PTZ%20Camera/00%20%20Product%20Firmware/H7%20series%28DS-2DFxxxX%28T3%29%29/V5.5.26%20build200117>



DS-K1T500S/501SF V1.1.0

The latest V1.1.0 firmware build 191010 for DS-K1T500S/501SF has been released.

Compatible Models

DS-K1T500S/501SF

New Features

1. Enable K1T501SF to call first-generation indoor units (DS-KH6210, DS-KH6310, DS-KH8300, DS-KH8301) and second-generation indoor units (DS-KH8520, DS-KH8350, DS-KH6320), to realize video intercom Function (same as villa door station).
 2. After the indoor unit is bound to Hik-Connect, push the call to the mobile phone and implement the video intercom function.
 3. When the visitor presses the call button to call 4200 or indoor unit or Hik-Connect, after the door is opened remotely, a prompt is added on the local end of the device: The green light for remote door opening flashes and the English voice prompt "Door is open".
 4. Support configuration: When fingerprint or card verification fails, it will automatically call the indoor unit.
 5. Support other access control function of baseline K1T501SF.
- For more details please refer to the release note.

Location

You can find the firmware and release note on Portal:

<http://www.hikvisioneurope.com/portal/?dir=portal/Technical%20Materials/06%20%20Access%20Control/00%20%20Product%20Firmware/Terminal/DS-K1T501SF/Customized>



Hik-Connect V4.2.0 (Android & iOS)

The latest Hik-Connect version V4.2.0 for Android and iOS has already been released

New Features

1. Supports setting motion detection area for network cameras.
2. Supports configuring Wi-Fi network via Access Point for access control devices.
3. Supports viewing video footage of both of the two channels of thermal binoculars when receiving alarm notifications from the devices.
4. Added a new entry for configuring network of Wi-Fi camera on the More page.



Hik-Connect

Optimization

1. Cancelled the displaying of the UI strings that read "Shared Device" on the device list.
2. Changed the error code of the channels of a DVR to "Maximum channels reached" when only one channel of the DVR can stream image data because of device capacity limit.

For more details please refer to the Released Notes

Location

For IOS: App Store

For Android:

1. Access to the domain directly: <https://www.me-app.net/HikvisionAppStore>
2. Enter Support-Tools-Hikvision App Store Through the official website
<http://www.hikvision.com/en>
3. Scans the app download QR code in the equipment packaging box / QSG/ local GUI of device.

Lens Selection Tool V2.0.4.1

The latest Lens Selection Tool version V2.0.4.1 has already been released

Optimization

1. Remove the map view mode.

For more details please refer to the Released Notes

Location

You can find the Firmware and Release Notes on Portal:

<http://www.hikvisioneurope.com/portal/?dir=portal/Technical%20Materials/11%20%20Software/00%20%20Software%20Tool%20Package/08%20%20%20Lens%20Selection%20Tool/Lens%20Selection%20V2.0.4.1>

You can also download from Hikvision official website:

<https://www.hikvision.com/en/support/tools/destop-tools/>



Lens Selection Tool

Batch Configuration Tool V3.0.3.8

The latest Batch Configuration Tool version V3.0.3.8 has been released.

New Features

1. Newly support import/export the Blacklist/Whitelist of the ANPR devices.
2. Newly support the configuration of OSD information, fonts, and channel names.
3. Newly support the configuration of alignment of character overlay.
4. Newly support the configuration function of Ehome parameters.
5. Add the function of export GUID and security questions configuration items during activation.
6. Newly support the function of reset password via GUID and security questions.
7. Newly support the function of reset password via GUID and security questions.

For more details please refer to the release note.

Location

You can find the Firmware and Release Notes on Portal:

<http://www.hikvisioneurope.com/portal/?dir=portal/Technical%20Materials/11%20%20Software/00%20%20Software%20Tool%20Package/11%20%20%20Batch%20Config%20Tool/V3.0.3.8>

You can also download from Hikvision official website:

<https://www.hikvision.com/en/support/tools/desktop-tools/>



Batch Configuration Tool

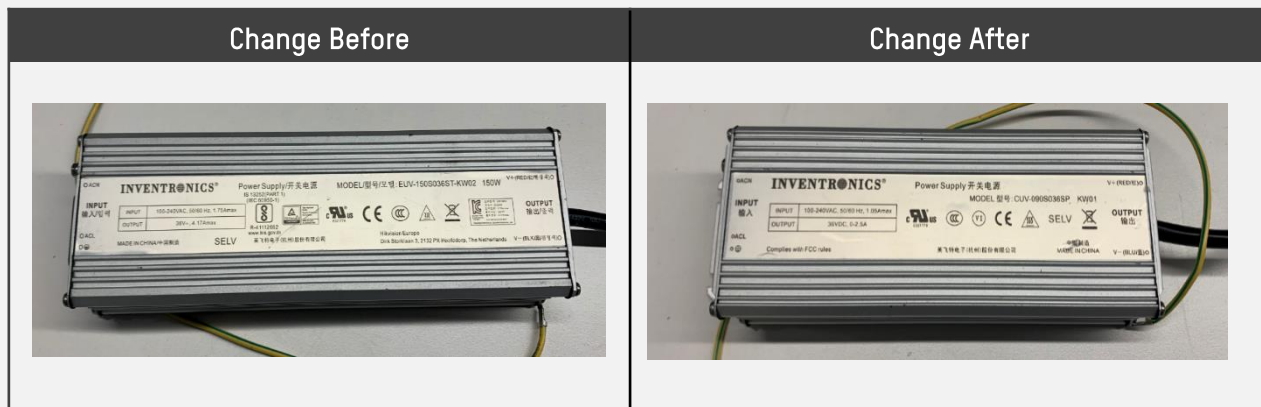
DS-2DF9C PTZ Camera

Reason of Change

Update the power adapter of DF9C series PTZ camera(Synchronous update of tag parameters).

Description of Change

Power adapter for DF9C series changed from 4.17A to 2.5A.

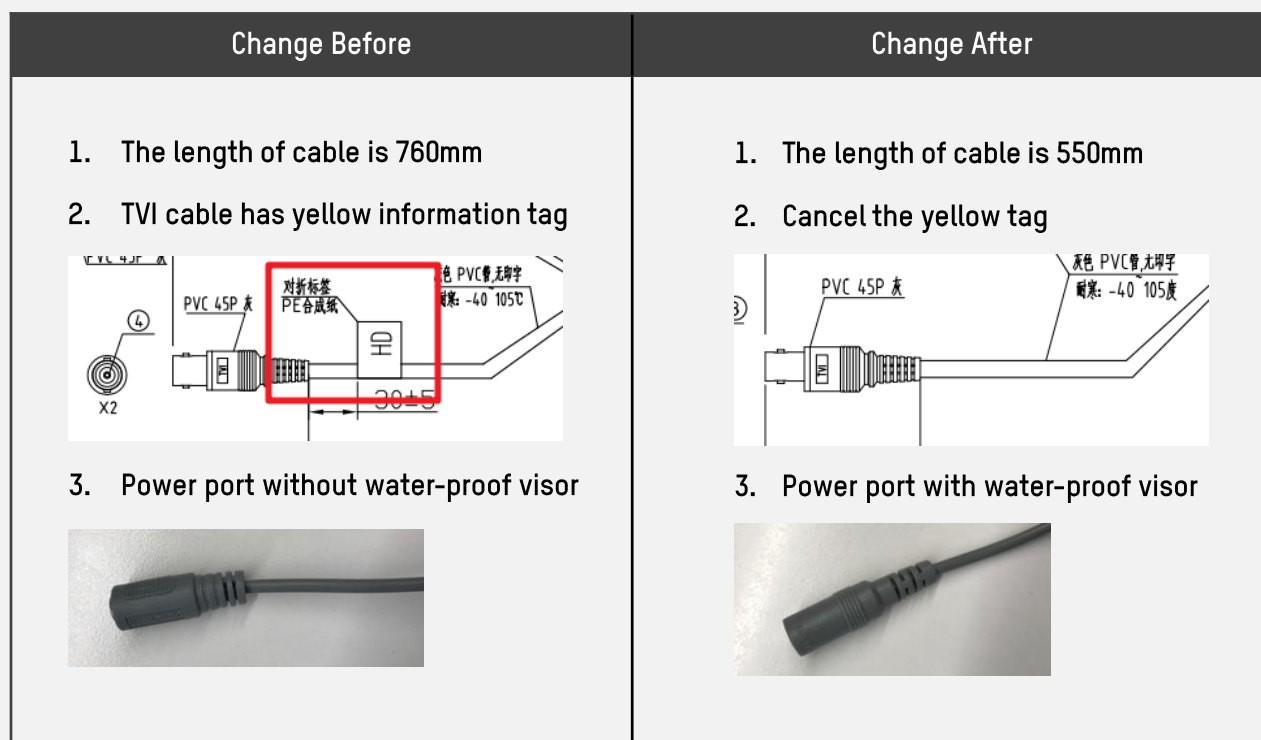


DS-2CE16D0T-ITX Analog Camera

Reason of Change

Analog cable upgrade change.

Description of Change

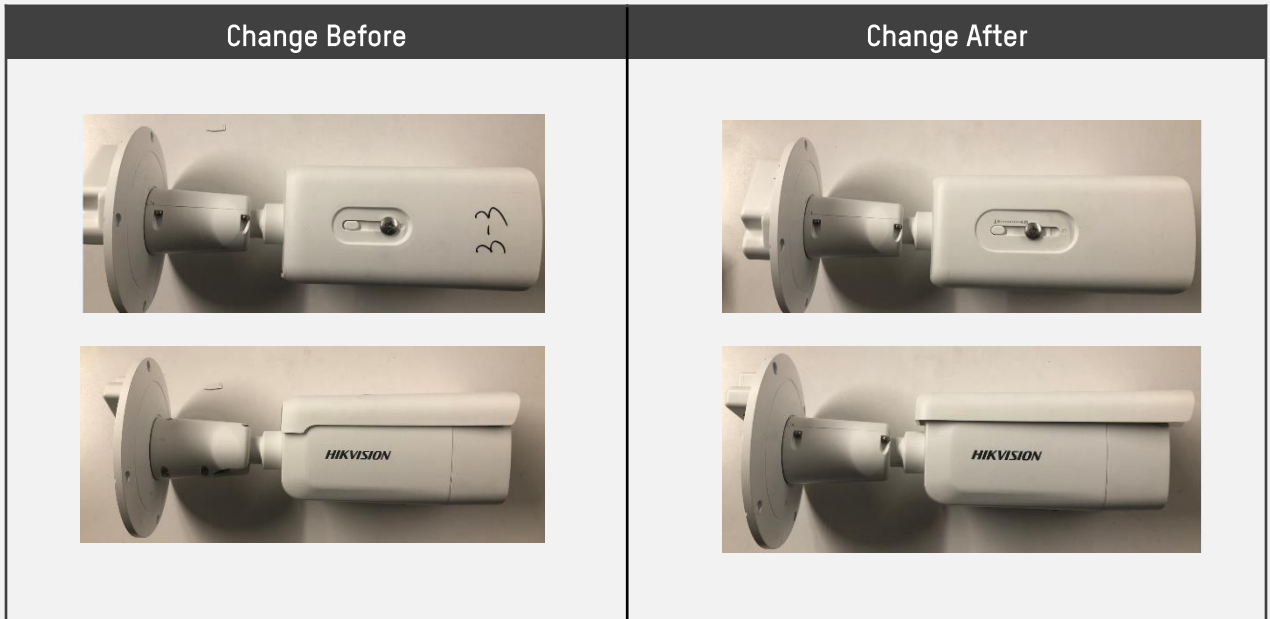


DS-2CD26X3, DS-2CD26X5, DS-2CD26X6, DS-2CD36X3, DS-2CD36X5 IP Camera

Reason of Change

Lengthen sun shade to optimize the effect of rain/sun protection.

Description of Change



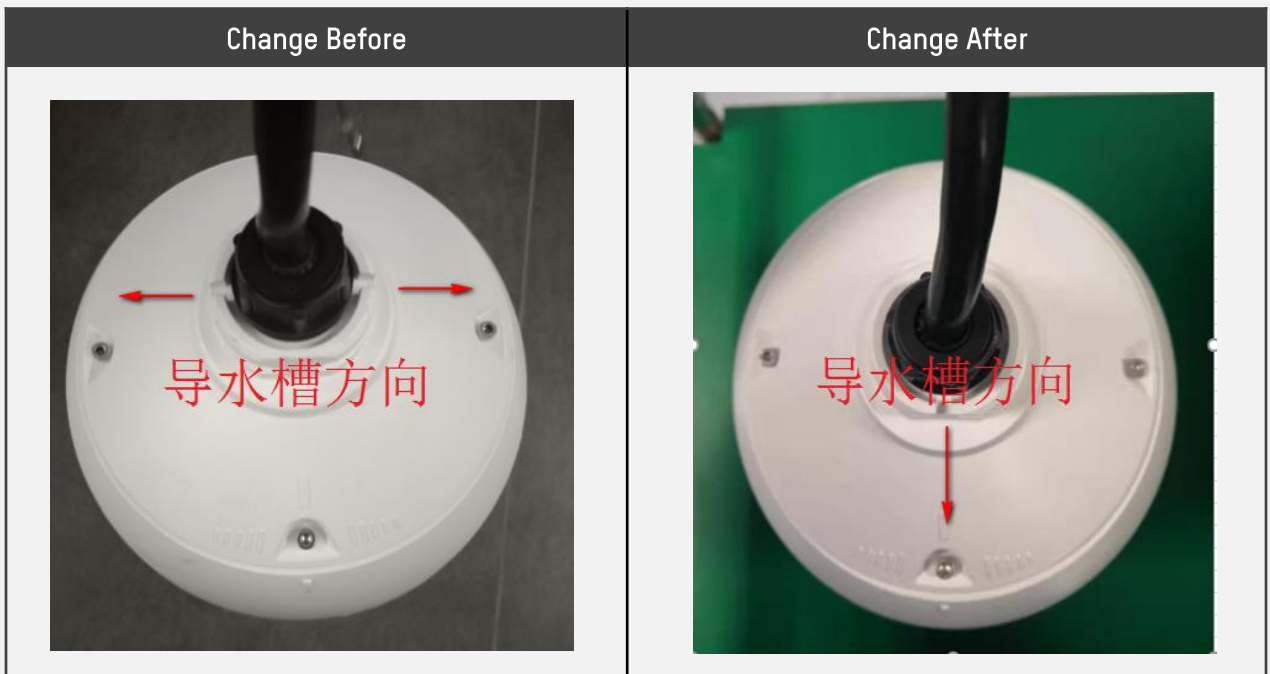
DS-2AE7XXXTI-A, DE7XXXIW-AE, DE7A245IX-AES1 PTZ Camera

Reason of Change

Upgrade the cover structure to optimize the direction of the aqueduct.

Description of Change

Change the direction of the aqueduct, see the figure below for specific changes.



1,2,3,4 Series Bullet IP Camera

Reason of Change

EPE package style upgrade.

Description of Change

Change Before	Change After
<p>Type 1</p>  	<p>Type 1</p>  
<p>Type 2</p> 	<p>Type 2</p>  
<p>Type 3</p>  	<p>Type 3</p>  


DS-2XE62XXF-IS Explosion-Proof Bullet Camera

Reason of Change

Optimize waterproof performance.

Description of Change

Adds waterproof jacket to the Explosion-proof bullet camera.

Change Before	Change After
<p>No waterproof jacket.</p>	

Hikvision Performance Videos on YouTube

Hikvision Wireless Mini PTZ Camera Performance

Hikvision Wireless Mini PTZ featured with affordable price, easy installation & management and high performance is ideally suited for retail, hotels, offices, etc.



Main Features

- ✓ 2560 × 1440 @ 30fps
- ✓ Compact size & Integrated bracket
- ✓ 2.8-12mm
- ✓ Strobe light and audio alarm
- ✓ Built-in speaker and microphone
- ✓ Wi-Fi
- ✓ H.265, H.265+



Location

You can find the performance video via below link:
https://youtu.be/wVUdv0_ut68

Hikvision Performance Videos on YouTube

Hikvision Dual-Directional PanoVu Camera Performance

Hikvision Dual-Directional PanoVu Camera featured with one cable and double flexible channels is ideally suited for Corridor and Corner scenarios.



Dual-Directional PanoVu camera

- 2560 × 1920@ 30fps
- 3-axis adjustment
- 2.8mm(4/6mm optional)
- 120dB WDR
- H.265, H.265+
- IR up to 10 meters
- POE (802.3af)
- IP67, IK10



DS-2CD60S2G0-IHS

HIKVISION

Main Features

- ✓ 2560 × 1920@ 30fps
- ✓ 3-axis adjustment
- ✓ 2.8mm(4/6mm optional)
- ✓ H.265, H.265+
- ✓ IR up to 10 meters
- ✓ POE (802.3af)

Compact and adjustable



3-axis adjustment

HIKVISION

Daytime performance in corridor



IR performance in corridor



Location

You can find the performance video via below link:

<https://youtu.be/gTQk1X7oj4A>