

## Network Camera Firmware

Version: V5.4.0

Release Note(**Internal**)

(2016-04-20)

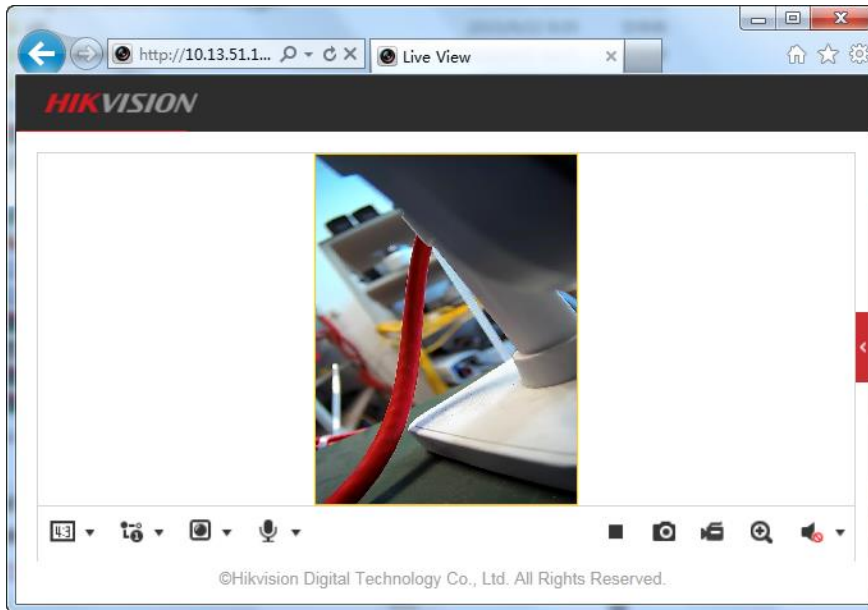
|                                       |   |   |
|---------------------------------------|---|---|
| <b>Firmware<br/>Basic Information</b> | Firmware Version:                                     | V5.4.0                                    |
|                                       | SDK Version:  | V5.1.6.21 build20160401                   |
|                                       | Play Library (PlayCtrl.dll)                           | V7.3.0.74                                 |
|                                       | Encapsulation Library<br>(SystemTransform.dll)        | V2.5.1.7                                  |
|                                       | RTSP Communication Library<br>(StreamTransClient.dll) | V1.1.3.4                                  |
|                                       | Voice intercom library<br>(AudioIntercom.dll)         | V1.3.0.3                                  |
|                                       | Smart configuration library                           | V3.3.9.6                                  |
|                                       | iVMS-4200   | Version 4200 V2.04.06.11<br>build20160405 |
|                                       | IE Client version                                     | V3.0.6.1 build160304                      |

### Hikvision Firmware V5.4.0 Features

*\*for all IPC platforms*

#### 1. New Features

- Support ONVIF2.6 with ONVIF Storage configuration.
- The live view image would auto adjust the rotate mode.



- **Support Online Users: the IP addresses of all online users would be shown in System-> User Management->Online Users.**

User Management **Online Users**

| User List |           |               |            |                     | Refresh |
|-----------|-----------|---------------|------------|---------------------|---------|
| No.       | User Name | Level         | IP Address | User Operation Time |         |
| 1         | admin     | Administrator | 10.11.39.5 | 2016-04-29 11:19:27 |         |

- **Support 29 languages in web browser: Traditional Chinese, English, Russian, Turkish, Japanese, Korean, Thai, Vietnamese, Estonian, Bulgarian, Hungarian, Czech, Slovak, French, Italian, German, Spanish, Portuguese, Polish, Greek, Dutch, Romanian, Finnish, Norwegian, Danish, Swedish, Croatian, Serbian, Slovenian;**
- **In Web browser Configuration->Local->Record File Settings/Picture and Clip Settings, “Open” button is added to open the folders for saving record or snapshots.**

## 2. Improved Features

- **Support domain access to Hik-connect.**

Enable

Platform Access Mode

Server IP   Custom

Register Status

- **Locality and Domain available in HiDDNS configuration;**

TCP/IP **DDNS** PPPoE Port NAT

Enable DDNS

DDNS Type: HiDDNS

Locality: Custom

Server Address: Europe, Asia, America, Africa, Oceania, Custom

Domain: Custom

User Name: Custom

Port: 0

Password:

Confirm:

- **For Hikvision microSD card only, Memory Card Detection is available to show SD card health status and Remaining Lifespan. R/W Lock is also available for Hikvision SD card. Customer is able to set their own password(6-bit number) for their Hikvision SD card and defaulting the camera would not restore the password.**

**Waring: The SD card password cannot be recovered.**

HDD Management Net HDD **Memory Card Detection**

Status Detection R/W Lock Arming Schedule Linkage Method

Remaining Lifespan: 95%

Health Status: Normal

Save

Status Detection **R/W Lock** Arming Schedule Linkage Method

Lock Switch: ON

Password Settings: The password should contain only 6 numerics.

Save

**Notice: 1. The old SD card password is needed to reset new SD card password.**

**2. The R/W Lock interface can be configured when SD card is online by administer account only.**

- **Support softAP(cannot be used with WiFi simultaneously).**
- **Support TLS encryption for Email configuration and STARTTLS option is available.**

SNMP   FTP   **Email**   Platform Access   HTTPS   QoS

---

Sender

Sender's Address

SMTP Server

SMTP Port

E-mail Encryption

Enable STARTTLS

Attached Image

Interval  s

Authentication

- **In Scheduled Image Settings, Saturation can be configured in Day/Night individually.**

**Scheduled Day/Night switch start time and end time can be on different days.**

Common   **Day**   Night

^ Image Adjustment

Brightness

Contrast

**Saturation**

Sharpness

- **Wi-Fi configuration user interface has been improved. Wi-Fi can be enabled or disabled. 64-bit password is supported in Web Component.**

SNMP   FTP   Email   Platform Access   HTTPS   QoS   **Wi-Fi**

---

Enable

| Wireless List |                  |              |               |         |                 |             |                   | Search |
|---------------|------------------|--------------|---------------|---------|-----------------|-------------|-------------------|--------|
| No.           | SSID             | Working Mode | Security Mode | Channel | Signal Strength | Speed(Mbps) | Connection Status |        |
| 1             | Hik-520963995    | Manage       | WPA2-personal | 11      | 80              | 54          | Disconnected      |        |
| 2             | hik-TP-LINK_F116 | Manage       | WPA2-personal | 11      | 48              | 150         | Disconnected      |        |
| 3             | usbtest12-01     | Manage       | WPA2-personal | 11      | 26              | 150         | Disconnected      |        |
| 4             | TP-LINK_4356     | Manage       | WPA2-personal | 1       | 22              | 150         | Disconnected      |        |

- **In FTP configuration, captured images can be categorized. Picture Filing Interval ranges from 1~30 days and the prefix of images can be customized.**

SNMP **FTP** Email HTTPS QoS 802.1x

---

Server Address

Port

User Name   Anonymous

Password

Confirm

Directory Structure  ▼

Parent Directory  ▼

Picture Filing Interval  ▼ Day(s)

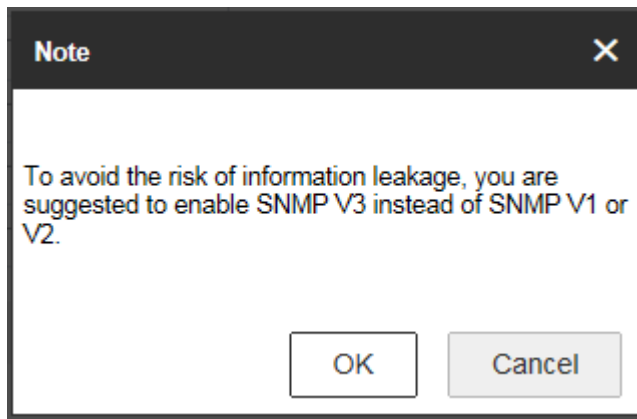
Picture Name  ▼  ✓

Upload Picture

- **The Day/Night switch by alarm strategy has been changed. As soon as the alarm is received, Day/Night switch process would start.**
- **Day/Night switch schedule is changed from 7:00~18:00 to 6:00~18:00.**
- **The minimum capture interval is changed to 1000ms.**
- **Bug solved: When input volume is set as 0, there would be no sound in live view.**
- **IP conflict would be detected within 5s.**
- **Default bitrate changed for ease of memorization:**

### 3. Security Mechanism Improvement

- **Anonymous access is banned to improve security level.**
- **In SNMP v1 and v2, a warning is added to encourage users to adopt SNMP V3, which is a safer standard to protect information.**



- SSH is forbidden to improve security.

### ***\*for 2XX0 Network Cameras (V5.4.0 build160401)***

- New models with motorized lens: DS-2CD2610F-IZ(S), DS-2CD2620F-IZ(S), DS-2CD2710F-IZ(S), DS-2CD2710F-IZ(S)
- IR illumination configurable. In smart IR manual mode, IR distance is configurable.
- Chinese OSD is no longer supported in multi-language firmware.
- Dual-VCA is banned on 2MP models to improve system stability.

### **Leftover problem:**

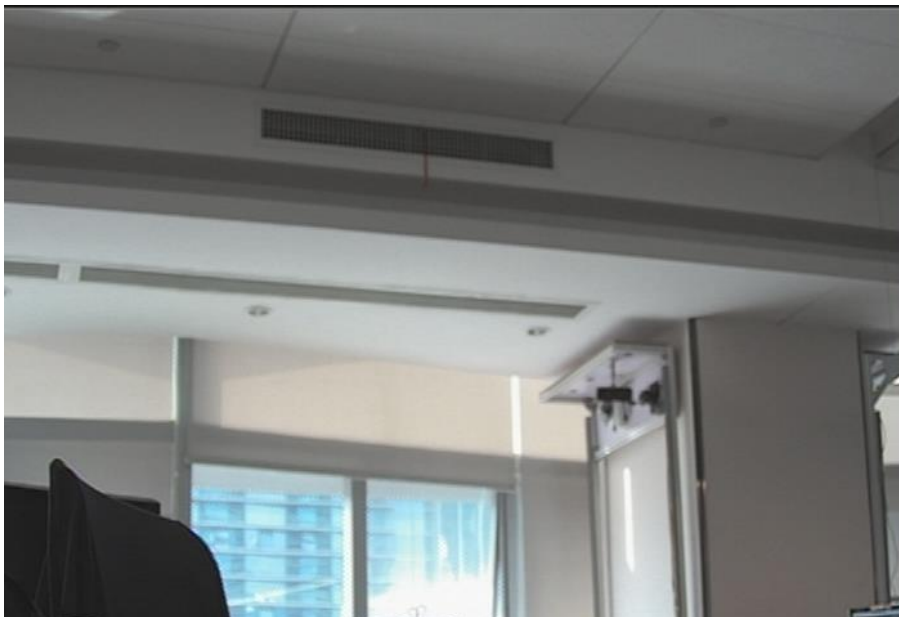
- When frame rate is set as 1fps in H.264 algorithm, occasionally the OSD time is not punctual in live view on client software. For example, the OSD is supposed to change every 1s, but occasionally OSD change interval would be 0.5s, then 1.5s. In live view on web component and in the recorded video from client software, the OSD is normal.
- When 2XX0 camera is connect to Wi-Fi for a long time, the delay is to severe that live view become impossible. The reason might be network issue or limitation of system performance.

### ***\*for 2XX2WD, 2X52 Network Cameras (V5.4.0 build160401)***

- 16 presets available for PT dome 2FX2 models.
- Expert mode in DNR is available.
- The sub stream resolution of 2X12WD and 2X52 is changed to CIF and 640\*360 to be the same with 2MP and 4MP models.
- Lens shadow correction available for 2X22FWD models

## Leftover problem:

- For 2FXX models, tilting upward may be not smoothly due to the structure of gear. Currently there is no solution to avoid the problem.
- When H.264+ is applied, operations on changing resolution, rotate, WDR and Mirror may cause the screen to turn green for a while.
- In manual white balance configuration, adjusting R parameter may lead to flash in screen.
- For 1.3MP, 4MP, 5MP models, the option of 1/100000s in shutter is actually not working. The sensors don't support 1/100000s.
- For 4MP or 5MP models in H.264+ mode and 4MP resolution, when Mirror is turned on/off and the max bit rate is greater than 6MP, the image may be abnormal for several seconds.
- For 4MP or 5MP models in H.264+ mode, when changing the sub stream resolution, or live view in both main stream and sub stream, the image may be abnormal for several seconds.
- When setting the sub stream frame rate as 25/30 fps in 5MP resolution in web browser, the frame rate would show as 20fps, while the actual frame rate is 15fps. When Capture Mode is off and sub stream frame rate is set as 25/30fps, saving would lead to error information of device error, and the frame rate would be 15fps.
- For R6 models, OSD may disappear occasionally. This problem will be solved in V5.5.0.
- Currently the image of 4MP model is clearer than 5MP model.
- In BNC output, the resolution is 704\*574. For the screens that don't support this resolution, the image would be abnormal in the right side.



## ***\*for 4XX2, 4X24F Network Cameras (V5.4.0 build160419)***

### **New Features**

- Newly added the ZF5 lens for DS-2CD4332FWD.

### **Optimizations**

- Remove the Day & Night switch sensitivity for the devices with photo resistances.

### **Leftover Problems**

- The Weekly/ Monthly /Annual Report of counting statistics in the widget are slightly inaccurate. Because the counting statistics after calibrating time will be filtered if the calibration period is more than two days.
- For DS-2CD4X12FWD, The pictures of live view will be slightly yellow when enabling WDR in the bright scene.
- It has the same brightness for DS-2CD4012F-A when the exposure times are 1/10000 and 1/100000 in the PAL.
- In the 1920\*1080@25fps, the distortion of image is more serious when enabling the lens distortion correction for DS-2CD4012F-A.
- In the 1920\*1080@30fps, it will appear a frame green screen occasionally while live view when enabling the lens distortion correction and WDR simultaneously for DS-2CD4332FWD-IZHS.
- For DS-2CD4212FWD-IZS (8-32mm), it will appear the color edge on the left and right sides of the upper part of pictures when enabling the lens distortion correction and adjusting to the T-end.
- For all R1 platform devices, it will upgrade more slowly if enable more functions simultaneously include Smart264, VCA, Face Detection, Motion Detection, Defocus Detection, Intrusion Detection, Line Crossing Detection.

## ***\*for 4X24FWD, 4X26FWD Network Cameras (V5.4.0 build160414)***

### **New Features**

- Newly added the ZF5 (2.8-12mm) lens for DS-2CD4A24FWD.
- DS-2CD4A26FWD & DS-2CD4826FWD newly support the ZF2-D (8-32mm) lens.

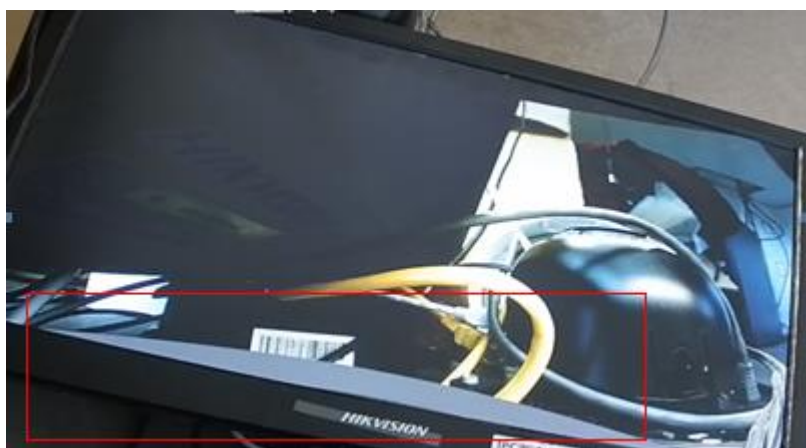
### **Optimizations**



- Remove the Day & Night switch sensitivity for the devices with photo resistances.
- IDS-2CD6124FWD/C & IDS-2CD6412FWD/C remove the function of setting the statistical cycle.

## Leftover Problems

- For DS-2CD6626B/E, the peripheral configuration function cannot control the fill-in lights. It cannot realize Day & Night Switch automatically in the Auto-Switch mode.
- It will appear the alarm of Unattended Baggage Detection or Object Removal Detection when putting an object in the drawn area.
- It needs approx. 2 minutes to search the pictures when the total number of pictures is more than 4000.
- It will appear redundant parts in the up and down for the SDI & HDMI output image when enabling distortion correction.



*\*for 4XX5 Network Cameras (V5.4.0 build160421)*

## New Features

- The default capture resolutions of DS-2CD4X85F & DS-2CD4XC5F are main stream and DS-2CD4X65 is sub stream.

## Optimizations

- Control the time in the 5s when opening/closing the WDR or switching the resolution for all R4 platform devices.
- Solve the issue that the local output cannot be closed in the previous version for all R4 platform devices..
- Solve the issue that R4 4K cameras cannot live view in the 4096\*2160 resolution with sub

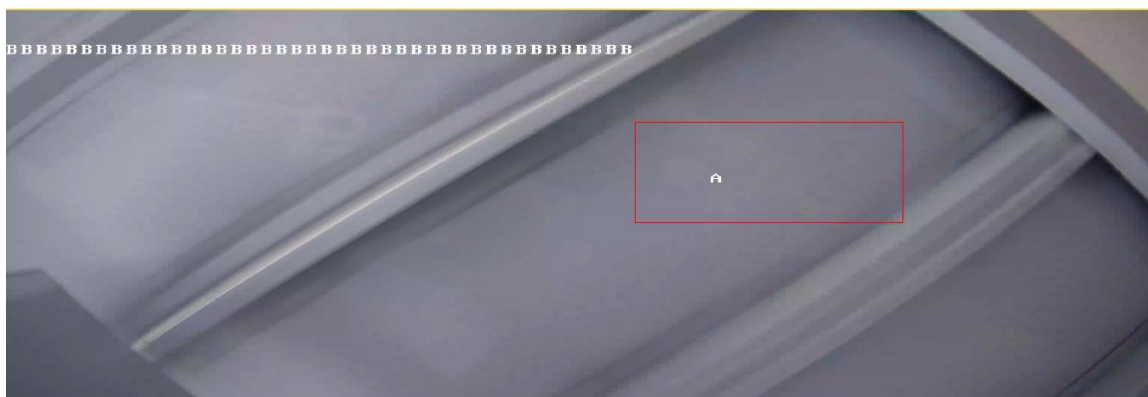
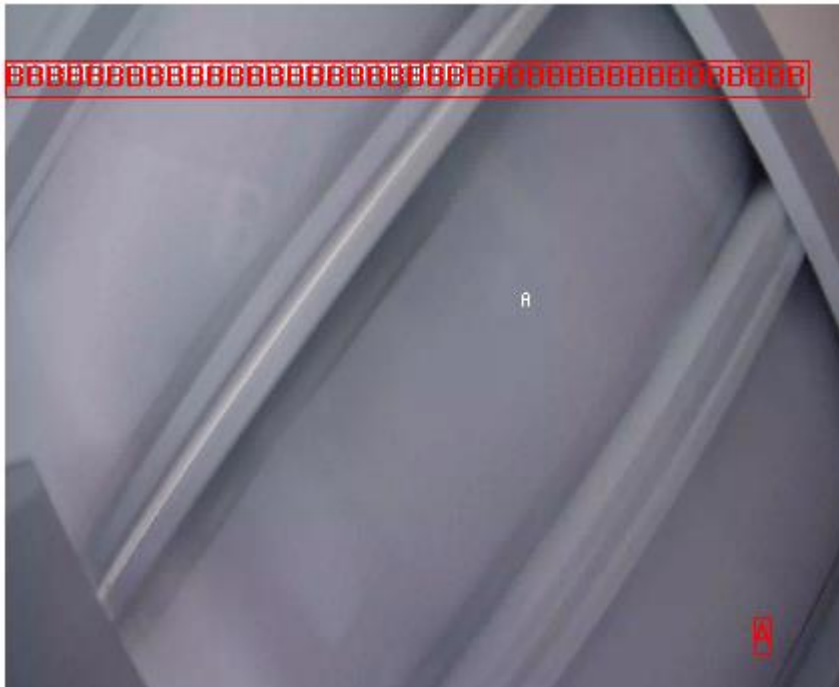
**stream when enabling the H.264+.**

- **The Max Bitrate of DS-2CD4X65 is modified from 24fps to 20fps in the 3012\*2048 resolution.**

**Solve the issue that sub stream cannot live view when enabling the FTP capture in the 3012\*2048 resolution.**

## Leftover Problems

- **For R4 6MP devices, the widget cannot access the stream when switching the resolution from 3072\*2048 to 2560\*2048. The issue can be solved by reopening the web page.**
- **For the devices with 2048\*1536 resolution or above, the bottom-right OSD will be moved to the top-left when the spacing between two lines OSD is too wide.**



- **For the R4 platform devices with 2048\*1536 resolution or above , it will not display the Enter/Leave information when enabling counting. It will turn to be normal if closing the OSD.**
- **It will appear the phenomenon of losing videos saved in the SD card for 4-24s when the**

**Bitrate Type is constant and Max. Bitrate is 8M.**

- **For DS-2CD4x85, DS-2CD4xC5, if the exposure time is set to 1s, it will appear the phenomenon of living view failed with sub-stream or third-stream occasionally when the resolution of main stream is 3840\*2160 or 4096\*2160.**
- **For DS-2CD4A85F-IZHS with the resolution of 3840\*2160, the noise will be obvious in the scene with lights.**
- **For the devices with WDR, it will appear no stream phenomenon when enabling HLC, Slow shutter and High frame simultaneously. The HLC function will be invalid if set up the high frame.**
- **For DS-2CD4x65 in NTSC with resolution of 3072\*1728, the sub stream will live view unsuccessfully with 4CIF, 20fps. The issue can be solved by decreasing the frame of sub stream to 4fps.**

***\*for 4-line Lite Series/DS-2CD4A24FWD (4.7~94mm) Network Cameras***

- **Support 16Mbps maximum bit rate.**
- **The information for H.264+ is improved for better understanding.**

## Compatibility Update

- **HIKCGI version: V2.0;**
- **ISAPI version: V2.4;**
- **PSIA version: V1.1, official test version: V2.0.2;**
- **ONVIF version: V2.4, official test tool version: V14.06;**
- **NUUO:**
  1. Version: V6.2.0.6, drive version: V4.10;
  2. Protocol: HIKCGI
- **Milestone:**
  1. Milestone Enterprise 8.1a(10.0a), Milestone drive version (Driver 8.3), test HIKCGI
  2. Milestone software version (Milestone Corporate 10.0a), Milestone drive version (Driver 8.3), test HIKCGI
- **Avigilon:**
  1. Control Center: V5.6.2.18;
  2. Test ONVIF.

- **Excaqvision:**
  1. Version: 7.2.3
  2. Protocol: HIKCGI, ONVIF
- **NAS(Only test for Brainaire):**

DS-A2016R, DS-A1016RS V2.2.0-7

## Customer Impact and Recommended Action

This update refers to function/compatibility improvement and will take effect automatically after the Date of Change. We are very sorry for any inconvenience of use-habit changes caused by this action. For any questions and request for this firmware, please contact our local technical support team.

### **Remarks:**

- Hikvision reserves the right to change, alter or withdraw the above notification without prior notice.
- Product design and specifications are subject to change without prior notice.
- The Hikvision firmware may contain defects or errors known as errata which may cause the product to deviate from published specifications. Current characterized errata are available on request.
- Hikvision is not liable for any typing or printing errors.

Hikvision Digital Technology CO., Ltd.  
No. 555 Qianmo Road, Binjiang District, Hangzhou 310051, China  
Tel: +86-571-8807-5998  
FAX: +86-571-8993-5635  
Email: [overseabusiness@hikvision.com](mailto:overseabusiness@hikvision.com)

## Supported Product List (2XX2)

| Product Category | Model Number           | Product Description                      |
|------------------|------------------------|--|
| Mini IR Bullet   | DS-2CD2022WD-I         | 2MP, IR, WDR                             |
| Mini IR Bullet   | DS-2CD2042WD-I         | 4MP, IR, WDR                             |
| Mini IR Bullet   | DS-2CD2052-I           | 5MP, IR                                  |
| IR Fixed Dome    | DS-2CD2122FWD-I(W)(S)  | 2MP, IR, Wi-Fi, WDR                      |
| IR Fixed Dome    | DS-2CD2142FWD-I(W)(S)  | 4MP, IR, Wi-Fi, WDR                      |
| IR Fixed Dome    | DS-2CD2152F-I(W)(S)    | 5MP, IR, Wi-Fi                           |
| EXIR Turret      | DS-2CD2322WD-I         | 2MP, IR, WDR                             |
| EXIR Turret      | DS-2CD2342WD-I         | 4MP, IR, WDR                             |
| EXIR Turret      | DS-2CD2352(D)-I        | 5MP, IR                                  |
| IR Mini Dome     | DS-2CD2522FWD-I(W)(S)  | 2MP, IR, WDR, Wi-Fi/Audio/Alarm optional |
| IR Mini Dome     | DS-2CD2542FWD-I(W)     | 4MP, IR, WDR, Wi-Fi optional             |
| IR Mini Dome     | DS-2CD2552FWD-I(W)     | 5MP, IR, Wi-Fi optional                  |
| VF IR Bullet     | DS-2CD2622FWD-I(Z)(S)  | 2MP, VF lens, IR, Audio/Alarm optional   |
| VF IR Bullet     | DS-2CD2642FWD-I(Z)(S)  | 4MP, VF lens, IR, Audio/Alarm optional   |
| VF IR Bullet     | DS-2CD2652F(D)-I(Z)(S) | 5MP, VF lens, IR, Audio/Alarm optional   |
| VF IR Dome       | DS-2CD2722FWD-I(Z)(S)  | 2MP, VF lens, IR, Audio/Alarm optional   |
| VF IR Dome       | DS-2CD2742FWD-I(Z)(S)  | 4MP, VF lens, IR, Audio/Alarm optional   |
| VF IR Dome       | DS-2CD2752F-I(Z)(S)    | 5MP, VF lens, IR, Audio/Alarm optional   |
| EXIR Bullet      | DS-2CD2T22WD-I3/I5/I8  | 2MP, IR, WDR                             |
| EXIR Bullet      | DS-2CD2T42WD-I3/I5/I8  | 4MP, IR, WDR                             |
| EXIR Bullet      | DS-2CD2T52-I3/I5/I8    | 5MP, IR                                  |
| PT Dome          | DS-2CD2F12FWD-I(W)(S)Z | 1.3MP, IR, WDR, PT, VF lens              |

|         |                       |   |
|---------|-----------------------|---|
| PT Dome | DS-2CD2F22FWD-I(W)(S) | 2MP, IR, WDR, PT, WiFi/Audio/Alarm optional |
| PT Dome | DS-2CD2F42FWD-I(W)(S) | 4MP, IR, WDR, PT, WiFi/Audio/Alarm optional |
| PT Dome | DS-2CD2F52F-I(W)(S)   | 5MP, IR, PT, WiFi/Audio/Alarm optional      |

## Supported Product List (XXX0)

| Product Category | Model Number        | Product Description                      |
|------------------|---------------------|--|
| Mini IR Bullet   | DS-2CD2010-I        | 1.3MP, IR                                |
| Mini IR Bullet   | DS-2CD2010F-I(W)    | 1.3MP, IR, Wi-Fi                         |
| Mini IR Bullet   | DS-2CD2020-I        | 2MP, IR                                  |
| Mini IR Bullet   | DS-2CD2020F-I(W)    | 2MP, IR, Wi-Fi                           |
| IR Fixed Dome    | DS-2CD2110F-I(W)(S) | 1.3MP, IR                                |
| IR Fixed Dome    | DS-2CD2120F-I(W)(S) | 2MP, IR                                  |
| IR Cube          | DS-2CD2410F-I(W)    | 1MP, IR, Wi-Fi optional                  |
| IR Cube          | DS-2CD2420F-I(W)    | 2MP, IR, Wi-Fi optional                  |
| Mini Dome        | DS-2CD2510F         | 1.3MP                                    |
| Mini Dome        | DS-2CD2520F         | 2MP                                      |
| VF IR Bullet     | DS-2CD2610F-I(Z)(S) | 1.3MP, VF lens, IR, Audio/Alarm optional |
| VF IR Bullet     | DS-2CD2620F-I(Z)(S) | 2MP, VF lens, IR, Audio/Alarm optional   |
| VF IR Dome       | DS-2CD2710F-I(Z)(S) | 1.3MP, VF lens, IR, Audio/Alarm optional |
| VF IR Dome       | DS-2CD2720F-I(Z)(S) | 2MP, VF lens, IR, Audio/Alarm optional   |
| Box Camera       | DS-2CD2810F         | 1.3MP, box camera                        |
| Box Camera       | DS-2CD2820F         | 2MP, box camera                          |
| EXIR Bullet      | DS-2CD2T10-I3/I5/I8 | 1.3MP, EXIR Bullet                       |
| EXIR Bullet      | DS-2CD2T20-I3/I5/I8 | 2MP, EXIR Bullet                         |
| IR Mini PT       | DS-2CD2Q10FD-IW     | 1MP, Wi-Fi                               |
| Pinhole          | DS-2CD2D14WD        | 1MP                                      |
| Alarm Cube       | DS-2CD2C10F-IW      | 1MP, Wi-Fi                               |
| IR Dome          | DS-2CD6510-I(O)     | 1.3MP, IR, Audio/Alarm optional          |

## Supported Product List (4XX2, 4XX4)

| Product Category | Model Number             | Product Description                                     |
|------------------|--------------------------|---|
| Box Camera       | DS-2CD4012F-(A)(P)       | 1.3MP, 60fps, ABF optional, Wi-Fi optional              |
| Box Camera       | DS-2CD4012FWD-(A)(P)     | 1.3MP, WDR, ABF optional, Wi-Fi optional                |
| Box Camera       | DS-2CD4024F-(A)(P)       | 2MP, ABF optional, Wi-Fi optional                       |
| Box Camera       | DS-2CD4032FWD-(A)(P)     | 3MP, WDR, ABF optional, Wi-Fi optional                  |
| IR Indoor Dome   | DS-2CD4112F-I(Z)         | 1.3MP, 60fps, Motorized VF lens optional                |
| IR Indoor Dome   | DS-2CD4112FWD-I(Z)       | 1.3MP, WDR, Motorized VF lens optional                  |
| IR Indoor Dome   | DS-2CD4124F-I(Z)         | 1.3MP, Motorized VF lens optional                       |
| IR Indoor Dome   | DS-2CD4132FWD-I(Z)       | 1.3MP, WDR, Motorized VF lens optional                  |
| IR Bullet        | DS-2CD4212F-I(Z)(S)(H)   | 1.3MP, Motorized VF lens optional, Heater optional      |
| IR Bullet        | DS-2CD4212FWD-I(Z)(S)(H) | 1.3MP, WDR, Motorized VF lens optional, Heater optional |
| IR Bullet        | DS-2CD4224F-I(Z)(S)(H)   | 2MP, Motorized VF lens optional, Heater optional        |
| IR Bullet        | DS-2CD4232FWD-I(Z)(S)(H) | 3MP, WDR, Motorized VF lens optional, Heater optional   |
| IR Outdoor Dome  | DS-2CD4312F-I(Z)(S)(H)   | 1.3MP, Motorized VF lens optional, Heater optional      |
| IR Outdoor Dome  | DS-2CD4312FWD-I(Z)(S)(H) | 1.3MP, WDR, Motorized VF lens optional, Heater optional |
| PTZ Outdoor Dome | DS-2CD4312F-PTZ          | 1.3MP, PTZ outdoor dome                                 |
| IR Outdoor Dome  | DS-2CD4324F-I(Z)(S)(H)   | 2MP, Motorized VF lens optional, Heater optional        |
| PTZ Outdoor Dome | DS-2CD4324F-PTZ          | 2MP, PTZ outdoor dome                                   |
| IR Outdoor Dome  | DS-2CD4332FWD-I(Z)(S)(H) | 3MP, WDR, Motorized VF lens optional, Heater optional   |
| PTZ Outdoor Dome | DS-2CD4332FWD-PTZ        | 3MP, PTZ outdoor dome                                   |
| Covert Camera    | DS-2CD6412FWD            | 1.3MP, WDR  |

## Supported Product List (XX26, XX24FWD)

| Product Category   | Model Number                | Product Description                   |
|--------------------|-----------------------------|---------------------------------------|
| Box Camera         | DS-2CD4026FWD-(A)(P)        | Darkfighter, 120dB                    |
| Indoor Dome        | DS-2CD4126FWD-IZ            | Darkfighter, 120dB                    |
| Outdoor Dome       | DS-2CD4526FWD-IZ(H)         | Darkfighter, 120dB                    |
| Outdoor Bullet     | DS-2CD4626FWD-IZ(H)         | Darkfighter, 120dB                    |
| Outdoor Bullet     | DS-2CD4A26FWD-IZ(H)(S)      | Darkfighter, 120dB                    |
| Box Camera         | DS-2CD6026FHWD-(A)(P)       | 2MP, 60fps, Darkfighter, ABF optional |
| Intelligent Camera | iDS-2CD6024FWD/(B/F)        | 2MP, Intelligent                      |
| Intelligent Camera | iDS-2CD6124FWD-IZ/(H/C/B/F) | 2MP, Intelligent                      |
| Outdoor Bullet     | DS-2CD6226FWD-IZ(H)(S)      | Darkfighter, 2MP                      |
| Intelligent Camera | iDS-2CD6412FWD/C            | People Counting                       |

## Supported Product List (4XX5)

| Product Category | Model Number         | Product Description    |
|------------------|----------------------|------------------------|
| Box Camera       | DS-2CD4025FWD-(A)(P) | Lightfighter, 2MP, WDR |
| Box Camera       | DS-2CD4035F-(A)(P)   | 3MP                    |
| Box Camera       | DS-2CD4035FWD-(A)(P) | 3MP, WDR               |
| Box Camera       | DS-2CD4065F-(A)(P)   | 6MP                    |
| Box Camera       | DS-2CD4085F-(A)(P)   | 8MP                    |
| Box Camera       | DS-2CD40C5F-(A)(P)   | 12MP                   |
| Indoor Dome      | DS-2CD4125FWD-IZ     | Lightfighter, 2MP, WDR |
| Indoor Dome      | DS-2CD4135F-IZ       | 3MP                    |
| Indoor Dome      | DS-2CD4135FWD-IZ     | 3MP, WDR               |
| Indoor Dome      | DS-2CD4165F-IZ       | 6MP                    |
| Indoor Dome      | DS-2CD4185F-IZ       | 8MP                    |
| Indoor Dome      | DS-2CD41C5F-IZ       | 12MP                   |
| Outdoor Dome     | DS-2CD4525FWD-IZ(H)  | Lightfighter, 2MP, WDR |
| Outdoor Dome     | DS-2CD4535F-IZ(H)    | 3MP                    |



|                |                        |                        |
|----------------|------------------------|------------------------|
| Outdoor Dome   | DS-2CD4535FWD-IZ(H)    | 3MP, WDR               |
| Outdoor Dome   | DS-2CD4565F-IZ(H)      | 6MP                    |
| Outdoor Dome   | DS-2CD4585F-IZ(H)      | 8MP                    |
| Outdoor Dome   | DS-2CD45C5F-IZ(H)      | 12MP                   |
| Outdoor Bullet | DS-2CD4625FWD-IZ(H)(S) | Lightfighter, 2MP, WDR |
| Outdoor Bullet | DS-2CD4635F-IZ(H)(S)   | 3MP                    |
| Outdoor Bullet | DS-2CD4635FWD-IZ(H)(S) | 3MP, WDR               |
| Outdoor Bullet | DS-2CD4665F-IZ(H)(S)   | 6MP                    |
| Outdoor Bullet | DS-2CD4685F-IZ(H)(S)   | 8MP                    |
| Outdoor Bullet | DS-2CD46C5F-IZ(H)(S)   | 12MP                   |
| IR Bullet      | DS-2CD4A25FWD-IZ(S)    | Lightfighter, 2MP, WDR |
| IR Bullet      | DS-2CD4A35F-IZ(S)      | 3MP                    |
| IR Bullet      | DS-2CD4A35FWD-IZ(S)    | 3MP, WDR               |
| IR Bullet      | DS-2CD4A65F-IZ(S)      | 6MP                    |
| IR Bullet      | DS-2CD4A85F-IZ(S)      | 8MP                    |
| IR Bullet      | DS-2CD4AC5F-IZ(S)      | 12MP                   |

| <b>Supported Product List (4-line Lite Series, 20x model)</b> |                           |                                  |
|---|---------------------------|----------------------------------|
| <b>Product Category</b>                                       | <b>Model Number</b>       | <b>Product Description</b>       |
| Outdoor Bullet  | DS-2CD4A26EFWD-IZ(H)(S)   | Lite Series, 2MP, VF, WDR        |
| Box Camera  | DS-2CD4026EFWD            | Lite Series, 2MP, VF, WDR        |
| Indoor Dome   | DS-2CD4126EFWD-IZ(H)(S)   | Lite Series, 2MP, VF, WDR        |
| Outdoor Bullet  | DS-2CD4B16FWD-IZ(S)       | Darkfighter Lite, 1.3MP, VF lens |
| Outdoor Bullet  | DS-2CD4B26FWD-IZ(S)       | Darkfighter Lite, 2MP, VF lens   |
| Outdoor Dome  | DS-2CD4D16FWD-IZ(S)       | Darkfighter Lite, 1.3MP, VF lens |
| Outdoor Dome  | DS-2CD4D26FWD-IZ(S)       | Darkfighter Lite, 2MP, VF lens   |
| Outdoor Bullet  | DS-2CD4A24FWD-IZ(H)(S)(B) | 20x lens, 2MP, heater            |