

How to register MVR to iVMS-5200 via DDNS

Note:

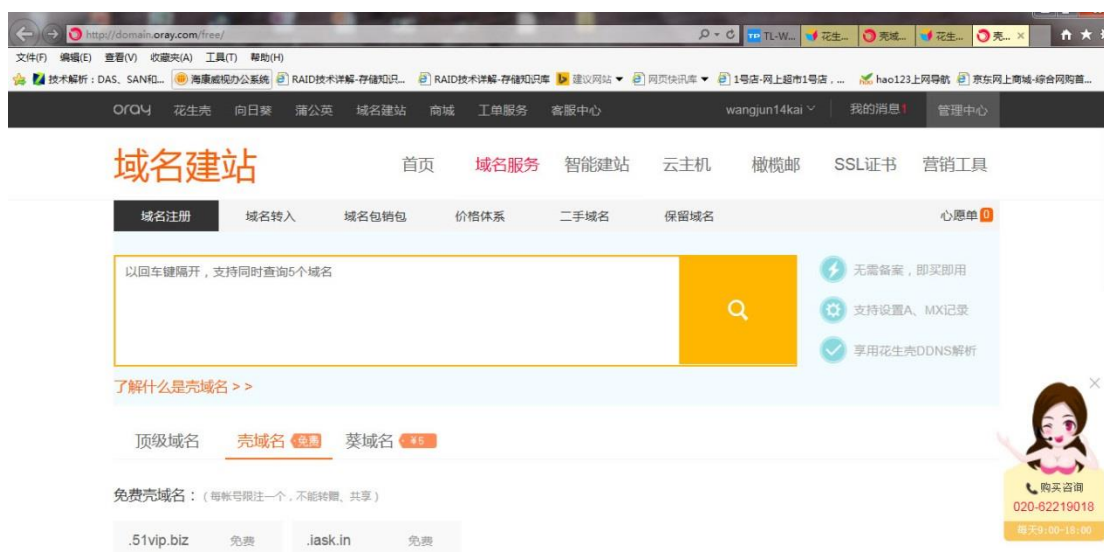
Why do customers need DDNS register function of iVMS-5200 in mobile surveillance solution?

1. In mobile surveillance solution, the iVMS-5200 server should be deployed in the extranet, the simplest way for customer is to rent an stationary extranet IP, but sometimes the fee is too high to bear;
2. The “Dial-up Internet access” is very cheap compared with stationary extranet IP, but customer cannot use the network directly, for the IP assigned on a router is always changing when the router is restarted; The DDNS register function of iVMS-5200 is designed to solve the problem;
3. The firmware of iVMS-5200 should be V3.3.2, and for MVR the version should be V4.0 or update;



DDNS Register Function Configuration

1. Chose a router which supports DDNS function, register an account on the web service of DDNS supplier and then apply a **Domain Name**; (Oray in this case);



Apply Domain Name

2. Configure the dial-up in router, make sure that the router can connect to the internet;



3. login on the router with your DDNS account;



DDNS Login on a Router

4. Then map the following ports of iVMS-5200 in the router;

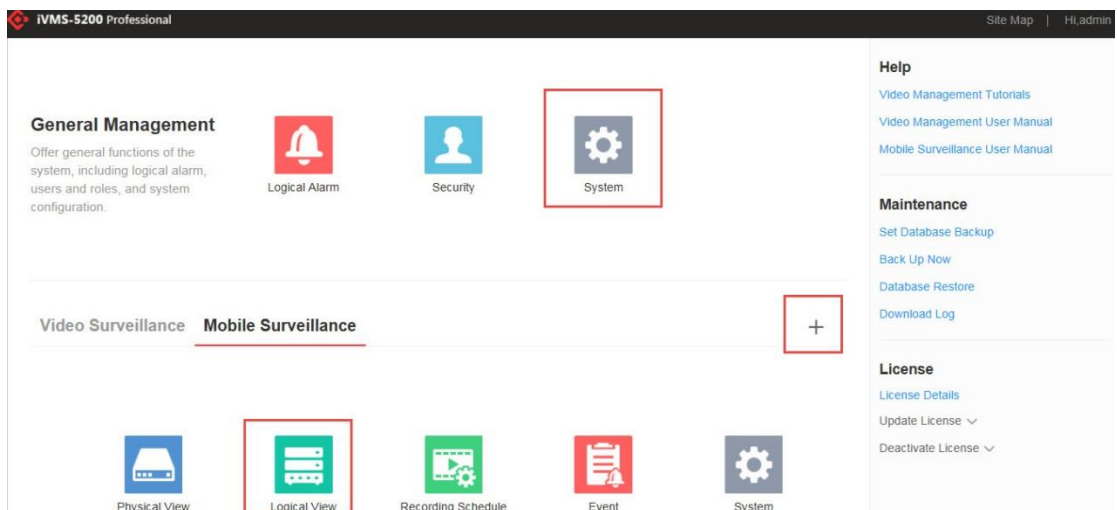
Module	Port
MSM	80,123
MNMS	15499,15498
MES	15400,15401
MVRM	9300
MVAG	7600,9602
SMS	554,10000,50000-54000,32000-33000

Ports Mapping List

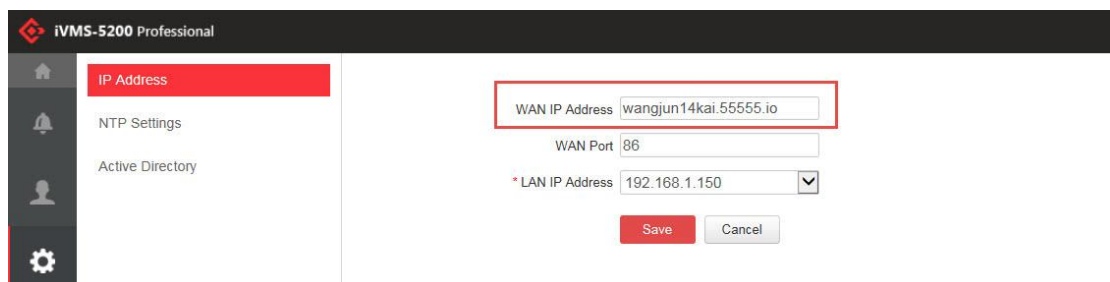


Ports Mapping in the Router

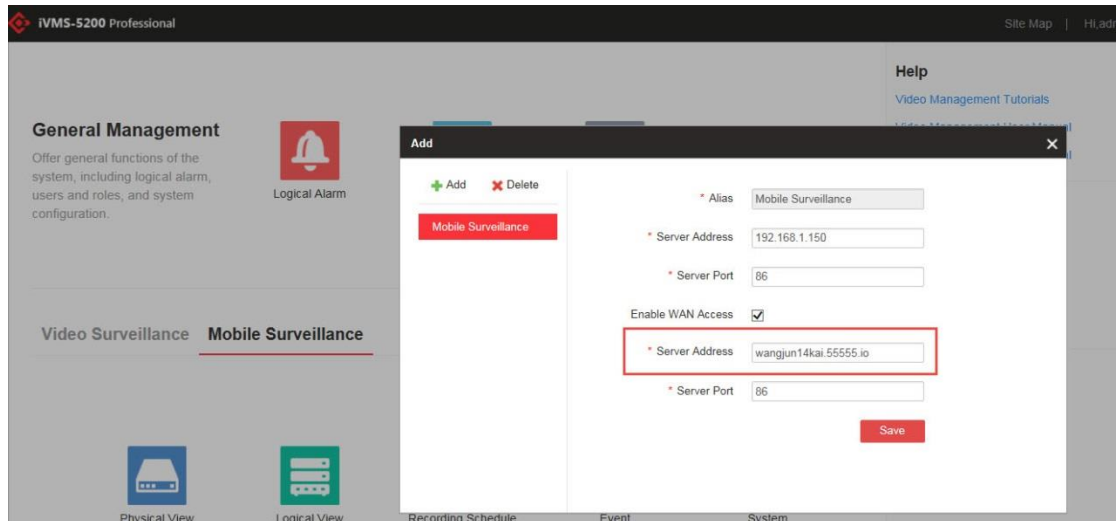
- DDNS configuration on the web manager of iVMS-5200;
 - Login the web manager of iVMS-5200, three WLAN specification should be modified to be DDNS, marked with the red segments;



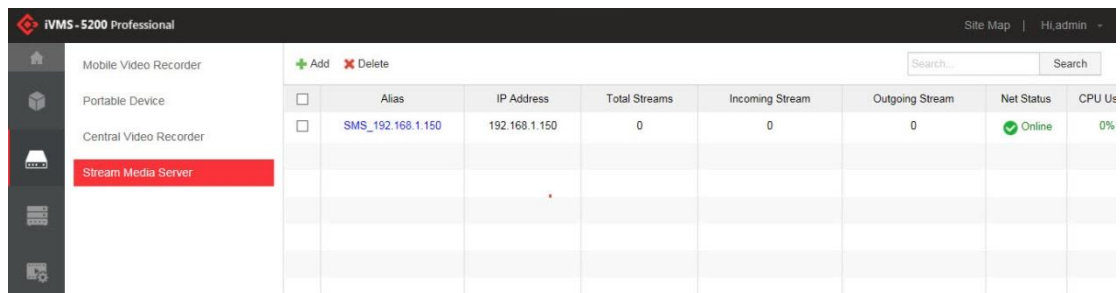
- Modify the WLAN of **General Management** → **System**



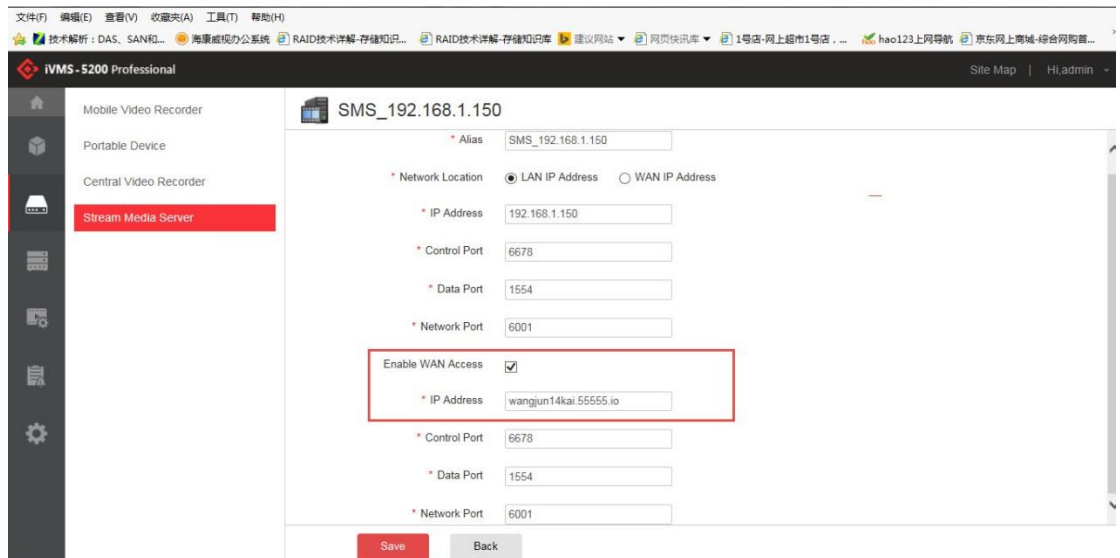
- Modify the WLAN parameter of **Mobile Surveillance** sub-system;



- Modify the WLAN parameter of SMS of Mobile Surveillance sub-system;



SMS of Mobile Surveillance Sub-system



6. Plug in the SIM card of MVR and enable Dialing, make sure that the MVR can connect to the internet successfully;

The screenshot shows the 'Configuration' tab of the HIKVISION interface. The left sidebar contains menu items: Local, System, Network, Basic Settings (highlighted), Advanced Settings, Video/Audio, Image, Event, Storage, and Vehicle. The main content area is titled 'TCP/IP Port 3G/4G'. It features a checked 'Enable' checkbox and two tabs: 'Wireless Dial-up Status' (active) and 'Dial Parameters'. Below the tabs is a table with the following data:

Real-time Mode	WCDMA
USIM Card Status	Valid
Signal Strength	ordinary
Wireless Dial-up Status	Dial Success
IP Address	10.94.20.141
Subnet Mask	255.255.255.255
Gateway	10.64.64.64
DNS Address	221.12.1.227

Below the table is a 'Refresh' button and a red 'Save' button at the bottom.

7. Register the MVR to iVMS-5200, the **Server Address Type** should be **Hostname** ;

The screenshot shows the 'Configuration' tab of the HIKVISION interface. The left sidebar contains menu items: Local, System, Network, Basic Settings, Advanced Settings (highlighted), Video/Audio, Image, Event, Storage, and Vehicle. The main content area is titled 'Platform Access' with sub-tabs: HTTPS, Wi-Fi, and Wi-Fi AP. It features a checked 'Enable' checkbox and several fields:

- Platform Access Mode: Ehome (dropdown)
- Server Address Type: Hostname (dropdown, highlighted with a red box)
- Server Address: wangjun14kai.55555.io (text input, highlighted with a red box)
- Server Port: 7661 (text input)
- Device ID: 5504hmi (text input)
- Register Status: Online

A red 'Save' button is located at the bottom.

First Choice for Security Professionals

HIKVISION Technical Support