

# AX PRO

## Version: V1.2.5

### Release Note

### (2021-10-15)

## 1. Firmware Basic Information

<b>Firmware Basic Information</b>	Firmware Version	V1.2.5_build210930
	Device Type	DS-PWA64-L-WE/WB DS-PWA96-M-WE/WB

### Notes:

1. Please update firmware to the latest version to ensure the perfect user experience.
2. For installers, it is recommended to install and maintain devices via Hik-ProConnect.

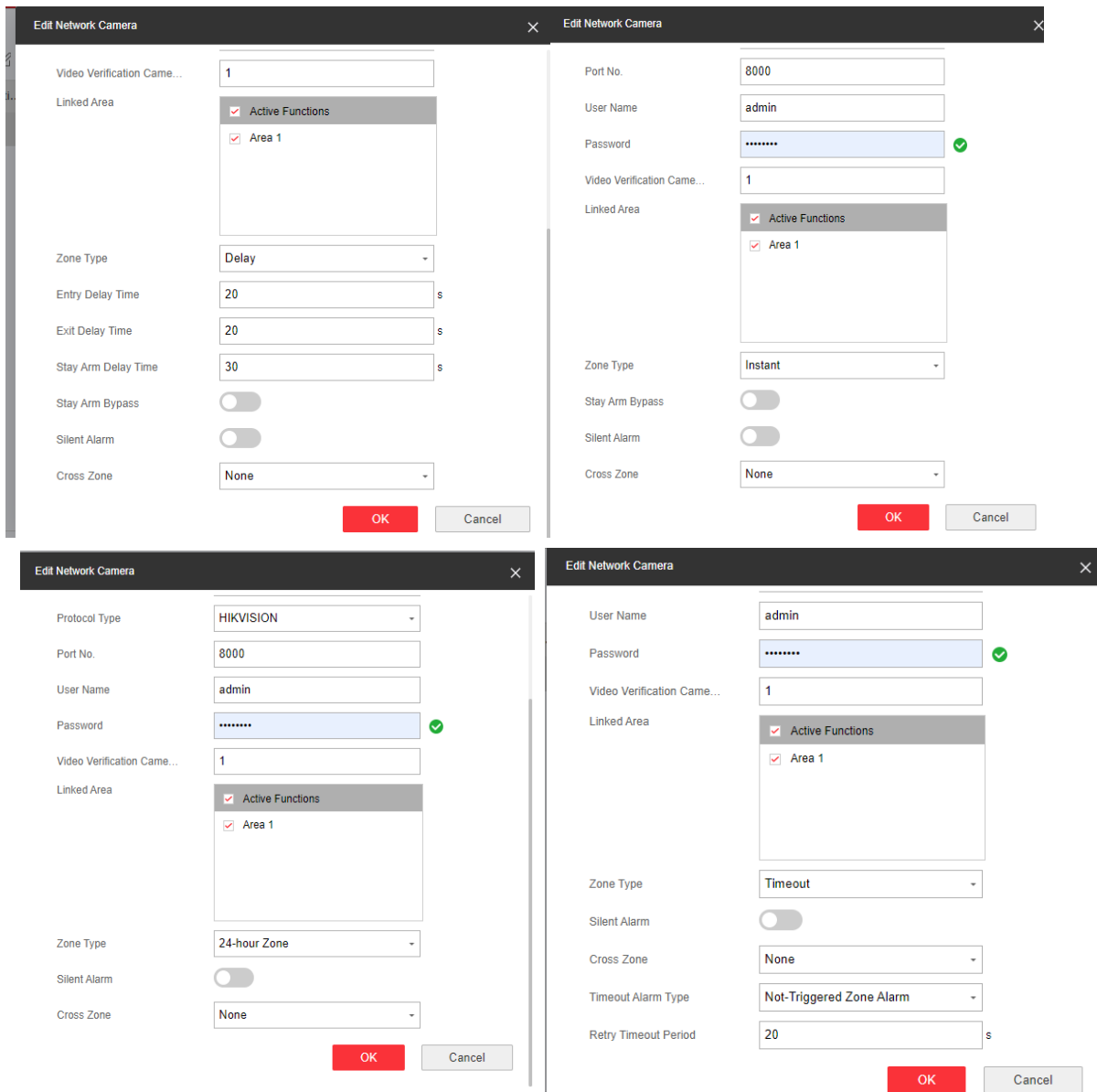
## 2. V1.2.5 Upgrade Note

### 2.1 Added Function:

#### 1) Support to configure the IPC as a zone

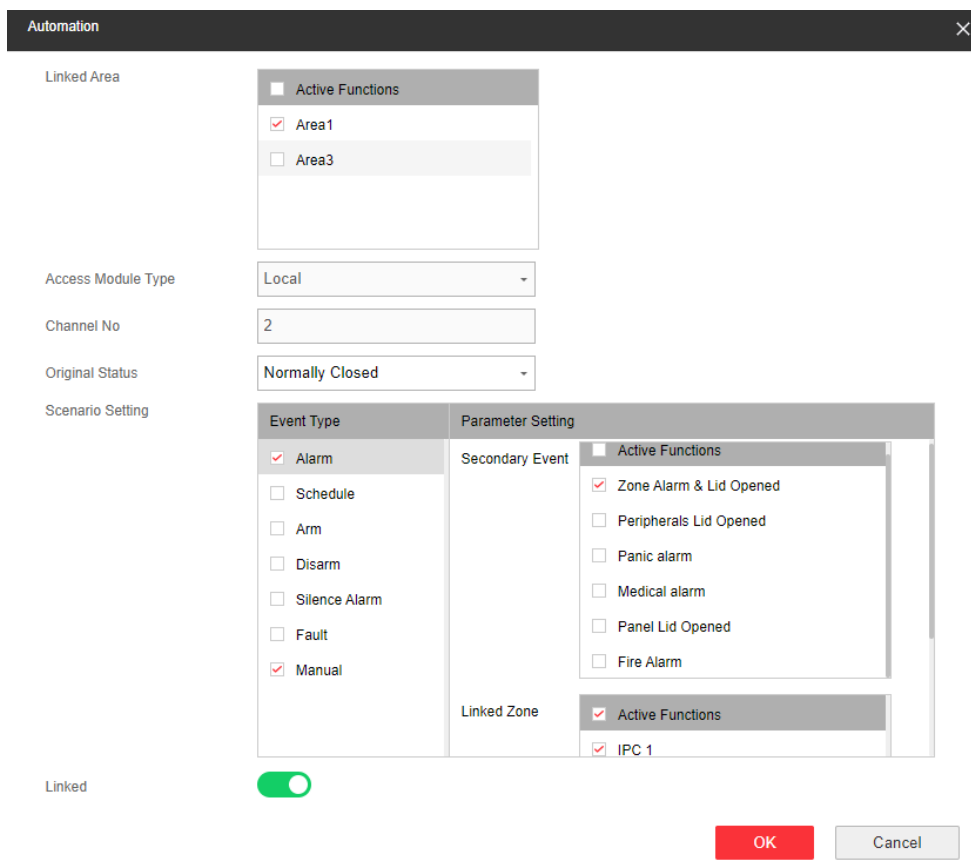
(a) The name of the IPC supports customization, alarm notification supports displaying custom name.

(b) IPC configuration interface adds the following configuration items: **a.** name, **b.** linked area, **c.** arm mode (when linked multiple areas), **d.** zone type(instant/delayed/24-hour zone/timeout), **e.** stay arm bypass, **f.** silent alarm, **g.** cross zone.



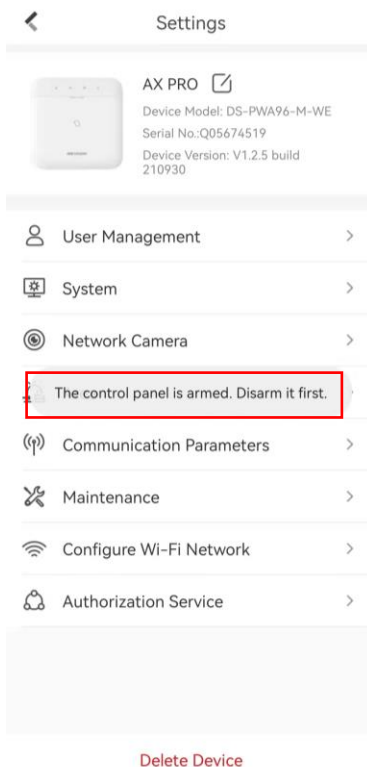
(c) Alarm panel supports arm/disarm the IPC through the linked area, IPC doesn't link its own sound and light alarm when the system disarmed.

(d) Add IPC alarm events to relay linkage events.



**2) Cloud users are prohibited from deleting the panel when the system is armed**

Ps. Support from Hikconnect Version: 4.19.



### 3) Add key fob status interface

Add a keyfob status interface to the device status page of the web interface, it displays device number, name, battery status and the version information.

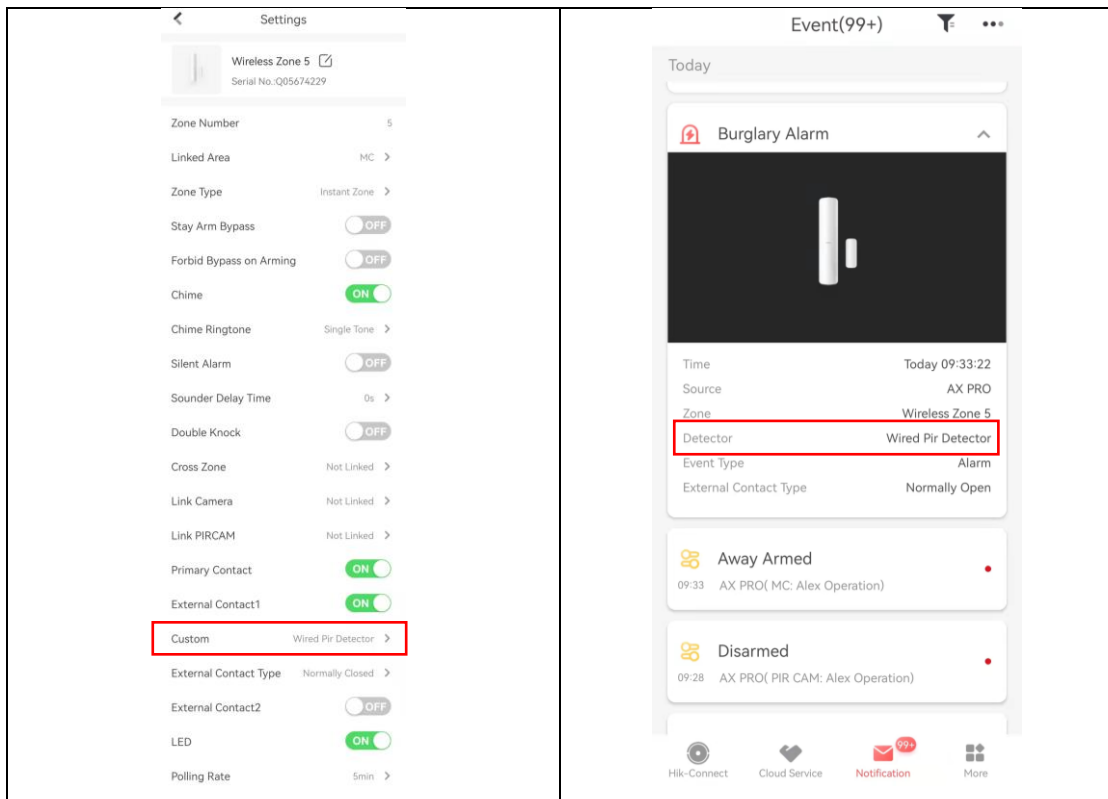
Keyfob	Device Number	Name	Battery Status	Version No.
1	3	Keyfob 1	OK	V1.0.2

### 4) Add New multiple language

Support more multiple languages: **Bulgarian**.

### 5) The name of the External Input supports customization

The name of the External Input that supports the External Input type detector supports customization



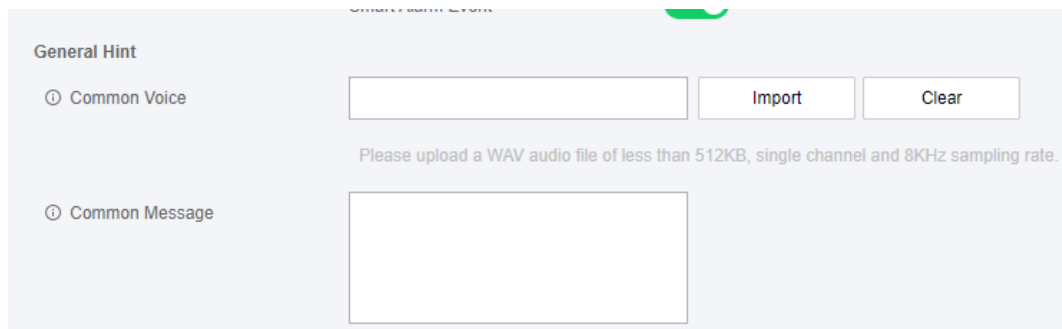
### 6) Support import Common Voice and Common Message

Common Voice(only support web configuration, path: communication – event types notification – phone call and SMS):

- a. Panel supports import or clear the common voice. When the user receives an alarm call, the voice broadcast sequence is Common Voice + the original alarm broadcast voice.
- b. The Common Voice import box is added to the alarm phone configuration interface on the APP and web interface.

Common Message:

- a. Panel supports import or clear the common message. When the user receives an alarm message, The SMS editing form is Common Message+ enter+ original message.
- b. The Common Message import box is added to the alarm SMS configuration interface on the APP and web interface.



### 7) Added device number for peripheral devices

All types of peripheral devices supported by the panel will be assigned a unique device number when registering. Device number range is 1-1000. When the panel uploads alarm information to ARC and Ezviz, the device number information will be attached (The alarm information received by Hik-connect doesn't display the device number).

Device	Zone	Device No.	Name
Zone	1	3	Wired Zone 1
Sounder	2	4	Wired Zone 2
Keypad			

The screenshot shows the 'Network Camera Management' interface with a sub-tab for 'Video Parameters'. At the top, there are buttons for '+ Enroll', 'Edit', and 'Delete'. Below these is a table with the following columns: 'Video Verificati...', 'Device No.', 'Network Came...', 'Video Verificati...', and 'Network C'. A single row is visible with the following values: a checkbox, '1', '5', '10.22.97.29', '1', and '8000'.

Video Verificati...	Device No.	Network Came...	Video Verificati...	Network C
<input type="checkbox"/>	1	5	10.22.97.29	1 8000

**8) Added Mains Power status to the sounder status interface**

When the sounder main power supply is disconnected or connected, upload the voltage status and record the log, APP automatically refreshes the power status of the sounder. (note: This function involves hardware update, not all sounder support this function.)

The screenshot shows the 'Sounder Status' interface. A table lists sounder devices with columns: 'SounderDevice Nu...', 'Name', 'Temperatur...', 'Battery Status Signal Stren...', 'Status', 'Mains Power', and 'Version No.'. The 'Mains Power' column is highlighted with a red box. A 'Refresh' button is located above the table.

SounderDevice Nu...	Name	Temperatur...	Battery Status Signal Stren...	Status	Mains Power	Version No.

**9) Added IPRP (IP Receiver Pro) offline notification**

When ARC is configured for single-channel or dual-channel ISUP reporting, if ISUP is offline, the ARC connection failure message will be reported to Hik-Connect and Hik-Pro connect. (Report directly to the message, don't have CID code)

**10) Push a message when the panel's battery is about to run out**

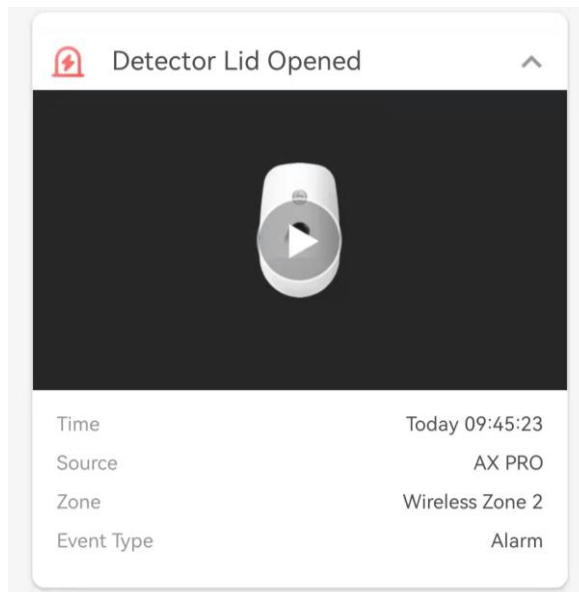
**11) Added Linked camera to the list of zones interface**

If the zone linked camera, the "linked camera" will display the IPC name;

If the zone not linked camera, the "linked camera" will display the "/";

Zone	Device No.	Name	Device Types	Silent Alarm	Chime	Linked Camera
1	3	Wired Zone 1	Instant	Disable	Disable	/
2	4	Wired Zone 2	Delay	Disable	Disable	IPC 1

**12) Support to capture pictures when PIRCAM tamper is triggered**



### **13)ISUP dual channel mechanism adjustment**

Adjustment of the ISUP protocol backup mechanism:

(1)When the panel is configured with two ISUP channels and one of the channels is the backup channel, only the main ISUP channel is successfully registered on ARC and can upload an alarm. When the main ISUP channel is abnormal, the main ISUP channel is disconnected. The channel is switched to the backup channel, register on ARC and upload the alarm. In this mode, the Account ID can be the same.

(2) The two protocols of the ARC center choose the ISUP protocol, this means that both channels of ISUP are the main channels. Both channels will be registered to the ARC and both can upload an alarm normally. At this time, the Account ID cannot be the same.

### **14)Support to upgrade Key fob firmware**

Users can upgrade the key fob latest firmware through the web interface.

## **2. Feature Optimization:**

### **1) Switch language upgrade Optimization**

When the panel switches languages upgrades, the APP adds a pop-up window prompting Reset Device/Area Name. After the user confirms the upgrade, the panel chooses whether to restore the default parameters of the Device/Area name according to the result.

## 2) Tag reader operation Optimization

Tag reader supports select of “operation mode”

Standard Mode: The operation process is the same as the operation on the current user manual;

Simple Mode: Swipe the card once, all the areas linked with the card reader are armed, and once again, all the areas linked with the card reader are disarmed;

Name	<input type="text" value="Tag Reader 1"/>
Serial No.	<input type="text" value="Q03045279"/>
Tag Reader	<input type="text" value="1"/>
Linked Area	<div style="border: 1px solid #ccc; padding: 5px;"><input checked="" type="checkbox"/> Active Functions <input checked="" type="checkbox"/> Area 1</div>
Operation Mode	<input type="radio"/> Standard Mode ⓘ <input checked="" type="radio"/> Simple Mode ⓘ

## 3) System Fault Check Function Optimization

Panel Fault Check is changed to System Fault Check; Mains Power Lost is added to System Fault Check, and AC Power Loss Delay is displayed when Mains Power Lost is turned on; the Fault option in Arm Options is as follows, and the red option is added: (a) Device Lid Opened (b). Zone/Peripherals Poll Failure/Offline (c) Zone/Peripherals Low Battery (d) Zone Triggered(e) Detect Network Camera Disconnection (f) Panel Battery Fault Check (g) LAN Fault Check(h) WiFi Fault Check(i) Cellular Fault Check(j) Mains Power Lost



Management   Schedule & Timer   **System Fault Check**   Arm Options

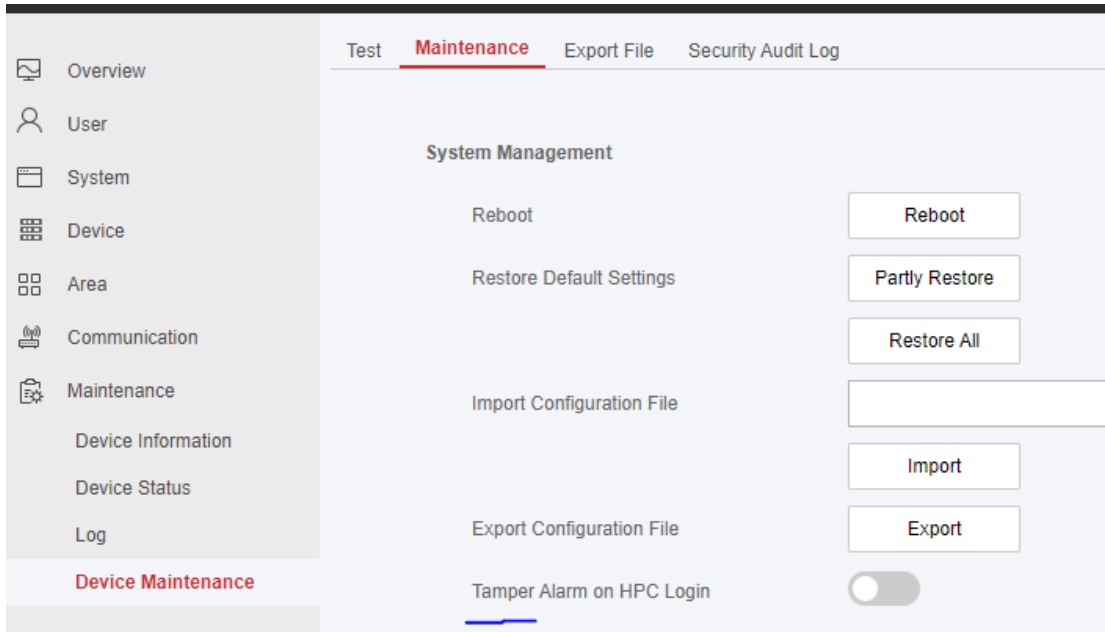
- Detect Network Camera Disconnection
- Panel Battery Fault Check
- LAN Fault Check
- WiFi Fault Check
- Cellular Fault Check
- Main Power Lost
- AC Power Loss Delay

Arm With Faults

	Checklist	Arm With Fault
Device Lid Opened	<input checked="" type="checkbox"/>	<input checked="" type="checkbox"/>
Zone/Peripherals Poll Failure/Offline	<input checked="" type="checkbox"/>	<input type="checkbox"/>
Zone/Peripherals Low Battery	<input checked="" type="checkbox"/>	<input checked="" type="checkbox"/>
Zone Triggered	<input checked="" type="checkbox"/>	<input checked="" type="checkbox"/>
Detect Network Camera Disconne...	<input checked="" type="checkbox"/>	<input checked="" type="checkbox"/>
Panel Battery Fault Check	<input checked="" type="checkbox"/>	<input checked="" type="checkbox"/>
LAN Fault Check	<input checked="" type="checkbox"/>	<input checked="" type="checkbox"/>
WiFi Fault Check	<input checked="" type="checkbox"/>	<input checked="" type="checkbox"/>
Cellular Fault Check	<input checked="" type="checkbox"/>	<input checked="" type="checkbox"/>
Main Power Lost	<input checked="" type="checkbox"/>	<input checked="" type="checkbox"/>

#### 4) Tamper detection optimization

In the Maintenance->Device Maintenance->Maintenance interface of WEB and Hik-pro connect, add the Tamper alarm on HPC Login configuration item.



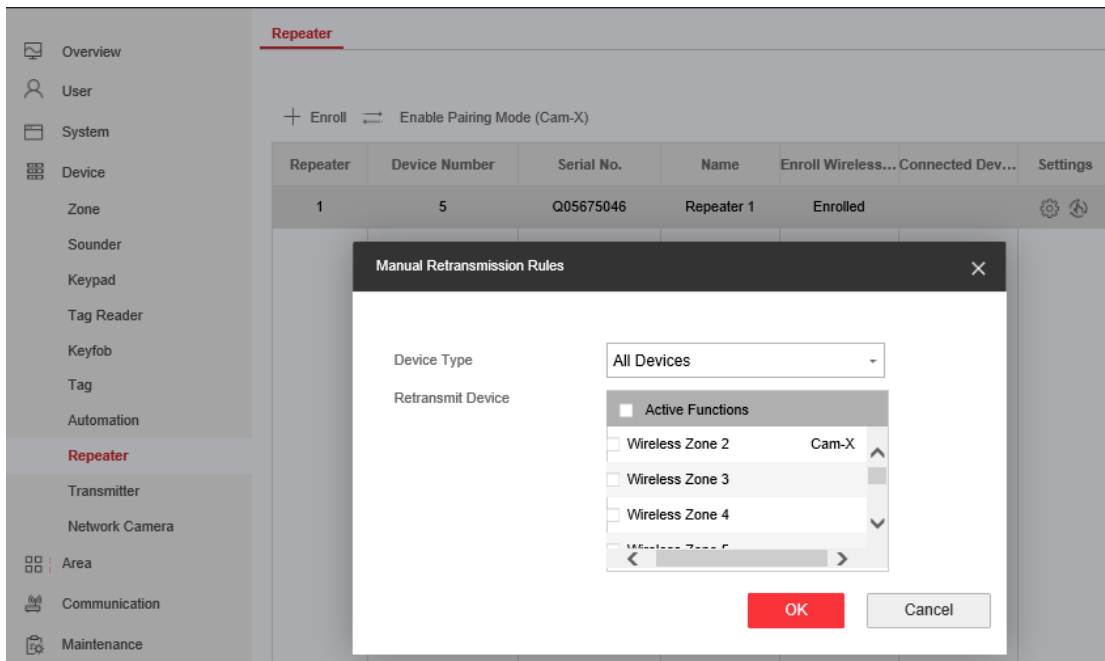
### 5) Repeater optimization

Hik-Connect supports selecting which repeater the detectors will forward through.

Ps. Both Cam-X and Tri-X peripherals supports this function.

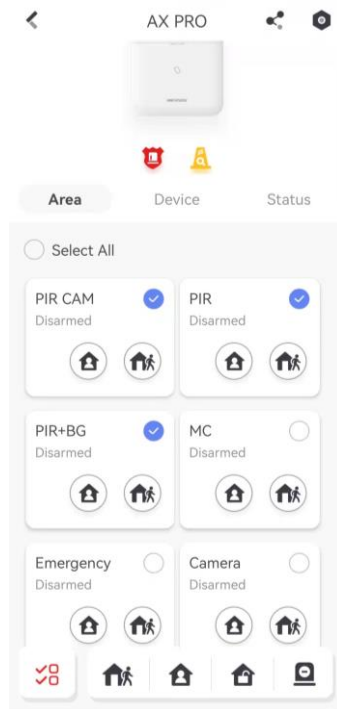
Cam-X detectors: PIR Cam, Cam-X smoke detector;

Tri-X peripherals: all detectors/transmitters/arming tools etc. except Cam-X detectors.



### 6) Hik-Connect arming/disarming optimization

Hik-Connect can select multiple areas for arming, disarming, or clear alarm by select.



## 7) Installer permission optimization

The installer has the permission to add cards and keyfob. The number of installers can be increased to 120 at most

## 8) Auto arming and disarming configuration permission optimization.

Support admin and Operator to set the automatic arming and disarming schedule of Area on Hik-Connect and Web.

**Remarks:**

- Hikvision reserves the right to change, alter or withdraw the above notification without prior notice.
- Product design and specifications are subject to change without prior notice.
- The Hikvision firmware may contain errors known as errata which may cause the product to deviate from published specifications. Current characterized errata are available on request.
- Hikvision is not liable for any typing or printing errors.

Hikvision Digital Technology CO., Ltd.  
No. 555 Qianmo Road, Binjiang District, Hangzhou 310051,  
China  
Tel: +86-571-8807-5998  
FAX: +86-571-8993-5635  
Email: [overseabusiness@hikvision.com](mailto:overseabusiness@hikvision.com)