

## Thermal Network PTZ Camera

Version:V5.5.10 build190326

### Release Note

(2019-5-24 )

### General Information

Firmware Version	V5.5.10 build 190326
SDK Version	V6.0.2.5_build20190105
Play Lib	V7.3.6.82
Web Component/Plugin Version	V4.0.1 build 190118/V3.0.7.12

## V5.5.10 Key Updates

1. Newly add back to scene time. It's configurable for user and range is 5s~100s. If device move to another position manually, it will back to scene when reach to setup time.

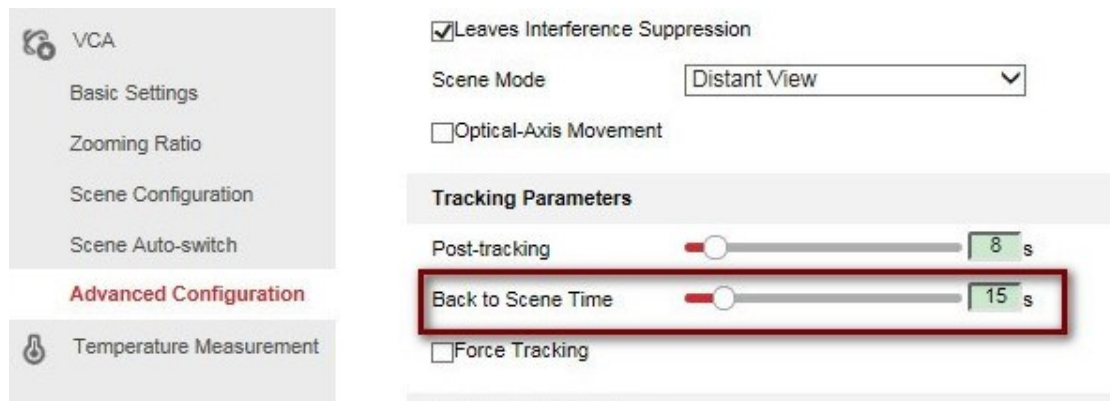


Figure 1

2. Newly add Temperature Change Adaption, it will reduce the out of focus issue caused by temperature change. It suitable for each preset, patrol and VCA scene.

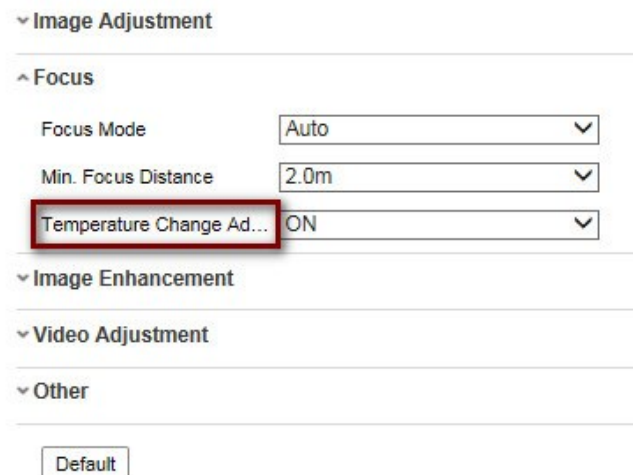


Figure 2

3. Newly add Filtering Time, it will reduce the false temperature exception alarm caused by moving high temperature target such as engine of car appear in detection area.

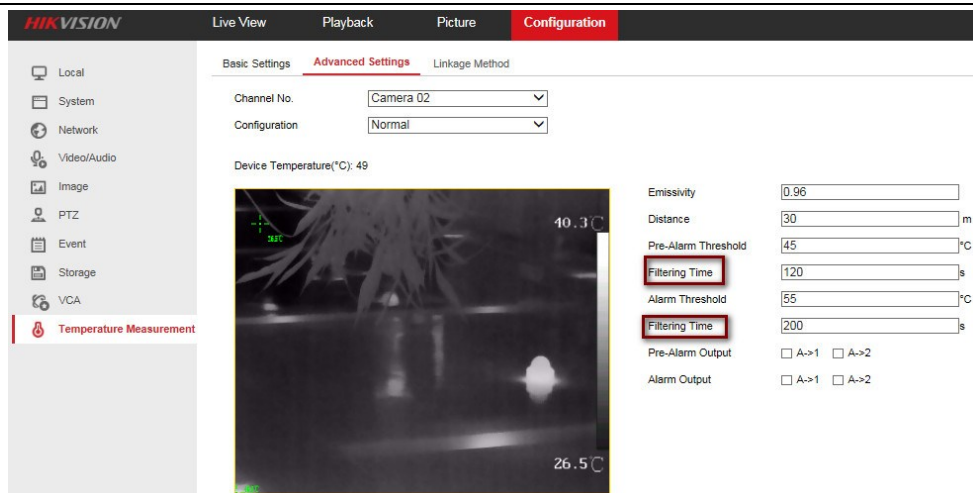


Figure 3

4. Newly add target box when device tracking the target.

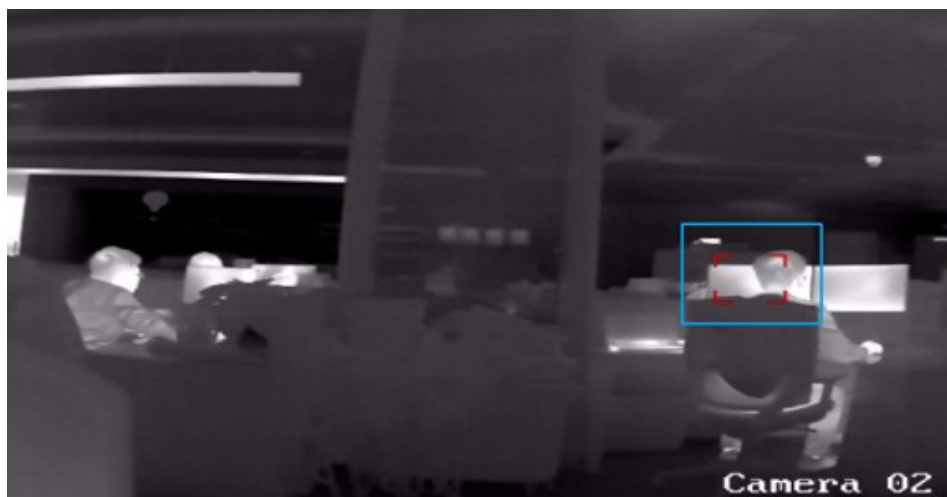


Figure 4

5. Focus function optimization. It means faster focus speed and less focus actions when calling preset and scene.
6. Add alarm threshold range limitation according to device real temperature range.

Emissivity	<input type="text" value="0.96"/>	
Distance	<input type="text" value="30"/>	m
Pre-Alarm Threshold	<input style="border: 2px solid red;" type="text" value="160"/>	°C <span style="border: 1px solid red; padding: 2px;">✘ Range -20-150</span>
Filtering Time	<input type="text" value="120"/>	s
Alarm Threshold	<input style="border: 2px solid red;" type="text" value="200"/>	°C <span style="border: 1px solid red; padding: 2px;">✘ Range -20-150</span>
Filtering Time	<input type="text" value="200"/>	s
Pre-Alarm Output	<input type="checkbox"/> A->1 <input type="checkbox"/> A->2	
Alarm Output	<input type="checkbox"/> A->1 <input type="checkbox"/> A->2	

Figure 5

- Remove save button of scene position. Save button shown in the bottom will save all the settings.

The screenshot shows the HIKVISION Configuration interface. The top navigation bar includes 'Live View', 'Playback', 'Picture', and 'Configuration' (highlighted in red). On the left, there is a sidebar menu with 'Local', 'System', 'Network', 'Video/Audio', and 'Image'. The main content area is titled 'Scene Parameters' and includes the following settings:

- Scene Name:
- Display Scene Name
- Track
- Tracking Duration:  s

Figure 6

## Supported Product List

DS-2TD8166-75C2F	DS-2TD8166-100C2F	DS-2TD8166-150ZE2F	DS-2TD8166-180ZE2F	
DS-2TD6236-50H2L	DS-2TD6236-75C2L	DS-2TD6236-100C2L	DS-2TD6266-50H2L	DS-2TD6266-75C2L
DS-2TD6266-100C2L	DS-2TD6236T-50H2L	DS-2TD6266T-25H2L	DS-2TD6266T-50H2L	
DS-2TD4166T-9	DS-2TD4166T-25	DS-2TD4166T-50	DS-2TD4136T-9	DS-2TD4136T-25
DS-2TD4136T-50	DS-2TD4136-25	DS-2TD4136-50	DS-2TD4166-25	DS-2TD4166-50

## Third Party Platform Compatibility List

Thermal camera Version	V5.5.10 build 190326				
Test equipment	Milestone	Mirasys	Seetec	ONSSI	Axonsoft
Version	Milestone XProtect series with Corporate 2017 R2	VMS Enterprise, VMS Pro	Cayuga R10	Ocularis 5.4(5.4.0.128)	Intellect 4.10.1
Live view(display VCA info)	√	×	×	×	√
Live view(display Fire point info)	×	×	×	×	×
Live view(display Temperature info)	×	√	×	×	×
Receive VCA Alarm info	√	√	√	√	√
Receive Dynamic Fire Detection info	×	×	×	×	×
Receive Temperature info	×	×	×	×	×

## Hikvision Resource Compatibility List

Thermal camera Version	V5.5.10 build 190326			
Test equipment	IVMS-4200	I series NVR	IE explorer	HIK central
Version	V2.6.1.6 build20170426	DS-96XX-I16 NVR V4.1.50 180227	IE7+	V1.1.1
Live view(display VCA info)	√	√(Web,4200)	√	√
Live view(display Fire point info)	√	√(Web,4200)	√	√
Live view(display Temperature info)	√	√(Web,4200)	√	√
Remote setup VCA rules (Line Crossing,Intrusion,Region Entrance,Region Exiting)	√	√(Web)	√	√ (Software associated with the browser to configure)
Setup Dynamic Fire Detection	√	√(4200, only support linkage)	√	√ (Software associated with the browser to configure)
Setup Temperature Measurement	√	√(4200, only support linkage)	√	√ (Software associated with the browser to configure)
Receive VCA Alarm info	√	√(4200)	×	√
Receive Dynamic Fire Detection info	√	√(4200)	×	√
Receive Temperature info	√	√(4200)	×	√
Playback(display VCA info)	√	√(Web,4200)	√	√
Playback(display Fire point info)	√	√(Web,4200)	√	√
Playback(display Temperature info)	√	√(Web,4200)	√	√