



**How to use the public password of the Door Station
to open the door**

Title:	How to use the public password of the Door Station to open the door	Version:	v1.0	Date:	2021/08/16
Product:	Video Intercom			Page:	1 of 2

Preparation

1. This guide takes

Type	Model	Version
Door station	DS-KD8003-IME1	V2.2.45_build210430
Sub module	DS-KD-KP	V1.0.0_build191213

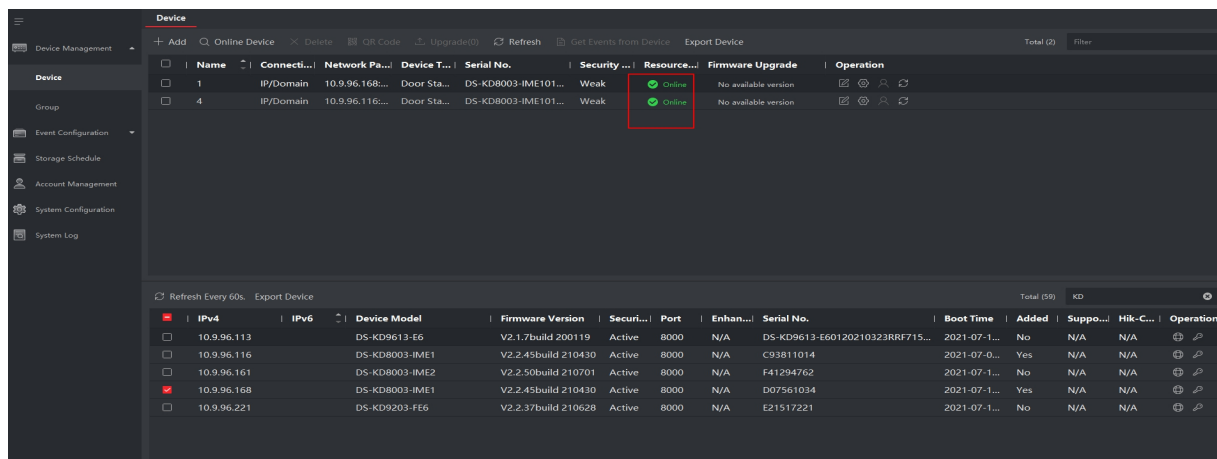
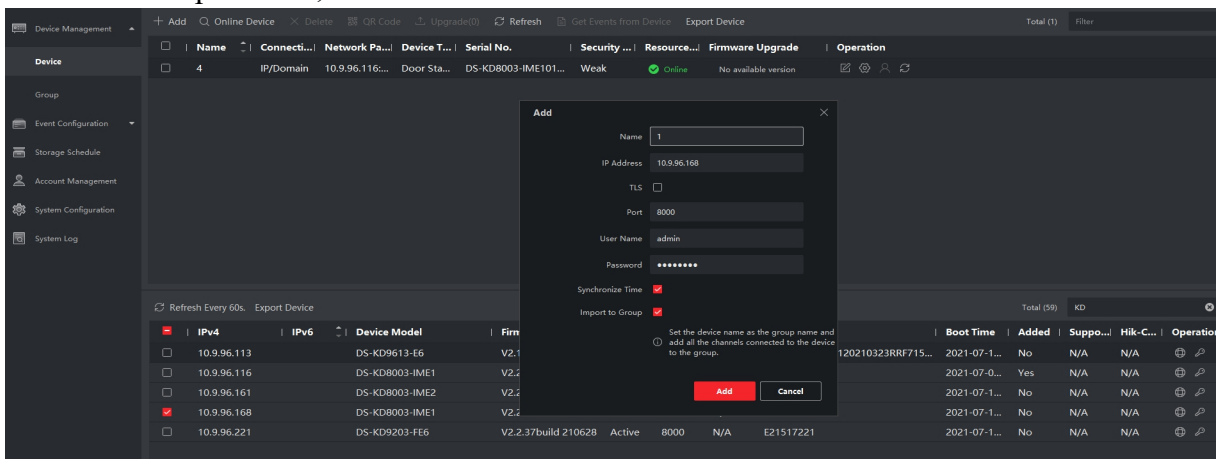
As examples to introduce How to open door with public password.

2. Software: iVMS-4200 Version 3.6.1.3

How to use the public password of the Door Station to open the door

1. Add Devices on iVMS-4200

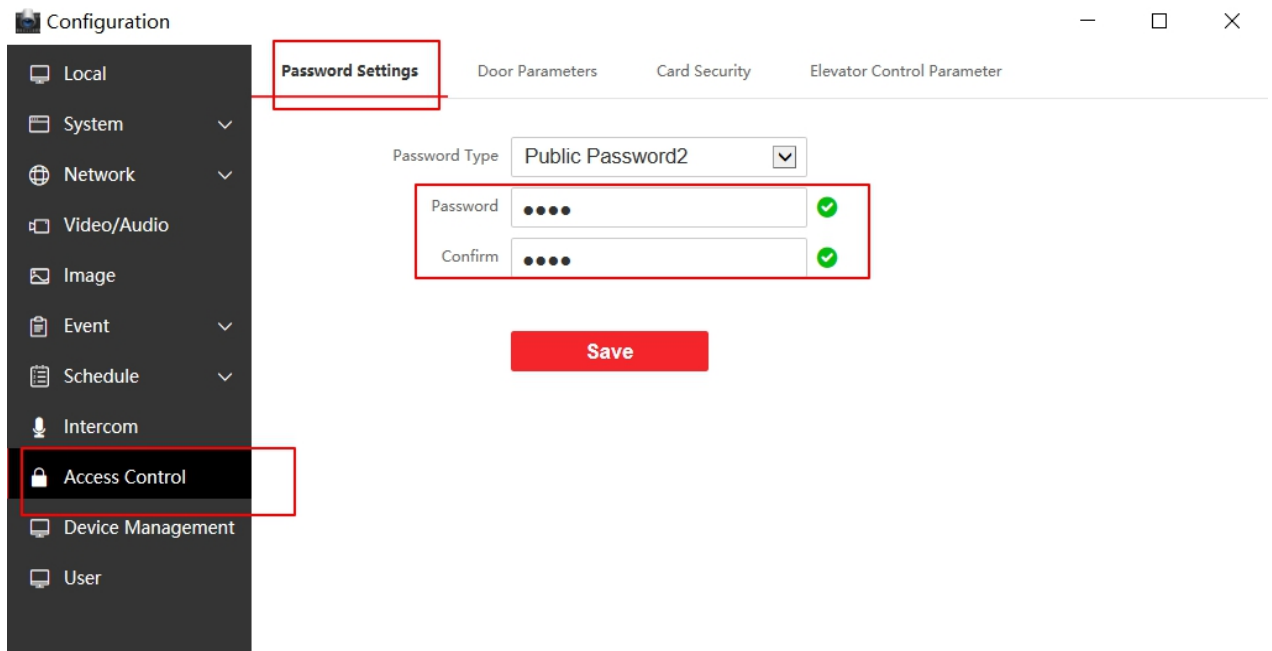
- 1) Search for online devices and add the door station on iVMS-4200, enter username and password, and then confirm that the device is online.



2. Set a public password for the Door Station

- 1) Go to Remote Configuration → Access Control → Password settings to set a public password

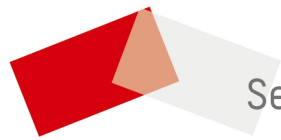
Title:	How to use the public password of the Door Station to open the door	Version:	v1.0	Date:	2021/08/16
Product:	Video Intercom			Page:	2 of 2



Notice: you can set up to 16 public passwords and each password consists 4-6 digits.

3. Open door with the public password

Enter the public password in the format of **#public password#** on the keypad and you will hear the voice prompt “the door is open”



See Far, Go Further