



How to batch register indoor station to door station

Title:	How to batch register indoor station to door station	Version:	v1.0	Date:	2020/11/24
Product:	Video Intercom			Page:	1 of 3

Preparation

1. This guide takes

Type	Model	Version
Indoor station	DS-KH8520-WTE1	V2.1.10_200713
Indoor station	DS-KH8350-WTE1	V2.1.10_200713
Door station	DS-KV8413-WME1(B)	V2.2.3_200805

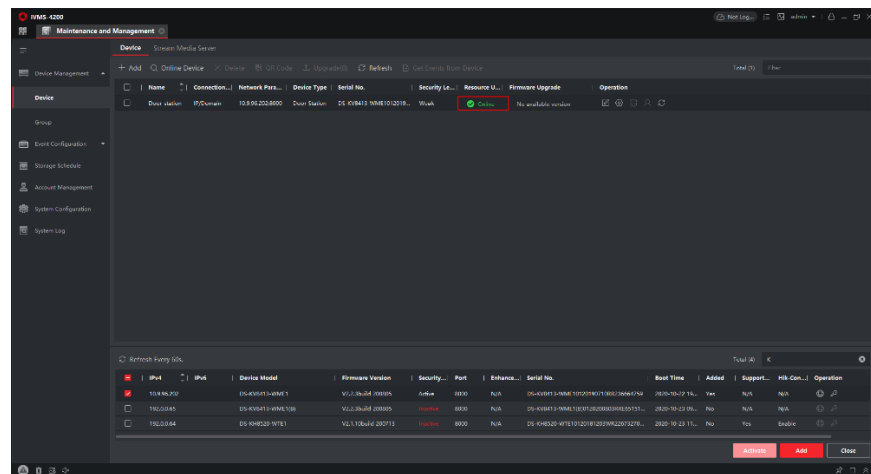
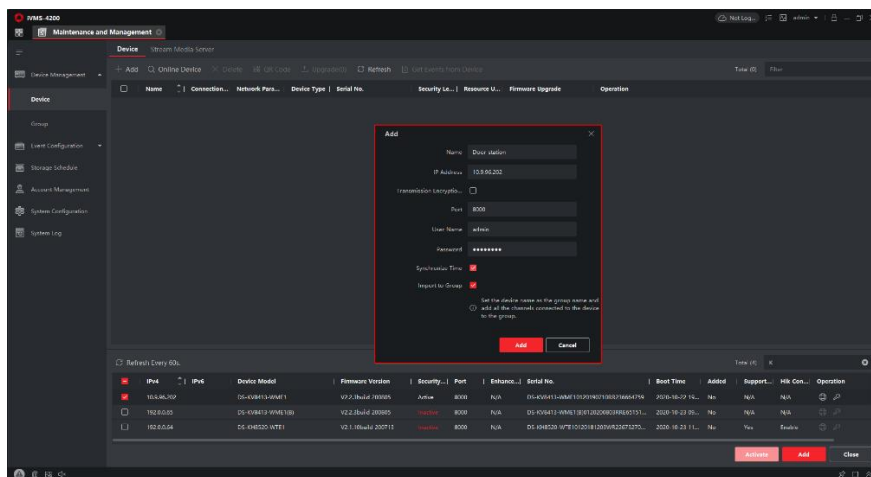
As examples to introduce batch register indoor station to door station.

2. Software: iVMS-4200 Version 3.4.0.9

How to batch register indoor station to door station

1. Add Devices on iVMS-4200

- 1) Search for online devices and add the door station on iVMS-4200, enter username and password, and then confirm that the device is online.

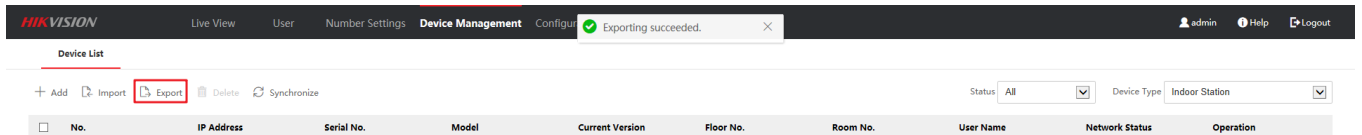


Title:	How to batch register indoor station to door station	Version:	v1.0	Date:	2020/11/24
Product:	Video Intercom			Page:	2 of 3

2. Batch register Indoor station to Door station

- 1) When enter the remote configuration of the door station, choose **Device Management > Export**, Export the **channelConfig** files to fill in with the device

info. 



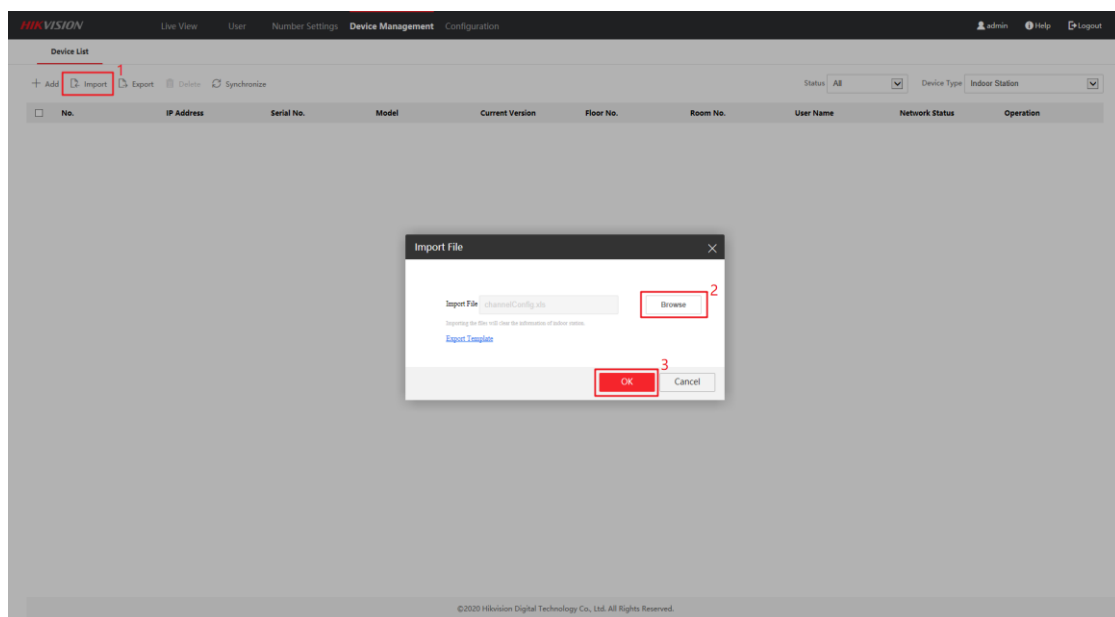
- 2) The following page shows the info which is necessary for you to complete, all the instructions are given in to top of the list.

The indoor station list on the page is used for data import, so all fields are required. The grey cell represents an example.
Fill in the excel by following rules below.

1. Device Type: Indoor Station
2. Serial No.: 9-digit serial No. on the tag of the device
3. Indoor Station Admin Password: Valid password range [8-16]. You can use a combination of numbers, lowercase, uppercase and special character for your password with at least two kinds of them contained.
4. Registration code: Registration code: For adding the device to the main door station. Valid password range [8-16]. You can use a combination of numbers, lowercase, uppercase and special character for your password with at least two kinds of them contained.
5. Floor No. Range: 1 to 999
6. Room No. Range: 1 to 9999
7. IP Address / IP Mask / Gateway: Supports IPv4

Indoor Station List										
No.	Device Type	Serial No.	Admin Password	Regist Password	Floor No.	Room No.	IP Address	IP Mask	Gateway	
4	Indoor Station	226732706	1qaz2wsx	1234567a	1	1	10.9.96.117	255.255.255.0	10.9.96.254	
5	Indoor Station	Q01570170	1qaz2wsx	1234567a	1	2	10.9.96.118	255.255.255.0	10.9.96.254	
6		This item must be filled in according to the actual device's serial number	There are the configurations we made to the indoor station							

- 3) When you complete the device info, choose **Import > Import File > Browse**, upload the file.



Title:	How to batch register indoor station to door station	Version:	v1.0	Date:	2020/11/24
Product:	Video Intercom			Page:	3 of 3

4) When you complete import the device info, you will notice the following situation.

The screenshot shows the Hikvision Device Management interface. The 'Device List' table contains two entries, both with a red triangle icon and the status 'Offline'.

No.	IP Address	Serial No.	Model	Current Version	Floor No.	Room No.	User Name	Network Status	Operation
1	10.9.96.117	226732706			1	1	admin	Offline	[Edit] [Delete]
2	10.9.96.118	Q01570170			1	2	admin	Offline	[Edit] [Delete]

5) Make sure the room number which you set before has no conflict with each other, then wait 2 to 8 minutes, the devices will be online.

The screenshot shows the Hikvision Device Management interface after a refresh. The 'Device List' table now shows both indoor stations with a green checkmark icon and the status 'Online'.

No.	IP Address	Serial No.	Model	Current Version	Floor No.	Room No.	User Name	Network Status	Operation
1	10.9.96.117	226732706			1	1	admin	Online	[Edit] [Refresh] [Delete]
2	10.9.96.118	Q01570170			1	2	admin	Online	[Edit] [Refresh] [Delete]

Note: The **registration password** is the password that must be configured for the activated device. When the door station adds an activated indoor station, the registration password of the indoor station must be known. The inactive indoor station can be directly assigned by door station.



See Far, Go Further