



How to configure the second lock on door station

Title:	How to configure the second lock on door station	Version:	v1.0	Date:	2020/11/24
Product:	Video Intercom			Page:	1 of 3

Preparation

1. This guide takes

Type	Model	Version
Indoor station	DS-KH8520-WTE1	V2.2.3_2000713
Door station	DS-KV8413-WME1(B)	V2.2.3_200805

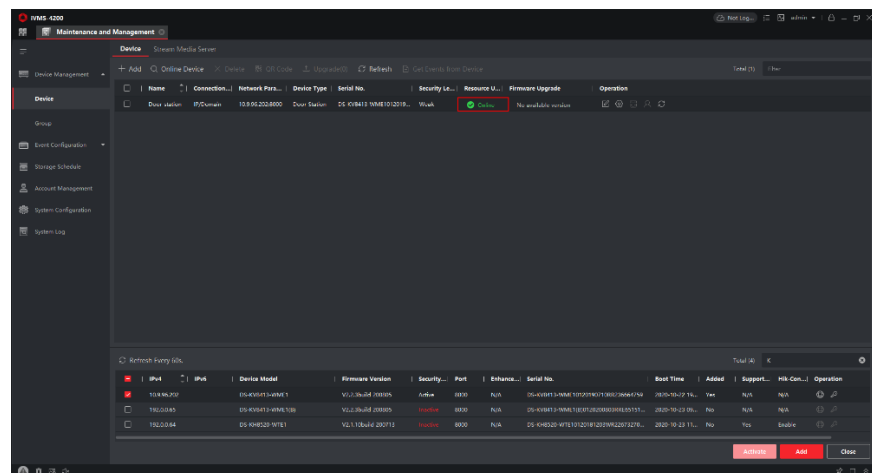
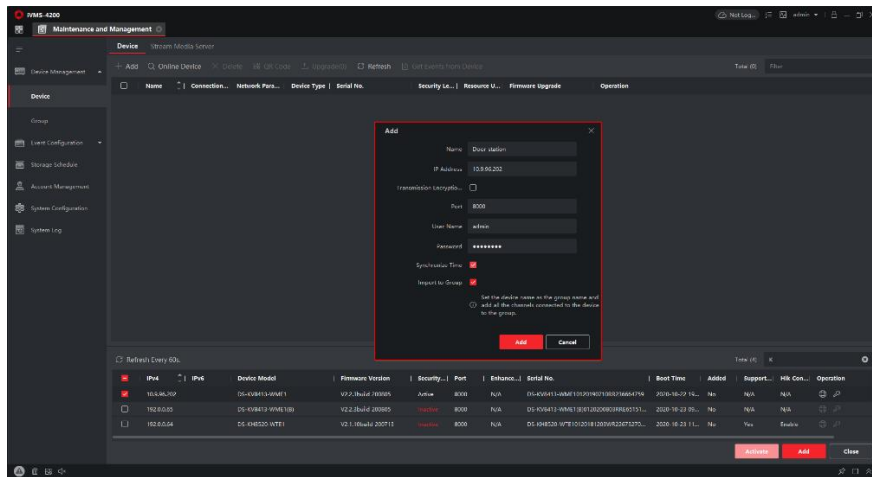
As examples to introduce configure the second lock on door station

2. Software: iVMS-4200 Version 3.4.0.9

How to configure the second lock on door station

1. Add Devices on iVMS-4200

- 1) Search for online devices and add the door station on iVMS-4200, enter username and password, and then confirm that the device is online.

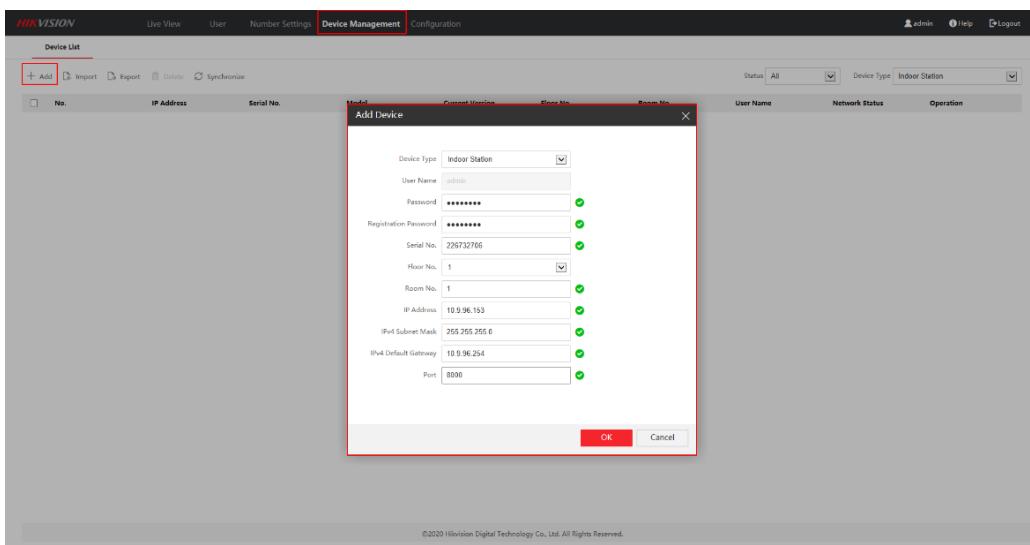


Title:	How to configure the second lock on door station	Version:	v1.0	Date:	2020/11/24
Product:	Video Intercom			Page:	2 of 3

2. Add Indoor Station to Door Station

- 1) Then go to **Device Management** → **Add**, set the **Device Type** as Indoor Station, fill in the necessary info of the device.

Note: The **password** is the device's password, if the device is inactive, set a new password in this page. The **registration password** is the password that must be configured for the activated device. When the door station adds an activated indoor station, the registration password of the indoor station must be known. The inactive indoor station can be directly assigned by door station. The **Port** is 8000.

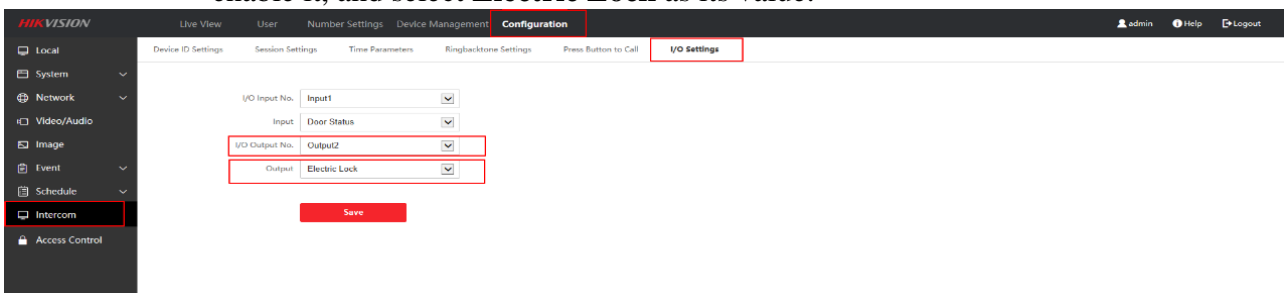


- 2) After we complete the device info, wait 5 to 10 minutes, you will see the page as shown below and the devices will be online

No.	IP Address	Serial No.	Model	Current Version	Floor No.	Room No.	User Name	Network Status	Operation
1	10.9.96.152	226732706	DS-KH8520-WTE1	V2.1.10 build 200713	1	1	admin	Online	

3. Configure the Second lock on the Door Station

- 1) Choose **Configuration** → **Intercom** → **I/O Setting**, Set the **I/O Output No. Output2**, enable it, and select **Electric Lock** as its value.



Title:	How to configure the second lock on door station	Version:	v1.0	Date:	2020/11/24
Product:	Video Intercom	Page:	3 of 3		

- 2) When call the indoor station by door station, the user interface will be shown as below, you should notice there are two unlock options in the screen.





See Far, Go Further