



How to batch register sub door station to door station

Title:	How to batch register sub door station to door station	Version:	v1.0	Date:	2020/11/24
Product:	Video Intercom			Page:	1 of 3

Preparation

1. This guide takes

Type	Model	Version
Door station	DS-KV8113-WME1(B)	V2.2.3_200805
Door station*2	DS-KV8413-WME1(B)	V2.2.3_200805

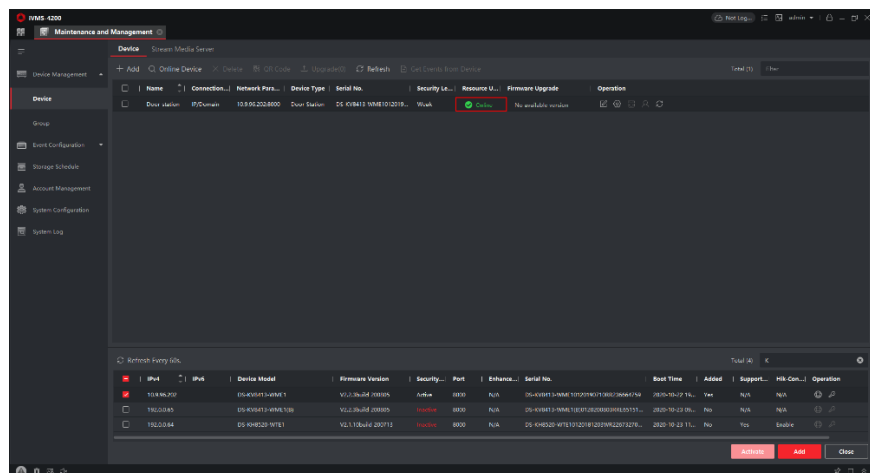
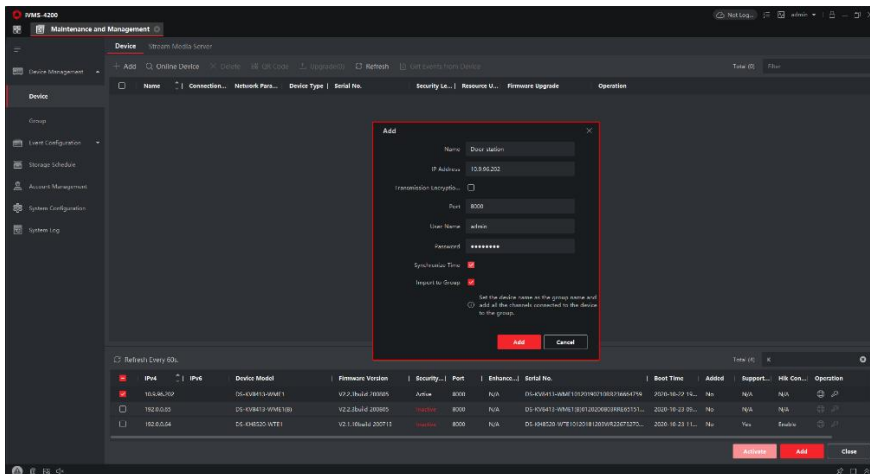
As examples to introduce batch register sub-door station to door station.

2. Software: iVMS-4200 Version 3.4.0.9

How to batch register sub door station to door station

1. Add Devices on iVMS-4200

- 1) Search for online devices and add the door station on iVMS-4200, enter username and password, and then confirm that the device is online.

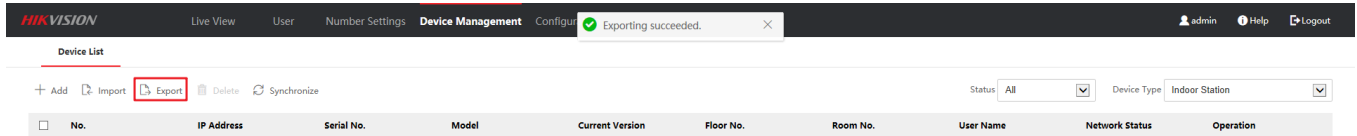


Title:	How to batch register indoor station to door station	Version:	v1.0	Date:	2020/11/24
Product:	Video Intercom	Page:	2 of 3		

2. Batch register Sub-door station to Door station

- 1) When enter the remote configuration of the door station, choose **Device Management**, select **device type** as **sub door station**, then **Export** the

channelConfig files to fill in with the device info.



- 2) The following page shows the info which is necessary for you to complete, all the instructions are given in the top of the list.

The door station list on the page is used for data import, so all fields are required. The grey cell represents an example.
Fill in the excel by following rules below.

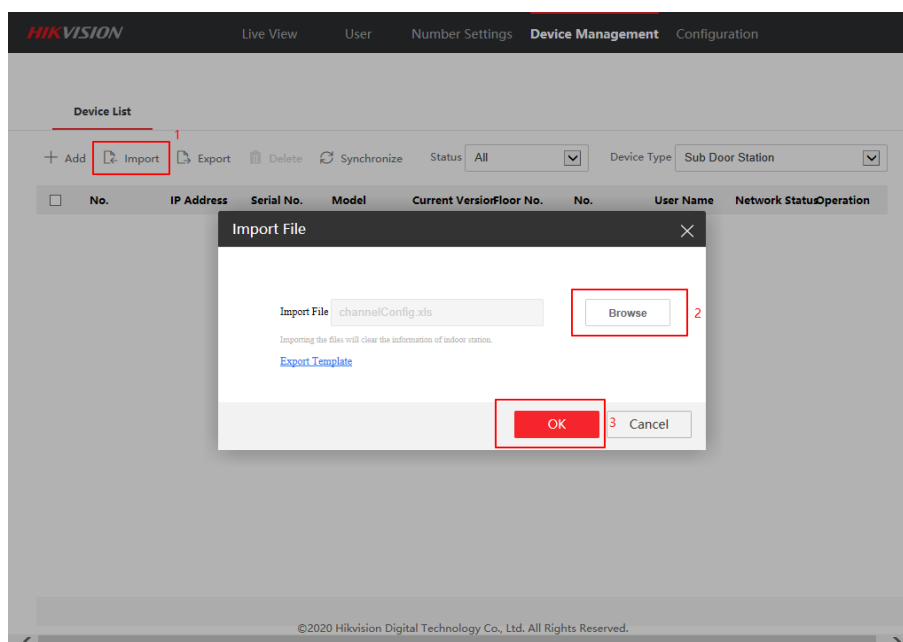
- 1.Device Type: Door Station
- 2.Serial No.: 9-digit serial No. on the tag of the device
- 3.Sub Door Station Admin Password: Valid password range [8-16]. You can use a combination of numbers, lowercase, uppercase and special character for your password with at least two kinds of them contained.
- 4.Registration code: For adding the device to the main door station. Valid password range [8-16]. You can use a combination of numbers, lowercase, uppercase and special character for your password with at least two kinds of them contained.
- 5.Floor No. Range: -10 to 10
- 6.No. Range: 1 to 16
- 7.IP Address/IP Mask/Gateway: Supports IPv4

Door Station List								
Device Type	Serial No.	Admin Password	Regit Password	Floor No.	No.	IP Address	IP Mask	Gateway
Door Station	236664759	qaz2wxc	1234567a	1	1	192.168.1.110	255.255.255.0	192.168.1.254
Door Station	237903914	qaz2wxc	1234567a	1	2	192.168.1.108	255.255.255.0	192.168.1.254
Door Station	237903927	qaz2wxc	1234567a	1	3	192.168.1.109	255.255.255.0	192.168.1.254

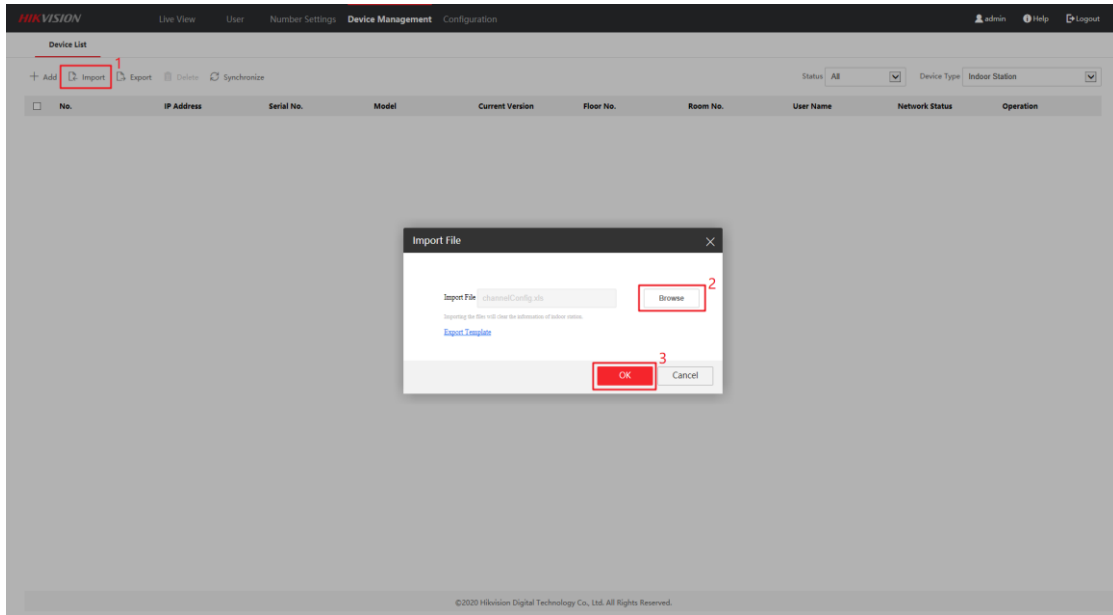
This item must be filled in according to the actual device's serial number.

There are configurations we made to the door stations.

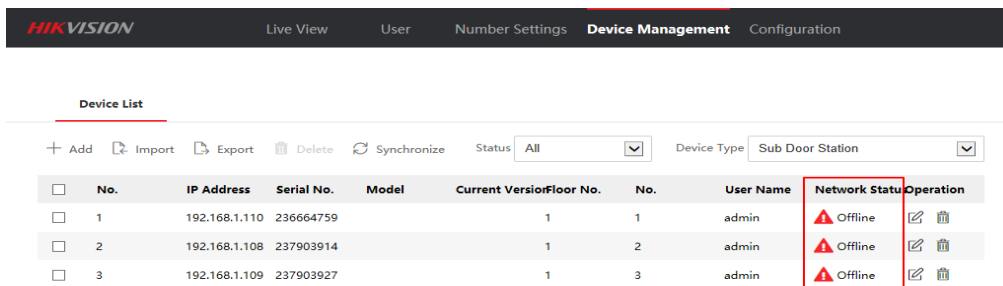
- 3) When you complete the device info, choose **Import** > **Import File** > **Browse**, upload the file.



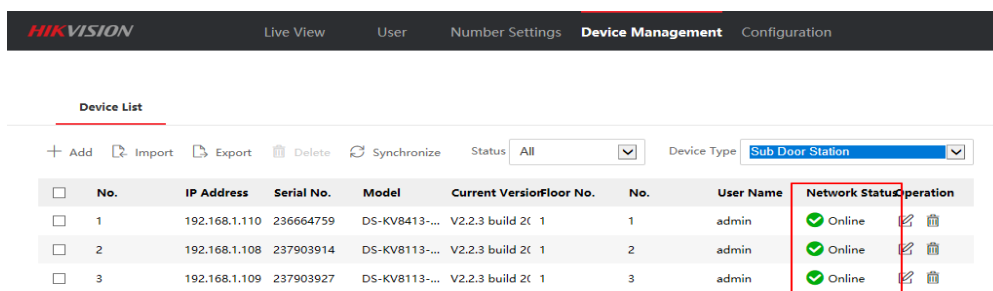
Title:	How to batch register indoor station to door station	Version:	v1.0	Date:	2020/11/24
Product:	Video Intercom			Page:	3 of 3



4) When you complete import the device info, you will notice the following situation.



5) Make sure the room number which you set before has **no conflict with each other**, then wait 2 to 8 minutes, the devices will be online.





See Far, Go Further