



How to add Ringtone on Indoor Station

Title:	How to add Ringtone on Indoor Station	Version:	v1.0	Date:	2020/11/24
Product:	Video Intercom			Page:	1 of 3

Preparation

1. This guide takes

Type	Model	Version
Indoor station	DS-KH8520-WTE1	V2.1.10_200713

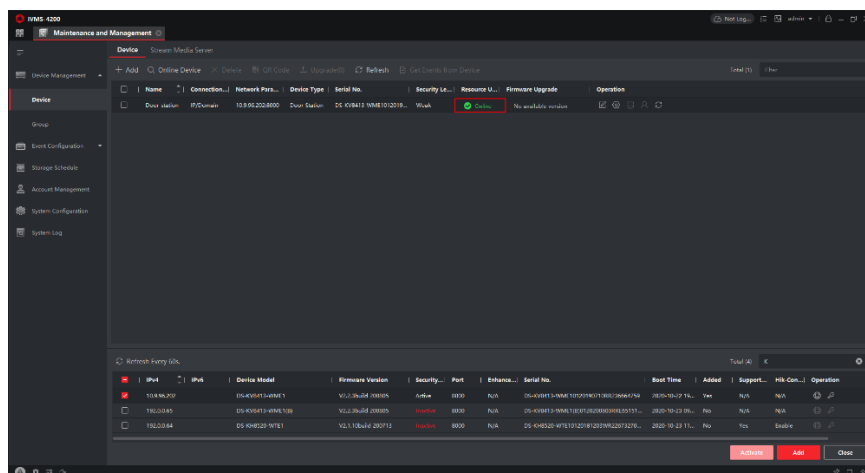
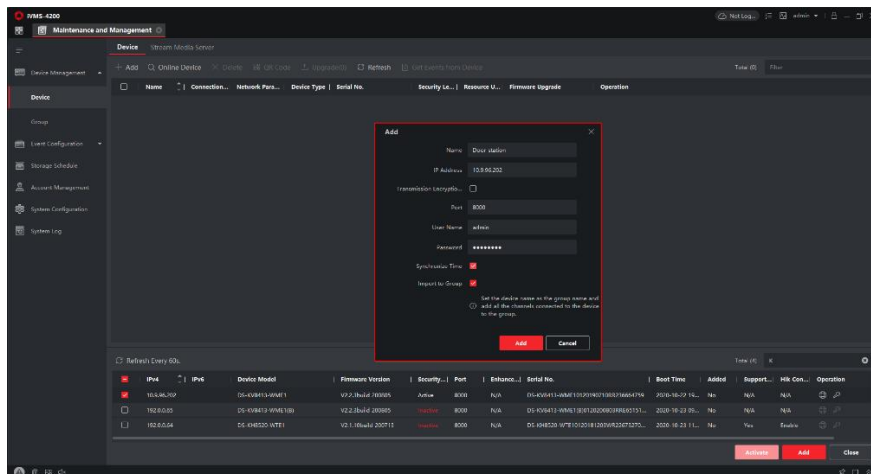
As examples to introduce add Ringtone on Indoor Station

2. Software: iVMS-4200 Version 3.4.0.9

How to add Ringtone on Indoor Station

1. Add Devices on iVMS-4200

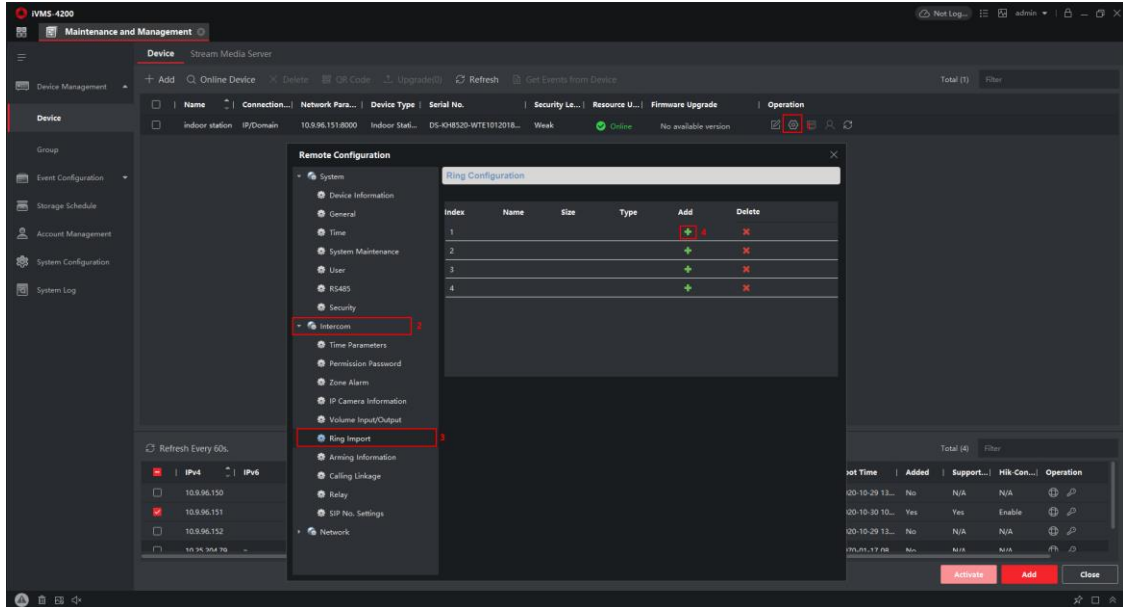
- 1) Search for online devices and add the door station on iVMS-4200, enter username and password, and then confirm that the device is online.



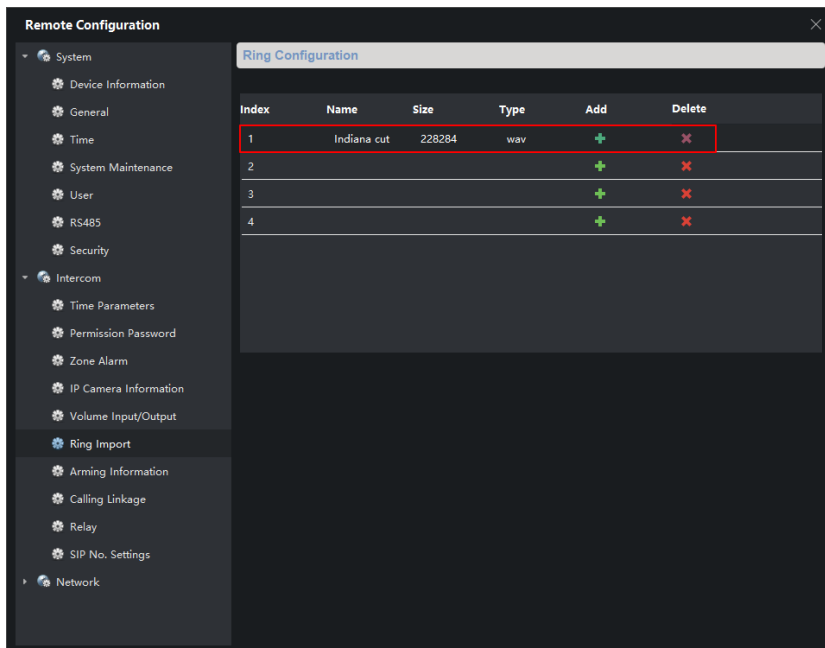
Title:	How to add Ringtone on Indoor Station	Version:	v1.0	Date:	2020/11/24
Product:	Video Intercom			Page:	2 of 3

2. Add Ringtone on Indoor Station

- 1) Choose the Indoor station, then go to **remote configuration** → **Intercom** → **Ring Import** → **+**.



- 2) **Upload** prepared ringtones, and you will see the page shown below.



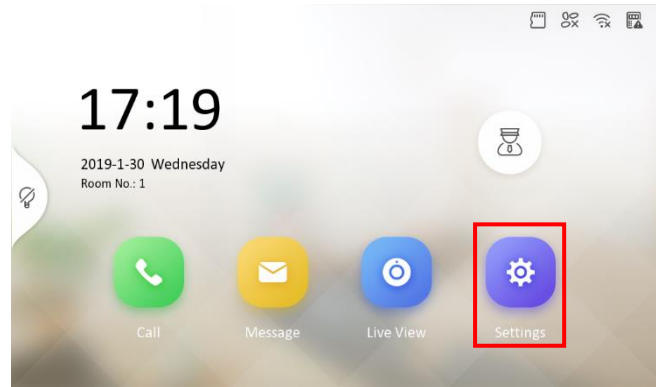
NOTE: The uploaded audio file needs to meet the following **conditions**:

- 1) Format: .wav;
- 2) Capacity: ≤300K;
- 3) Sampling rate: 8KHz;
- 4) Mono;
- 5) 128Kbps

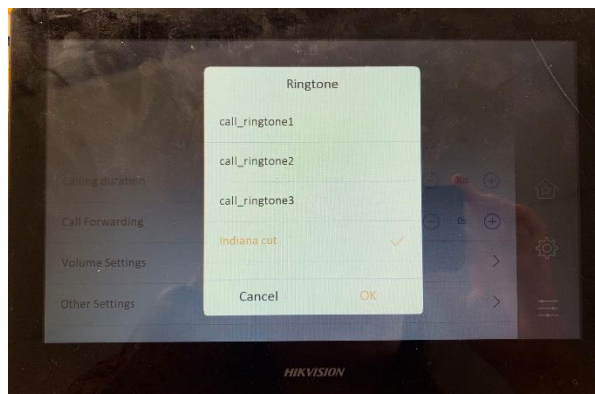
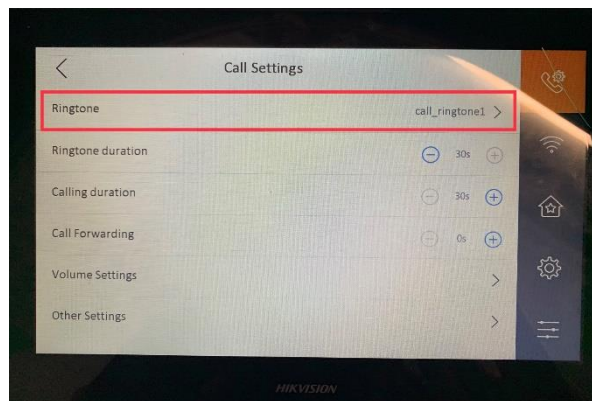
Title:	How to add Ringtone on Indoor Station	Version:	v1.0	Date:	2020/11/24
Product:	Video Intercom			Page:	3 of 3

3. Set the ringtone on the device

- 1) Go to **Settings** on the home page.



- 2) Then go to **Call settings**, choose **Ringtone**, and select the **uploaded ringtone**. You can hear this ringtone when the indoor station is called.





See Far, Go Further