


# Android Indoor Station Firmware V2.1.22\_build210525 Release Note (2021-06-03)

Device Model	DS-KH9310-WTE1, DS-KH9510-WTE1
Firmware Version	Android Indoor Station : V2.1.22_build210525
iVMS-4200 Version	Latest baseline
Hik-Connect APP	Latest version

## **New Function**

1. On the basis of supporting English, French, Spanish, German, Italian, newly added multi-language Polish, Portuguese (Brazil), Russian, Turkish, Hungarian, Dutch, Romanian, Czech, Bulgarian, Ukrainian.
2. Add Hik-Connect Service Settings in Wizard.

Wizard-Hik-Connect Service Settings 4/5

 Enable Hik-Connect Service

---

LBS Server litedev.hik-connect.com

---

Verification Code

---

Previous Next Skip

## **Modify**

1. Hik-Connect service is disabled by default for privacy protection and add Enable Switch for verification code display in Hik-Connect Server Settings.

< Hik-Connect Server Settings

 Cloud Service

LBS litedev.hik-connectru.com

Verification Code

Hik-Connect Server Status Disconnected



< Hik-Connect Server Settings

 Cloud Service

LBS litedev.hik-connectru.com

Verification Code  .7a

Hik-Connect Server Status Disconnected



## **Android Indoor Station Firmware V2.1.16\_210316 Release Note (2021-03-18)**

Device Model	DS-KH9310-WTE1, DS-KH9510-WTE1
Firmware Version	Android Indoor Station : V2.1.16_210316
iVMS-4200 Version	3.4.0.10 Build201214
Hik-Connect APP	4.11.0.927220

### **New Function**

1. Repair the custom ringtone failure after restart.

### **Modify**

## **Android Indoor Station Firmware V2.1.16\_201223 Release Note (2021-01-05)**

Device Model	DS-KH9310-WTE1, DS-KH9510-WTE1
Firmware Version	Android Indoor Station : V2.1.16_201223
iVMS-4200 Version	3.4.0.10 Build201214
Hik-Connect APP	4..11.0.927220

### **New Function**

1. Update Hik-Connect APP to support access to AXpro and MinMoe.
2. If the third-party APP only supports vertical screen, it will be forced to display horizontally.

### **Modify**

1. Modify the language display of some errors

# Android Indoor Station

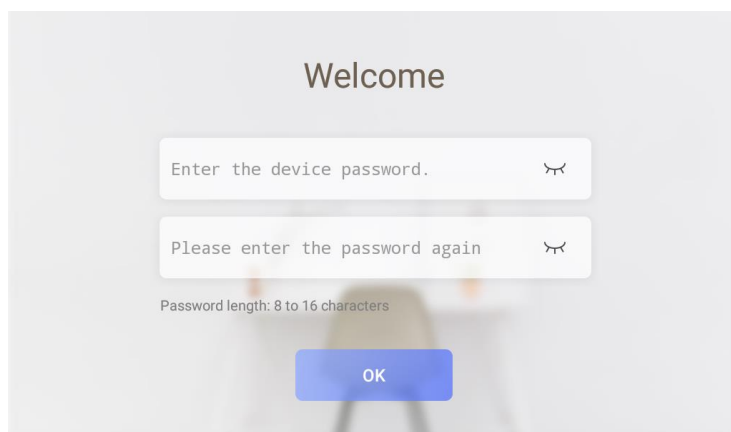
## V 2.1.8 Build 200515 Release Note

### (2020-06-01)

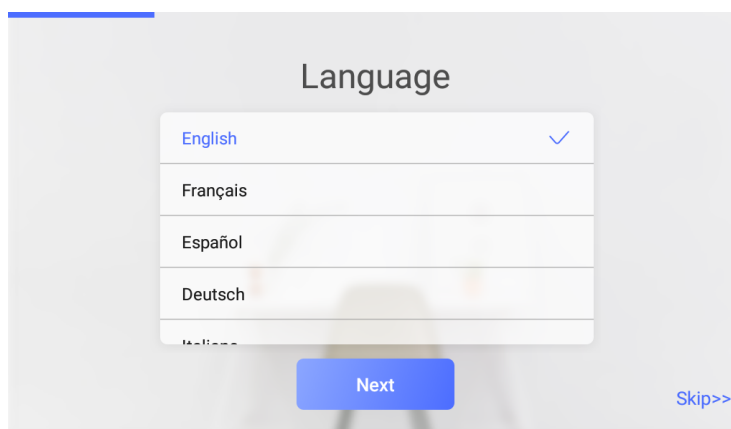
Device Model	DS-KH9510-WTE1、DS-KH9310-WTE1
Firmware Version	Indoor Station: V2.1.8_build200714
iVMS-4200 Version	V3.3.1.4 build 200806
Hik-Connect APP	V4.6.2.0724

#### **Function Description**

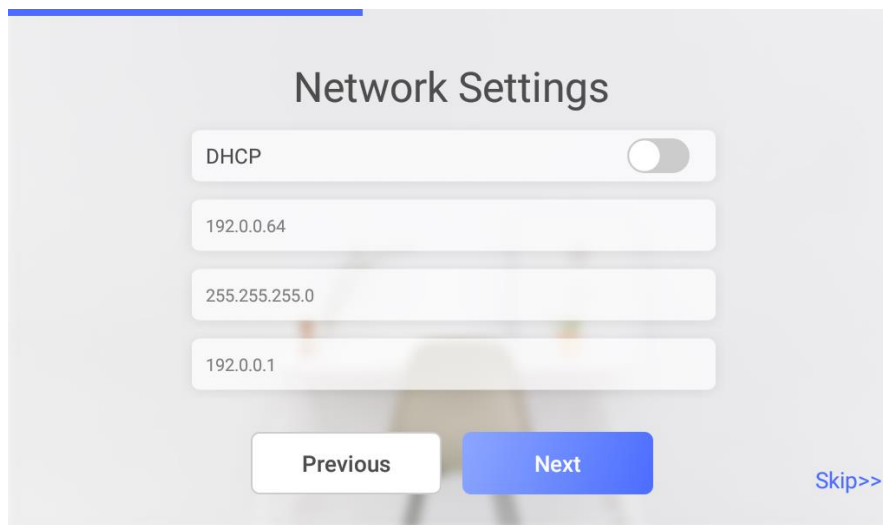
1. New Android UI interface.
2. Languages
  - a) Support multi-language in 5 countries, language types include English, French, Spanish, German, and Italian;
  - b) Support local switching and remote switching of different languages, effective immediately.
3. Local configuration wizard
  - a. Activation interface



- b. Language interface



## c. Network Setting interface



Network Settings

DHCP

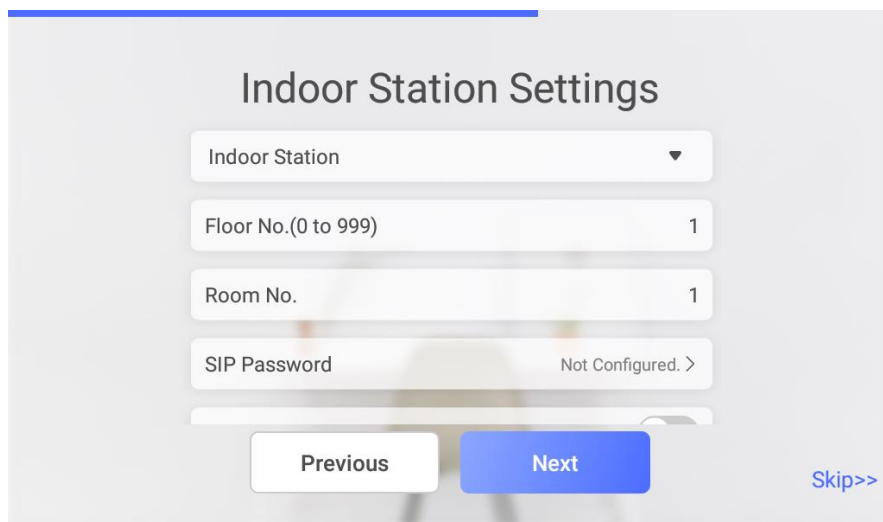
192.0.0.64

255.255.255.0

192.0.0.1

Previous Next Skip>>

## d. Indoor Station Parameter Settings



Indoor Station Settings

Indoor Station ▼

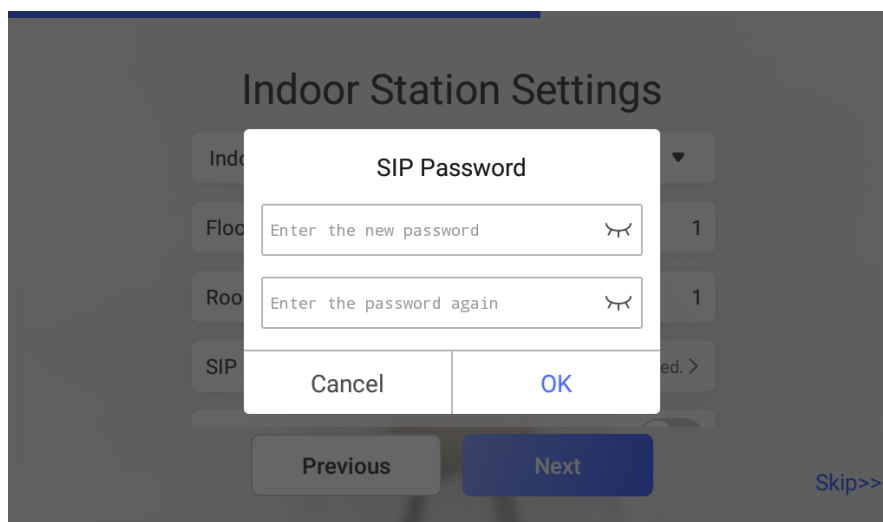
Floor No.(0 to 999) 1

Room No. 1

SIP Password Not Configured. >

Previous Next Skip>>

SIP password is actually Register Password, which is suitable for our security 2.0 protocol. They can communicate normally only when the **SIP passwords (Register passwords)** of the door station, indoor station and indoor extension are the **same**.



Indoor Station Settings

SIP Password

Enter the new password

Enter the password again

Cancel OK

Previous Next Skip>>

## e. Indoor extension Parameter Settings

### Indoor Station Settings

Indoor Extension ▼

Extension No. 1

SIP Password Configured >

Select Indoor Station 0.0.0.0 >

Previous Finish

## f. Activate and connect door station

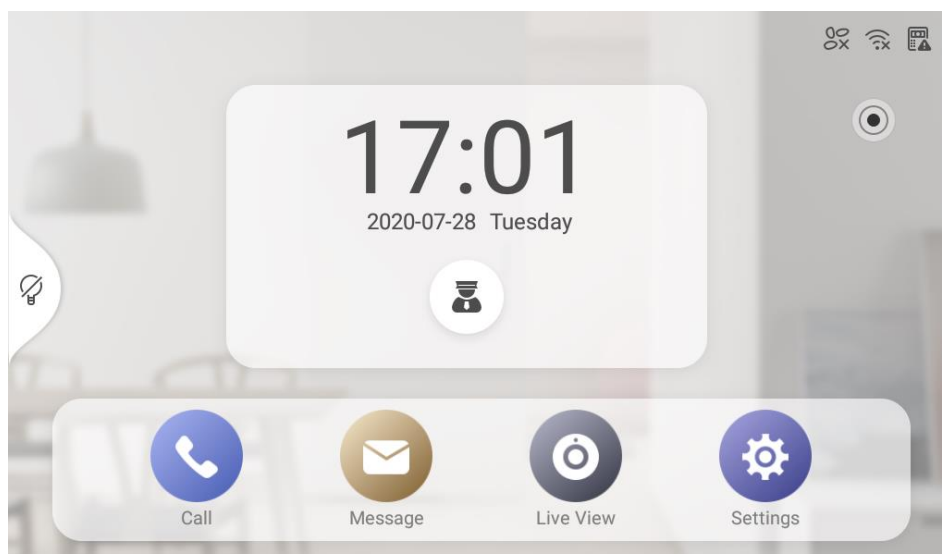
### Door Station Settings

Enter the serial No. 🔍

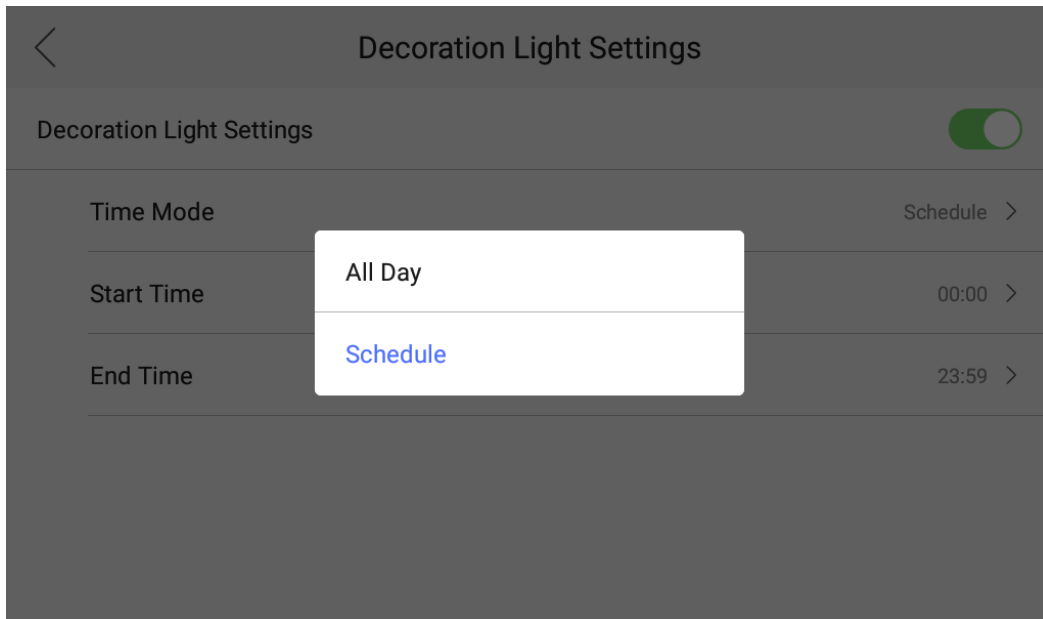
<input type="radio"/>	E39931984 10.9.96.13	DS-K1T671TM-3XF Activated. <span>⚙️</span>
<input type="radio"/>	E05283498 10.9.96.17	DS-K1T671TMFW Activated. <span>⚙️</span>
<input checked="" type="radio"/>	C32948021 10.9.96.17	DS-KD8003-IME1 Activated. <span>⚙️</span>
<input type="radio"/>	E35500009	DS-K1T671TM-3XF <span>⚙️</span>

Previous Finish

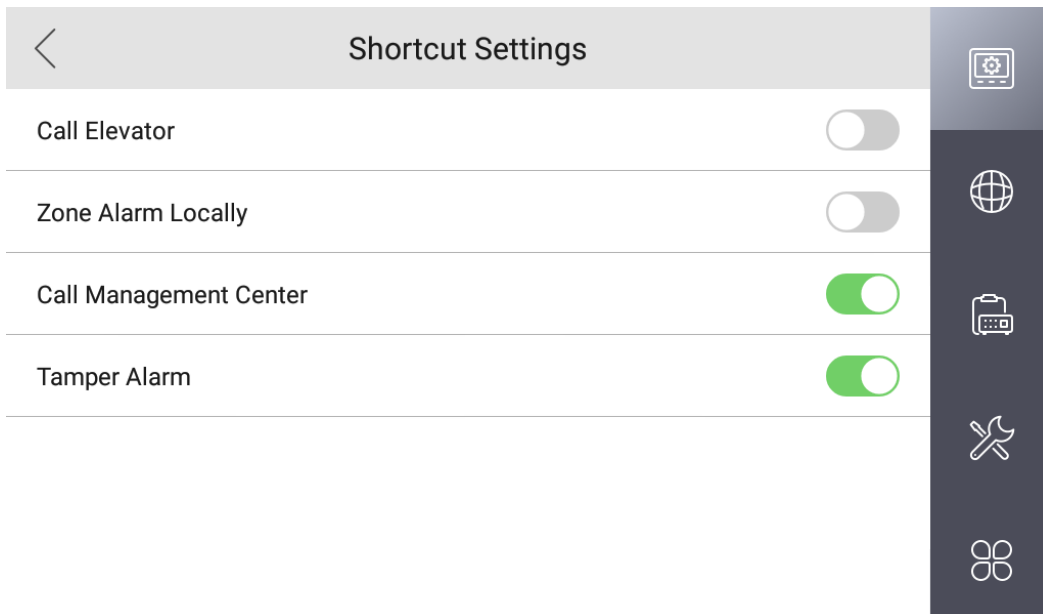
## g. Local main interface



## 4. Support decoration light on or off, but only supports local modification

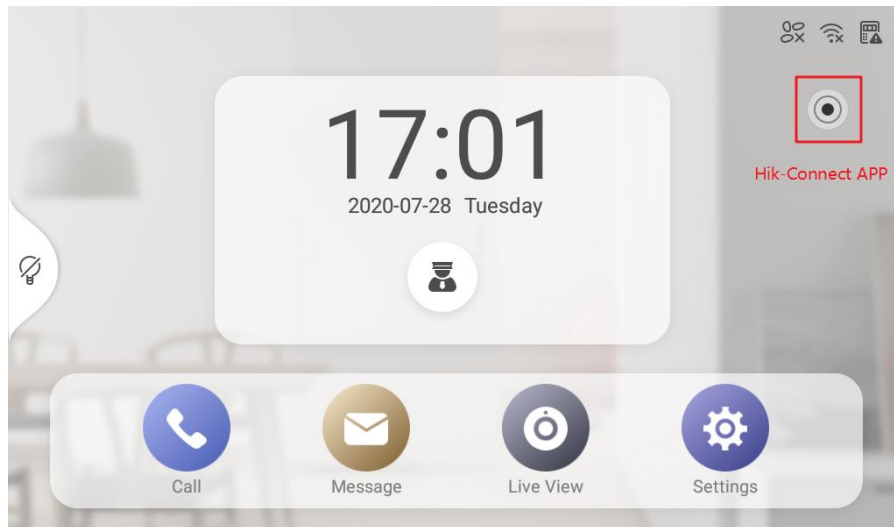


## 5. Tamper alarm function

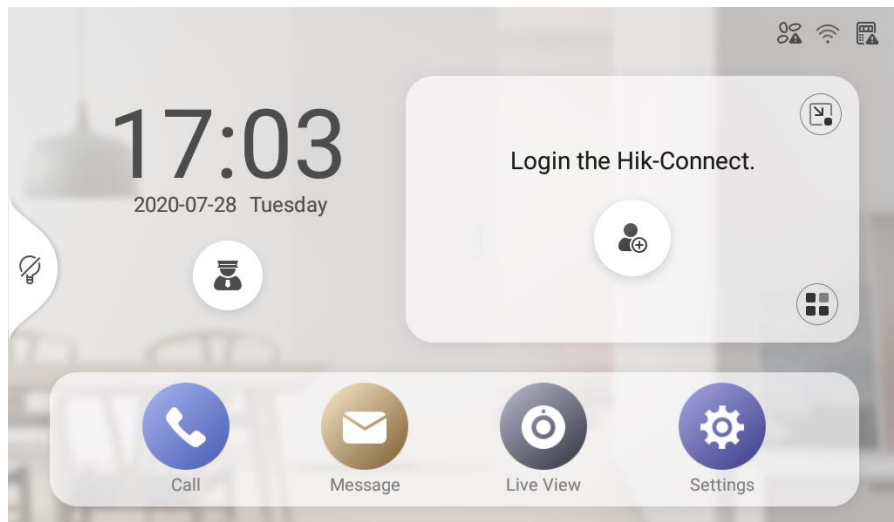


## 6. Local interface login Hik-Connect App function

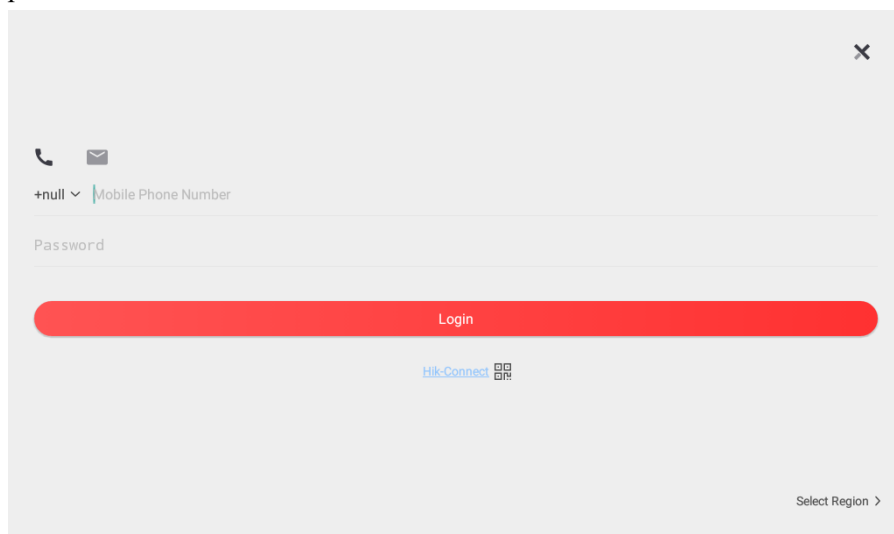
a. Hik-Connect function is hidden in this position by default.



b. If you are not logged in, it will show 'Login the Hik-Connect'.

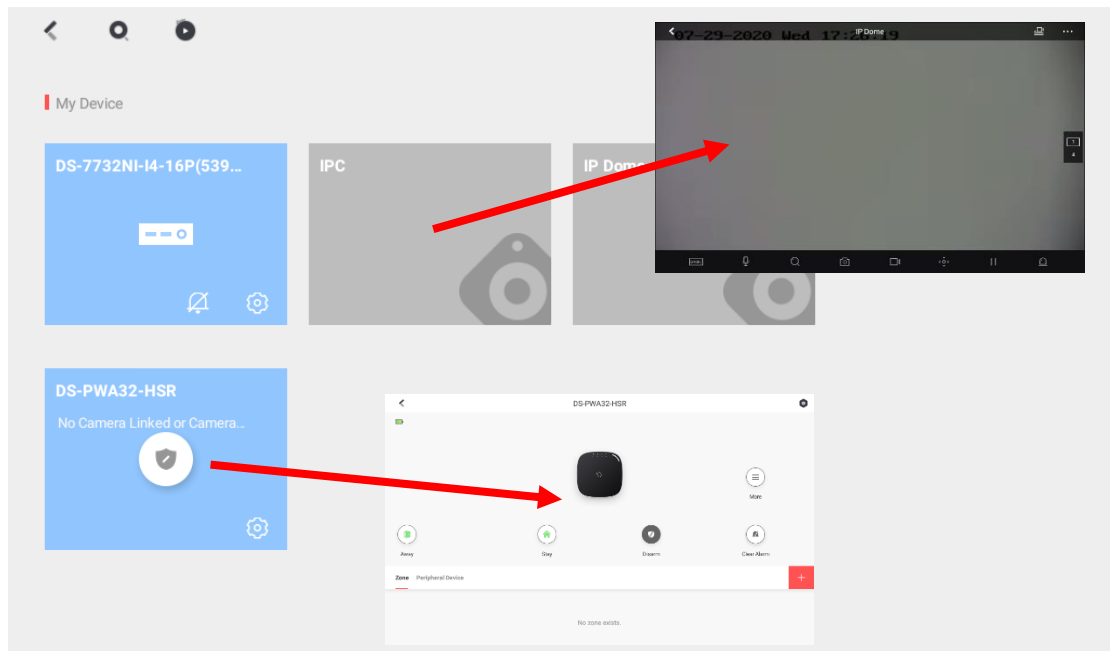


c. Android indoor station does not support online registration, you need to prepare the account password of Hik-Connect in advance.



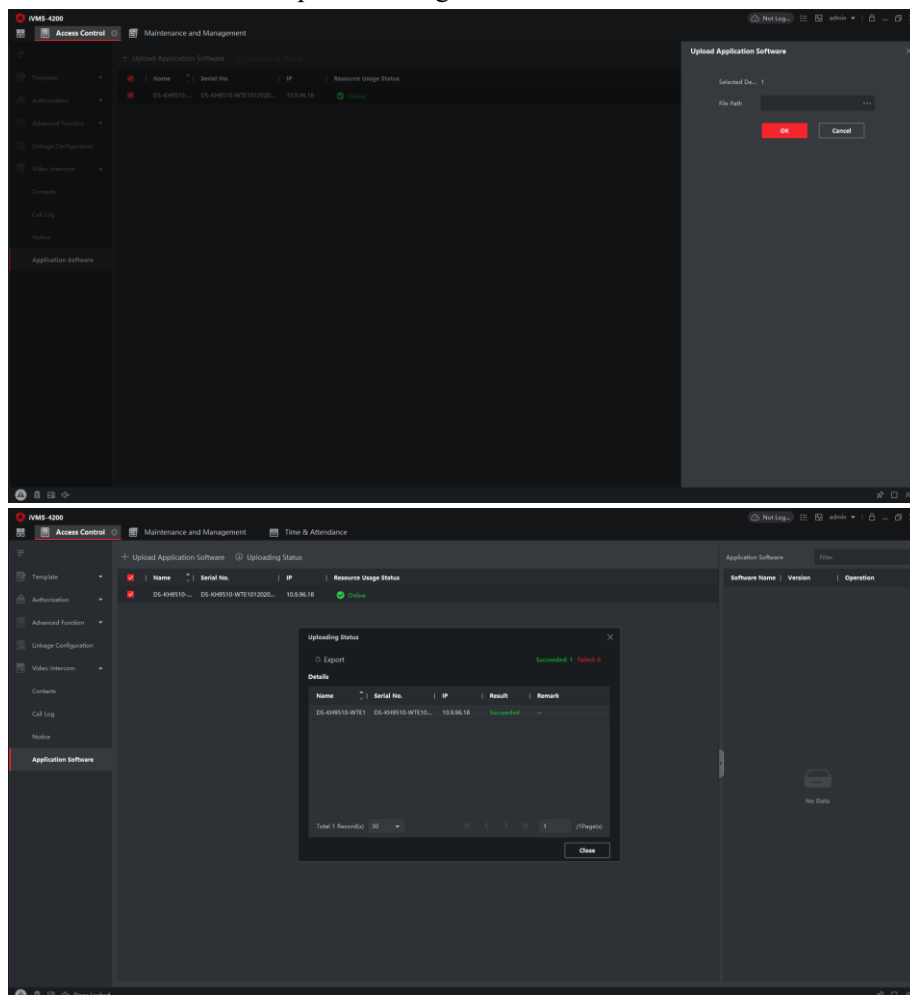


d. Function display: you can arm and disarm the alarm device or preview the playback back-end device, etc.

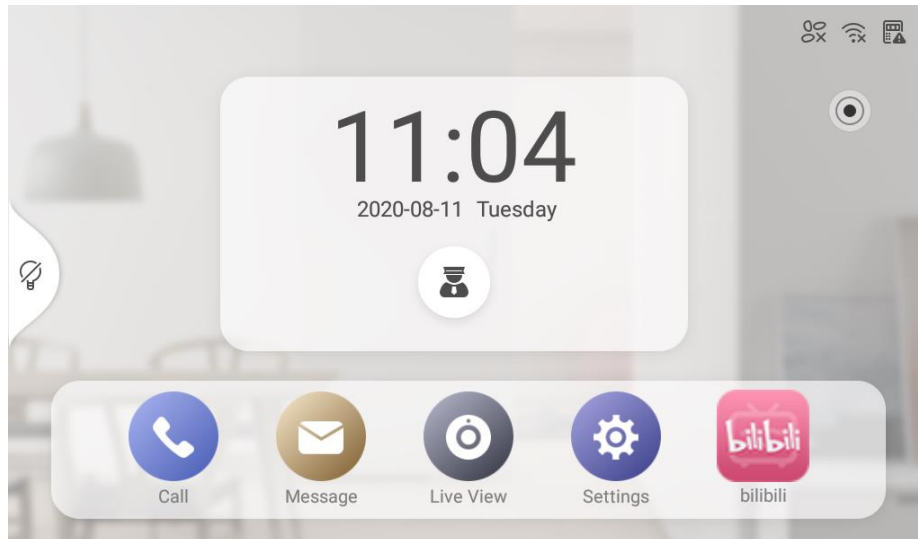


7. The device supports the use of Hikvision certified Android APP

a. Android APP can be imported through iVMS-4200



b. The installed third-party APP will be displayed on the right side of Setting.



**NOTE:**

1. This version does not support DST function
2. Indoor station Local Hik-Connect will not display the video intercom system or receive any push of the video intercom system.
3. The Android indoor station can only be used with the Android indoor station as Main and Indoor Extension.