



EUROPEAN TECHNICAL CENTER

FIRMWARE RELEASE NOTE

IP Video Intercom



DS-KD8102-V



DS-KD8002-VM



DS-KD3002-VM



DS-KV8X02-IM



DS-KV8102-IP/VP



DS-KH630X
DS-KH6210-L




DS-KH830X



DS-KM8301

Firmware Release Notes

Build 1.5.1 190613

Supported Models DS-KD8102-V DS-KD8002-VM DS-KD3002-VM DS-KV8X02-IM DS-KV8102-IP/VP DS-KH830X DS-KH630X DS-KH6210-L DS-KM8301	Firmware Version 	Indoor Station/Master Station V1.5.1 build 190613 H0 Platform Door Station V1.5.1 build 190613 H5 Platform Door Station V1.5.1 build 190613 H2 Platform Door Station V1.5.1 build 190613
	SDK Version	HCNetSDK V6.0.0.25_build20181220
	iVMS4200 Version	V3.1
	Hik-Connect APP	3.7.3.190115

Reason of Upgrade

Added or modified functions, enhance products quality and meet customers' requirements

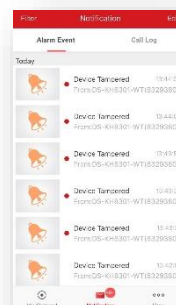
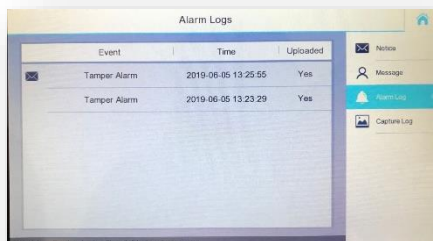
Note:

Version A include 8 languages: English, French, Portuguese, Spanish, German, Italian, Czech, Polish;

Version B include 8 languages: English, Dutch, Croatian, Serbian, Bulgarian, Hungarian, Romanian, Greek.

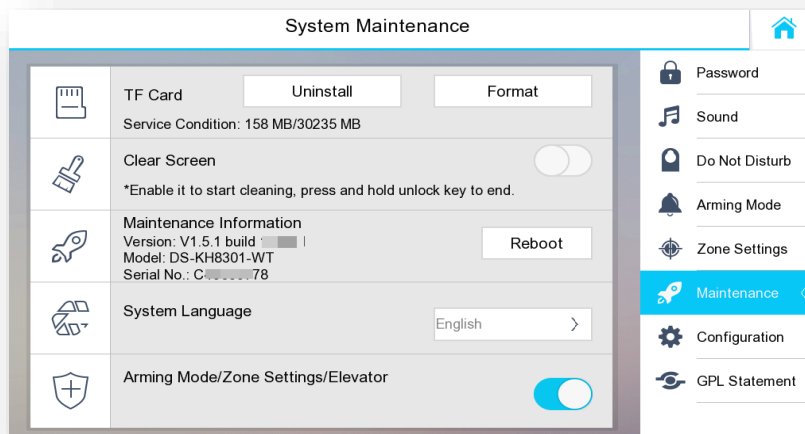
New Features

1. Villa door station will upload tamper alarm to main indoor station (Max 4), master station, iVMS-4200 and Hik-Connect.

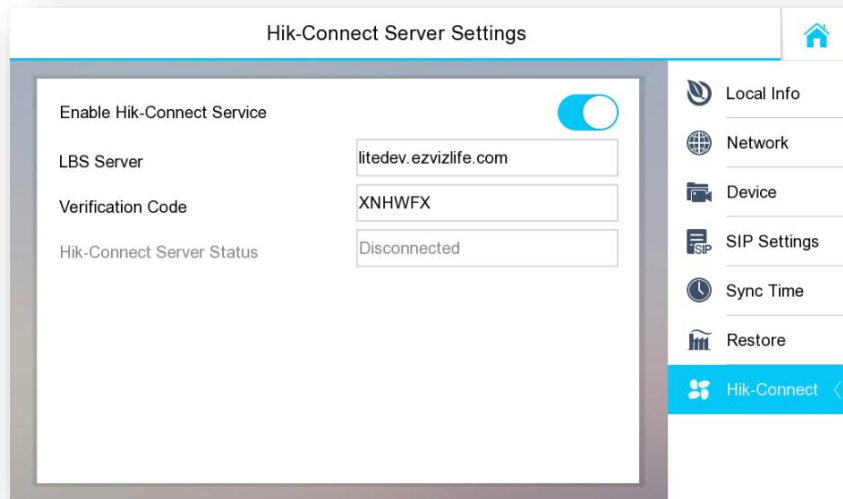


2. The indoor station will display serial number and verification code:

- Serial number will be displayed in "maintenance" of the local UI

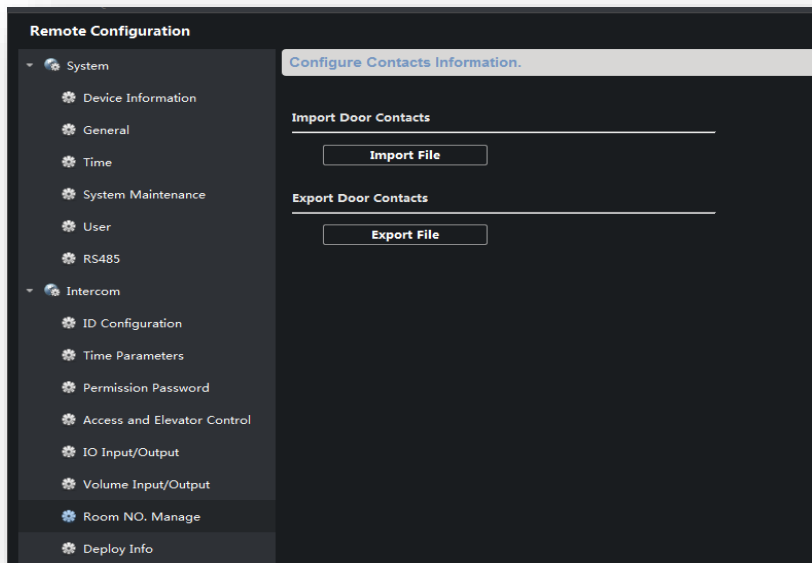


- View and change verification code in Settings->Configuration->Hik-Connect.



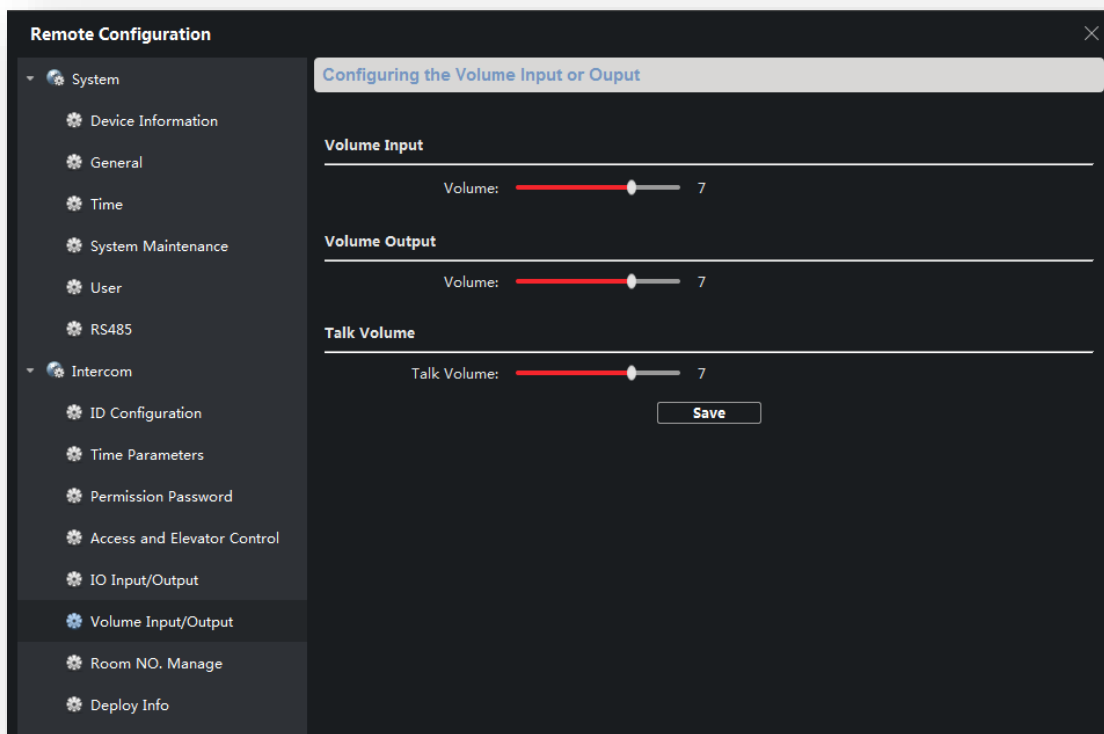
3. Apartment (KD) door stations support residents address list:

- Import the address list to the apartment door station through iVMS-4200. Support up to 500 residents.

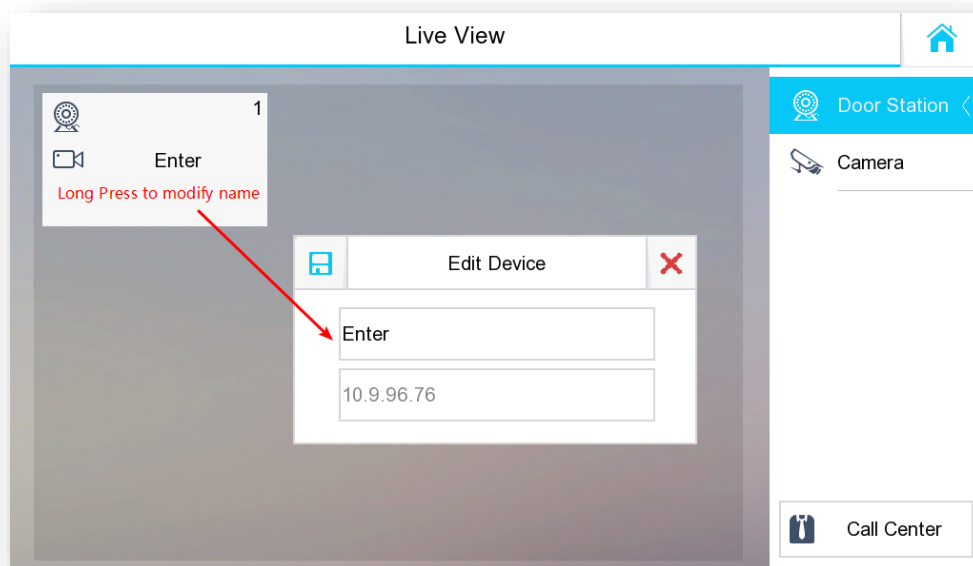


- The apartment door station can view the address list, and the call can be made after selecting the corresponding person;

4. Door station system prompts volume and in call volume can be adjusted separately.

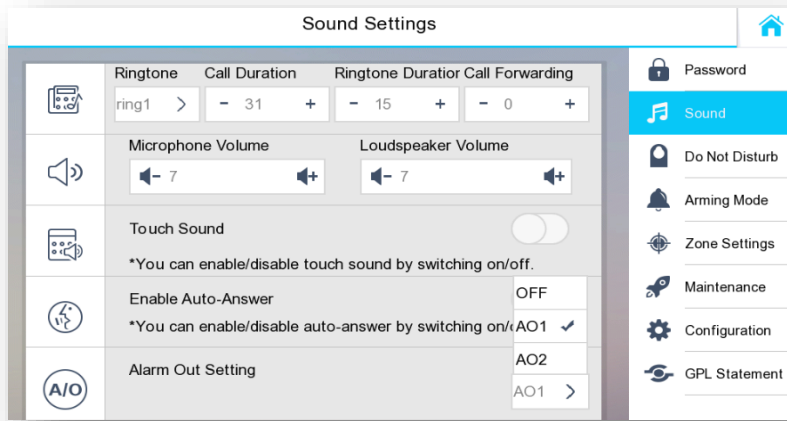


- 5. Support switching to added IP cameras when there is an incoming call
- 6. Support adding extension number in indoor station contact list (egg. 0-1, 0-2 etc.)
- 7. Support changing door station`s display name on in indoor station:



8. Indoor Station will stop ringing immediately and hang up the call, 5 seconds after the unlock button is pressed without answering the call.

9. Indoor station`s alarm outputs can be linked to trigger on incoming call.



Modified Features

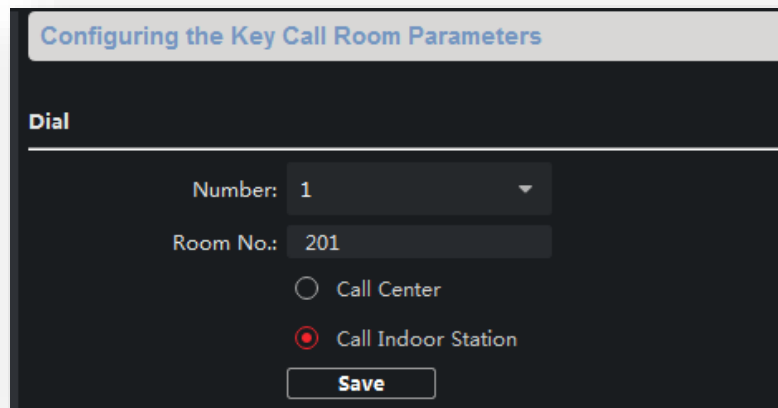
1. The system prompt sound “I am not at home currently, please leave a message is changed to

- Apartment Door Station: Please press the key and leave the message
- Villa Door Station: Please leave the message'

2. The door station and indoor station floor number can be set to 0.

3. Modify the mechanism of the villa door station call master station.

- Removed the difference between long and short press.
- Calling indoor station or master station is configurable.



4. The dial button room number of DS-KV8012 can be changed.

5. The alarm and call elevator module can be hidden.

6. Support configuration of ring and call duration separately

- The ring duration is indoor station ringing time and the call duration is total call waiting time.
- Ring duration: 0~60s, Call duration: 30~60s. Ring duration must be shorter than the call duration, otherwise, the parameter cannot be saved.

7. Public password will still work when door station is in outer door station mode.

Bug Fixes

1. Fixed a bug that when the indoor station is restarted, the imported ringtone will be invalid;
2. Fixed a bug that iVMS-4200 client fails to synchronize time with indoor station;
3. Fixed a bug that some recorders cannot add door stations for recording;
4. Fixed a bug that indoor station is not compatible with new IP cameras (5 & 7 series)

1.5.0 Build 181227

Supported Models DS-KD8102-V DS-KD8002-VM DS-KD3002-VM DS-KV8X02-IM DS-KV8102-IP/VP DS-KH830X DS-KH630X DS-KH6210-L DS-KM8301	Firmware Version	Indoor Station/Master Station V1.5.0 build 181227 H0 Platform Door Station V1.5.0 build 181227 H5 Platform Door Station V1.5.0 build 181227 H2 Platform Door Station V1.5.0 build 181227
	SDK Version	HCNetSDKV5.3.5.10_build20180108_win32
	iVMS4200 Version	V2.8.1.4 build 20181124
	Hik-Connect APP	3.7.1

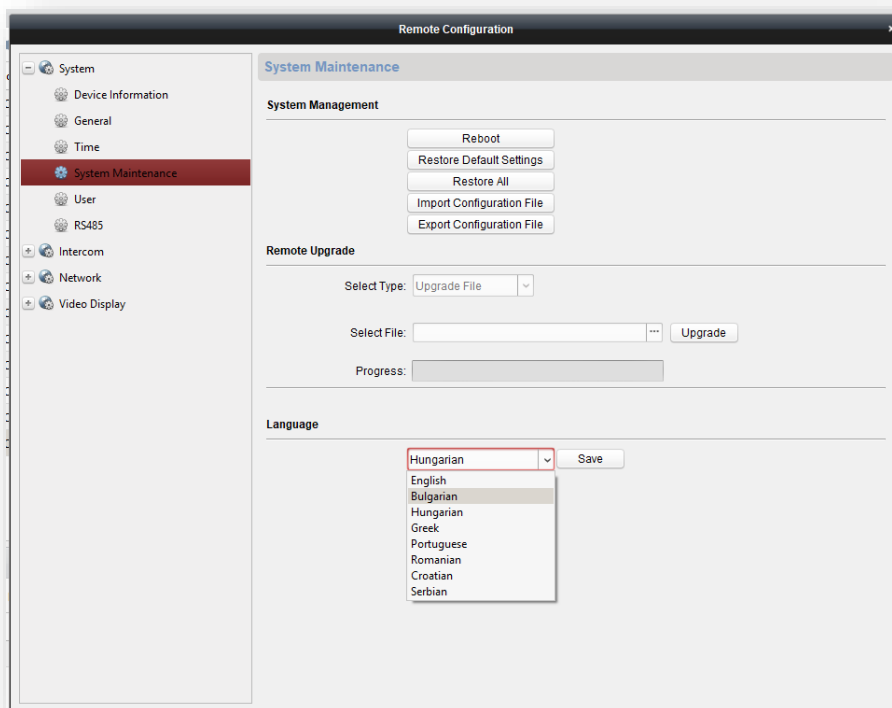
Reason of Upgrade

Added or modified functions, enhance products quality and meet customers' requirements

New Features

- Support for English, Portuguese, Croatian, Serbian, Bulgarian, Hungarian, Romanian and Greek for system and voice prompt languages. This firmware build contains only the mentioned languages!**

Language can be selected in iVMS4200 device remote configuration or in device local interface. More languages to be added later in the next firmware release.



1.5.0 Build 180929

Supported Models DS-KD8102-V DS-KD8002-VM DS-KD3002-VM DS-KV8X02-IM DS-KV8102-IP/VP DS-KH830X DS-KH630X DS-KH6210-L DS-KM8301	Firmware Version	Indoor Station/Master Station V1.5.0 build 181019 H0 Platform Door Station V1.5.0 build 180929 H5 Platform Door Station V1.5.0 build 180929 H2 Platform Door Station V1.5.0 build 180929
	SDK Version	HCNetSDKV5.3.5.10_build20180108_win32
	iVMS4200 Version	V2.7.2.7 build20180919
	Hik-Connect APP	3.6.3

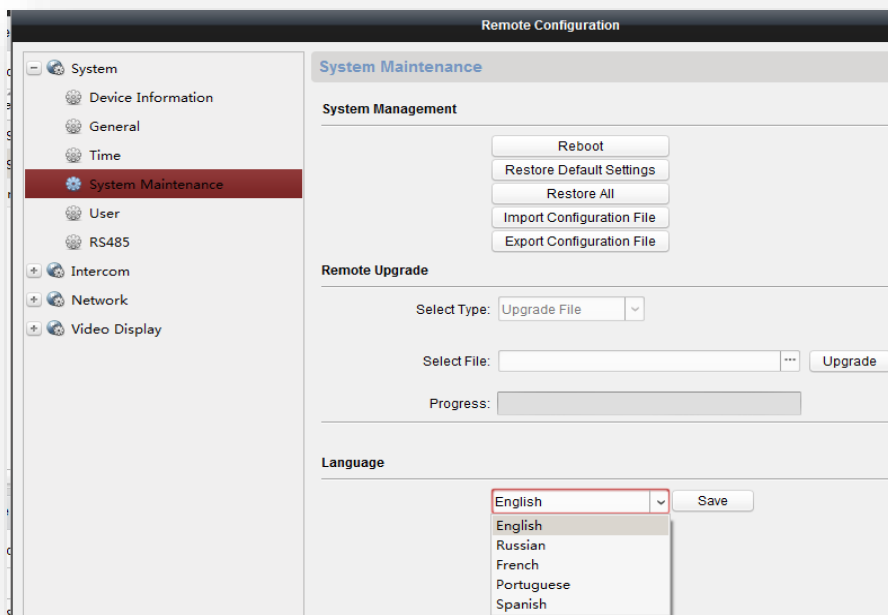
Reason of Upgrade

Added or modified functions, enhance products quality and meet customers' requirements

New Features

1. Added Italian, German, Polish, Czech and Dutch for system and voice prompt languages in addition to the English, French, Portuguese, Russian and Spanish.

Language can be selected in iVMS4200 device remote configuration or in device local interface. More languages to be added later in the next firmware release.



END

Build 180622

Supported Models DS-KD8102-V DS-KD8002-VM DS-KD3002-VM DS-KV8X02-IM DS-KV8102-IP/VP DS-KH830X DS-KH630X DS-KH6210-L DS-KM8301	Firmware Version	Indoor Station/Master Station V1.5.0 build 180622 H0 Platform Door Station V1.5.0 build 180613 H5 Platform Door Station V1.5.0 build 180613 H2 Platform Door Station V1.5.0 build 180623
	SDK Version	HCNetSDKV5.3.5.10_build20180108_win32
	iVMS4200 Version	V2.7.1.9 build20180604
	Hik-Connect APP	3.4.1.0402

Reason of Upgrade

Added or modified functions, enhance products quality and meet customers' requirements

Important Notes! Read before proceeding with this upgrade!

- ❖ This is a baseline firmware that is compatible with baseline iVMS-4200 starting from 2.7.1.9 and newer available on Hikvision website. It can be used simultaneously in one iVMS with CCTV, Access control, Intrusion alarm and other Hikvision sub systems.
- ❖ EU customized firmware 1.4.71 does not support baseline iVMS, it needs a customized version v2.5.2.50. Those two customized SW/FW versions will not be maintained any more so it is highly recommended to upgrade to latest baseline versions.
- ❖ Most of the features available only in 1.4.71 EU customized firmware are implemented in 1.5 baseline firmware except:
 - Residents address book when * button is pressed.
 - Secure door control unit support for higher security (supported only for second relay in 1.5).
 - Serial number and verification password shown on indoor station menu (scan the QR code on the back of the indoor station instead or check it in iVMS. Verification code is bellow the QR code).
 - Trigger indoor station output 1 on incoming call.
 - Send email with captured photo on missed call.
 - Bind and external IP camera to a door station for switch between them in an incoming call.
 - Single button villa door station call button number can be set.
 - Disable call elevator and alarm module.

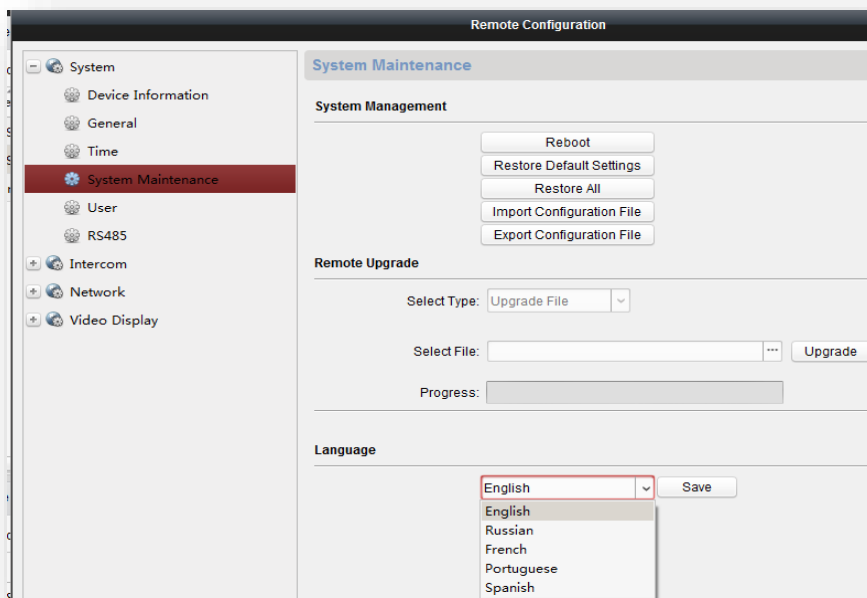
Those will receive better implementation in some of the upcoming firmware versions. If you use those features in a working system it is recommended not to upgrade at the moment.

- ❖ If after upgrade from 1.4.71 EU customized firmware are noticed missing menus in remote configuration the device needs to be defaulted to its factory settings. Devices out of the boxed are shipped with baseline firmware and should not have similar issue.

New Features

1. Support English, French, Portuguese, Russian, Spanish system and voice prompt languages

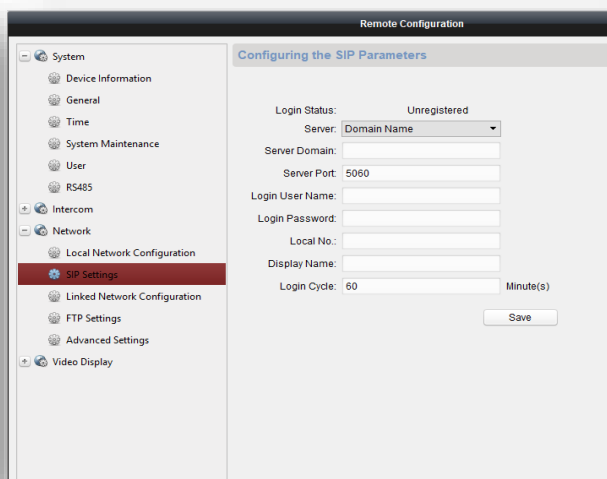
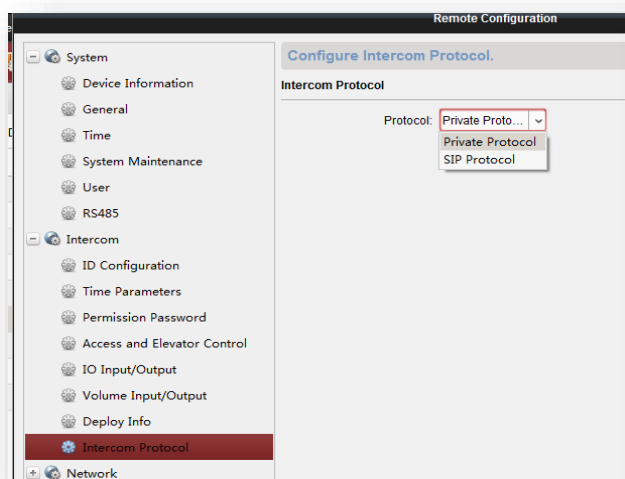
Language can be selected in iVMS4200 device remote configuration or in device local interface. More languages to be added later in the next firmware release.



2. Support for standard SIP 2.0 (VoIP) protocol in LAN environment

The devices can be connected to 3rd party SIP PBX server and used as SIP clients/phones.

- KV villa door station devices are not supported due to hardware resource limitation.
- The SIP protocol will work only in local area network environment. WAN support will be added later.
- Audio compression standard is G.711U, video is H264.
- In standard SIP mode indoor stations do not support extensions and mobile app connection.
- Tested with Yealink T46G (Audio only), Grandstream GXV3275 (audio and video) and Brekeke SIP Server. Not compatible with 3CX.



Change mode to SIP protocol in Remote Configuration->Intercom->Intercom Protocol or via the GUI for indoor stations from the settings menu

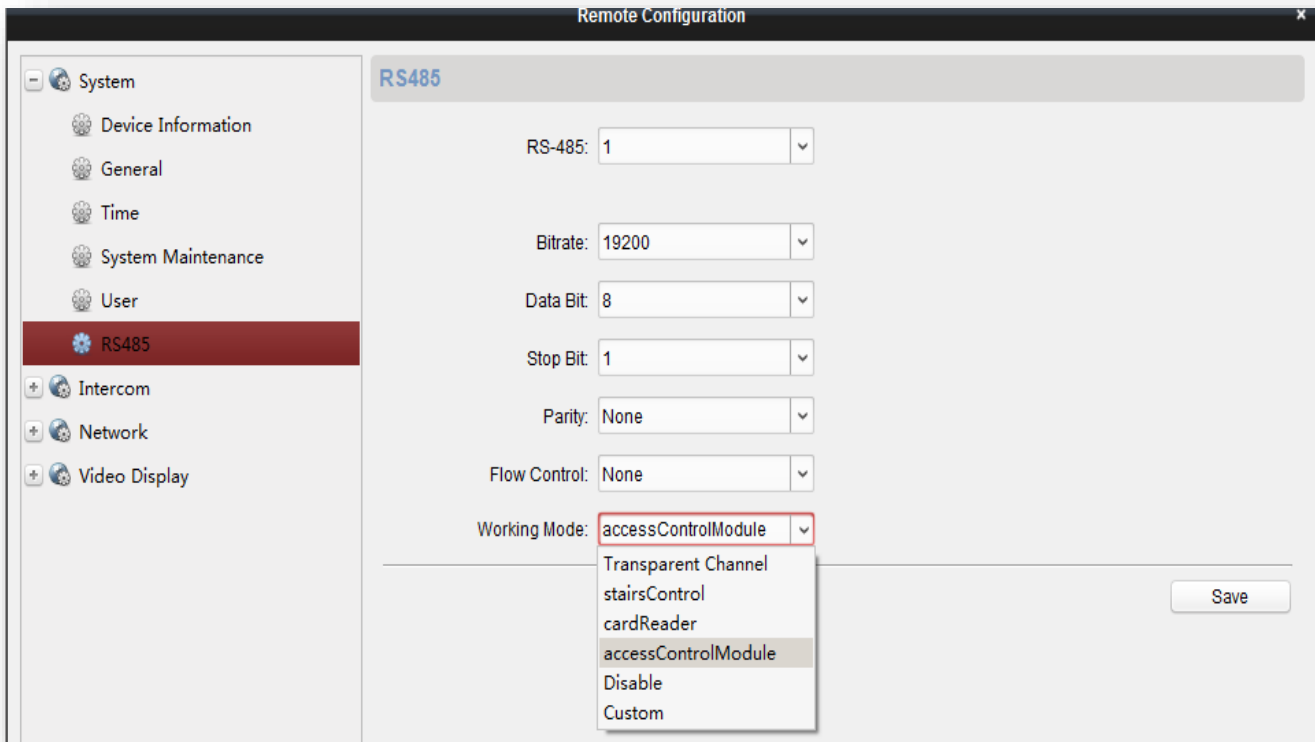
Fill in the SIP extension account settings obtained from the SIP server administrator

3. Support second door relay expansion via DS-K2M060 secure door control module.

Connect the secure door control module to apartment or villa door station via RS-485 to control a second relay for garage door, lights etc. via the indoor station, Hik-Connect or iVMS-4200.



Set the DS-K2M060 secure door control module DIP switch 1 from 0 to 1 and change the door station RS-485 settings according to the below parameters:



- For master station and DS-KH6210-L indoor station, long press the unlock button to unlock lock-2, short press to unlock lock-1.
- The security module doesn't support Wiegand reader in this mode, only exit button.

4. Supported Hik-Connect cloud via Wi-Fi and Ethernet simultaneously.

Indoor stations with both network interfaces can connect to Hik-Connect cloud in the following ways:

- Ethernet for door station and mobile app connection
- Wi-Fi for door station and mobile app connection
- Ethernet for door station communication and Wi-Fi for app communication. If common internet connection is not available in the building the apartment Wi-Fi connection can be used instead.



5. Main indoor station and extensions can call between each other.

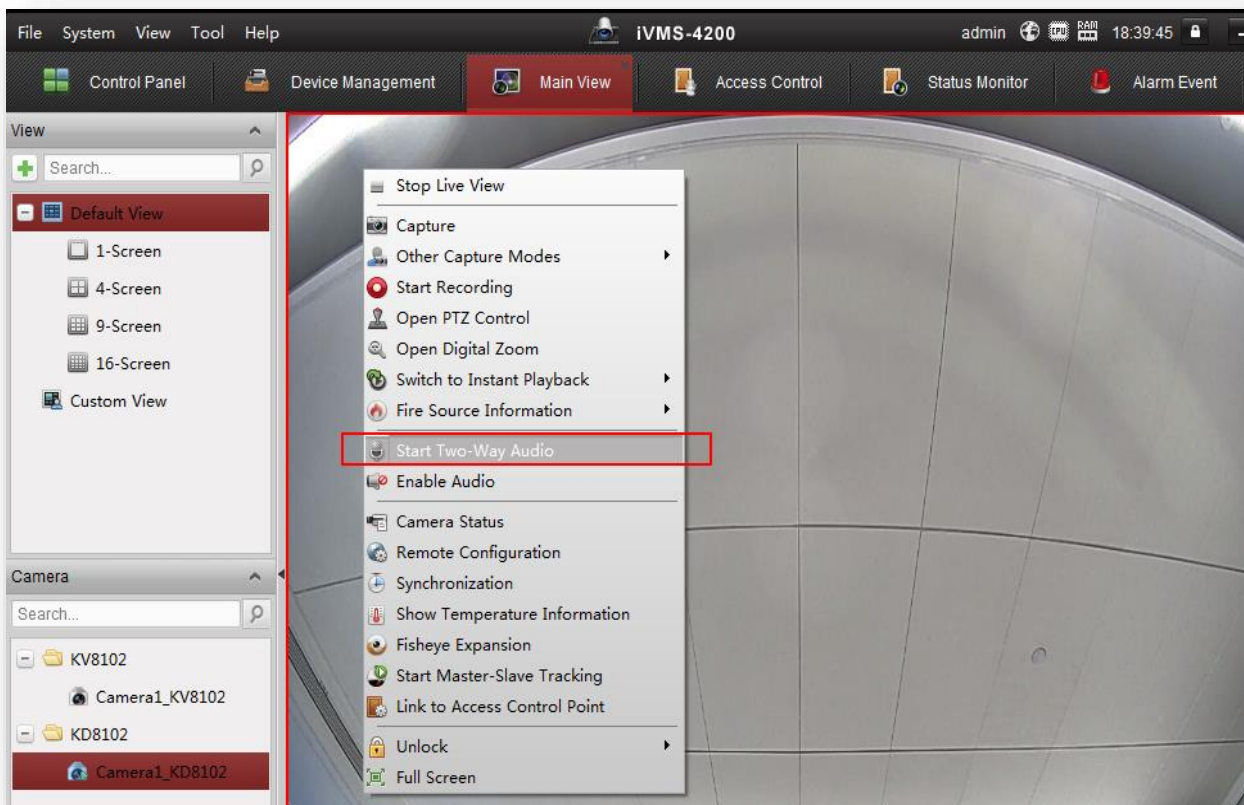
Dialing format is 0-0 (main indoor station) , 0-1 (extension 1) , 0-2 (extension 2) etc. up to 0-5.

6. Enable 2-way audio button in door station live view for talking to visitors.

Not available in standard SIP mode.

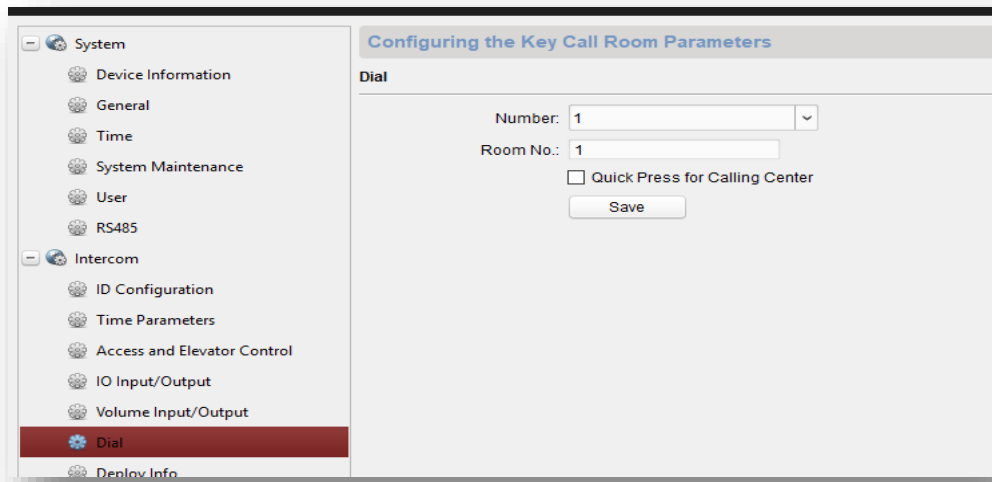
7. Enable 2-way audio communication with door station in ivms-4200 live view.

When enabled, 2-way audio between door station and indoor station is not recommended.



8. Villa door stations can call iVMS-4200.

By default short pressing a call button will dial the indoor station and long press will call iVMS-4200 (if master station and SIP server IP's in Linked Network Configurations are set to 0.0.0.0)



The short and long press can be reverted per button when "Quick Press for Calling Center" option is enabled. An example is when only 3 buttons are used on 4 buttons door station the 4th can be used to call iVMS or master station by short pressing the button.

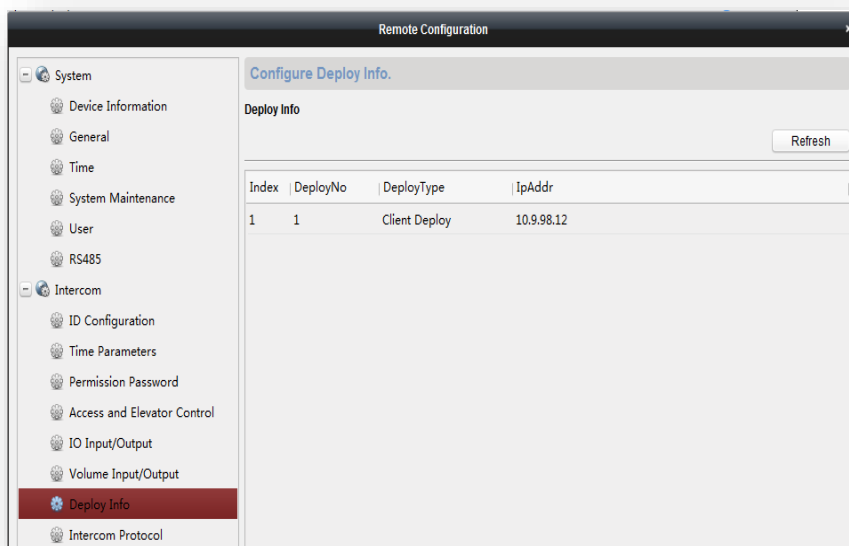
9. Added new event "Illegal Card Event"

Swiping an unauthorized card on a door station reader will output an event in iVMS containing the card number. The card can be enrolled manually to the system via the number afterwards.

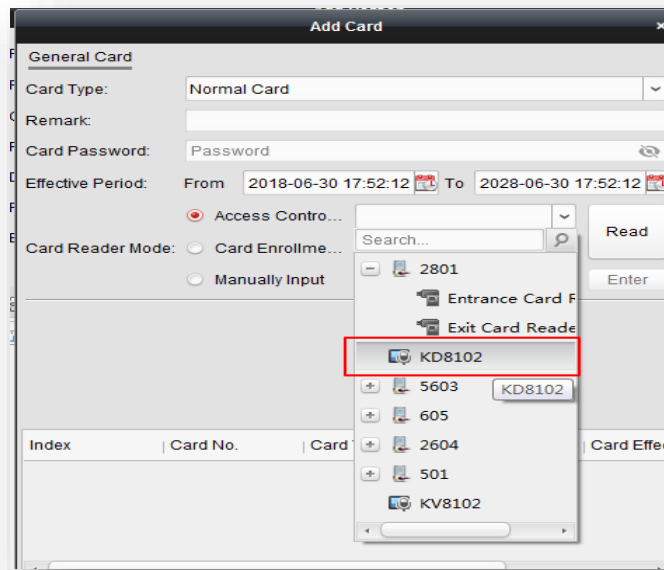
In...	Alarm Time	Alarm Source	Alarm Details	Alarm Content	Live View	Send E...	Video ...
99	2018-06-30 17:45:24	Door Station:KD8102 Came...	Trigger Camera: Camera1_10.9...	Video Intercom Event			
98	2018-06-30 17:45:15	Door Station:KD8102	Card Number: 4043496675	Illegal Card Event			

10. Door and indoor stations can be armed/connected by multiple channels (maximum 8).

Alarm information will be uploaded to every arming channel, for example iVMS4200 and NVR. Arming channel list can be checked in iVMS-4200 in remote configuration>intercom>arm information



11. Enroll card in iVMS using the door station reader.

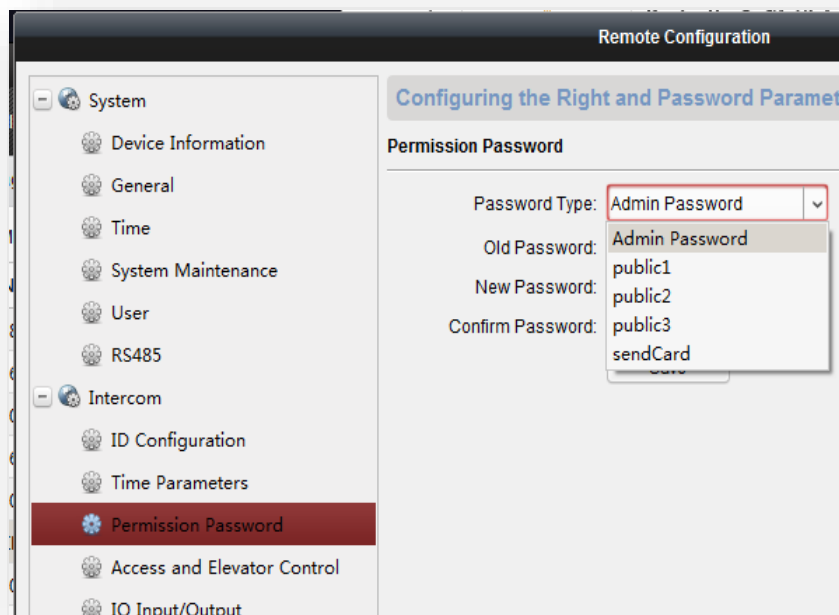


12. Enroll cards via password using the apartment door station display.

Login to the door station settings menu by holding the * and # and then navigate to *issue card*->*2.Issue card via password*, enter the card issue password and swipe the new cards. The password can be changed via iVMS-4200 in Remote Configuration->Intercom->Permission Passwords->Password Type->SendCard.

13. Set local unlocking password for apartment door stations.

Up to 3 public passwords can be set per door station for visitors unlocking. The password should be 6 digits and entered in the following format #+password+#



Password can be changed in door station Remote Configuration->Intercom->Permissions password->Password type

14. Power button to turn off indoor station screen.

15. Support domain name for NTP time adjustment.

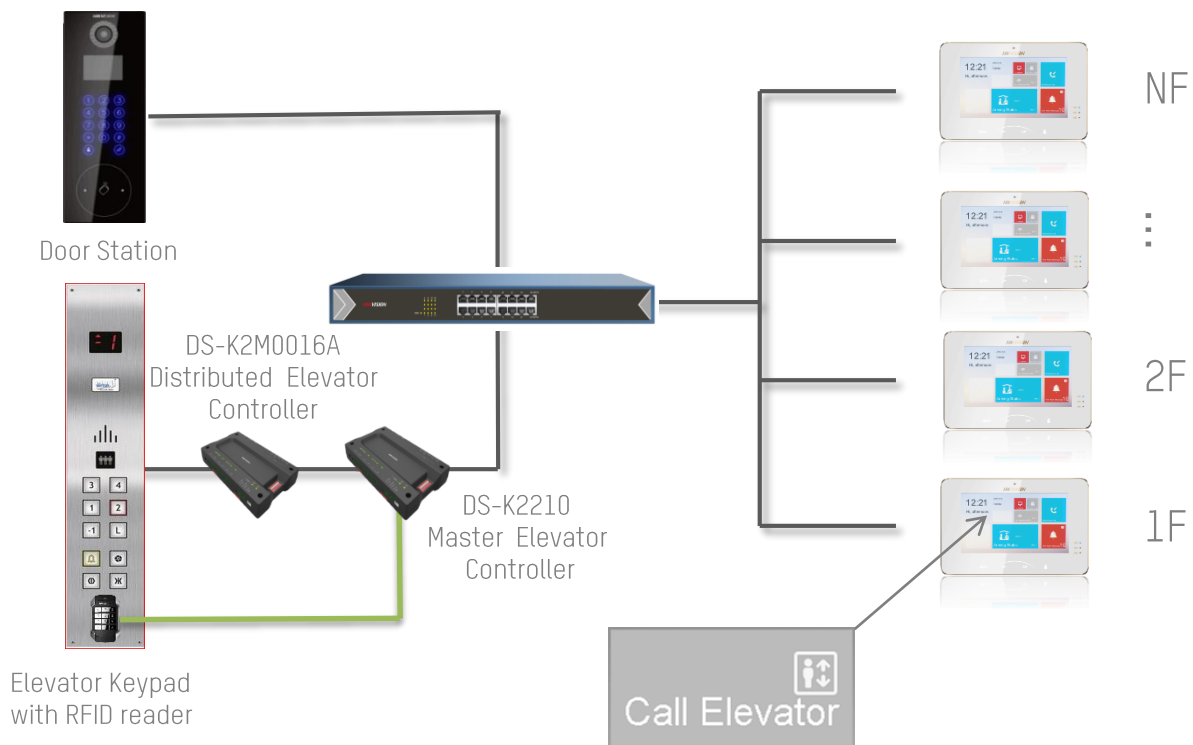
16. "Doorbell" zone alarm type can be set for any alarm input for Doorbell button connection.

When short-circuited a ding dong sound will be played on the indoor station

17. Supports DS-K2210 distributed elevator controller integration.

For the details on the integration refer to the available How-to on the EU portal.

- Elevator access controller allows residents and visitors to go only to the floor they are granted access to using RFID card.
- After a resident unlocks the door station to let a visitor in, the elevator will automatically go to door station floor and will release only the floor button of the indoor station that unlocked the door
- When visitor has to leave, the residents can press "call elevator button" in the indoor station which will call the lift cabin on the indoor station floor and then will release only the door station floor button. This way visitor can leave effortlessly.



18. 2 and 4 button villa door station can be used in door phone mode.

In case there are gates between stairs on building floors a door station that will be monitored and controlled only from a few apartments might be needed.

19. Simplified door phone adding mode.

- Change the door station mode to door phone.
- Add the door phone in indoor station`s linked network devices.

Configuring the Network and Sip Parameters

Linked Network Configuration

Device Type: Indoor Station

Master Station IP Address: 0.0.0.0

(Main) Door Station IP Address: 192.168.1.21

SIP Server IP Address: 0.0.0.0

Security Control Panel IP Address: 0.0.0.0

Security Control Panel Port No.: 0

Doorphone IP Address: 192.168.1.22

Main Door Station Type: Main Door Station (D ...)

Save

If additional door stations in door phone mode needs to be added to the same indoor station, the procedure is the same like adding main and sub door stations. Change the device mode to door phone and the serial number from 0 to 1 (1 to 8 is possible) on the additional door phone and after rebooting type the main door phone IP address in the sub door phone 1 linked network configuration.

20. Get cards and users from door stations.

In case user database in iVMS-4200 is lost it can be obtained partly from the door station.

Person | Export Person | Get Person | Add Person in Batch | Issue Card in Batch

Quantity	Card No.	Fingerprint Qua...	Fac
	3774653041	0	1
	54545445,64457...	0	0
		0	0
		0	0
		0	0

Select Device

Nickname	IP
Apartment Door Station	192.168.1.21
Villa Door Station	192.168.1.22
TA801	192.168.1.35
12 Volt Doorbell	192.168.1.195
2802	192.168.1.52
T802	192.168.1.51
T803	192.168.1.53
8112	192.168.1.23

Note: If the person has already been added to other department, he/she will be deleted from the other department.

OK Cancel

Modified Features

- Indoor Station room number supports random number in the range of 1 ~9999.**
Floor number that is needed for elevator control has been separated from room number.

Device Type: Indoor Station

Room No.: 101

Floor No.: 1 room num range is 1-9999

Save

- Activation password can be maximum 16 bits.
- Improved video stream stability in Hik-Connect, supported P2P streaming.
- KD8 series door station supports 10000 cards when in door station mode and 50000 cards when in outer door station mode. KD3002 door station supports 10000 cards when it is in door station mode and 10000 cards in outer door station mode. KV series villa station supports 2500 cards.
- Main indoor station and extension layout is the same.

Bug Fixes

- Fixed a bug where if a door station is connected to indoor station with and one room number and after that is replaced by another indoor station with the same IP the calling failed error was shown.
- Multiple bug fixes and performance optimizations.

END

Customer Impact and Recommended Action

This new firmware upgrade is to improve product performance, and will take effect automatically after upgrading from previous versions. We'd like to inform you for the above changes. Also, we are sorry for any possible inconvenience of use-habit changes caused by this action.

For questions or concerns, please contact our local technical support team.



Note:

Hikvision has all rights to alter, modify and cancel this notice.

Hikvision doesn't give any guarantee for old models' stock.

Hikvision is not liable for any typing or printing errors.

For special model's change details, please contact our local technical support team.

Hikvision Digital Technology CO., Ltd.
No. 555 Qianmo Road, Binjiang District, Hangzhou
310052, China
Tel: +86-571-8807-5998
FAX: +86-571-8993-5635