

Indoor Station Firmware Release Note (2024-11-01)

Device Model	DS-KH6320-LE1(B), DS-KH6320-LE1(B)/White, DS-KH6320-TE1(B), DS-KH6320-WTE1(B), DS-KH6350-WTE1, DS-KH6350-TE1, DS-KH6351-TE1, DS-KH6351-WTE1, DS-KH6360-TE1, DS-KH6360-WTE1,
Firmware Version	V2.2.96_build241028

Note: if the device firmware is earlier than V2.2.92_build241008, please upgrade to V2.2.92 first, and then upgrade it newer version, or the upgrade will be failed.

V2.2.92_build241008 firmware download link:

[https://drive.ticklink.com/hcs/controller/hik-manage/fileDownload?link=rd5ybkxE&](https://drive.ticklink.com/hcs/controller/hik-manage/fileDownload?link=rd5ybkxE&password:F0u8)

password: F0u8

Modified Features

1. Adjust the audio gain adjustment and optimized the anti-echo effect

Indoor Station Firmware V2.2.92_build241008 Release Note (2024-10-25)

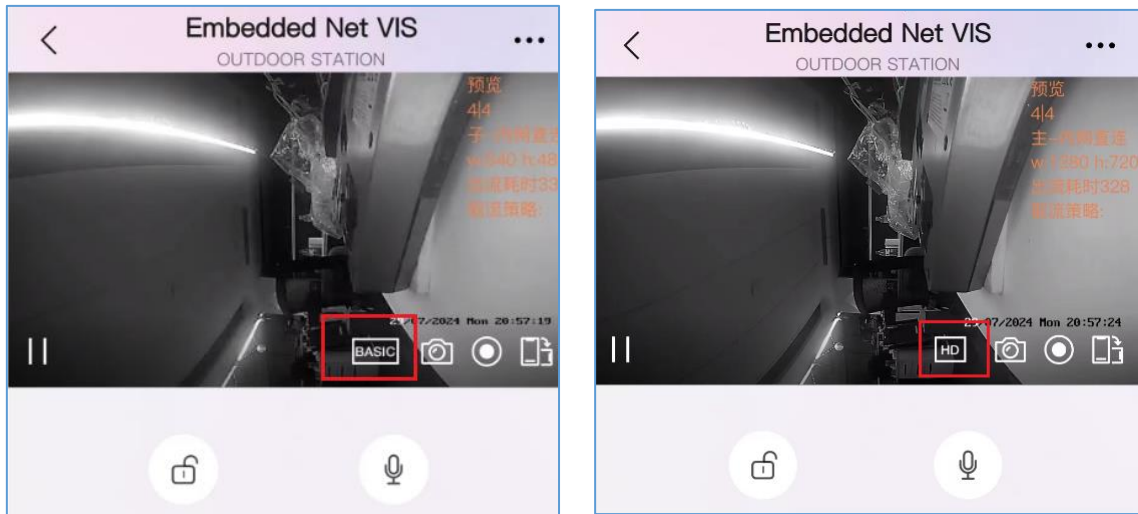
Device Model	DS-KH6320-LE1(B), DS-KH6320-LE1(B)/White, DS-KH6320-TE1(B), DS-KH6320-WTE1(B), DS-KH6350-WTE1, DS-KH6350-TE1, DS-KH6351-TE1, DS-KH6351-WTE1, DS-KH6360-TE1, DS-KH6360-WTE1,
Firmware Version	V2.2.92_build241008

Note: The old version can be upgraded to this version, but the old version cannot be upgraded directly to the version after V2.2.92_build241008, please upgrade to V2.2.92 first, and then upgrade it newer version.

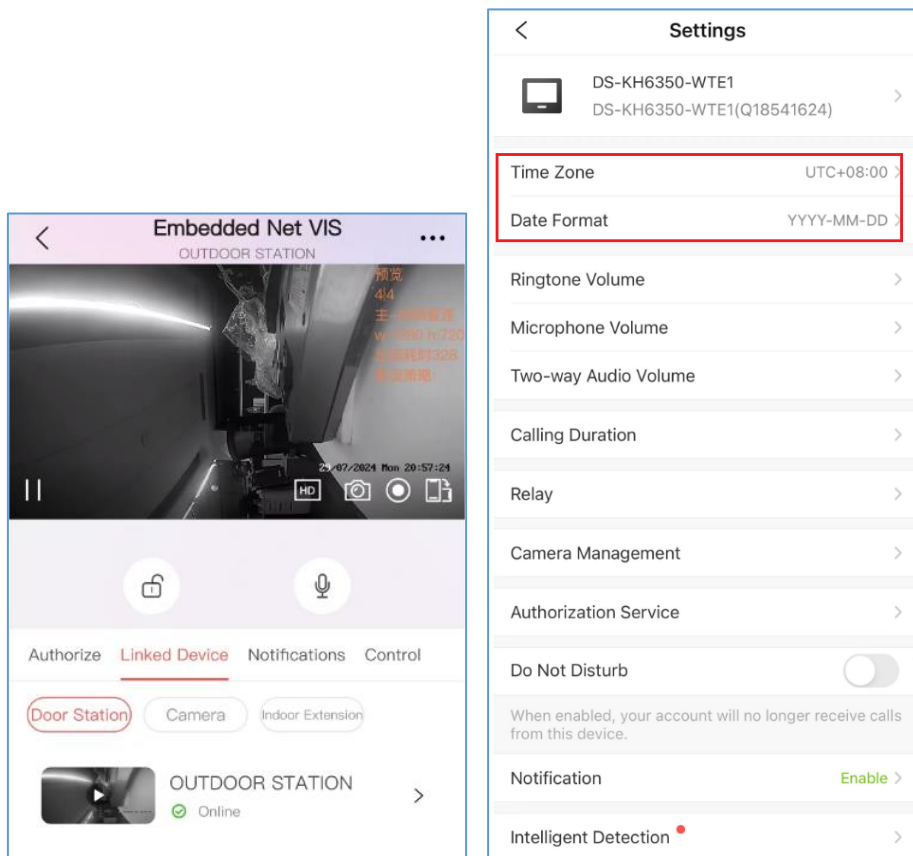
New Features

1. Optimize the audio quality with NetEQ algorithm and add 16KHz sampling rate (only support 8KHz before), supports more audio formats (auto-negotiation), including G.711u, G.711a, G.722.1
2. Support switching between main and sub stream (HD and Basic) when live view the door station

from hik-connect app

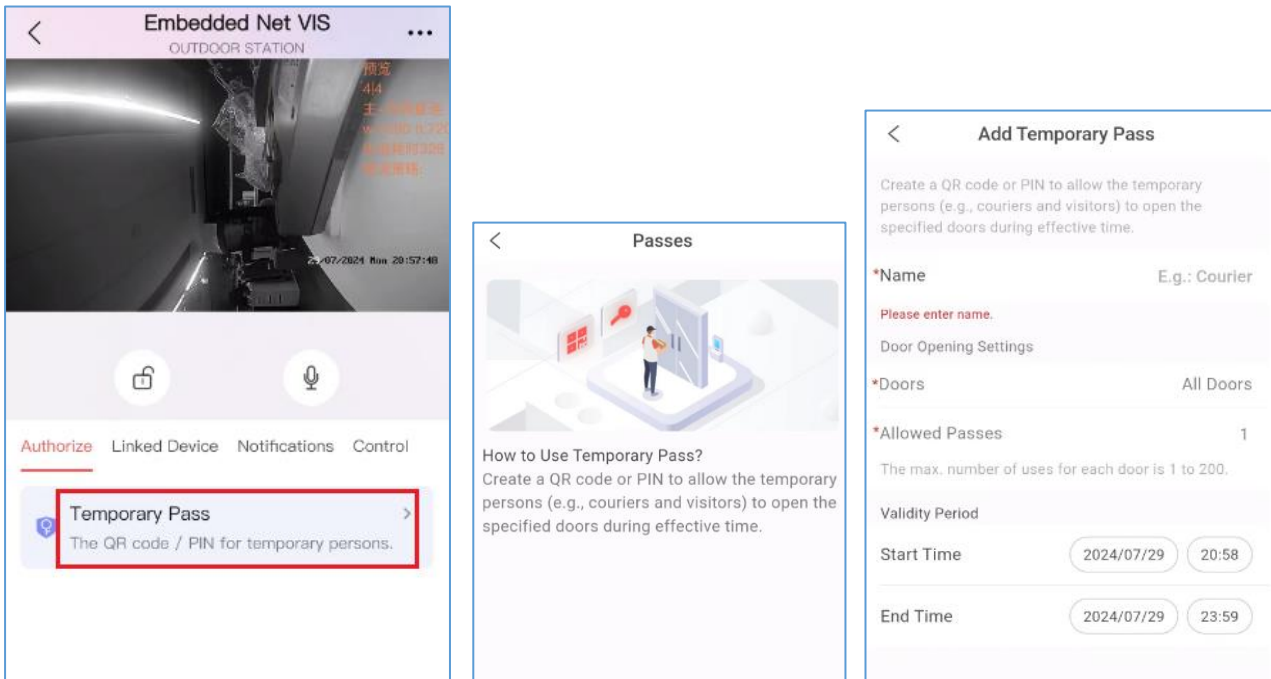


3. Synchronize the door station and camera name and display on the Hik-Connect app.
4. Support display doorphone, camera and indoor extension list, support time zone and date format setting from Hik-Connect app

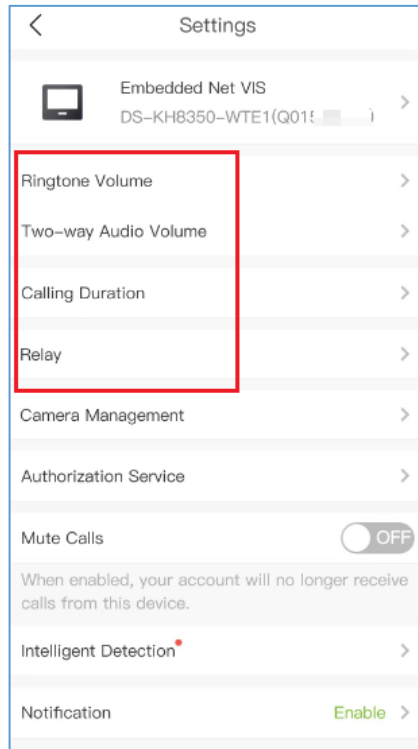


5. Support adding temporary visitor QR and PIN on Hik-Connect and apply to the door station.

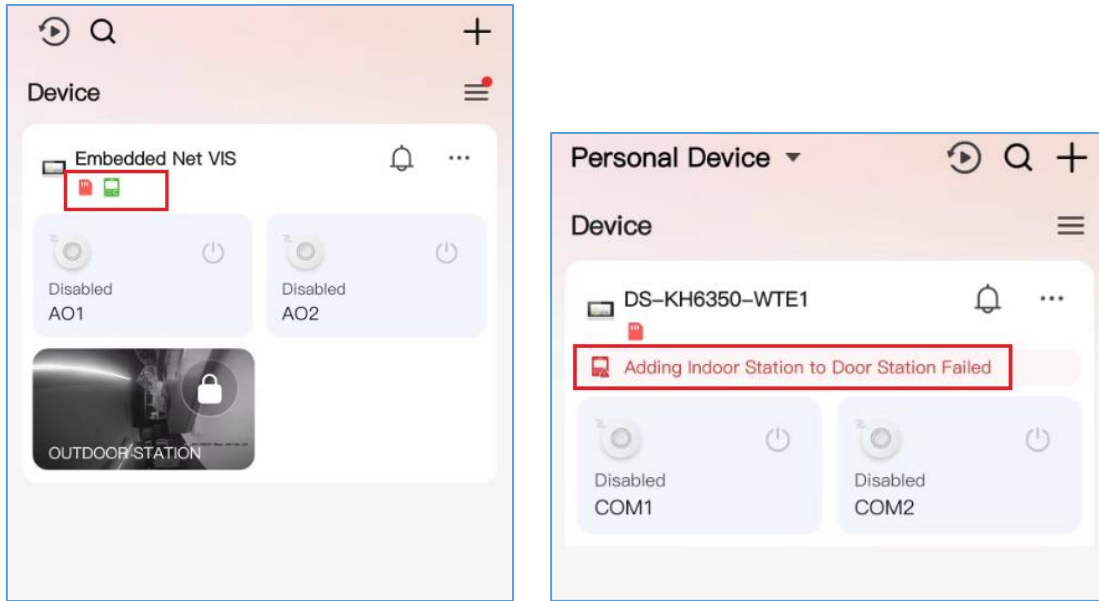
Note: This function should be supported by the door station at the same time.



6. Configure the ringtone/intercom audio volume, call duration and TF card parameters from Hik-Connect

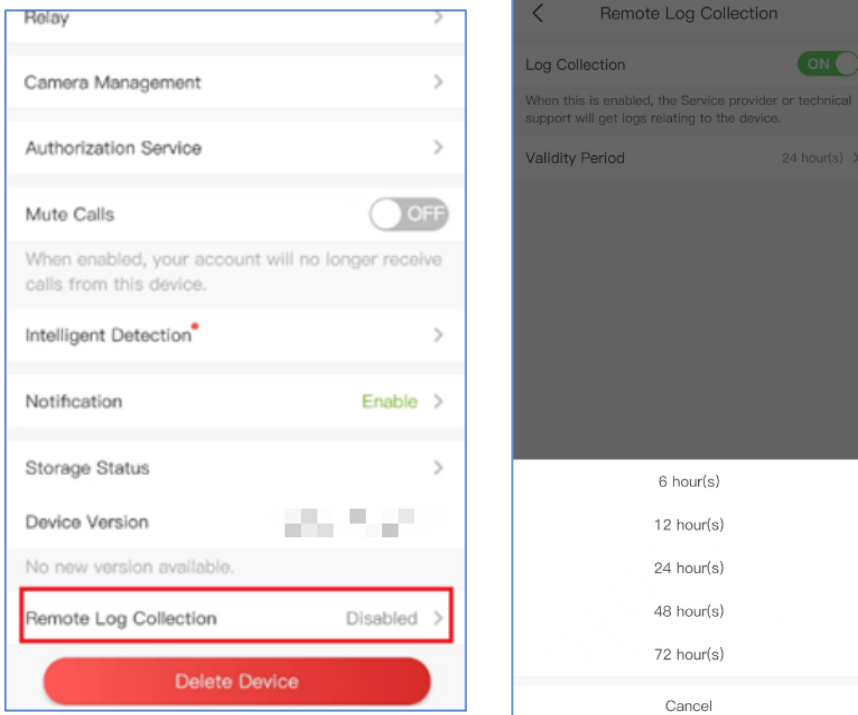


7. Show status on Hik-Connect main interface (including alarm output relay, door station registration, TF card and Wi-Fi status)



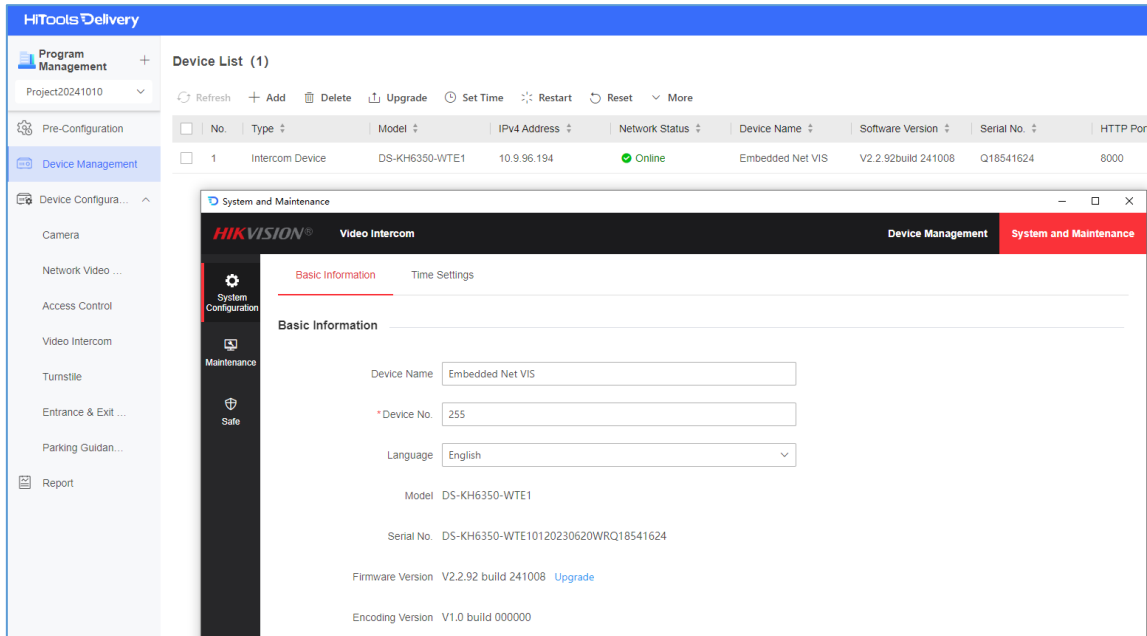
8. Support collecting the device log from Hik-Connect cloud after the end user enable the authorization service from App, within the valid duration, technical support can collect the device log.

Note: Please send the issue video and device SN to technical support for better issue understanding.



- Compatible with HiTools Delivery, and open remote configuration to make some basic settings.

Download link: <https://www.hikvision.com/en/support/tools/hitools/c17f0143d2c781a3e3/>



Modified Features

- Optimize some local UI display issues
- Optimize the some error prompts after wrong password input.

Indoor Station Firmware V2.2.24_build240115 Release Note (2024-01-31)

Device Model	DS-KH6320-LE1(B), DS-KH6320-LE1(B)/White, DS-KH6320-TE1(B), DS-KH6320-WTE1(B), DS-KH6350-WTE1, DS-KH6350-TE1, DS-KH6351-TE1, DS-KH6351-WTE1, DS-KH6360-TE1, DS-KH6360-WTE1,
Firmware Version	V2.2.24_build240115

Reason of Upgrade

Fix bugs, enhance products quality and meet customers' requirements.

Modified Features

1. Optimize translation of DND(Do Not Disturb) function in local GUI, change from indoor extension to indoor station.
2. Remove the prompt including "Hik-Connect" in NEU fw.
3. Fixed: When using some brand standard SIP servers, there is no video when the door station calls the indoor station through standard SIP
4. Fixed the issue that there is a small probability that the wifi hotspot cannot be scanned
5. Fixed the issue that when the outer door station called the indoor station, there was no lock button or there was a lock button but the unlocking failed in hik-connect app.
6. Optimized the logic of associating the wizard with activated door station
7. Modify the ringback tone file of the indoor station

Indoor Station Firmware V2.2.20_build230601**Release Note (2023-06-06)**

Device Model	DS-KH6320-LE1(B), DS-KH6320-LE1(B)/White, DS-KH6320-TE1(B), DS-KH6320-WTE1(B), DS-KH6350-WTE1, DS-KH6350-TE1, DS-KH6351-TE1, DS-KH6351-WTE1, DS-KH6360-TE1, DS-KH6360-WTE1,
Firmware Version	V2.2.20_build230601
iVMS-4200	V3.9.1.4 or later

Reason of Upgrade

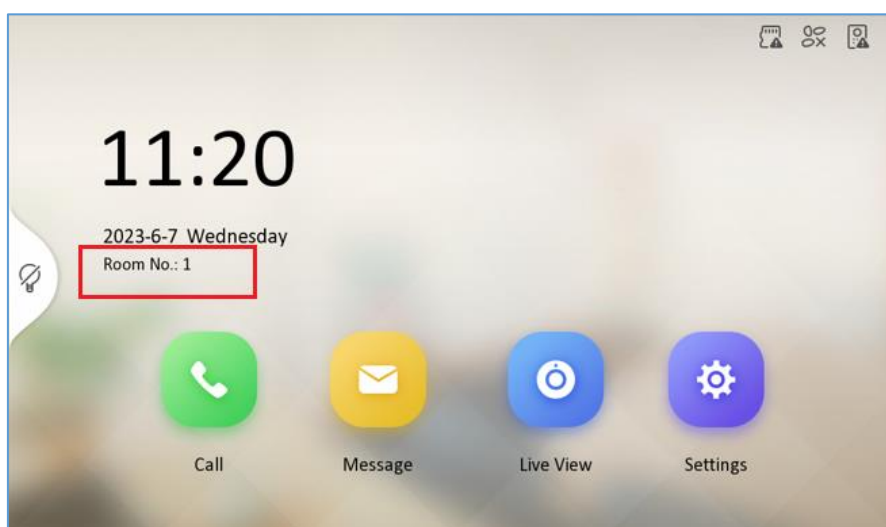
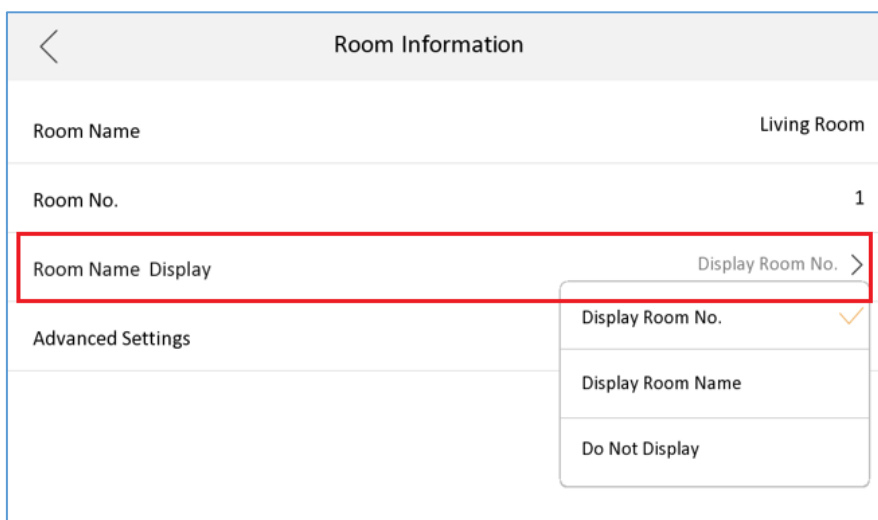
Add new feature, fix bugs, enhance products quality and meet customers' requirements.

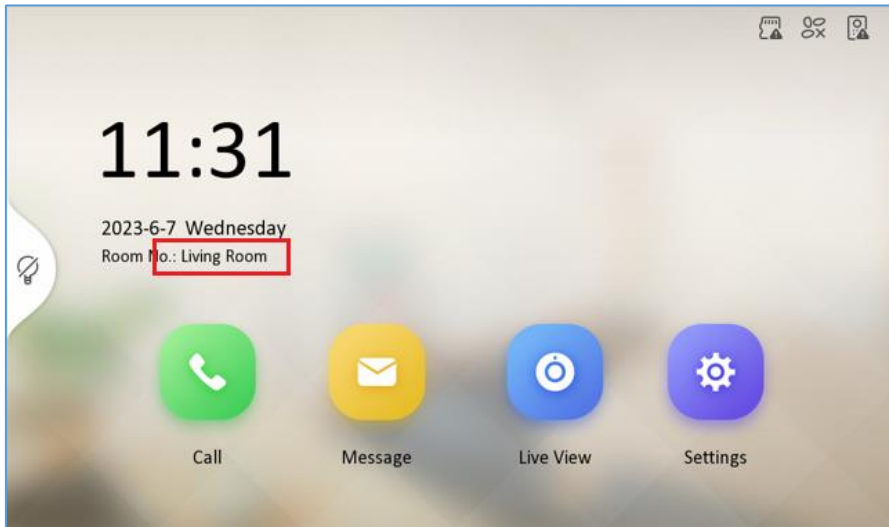
New Features

8. support 35 languages

English	Deutsch	Nederland	繁體中文	Tiếng Việt	Português
Русский	Italiano	Português (Brasil)	Eesti	Hrvatski	Lietuvių
български	Česky	Español	Dansk	Slovenščina	Latviešu
Magyar	Slovenčina	עברית	Svenska	Srpski	МОНГОЛ
Ελληνικά	Français	România	Norsk	العربية	O'zbekcha
	Polski	Türkçe	Suomi	УКРАЇНА	Қазақша

9. support self-defined indoor station name on the screen, there are 3 option, display room No., Room name or do not display, by default it's room No.





10. support 16 indoor extension (it was 5 before)

11. support modify main door station name from hik-connect (sub door station name can be changed from hik-connect local, but it will not be applied to device, this function will be supported in the future)

Modified Features

1. Optimize the IP allocation logic in the wizard, when the indoor station choose to use the default IP 192.0.0.64, it will be conflict with other indoor station, so it will automatically modify the IP address to 192.0.0.X which is not conflict with other devices
2. Move floor number parameter to advanced settings menu

Indoor Station Firmware V2.2.8_build230219 Release Note (2023-03-02)

Device Model	DS-KH6320-LE1(B), DS-KH6320-LE1(B)/White, DS-KH6320-TE1(B), DS-KH6320-WTE1(B), DS-KH6350-WTE1, DS-KH6350-TE1, DS-KH6351-TE1, DS-KH6351-WTE1
Firmware Version	V2.2.8_build230219
iVMS-4200	V3.8.3.1 or later

Reason of Upgrade

Fix bugs, enhance products quality and meet customers' requirements.

Modified Features

3. Fix the occasional connection failure between indoor station and indoor extension
4. Enhance the stability of Wi-Fi connection
5. Fix the audio issue between indoor extension and outer door station
6. Fixed the problem that when the indoor station and the door station are registered to Asterisk standard SIP server, there is no unlock icon when the door station calls the indoor station
7. Increase the indoor station intercom voice volume.

Indoor Station Firmware V2.2.2_build221223 Release Note (2022-12-30)

Device Model	DS-KH6320-LE1(B), DS-KH6320-LE1(B)/White, DS-KH6320-TE1(B), DS-KH6320-WTE1(B), DS-KH6350-WTE1, DS-KH6350-TE1, DS-KH6351-TE1, DS-KH6351-WTE1
Firmware Version	V2.2.2_build221223
iVMS-4200	V3.8.3.1 or later

Recommended Firmware

It is recommended to use the following devices and version together, because they can cooperate and work normally after the docking test.

Device type	Test model	Version
Door station	KD8003	Protocol 1.0: V2.0.8_build200701
	KD8003(B)	Protocol 2.0: V2.2.58_build220725
	KV6113(B)/KV8X13(B)	V2.2.53_build220816
	KV6113(C)	V2.2.55_build220816
Indoor Station	DS-KH6320-LE1	V1.4.62_build220414
Main Station	KM9503	V1.0.36_build220619

Reason of Upgrade

Fix bugs, enhance products quality and meet customers' requirements.

Modified Features

8. Fixed the problem of not being able to slide the screen after resting the screen in the door station configuration page of the wizard
9. Fix the occasional defect: after the indoor station activation and configuration is completed, it prompts and display two identical indoor extensions.

Indoor Station Firmware V2.2.2_build221128 Release Note (2022-12-02)

Device Model	DS-KH6320-LE1(B), DS-KH6320-LE1(B)/White, DS-KH6320-TE1(B), DS-KH6320-WTE1(B), DS-KH6350-WTE1, DS-KH6350-TE1
Firmware Version	V2.2.2_build221128
iVMS-4200	V3.8.3.1 or later

Recommended Firmware

It is recommended to use the following devices and version together, because they can cooperate and work normally after the docking test.

Device type	Test model	Version
Door station	KD8003	Protocol 1.0: V2.0.8_build200701
	KD8003(B)	Protocol 2.0: V2.2.58_build220725
	KV6113(B)/KV8X13(B)	V2.2.53_build220816
	KV6113(C)	V2.2.55_build220816
Indoor Station	DS-KH6320-LE1	V1.4.62_build220414
Main Station	KM9503	V1.0.36_build220619

Notes:

1. This version firmware is compatible with both protocol 1.0 and 2.0 door station firmware

Devices of Door Station	Firmware	Protocol Type
First Generation	All versions	Protocol 1.0
KD8003	V2.0.X	Protocol 1.0
	V2.2.3 and above	Protocol 2.0
KV(B) Series	V2.1.X	Protocol 1.0
	V2.2.3 and above	Protocol 2.0
KB8113	V2.2.1	Protocol 1.0
	V2.2.10 and above	Protocol 2.0
KD9203/KD3003/KD8103/KD8023	All versions	Protocol 2.0

2. Test records only contain the cases for normally devices and do not represent all the scenarios and all the functions.

Reason of Upgrade

Add new feature, fix bugs, enhance products quality and meet customers' requirements.

New Features

1. The wizard is fully optimized, including:

- A. Quick setting for registration password

After checked, the registration password of indoor station will be consistent with its activation password, no need to input manually.

Note: Registration password is used to register between devices, if different, it will cause calling failed. All devices in same intercom system must use same registration password.

Indoor Station Settings 4/9

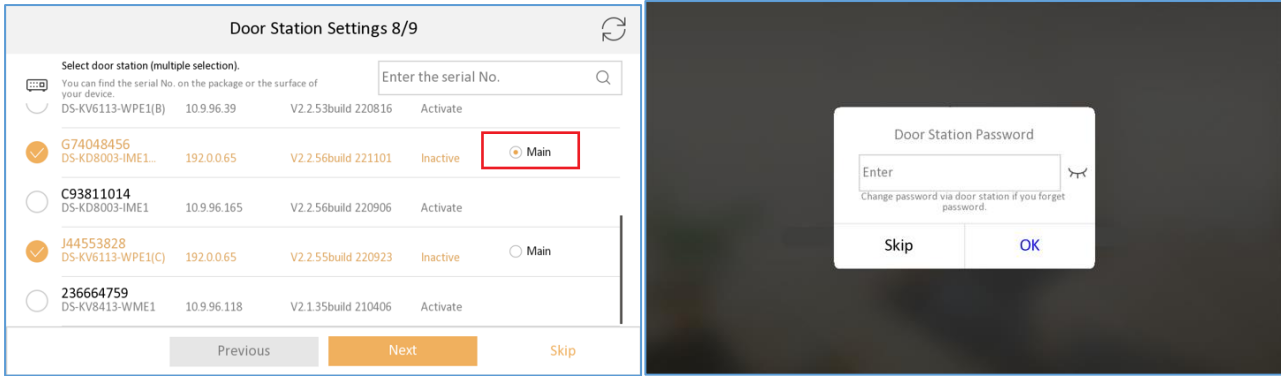
Device Type	Indoor Station >
Floor No	1
Room No	1
Advanced	>
Registration Password <input type="checkbox"/> Same as the admin password.	Not configured >

Previous Next Skip

- B. Link indoor station with main and sub door station

Note:

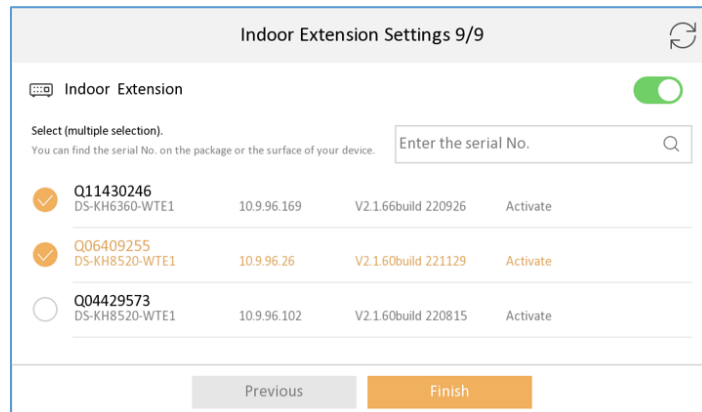
- a. the first selected will be the main door station by default, the second will be sub1, 3rd will be sub2, etc. You can also cancel and select the main door station manually.
- b. Maximum select 17 door stations at one time (1 main and 16 sub door stations)
- c. If the selected devices are not activated, indoor station will activate them with same activation and registration password, then set the IP address for them in same network segment automatically.
- d. If the door station is already activated with different password, it will prompt you to input door station password
- e. If the main and sub door station are activated with different activation password, the registration will be failed (sub door station can't call indoor station).



C. Link indoor station with indoor extension

Note:

- The selected indoor station will be and numbered as indoor extension 1,2,3...
- Maximum select 5 indoor extensions at one time
- If the selected devices are not activated, indoor station will activate them with same activation and registration password, then set the IP address for them in same network segment automatically.
- If the selected devices are activated with different password, the registration will be failed (door station can't call indoor extension).



D. Pairing with main door station, sub door station and indoor extension

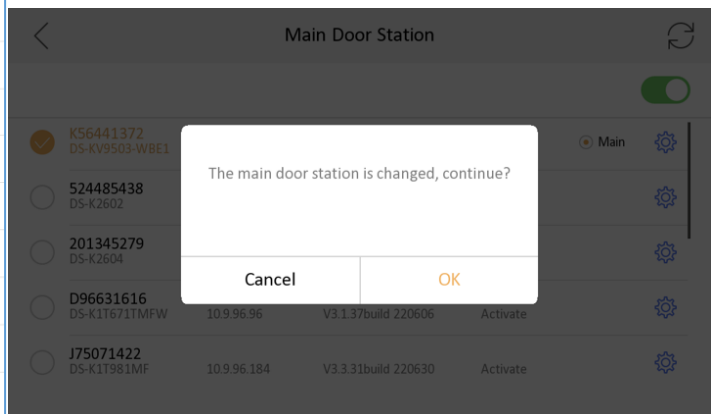
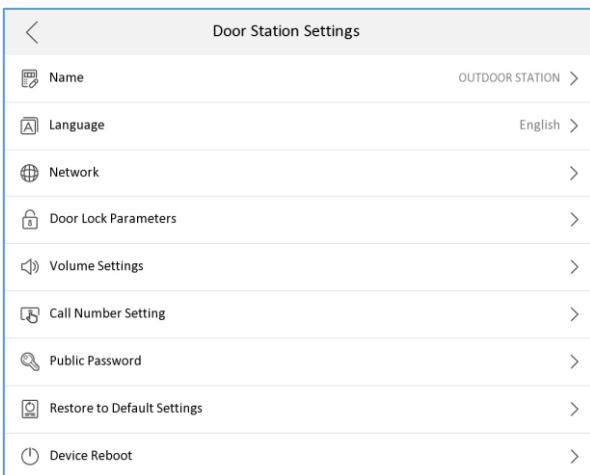
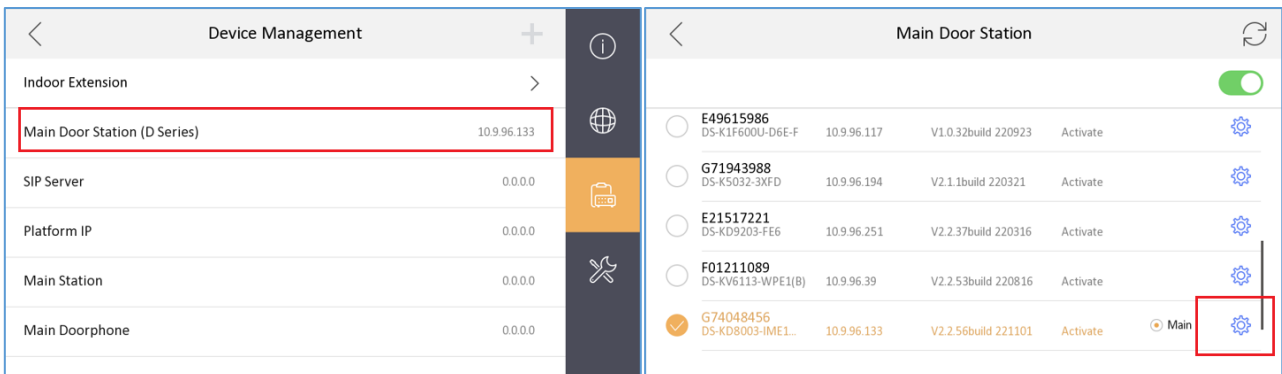
Note: The pairing time duration depends on the device quantity you selected in previous steps, it will take about up to 5 mins, please wait patiently until the process finish and show "Configured" as below.



2. Set the important parameters of door station from indoor station Menu-Advanced settings-Configuration-Device Management-Main Door Station (not from the wizard).

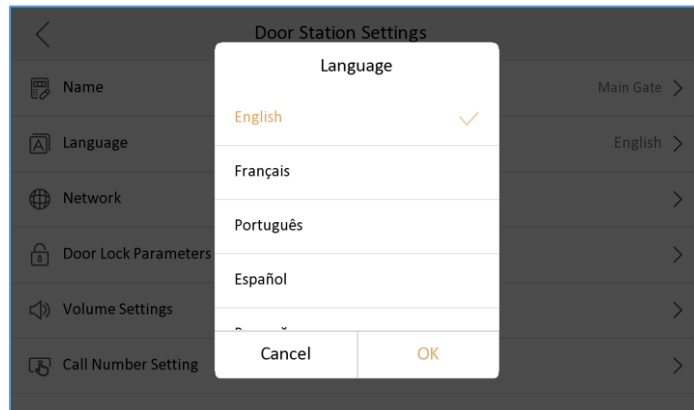
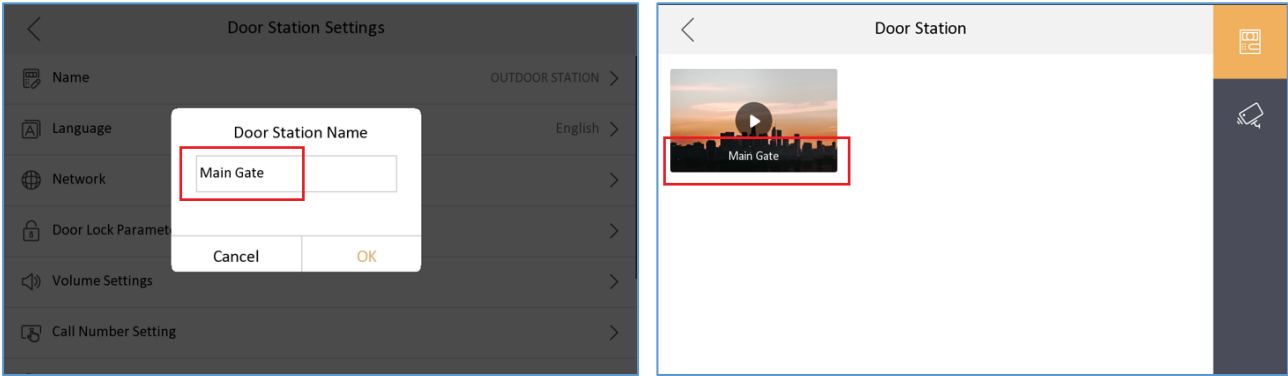
Note:

- A. You can change parameters of all door station (no matter it's linked or not) in the list by click the setting icon, see pic 2.
- B. You can also change linked main door station from this list by click device from the list, if you want to change linked sub door station, please go to Advanced settings-Configuration-System maintenance-Wizard, and link device again.
- C. After change the linked main door station, device will prompt "The main door station is changed, continue?", see pic4 as below

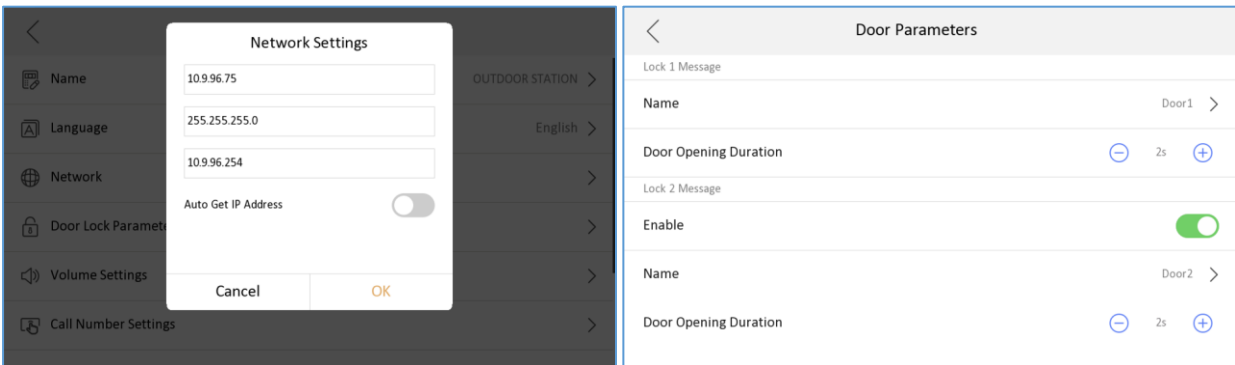


The parameters we can configured from indoor station including:

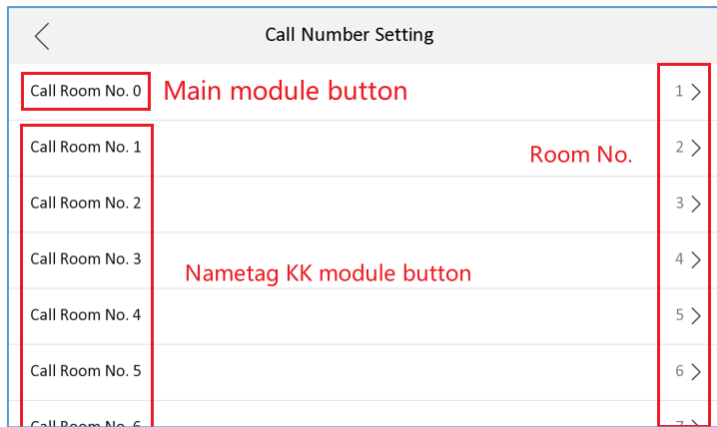
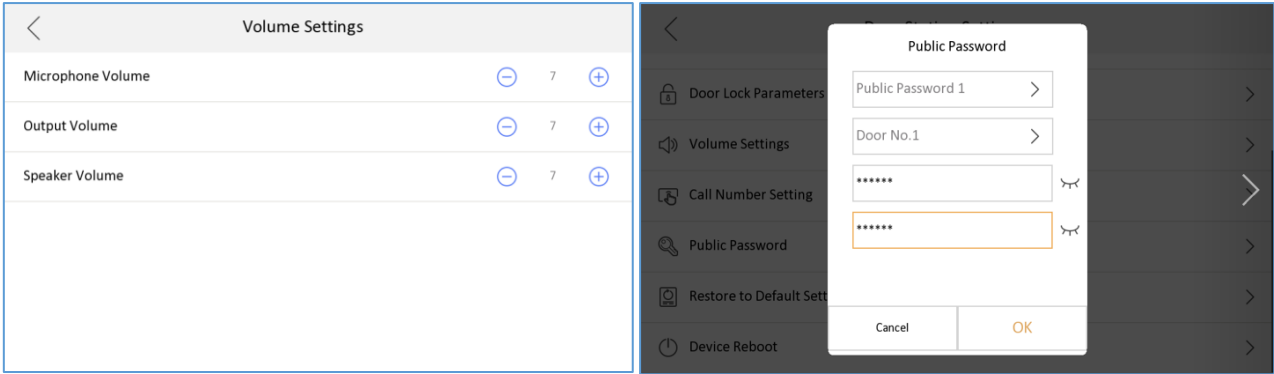
A. Set door station name (will be displayed in live view page), set door station language.



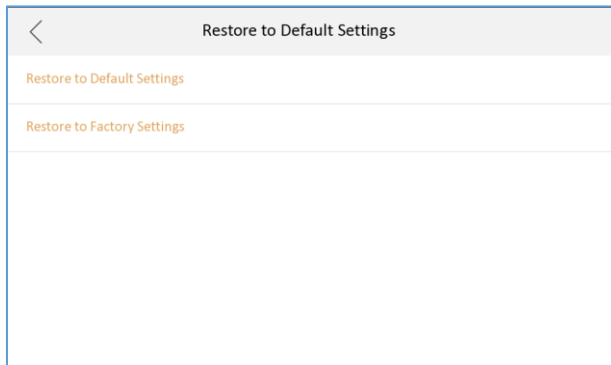
B. Set door station IP address, subnet mask, gateway, enable DHCP, lock name, door open duration, enable lock2, etc.



C. Door station volume setting, physical button call number, public password (lock1 or lock2)




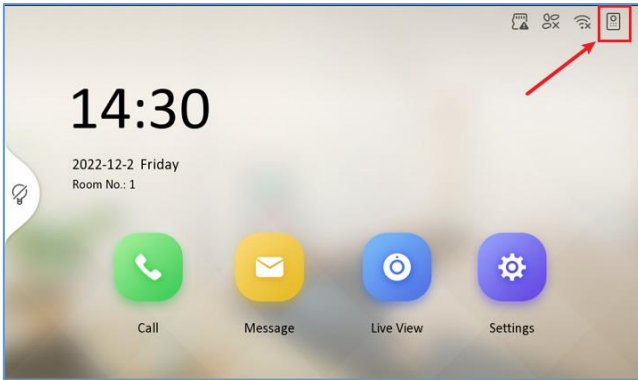
D. Restore door station to default or factory settings.



Modified Features

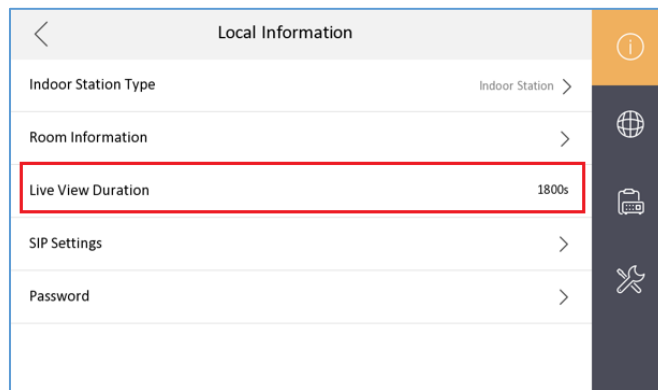
1. Optimized the icon of door station registration status in the main UI up right corner.

Note: If the door station call indoor station failed, you can click this icon  to register to door station manually, if register failed, it will indicate the reason for the failure.



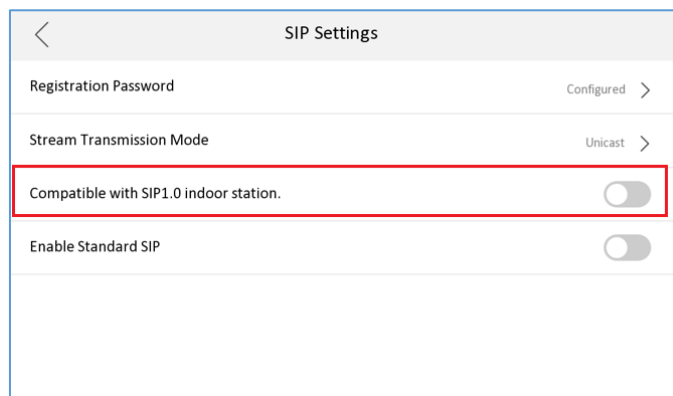
	Before	Now
Indoor station registers to door station success		
Indoor station registers to door station failed		
Indoor station registers to door station and KM9503 success		

- Door station and IP camera live view duration increase to 1,800s, range 10-1,800s, 30s by default.



- Support switching between protocol 1.0 and 2.0, by default it's protocol 2.0. After enable, the indoor station is compatible with protocol 1.0 indoor extension and not compatible with protocol 2.0 indoor extension.

Note: After enable, all indoor extension of this indoor station must be protocol 1.0 firmware, don't mix protocol 1.0 and 2.0 indoor extension under same indoor station, or it will result to calling failed.



6 Series Indoor Stations

Version: V2.1.66_build220926

Release Note

(2022-09-29)

Firmware Basic Information	Firmware Version	V2.1.66_build220926
	Device Type	DS-KH6320-LE1(B) DS-KH6320-LE1(B)/White DS-KH6320-TE1(B) DS-KH6320-WTE1(B) DS-KH6350-WTE1 DS-KH6350-TE1

Fix

Optimized the screen touching sensitivity of the following product models:

- DS-KH6350-TE1
- DS-KH6350-WTE1

Note: This version is only worked with DS-KH6350-WTE1.

6 Series Indoor Stations
Version: V2.1.58_build220815
Release Note
(2022-08-23)

Firmware Basic Information	Firmware Version	V2.1.58_build220815
	Device Type	DS-KH6350-WTE1 DS-KH6320-LE1(B) DS-KH6320-LE1(B)/White DS-KH6320-TE1(B) DS-KH6320-WTE1(B) DS-KH6360-TE1 DS-KH6360-WTE1

Fix some bugs

6 Series Indoor Stations

Version: V2.1.50_build220720

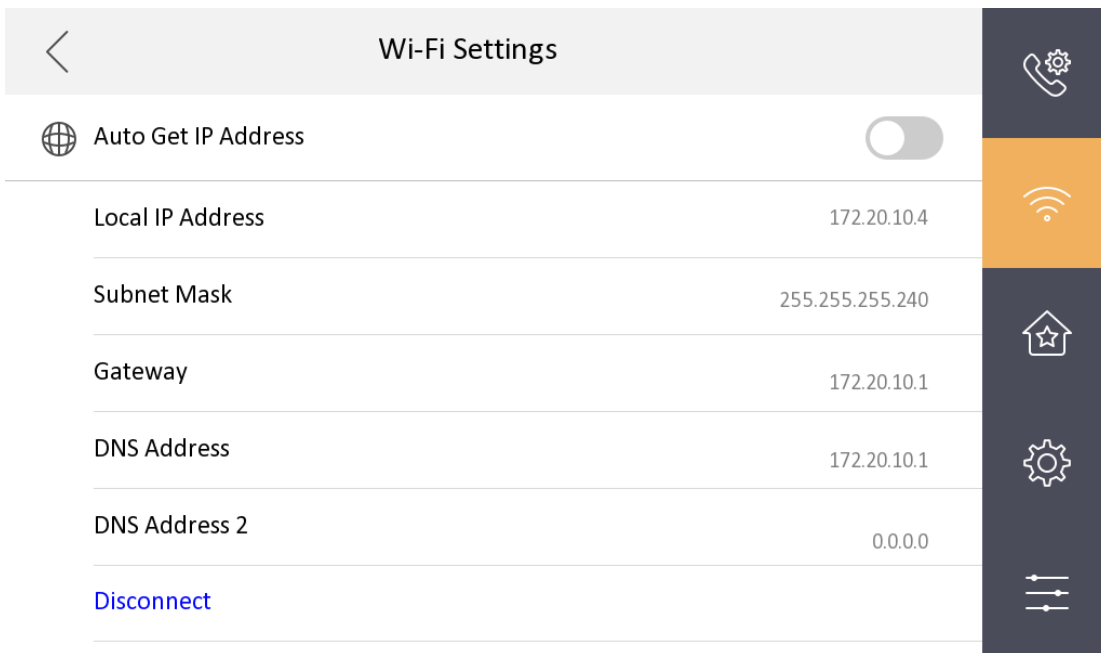
Release Note

(2022-07-20)

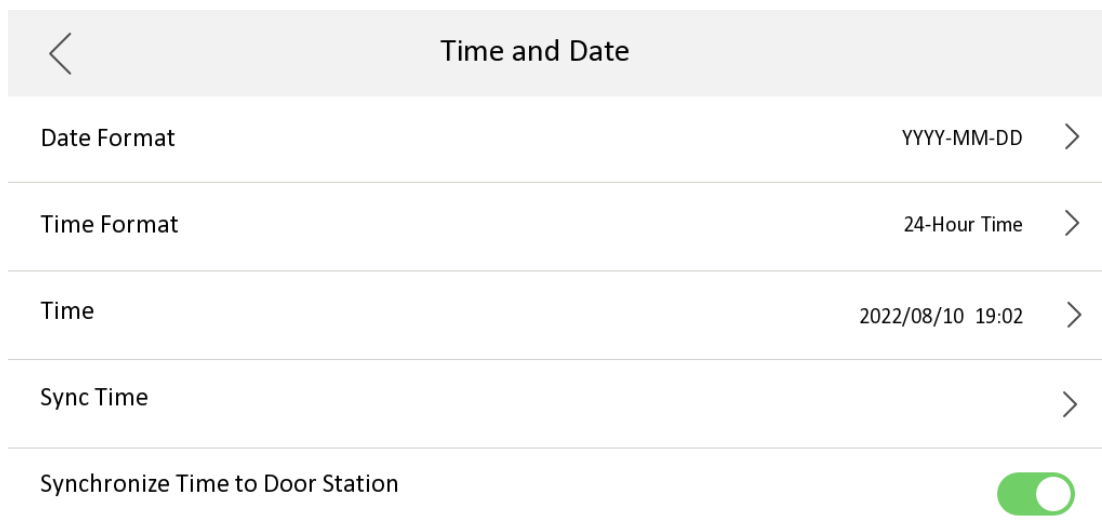
Firmware Basic Information	Firmware Version	V2.1.50_build220720
	Device Type	DS-KH6350-WTE1 DS-KH6320-LE1(B) DS-KH6320-LE1(B)/White DS-KH6320-TE1(B) DS-KH6320-WTE1(B) DS-KH6360-TE1 DS-KH6360-WTE1

New

1. Support configure the Static IP of Wi-Fi (enable device configure DHCP, IP address, Subnet mask, gateway, DNS1, DNS2).

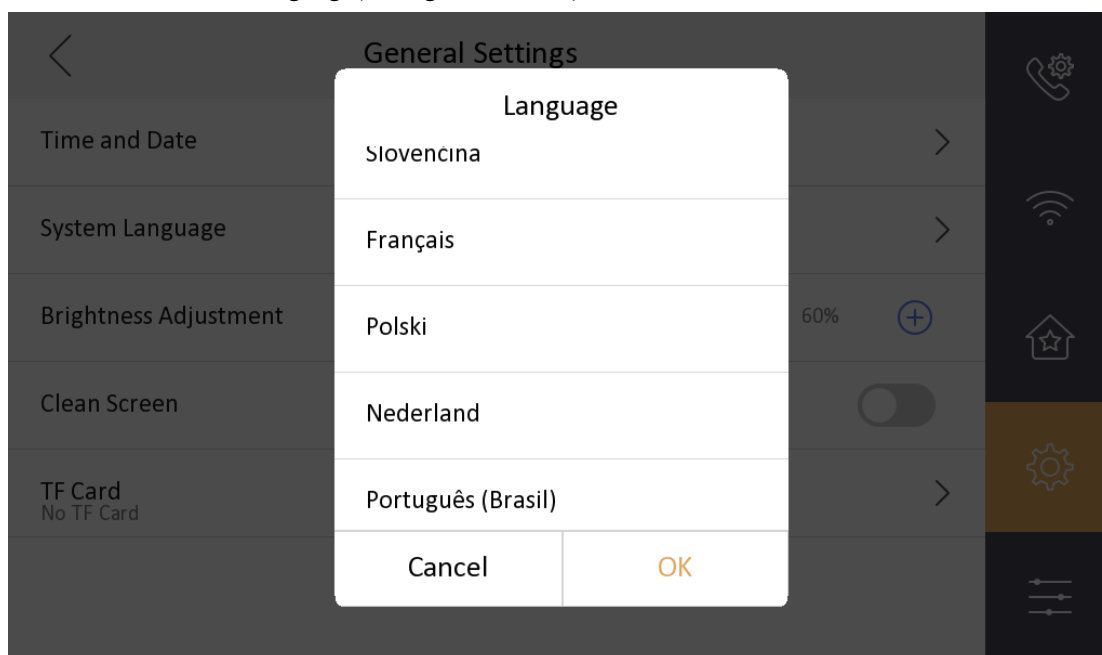


2. Indoor station supports configuring time and time zone information for the door station.



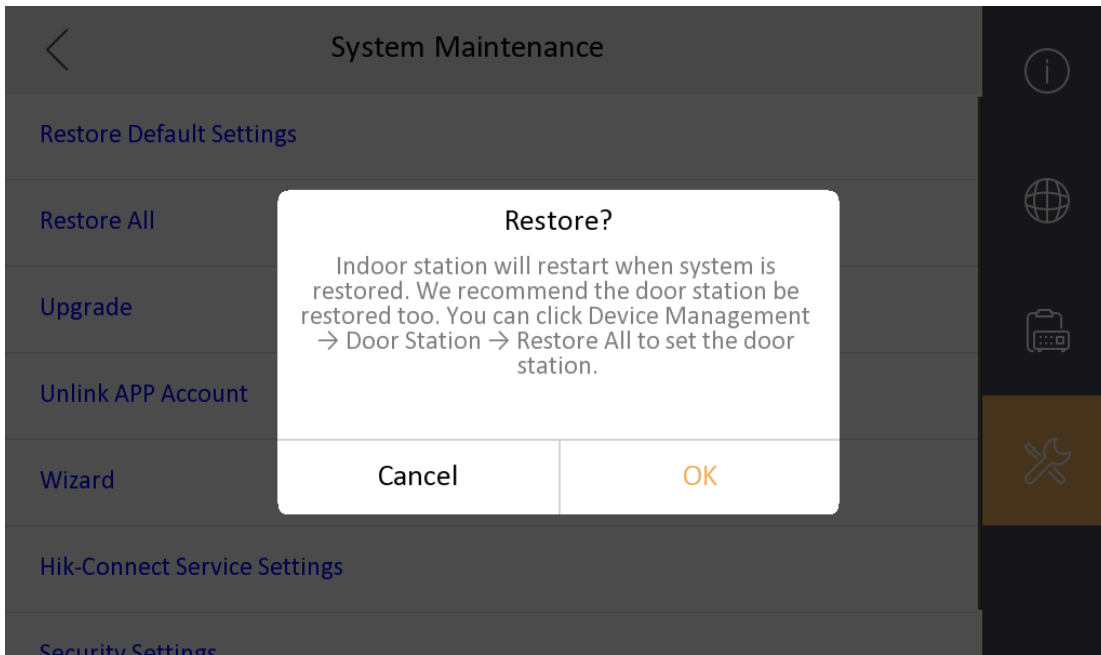
3. Support C-S registration mode of indoor station, and master station.

4. Two new Standard language(Portuguese,Slovak) have been added.

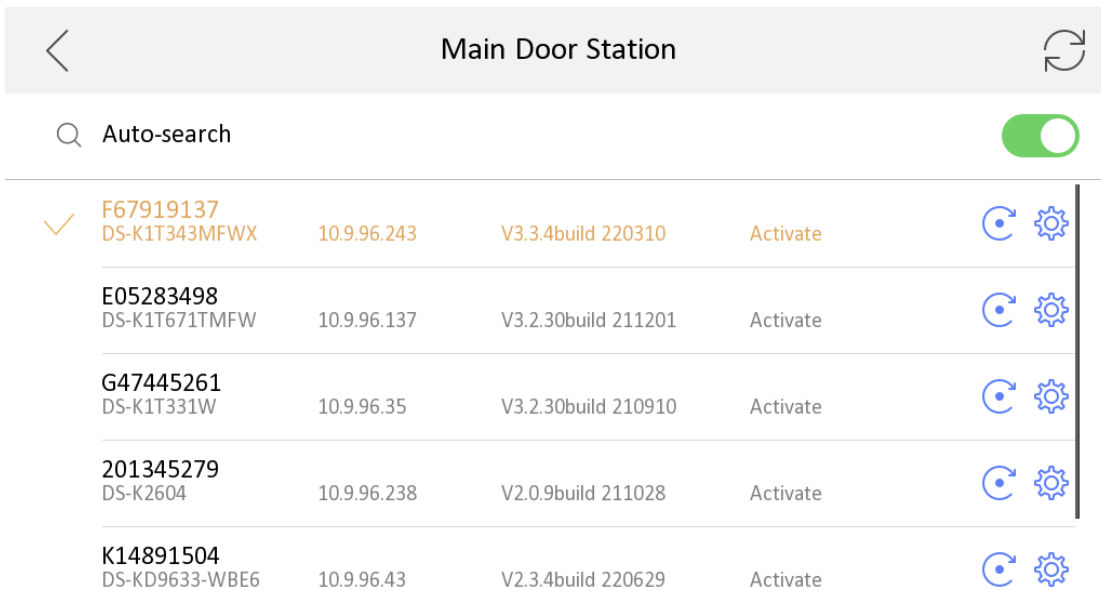


Fix

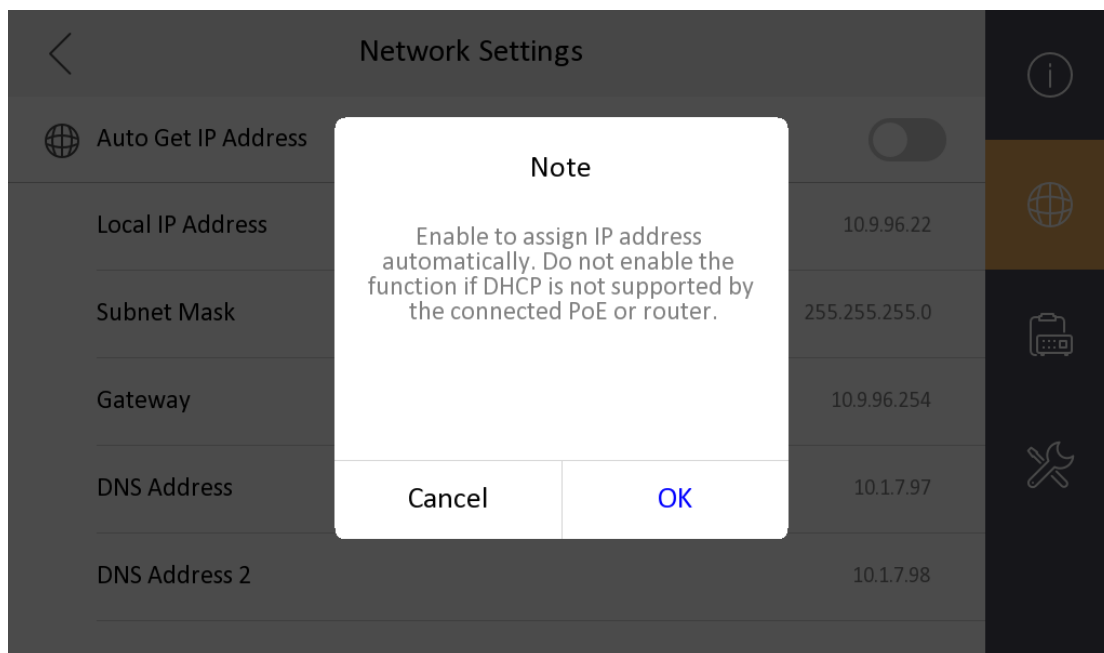
1. Fix the indoor station maintenance interface. When click restore or restore all, a prompt information will pop.



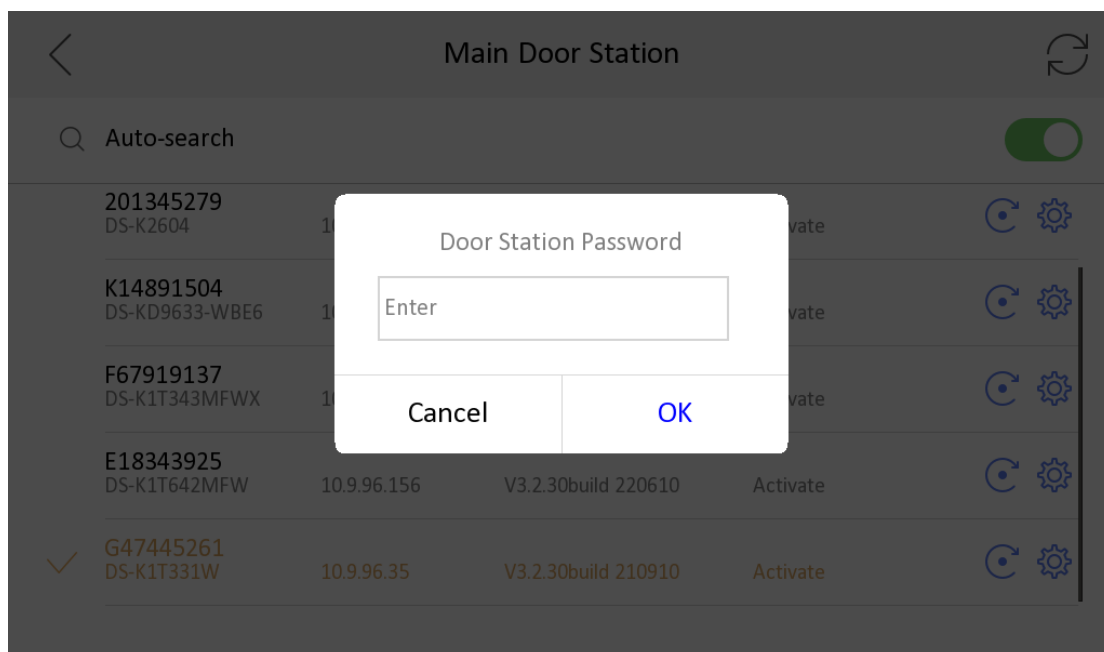
2. The indoor station wizard-related devices added the effect of selecting the door station.



3. Add a prompt information when assign network IP address automatically.



4. In configure wizard to related door station, when the door station password is different from the indoor station, prompt information will pop.



6 Series Indoor Stations

Version: V2.1.44_build220516

Release Note

(2022-05-22)

Firmware Basic Information	Firmware Version	V2.1.44_build220516
	Device Type	<p>DS-KH6350-WTE1</p> <p>DS-KH6320-LE1(B)</p> <p>DS-KH6320-LE1(B)/White</p> <p>DS-KH6320-TE1(B)</p> <p>DS-KH6320-WTE1(B)</p> <p>DS-KH6360-TE1</p> <p>DS-KH6360-WTE1</p>

Fix

1. Fixed a sync issue between device and Hik-Connect service.
2. Fixed a sync issue for Main-Sub indoor station mode.

New

1. Support the network parameters synchronized from villa door station.

The screenshot shows the 'Configuration' menu on the left with 'Device Management' selected. The main area displays the 'Device List' table with the following data:

No.	Device Type	IP Address	Serial No.	Model	Current Version	Floor No.	Room No.
1	Indoor Station	10.9.96.91	Q05570170	DS-KH6350-WTE1	V2.1.44 build 220516	1	22
2	Sub Door Station	10.9.96.147	C93811014	DS-KD8003-IME1	V2.2.52 build 220518	1	--
3	Indoor Station	10.9.96.154	Q04429573	DS-KH6320-WTE1	V2.1.44 build 220516	1	5
4	Indoor Station	10.9.96.177	Q01870196	DS-KH6360-WTE1	V2.1.44 build 220516	1	1

6 Series Indoor Stations

Version: V2.1.38_build220228
Release Note
(2022-03-01)

1. Firmware Basic Information

Firmware Basic Information	Firmware Version	V2.1.38_build220228
	Device Type	DS-KH6350-WTE1 DS-KH6320-LE1(B) DS-KH6320-LE1(B)/White DS-KH6320-TE1(B) DS-KH6320-WTE1(B) DS-KH6360-TE1 DS-KH6360-WTE1

Notes:

Please update firmware to the latest version to ensure the perfect user experience

1.1 Recommended Firmware

It is recommended to use the following devices and version together, because they can cooperate and work normally after the docking test.

Test resource	Device type	Version
Release device	DS-KH6350-WTE1	V2.1.38_build220228
Door Station	DS-KD9203-E6	V2.2.37_build210929
	KD8023-E6	V2.2.2_build 201019
	DS-KD8003-IME1	V2.2.52_build 211126
	DS-KB8113-IME1	V2.2.51_build 211110
	DS-KV8413-WME1(B)	V2.2.53_build 211104
Indoor Station	DS-KH9510-WTE1	V2.1.28_build210803
	DS-KH6320-LE1	V1.4.58_build210823
	KH6320-WTE1	V2.1.32_build210926
Main Station	KM9503	V1.0.32_build210926

Notes:

Test records only contain the cases for normally devices and do not represent all the scenarios and all the functions.

2. New Features

1. New version of the device is based on the last version and develop new appearances.



2. Support password recovery by security question. You can set as the following steps.

(1) "Wizard">Password reset method>change to security question.

Wizard-Password Reset Method 2/6

Change to Reserved Email

1. You father's first name.	>	Enter Answer
2. You mother's first name.	>	Enter Answer
3. Your teacher's first name in senior hig...	>	Enter Answer

PreviousNextSkip

(2) Configuration>system maintenance>security settings>security question

< Security Question

1. You father's first name.	>	Enter Answer
2. You mother's first name.	>	Enter Answer
3. Your teacher's first name in senior hig...	>	Enter Answer

3. The indoor Station adds the configuration item of code stream transmission mode, supporting choosing unicast and multicast.

According to the web setting for the switchers or the routers.

< SIP Settings

Registration Password	Configured >
stream transmission mode	Unit Broadcast >
Enable Standard SIP	<div><p>Unit Broadcast ✓</p><p>Group Broadcast</p></div>

4. Add message and snapshot configuration options, which are closed by default. After opening, you can configure the deletion time of message and screenshot.

Shortcut Settings	
Alarm	<input type="checkbox"/>
Call Management Center	<input type="checkbox"/>
Leave Message	<input checked="" type="checkbox"/>
Leave Message Time	30 days >
Snapshot	<input checked="" type="checkbox"/>
Snapshot Time	30 days >

4. Modified

1. The function of password recovery by email is switched to the configuration wizard
2. The compatibility of standard SIP Server is improved: (1) ASTERISK (2) FreePBX (3) 3CX (4) ELASTIX (5) PBXware (6) miniSipServer (7) Brekeke (8) OpenSIPs (9) Kamailio

Customer Impact and Recommended Action

This update refers to function/compatibility improvement and will take effect automatically after the Date of Change. We are very sorry for any inconvenience of use-habit changes caused by this action.

For any questions and request for this firmware, please contact our local technical support team.

Note:

- Hikvision reserves the right to change, alter or withdraw the above notification without prior notice.
- Product design and specifications are subject to change without prior notice.
- The Hikvision firmware may contain errors known as errata, which may cause the product to deviate from published specifications. Current characterized errata are available on request.
- Hikvision is not liable for any typing or printing errors.

Hikvision Digital Technology CO., Ltd.
No. 555 Qianmo Road, Binjiang District, Hangzhou 310051,
China
Tel: +86-571-8807-5998
FAX: +86-571-8993-5635
Email: overseabusiness@hikvision.com