

# Video Intercom Module Door Station

## V2.0.0\_Build190228 Release Note

Firmware Version	Door station main unit device firmware: V2.0.0_190228 Door station sub unit device firmware: V1.0.0_190118
iVMS-4200 Version	V2.6.5.22 build20190122

Release model:

Name	Model
Main Unit	DS-KD8003-IME1
Nametag Module	DS-KD-KK
Keypad Module	DS-KD-KP
Mifare Card Reader Module	DS-KD-M
EM Card Reader Module	DS-KD-E
Indicator Module	DS-KD-IN
Blank Module	DS-KD-BK

**Note:** The configuration need to be set by product line iVMS client. The next iVMS Client version will support module door station.

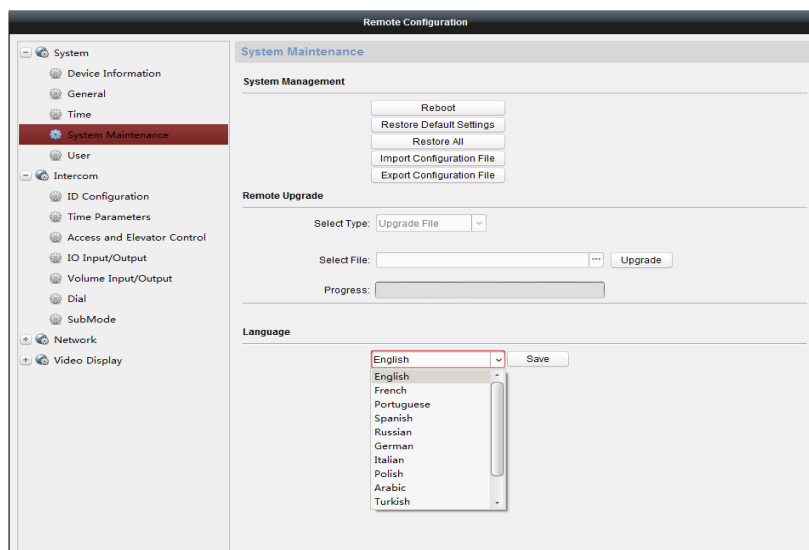
**New function:**

**1、 Modules free selection and connection:**

- 1) All modules are in same size, support maximum 8 sub units (Standard POE IEEE 802.3af protocol: support external connection of 4 units; Additional 12V power supply which above 30W: support max 8 units );
- 2) Support surface mounting and flush mounting;

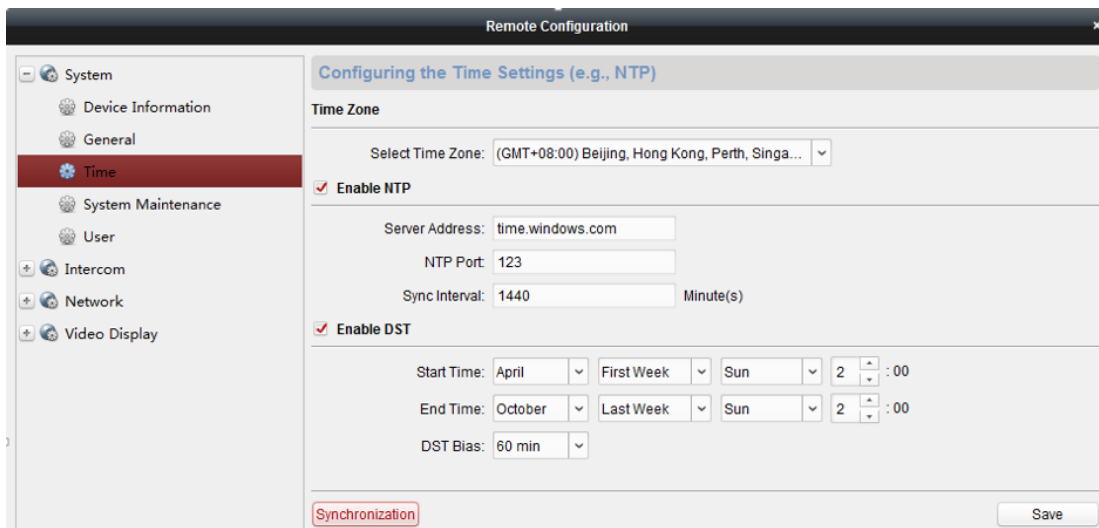
**2、 Multi language:**

Supports 15 languages: English, France, Portuguese, Spanish, German, Italian, Polish, Hungarian, Dutch, Romanian, Bulgarian, Czech, Greek, Croatian, Serbian.



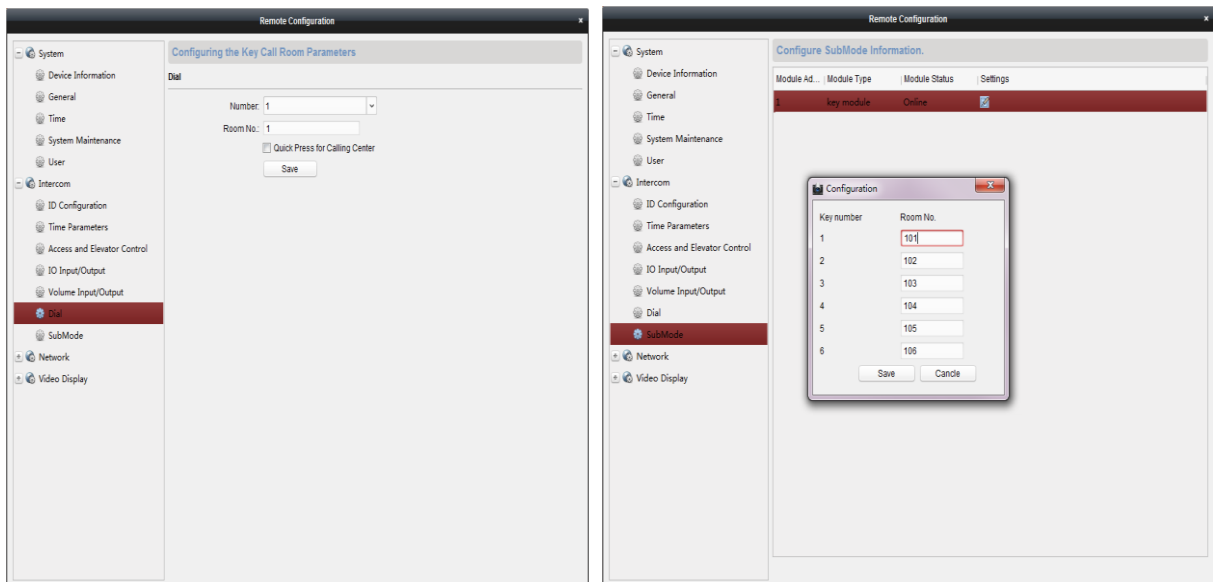
### 3、 Support DNS server and NTP server configuration

- 1) Configure DNS server IP address and NTP server IP address by client software.
- 2) Device does automatic timing correct to NTP server at regular period.



### 4、 Room number setting:

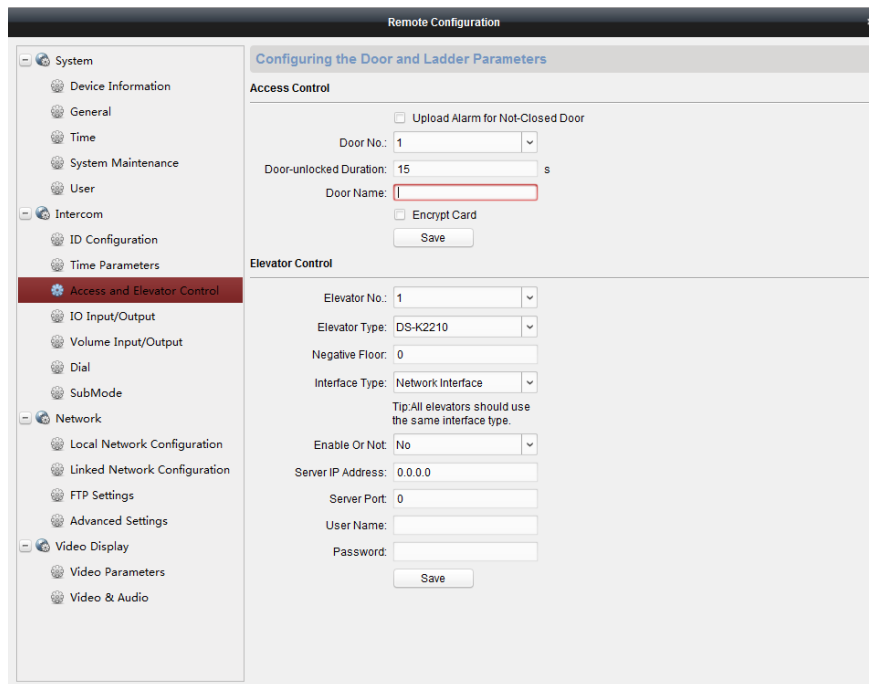
- 1) After added the device to iVMS-4200 client. Enter the device Remote Configuration -> Intercom -> Dial. You can set the main module button to corresponding room number.
- 2) Enter the device Remote Configuration -> Intercom -> Sub Mode, you can check the online status of sub-module.



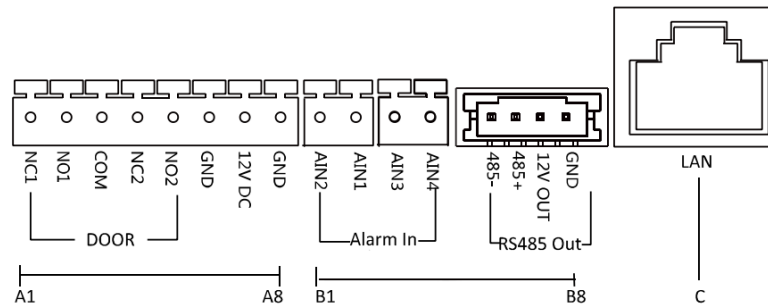
- 3) On the sub-module interface, you can find the nametag module, each button can set the corresponding room number. (Only nametag module support to be configured, other module such as Keyboard module does not need to be configured.)

### 5、 Controlling two doors:

- 1) Configure door unlock duration and name of doors on iVMS-4200 client. The door name is only used to display in iVMS-4200 client;



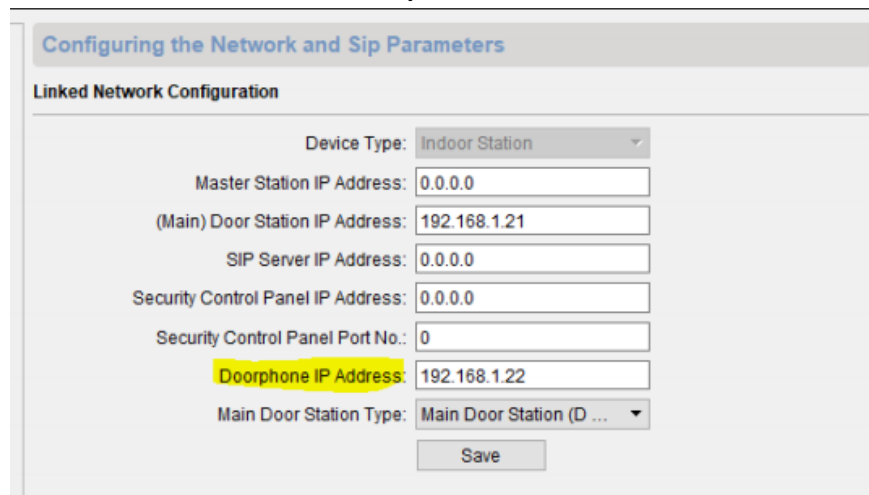
2) Door magnetic connected to AIN1 detects status of the lock that connected to NC1/NO1; Door magnetic connected to AIN2 detects the status of the lock connected to NC2/NO2.



3) Lock should be powered by itself. Max voltage and current for relay is 30V and 1A.

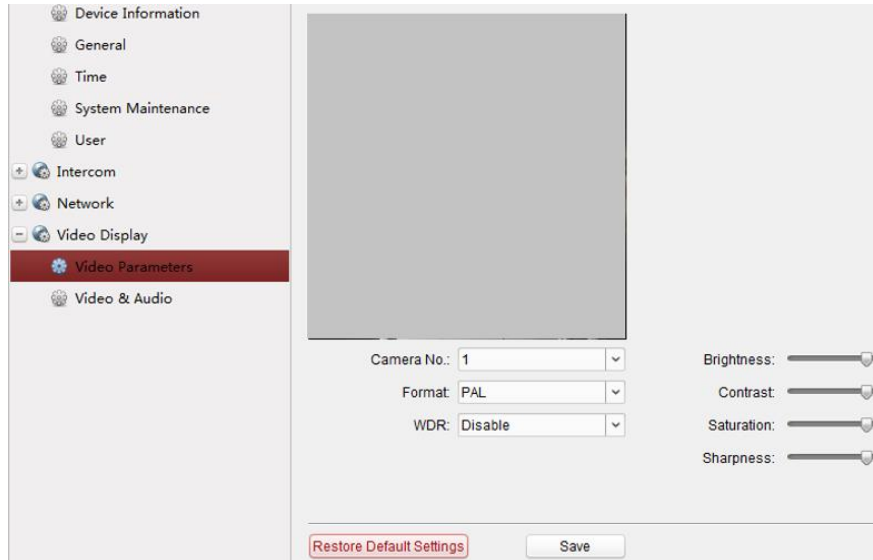
## 6、 Door phone mode setting:

Door station can work as door phone without change working mode. Directly add door station's IP address on indoor station's local interface or by iVMS:

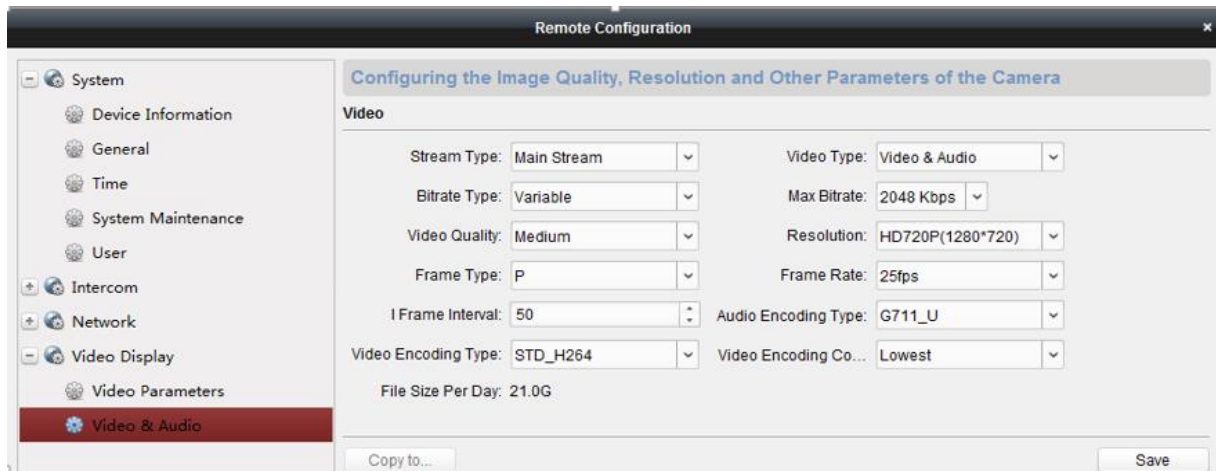


## 7、 Support video related configuration:

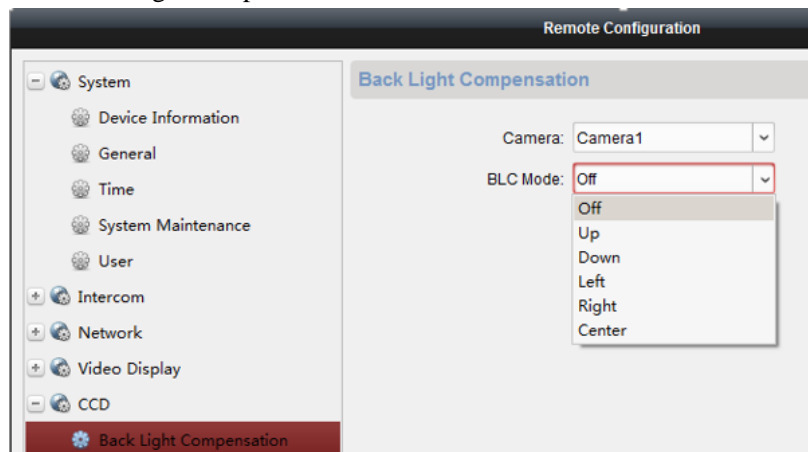
- 1) Enter video & audio option from remote configuration on 4200, it supports configuration of video related option, including basic configuration like resolution of main/sub stream, frame type, WDR switch;
- 2) Frame type: P/N (P defaulted); WDR: On/Off (Off defaulted)



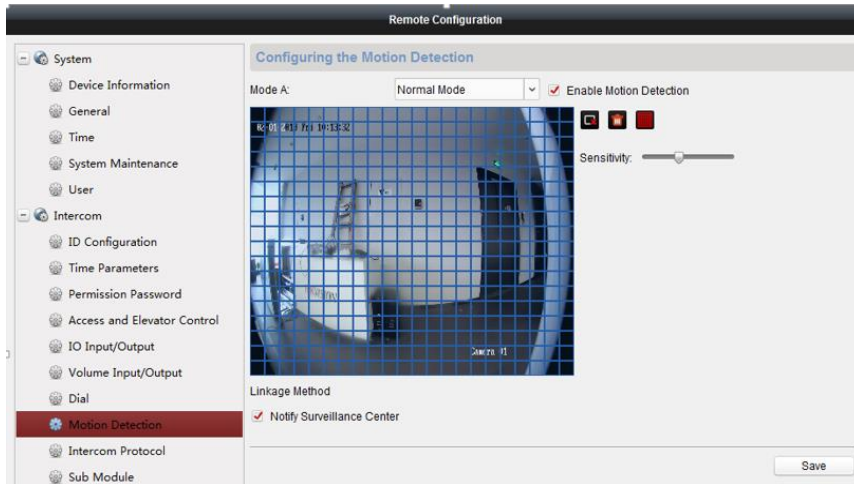
### 3) Configuration of main/sub stream



### 4) Configuration of backlight compensation.



## 5) Configuration of motion detection.



### Notice:

1. Main unit is not supported to be configured as outer door station;
2. Before use sub-module, please configure DIP switch of sub unit , two sub-modules cannot be set as the same DIP switch address;
3. On the condition of multi module connection , ground line needs to be connected;
4. Illegal card alarm function is not supported;
5. The device does not support the use of private passwords or duress passwords to open the door in standard SIP mode. Only public passwords can be used.
6. The default room number of the main module is changed to 1. The default room number of the nametag module is 2, 3, 4, 5, 6, and 7;
7. Pressing \* key of the keyboard module can hang up calls, while pressing call button twice will not hang up calls;
8. The card reader module does not support to issue card by iVMS-4200, only support to issue card locally.

## **Customer Impact and Recommended Action**

This new firmware upgrade is to improve product performance, and will take effect automatically after upgrading from previous versions. We'd like to inform you the above changes. Also, we are sorry for any possible inconvenience of use-habit changes caused by this action.

For questions or concerns, please contact our local technical support team.

Note:

- Hikvision has all rights to alter, modify and cancel this notice.
- Hikvision doesn't give any guarantee for old models' stock.
- Hikvision is not liable for any typing or printing errors.
- For special model's change details, please contact our local technical support team.

Hikvision Digital Technology CO., Ltd.  
No. 555 Qianmo Road, Binjiang District, Hangzhou 310052,  
China  
Tel: +86-571-8807-5998  
FAX: +86-571-8993-5635  
Email: support@hikvision.com