

Video Intercom Firmware V1.5.0 UK Release Notes

(2018-09-14)

Firmware Version:

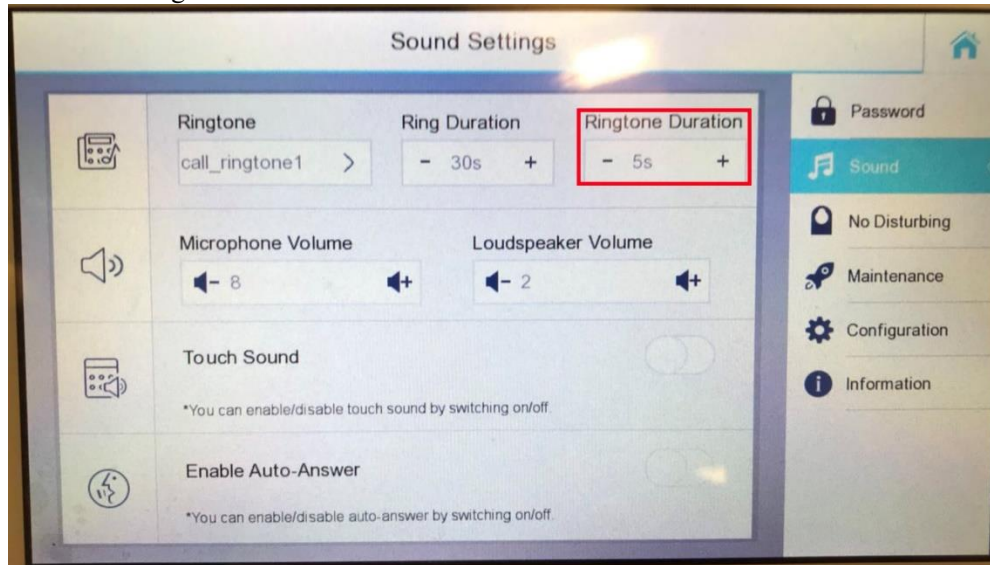
Indoor Station/Master Station	V1.5.0build180907
H5 Platform Door Station	V1.5.0build180827
H0 Platform Door Station	V1.5.0build180816

Type	Device Model	Platform
Villa station	DS-KV8102-IM	H0
Villa station	DS-KV8202-IM	
Villa station	DS-KV8402-IM	
Villa station	DS-KV8102-IP	
Villa station	DS-KV8102-VP	
Apartment Door station	DS-KD3002-VM	H2
Apartment Door station	DS-KD8102-V	H5
Apartment Door station	DS-KD8002-VM	
Indoor station	DS-KH8301-WT	H5
Indoor station	DS-KH8300-T	
Indoor station	DS-KH8301-WTS	
Indoor station	DS-KH6310-WL	
Indoor station	DS-KH6310-W	
Indoor station	DS-KH6310	
Indoor station	DS-KH6210-L	
Master station	DS-KM8301	

Note: V1.5.0 firmware is not compatible with all the previous version firmware, make sure all devices are 1.5.0 firmware. After upgrading to new firmware, manually **restore default setting** for fully upgrade.

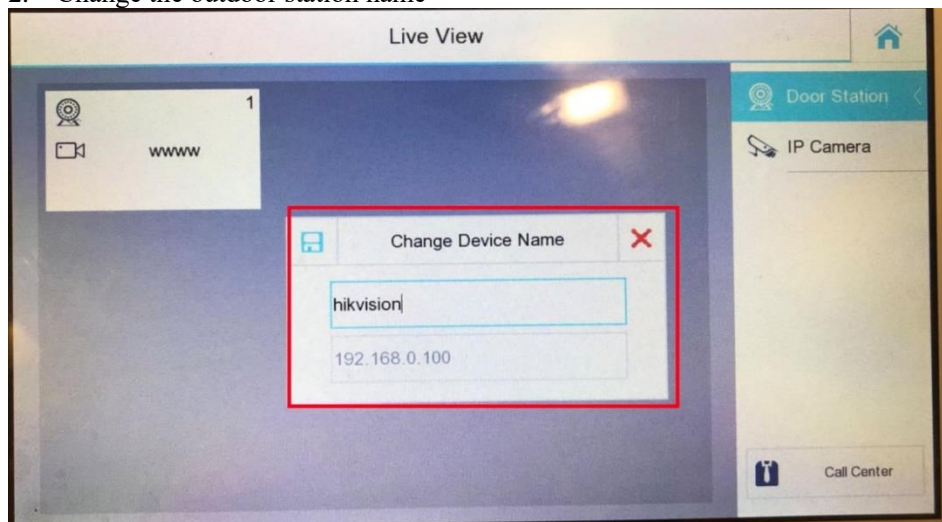
New Features:

1. Set the ringtone duration time



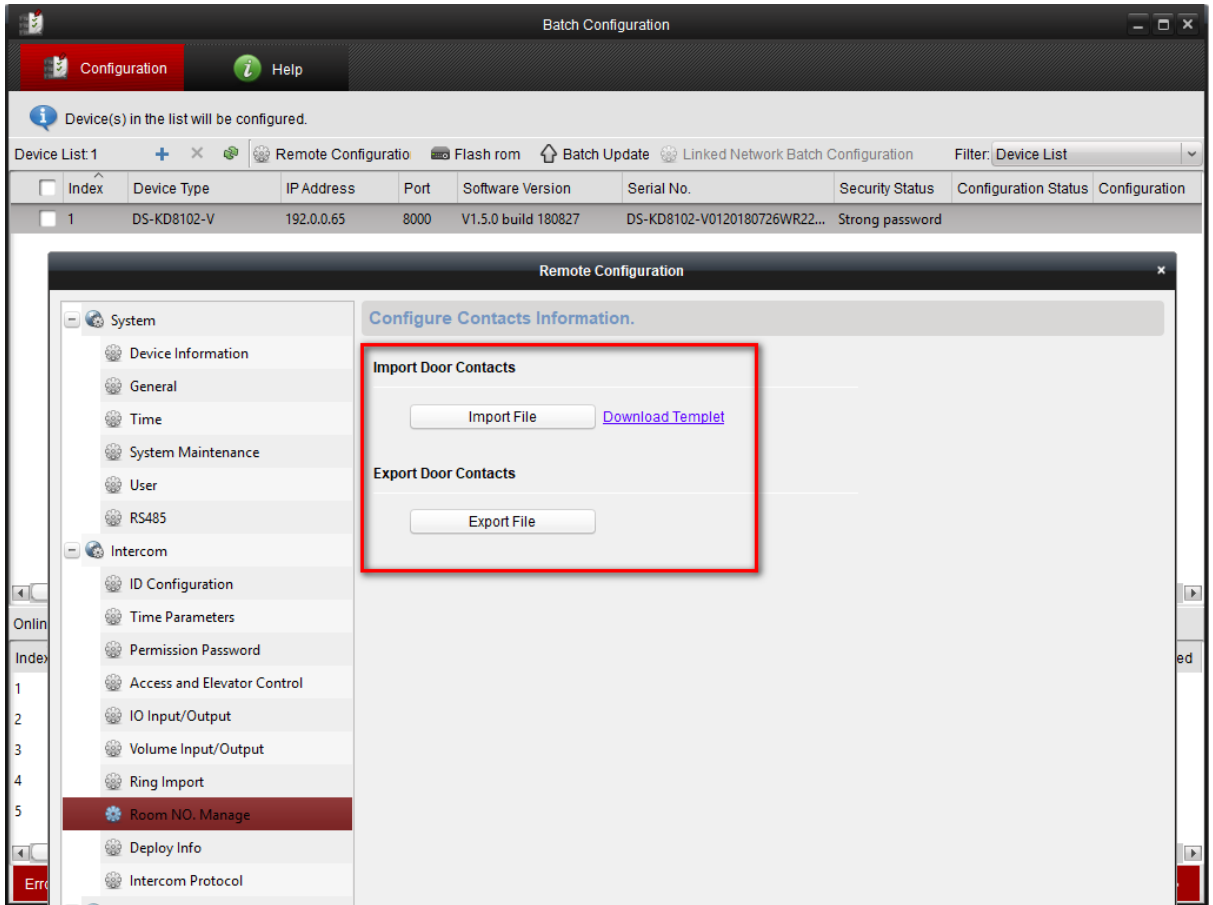
Indoor station can set the Ringtone Duration. By default, the Ringtone Duration time is 5s. It means the ringtone will only last for 5s before it becomes silent. But the call is still on until 30s(Ring Duration) is up.

2. Change the outdoor station name

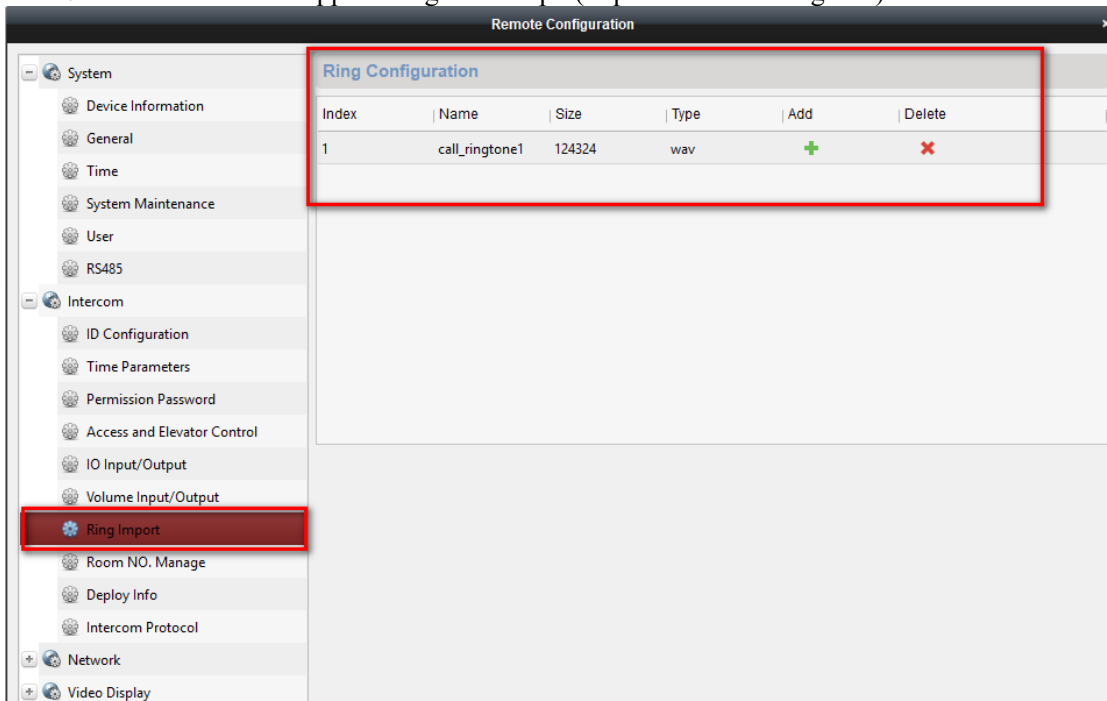


If the indoor station has added the outdoor station, in the live view module, you can see the main outdoor station and sub outdoor station. You can change the outdoor station just press the icon for 2s, then it will pop up a window and you can change the device name.

3. The door station supports Contact list import. (requires Batch config tool)



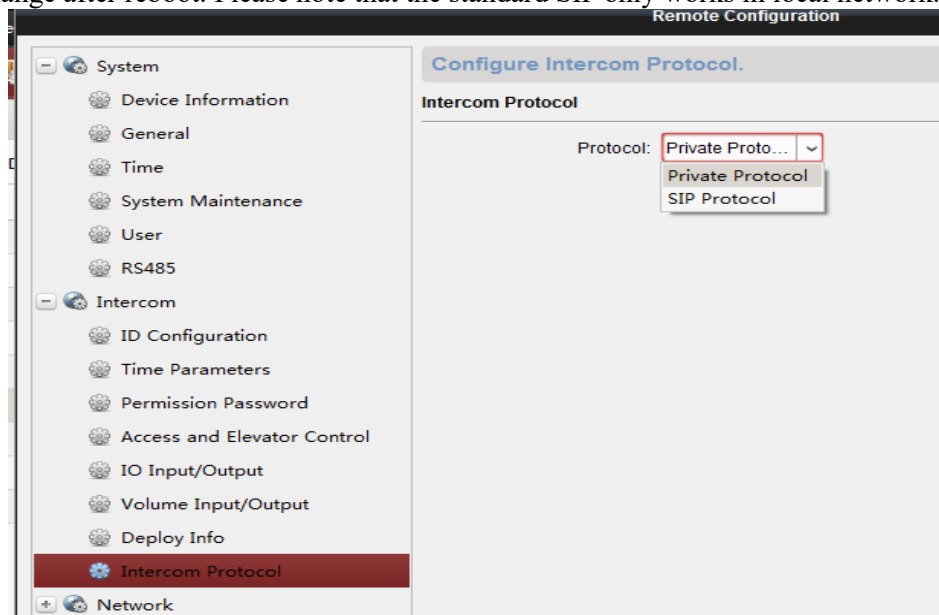
4. The door station supports ringtone setup. (requires Batch config tool)



5. For villa station, if the SIP server and master station IP is not configured on the indoor station and door station, long press call button on the villa door station, it will still ring the indoor station.

If the SIP server and master station are configured for indoor and door station, long press call button will call the master station. Short press call button will call the indoor station.

6. Indoor station and KD series door station support standard SIP protocol, it can be selected in iVMS4200 remote configuration or in device local interface (only indoor station) and will change after reboot. Please note that the standard SIP only works in local network.



Standard SIP Protocol Version: Sip 2.0

Video Format: H.264

Audio Format: G.711U

SIP Server tested: Brekeke

SIP Server not compatible : 3CX

SIP Phone tested:

(1) YEALink (T46G): only audio intercom

(2) Grandstream (GXV3275): audio & video intercom

Function supported with standard sip protocol mode:

(1) Master station, indoor station and door station video intercom

(2) Master station, indoor station monitoring door station

(3) Master station, indoor station and SIP phone unlocking door station

Function not supported with standard sip protocol mode:

(1) KV series villa door station do not support standard SIP

(2) Indoor extension mode not supported

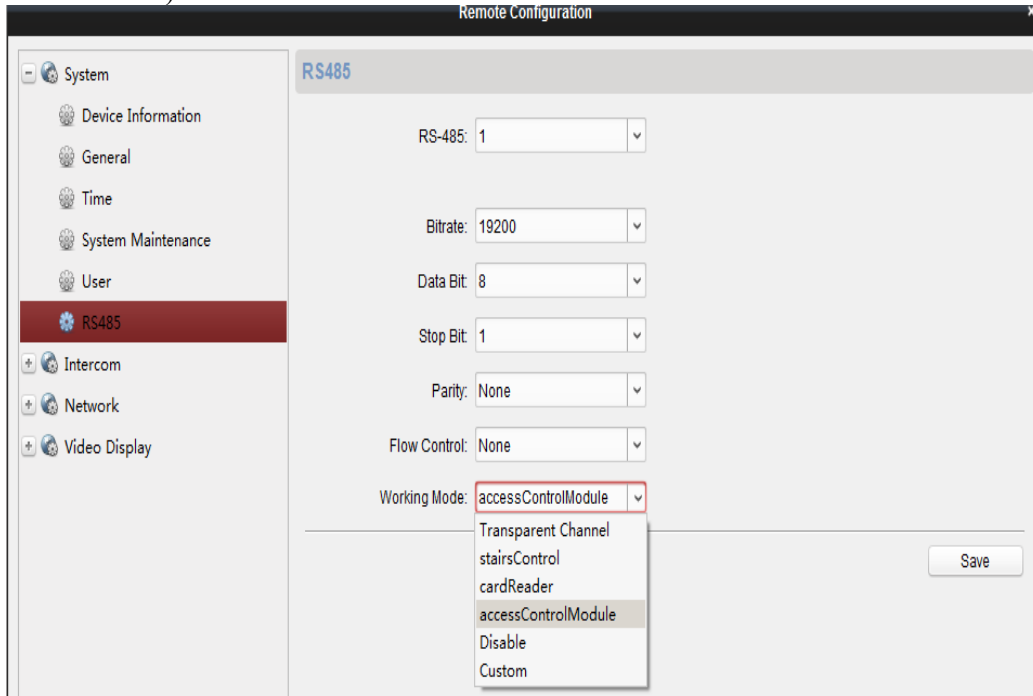
(3) Sub door station mode not supported

(4) APP connection not supported

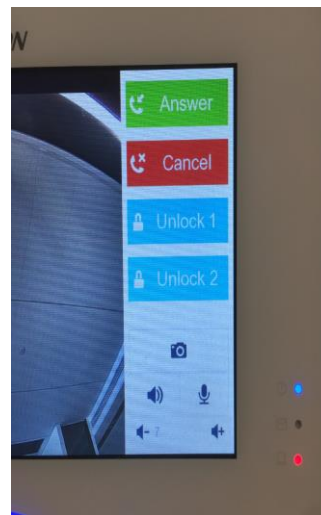
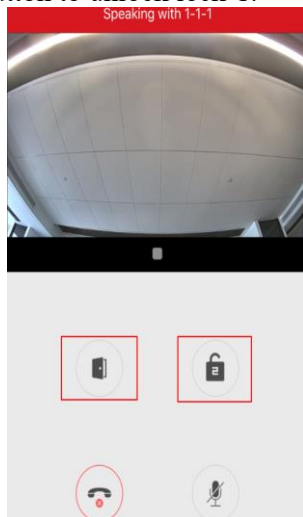
(5) Door phone mode not supported

7. Support control two locks:

- (1) Lock-1 is the lock connected directly to the relay of door station, and lock-2 is the lock connected to security module DS-K2M060 and security module use RS485 to connect to door station (security module RS485 address dial “1”, and choose “access control module” for the RS485 mode)



- (2) iVMS4200, indoor station and Hik-Connect can control 2 locks.
- (3) For mater station and DS-KH6210-L, Long press unlock button to unlock lock-2, short press unlock button to unlock lock-1.

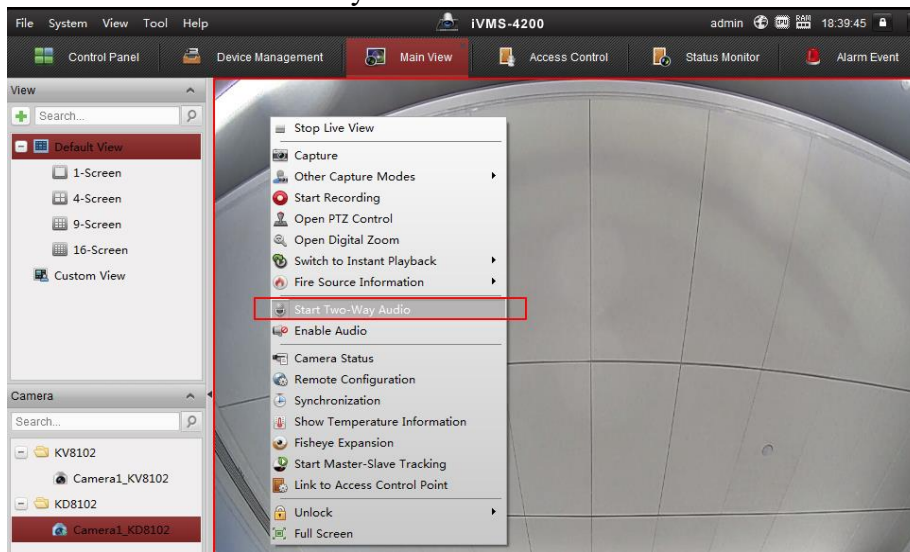


- (4) Security mode for door station support to connect exit button, not support to connect wiegand card reader.

8. Support 3 network connecting modes for Hik-Connect application:

- (1) Indoor station only use UTP which can connect to the internet, it can connect to the cloud and support Hik-Connect application.
- (2) The -W indoor station only use Wi-Fi which can connect to the internet, it can connect

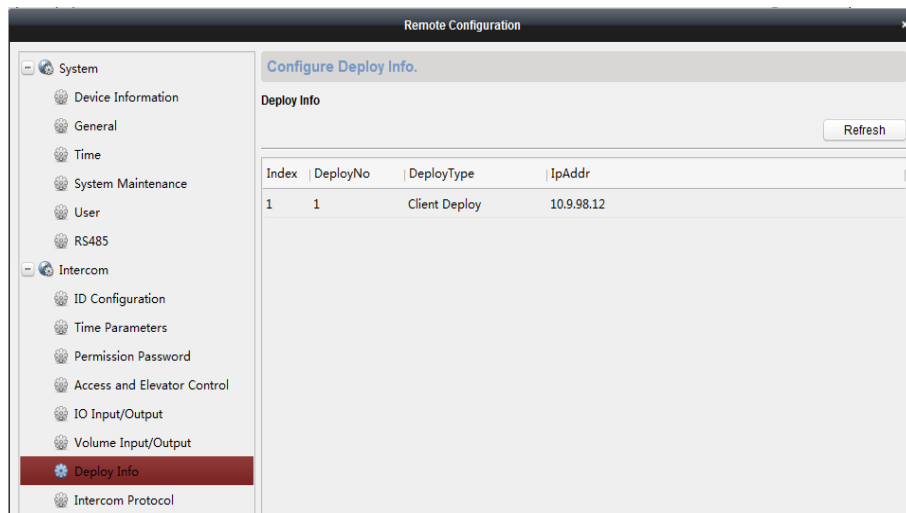
- to the cloud and support Hik-Connect application.
- (3) The –W indoor station use both Wi-Fi and UTP, when the Wi-Fi can connect to the internet, it can connect to the cloud and support Hik-Connect application.
9. Main indoor station and indoor extensions can call between each other:
Dialing format: 0-No. Main indoor No. is 0, other extension is 1 to 5.
10. When Indoor station/master station monitoring door station, there is a icon '**Enable**' to trigger 2-way audio between indoor station and door station(only support in private sip mode, standard sip mode cannot support).
11. When monitoring door station, iVMS4200 can also enable two way audio with door station. It is not recommended to do video intercom between indoor station and door station when iVMS4200 two way audio is enabled with door station.



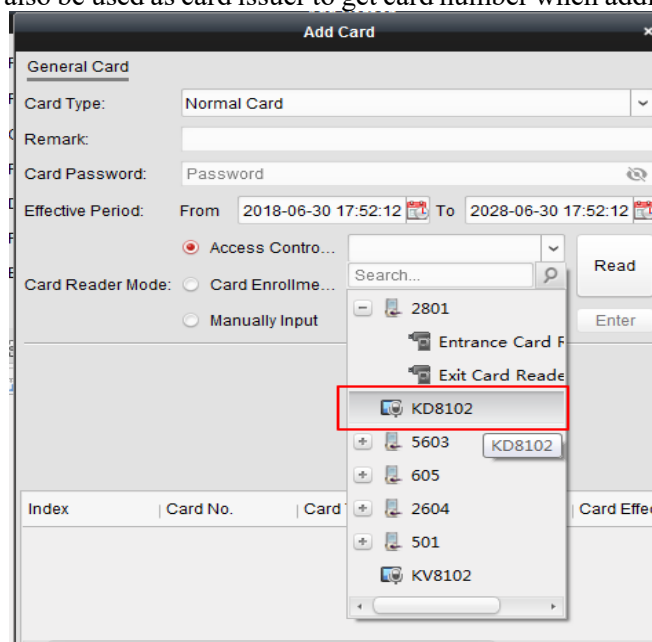
12. Both KD&KV series door station can call iVMS4200. For KV series, long press call button to call iVMS4200 by default, or short press call button by setting the call mode in iVMS4200.
13. Door station can also upload un-authentication card swiping record to iVMS4200.

In...	Alarm Time	Alarm Source	Alarm Details	Alarm Content	Live View	Send E...	Video ...
99	2018-06-30 17:45:24	Door Station:KD8102 Came...	Trigger Camera: Camera1_10.9...	Video Intercom Event			
98	2018-06-30 17:45:15	Door Station:KD8102	Card Number: 4043496675	Illegal Card Event			

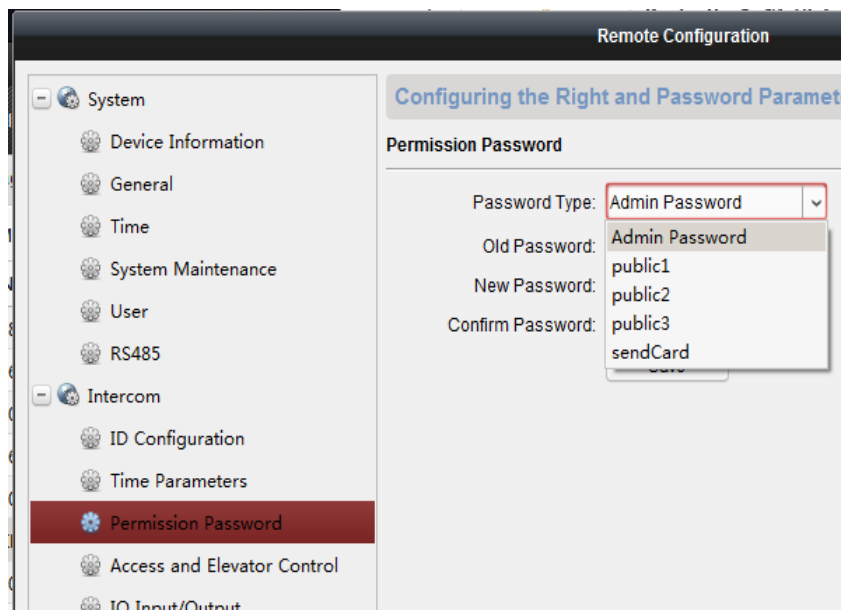
14. Door station and indoor station can be armed by multiple channels(maximum 8). Alarm information will upload to every arming channel, for example iVMS4200 and NVR, and iVMS4200 can show arming channel list in **remote config>intercom>arm information**



15. Door station can also be used as card issuer to get card number when adding card in iVMS4200.



16. Door station can issue card either by swipe master card or input issue card password locally. Door station's issue card password (6 bits issue card password) can be set on iVMS4200.
17. iVMS4200 support to set door station's own public unlocking password(3 public unlocking passwords).



18. One button push to turn off indoor station screen.
19. Support domain NTP server address for time adjusting.
20. The alarm-in port on indoor station can work as a ring doorbell port. If this is a “on - off” button connect to the port, and you push the button, then there will be a ringtone made by indoor station.

Modified Features

1. Indoor station has room number and floor number. Room number range is 1~9999 and floor number range is 1-999.
Floor number is only used for elevator controller. If there is no elevator controller in the system, then no need to set floor number:

The screenshot shows a configuration form for an indoor station. It includes the following fields: 'Device Type' (set to 'Indoor Station'), 'Room No.' (set to '101'), and 'Floor No.' (set to '1'). A tooltip is visible next to the 'Floor No.' field, stating 'room num range is 1-9999'. A 'Save' button is located at the bottom of the form.

2. Activation Password can support maximum 16 bits.
3. Improve video stream stability in Hik-Connect, support P2P streaming.
4. KD8 series door station supports 10000 cards when it is in door station mode and 50000 cards in outer door station mode;
KD3002 door station supports 10000 cards when it is in door station mode and 10000 cards in outer door station mode;
KV series villa station supports 2500 cards.



Customer Impact and Recommended Action

This new firmware upgrade is to improve product performance, and will take effect automatically after upgrading from previous versions. We'd like to inform you the above changes. Also, we are sorry for any possible inconvenience of use-habit changes caused by this action.

For questions or concerns, please contact our local technical support team.

Note:

- Hikvision has all rights to alter, modify and cancel this notice.
- Hikvision doesn't give any guarantee for old models' stock.
- Hikvision is not liable for any typing or printing errors.
- For special model's change details, please contact our local technical support team.

Hikvision Digital Technology CO., Ltd.
No. 555 Qianmo Road, Binjiang District, Hangzhou
310052, China
Tel: +86-571-8807-5998
FAX: +86-571-8993-5635