



HIKVISION EUROPE B.V.

How to Take a Screenshot on Local Interface of Indoor Station

Take DS-KH8350-WTE1 as an Example

Product:	DS-KH8350-WTE1
Publisher:	DengYanan
Version:	V.R 2019.4.23
File:	tftpd32/SecureCRT



Hikvision Europe B.V.

www.hikvision.com/europe

product.eu@hikvision.com

Purpose

Knowing how to take screenshot on local interface of indoor station will bring us much convenience when we help client solve problems or when we write some configuration guidance documents considering indoor station.

Preparation

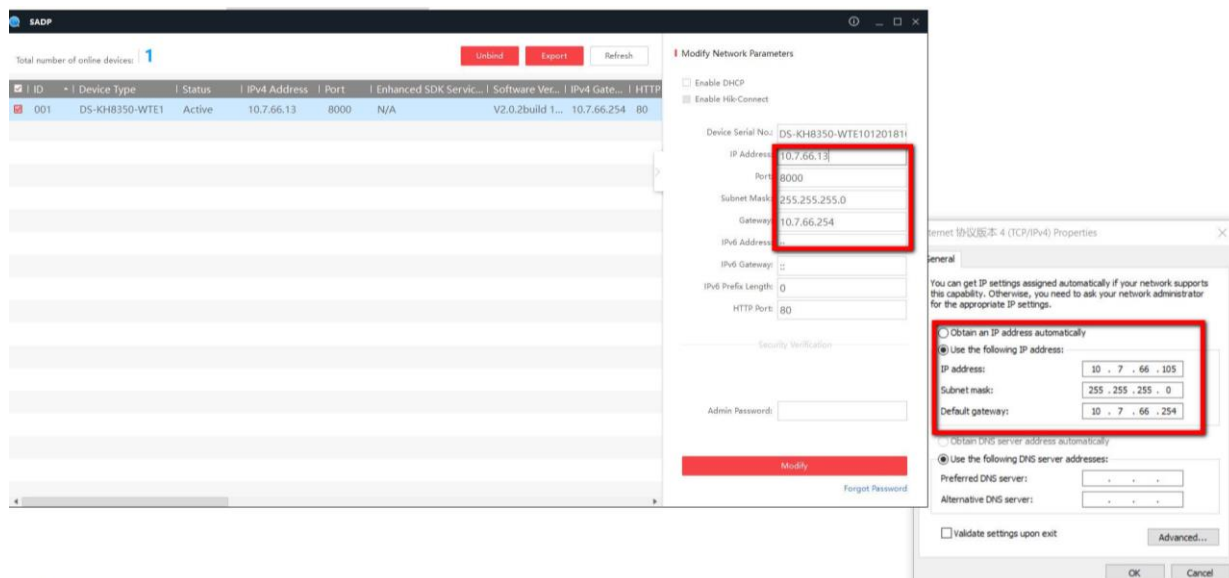
Involved software or tools to realize the function of this document.

1. Tftpd32 (Tftp server)
2. SecureCRT
3. Debug tool: Serial Port Cable/4PIN-RS232/RJ45 convertor board

Steps

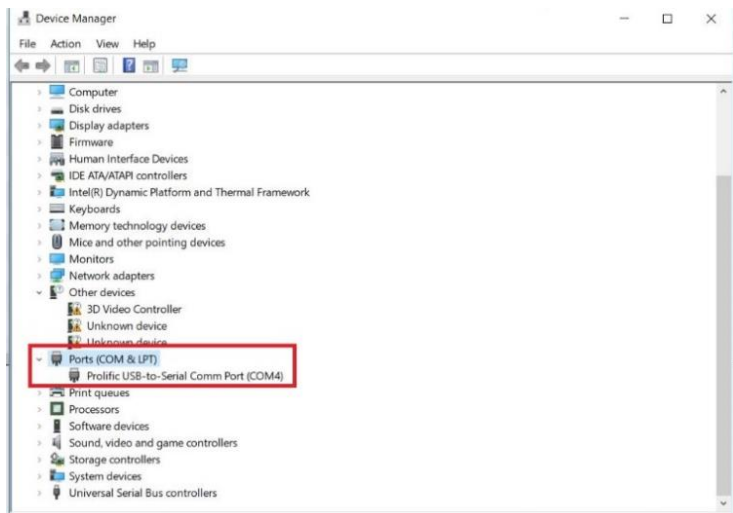
Steps 1 Serial Port Connection

1. Turn off Wi-Fi Connection of PC. Connect indoor station and PC to the same switch and ensure that device and computer are under the same network subnet;

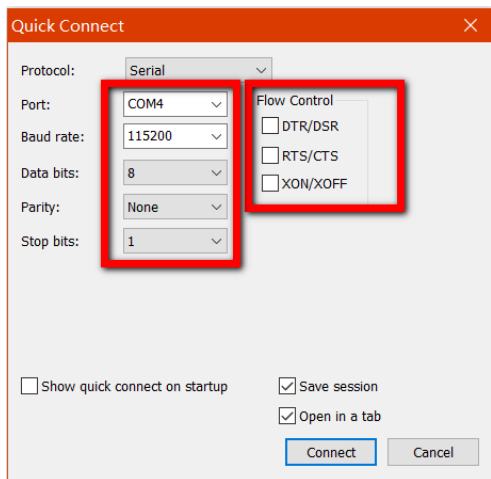


2. Connect indoor station's debug port and PC com port;
3. Confirm which COM port is used on PC;



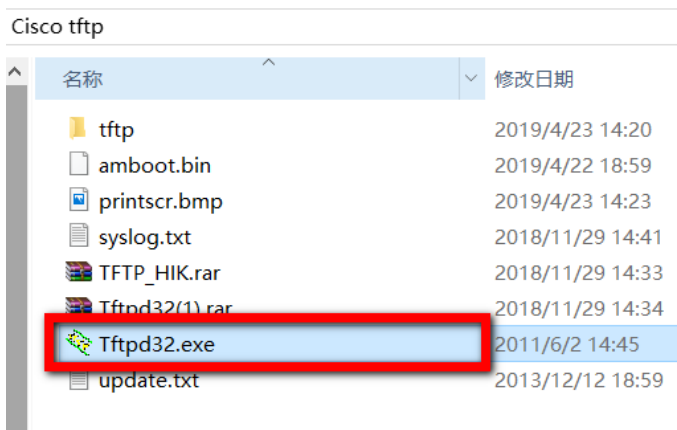


4. Open SecureCRT and set parameters as picture below. Port should be set as the serial port which you use. Baud rate should be set as 115200. The Parity should be set as None; If "RTS/CTS" is selected, you cannot enter commands.



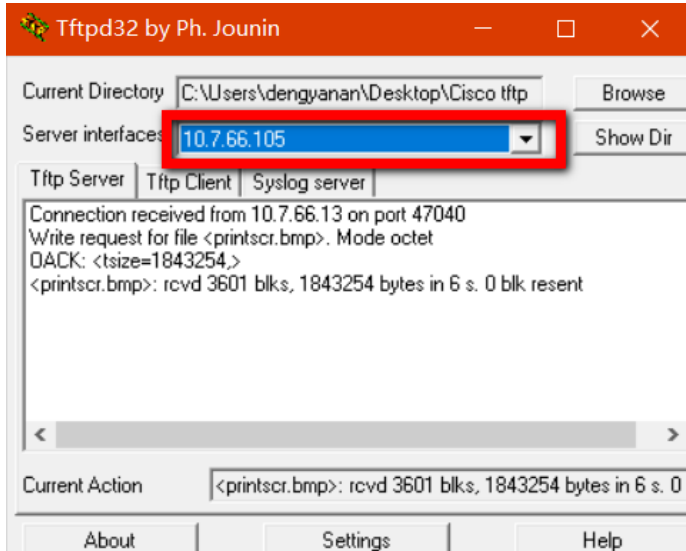
Step 2 Open Tftp Server for Preparation

1. Open tftp server, which is used for transferring picture from device to computer;



2. Check Tftp Server IP, which is the same to PC's IP address;





Step 3 Enter Debug Mode

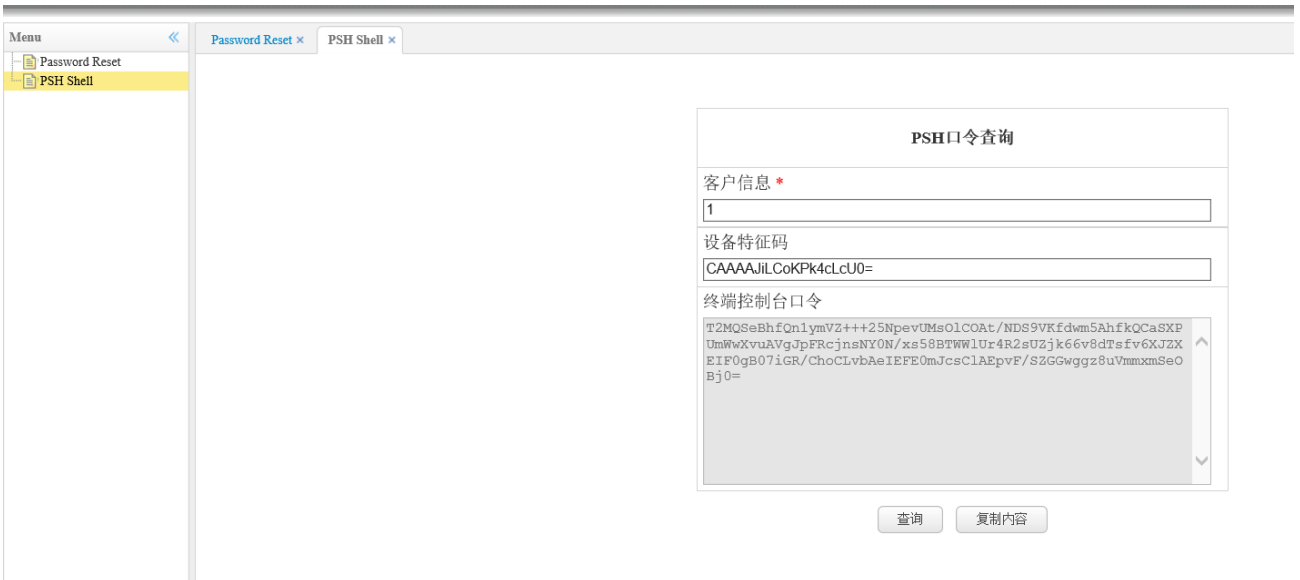
1. Input "zhimakaimen" and then you'll get a string of text as condition code of device;

```
zhimakaimen
CAAAAJiLCoKPk0cDo3U=
Password:
```

2. To get the password:

Copy Device Key, and go to OA> PSH Shell website interface, Past Device Key to get security code;

(For customers, please copy and send device key to Hikvision technique engineer, they will send back security code);



3. Copy security key and past security code to enter Debug Mode

```
zhimakaimen
CAAAAJiLCoKPk0cDo3U=
Password:
Enter Debug Mode.
```



Step 4 Input Commands to take screenshot

1. Login device and enter "root" mode

Input "su"

Input device admin password

```
zhimakaimen
CAAAAjILCOKPk0cDo3U=
Password:
Enter Debug Mode.

BusyBox v1.29.1 (2018-09-04 16:51:46 CST) built-in shell (ash)
Enter 'help' for a list of built-in commands.
[guest@dvr dvs ] $ su
Password:
Killed
[root@dvr dvs ] # cd home
```

2. Enter "home" file and then enter "app" file

Input "cd home"

Input "cd app"

```
[guest@dvr dvs ] $ su
Password:
Killed
[root@dvr dvs ] # cd home
[root@dvr dvs home] # cd app
```

3. Print screen

Input "ls"

Input "guiDebug hiklinux 10"

```
# zhimakaimen
CAAAAjILCOKPk0cDo3U=
Password:
Incorrect Password. 4 Times Left
# zhimakaimen
CAAAAjILCOKPk0cDo3U=
Password:
Enter Debug Mode.

BusyBox v1.29.1 (2018-09-04 16:51:46 CST) built-in shell (ash)
Enter 'help' for a list of built-in commands.

[guest@dvr dvs ] $ su
Password:
Killed
[root@dvr dvs ] # cd home
[root@dvr dvs home] # cd app
[root@dvr dvs app] # ls
iniGUI.cfg          libosip2.so
audio              libosipparser2.so
firmware.bin       log_231970650.20190423140905
font               picture
ip1                printscr.bmp
libexosip2.so      sysres
[root@dvr dvs app] # guiDebug hiklinux 10
=====arg0:10, arg1:0
~~~~~ Started Print Screen!!!
~~~~~ End Print Screen!!!
```

4. Transfer screenshot to tftp server

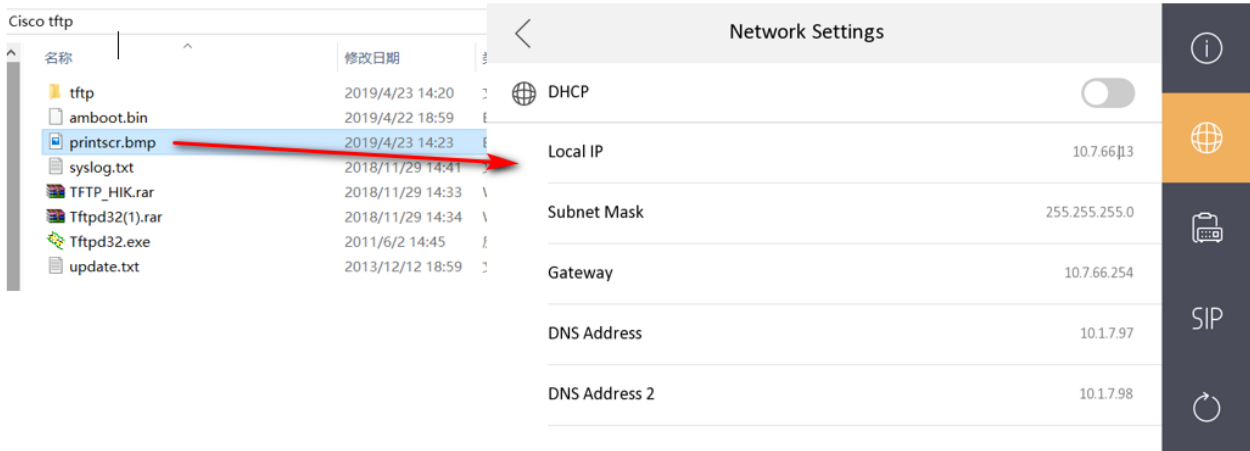
Input "busybox tftp -pr printscr.bmp 10.7.66.105"

(Here, the IP address should be tftp server's IP address)

```
=====arg0:10, arg1:0
~~~~~ Started Print Screen!!!
~~~~~ End Print Screen!!!
[guest@dvr dvs ] # host parser:address:3.0.230.212
[root@dvr dvs app] # busybox tftp -pr printscr.bmp 10.7.66.105
printscr.bmp 13% |*****| 250k 0:00:06 ETAhost parser:address:3.0.230.212
printscr.bmp 48% |*****| 868k 0:00:03 ETAhost parser:address:13.251.8.192
printscr.bmp 65% |*****| 1180k 0:00:02 ETAhost parser:address:52.74.168.35
printscr.bmp 100% |*****| 1800k 0:00:00 ETA
```



Step 5 Check print-screen on tftp server



Note: Conclusion:

```
#zhimakaimen
password
#su
#admin password
#cd home
#cd app
#ls
#guiDebug hiklinux 10
#busybox tftp -pr printscr.bmp 10.7.66.105
```

```
zhimakaimen
CAAAAFqD+7CZM$TsuTo=
Password
```

Enter Debug Mode.

BusyBox v1.29.1 (2018-09-04 16:51:46 CST) built-in shell (ash)
Enter 'help' for a list of built-in commands.

```
[guest@dvr dvs ] $ su
Password: host parser:address:52.74.168.35
```

```
killed
[root@dvr dvs ] # cd home
[root@dvr dvs home] # host parser:address:52.74.168.35
host parser:address:13.251.8.192
host parser:address:3.0.230.212
```

```
cd app
[root@dvr dvs app] # host parser:address:3.0.230.212
```

```
ls
libexosip2.so
libosip2.so
libosipparser2.so
log_224235550.20190423152929
picture
sysres
```

```
[root@dvr dvs app] # host parser:address:3.0.230.212
host parser:address:3.0.230.212
```

```
guiDebug hiklinux 10
```

```
====arg0:10, arg1:0
~~~~~ Started Print Screen!!!
~~~~~ End Print Screen!!!!
```

```
[ERR][2019-04-23 15:48:20][net/sdkService/sdkUpload.c #457][@connects sdkServer]: server addr is invalid
```

```
[root@dvr dvs app] # host parser:address:3.0.230.212
busybox tftp -pr printscr.bmp 10.7.66.105
```

printscr.bmp	13%	*****	250k	0:00:06	ETAhost	parser:address:3.0.230.212
printscr.bmp	48%	*****	868k	0:00:03	ETAhost	parser:address:13.251.8.192
printscr.bmp	65%	*****	1180k	0:00:02	ETAhost	parser:address:52.74.168.35
printscr.bmp	100%	*****	1800k	0:00:00	ETA	