

Title:	How to Upgrade D8E series Card Enrollment Station	Version:	v1.0	Date:	12/10/2017
Product:	Access Control Device	Page:	1 of 4		



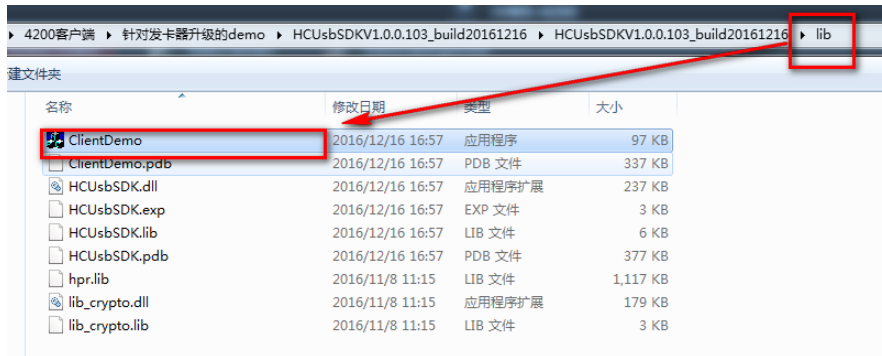
How to Upgrade D8E series Card Enrollment Station

Preparation

In this document, the card enrollment station includes DS-K1F100-D8E and DS-K1F180-D8E;
Make sure you have already got the V2.1.0 firmware and USB Demo for card enrollment station.

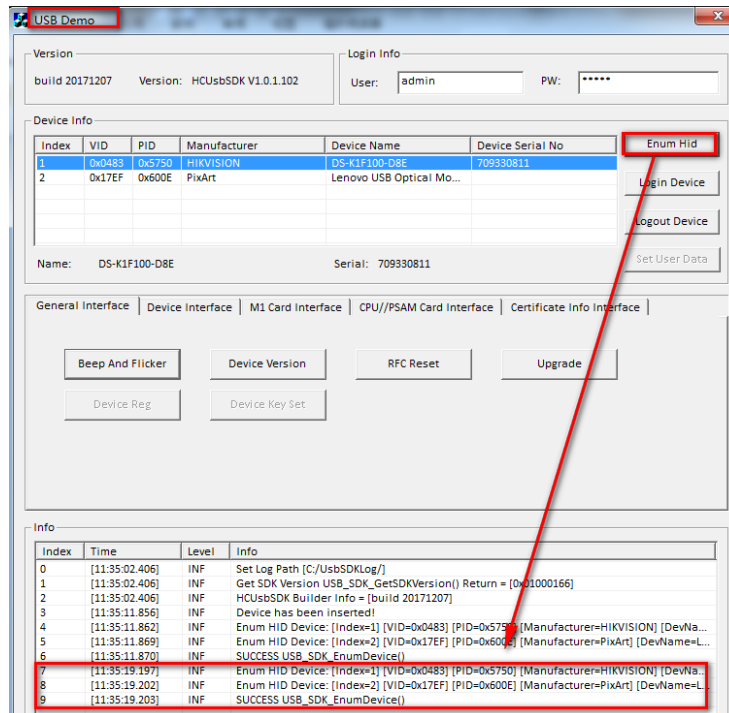
Step 1:

Unzip the package and enter **lib** folder, and double-click to run **ClientDemo**;



Step 2:

Connect your D8E series card enrollment station by USB, and you can find your device on USB Demo;
Select your device and click **Enum Hid**, get 'SUCCESS USB_SDK_EnumDevice()';

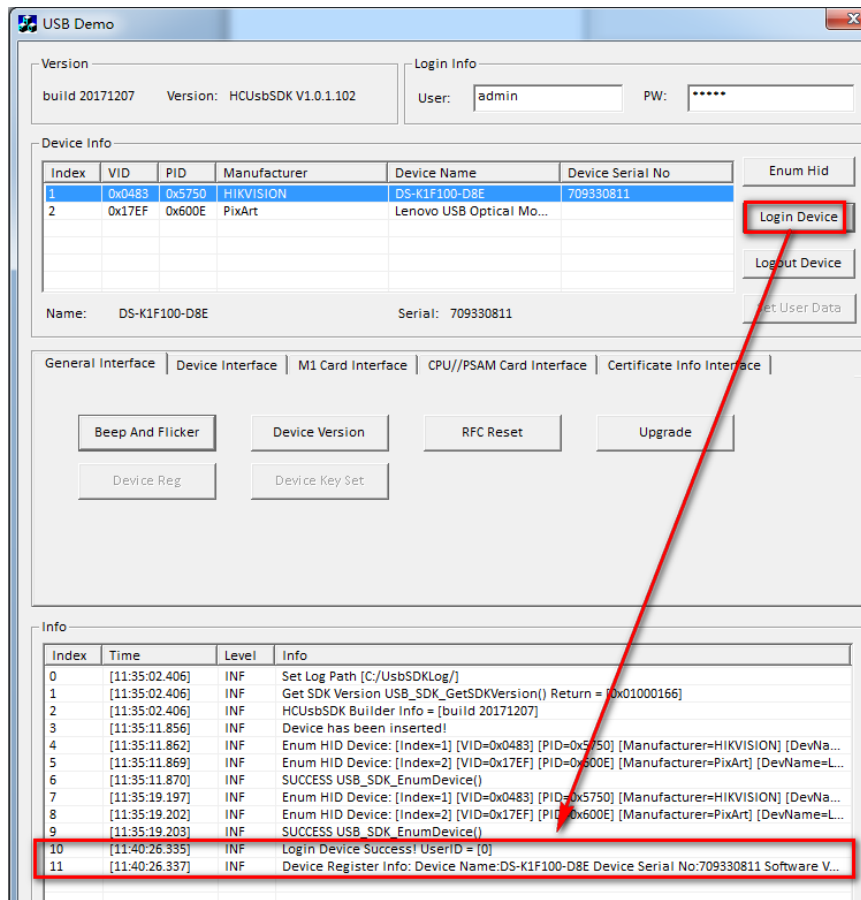


Title:	How to Upgrade D8E series Card Enrollment Station	Version:	v1.0	Date:	12/10/2017
Product:	Access Control Device	Page:	2 of 4		



Step 3:

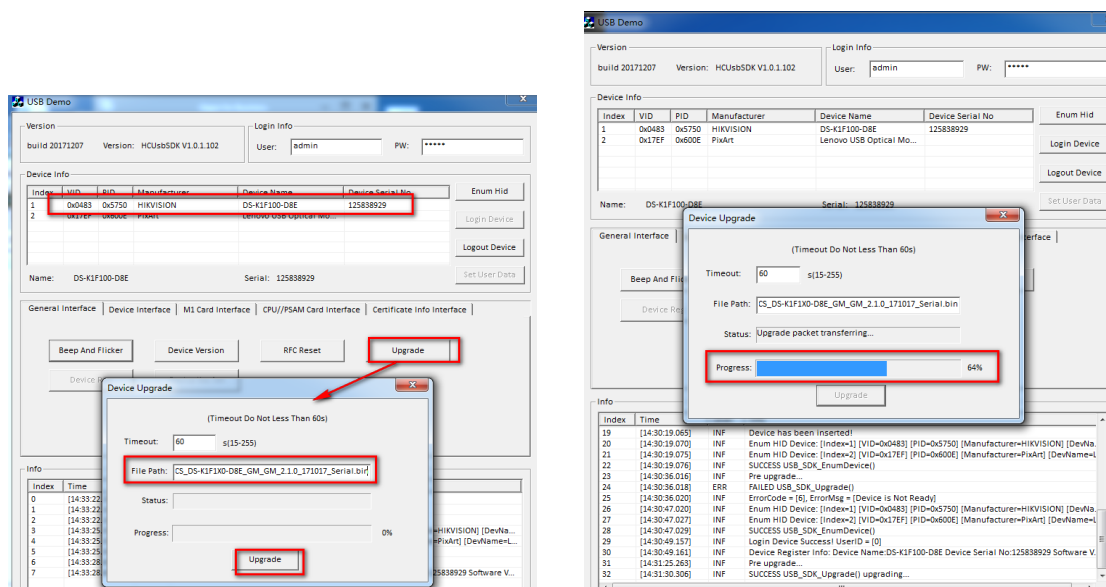
Select your device and click **Login Device**, get 'Login Device Success!';



Step 4:

Select your device and click **Upgrade**, you will enter Device Upgrade interface;

Copy your firmware path to 'File Path', and click **Upgrade**;



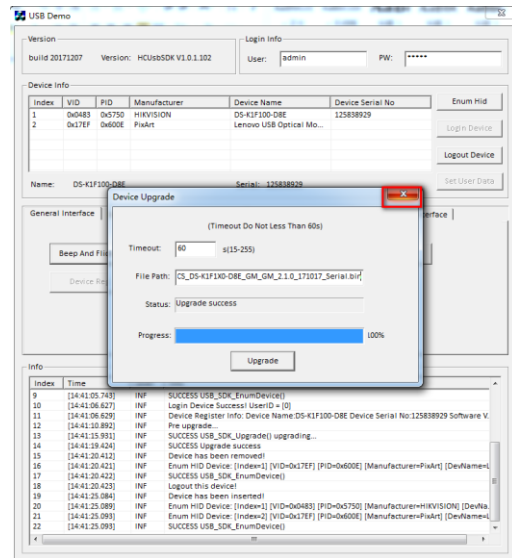
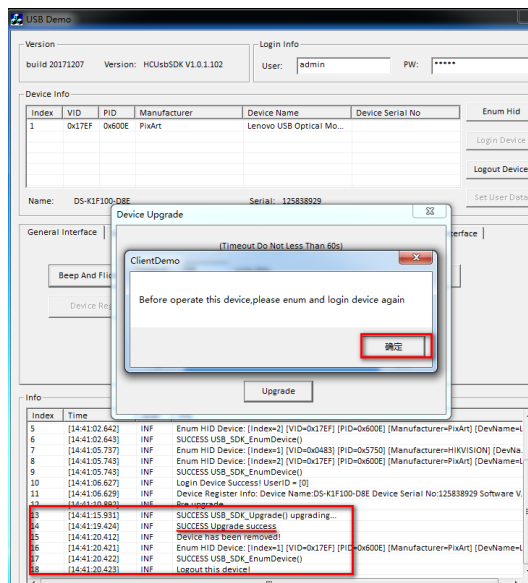
Title:	How to Upgrade D8E series Card Enrollment Station	Version:	v1.0	Date:	12/10/2017
Product:	Access Control Device	Page:	3 of 4		



Step 5:

Upgrade succeeded, you will see ‘SUCCESS Upgrade success’;

Please close ClientDemo interface, and then close Device Upgrade interface;



Step 6:

Remove your device and run your iVMS-4200 client, and connect your card enrollment station to your computer by USB. Now you can use it to issue card.

Title:	How to Upgrade D8E series Card Enrollment Station	Version:	v1.0	Date:	12/10/2017
Product:	Access Control Device	Page:	4 of 4		



First Choice for Security Professionals
***HIK*VISION Technical Support**