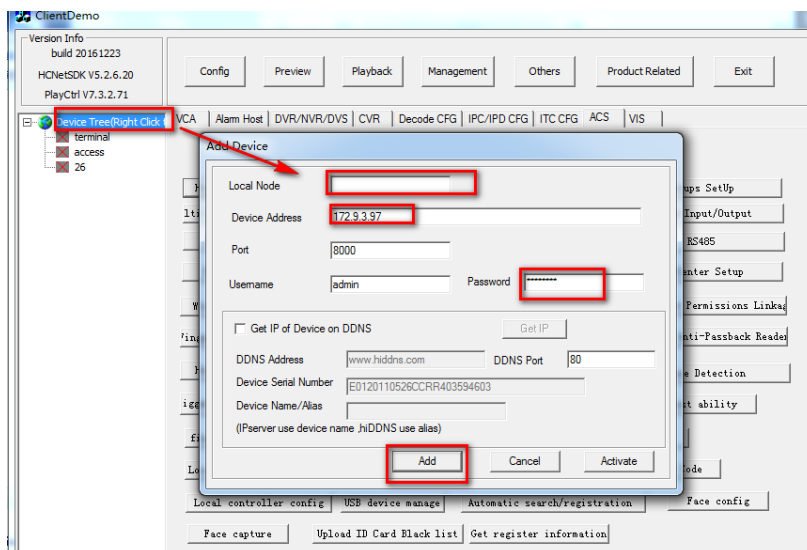
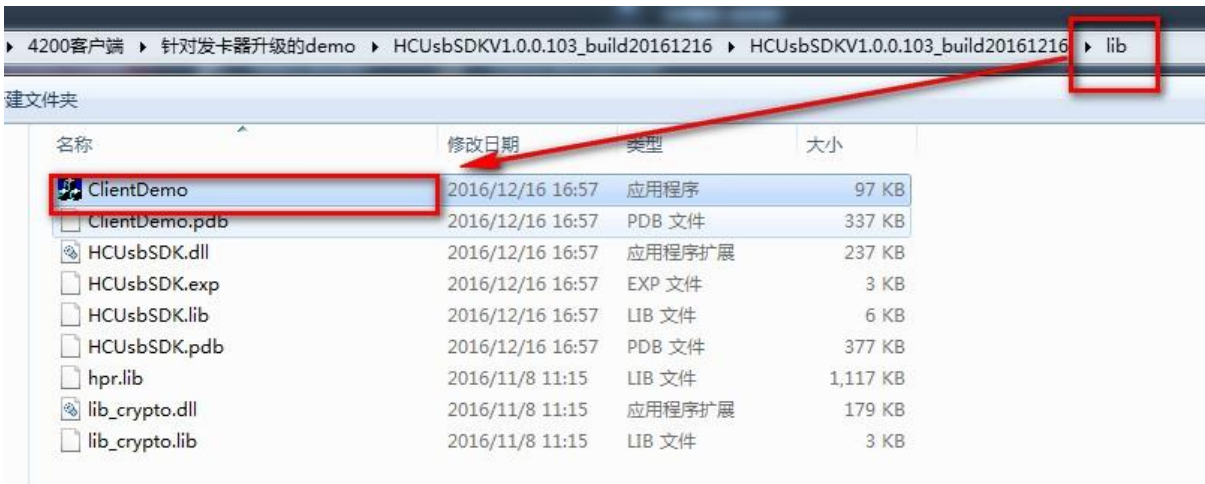




EUROPEAN TECHNICAL CENTER

FIRMWARE RELEASE NOTE



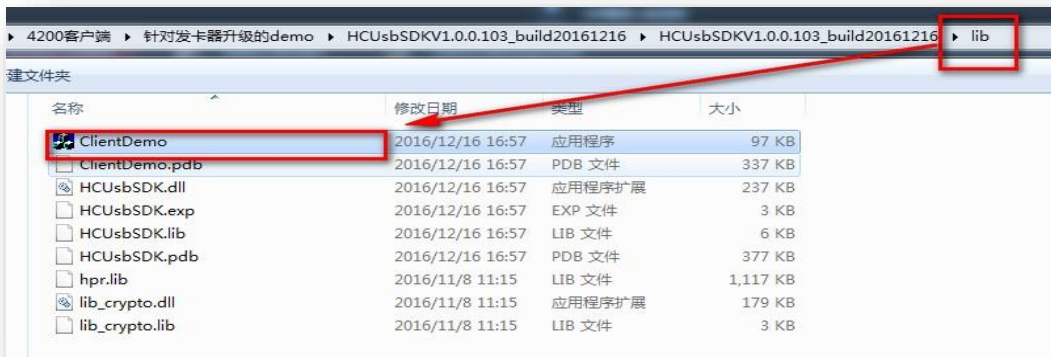
How to Upgrade Face Recognition Terminals

Face recognition terminals firmware upgrade procedure consists of 2 parts and 2 firmware:

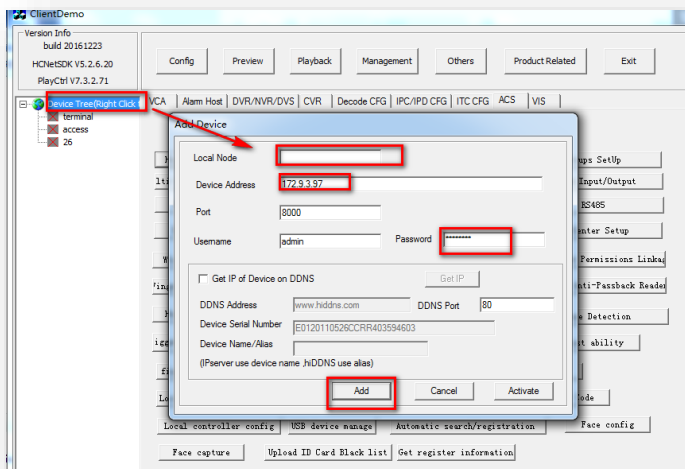
1. MCU (microcontroller) upgrade – via “SDKdemo” app
2. ARM (device) upgrade - via “SDKdemo” app or iVMS-4200

Note: Make sure MCU is always upgraded first!

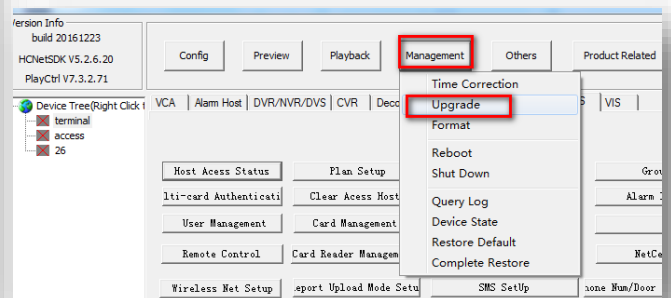
Run the SDK Demo app by opening **ClientDemo.Exe** in the **LIB** folder of the archive.



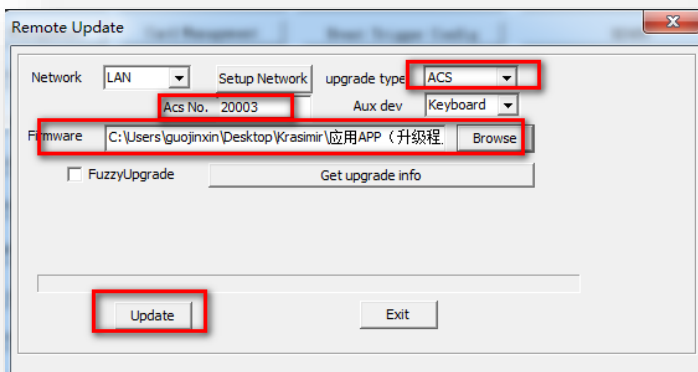
1. Upgrade MCU firmware



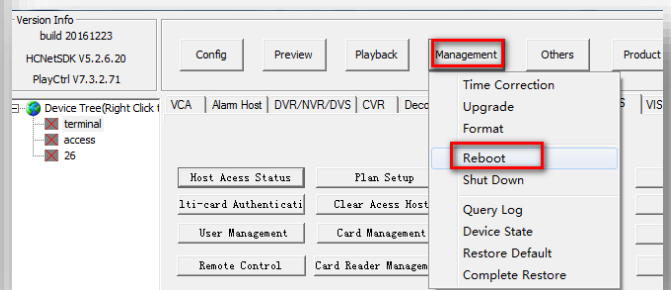
- Add the device;



- Click Management -> Upgrade;

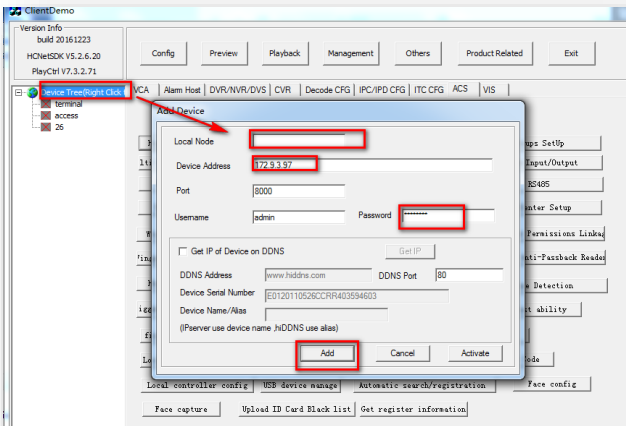


- Upgrade MCU;

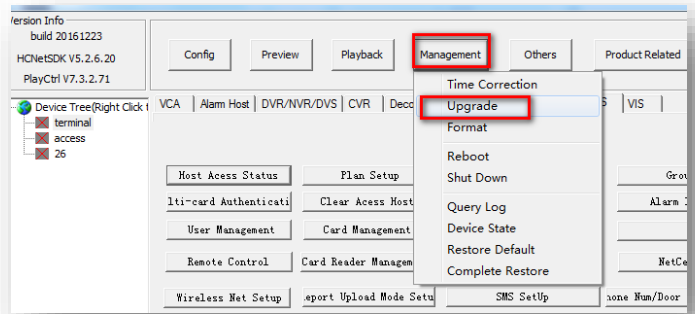


- Reboot the device;

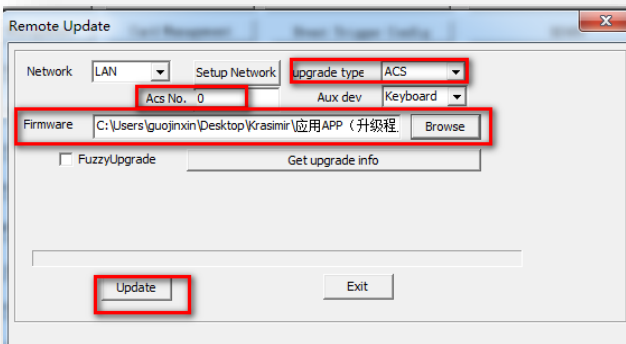
2. Upgrade ARM firmware:



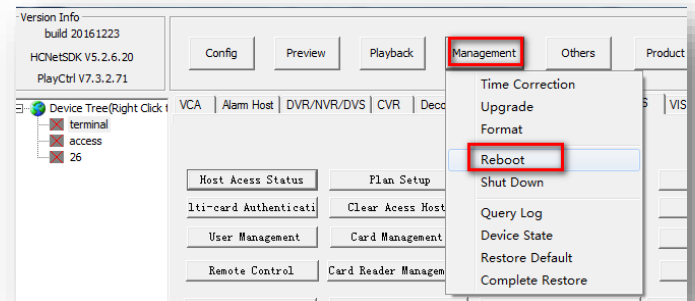
- Add a device;



- Click Management -> Upgrade;



- Upgrade ARM;



- Reboot the device;

Customer Impact and Recommended Action

This new firmware upgrade is to improve product performance, and will take effect automatically after upgrading from previous versions. We'd like to inform you for the above changes. Also, we are sorry for any possible inconvenience of use-habit changes caused by this action.

For questions or concerns, please contact our local technical support team.



Note:

Hikvision has all rights to alter, modify and cancel this notice.

Hikvision doesn't give any guarantee for old models' stock.

Hikvision is not liable for any typing or printing errors.

For special model's change details, please contact our local technical support team.

Hikvision Digital Technology CO., Ltd.
No. 555 Qianmo Road, Binjiang District, Hangzhou
310052, China
Tel: +86-571-8807-5998
FAX: +86-571-8993-5635