

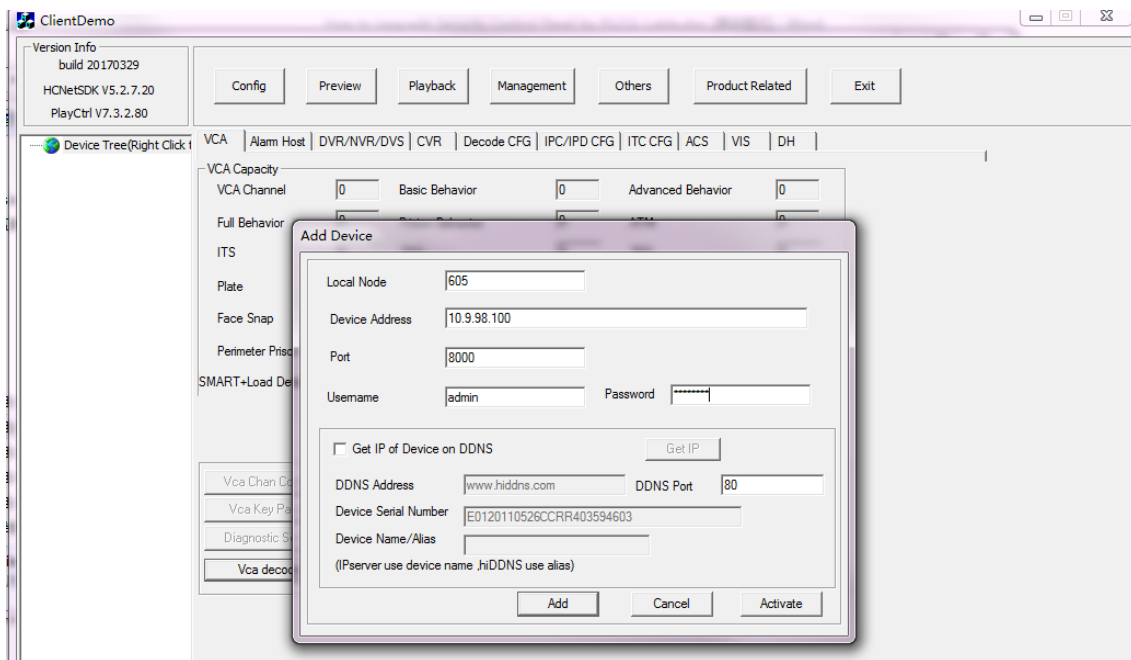
<b>Title:</b>	How to Upgrade Face Recognition Terminal	<b>Version:</b>	v1.0	<b>Date:</b>	2018/6/25
<b>Product:</b>	Access Control Device	<b>Page:</b>	1 of 4		

## Description

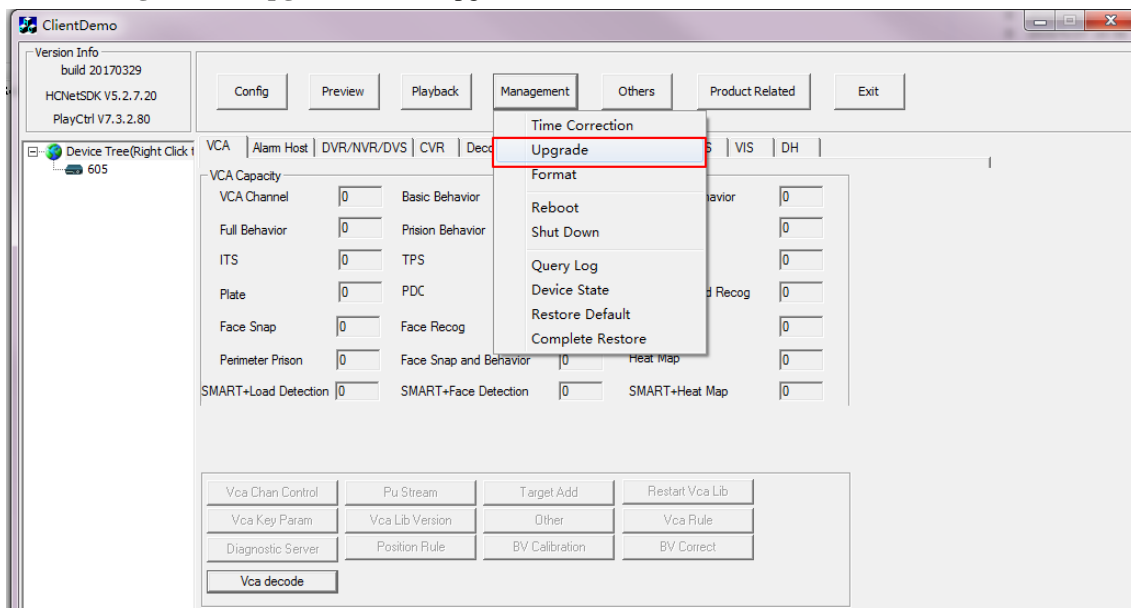
Face recognition terminals, K1T604/605/606 series or K5603-Z have two different firmware in device: MCU and ARM. ARM is for device program, MCU is for Micro-controller. We need upgrade both ARM and MCU when new version released, remember upgrade MCU first, then upgrade ARM. MCU needs SDK demo to upgrade, ARM can be upgraded by either SDKdemo or 4200.

## Steps

1. Add device to SDKdemo:



2. Click **Management > Upgrade** to enter upgrade interface.

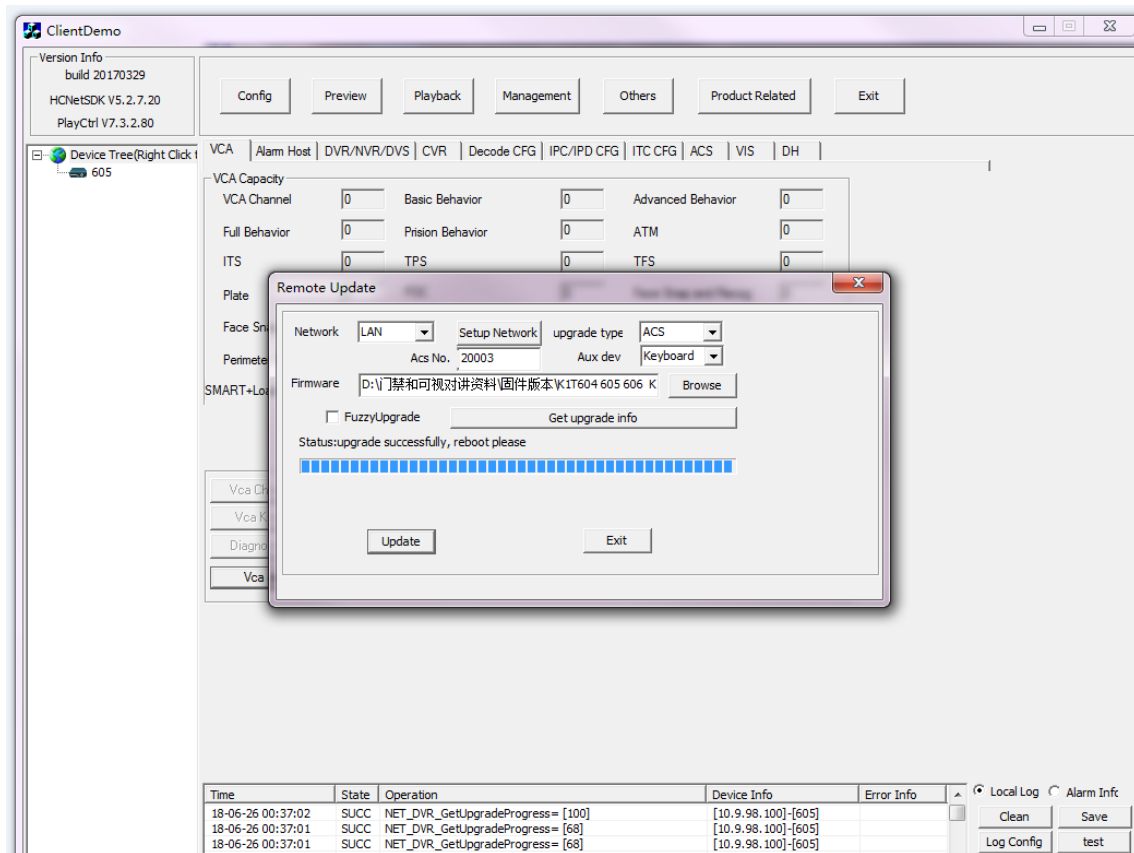
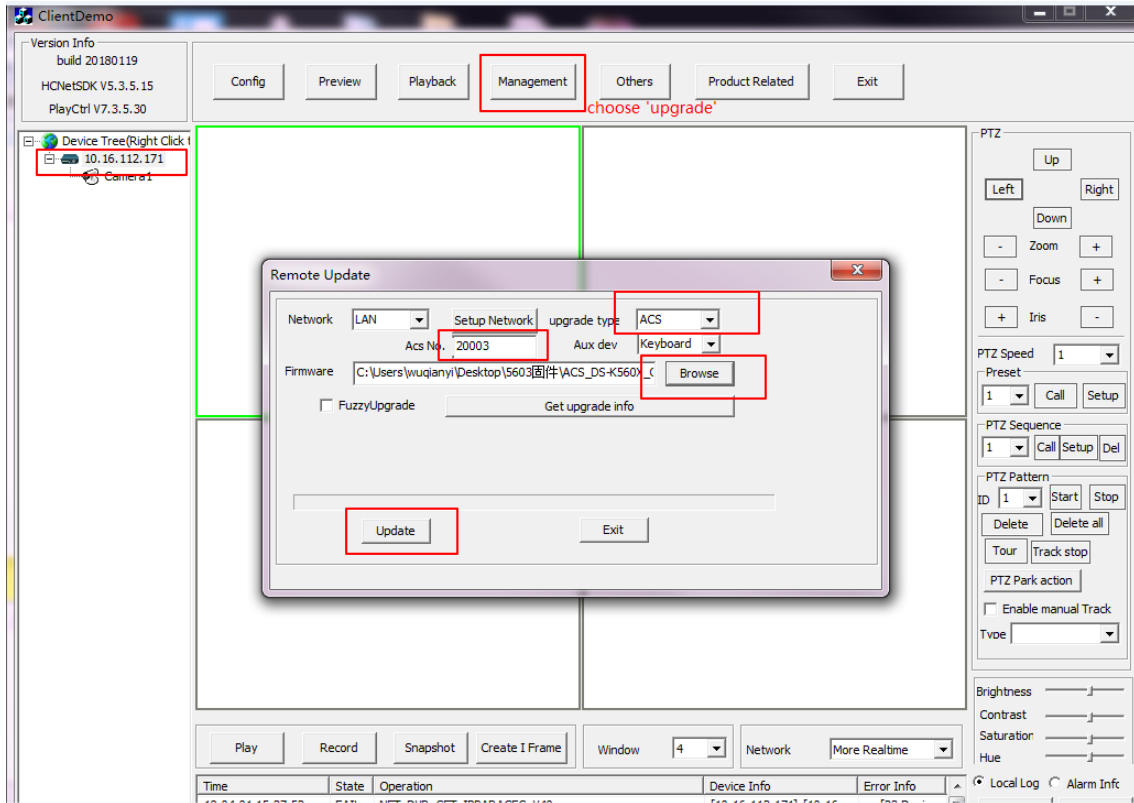


3. Upgrade MCU first, choose upgrade type as ACS, AcS No. as 20003, and choose MCU Net.bin

<b>Title:</b>	How to Upgrade Face Recognition Terminal	<b>Version:</b>	v1.0	<b>Date:</b>	2018/6/25
<b>Product:</b>	Access Control Device	<b>Page:</b>	2 of 4		

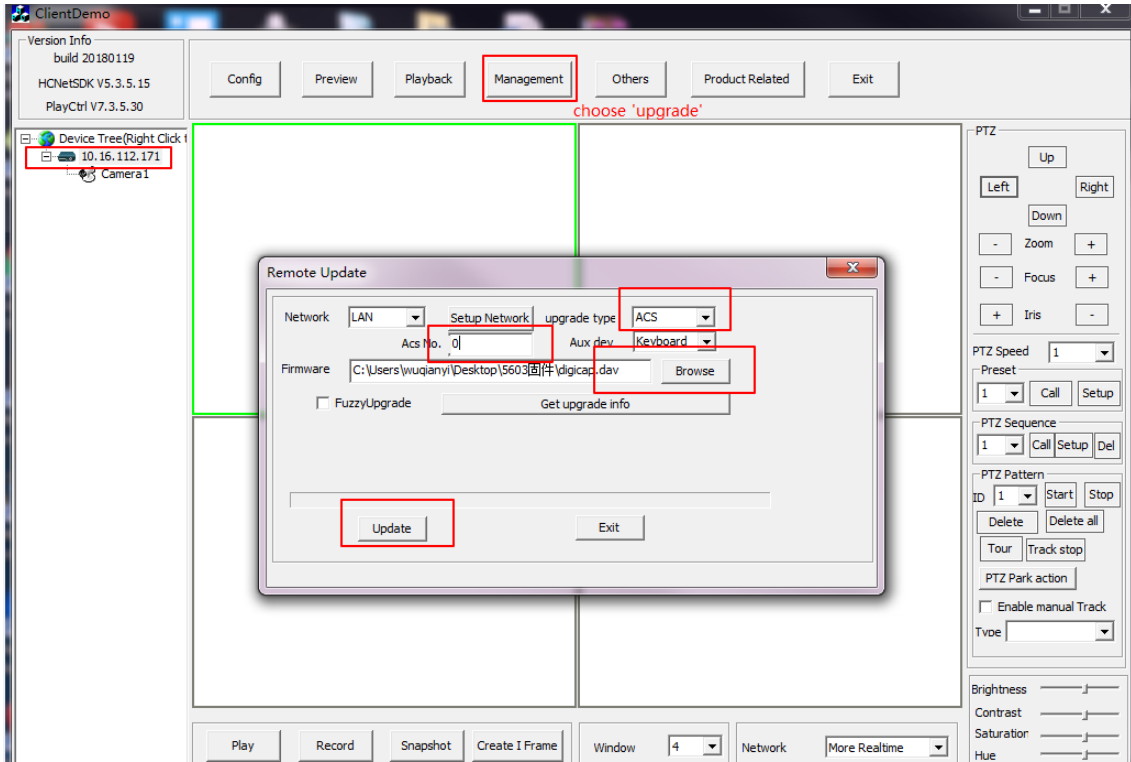


firmware to upgrade.

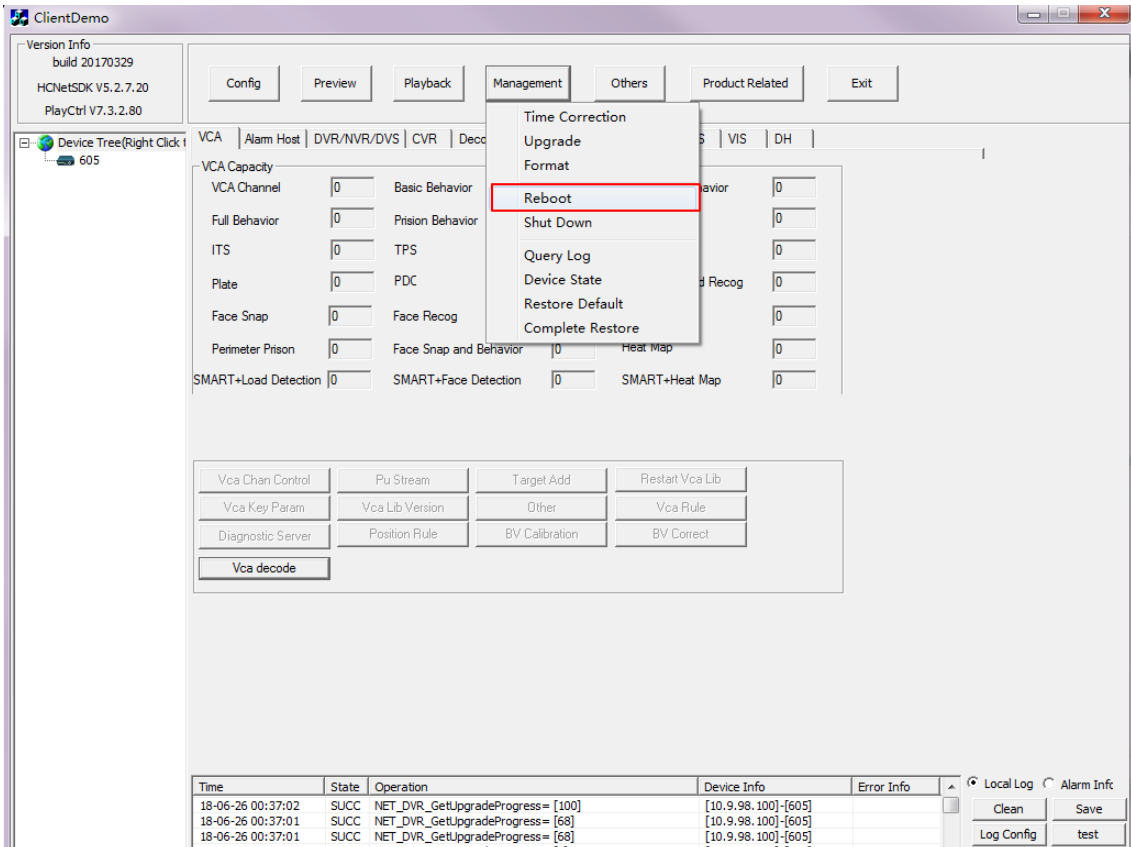


4. After MCU has been upgraded, then upgrade ARM. Choose upgrade type as ACS, Acs No. as 0, and choose ARM firmware to upgrade.

<b>Title:</b>	How to Upgrade Face Recognition Terminal	<b>Version:</b>	v1.0	<b>Date:</b>	2018/6/25
<b>Product:</b>	Access Control Device	<b>Page:</b>	3 of 4		



5. Reboot device after upgrade:



<b>Title:</b>	How to Upgrade Face Recognition Terminal	<b>Version:</b>	v1.0	<b>Date:</b>	2018/6/25
<b>Product:</b>	Access Control Device	<b>Page:</b>	4 of 4		



**First Choice for Security Professionals**  
***HIK*VISION Technical Support**