

## DS-K1T343 Series MinMoe Terminal Release Notes (2023-06-14)

|  |                   |  |
|--|-------------------|--|
| <b>Device Model:</b><br>DS-K1T343EX, DS-K1T343EWX<br>DS-K1T343EFX, DS-K1T343EFWX<br>DS-K1T343MX, DS-K1T343MWX<br>DS-K1T343MFX, DS-K1T343MFWX<br><br><b>Naming Rule:</b><br>M for M1 card, F for fingerprint, W for Wi-Fi | Firmware Version  | ACS_343_F1pro_EN_STD_V3.14.0_build230331<br>ACS_343_F1pro_EN_NEU_V3.14.0_build230331 |
|  | SDK               | Latest baseline version  |
|  | iVMS-4200 Version | Latest baseline version  |

### Reason of Upgrade

Fix bugs, enhance products quality and meet customers' requirements.

### Modified Features

1. Fixed known security vulnerabilities

for details, please refer:

<https://www.hikvision.com/en/support/cybersecurity/security-advisory/security-vulnerability-in-some-hikvision-access-control-intercom/>

## DS-K1T343 Series MinMoe Terminal Release Notes (2022-04-09)

|  |                  |  |
|--|------------------|--|
| <b>Device Model:</b><br>DS-K1T343EX, DS-K1T343EWX<br>DS-K1T343EFX, DS-K1T343EFWX<br>DS-K1T343MX, DS-K1T343MWX<br>DS-K1T343MFX, DS-K1T343MFWX<br><br><b>Naming Rule:</b><br>M for M1 card, F for fingerprint, W for | Firmware Version | ACS_343_F1pro_EN_STD_V3.3.4_build220310<br>ACS_343_F1pro_EN_NEU_V3.3.4_build220310 |
|  | SDK              | Latest baseline version  |

---

|       |                      |                         |
|-------|----------------------|-------------------------|
| Wi-Fi | iVMS-4200<br>Version | Latest baseline version |
|-------|----------------------|-------------------------|

**Reason of Upgrade**

Fix bugs, enhance products quality and meet customers' requirements.

**Modified Features**

2. Optimize fingerprint module performance.

## **DS-K1T343 Series MinMoe Terminal Release Notes (2022-03-09)**

|  |                      |  |
|--|----------------------|--|
| <b>Device Model:</b><br>DS-K1T343EX, DS-K1T343EWX<br>DS-K1T343EFX, DS-K1T343EFWX<br>DS-K1T343MX, DS-K1T343MWX<br>DS-K1T343MFX, DS-K1T343MFWX<br><br><b>Naming Rule:</b><br><b>M</b> for M1 card, <b>F</b> for fingerprint, <b>W</b> for<br>Wi-Fi | Firmware<br>Version  | ACS_343_F1pro_EN_STD_V3.3.4_build220210<br>ACS_343_F1pro_EN_NEU_V3.3.4_build220210 |
|  | SDK                  | Latest baseline version  |
|  | iVMS-4200<br>Version | Latest baseline version  |

**Reason of Upgrade**

Fix bugs, enhance products quality and meet customers' requirements.

**Modified Features**

3. Fix the problem that the device cannot wake up occasionally after running for a long time;

## **DS-K1T343 Series MinMoe Terminal**

## Release Notes (2022-02-09)

|  |                   |   |
|--|-------------------|---|
| <b>Device Model:</b><br>DS-K1T343EX, DS-K1T343EWX<br>DS-K1T343EFX, DS-K1T343EFWX<br>DS-K1T343MX, DS-K1T343MWX<br>DS-K1T343MFX, DS-K1T343MFWX<br><br><b>Naming Rule:</b><br>M for M1 card, F for fingerprint, W for Wi-Fi | Firmware Version  | ARM :<br>ACS_343_F1pro_EN_STD_V3.3.4_build211229<br>ACS_343_F1pro_EN_NEU_V3.3.4_build211229 |
|  | SDK               | Latest baseline version   |
|  | iVMS-4200 Version | Latest baseline version   |

### Reason of Upgrade

Fix bugs, enhance products quality and meet customers' requirements.

### Modified Features

1. Update the driver to be compatible with new fingerprint materials;
2. Fix some ISAPI protocol bugs

## DS-K1T343 Series MinMoe Terminal

## Release Notes (2021-10-23)

|  |                   |   |
|--|-------------------|---|
| <b>Device Model:</b><br>DS-K1T343EX, DS-K1T343EWX<br>DS-K1T343EFX, DS-K1T343EFWX<br>DS-K1T343MX, DS-K1T343MWX<br>DS-K1T343MFX, DS-K1T343MFWX<br><br><b>Naming Rule:</b><br>M for M1 card, F for fingerprint, W for Wi-Fi | Firmware Version  | ARM :<br>ACS_343_F1pro_EN_STD_V3.3.4_build211022<br>ACS_343_F1pro_EN_NEU_V3.3.4_build211022 |
|  | SDK               | Latest baseline version   |
|  | iVMS-4200 Version | Latest baseline version   |

### Reason of Upgrade

Fix bugs, enhance products quality and meet customers' requirements.

## Modified Features

- Update the driver to be compatible with new fingerprint materials;

## DS-K1T343 Series MinMoe Terminal Release Notes (2021-09-17)

|   |                   |   |
|---|-------------------|---|
| <b>Device Model:</b><br>DS-K1T343EX, DS-K1T343EWX<br>DS-K1T343EFX, DS-K1T343EFWX<br>DS-K1T343MX, DS-K1T343MWX<br>DS-K1T343MFX, DS-K1T343MFWX<br><br><b>Naming Rule:</b><br><b>M</b> for M1 card, <b>F</b> for fingerprint, <b>W</b> for Wi-Fi | Firmware Version  | ARM :<br>ACS_343_F1pro_EN_STD_V3.3.4_build210812<br>ACS_343_F1pro_EN_NEU_V3.3.4_build210812 |
|   | SDK               | Latest baseline version   |
|   | iVMS-4200 Version | Latest baseline version   |

## Reason of Upgrade

New model DS-K1T343 series MinMoe terminal first time released.



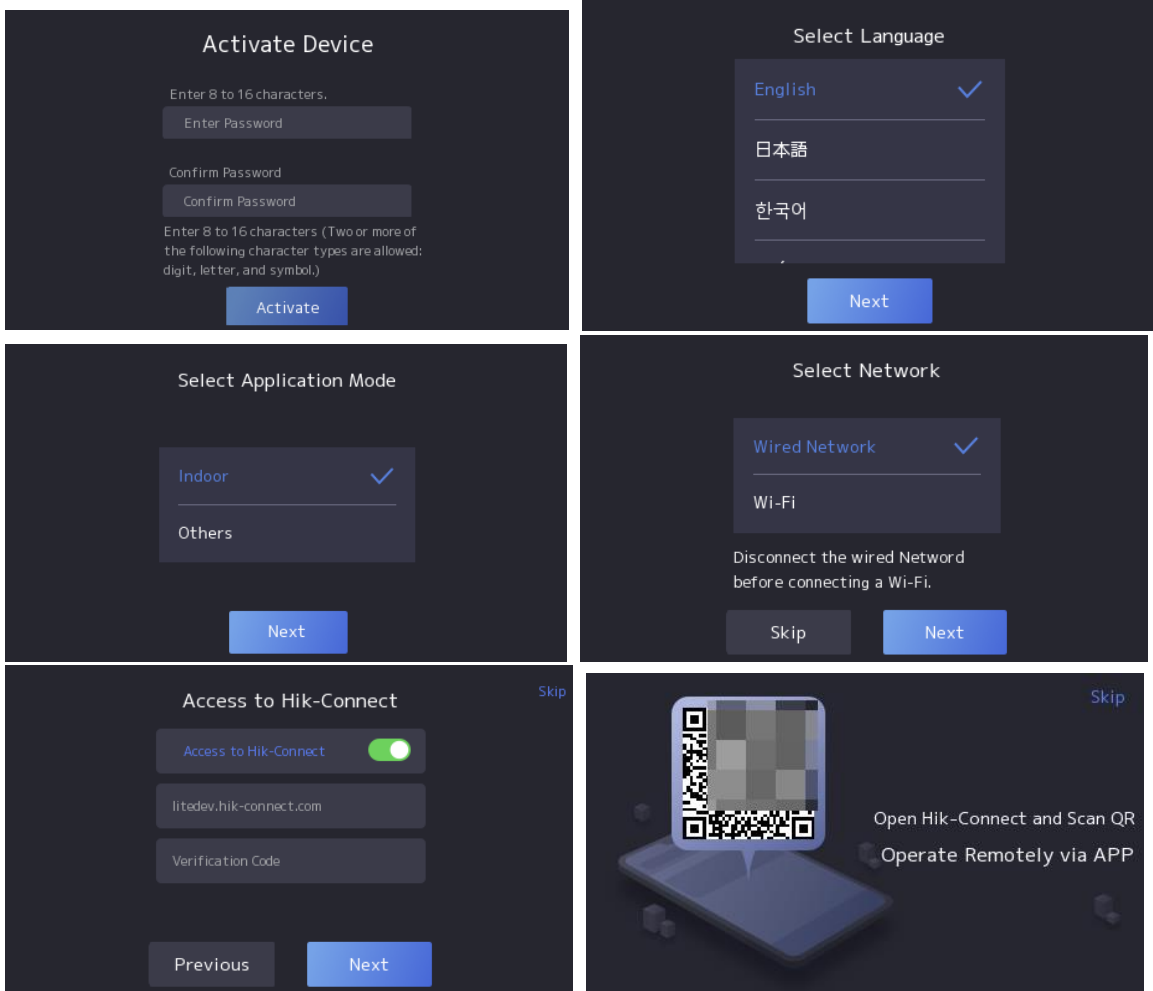
## New Features

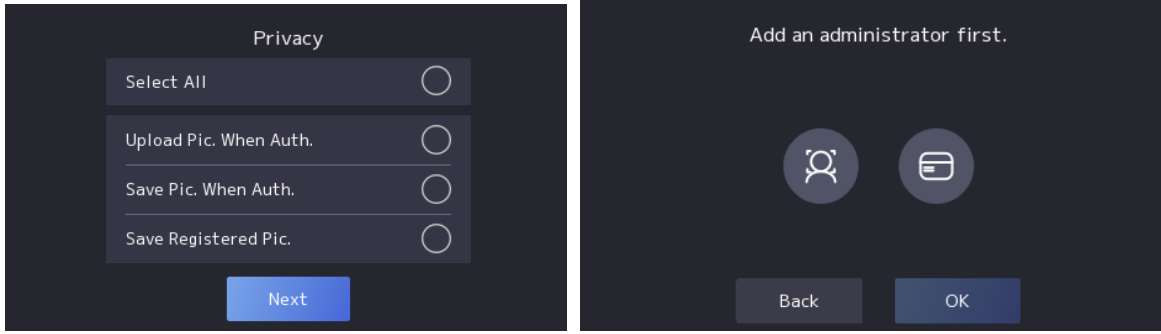
- 4.3 inch capacitive touch screen with large screen ratio, 2 MP wide-angle dual-lens camera with WDR feature;
- Connect external card reader or access controller via RS485 protocol; support Wiegand26/34 output
- Face recognition duration < 0.2 s/User; face recognition accuracy rate ≥ 99%
- Face, card, fingerprint, event capacity**

|             | Face | Card | Fingerprint | Event | Wi-Fi       |
|-------------|------|------|-------------|-------|-------------|
| DS-K1T343EX |      |      | Not support |       | Not support |

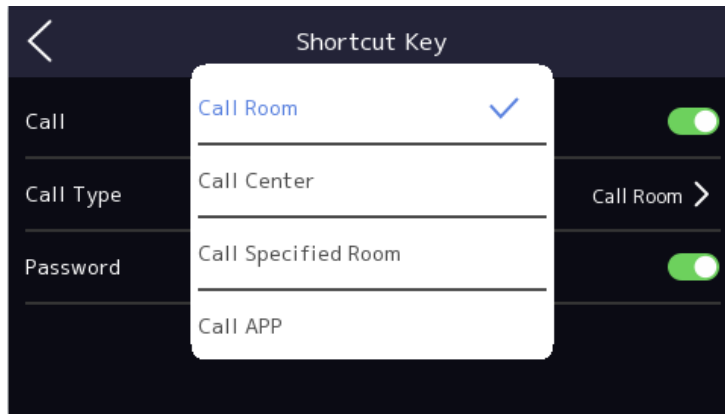
|                      |       |           |             |         |                |
|----------------------|-------|-----------|-------------|---------|----------------|
| <b>DS-K1T343EWX</b>  | 1,500 | 3,000(EM) | Not support | 150,000 | <b>Support</b> |
| <b>DS-K1T343EFX</b>  |       |           | 1,500       |         | Not support    |
| <b>DS-K1T343EFWX</b> |       |           | 1,500       |         | <b>Support</b> |
| <b>DS-K1T343MX</b>   | 1,500 | 3,000(M1) | Not support | 150,000 | Not support    |
| <b>DS-K1T343MWX</b>  |       |           | Not support |         | <b>Support</b> |
| <b>DS-K1T343MFX</b>  |       |           | 1,500       |         | Not support    |
| <b>DS-K1T343MFWX</b> |       |           | 1,500       |         | <b>Support</b> |

5. **ISAPI** protocol makes it easier for integration with third-party software;
6. Remote video intercom and unlock door from **Hik-Connect App** on your mobile/Pad
7. Support **Hik-ProConnect** platform to realize Cloud access control and time attendance management
8. Support **ISUP 5.0** protocol to manage devices located in different locations;
9. When open device for the first time, wizard for activation and basic configuration. Including select language, application mode, select and configure network, Hik-Connect, privacy settings, add administrator face and card

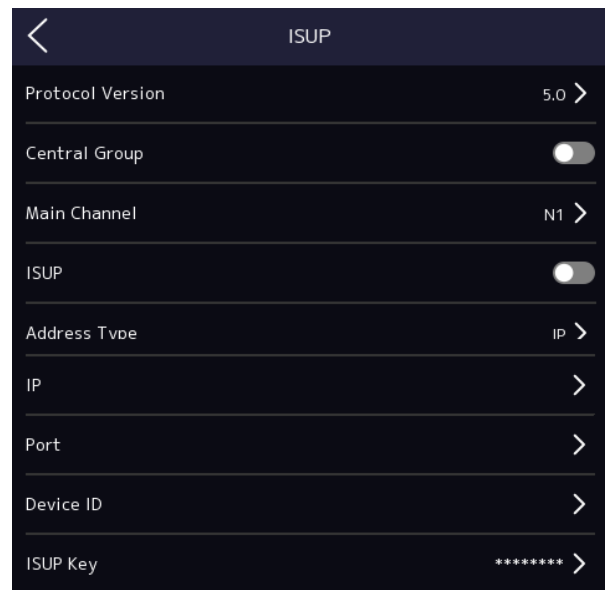
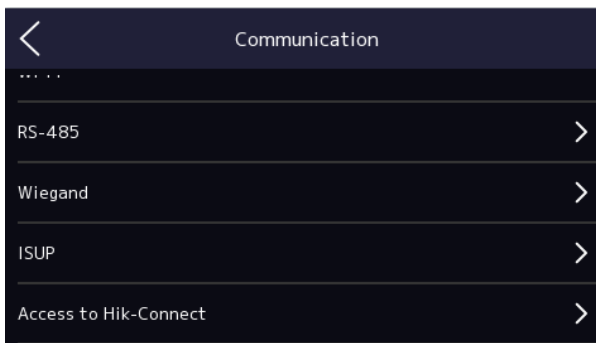


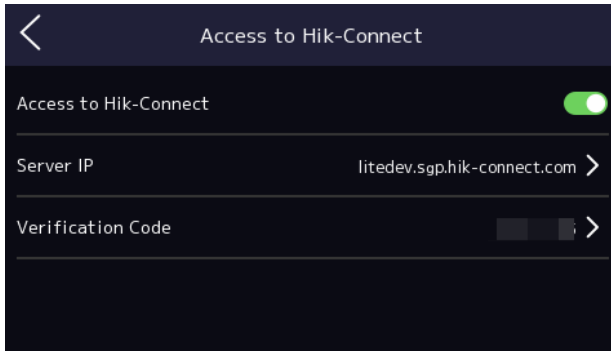


10. Self-defined shortcut key (Call Room, Call Center, Call Specified Room, Call App and Password) on main interface;

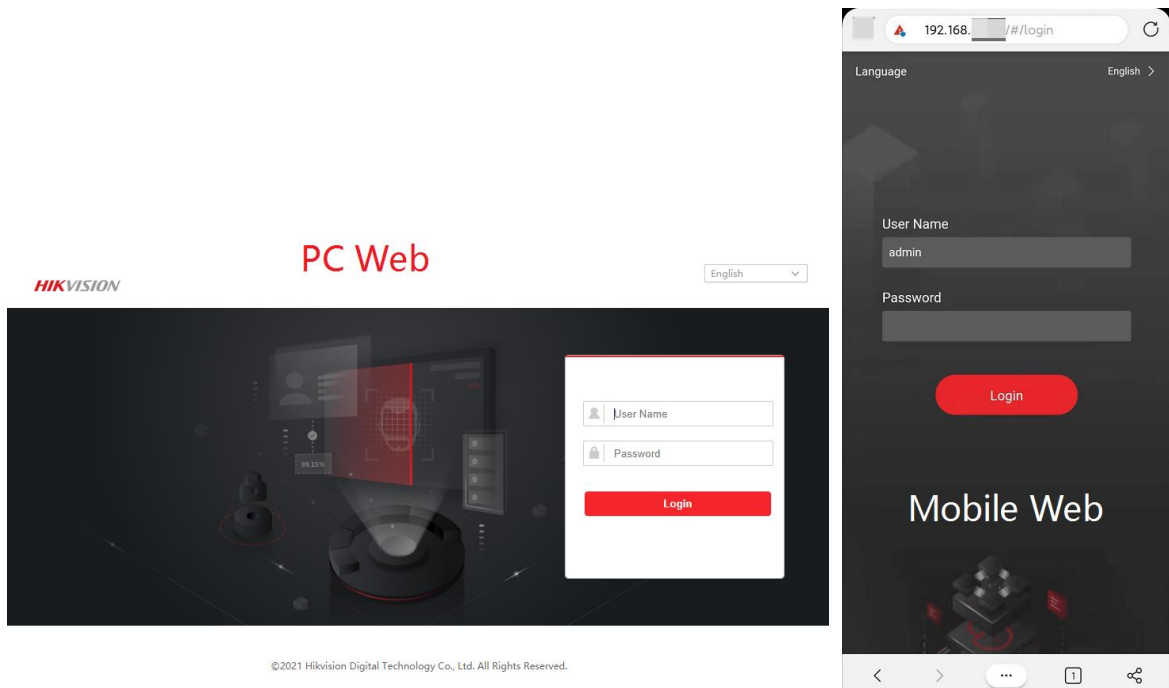


11. Configure ISUP and Hik-Connect parameter in device local menu





12. Login and configure device in web client via **PC/mobile browser**;(mobile phone should connect same network with device)



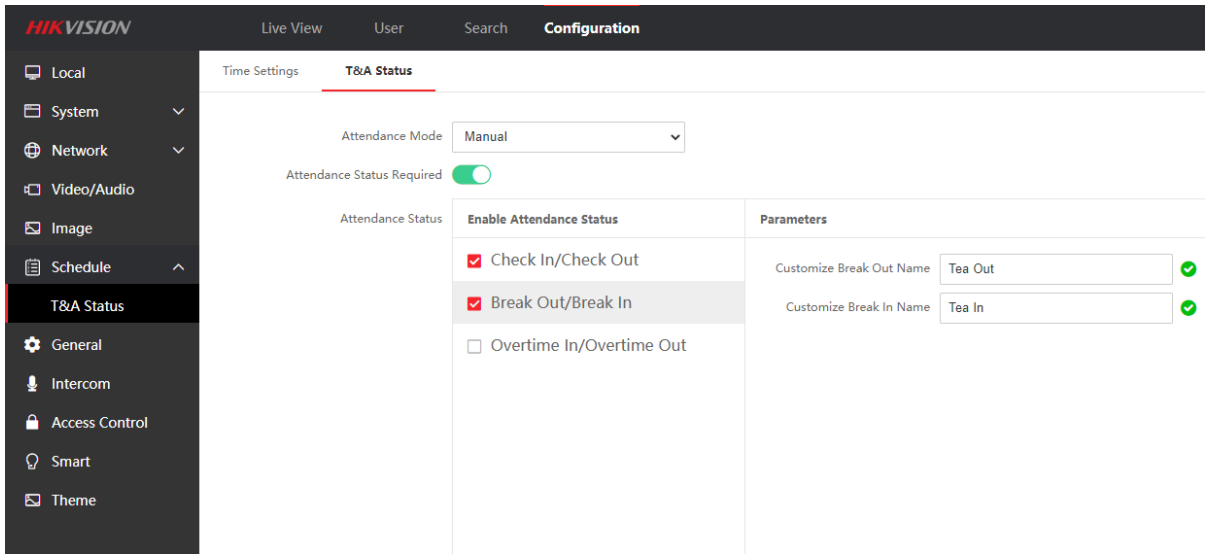
13. Self-defined voice prompt (TTS function, English only) and screen display info (user ID, name and face picture) for authentication;

#### 14. Network

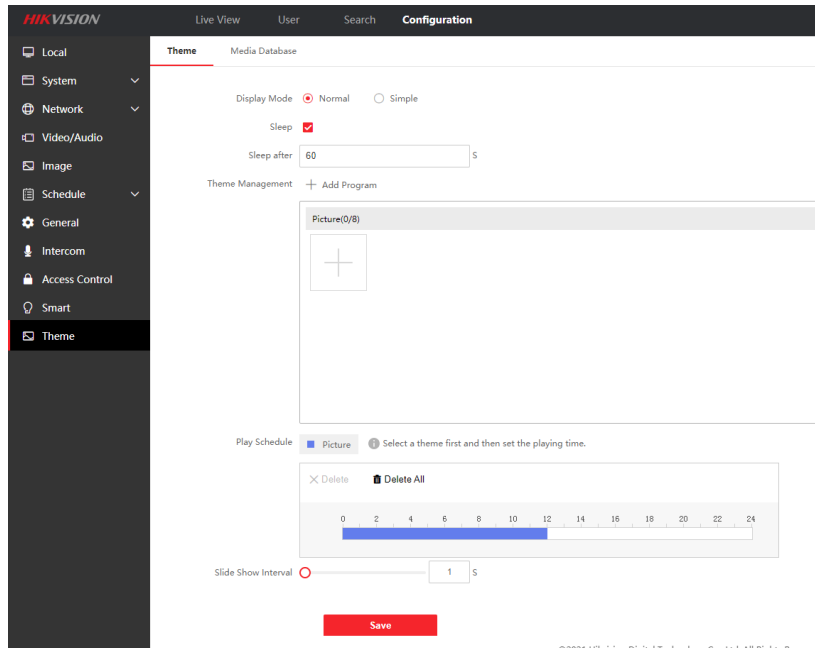
Support TCP/IP, adapt to LAN(network) or WAN(ISUP 5.0) network environment

#### 15. Function

- a. Support face mask recognition.
- b. **Video intercom** with indoor station, master station and platform;
- c. Multiple verification modes: Face, card, fingerprint(-F only), PIN code;
- d. Face recognition distance ranges from 0.3 to 1.5 meters;
- e. Support check in/check out/break out/break in/overtime in/overtime out attendance status, and self-define status name;

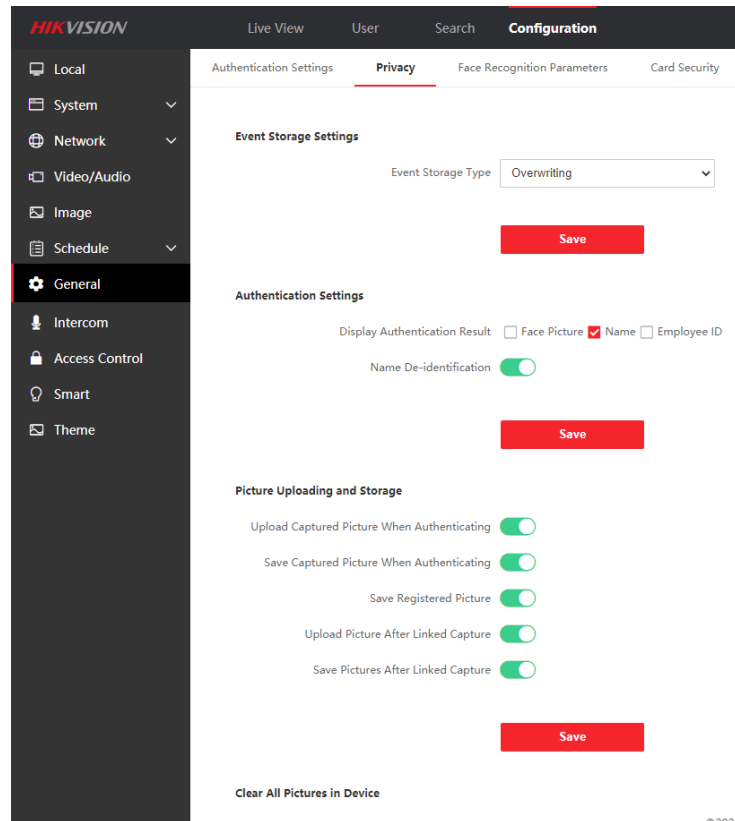


f. Support custom standby background image (max 8 pictures)



g. Support privacy protection, customer can define the privacy related parameter, such as Event Storage Settings, Picture Uploading and Storage, Clear All Pictures in Device





- h. Supports face recognition in low illumination
- i. Supports live view on the platform, H.264

## **Customer Impact and Recommended Action**

This update refers to function/compatibility improvement and will take effect automatically after the Date of Change. We are very sorry for any inconvenience of use-habit changes caused by this action. For any questions and request for this firmware, please contact our local technical support team.

### Note:

- Hikvision reserves the right to change, alter or withdraw the above notification without prior notice.
- Product design and specifications are subject to change without prior notice.
- The Hikvision firmware may contain errors known as errata, which may cause the product to deviate from published specifications. Current characterized errata are available on request.
- Hikvision is not liable for any typing or printing errors.

Hikvision Digital Technology CO., Ltd.  
No. 555 Qianmo Road, Binjiang District, Hangzhou 310051,  
China  
Tel: +86-571-8807-5998  
FAX: +86-571-8993-5635  
Email: [overseabusiness@hikvision.com](mailto:overseabusiness@hikvision.com)