

DS-K270X Series Access Controller

V1.1.0_build231018 Release Note

Device Model: DS-K2701X DS-K2702X DS-K2704X DS-K2702WX-E1 DS-K2708X DS-K2701X(P) DS-K2702X(P) DS-K2704X(P) DS-K2702WX-E1(P) DS-K2M002X Naming Rule: E1: POE P:plastic W:wifi	Device Firmware Version	DS-K270X: ACS_270X_F1Plus_EN_STD_V1.1.0_build231018.zip ACS_270X_F1Plus_EN_NEU_V1.1.0_build231018.zip DS-K2M002X: ACS_DS- K2M002X_M5S_GML_GM_V1.0.0_build20231017.zip
	Software	HikCentral AC: https://www.hikvision.com/en/support/download/software/hik-central-access-control-v2-1/

Reason for Release:

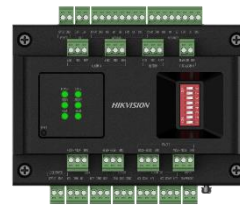
New model DS-K270X series access controller first time released.



DS-K270X



DS-K270X(P)

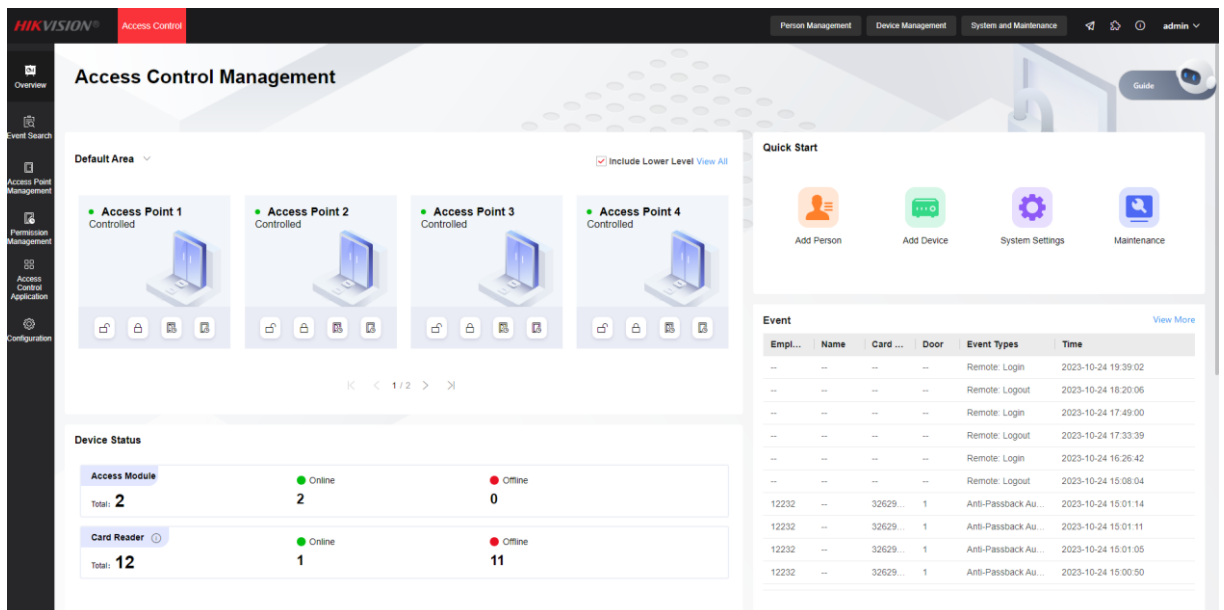


DS-K2M002X

New Features

1. Supports Max. 128 doors(realized by connecting Max.62 2-door distributed controllers)
2. Capacity :Supports up to 100,000 users(including 200,000 cards, 200,000 PIN codes, 10,000 fingerprints) and 600,000 event records
3. Supports authentication mode: Fingerprint, card, PIN code or other combined authentication modes such as card+PIN, card+fingerprint, card+fingerprint+PIN
4. Supports access plan management: supports up to Max. 256 access plan template, 256 workday templates(Max. 8 time periods per day) and 1024 holiday templates; supports remain open or closed period management
5. Support advanced function:
 - a. Anti-passback(supports anti-passback between Max.32 doors)

- b. Multi-factor authentication: open door after multiple people's authentication with card, PIN or fingerprint
 - c. Multi-door interlocking(supports multi-door interlocking between Max. 32 doors)
 - d. First person function(including remain open and authorization)
 - e. Open door with super password or duress code
 - f. Lock door when door is closed
6. Supports event uploading: upload device authentication result to platform when device is online. Support offline event re-uploading : upload events generated when device is offline to platform when connecting with platform again
 7. Supports alarm: tamper alarm, door abnormally open alarm, open door time out alarm, duress card and duress code alarm and so on
 8. Supports alarm linkage: has alarm input interface to connect with external alarm IO signal and generate alarm record; has alarm output interface to realize event linking alarm output function
 9. Supports fire alarm linkage: embedded fire alarm relay can realize opening door when receiving fire alarm signal
 10. Supports battery backup: has interface for connecting battery. When AC power is off device can switch power method to battery without interval. When AC power is restored device can charge battery automatically and it supports battery low voltage alarm
 11. Supports status indicator: has status indicator of power, network communication, RS-485 communication, arming by platform, door lock status, providing ease for configuration and troubleshooting
 12. Supports hardware reset : has reset button, long press reset button can realize restore device
 13. Supports multiple upgrade methods: supports upgrade with USB drive ,web client and platform control client
 14. Support management via web client: all configuration can be set up via web client without platform



15. E1 model supports POE function: supports power for up to 2 doors ,2 locks(total power less than 10W) and 4 readers

Customer Impact and Recommended Action

This new firmware upgrade is to improve product performance, and will take effect automatically after upgrading from previous versions. We'd like to inform you the above changes. Also, we are sorry for any possible inconvenience of use-habit changes caused by this action.

For questions or concerns, please contact our local technical support team.

Note:

- Hikvision has all rights to alter, modify and cancel this notice.
- Hikvision doesn't give any guarantee for old models' stock.
- Hikvision is not liable for any typing or printing errors.
- For special model's change details, please contact our local technical support team.

Hikvision Digital Technology CO., Ltd.
No. 555 Qianmo Road, Binjiang District, Hangzhou 310052,
China
Tel: +86-571-8807-5998
FAX: +86-571-8993-5635
Email: support@hikvision.com