

Turbo HD DVR V3.5.40 Build171110 Release Notes (2017-11-29)

Firmware Basic Information	Firmware Version:	V3.5.40 Build171110
	SDK Version:	V5.3.1.40 build20170921
	player	4.8mini
	Play Library (PlayCtrl.dll)	7.3.3.64
	Web version	V4.0.1 build 171009
	Client version	V2.6.5.8 build20171025

Reason of Upgrade

Release Turbo 4.0 DVR new models: DS-7324HQHI-K4、DS-7332HQHI-K4、DS-8124HQHI-K8、DS-8132HQHI-K8、DS-7324HUHI-K4、DS-7332HUHI-K4、DS-8124HUHI-K8、DS-8132HUHI-K8、DS-9024HUHI-K8、DS-9032HUHI-K8. All HQ series newly support 4MP lite mode, add some new functions, modify some functions, enhance products quality and meet customers' requirements.

Main Features

i. Newly release models: DS-7324HQHI-K4、DS-7332HQHI-K4、DS-8124HQHI-K8、DS-8132HQHI-K8、DS-7324HUHI-K4、DS-7332HUHI-K4、DS-8124HUHI-K8、DS-8132HUHI-K8、DS-9024HUHI-K8、DS-9032HUHI-K8. This version is only suitable for these models.

ii. Signal access ability:

	TVI	AHD	CVI
HQHI-K	4MP,3MP,1080P,720P	4MP,3MP,1080P,720P	1080P,720P
HUHI-K	5MP,4MP,3MP,1080P,720P	4MP,3MP,1080P,720P	1080P,720P

1. HQ series DVR newly support 4MP TVI and AHD signal input, HU series DVR newly support 4MP AHD signal input.
2. HU series DVR support recording 5MP@12fps, 4MP@15fps,3MP@18fps, 1080p@real-time. Sub stream recording WD1@real-time.

iii. HQHI-K newly support 4MP lite mode:

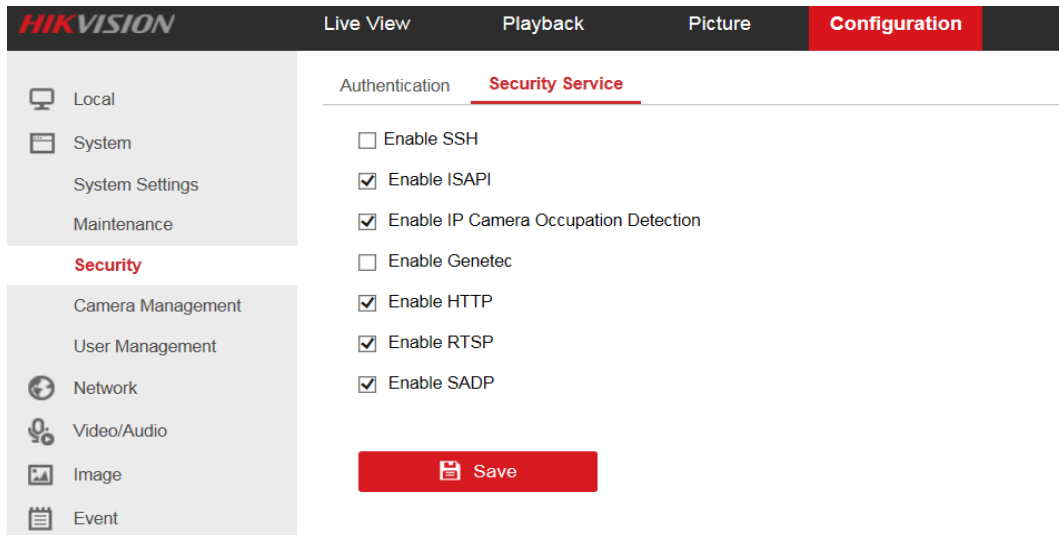
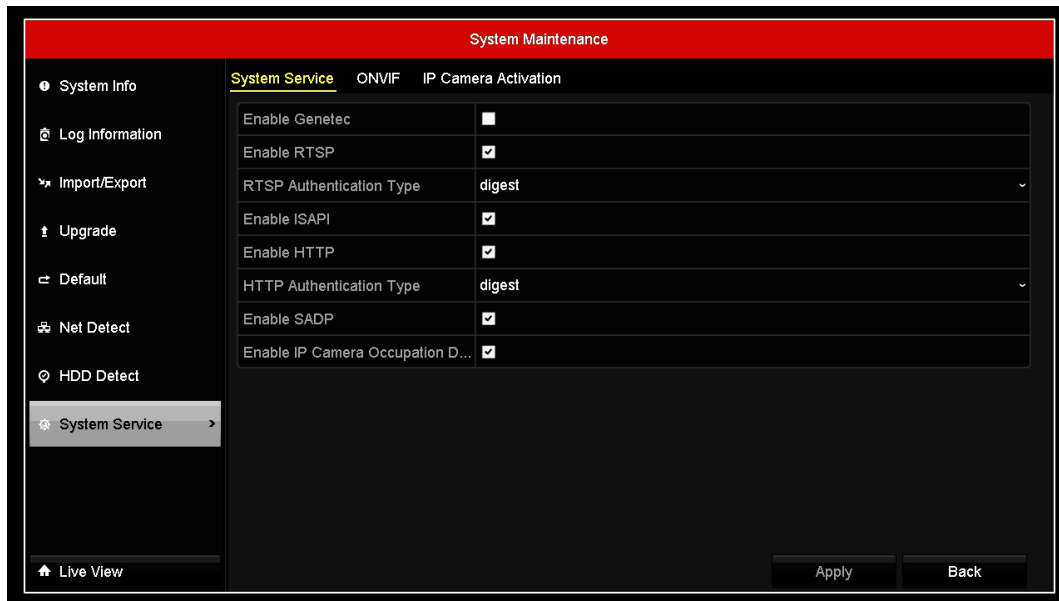
1. 4MP lite technology is the same with 1080P lite. Live view: 4MP lite@ full frame, recording: 4MP lite (1280*1440) @15fps;
2. Support all channels 4MP cameras access; when connecting 3MP cameras, only channel 1-4

support while others not.

3. The max recording frame rate of 4MP lite is always 15 fps, no matter whether 1080P lite mode is enabled or not.

iv. System service update

Some protocols and service is now configurable, configurations of local GUI and web page are as below:



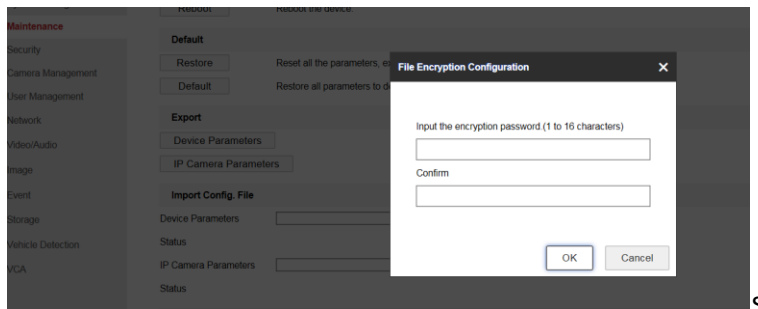
1. Delete PSIA server/client protocol;
2. User can enable or disable Genetec service;
3. User can enable or disable ONVIF protocol, this function is only available when DVR is used as server;
4. User can enable or disable ISAPI protocol;
5. User can disable/enable HTTP protocol and choose HTTP authentication type between digest and

digest & basic (only valid for third-party integration, Hikvision web uses session authentication);

6. User can disable/enable SADP protocol;
7. User can disable/enable IP camera occupation detection, when this function is enabled, DVR will detect whether IP camera is already connected to other device/client;



8. DVR's device parameters will be encrypted by user's custom encrypt key, encrypt key is required when user imports it;

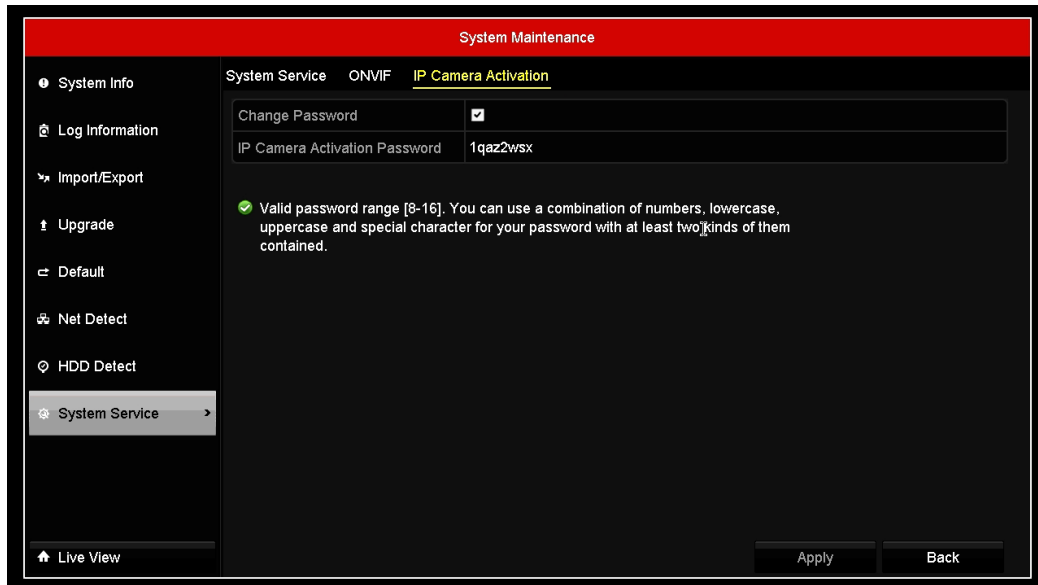


9. Exported IP camera parameters no longer contain IP camera password (user has to input passwords in excel by themselves);
10. Hik-Connect stream encryption function is opened by default.

v. Newly support combination of letters and numbers as series number.

vi. IPC access:

1. User can set the IPC activation password. If not set, default activation password of IPC is the same with DVR Admin password.



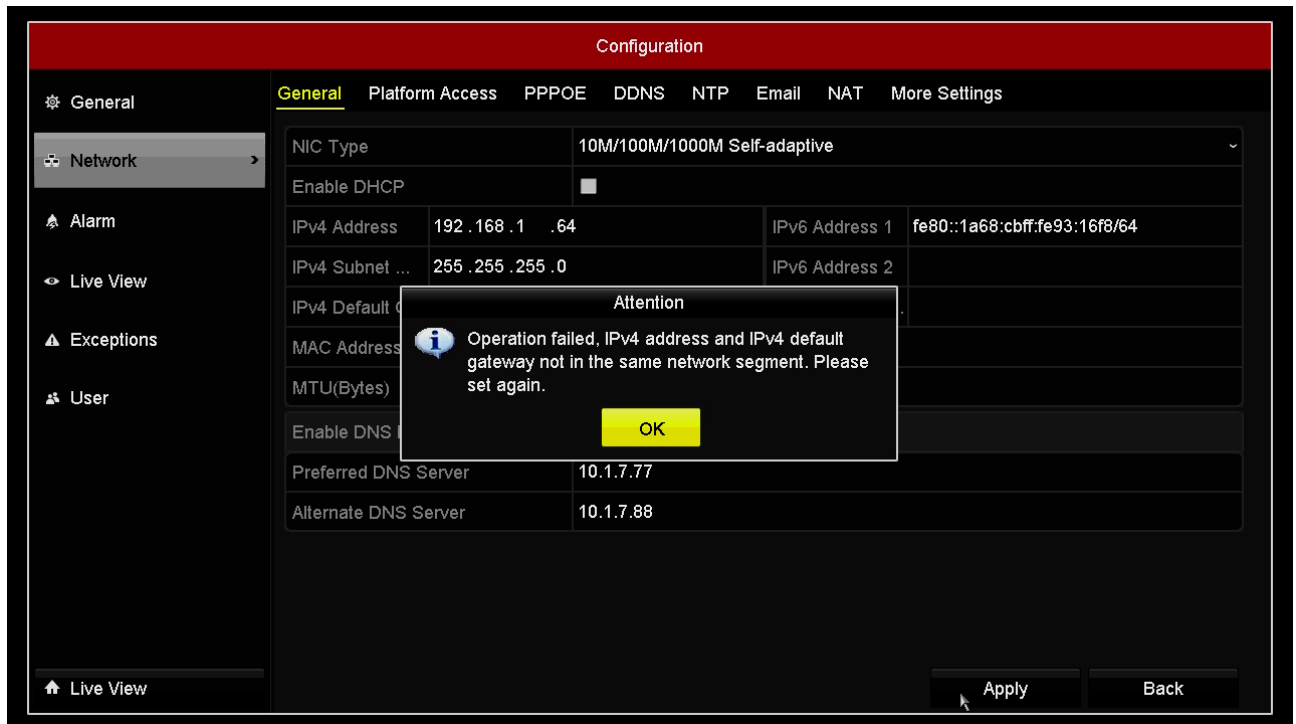
2. IPC access ability

model	Default IPC access ability	Expanded IPC access
DS-7324HQHI-K4	8-ch 6MP	32-ch 6MP
DS-7332HQHI-K4	8-ch 6MP	40-ch 6MP
DS-8124HQHI-K4	16-ch 6MP	40-ch 6MP
DS-8132HQHI-K4	16-ch 6MP	48-ch 6MP
DS-7324HUHI-K4	8-ch 8MP	32-ch 8MP
DS-7332HUHI-K4	8-ch 8MP	40-ch 8MP
DS-8124HUHI-K8	16-ch 8MP	40-ch 8MP
DS-8132HUHI-K8	16-ch 8MP	48-ch 8MP
DS-9024HUHI-K8	24-ch 12MP	48-ch 12MP
DS-9032HUHI-K8	32-ch 12MP	64-ch 12MP

- vii. To enhance the Hik-connect live view performance, default sub stream encoding parameters are set as WD1/12fps/512kbps.
- viii. HDMI2 output supports 64 split screen under 4k resolution output.

Modified Functions

- i. Cancel the restriction that gateway IP and IP address can't be set in the different network segment to meet customers' requirement.



- ii. It is recommended to use at least 2 HDDs for multi-channel DVRs(24-ch,32-ch), due to the limitation of single HDD read and write speed.
- iii. Other issues fixed.

Related product list:

K Series Turbo HD DVR	DS-7324HQHI-K4、DS-7332HQHI-K4、 DS-8124HQHI-K8、DS-8132HQHI-K8、 DS-7324HUHI-K4、DS-7332HUHI-K4、 DS-8124HUHI-K8、DS-8132HUHI-K8、 DS-9024HUHI-K8、DS-9032HUHI-K8
--------------------------	-----------------------------------------------------------------------------------------------------------------------------------------------------------------------

Customer Impact and Recommended Action

This new firmware upgrade is to improve product performance, and will take effect automatically after upgrading from previous versions. We'd like to inform you the above changes. Also, we are sorry for any possible inconvenience of use-habit changes caused by this action.

For questions or concerns, please contact our local technical support team.

Note:

- Hikvision has all rights to alter, modify and cancel this notice.
- Hikvision doesn't give any guarantee for old models' stock.
- Hikvision is not liable for any typing or printing errors.
- For special model's change details, please contact our local technical support team.

Hikvision Digital Technology CO., Ltd.
No. 555 Qianmo Road, Binjiang District, Hangzhou 310052, China
Tel: +86-571-8807-5998
FAX: +86-571-8993-5635
Email: support@hikvision.com