

## Turbo HD DVR V3.4.60 build160607 Release Notes (2016-6-15)

<b>Firmware Basic Information</b>	Firmware Version:	V3.4.60 build160607
	SDK Version:	V5.2.1.5 build20160506
	Play Library (PlayCtrl.dll)	6.0.0.4
	player	7.3.0.74
	Web version	V4.0.1 build160523
	Client version	V2.4.6.18 build20160531

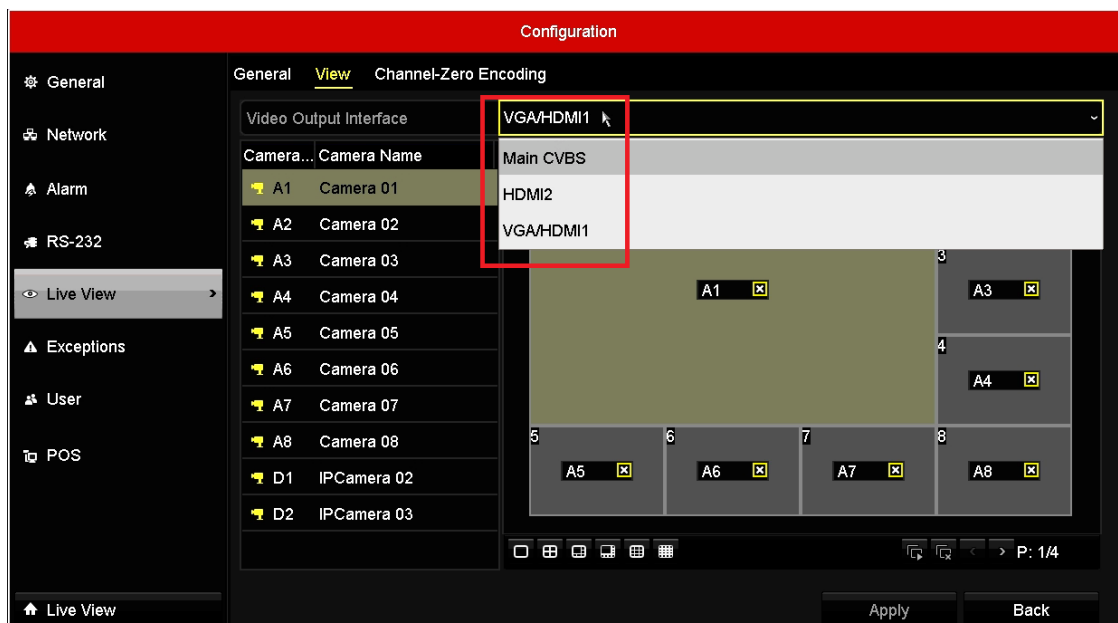
### Reason of Upgrade

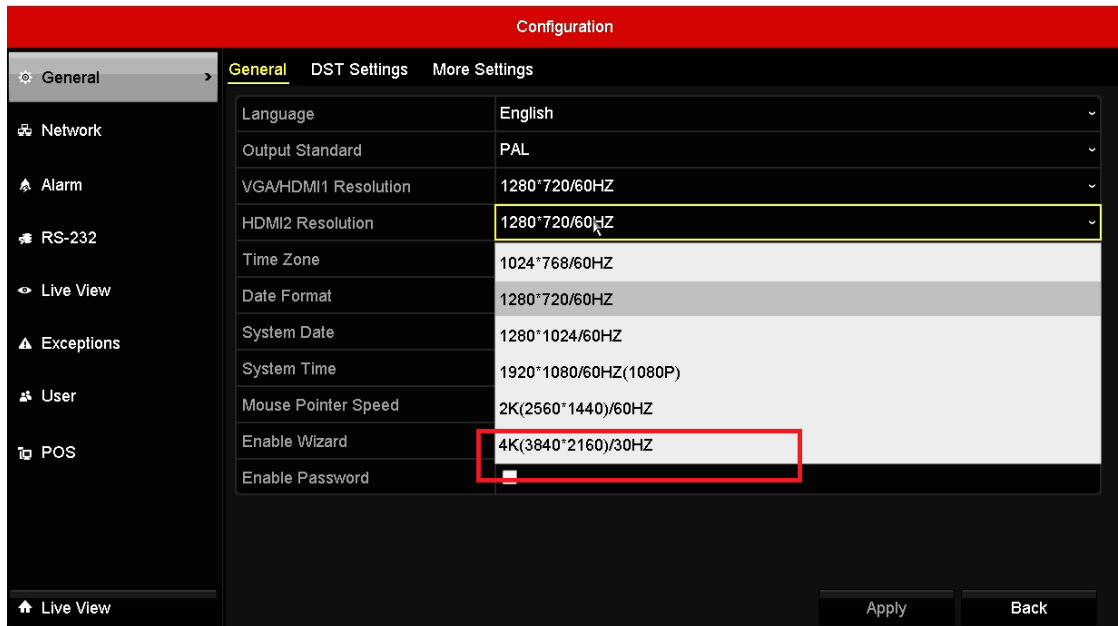
This version is only suitable for **DS-7300HUHI-F4/N**, **DS-8100HUHI-F8/N** and **DS-9000HUHI-F8/N**. All of these models are newly published. Add some new functions, modify some functions, enhance products quality and meet customers' requirements.


### Firmware Updates

#### New Features

- i. Newly support **DS-7300HUHI-F4/N**, **DS-8100HUHI-F8/N** and **DS-9000HUHI-F8/N**.
- ii. HDMI's output support **Non-Synchronous Output**: HDMI1 and VGA are synchronous output; HDMI2 and HDMI1/VGA are non-synchronous output. HDMI1/VGA support up to 1080P output, while HDMI2 supports 4K output.





- iii. Support access of IP cameras up to **8MP**; support access of **H265** stream IP cameras.
- iv. Newly support raid **more than 16TB** for 73/81/90HUHI-Fx/N. For old models DS-9000HQHI-SH.
- v. Newly support hot-swappable HDDs
- vi. Optimize the GUI of soft keyboard which distinguish the upper case from lower case. In the previous version, it was all upper case. Just by one left-clicking the , it will switch the letter case.

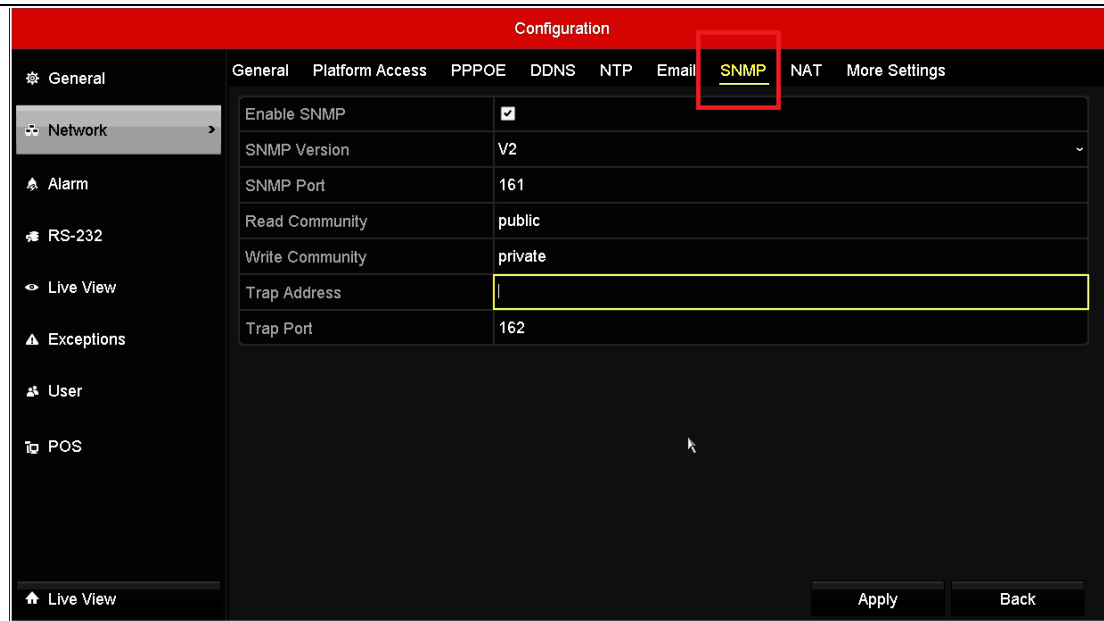


Lower case



Upper case

- vii. DS-73/81/90HUHI-Fx/N models support **SNMP** function.



## Modified functions

- i. Update the characters of multi-language: replace some English characters by corresponding language characters.
- ii. Change the output of **two-way audio**: the first channel of two-way audio is for HDMI1/VGA, the second channel of two-way audio is for CVBS, the third channel is for HDMI2.
- iii. For two network interfaces device, it only supports working modes **Net Fault-tolerance** and **Multi-address**. **Load Balance** working mode is no more supported.
- iv. Max numbers supported for video search is changed from 2000 to 4000.

## **Related product list:**

-F/N Series Turbo HD DVR	DS-7304HUHI-F4/N、DS-7308HUHI-F4/N、DS-7316HUHI-F4/N DS-8104HUHI-F8/N、DS-8108HUHI-F8/N、DS-8116HUHI-F8/N DS-9004HUHI-F8/N、DS-9008HUHI-F8/N、DS-9016HUHI-F8/N
-----------------------------	--

## **Customer Impact and Recommended Action**

This new firmware upgrade is to improve product performance, and will take effect automatically after upgrading from previous versions. We'd like to inform you the above changes. Also, we are sorry for any possible inconvenience of use-habit changes caused by this action.

For questions or concerns, please contact our local technical support team.

### Note:

- Hikvision has all rights to alter, modify and cancel this notice.
- Hikvision doesn't give any guarantee for old models' stock.
- Hikvision is not liable for any typing or printing errors.
- For special model's change details, please contact our local technical support team.

Hikvision Digital Technology CO., Ltd.  
No. 555 Qianmo Road, Binjiang District, Hangzhou 310052, China  
Tel: +86-571-8807-5998  
FAX: +86-571-8993-5635  
Email: support@hikvision.com