

# H5 Network PTZ Dome Camera Firmware

## Version: V5.5.27 Release Note

(2020-03-11)

### 1. Firmware Version Information

#### 1.1 Firmware Basic Information

PTZ:

IPD\_H5\_EN\_XXX\_5.5.27\_200109.zip

IPDHG\_H5\_L1\_EN\_XXX\_5.5.27\_200109.zip

### 2. Related Resource Versions

#### 2.1 Built-in Resource Versions

- (1) SDK version: HCNetSDKV6.1.0.15\_build20190620\_Win32
- (2) Ehome version: HCEhomeSDKV2.2.3.1\_build20190701\_win64
- (3) iVMS 4200 client: V2.6.24.5 Build20190729
- (4) Hybrid Target Algorithm lib(HMS): V4.0.0
- (5) Face Capture Algorithm lib: V4.3.1

#### 2.2 Protocol Versions

- (1) Onvif version: 1806SR1
- (2) ISAPI version: 2.4
- (3) Ehome version: V2.0(2.1-3.0)\V4.0
- (5) Hik-Connect version: V1.7

## 2.3 Third-party Platform Software Versions

(1) Milestone software version (Milestone Enterprise 8.1a(2016 R2 10.2a)), Milestone driver version (Device Pack 9.6)

(2) Milestone software version (Milestone Corporate 2017 R3 11.3a), Milestone driver version (Device Pack 9.6)

(3) Exacqvision software

(4) Avigilon Control Center

(5) digifort

(6) Hik Central version: V1.4.0.6

## 3. Version Main Updates(Compared with V5.5.24)

### 3.1 New Features

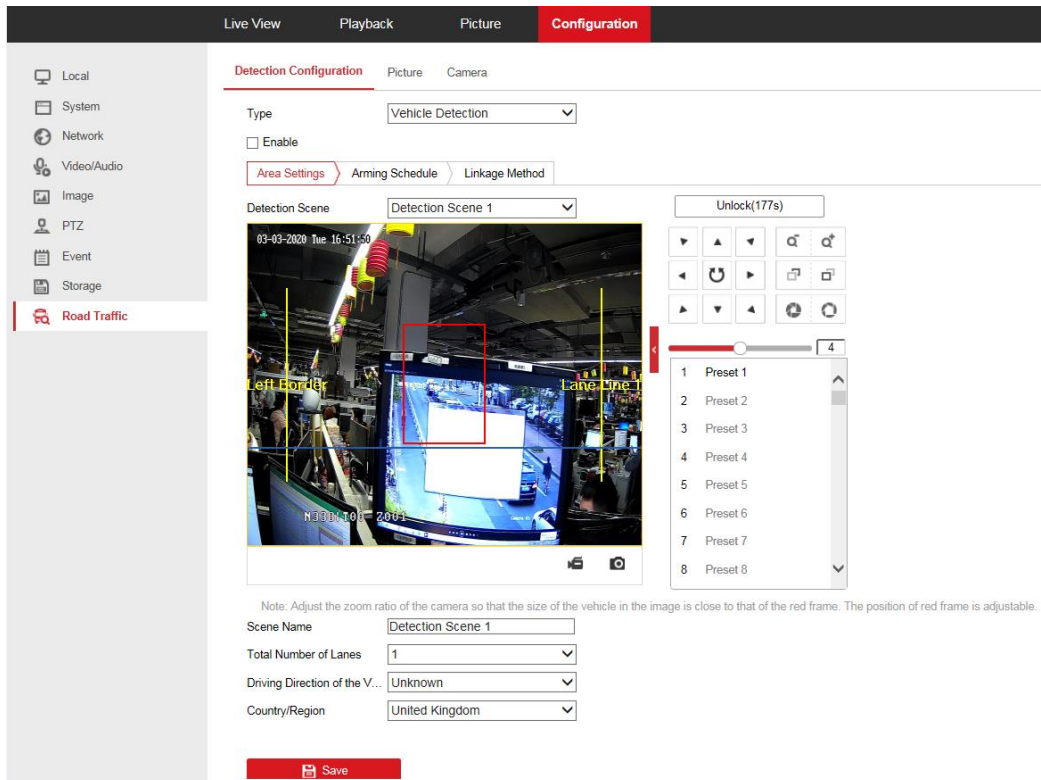
- **New models are released.**

**DS-2DF8442IXS-AEL(T2), DS-2DF8442IXS-AELW(T2), DS-2DF8A442IXS-AEL(T2), DS-2DF8A442IXS-AELY(T2), DS-2DF8A442IXS-AEL/SP(T2), DS-2DF8A442IXS-AF(T2), DS-2DF8A442INXS-AEL(T2), DS-2DF8A448IXS-AEL(T2), DS-2DF8A848IXS-AEL(T2), DS-2DF9C245IHS-DLW(T2), DS-2DF9C245MHS-DLW(T2), DS-2DF9C435IHS-DLW(T2), DS-2DF9C435I5HS-DLW(T2), DS-2DF9C435MHS-DLW(T2), DS-2DF9C473IXS-DLW(T2).**

- **Newly support Road Traffic function. Support 100 countries in web browser and display United Kingdom by default:**

**Albania, Algeria, Angola, Argentina, Armenia, Australia, Austria, Azerbaijan, Bahrain, Belarus, Belgium, Bolivia, Bosnia and Herzegovina, Brazil, Bulgaria, Burma, Cambodia, Canada, Chile, Colombia, Costa Rica, Croatia, Cyprus, Czech Republic, Denmark, Dominican Republic, Ecuador, Egypt, El Salvador, Estonia, Ethiopia, Finland, France, Georgia, Germany, Ghana, Greece, Guatemala, Hungary, Iceland, Indonesia, Iraq, Ireland, Italy, Ivory Coast, Jordan, Kazakhstan, Kenya, Kosovo, Kuwait, Kyrgyzstan, Latvia, Lebanon, Liechtenstein, Lithuania, Luxembourg, Malta, Mauritius, Mexico, Moldova, Mongolia,**

Netherlands, New Zealand, Nigeria, North Macedonia, Oman, Pakistan, Panama, Paraguay, Peru, Philippines, Poland, Portugal, Qatar, Romania, Russia, Saudi Arabia, Senegal, Sierra Leone, Slovakia, Slovenia, South Africa, Spain, Sri Lanka, Sweden, Switzerland, Taiwan(China), Tanzania, Trinidad and Tobago, Tunisia, Turkey, Uganda, Ukraine, United Arab Emirates, United Kingdom, Uruguay, Uzbekistan, Vietnam, Zambia, Zimbabwe.



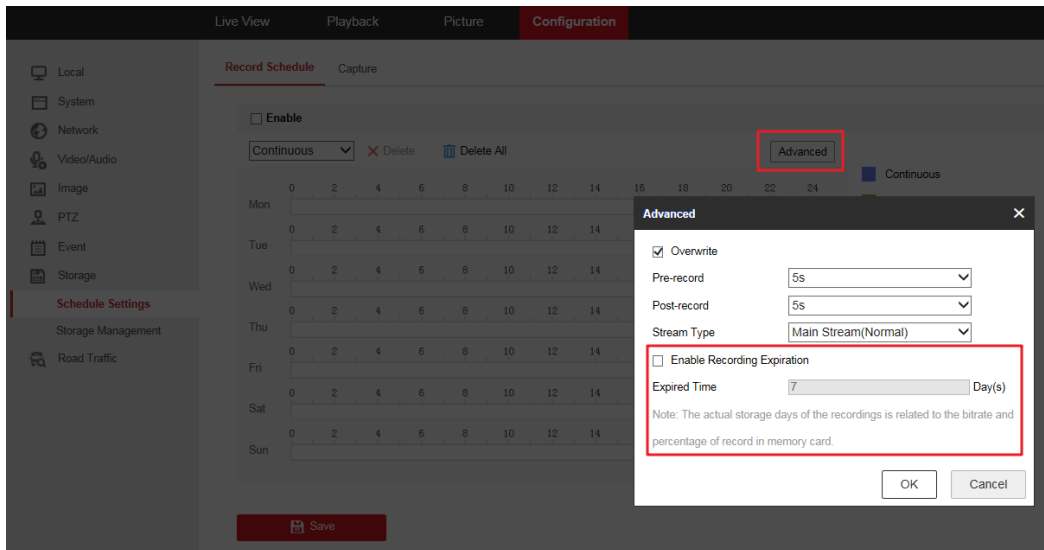
**Note:**

**1. Only the Vehicle Detection type is supported. The vehicle detection does not distinguish between the Entrance/Exit mode and City Street mode, and takes effect directly according to the City Street mode.**

**2. Does not support motorcycle identification.**

**3. Does not support vehicle feature recognition.**

- **Newly support Recording Expiration in Recording Schedule. Records that exceed the Expired Time need to be deleted, and deleted videos cannot be recovered.**



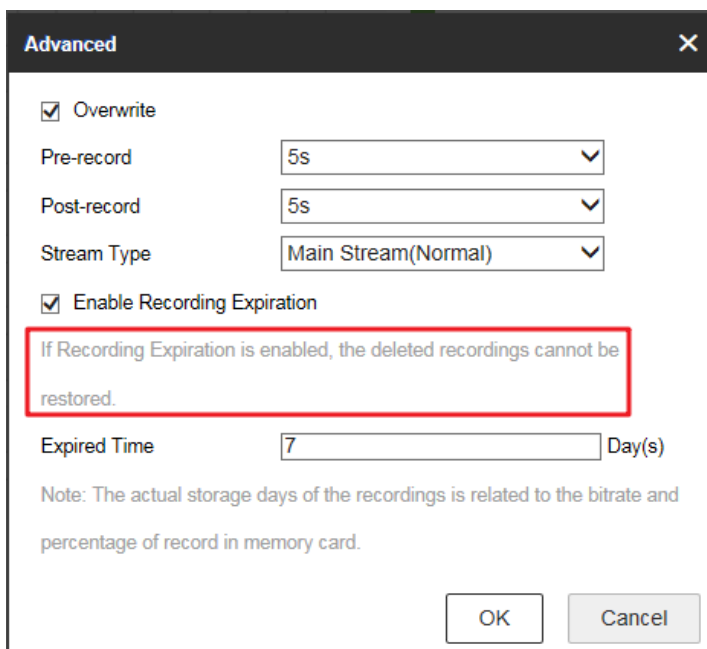
## [The rules]

**1. The Recording Expiration is disabled by default.**

**2. The expired time is in days, ranges from the 1 to 90 and the default is 7 days.**

***Note: The actual storage days of the recordings is related to the bitrate and the percentage of the record in memory card.***

**3. After enable this function, a prompt message will pop up: If Recording Expiration is enabled, the deleted recordings cannot be restored.**



## Customer Impact and Recommended Action

This update refers to function/compatibility improvement and will take effect automatically after the Date of Change. We are very sorry for any inconvenience of use-habit changes caused by this action.

For any questions and request for this firmware, please contact our local technical support team.

### Remarks:

- Hikvision reserves the right to change, alter or withdraw the above notification without prior notice.
- Product design and specifications are subject to change without prior notice.
- The Hikvision firmware may contain errors known as errata which may cause the product to deviate from published specifications. Current characterized errata are available on request.
- Hikvision is not liable for any typing or printing errors.

Hikvision Digital Technology CO., Ltd.  
No. 555 Qianmo Road, Binjiang District, Hangzhou 310051, China  
Tel: +86-571-8807-5998  
FAX: +86-571-8993-5635  
Email: [overseabusiness@hikvision.com](mailto:overseabusiness@hikvision.com)

### Supported Product List (DFxxxx Series)

Product Category	Model Number
DF Series	DS-2DF8442IXS-AEL(T2)
DF Series	DS-2DF8442IXS-AELW(T2)
DF Series	DS-2DF8A442IXS-AEL(T2)
DF Series	DS-2DF8A442IXS-AELY(T2)
DF Series	DS-2DF8A442IXS-AEL/SP(T2)
DF Series	DS-2DF8A442IXS-AF(T2)
DF Series	DS-2DF8A442INXS-AEL(T2)
DF Series	DS-2DF8A448IXS-AEL(T2)

DF Series	DS-2DF8A848IXS-AEL(T2)
DarkFighter X Series	DS-2DF9C245IHS-DLW(T2)
DarkFighter X Series	DS-2DF9C245MHS-DLW(T2)
DarkFighter X Series	DS-2DF9C435IHS-DLW(T2)
DarkFighter X Series	DS-2DF9C435I5HS-DLW(T2)
DarkFighter X Series	DS-2DF9C435MHS-DLW(T2)
DF Series	DS-2DF9C473IXS-DLW(T2)