

DF Series PTZ Camera V5.5.8 Release Note

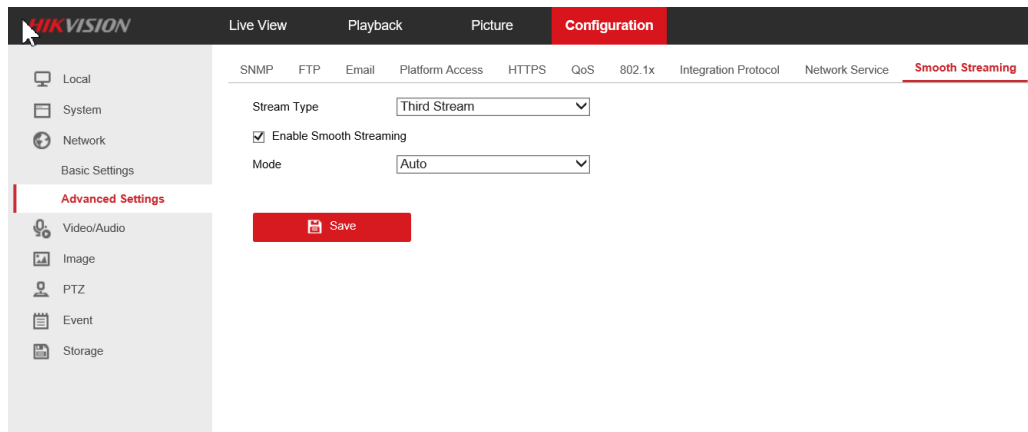
Firmware Basic Information	Firmware Version:	V5.5.8_180907
	SDK Version:	V5.3.6.11_build20180626
	Play Library (PlayCtrl.dll)	V7.3.5.43_Build20180705
	Encapsulation Library (SystemTransform.dll)	V2.4.0.8(20150116)
	Voice intercom library	1.1.0.8
	iVMS-4200	V2.6.10.11build20180726
	IE Client version	V4.0.1 build 180724

1. Compatibility Update

- 1) HIKCGI version: V2.0;
- 2) ONVIF version: V1612 ONVIF Test Tool version:1706;
- 3) ISAPI version: 2.4;
- 4) HIK-CONNECT V1.7;
- 5) Avigilon Control Center: V6.4.4.2
- 6) ExcaqVision: V8.8.1.119385
- 7) Milestone:
 - 1) Milestone Enterprise 8.1a(2016 R2 10.2a), Milestone drive version (Device Pack 9.3).
 - 2) Milestone Corporate version(2017 R1 11.3a), Milestone drive version (Driver 9.3)

2. Modification

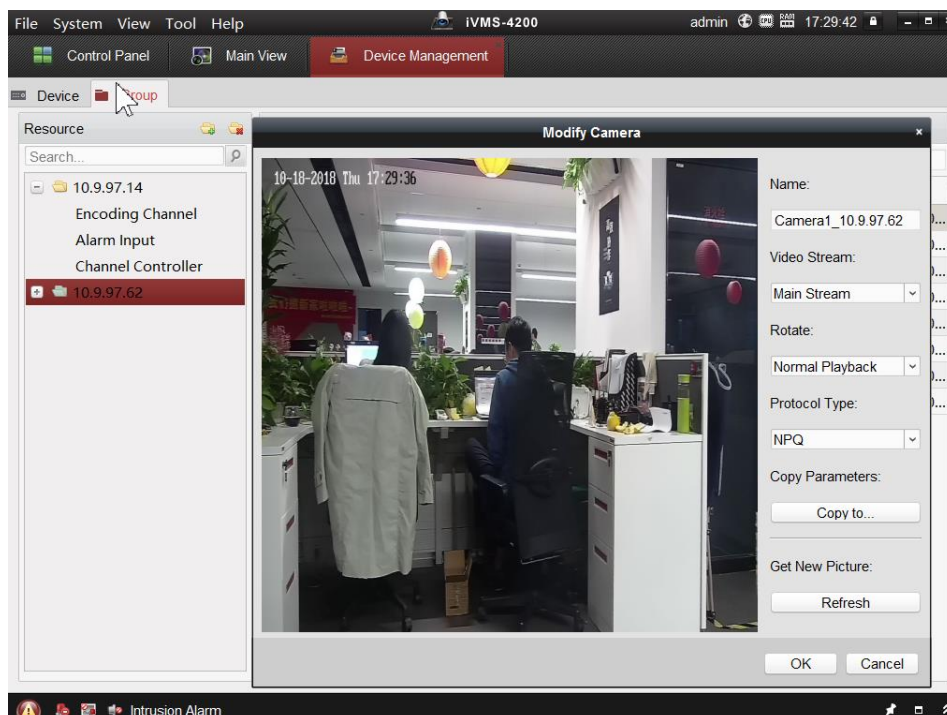
- 1) Newly support **Smooth Streaming** function, which is used to get smooth live view under poor network condition.



- Smooth streaming is only supported on third stream, there are three modes selectable: **Auto**, **Resolution Priority**, and **Error Correction**.
- In **Resolution Priority** mode, the actual resolution will not exceed the set value in the Video/ Audio interface.
 - a) **Auto:** The resolution and bitrate will be adjusted automatically, the upper limits of which will not exceed the values you set on Video page. Go to Configuration > Video/Audio > Video page, set the Resolution and Max. Bitrate before you enable smooth streaming function.
 - b) **Resolution Priority:** The resolution stays the same as the set value in Video page, and the bitrate will be adjusted automatically. Go to Configuration > Video/Audio > Video page, set the Max. Bitrate before you enable smooth streaming function
 - c) **Error Correction:** The resolution and bitrate stay the same as the set values in Video page. This mode is used to correct the

data error during transmission. You can configure the error correction proportion within range of 0-100. When the proportion is 0, the data error will be corrected by data retransmission. When the proportion is higher than 0, the error data will be recovered via redundant data that is added to the stream. The higher the value is, the more redundant data will be generated, and the larger bandwidth is required. When the proportion is 100, the redundant data will be as large as the original data.

- Smooth Streaming function only can be used on the 4200 VMS client.



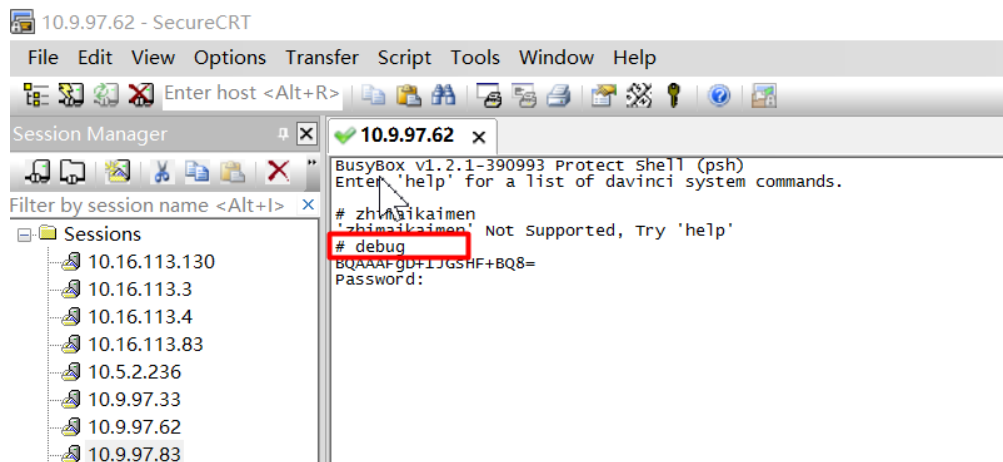
- 2) Newly support No-plugin preview via html5 protocol, the default preview is sub-stream and only support live view and configuration

interface.

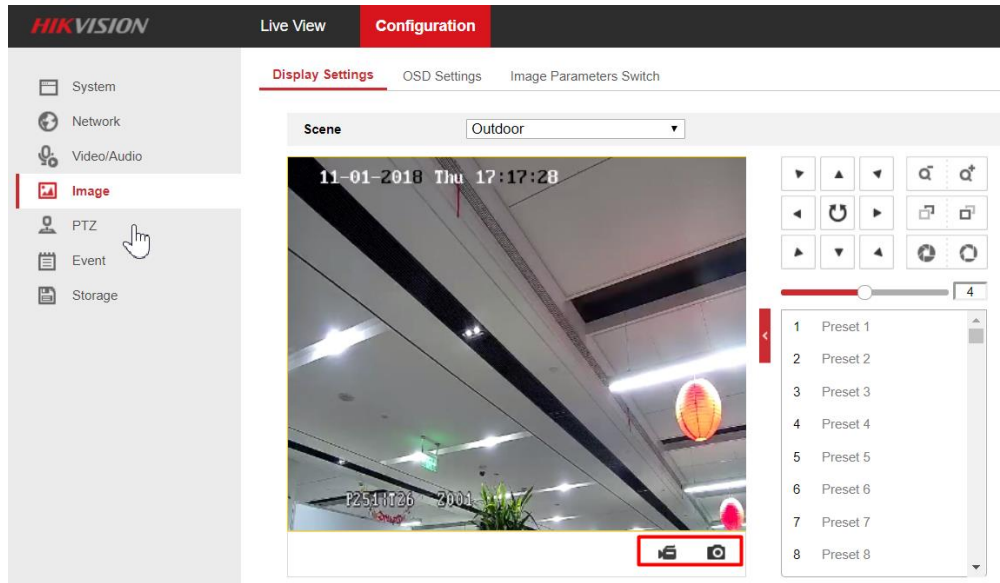
- 3) Security mechanism is modified, user password is not allowed to include the user name character.

3. Optimazation

- 1) Hik-connect client will not change main stream resolution after switching to HD mode.
- 2) “zhimakaimen” serial command name is modified to “debug”, the device will not support “zhimakaimen” anymore.



- 3) Add **Start recording** and **Capture** button on the **Image→display settings** interface.



4. Delete

- 1) 4 MP products will not support high frame rate (50/60 fps) due to CPU performance limitations.

5. Supported Model List

Supported Model List (DS-2PTxxxxx)		
DS-2DF5225X-AE3	DS-2DF5225X-AEL	DS-2DF5232X-AE3
DS-2DF5232X-AEL	DS-2DF6225X-AEL	DS-2DF6A225X-AEL
DS-2DF6A236X-AEL	DS-2DF6A425X-AEL	DS-2DF6A436X-AEL
DS-2DF6A825X-AEL	DS-2DF6A836X-AEL	DS-2DF7225IX-AEL
DS-2DF7225IX-AELW	DS-2DF7232IX-AEL	DS-2DF7232IX-AELW
DS-2DF8225IX-AEL	DS-2DF8225IX-AELW	DS-2DF8236I5X-AELW
DS-2DF8236IX-AEL	DS-2DF8236IX-AELW	DS-2DF8250I5X-AEL
DS-2DF8250I5X-AELW	DS-2DF8250I8X-AEL	DS-2DF8250I8X-AELW
DS-2DF8425IX-AEL	DS-2DF8425IX-AELW	DS-2DF8436I5X-AELW
DS-2DF8436IX-AEL	DS-2DF8436IX-AELW	DS-2DF8825IX-AEL
DS-2DF8825IX-AELW	DS-2DF8836I5X-AELW	DS-2DF8836IX-AEL
DS-2DF8836IX-AELW	DS-2DF8225IH-AEL	DS-2DF8225IH-AELW

Customer Impact and Recommended Action

This update refers to function/compatibility improvement and will take effect automatically after the Date of Change. We are very sorry for any inconvenience of use-habit changes caused by this action. For any questions and request for this firmware, please contact our local technical support team.

Remarks:

- Hikvision reserves the right to change, alter or withdraw the above notification without prior notice.
- Product design and specifications are subject to change without prior notice.
- The Hikvision firmware may contain defects or errors known as errata which may cause the product to deviate from published specifications. Current characterized errata are available on request.
- Hikvision is not liable for any typing or printing errors.

Hikvision Digital Technology CO., Ltd.
No. 555 Qianmo Road, Binjiang District, Hangzhou 310051, China
Tel: +86-571-8807-5998
FAX: +86-571-8993-5635
Email: overseabusiness@hikvision.com