



How to count the people in the area using Queue Management

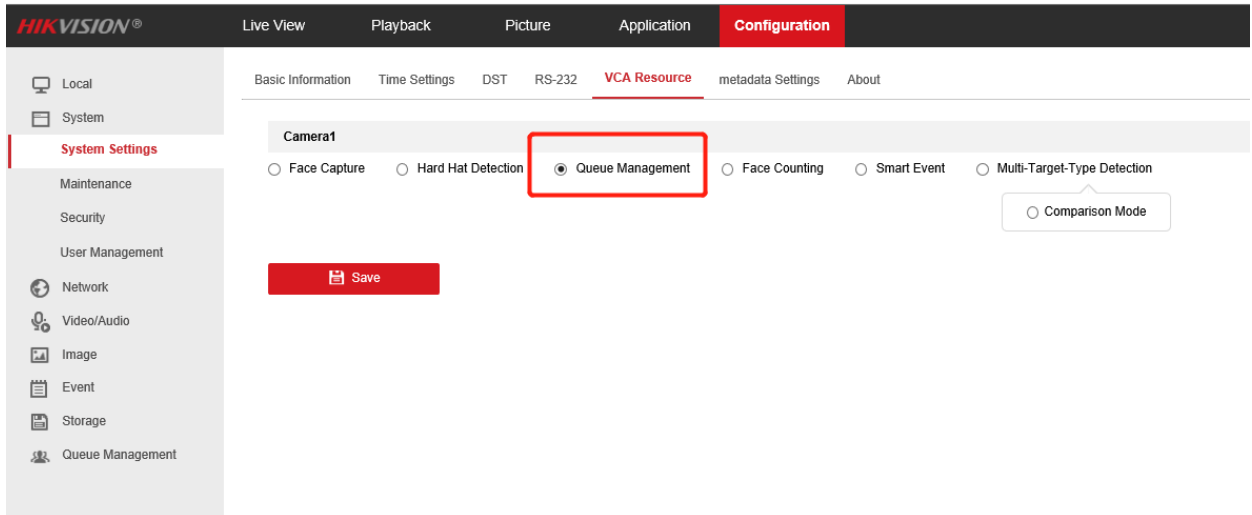
Title:	How to count the people in the area using Queue Management	Version:	v1.0	Date:	9/28/2019
Product:	IPC			Page:	1 of 9

1. Preparation

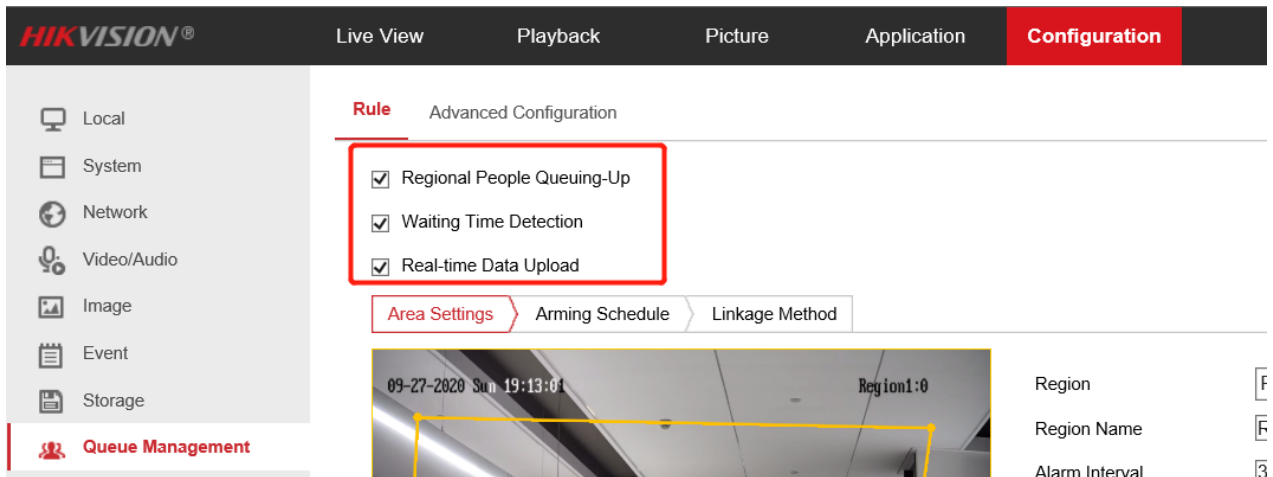
Queue Management can be found in DS7, iDS7 series cameras.

2. Configuration

Go to [Configuration] – [System] - [system settings] – [VCA Resource] and check whether you are choosing the right VCA resource (Queue Management).



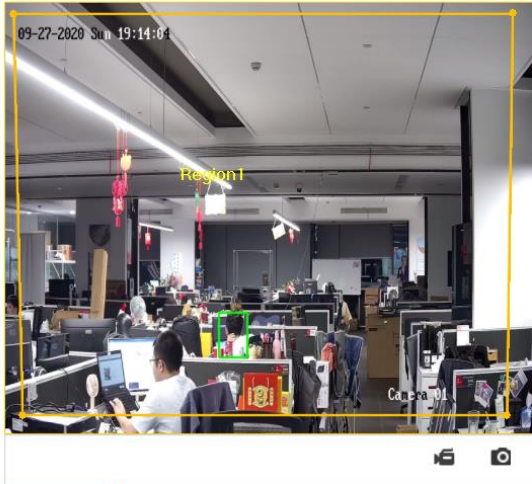
Go to Queue Management and enable all selections below.



Title:	How to count the people in the area using Queue Management	Version:	v1.0	Date:	09/23/2020
Product:	IPC			Page:	2 of 6

Draw the detection area as your scenario needs. Then Enable the OSD to show how many people inside the area.

Area Settings
Arming Schedule
Linkage Method



Add Region
Delete
Color ■

Region

Region Name

Alarm Interval s ⓘ In the set interval, trigger o

Regional People Queuing-Up Settings

OSD

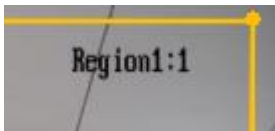
Alarm Trigger Condition

Alarm Threshold persons ⓘ An alarm is triggere

Waiting Time Detection Settings

Alarm Trigger Condition

Alarm Threshold s ⓘ An alarm is triggered when



which you will see eventually like above.

Set the Arming schedule and linkage method as the scenario needs.

- Local
- System
- Network
- Video/Audio
- Image
- Event
- Storage
- Queue Management

Rule Advanced Configuration

Regional People Queuing-Up

Waiting Time Detection

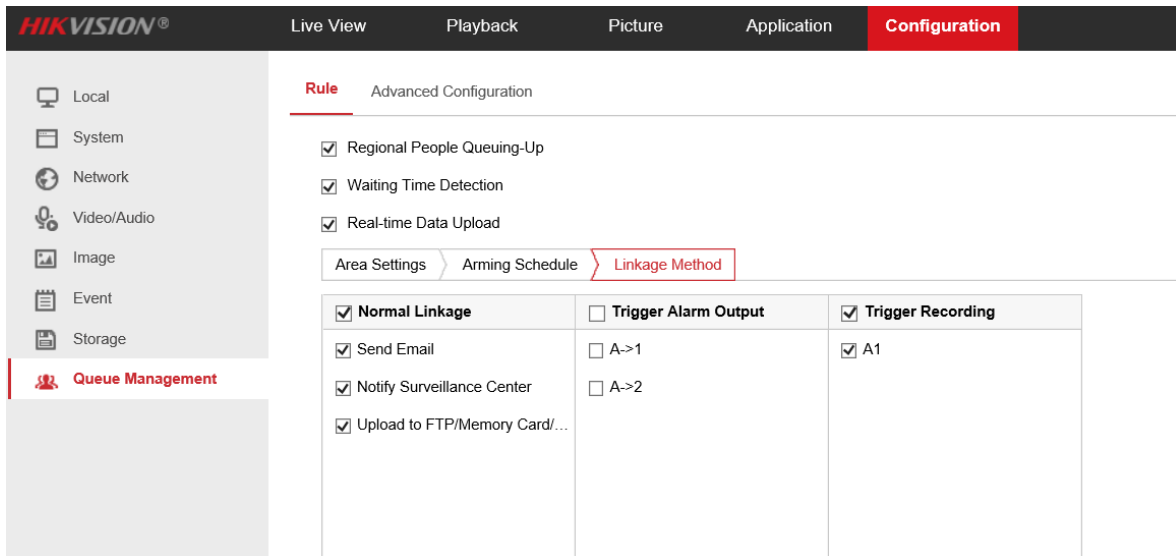
Real-time Data Upload

Area Settings
Arming Schedule
Linkage Method

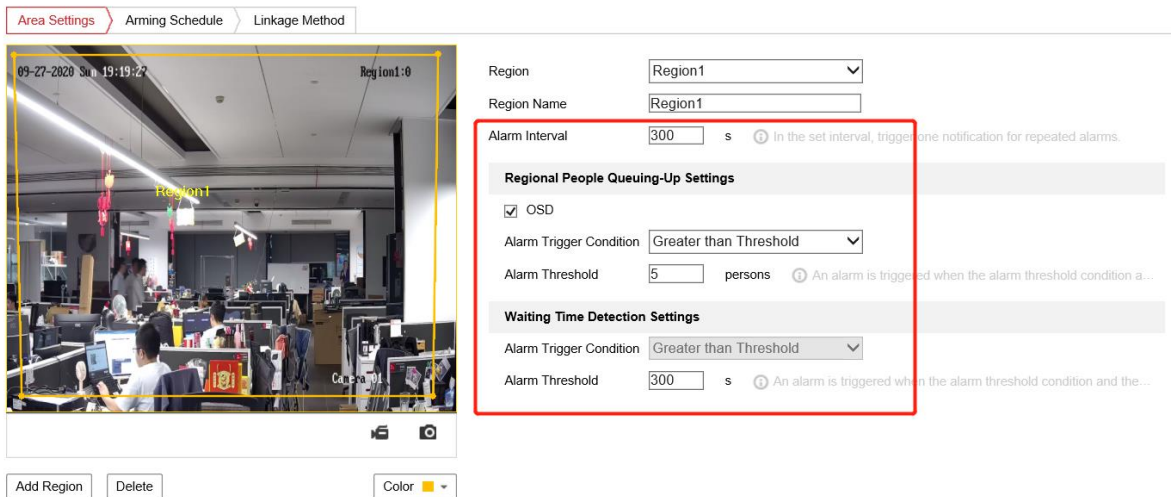
✕ Delete
🗑 Delete All

	0	2	4	6	8	10	12	14	16	18	20	22	24
Mon													
Tue													
Wed													
Thu													
Fri													
Sat													
Sun													

Title:	How to count the people in the area using Queue Management	Version:	v1.0	Date:	09/23/2020
Product:	IPC			Page:	3 of 6



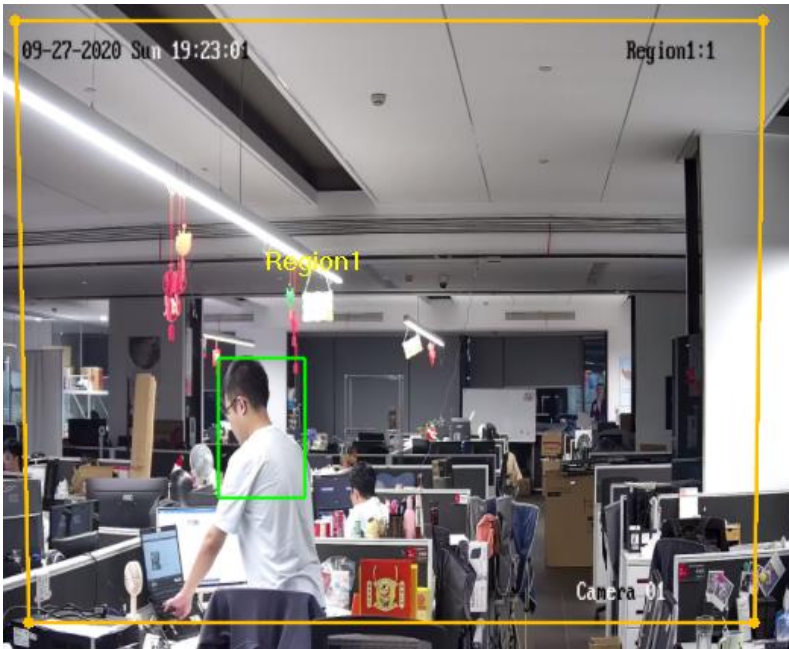
Then set the trigger condition by switching the settings below:



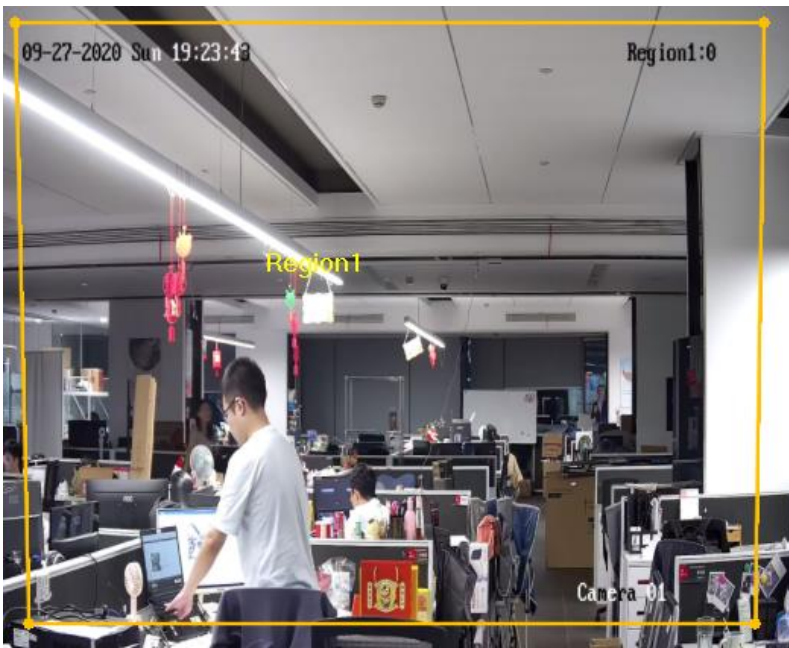
After all, we can set the target filter in the Advanced Configuration. Switch the Target Size to limit the counting target size, which default is 96 pixels target width.

Filter		
Target Size	<input type="text" value="96"/>	pixel ←
Target Displacement	<input type="text" value="96"/>	pixel
Min. Waiting Duration	<input type="text" value="10"/>	s
Validity	<input type="text" value="50"/>	

Title:	How to count the people in the area using Queue Management	Version:	v1.0	Date:	09/23/2020
Product:	IPC			Page:	4 of 6



Target size: 96 pixels



Target size: 300 pixels

Title:	How to count the people in the area using Queue Management	Version:	v1.0	Date:	09/23/2020
Product:	IPC			Page:	5 of 6

【Important】 Then set the Min. Waiting Duration to 0s which default is 1s to make the camera count the target immediately when it goes into the area.

Filter

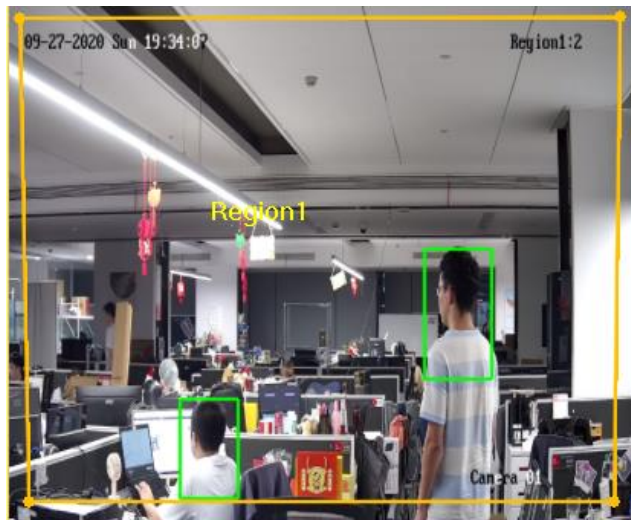
Target Size pixel

Target Displacement pixel

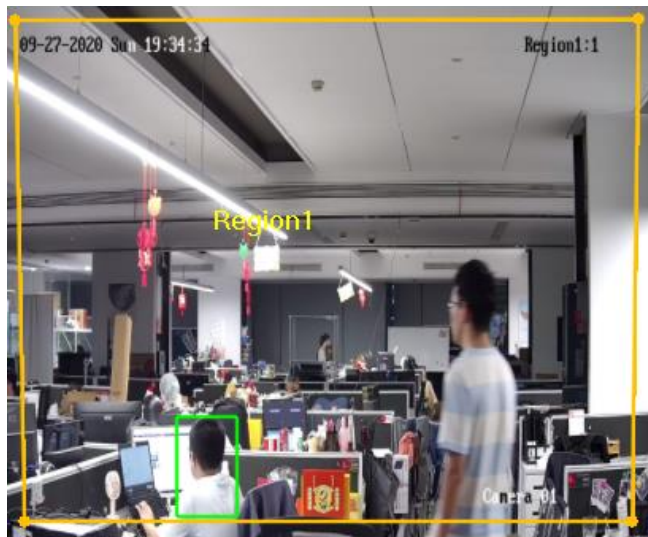
Min. Waiting Duration s ✔ ←

Validity

Save



Min. Waiting Duration: 0s

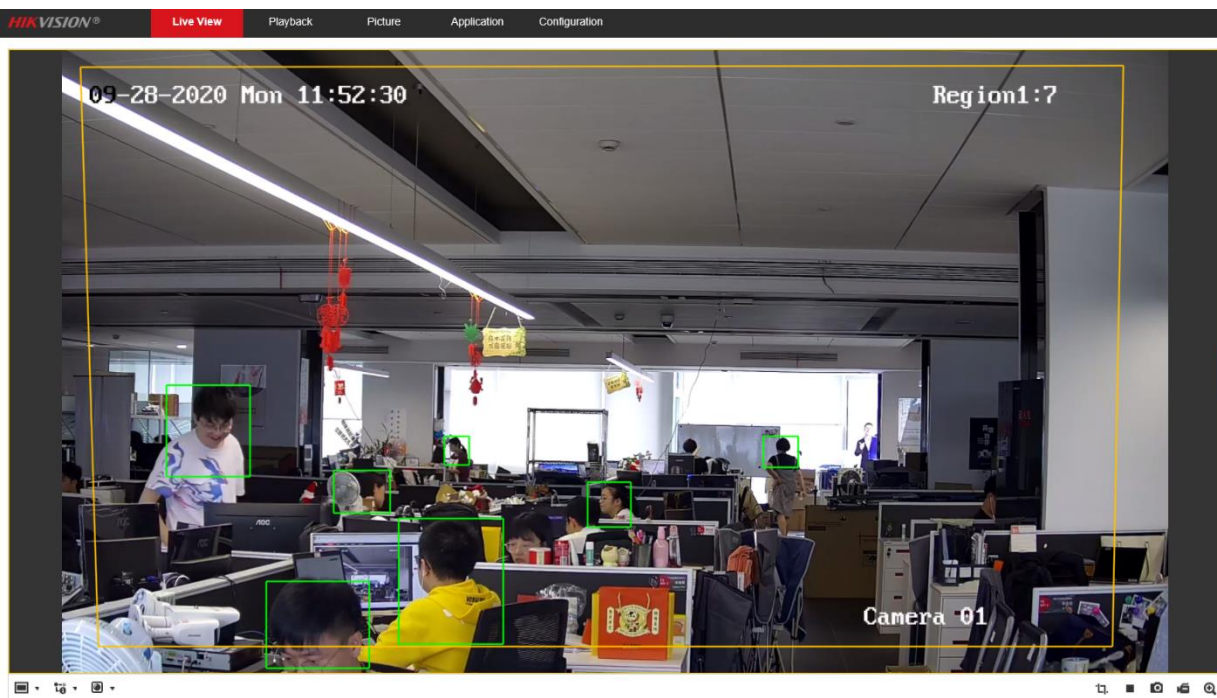
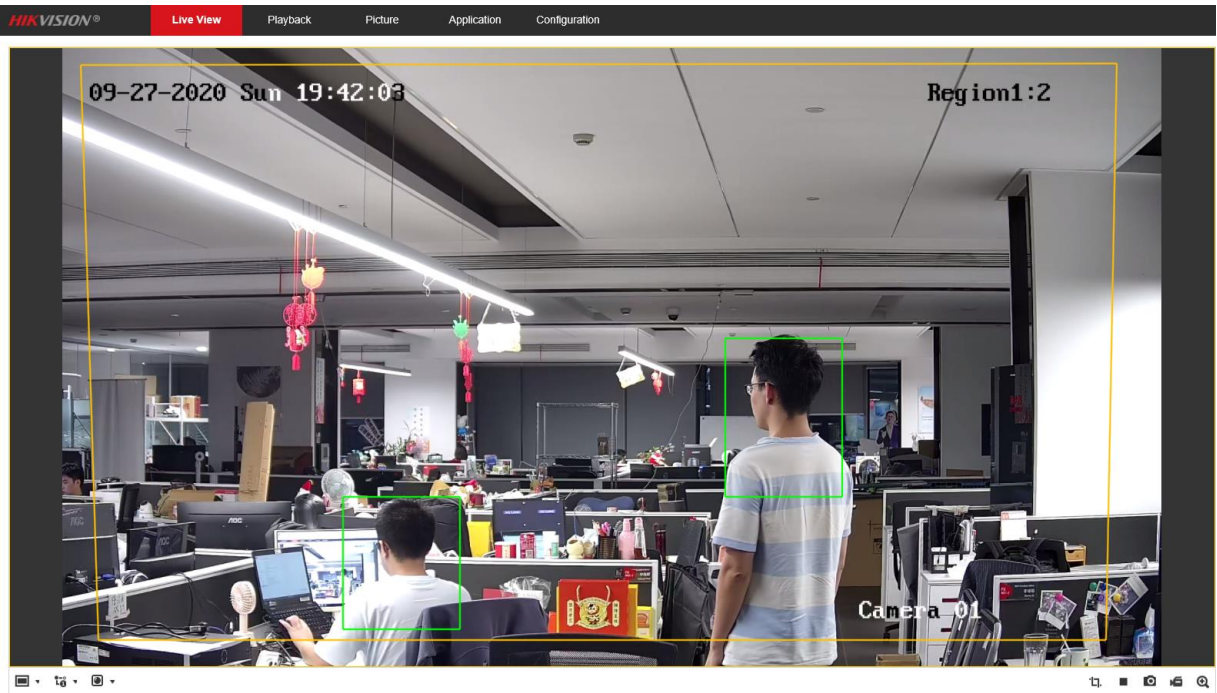


coming outside the area

Min. Waiting Duration: 5s

Title:	How to count the people in the area using Queue Management	Version:	v1.0	Date:	09/23/2020
Product:	IPC			Page:	6 of 6

3. Demonstration



【The demonstration scene in this article is NOT standard installation requesting scene. Please refer to the Queue Management Application Guidance for installation help to have a better effect.】