

iVMS-4200

Version:V2.5.1.7 build160830

Release Note

(2016-9-8 External)

General Information

Software Version	V2.5.1.7 build20160830
Network SDK Lib	V5.2.5.10 build20160817
Play Lib	V7.3.2.50 build20160816
VCA Config Lib	V3.3.17.4 build20160713
Remote Config Lib	V4.3.0.5 build20160817
SADP Lib	V4.1.1.2 build20160714

Supported devices:

Front-end, Back-end products, video intercom products, security control panels- : released before the end of April, 2016.

V2.5.1.7 Key Updates

[Live View and Playback]

1. Support setting the icon display on the toolbar of live view and playback window.

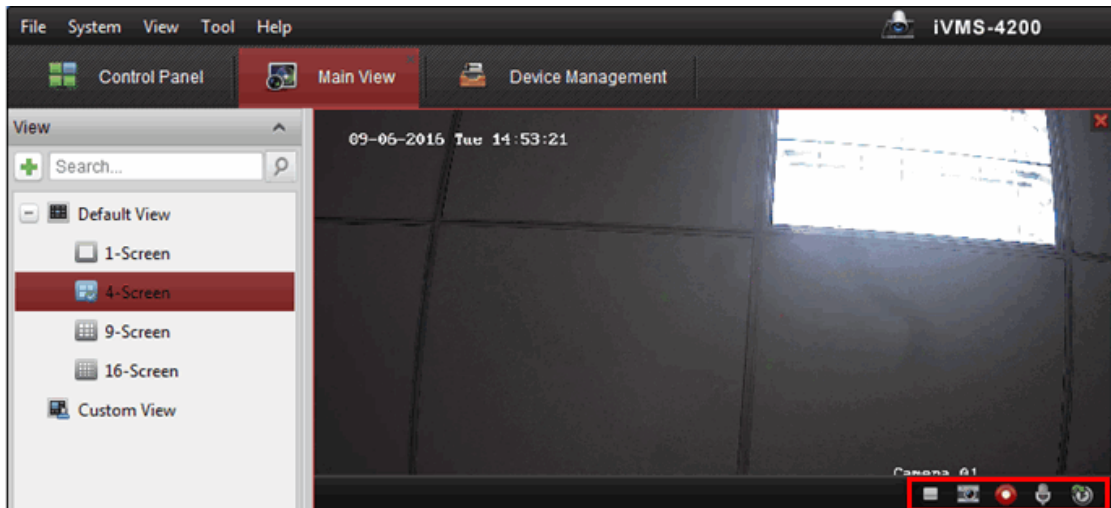


Figure 1

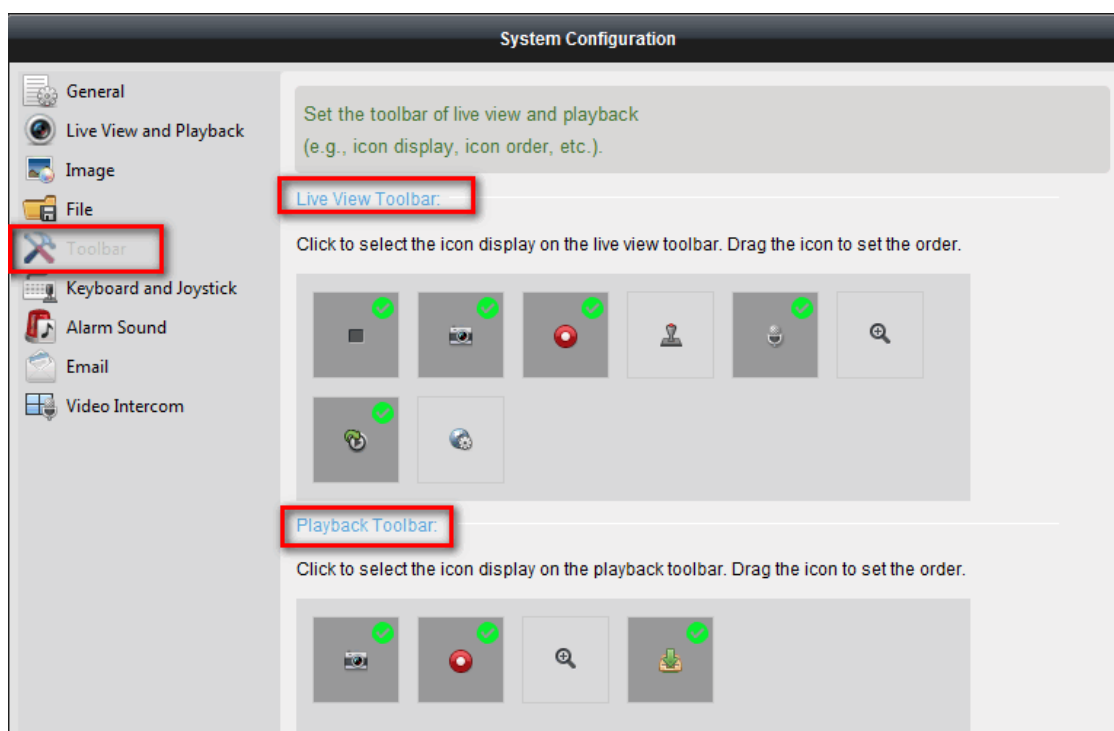


Figure 2

2. Support naming the captured picture. Right-click on the live view and playback window and choose **Other Capture Modes-Custom Capture** to edit its name.

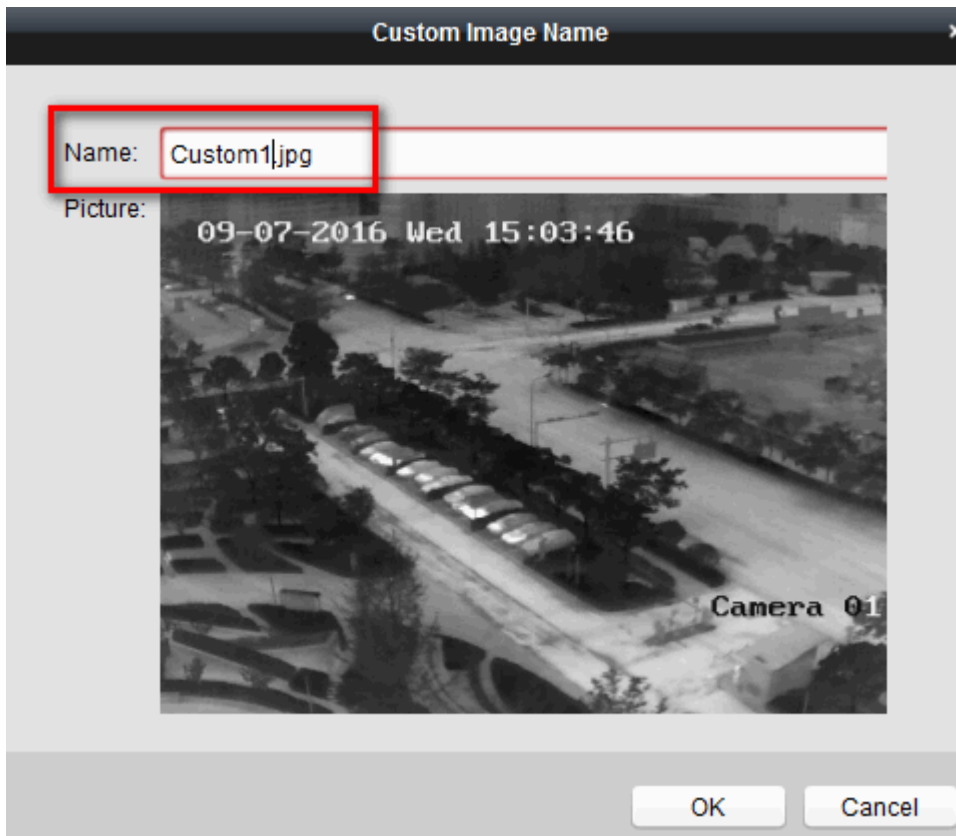


Figure 3

3. Support searching video files during up to 31 days.
4. Support Accurate Positioning on the playback window.

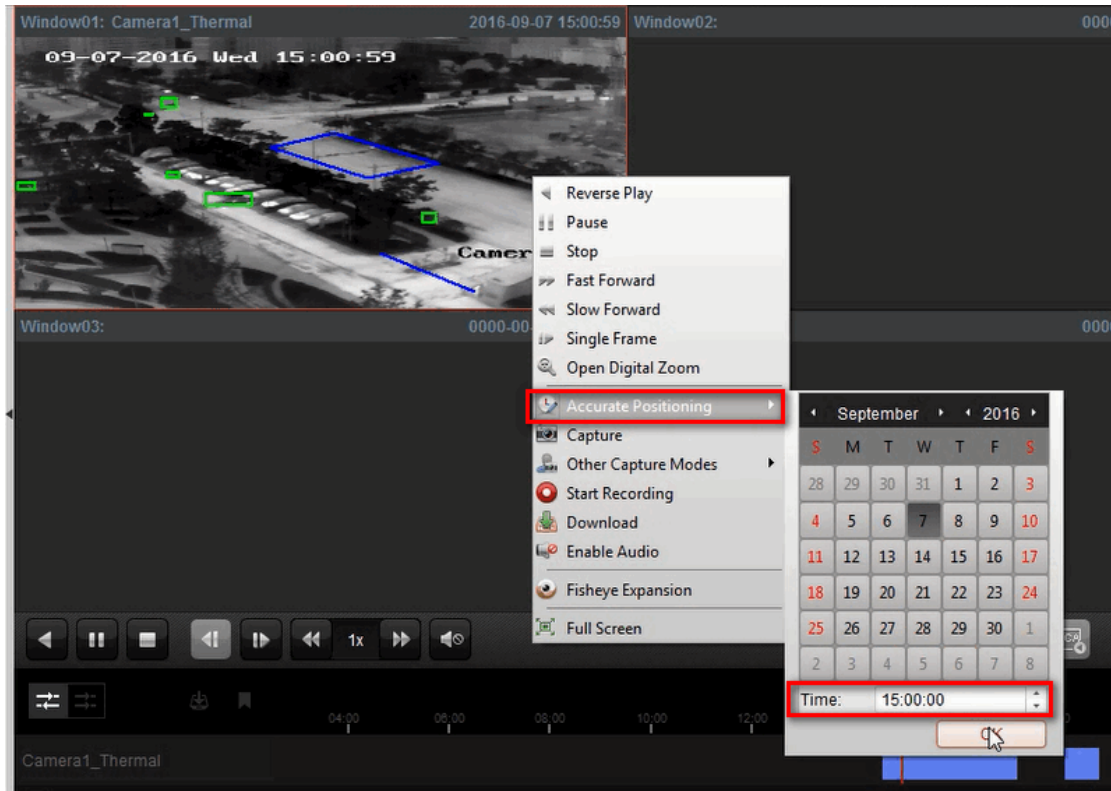


Figure 4

5. Add Frame Extracting for High-speed Playback interface. When play back the video in high-speed (8X speed and above), you can disable this function to make the image of playback more fluent to view the details.

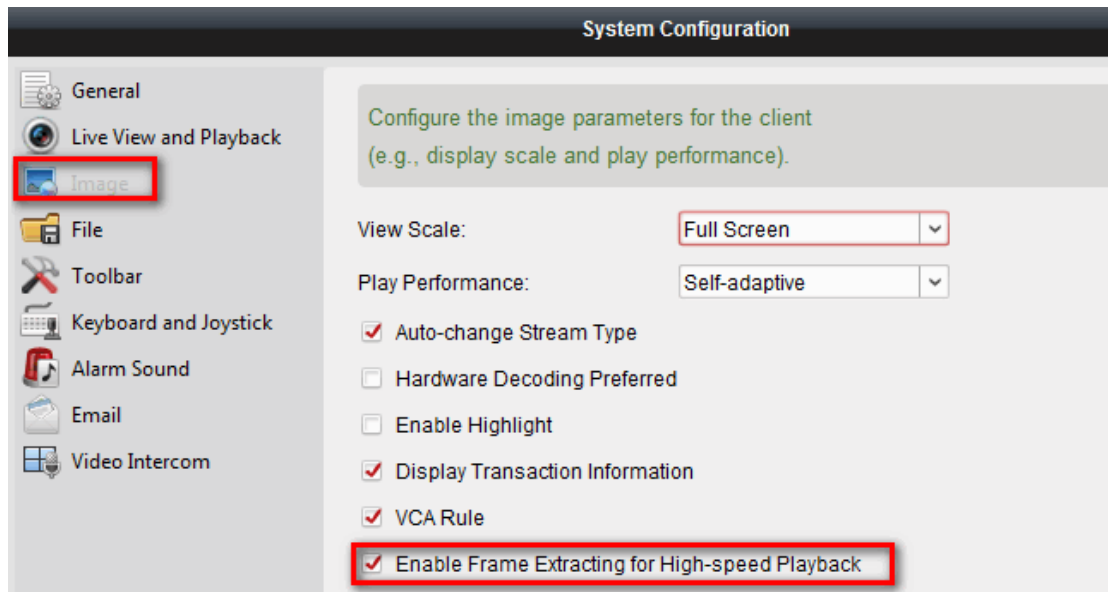


Figure 5

[Event and Alarm]

1. Add a new way on the control panel to check alarm and event details.

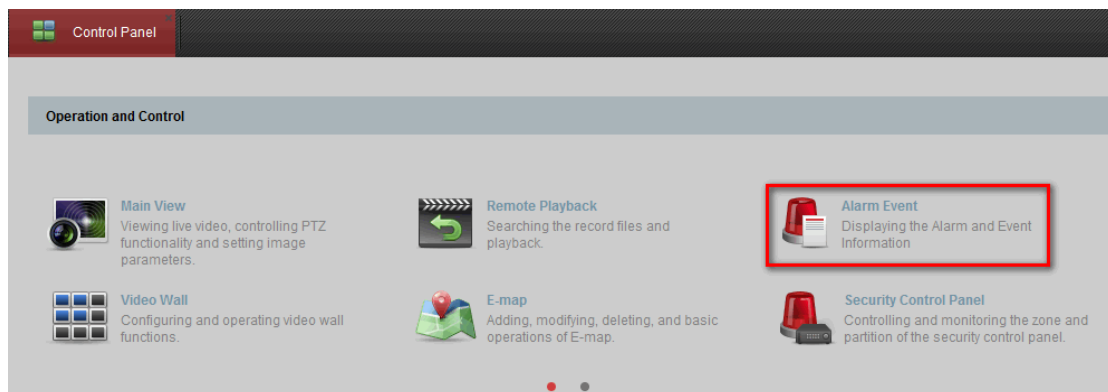


Figure 6

2. Support custom alarm sound as desired.

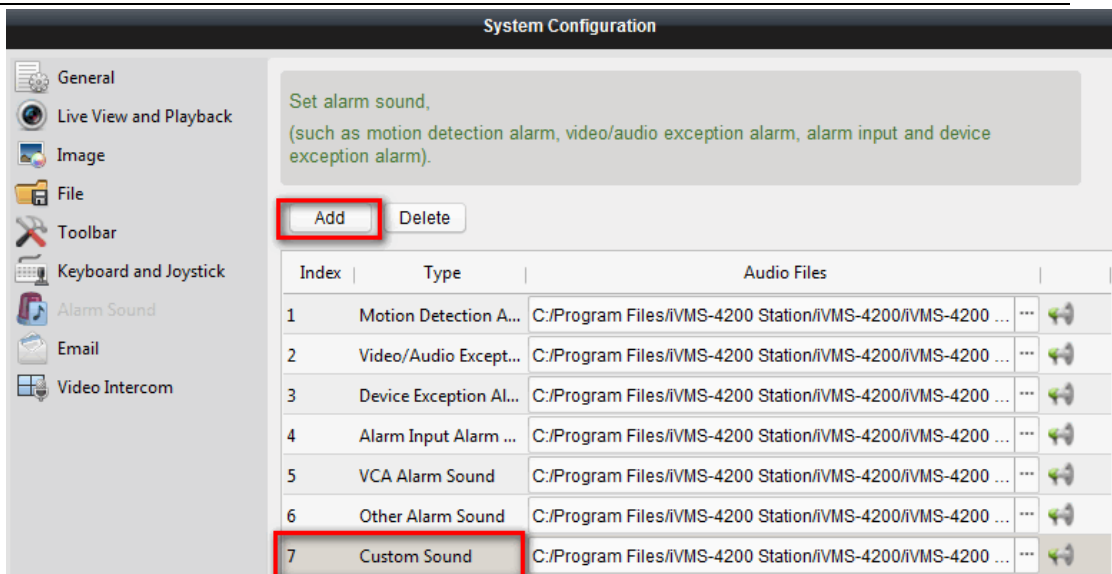


Figure 7

3. Optimize the alarm triggered pop-up image function. The Prioritize Display of Latest Alarm is checked by default and the alarm window is in 4-window division. The latest alarm will replace the earliest alarm window of the displayed four windows.

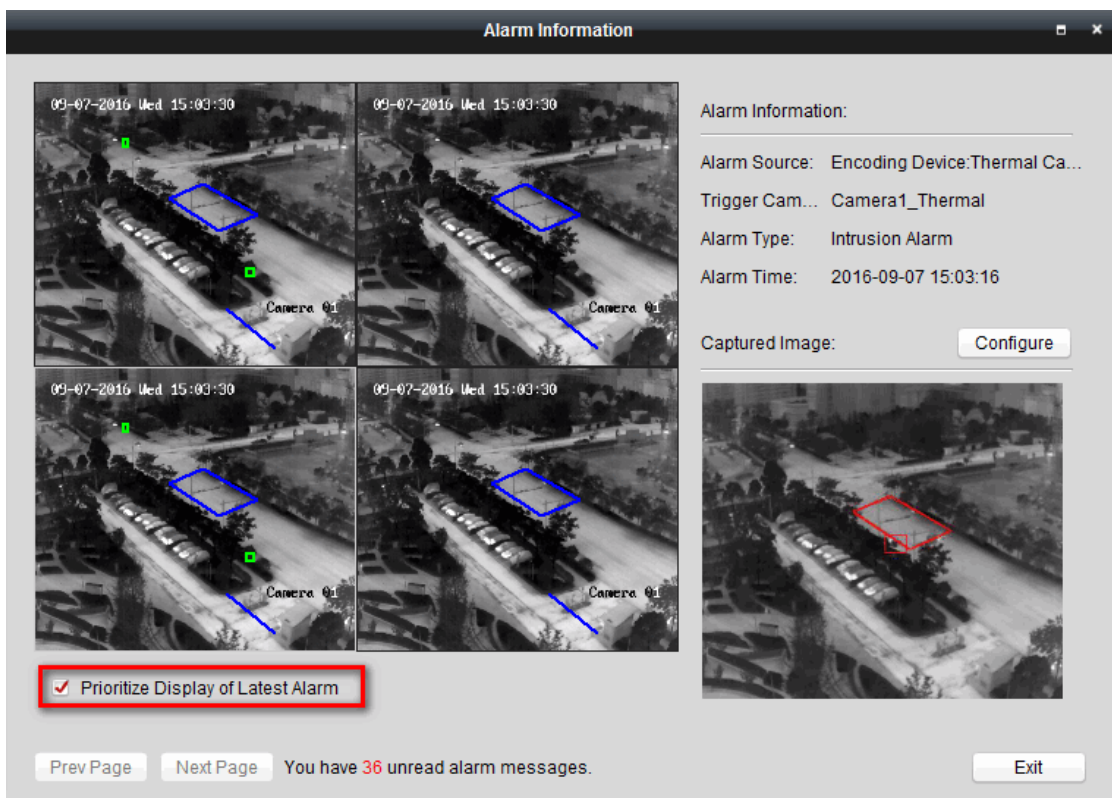



Figure 8

You can uncheck this checkbox to switch to view the current triggered alarm.

[System]

1. Provide Player  in the installation directory to view the downloaded file.
2. Add Lithuania to the language options.

[Product function]

1. Support searching the video files which contain POS information (Suitable for back-ends).
2. Support display fire source information on the live view and playback window.
3. Support Master-slave tracking on the live view window.