

HIKVISION

First Choice for Security Professionals

SADP V3.0.2.4 Build20191227

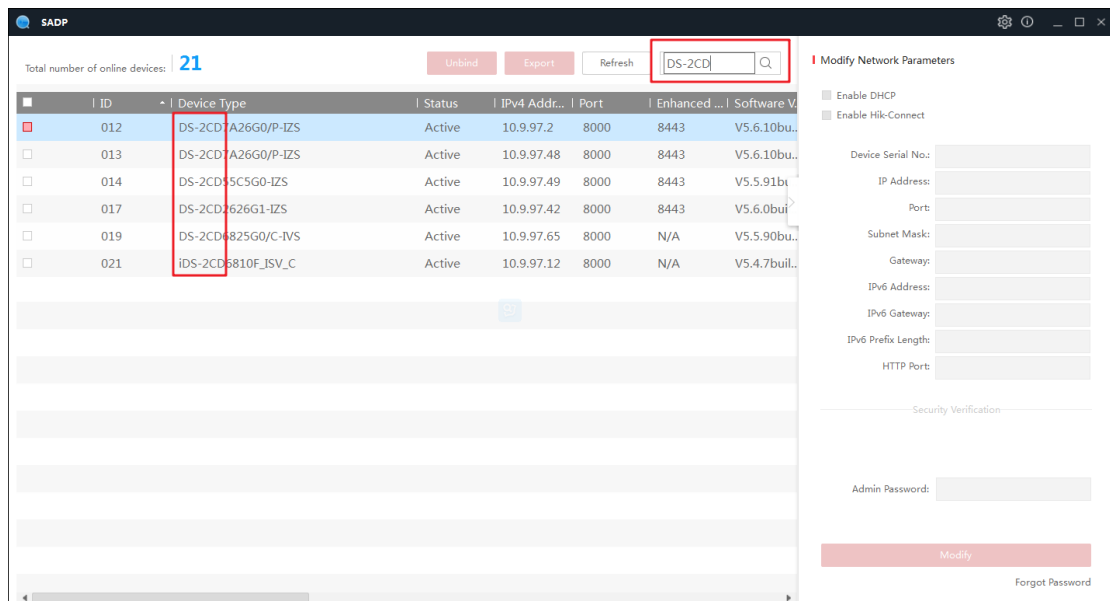
Release Notes

(2020-01-06)

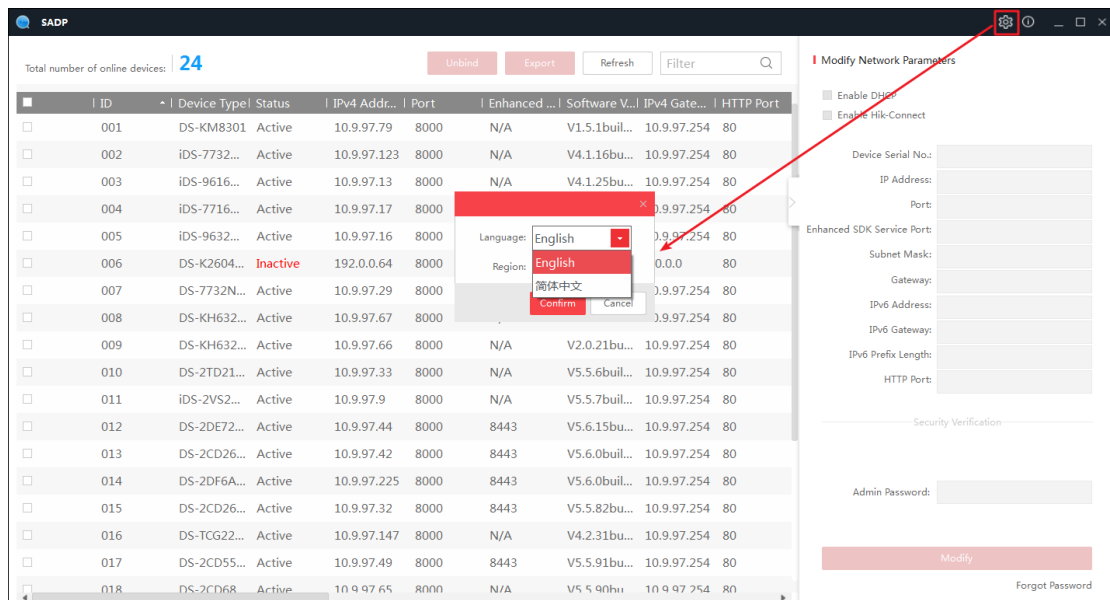
V3.0.2.4 Key Updates

1.1 New Features

1. Newly support search function, support fuzzy search.



2. Newly support for Chinese and English language switching.



3. Unbind function supports region modify, you can switch between Russia and Other regions.

The screenshot displays the SADP (Smart Audio Device Protocol) management interface. At the top, it shows the total number of online devices as 24. Below this is a table listing various devices with columns for ID, Device Type, Status, IPv4 Address, Port, Enhanced Version, Software Version, IPv4 Gateway, and HTTP Port. A context menu is open over the table, showing options for Language (English) and Region (Other, Russia, Other). On the right side, the 'Modify Network Parameters' dialog box is visible, containing fields for Device Serial No., IP Address, Port, Enhanced SDK Service Port, Subnet Mask, Gateway, IPv6 Address, IPv6 Gateway, IPv6 Prefix Length, and HTTP Port. There are also checkboxes for 'Enable DHCP' and 'Enable Risk-Connect', a 'Security Verification' section, an 'Admin Password' field, and a 'Forgot Password' link. A red box highlights the gear icon in the top right corner of the interface.

ID	Device Type	Status	IPv4 Addr...	Port	Enhanced ...	Software V...	IPv4 Gate...	HTTP Port
001	DS-KM8301	Active	10.9.97.79	8000	N/A	V1.5.1buil...	10.9.97.254	80
002	iDS-7732...	Active	10.9.97.123	8000	N/A	V4.1.16bu...	10.9.97.254	80
003	iDS-9616...	Active	10.9.97.13	8000	N/A	V4.1.25bu...	10.9.97.254	80
004	iDS-7716...	Active	10.9.97.17	8000	N/A	V4.1.25bu...	10.9.97.254	80
005	iDS-9632...	Active	10.9.97.16	8000	N/A	V4.1.25bu...	10.9.97.254	80
006	DS-K2604...	Inactive	192.0.0.64	8000	N/A	V4.1.25bu...	10.9.97.254	80
007	DS-7732N...	Active	10.9.97.29	8000	N/A	V4.1.25bu...	10.9.97.254	80
008	DS-KH632...	Active	10.9.97.67	8000	N/A	V4.1.25bu...	10.9.97.254	80
009	DS-KH632...	Active	10.9.97.66	8000	N/A	V2.0.21bu...	10.9.97.254	80
010	DS-2TD21...	Active	10.9.97.33	8000	N/A	V5.5.6buil...	10.9.97.254	80
011	iDS-2VS2...	Active	10.9.97.9	8000	N/A	V5.5.7buil...	10.9.97.254	80
012	DS-2DE72...	Active	10.9.97.44	8000	8443	V5.6.15bu...	10.9.97.254	80
013	DS-2CD26...	Active	10.9.97.42	8000	8443	V5.6.0buil...	10.9.97.254	80
014	DS-2DF6A...	Active	10.9.97.225	8000	8443	V5.6.0buil...	10.9.97.254	80
015	DS-2CD26...	Active	10.9.97.32	8000	8443	V5.5.82bu...	10.9.97.254	80
016	DS-TCG22...	Active	10.9.97.147	8000	N/A	V4.2.31bu...	10.9.97.254	80
017	DS-2CD55...	Active	10.9.97.49	8000	8443	V5.5.91bu...	10.9.97.254	80
018	DS-2CD68...	Active	10.9.97.65	8000	N/A	V5.5.90bu...	10.9.97.254	80