



How to use Auto backup function in NVR

Quick Guide

HIKVISION TECHNICAL SUPPORT TEAM

2021-11-10

How to use Auto backup function in NVR

Notice:

The Auto backup function only can be used to device with eSATA output.

Preparation:

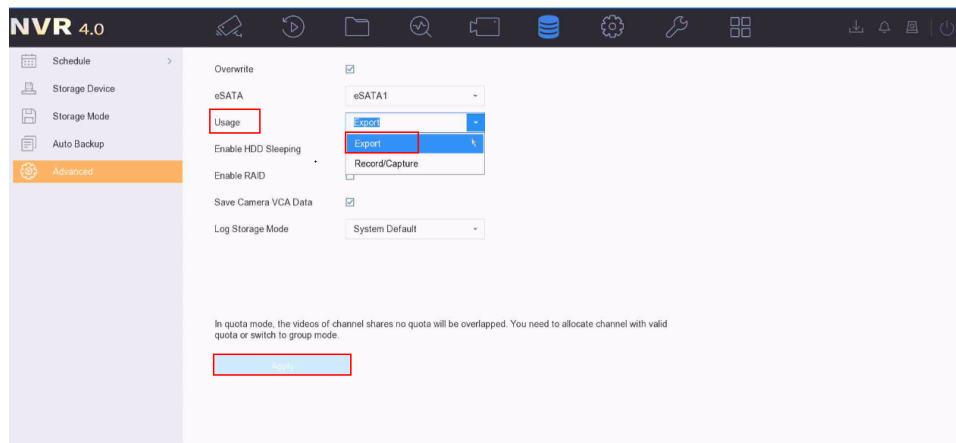
Before you use Auto backup function, you need to connect the storage device to eSATA output with eSATA cable, also connect it to the power supply. The storage device had better use enterprise-class HDD. See the pictures below:



Step 1:

In local side, goes to the menu: Storage –Advanced:

- 1) Choose the eSATA Usage as Export;
- 2) Then apply. See the picture below:

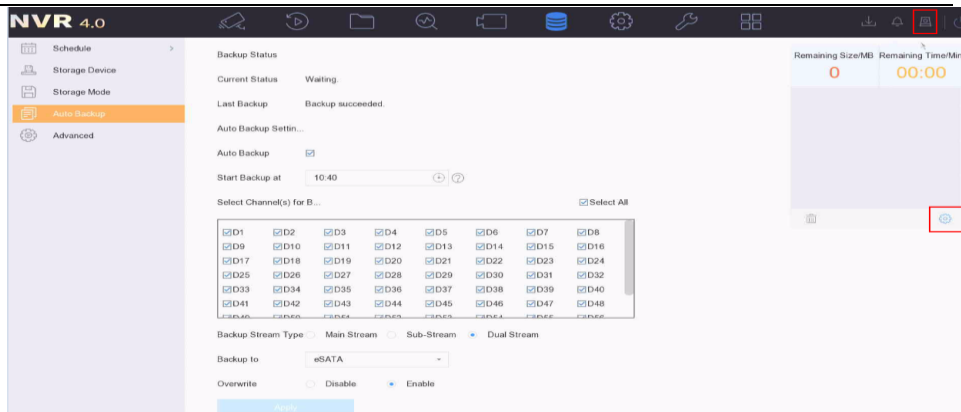


Step 2:

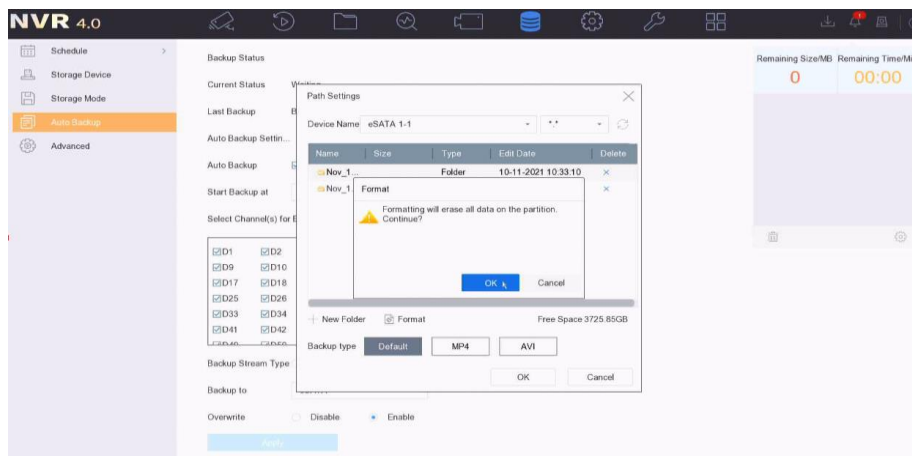
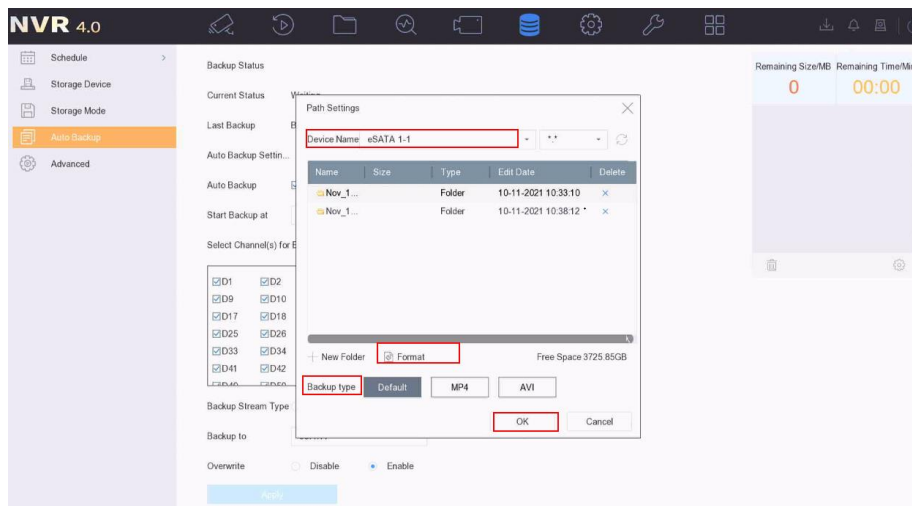
Goes to the menu in top right: Backup-Setting:

- 1) Click the setting menu, see the following picture:



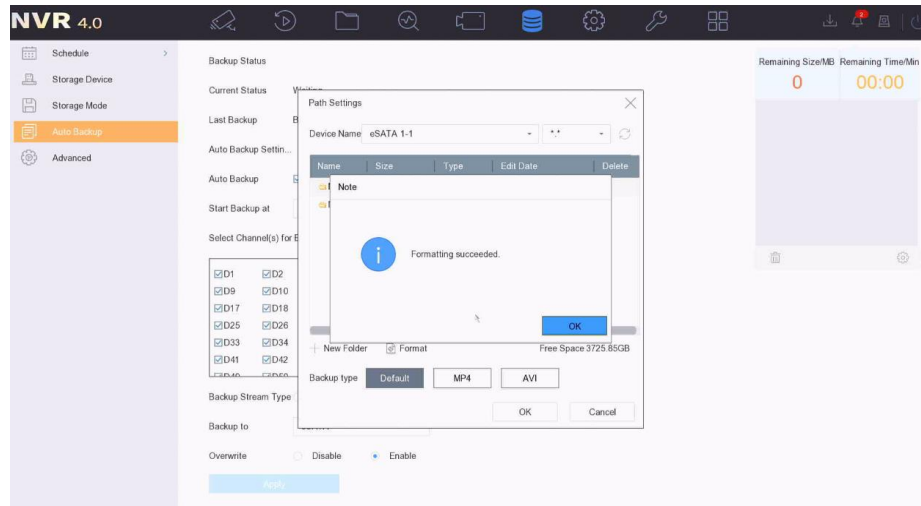


2) In the path setting choose the eSATA device and backup type; click the Format to erase all data.



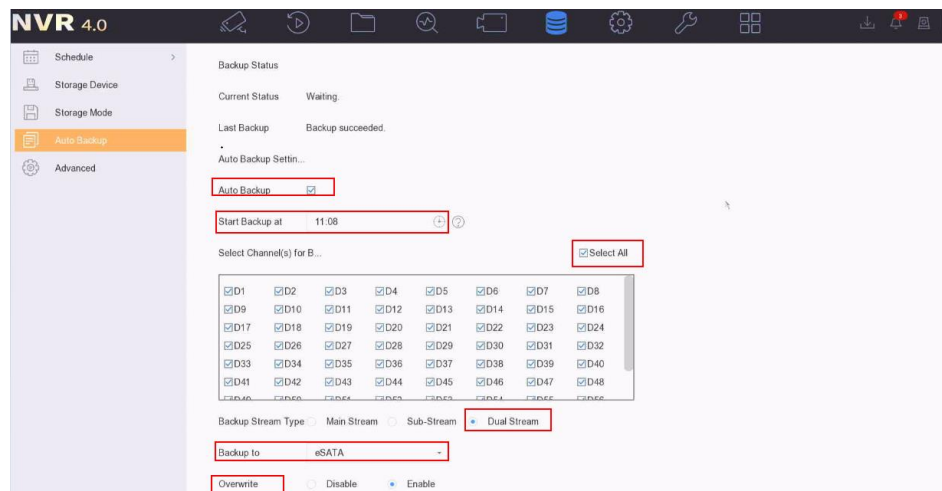
3) After format succeed, then click OK. See the following picture:





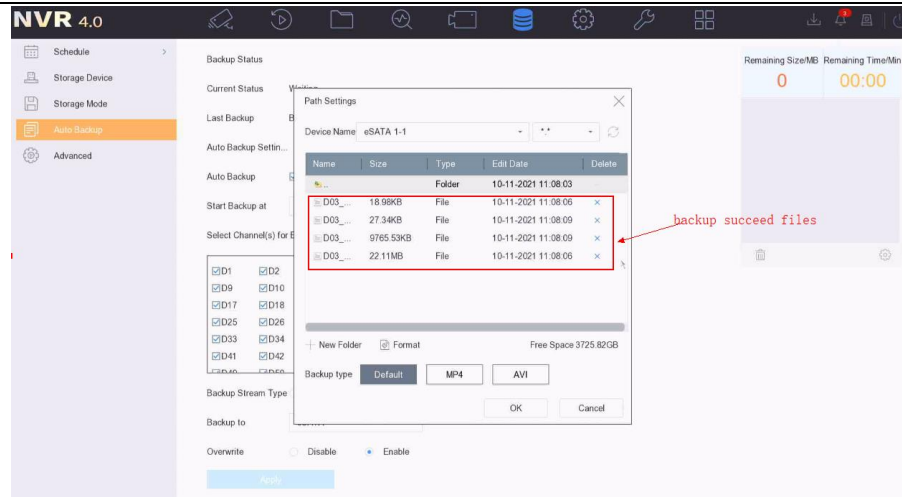
Step 3: Goes to the menu: Storage-Auto Backup. (either local side or web side)

- 1) Configure all parameters: enable the Auto Backup; choose the start time; choose the channels; choose the stream and eSATA and finally whether to be overwrite.
- 2) Click Apply to save it. See the following picture.



- 3) When the time changes to the time you set, the eSATA starts auto backup, the Current Status will show backing up. After it finished it will show Last Backup: succeed. Also in the backup-setting you can see the backed up files. See the following picture.





First Choice for Security Professionals
Hikvision Technical Support

