



How to use Monitor NVR add WiFi camera

Title:	How to use Monitor NVR add WiFi camera	Version:	v1.0	Date:	03/30/2021
Product:	Network Video Recorder			Page:	1 of 12

How to use Monitor NVR add WiFi camera

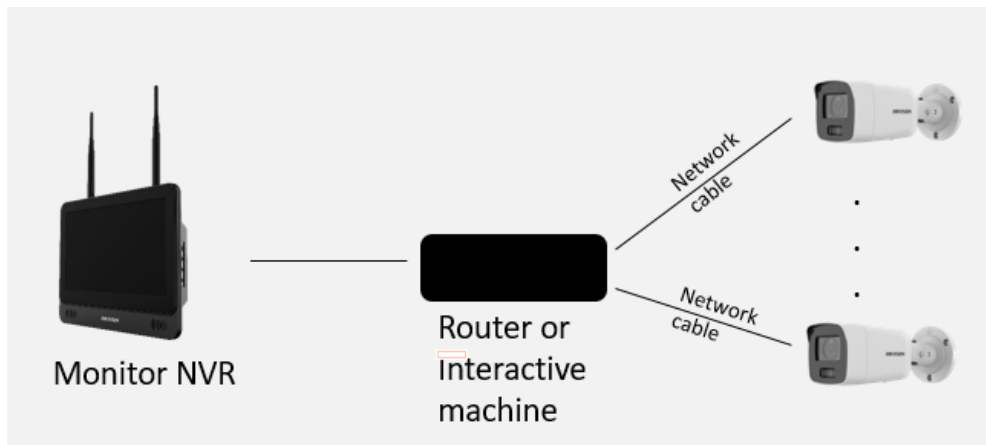
(DS-7600NI-L Series)

一、intruduction

1. Application scenario

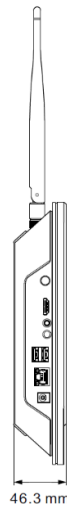
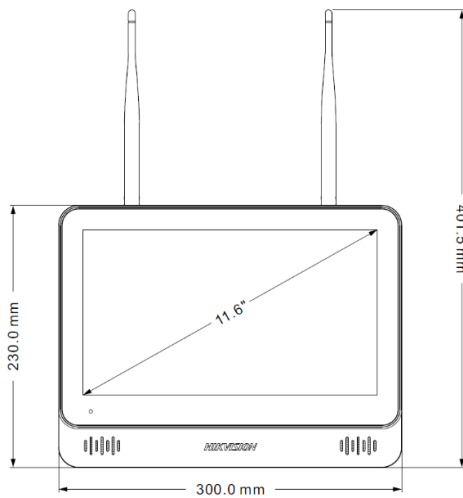
The integrated design of video recorder+display integrates video storage, preview/playback display, Wi-Fi and other functions. One-stop solution to the selection and configuration of back-end monitoring equipment, convenient for users to purchase and install; And the highly integrated design helps to solve the problem of common monitoring solutions occupying space in small scenes.

It is recommended to access the 1-8 channel 200W camera, covering the small and micro businesses or household scenes below the 8 channels;



Title:	How to use Monitor NVR add WiFi camera	Version:	v1.0	Date:	03/30/2021
Product:	Network Video Recorder			Page:	1 of 12

2. Appearance



From top to bottom:

switch

1*HDMI output interface

1*3.5mm audio input interface

1*3.5mm audio output interface

2*USB 2.0 interface

1*LAN interface

Support a variety of installation methods such as tabletop flat (accessory tabletop bracket) or wall-mounted (accessory includes wall-mounted bracket) to meet the placement requirements of different scenes;

3. Function

WiFi: 2x2 MIMO, dual antenna, 4/8 channel IP camera input, maximum wireless coverage 120m;

Display: 2x2 preview, support external HDMI, homologous output, 11.6 inch ultra-high definition LCD screen, maximum resolution 1920 * 1080;

Decoding ability: 4x1080P, support H.265, Smart 265, maximum support for access to 400W IPC;

Storage: 1 SATA interface for 2.5-inch hard disk connection, up to 4TB.

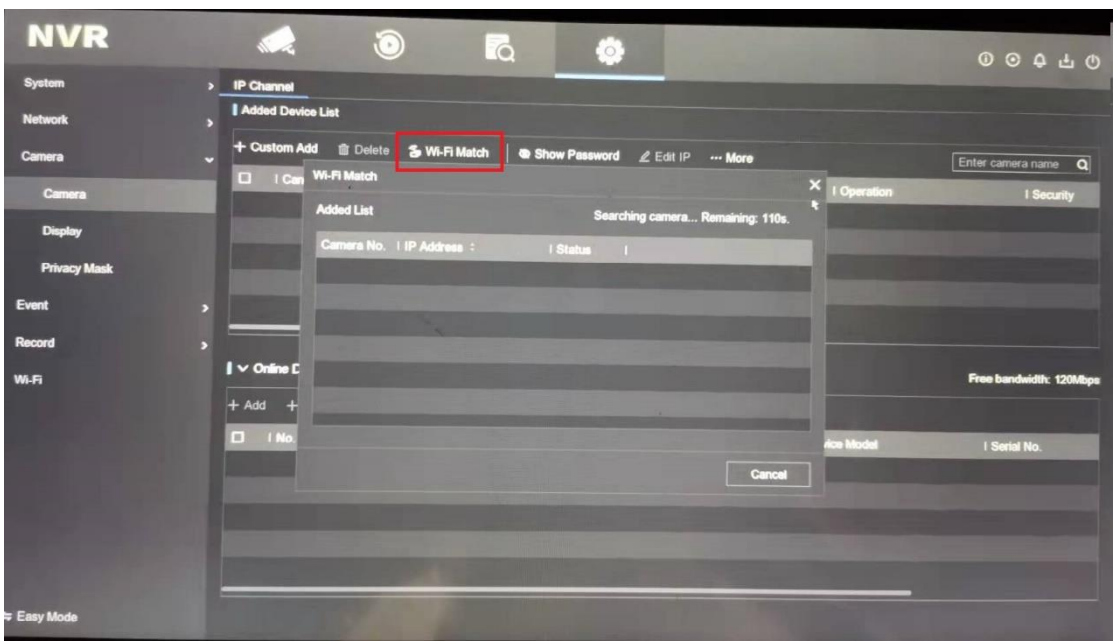
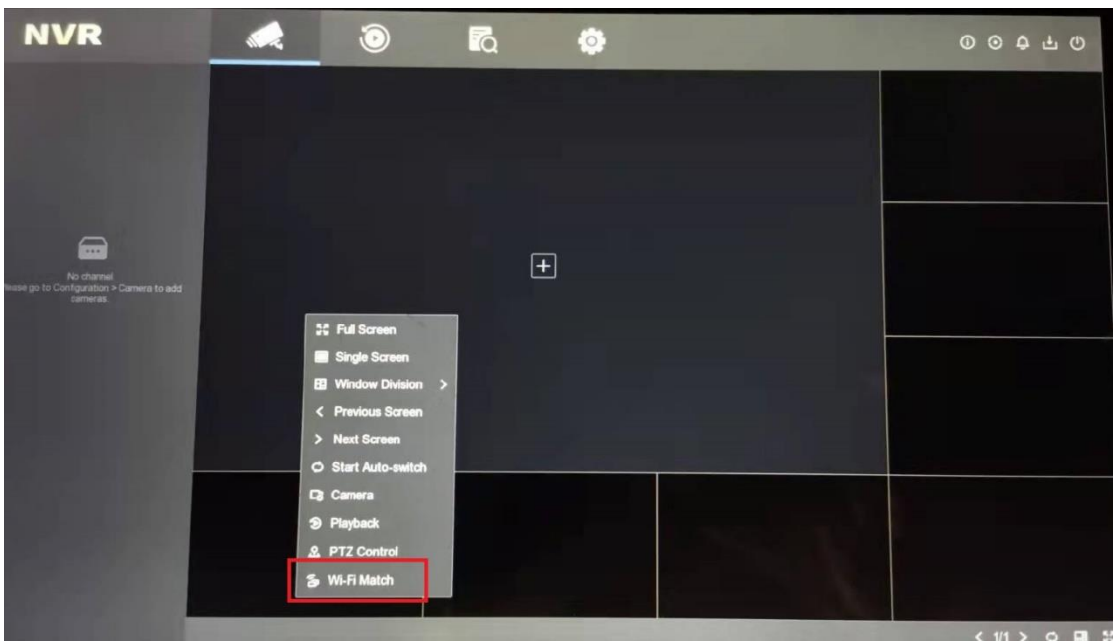
Note: 2x2MIMO refers to two inputs in and two outputs out. MIMO (Multiple-Input Multiple-Output) technology refers to the use of multiple transmit antennas and receive antennas at the transmitter and receiver to transmit and receive signals through multiple antennas at the transmitter and receiver, so as to improve communication quality

二、 Add wifi camera (network cable cannot be connected)

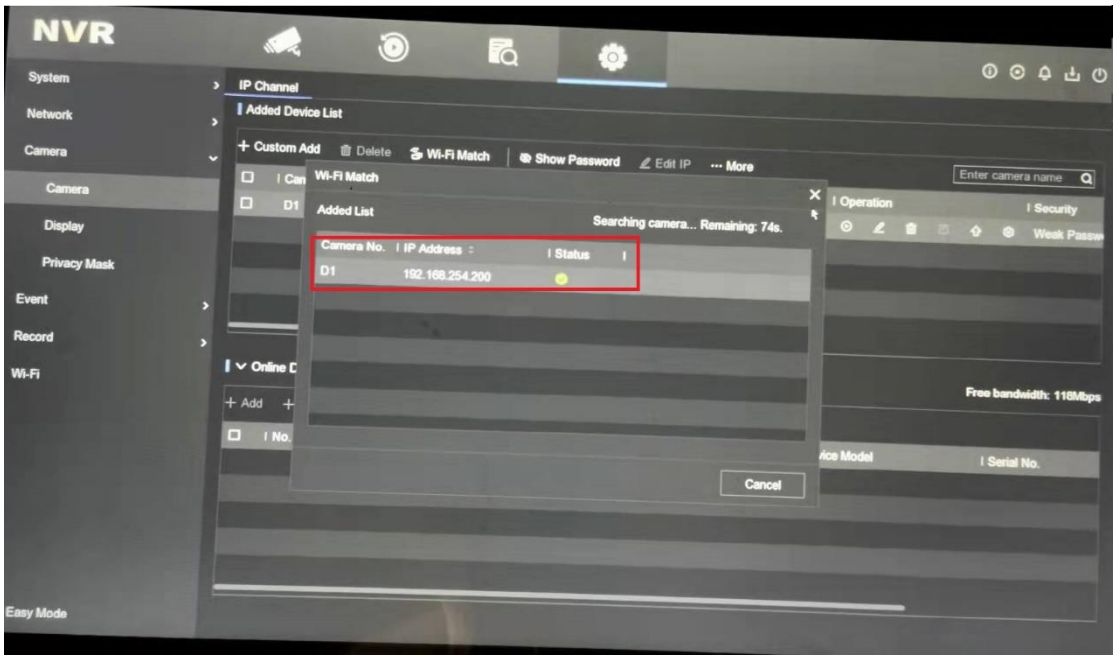
1. If the camera is not activated

Right-click on the preview interface (or on the camera add page) and click Wi-Fi Match. All powered cameras will be automatically searched and added.

Title:	How to use Monitor NVR add WiFi camera	Version:	v1.0	Date:	03/30/2021
Product:	Network Video Recorder			Page:	2 of 12

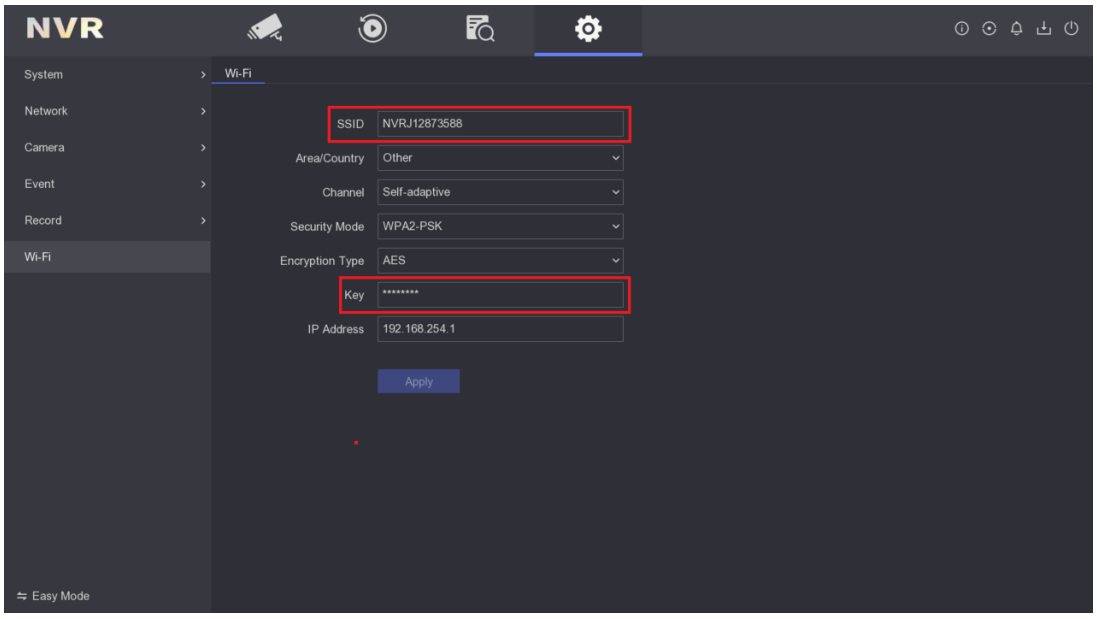


Title:	How to use Monitor NVR add WiFi camera	Version:	v1.0	Date:	03/30/2021
Product:	Network Video Recorder			Page:	3 of 12



2.If the camera is activated

(1) configure ssid and wifi password on NVR



(2) wifi camera configuring are the same as above, After configuring , it will be displayed in the list.

Title:	How to use Monitor NVR add WiFi camera	Version:	v1.0	Date:	03/30/2021
Product:	Network Video Recorder			Page:	4 of 12

Configuration | Platform Access | HTTPS | QoS | **Wi-Fi** | WLAN AP | Integration Protocol | Smooth Streaming | Wi-Fi Auto Cascade

Enable The Wlan Hotspot will be disabled after the Wi-Fi being enabled.

No.	SSID	Working Mode	Security Mode	Channel	Signal Strength	Speed(Mbps)	Connection Status
1	NVRJ12873588	Manage	WPA2-personal	1	81	150	Connected
2	HIK-Office	Manage	WPA2-personal	1	61	150	Disconnected
3	HIK-Office	Manage	WPA2-personal	11	56	150	Disconnected
4	HAP_PUAZCY	Manage	WPA2-personal	11	49	150	Disconnected
5	HIK-Office	Manage	WPA2-personal	6	49	150	Disconnected
6	HIK-Office	Manage	WPA2-personal	11	48	150	Disconnected
7	HIK-Office	Manage	WPA2-personal	11	48	150	Disconnected
8	HIK-Office	Manage	WPA2-personal	6	48	150	Disconnected
9	HIK-Office	Manage	WPA2-personal	6	48	150	Disconnected
10	HIK-Office	Manage	WPA2-personal	1	48	150	Disconnected
11	HIK-Office	Manage	WPA2-personal	1	44	150	Disconnected
12	HIK-Office	Manage	WPA2-personal	1	44	150	Disconnected
13	HAP_G84180505	Manage	WPA2-personal	11	40	54	Disconnected

Wi-Fi

SSID:

Network Mode: Manage

Security Mode:

Encryption Type:

Key 1:

8 to 63 ASCII characters or 8 to 64 hexadecimal characters

NVR | IP Channel

Added Device List

Camera No.	IP Address	Camera Name	Status	Protocol	Operation	Security
D1	192.168.254.20	IPCamera 01	●	HIKVISION	⚙️	Weak Passw
D2	10.9.96.217	kkkkkk	●	HIKVISION	⚙️	Weak Passw

Online Device List Free bandwidth: 117Mbps

No.	IP Address	Status	Operation	Protocol	Management Port	Device Model	Serial No.
1	10.9.96.45	▲	⚙️	HIKVISION	8000	DS-2TD2617B-3/PA	DS-2TD2617B-3/F
2	10.9.96.2	●	⚙️	HIKVISION	8000	DS-2DF8C442IXS-AELW	DS-2DF8C442IXS
3	10.9.96.218	▲	⚙️	HIKVISION	8000	iDS-TCM203-A	iDS-TCM203-A 20
4	10.9.96.77	●	⚙️	HIKVISION	8000	DS-D6122TH-C/T	DS-D6122TH-C/T1
5	10.9.96.53	●	⚙️	HIKVISION	8105	DS-2CD63C2F-IVS	DS-2CD63C2F-IVS

Easy Mode

(3) After the camera information is displayed in the list, click Edit to enter the device password. Batch addition is supported.

Title:	How to use Monitor NVR add WiFi camera	Version:	v1.0	Date:	03/30/2021
Product:	Network Video Recorder			Page:	5 of 12

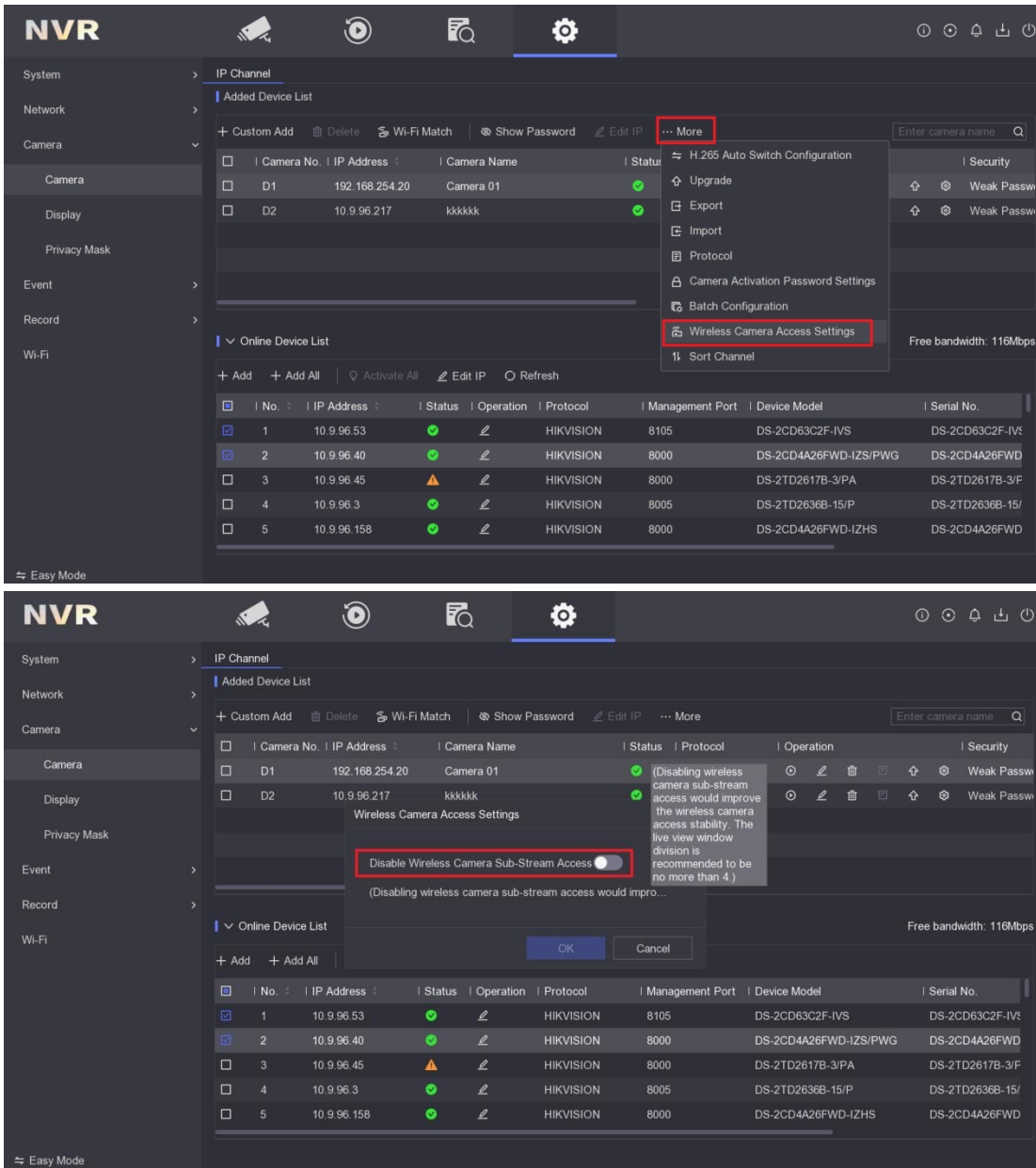
The screenshot shows the 'Edit IP Camera' dialog box in the NVR web interface. The dialog is open over the 'Added Device List' table. The dialog fields include Channel No. (D1), Channel Address (192.168.254.20), Protocol (HIKVISION), Management Port (8000), Channel Port (1), Transfer Protocol (Auto), User Name (admin), and Camera Password (masked with asterisks). A red box highlights the Camera Password field. A virtual keyboard is visible over the password field.

The screenshot shows the 'Added Device List' table in the NVR web interface. The table has columns for Camera No., IP Address, Camera Name, Status, Protocol, Operation, and Security. Camera D1 is highlighted with a red box around its Status column, which shows a green checkmark. Camera D2 is also visible with a green checkmark in the Status column.

Camera No.	IP Address	Camera Name	Status	Protocol	Operation	Security
D1	192.168.254.20	Camera 01	●	HIKVISION	⊙ ↗ 🗑️ 📶 ⚙️	Weak Passw
D2	10.9.96.217	kkkkk	●	HIKVISION	⊙ ↗ 🗑️ 📶 ⚙️	Weak Passw

Title:	How to use Monitor NVR add WiFi camera	Version:	v1.0	Date:	03/30/2021
Product:	Network Video Recorder			Page:	6 of 12

3. Turn on/off sub-code stream (can save bandwidth)



Note:

- If there is a problem with using Wi-Fi Match to add a device, please check whether the camera's green light is flashing fast. If not, you need to press and hold the reset button until you see the red light before matching;
- If the preview is unstable during use, please check the signal strength. Normal range: - 1 dbm~~ 80 dbm, see attached;
- If it is a WiFi package, you only need to power on. Once the camera is restored to the inactive state, you need to use the WiFi match function;
- If there is no picture in HC preview, please check whether the sub-code stream is closed.

Title:	How to use Monitor NVR add WiFi camera	Version:	v1.0	Date:	03/30/2021
Product:	Network Video Recorder			Page:	7 of 12

Attached:

WiFi camera signal strength

More Operation
✕

- Log Information
- System Service
- Buzzer Switch
- Wi-Fi

SSID: NVRJ12873588

Working Channel: Self-adaptive(1)

Security Mode: WPA2-PSK

IP Address: 192.168.254.1

Serial No.	Device Name	IP Address	MAC Address	Signal Strength
1	*	192.168.254.20	80:9f:9b:0a:10:97	-18 dbm

Title:	How to use Monitor NVR add WiFi camera	Version:	v1.0	Date:	03/30/2021
Product:	Network Video Recorder			Page:	8 of 12

