



How to select the installation point for PanoVu

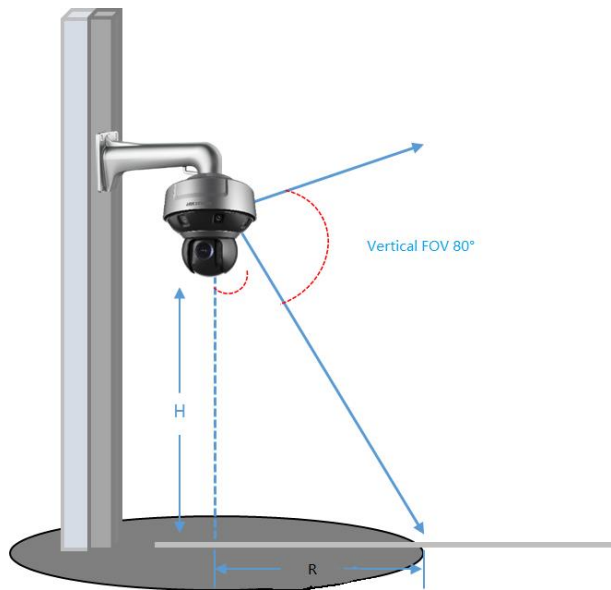
Title:	How to select the installation point for PanoVu	Version:	v1.0	Date:	12/31/2020
Product:	PanoVu Camera			Page:	1 of 15

How to select the installation point for PanoVu

1. Installation point selection standard

Note: The rationality of the installation point will influence the effect of the device.

1) Monitor the blind area calculation



H: Installation Height

R: The monitor blind area radius

$$R=0.4*H$$

2) Installation height requirement

Minimum installation height: 6m (>10m recommend)

Huge scene including tracking: 10-50m

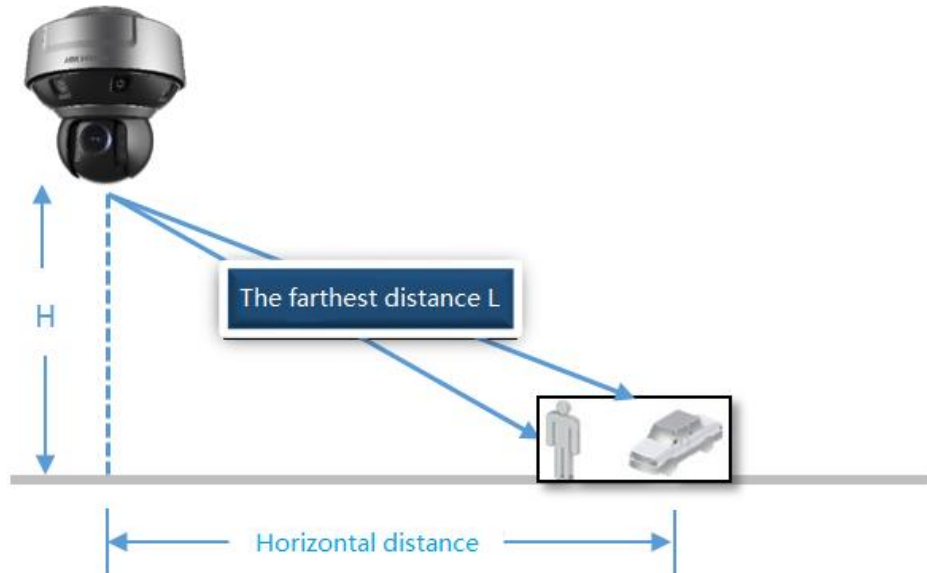


Note: The people density function needs to be calculated separately

3) Tracking distance

The farthest detection distance of object, L: 80-100m

The Horizontal distance = $\sqrt{L^2 - H^2}$



4) Avoid interference sources such as strong magnetism

Note: Airport radar, military radar, meteorological radar, signal box.

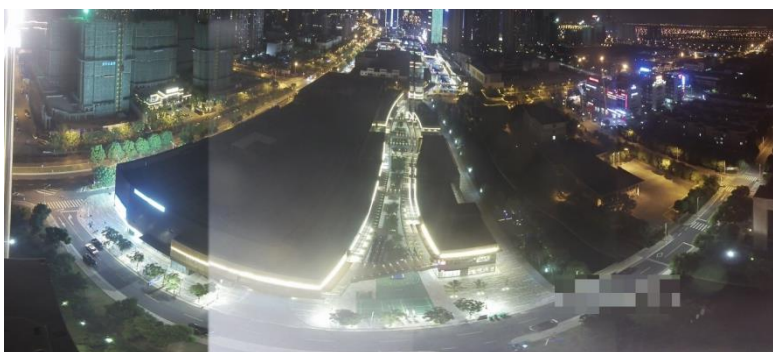


5) Near 6m without shielding

Note: The stitching problem caused by nearby occlusion cannot be optimized

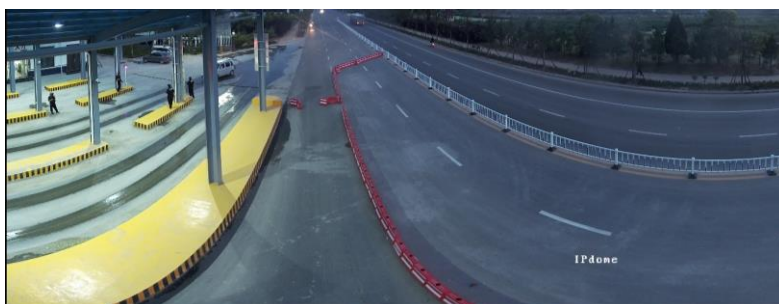


6) Avoid hard light at night



2. Installation effect reference

H=10m



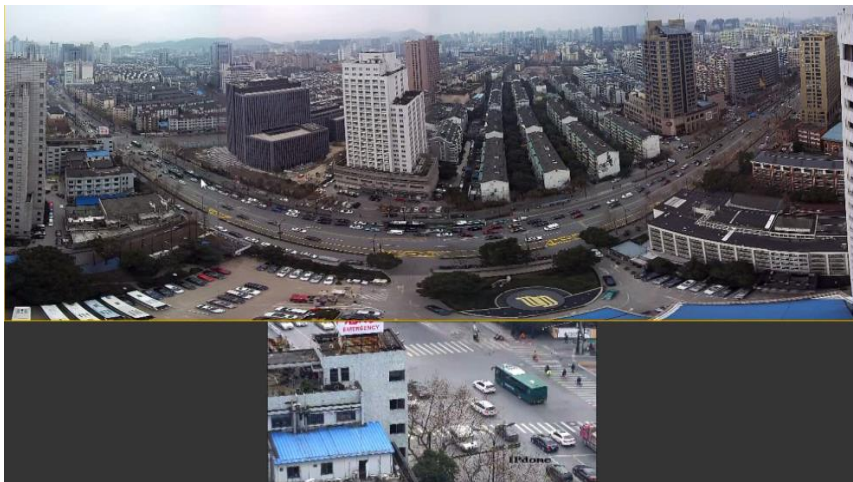
H=20m



H=40m



H=70m

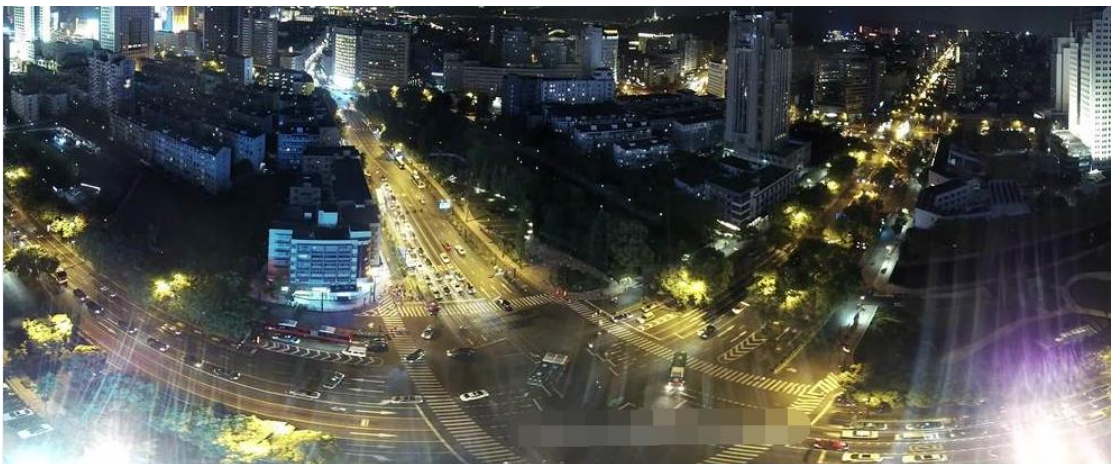


3. Improper example

1) Near with Shielding



2) Near with hard light





See Far, Go Further