



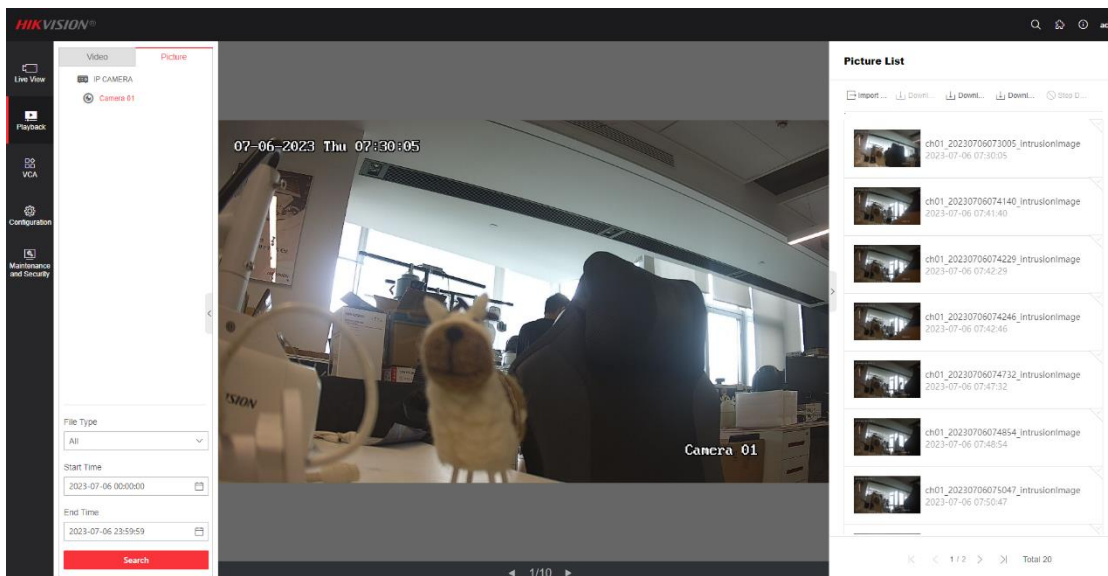
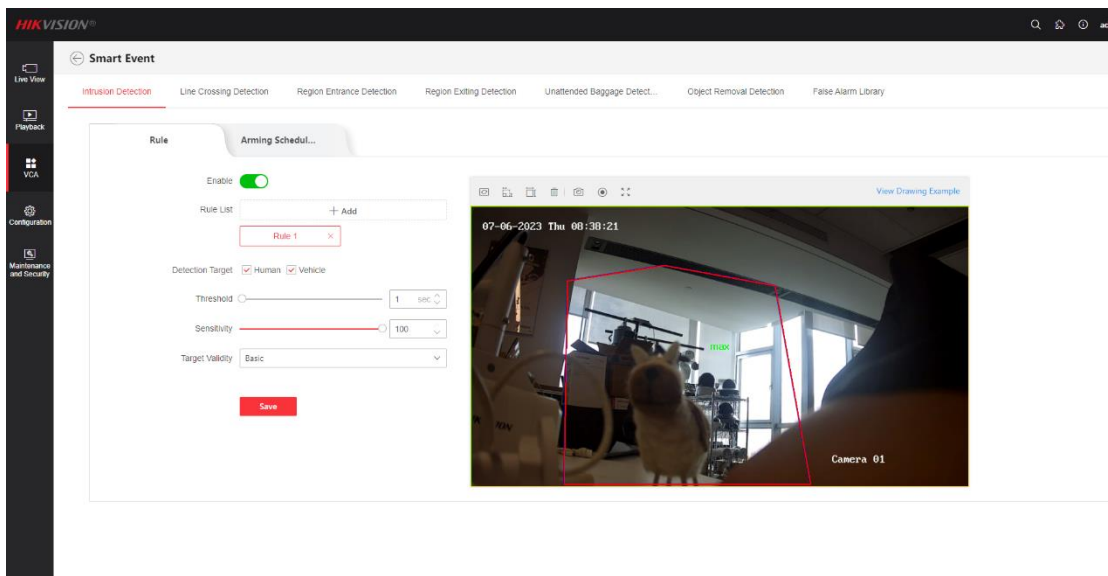
## **How to configure false alarm analysis of 3 series semi self-learning camera**

<b>Title:</b>	<b>How to configure false alarm analysis of 3 series semi self-learning camera</b>	<b>Version:</b>	v1.0	<b>Date:</b>	2023/07/06
<b>Product:</b>	IPC			<b>Page:</b>	1 of 6

# How to configure false alarm analysis of 3 series semi self-learning camera

## 1. Configure events and collect false alarm pictures

Eg: When intrusion is configured and human vehicle classification is enabled, if a false alarm is found, the non-human target is identified as a human and an alarm is triggered. At this point, the alarm images can be collected and saved, and then imported into the false alarm library for algorithm learning.



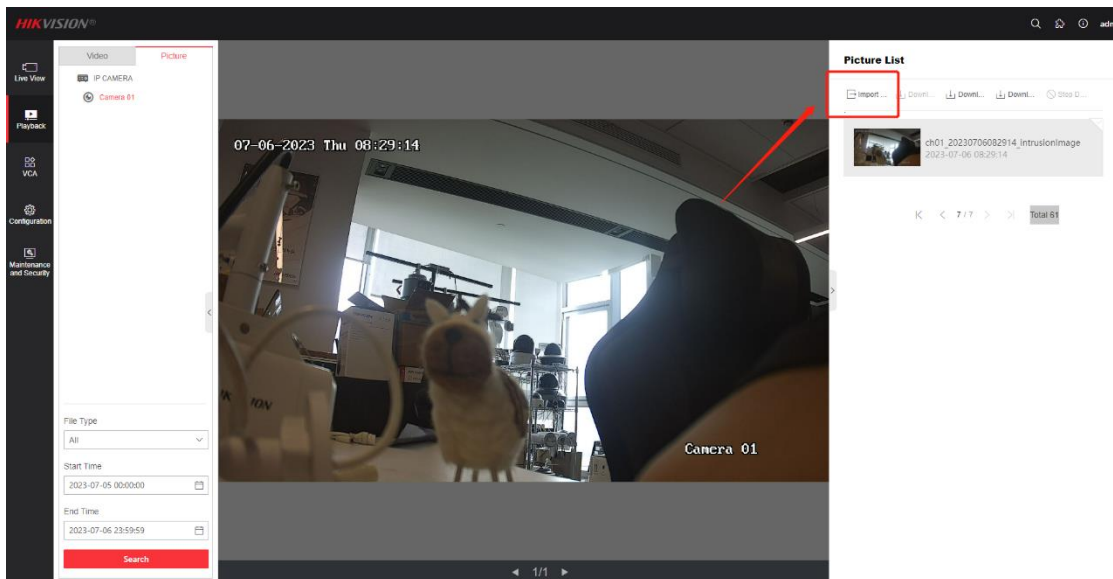
<b>Title:</b>	<b>How to configure false alarm analysis of 3 series semi self-learning camera</b>	<b>Version:</b>	v1.0	<b>Date:</b>	2023/07/06
<b>Product:</b>	IPC			<b>Page:</b>	2 of 6

## 2、 Import false alarm pictures

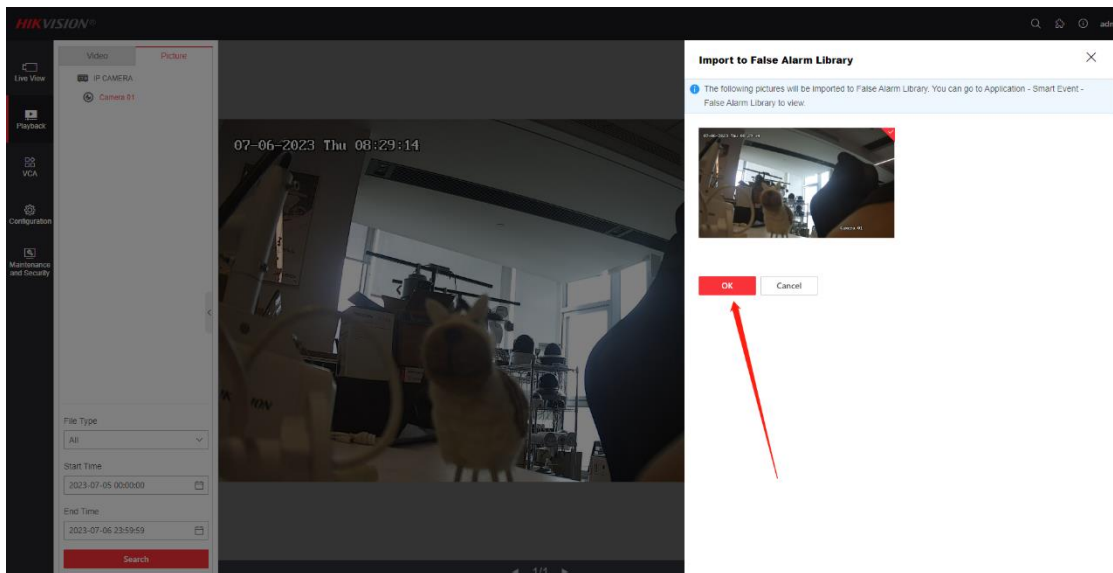
### 1) Import directly from event capture

【Playback】 - 【Picture】 - 【Import】

Select the corresponding picture and click Import to False Alarm Library

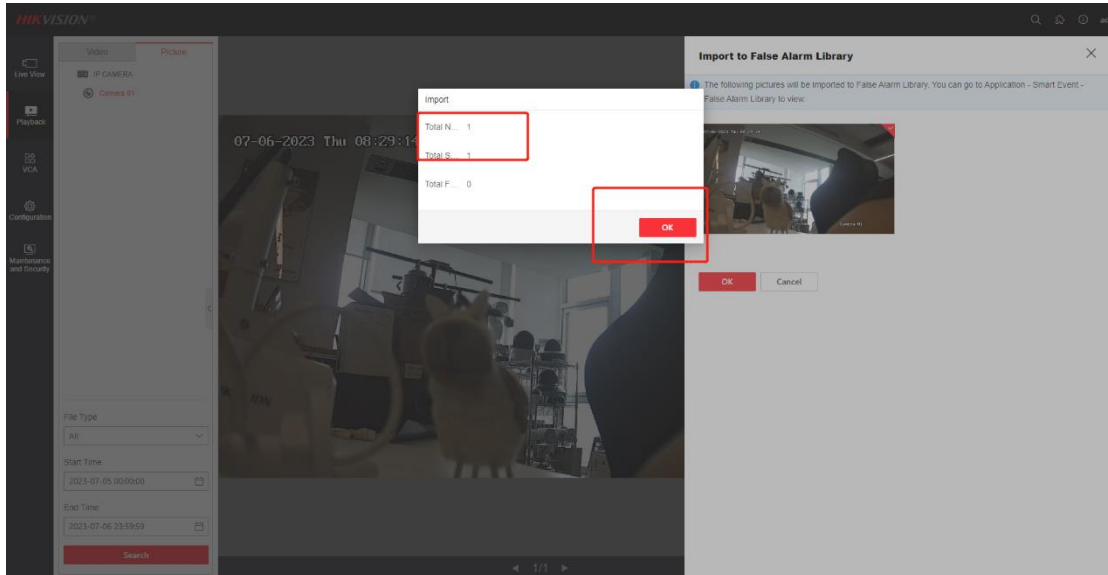


Click OK

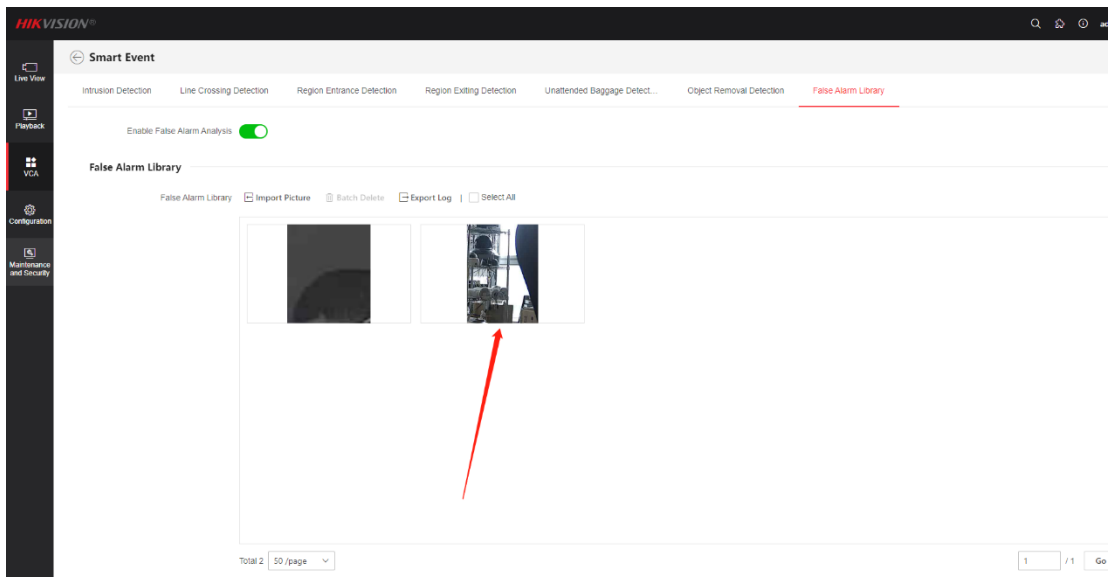


<b>Title:</b>	<b>How to configure false alarm analysis of 3 series semi self-learning camera</b>	<b>Version:</b>	v1.0	<b>Date:</b>	2023/07/06
<b>Product:</b>	IPC			<b>Page:</b>	3 of 6

Prompt for successful import



Imported pictures can be viewed in the false alarm library

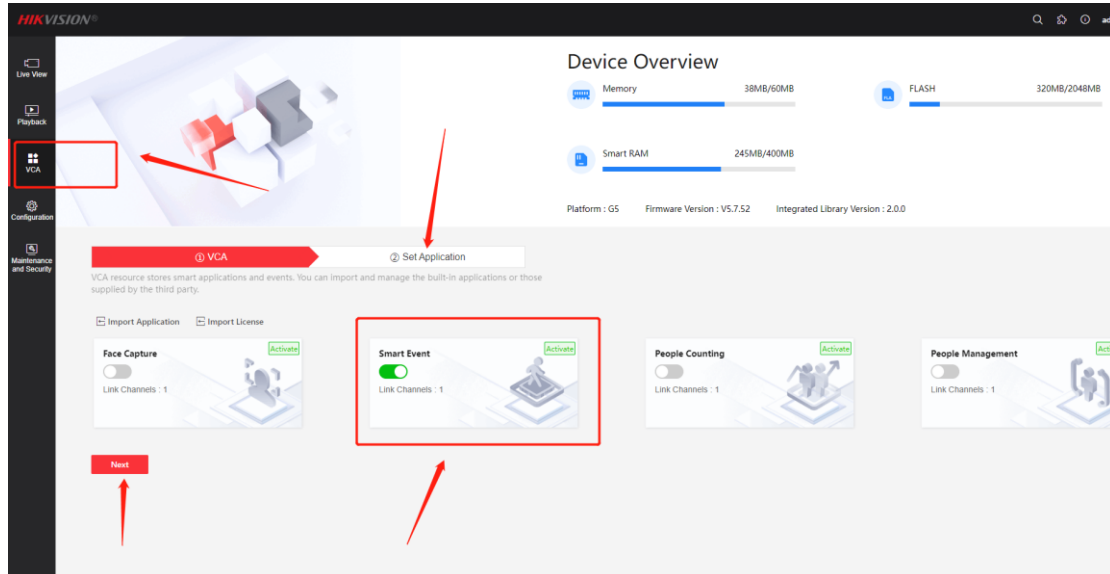


<b>Title:</b>	<b>How to configure false alarm analysis of 3 series semi self-learning camera</b>	<b>Version:</b>	v1.0	<b>Date:</b>	2023/07/06
<b>Product:</b>	IPC			<b>Page:</b>	4 of 6

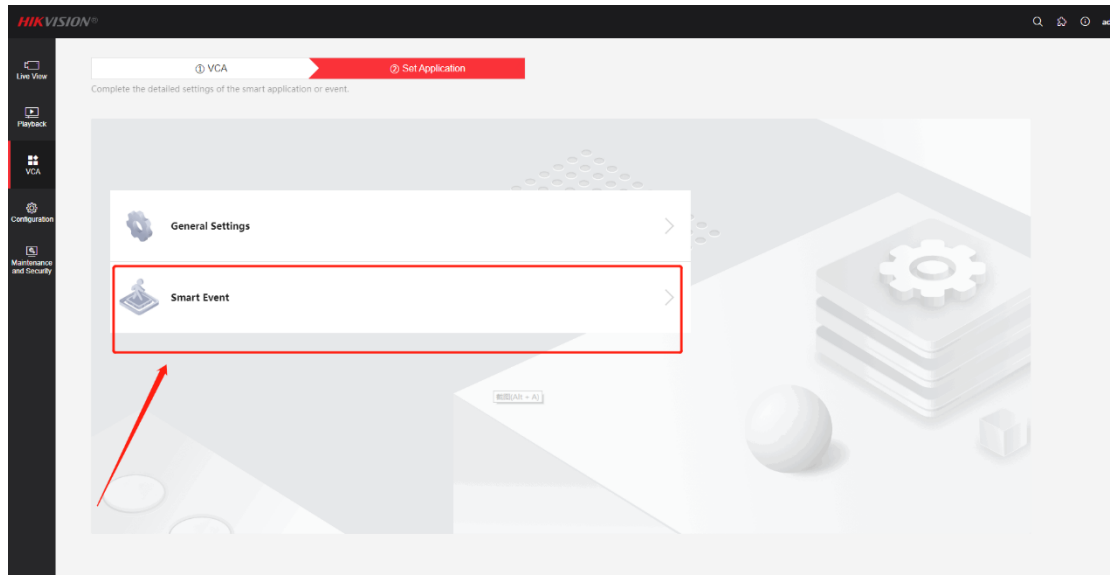
## 2) Import from VCA Resources

【VCA】 - 【Smart Event】 - 【False Alarm Library】 - 【Import Picture】

Click VCA, Enable Smart Event, then click Next or Set Application

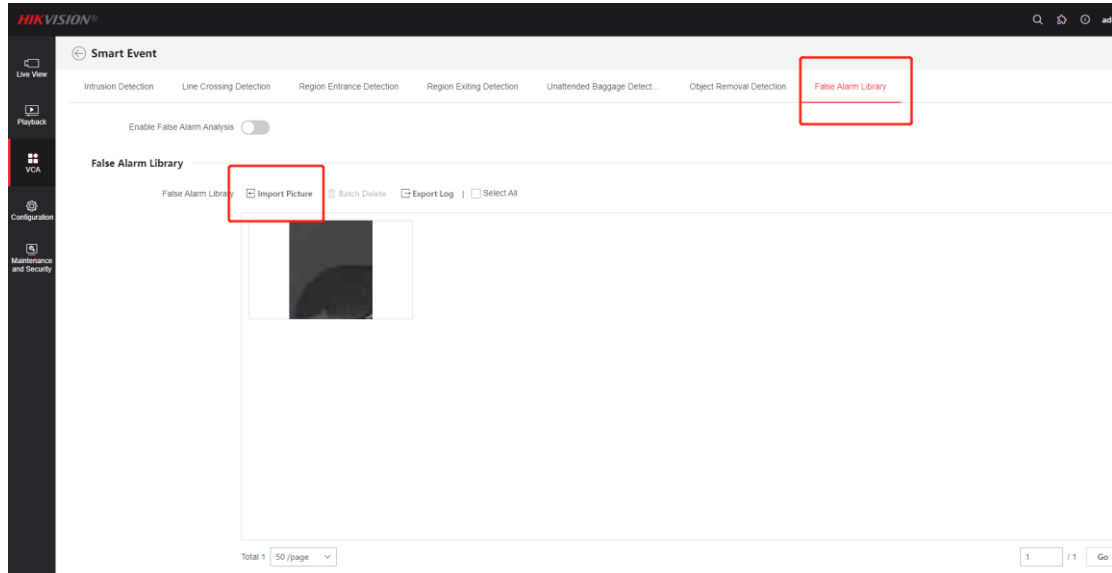


Click Smart Event

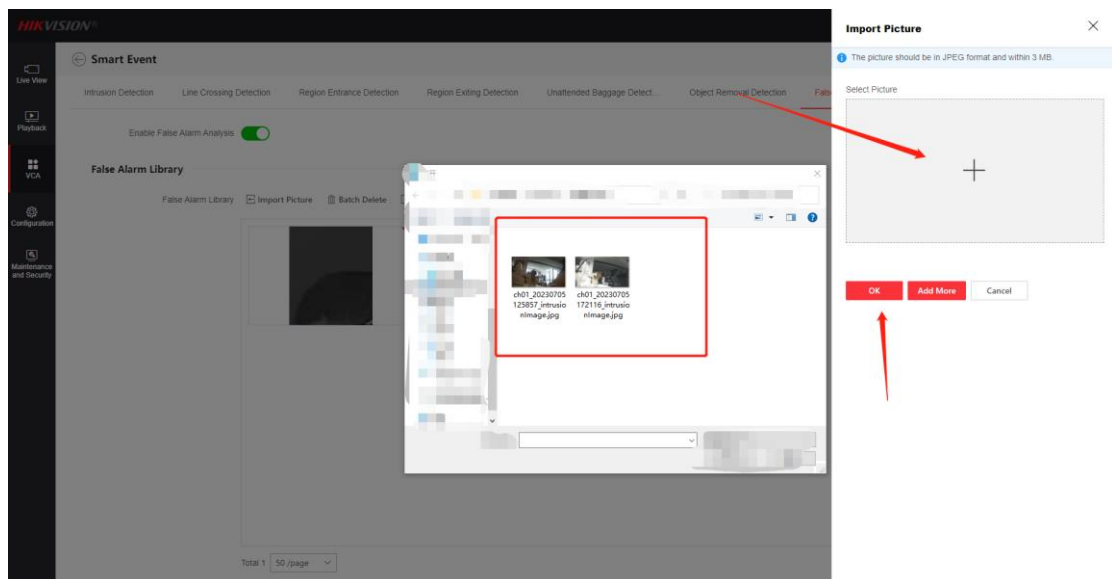


<b>Title:</b>	<b>How to configure false alarm analysis of 3 series semi self-learning camera</b>	<b>Version:</b>	v1.0	<b>Date:</b>	2023/07/06
<b>Product:</b>	IPC			<b>Page:</b>	5 of 6

Select False Alarm Library, click Import Picture



Import false alarm picture



<b>Title:</b>	<b>How to configure false alarm analysis of 3 series semi self-learning camera</b>	<b>Version:</b>	v1.0	<b>Date:</b>	2023/07/06
<b>Product:</b>	IPC			<b>Page:</b>	6 of 6

### 3、 Enable False Alarm Analysis

Select the false alarm pictures and enable False Alarm Analysis

