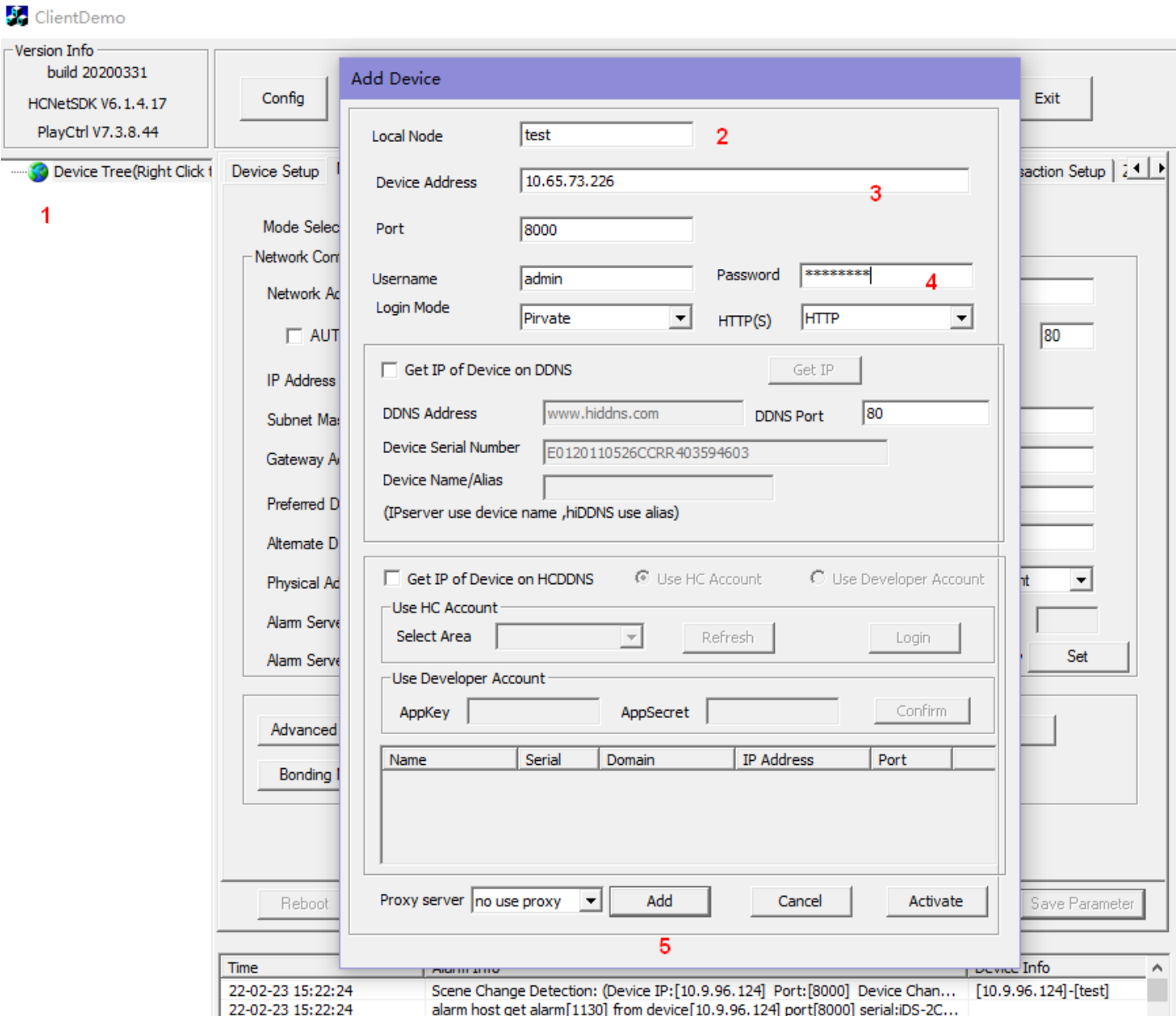


1. Add camera to SDKDemo

Double-click the symbol . Right click Device Tree symbol

Enter Node name, Device IP, port, username and password to add device



2 Enable POS information

Click the Product Related- IPC/IPD CFG- POS info Overlap to enable device POS information:

ClientDemo

Version Info
build 20210621
HCNetSDK V6.1.7.30
PlayCtrl V7.3.9.56

Config Preview Playback Management Others **2** Product Related Exit

Device Tree(Right Click)
test
Camera1 **1**

VCA Alarm Host DVR/NVR/DVS CVR Decode CFG **3** IPC/IPD CFG ITC CFG ACS VIS DH

Configure
CCD IPC Special IPC Special Ex CameraSetUpCfg IPC File Export

PTZ Socpe SMD
Fisheye Stream Attach Info
Vehicle Recog DIS Cfg
Correct table Eagle Calib Pic
Thermal Imaging Cfg Soft Service
storage server test security cfg file
File Upload Download FTP Log
4 POS Info Overlap

Pos Info

Pos Information Overlap

Enable **5** HatEnable GlassesEnable
 BackpackEnable HairEnable MaskEnable
 RideEnable CarryEnable PantsTypeEnable
 SexEnable SleeveEnable HeightEnable AgeEnable

SET GET **6**

Alarm
Alarm In Alarmin1 Face D

Time	State	Operation	Device Info	Error Info	Local Log	Alarm Info
22-02-23 17:28:46	FAIL	Client hard disk drive is full, unable to continue record		err[0:No er...	Clean	Save
22-02-23 17:28:46	SUCC	2022-02-23 17:28:46 HD PartitionC is Full	[10.65.73.226]-[test]			

