



How to Configure Min Moe Access Control Display on
GUI Live View of NVR

Title:	How to Configure Min Moe Access Control Display on GUI Live View of NVR	Version:	v1.0	Date:	2021/12/21
Product:	NVR			Page:	1 of 5

Function Introduction

From V4.60.000 build211129, I series NVR start supporting Min Moe event display in GUI live view interface (Event information will be shown in Target list and can display as a pop-up window).

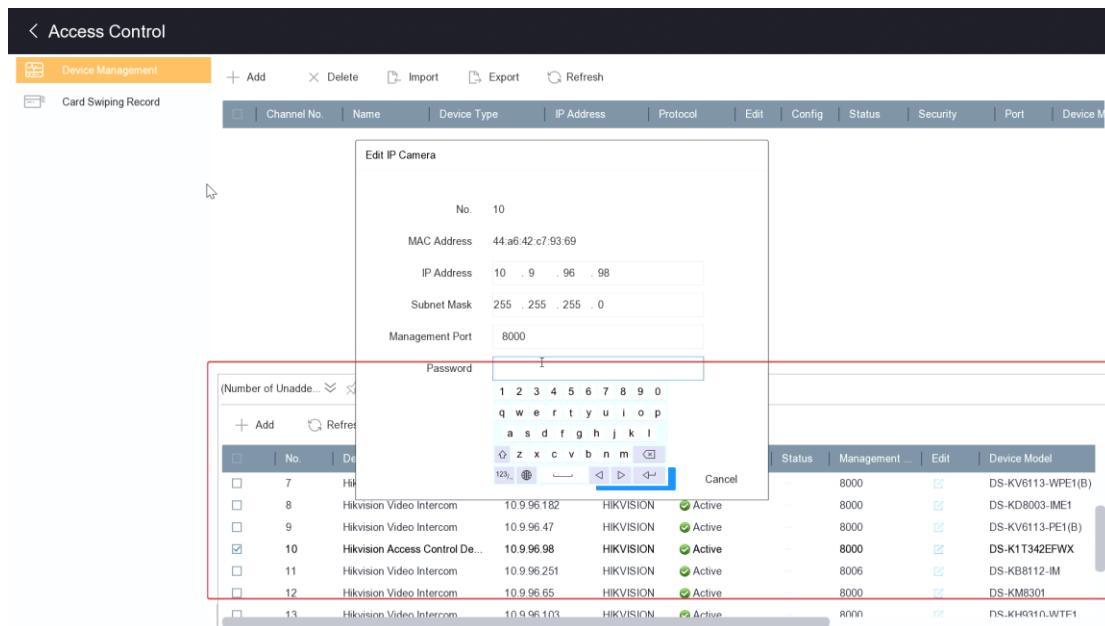
Limitation

Min Moe authentication event does not contain information of face location.

Configuration

1) Add Min Moe device

In local GUI of NVR, click **Business Application—Access control** to enter device management interface. At this point, you can click Add and manually enter the IP address to add Min Moe device. You can also pull up the list as shown in the following picture to search for devices that are online in the same network segment.



Notice:

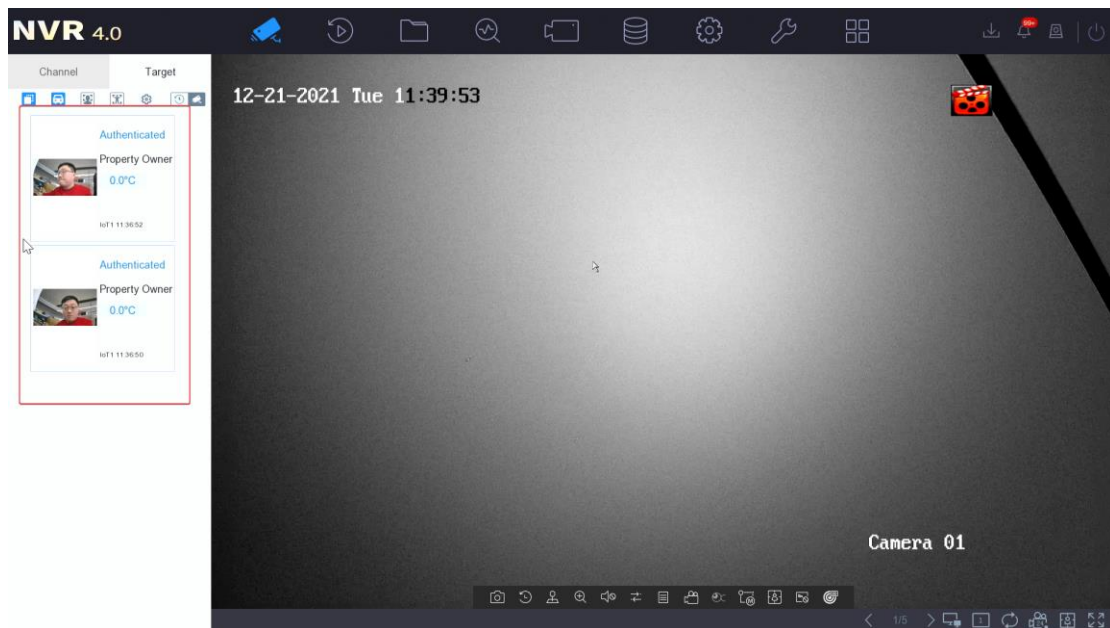
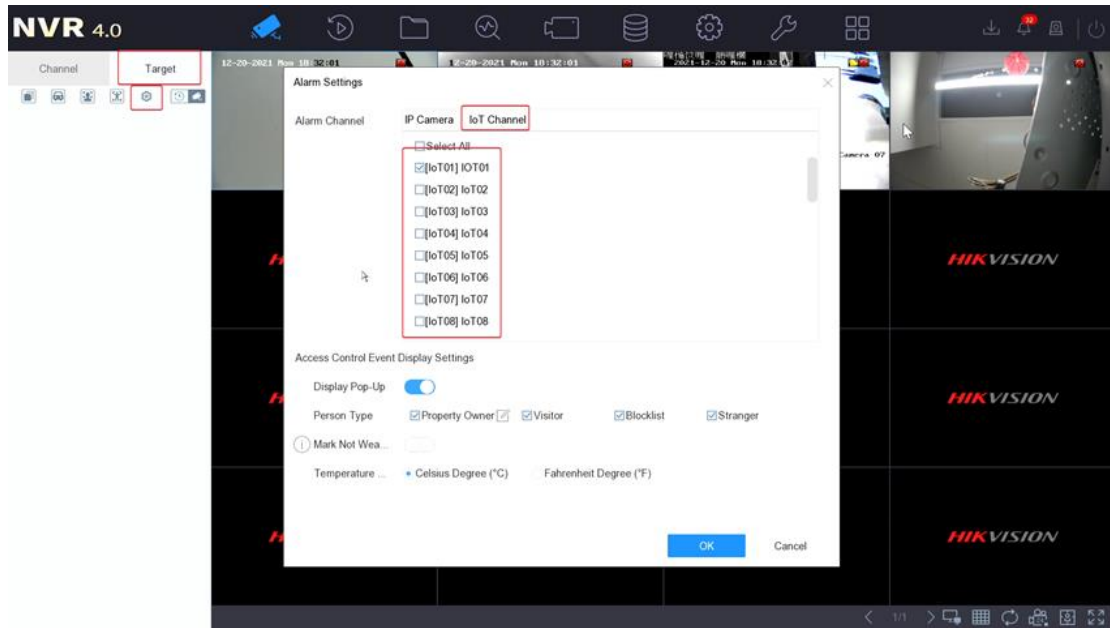
Besides IoT channel, Min Moe device should be also added to IP channel, or event display function will not take effect.

2) Configure Alarm Settings

1. Enter live view interface, select **Target**, click the **Gear** icon, select **IoT Channel**, and then tick the IoT Channel that you want to show the event information. After that, event information triggered by the Min Moe device will display in the **Target** list in

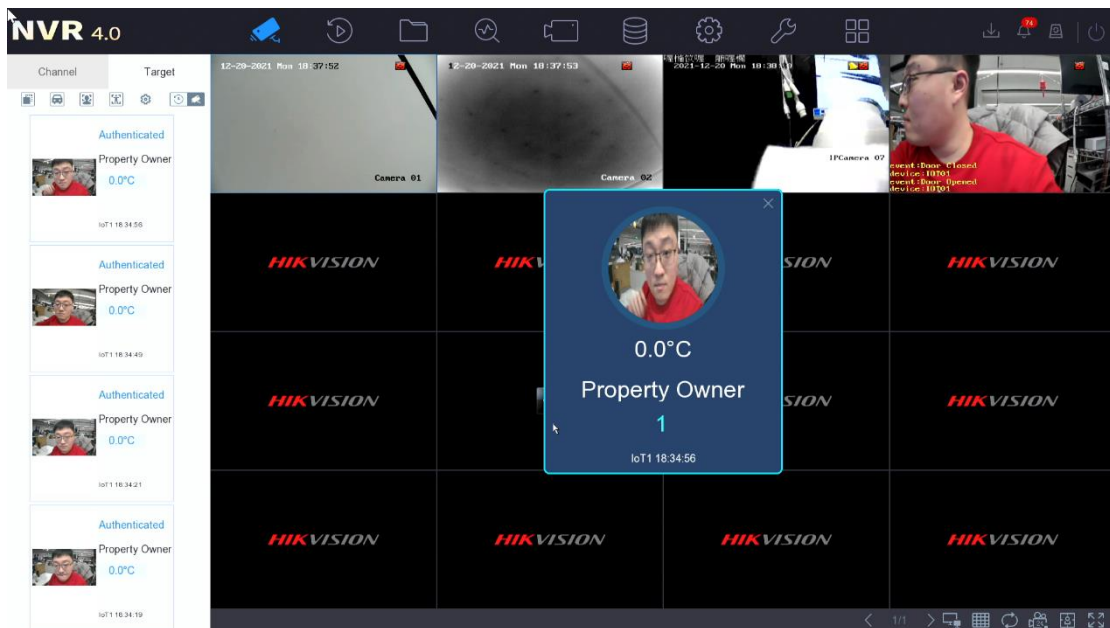
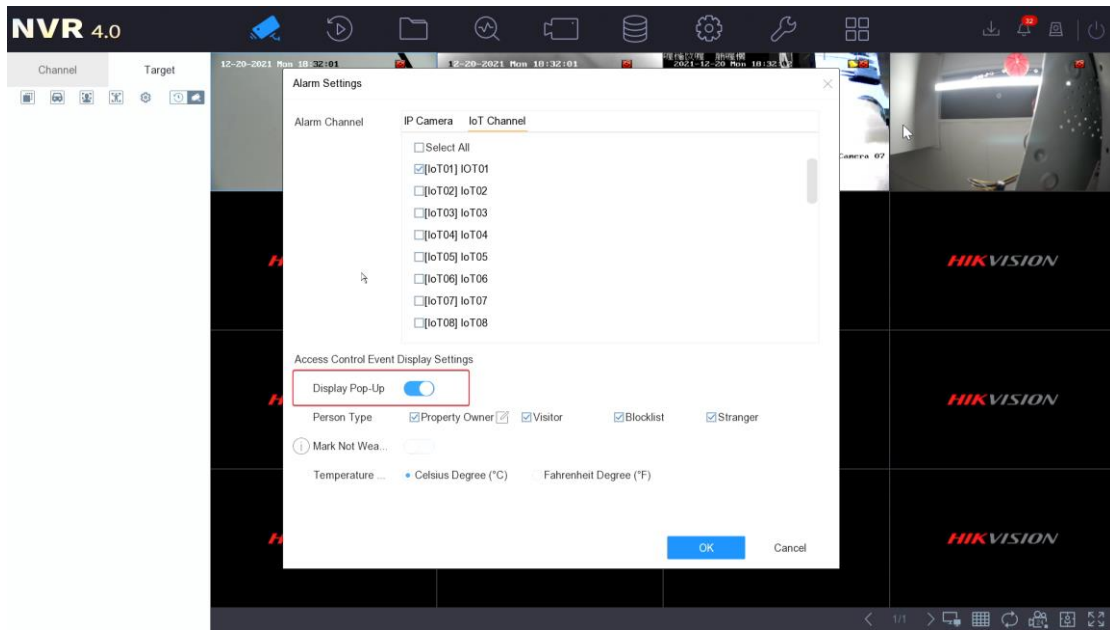
Title:	How to Configure Min Moe Access Control Display on GUI Live View of NVR	Version:	v1.0	Date:	2021/12/21
Product:	NVR			Page:	2 of 5

real time.



2. If enable **Display Pop-Up**, there will be a pop-up window display in live view interface once there is any Min Moe event being triggered.

Title:	How to Configure Min Moe Access Control Display on GUI Live View of NVR	Version:	v1.0	Date:	2021/12/21
Product:	NVR			Page:	3 of 5



- You can configure person type that need display at Alarm Settings interface. In addition, you can enable **Mark Not Wearing Mask Event** to make events that include people who do not wear a mask pop up with a more striking background color. Moreover, users can change the unit of temperature display.

Title:	How to Configure Min Moe Access Control Display on GUI Live View of NVR	Version:	v1.0	Date:	2021/12/21
Product:	NVR			Page:	4 of 5

