



How to use network microphone with NVR

Title:	How to use network microphone with NVR	Version:	v1.0	Date:	2023/3/7
Product:	NVR			Page:	1 of 5

How to use network microphone with NVR

Description

From version 4.62, NVR supports add with network microphone for audio pickup. The audio can be individually previewed or played back. Also, it can bind video channels to integrate audio into video streams.

Preparation

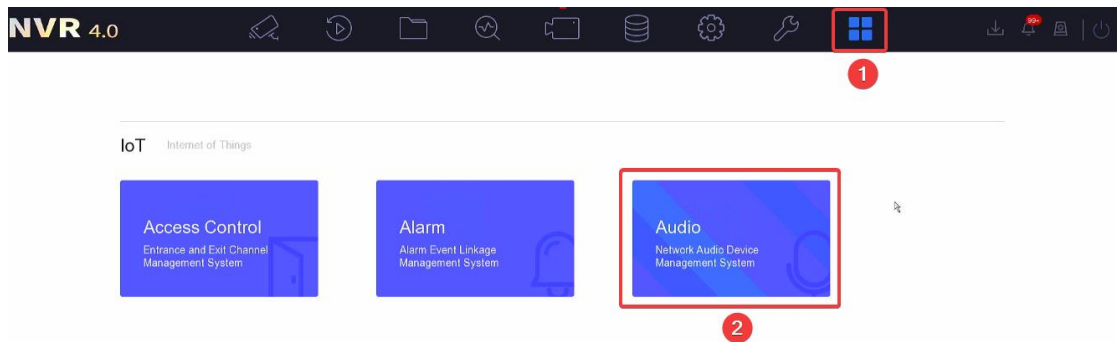
M Series, Acusense or DeepinMind device, version must be 4.62 or above. In this article, M series with FW version 4.63 is taken as an example, and the function is updated and optimized compared with 4.62.

IP network platform, model is DS-UAC-M1P.

Operate on local GUI

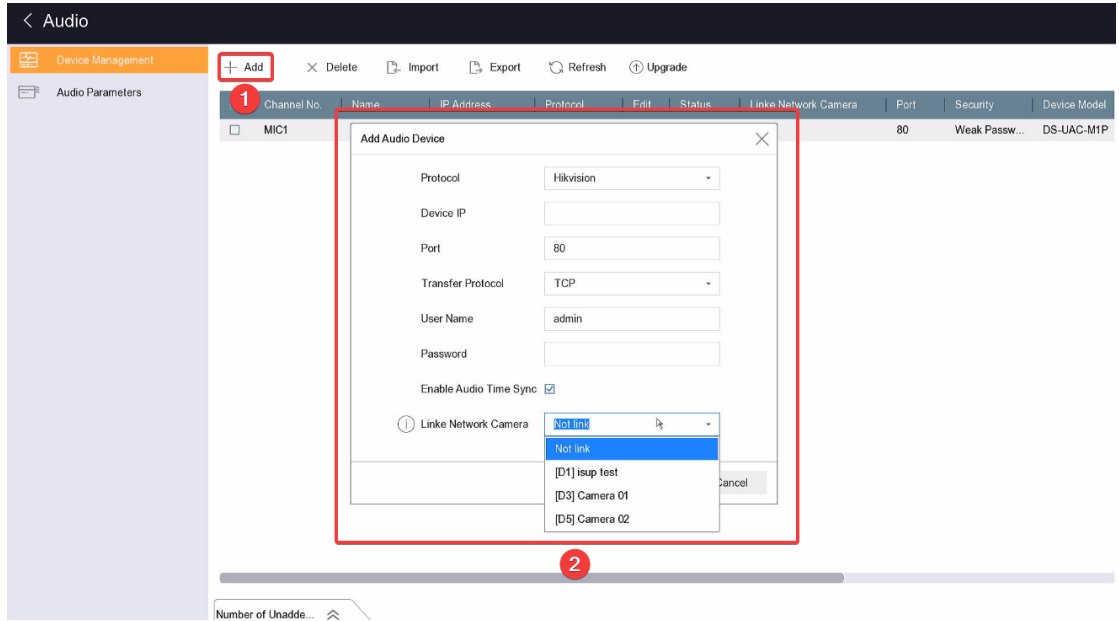
1. Add Device

Log in to the local GUI of NVR and select **Business Application-Audio** to go to the audio device management interface.

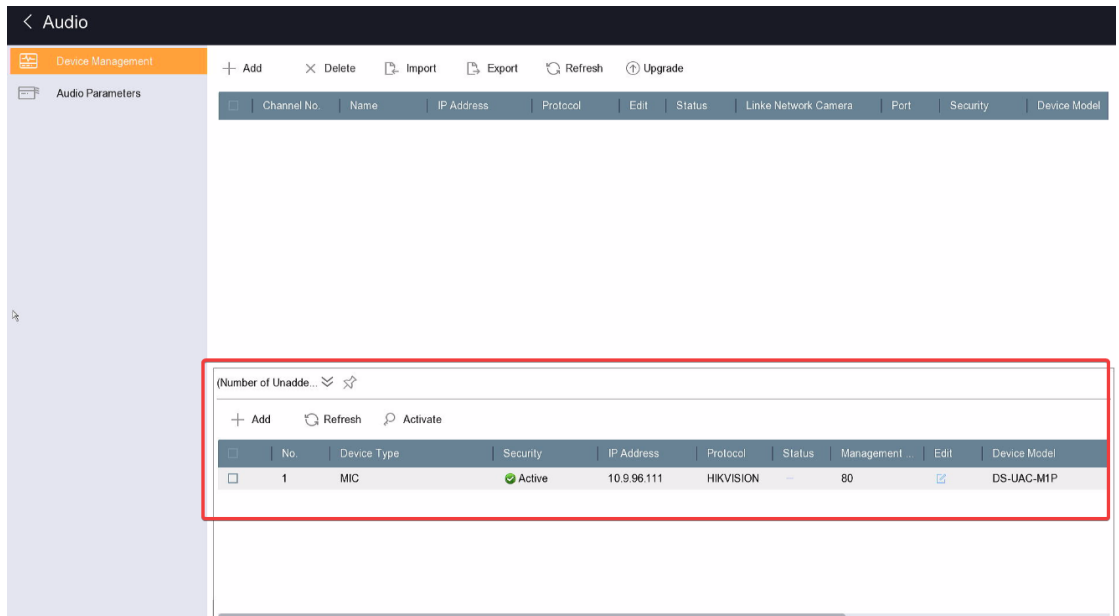


Manual Add: Click Add and enter related parameters of network microphone to manually add the device.

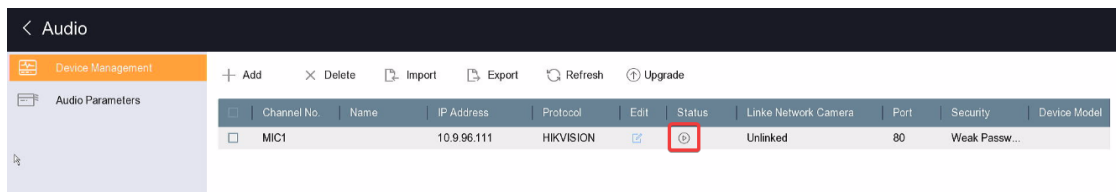
At this time, you can bind a video channel with microphone, and the audio of the bound channel will be replaced by the input audio of network microphone.



Quick Add: Pull up the unadded device menu to quickly activate/add network microphone through SADP (default channel password should be same as network microphone's password).



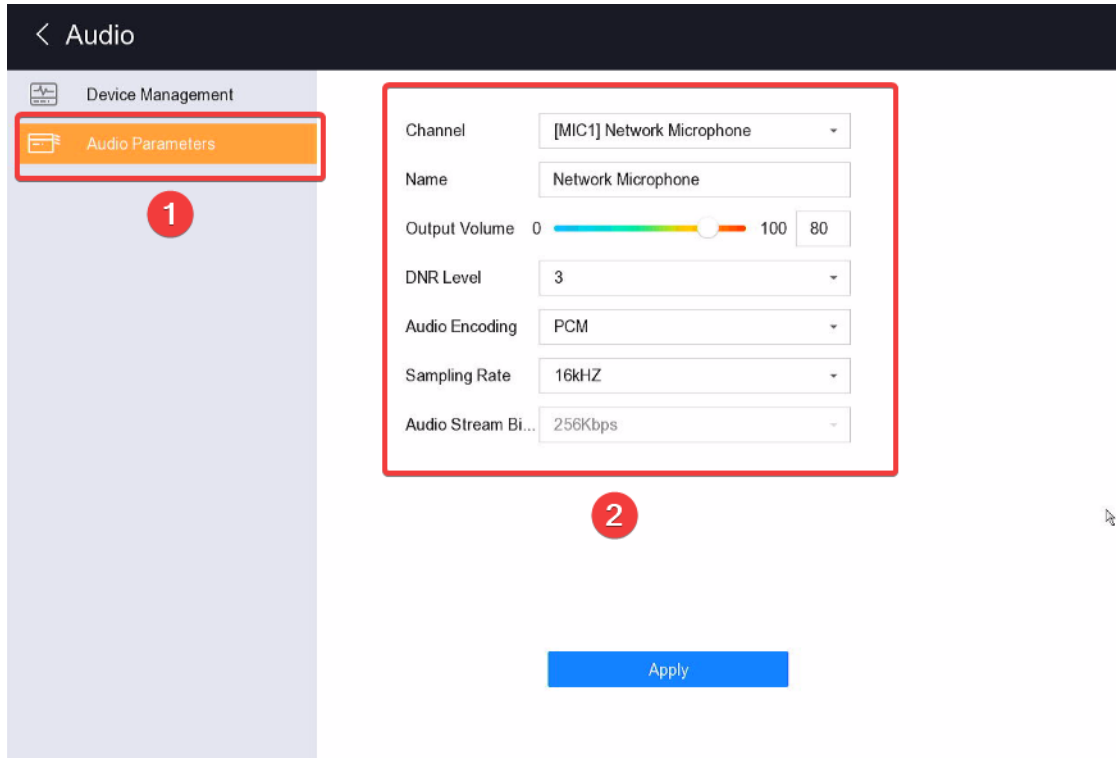
After adding, user can click the play button under Status to play the audio collected by the microphone currently.



2. Audio Configuration

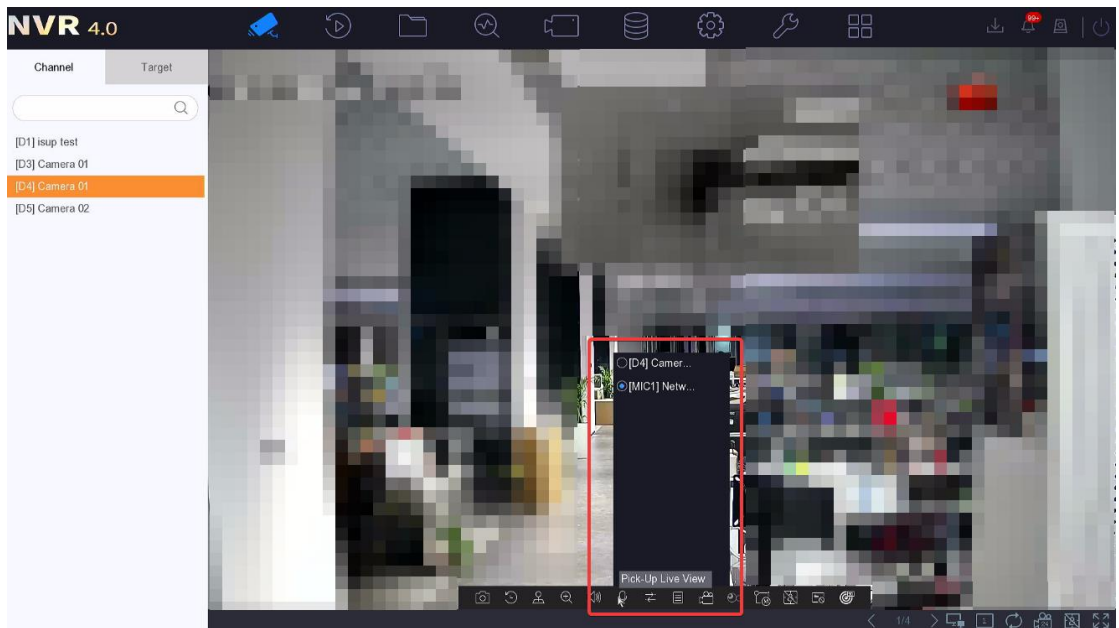
Click Audio Parameters to configure audio parameters of network microphone.

Title:	How to use network microphone with NVR	Version:	v1.0	Date:	2023/3/7
Product:	NVR			Page:	3 of 5



3. Audio Live View

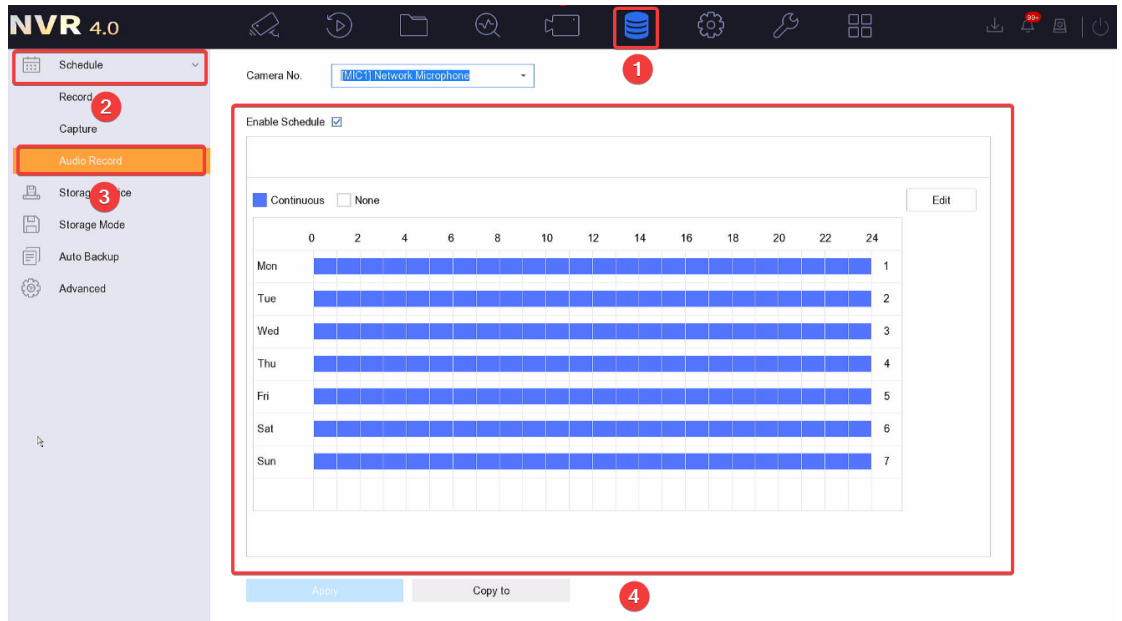
Enter live view interface of NVR local GUI. When live view a camera channel, users can click Pick-Up Live View in the function bar below the video and select the audio currently played as camera audio or network microphone audio (If a microphone is bound to the camera channel, even if the audio is selected as camera audio, playing audio is actually network microphone's audio).



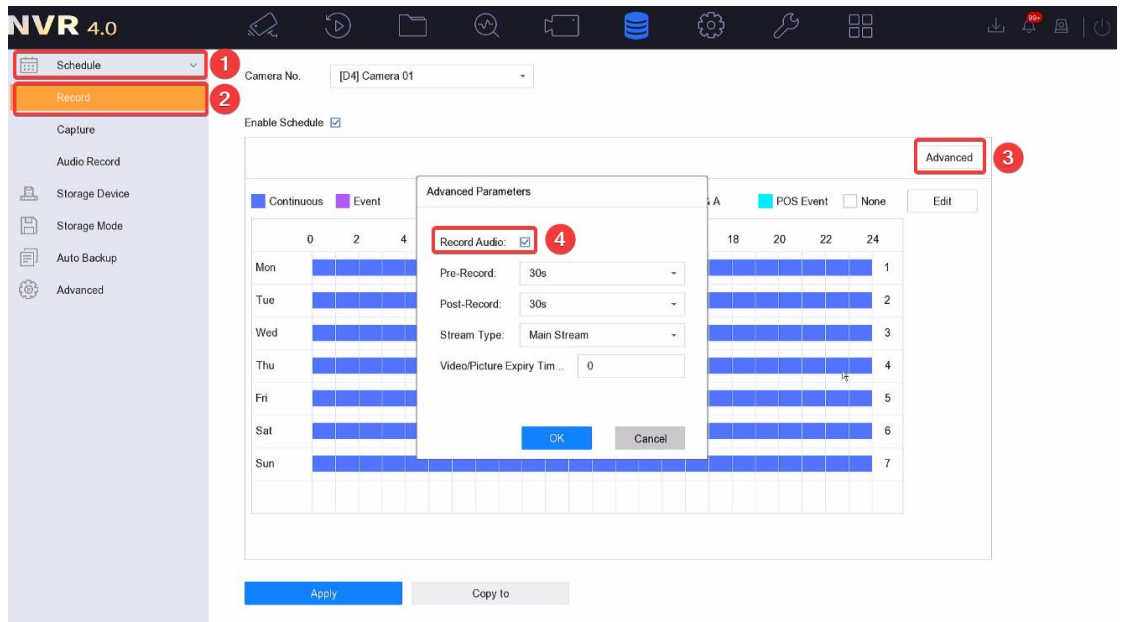
4. Audio Playback

1) Access the local storage configuration interface, click **Schedule-Audio Record** one by one to enter

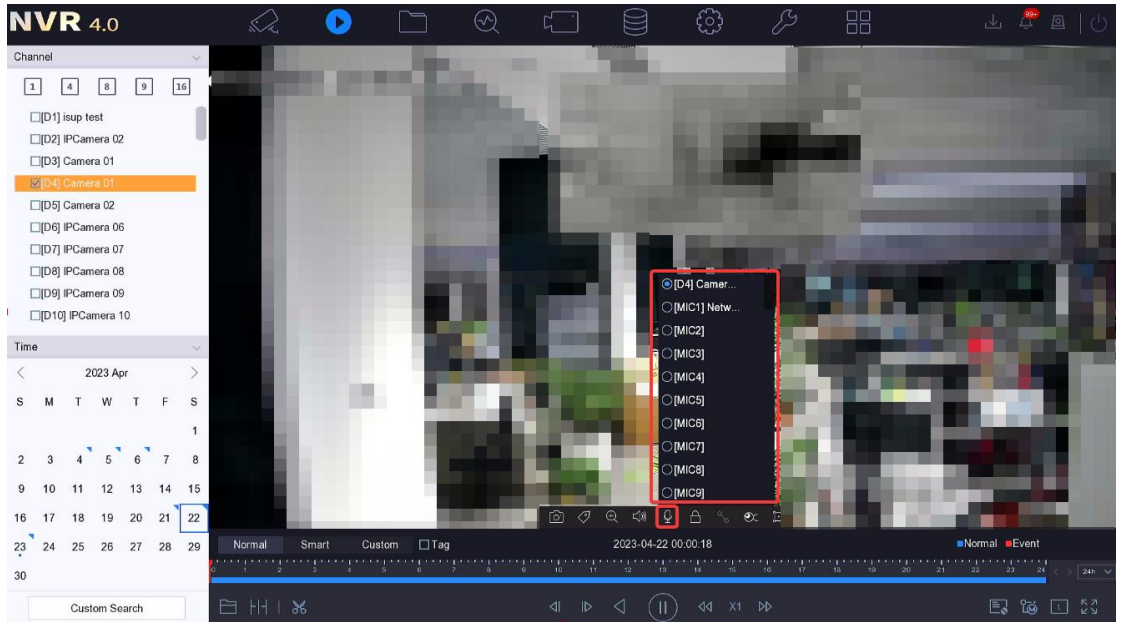
the audio recording schedule configuration interface, and configure the audio recording schedule as requirement of users.



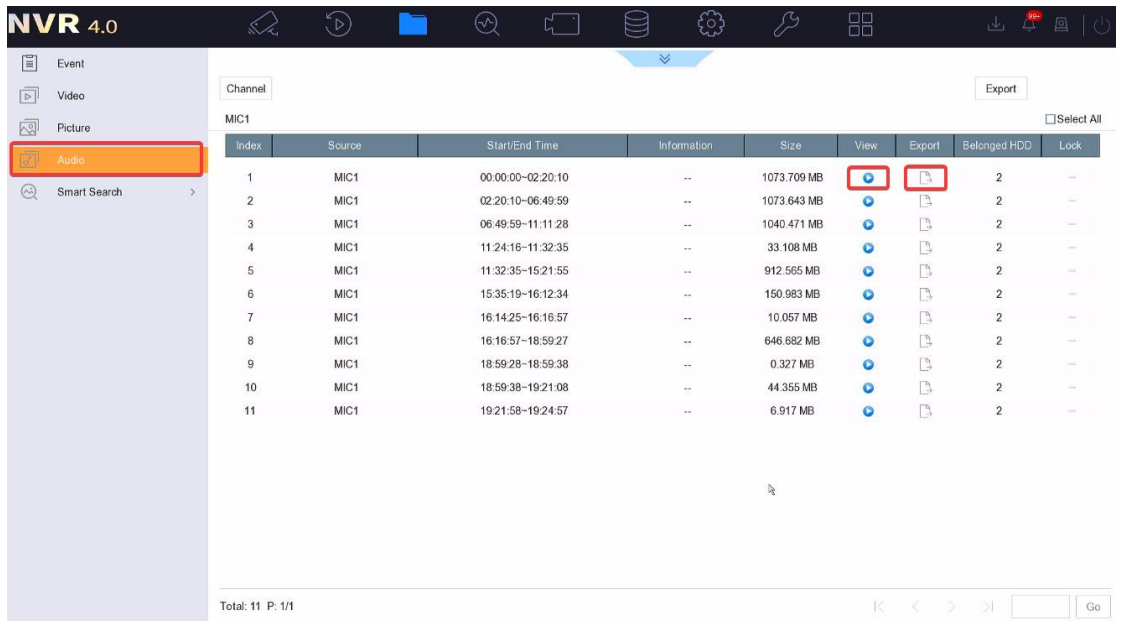
- 2) If the network microphone is bound to camera channel before, user click **Schedule-Record-Advanced** in turn to enable Record Audio, so that the audio stream collected by the network microphone can be mixed with the video stream of the binding channel.



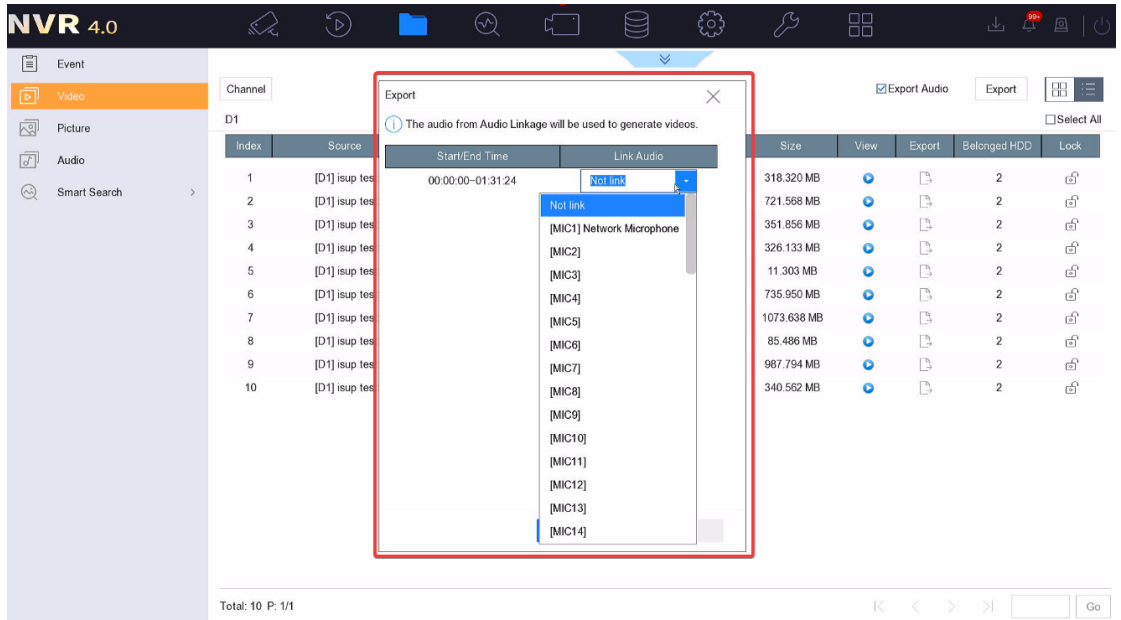
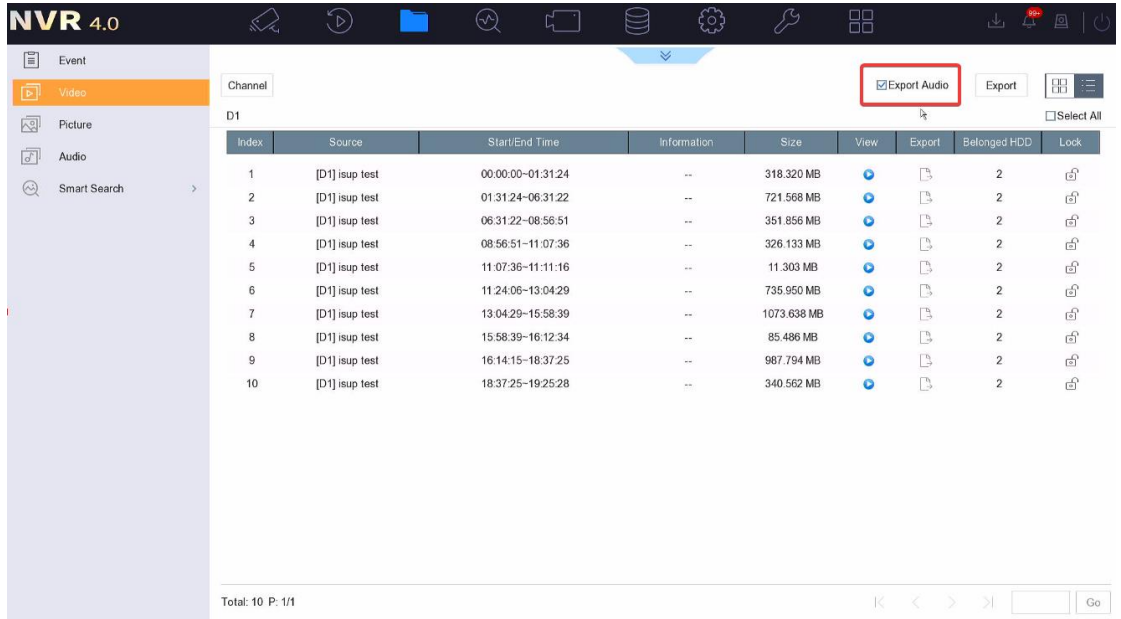
- 3) Enter the local playback interface. When playing back a camera channel, users can click Pick-Up Playback in the function bar below the video and select the current playback audio as camera audio or network microphone audio (if a network microphone is bound to the camera channel before, the playback audio is actually network microphone audio even if the audio is selected as camera audio).



- 4) Enter the local file management interface, click Audio and input the search conditions for audio retrieval. The retrieved audio can be played directly or exported for backup (exported audio files need to be played using Vsplayer).



- 5) Export Audio can be enabled when selecting to retrieve video files and export them. At this time, users can temporarily select a link audio channel, and the exported video will be mixed with the audio stream of corresponding network microphone.

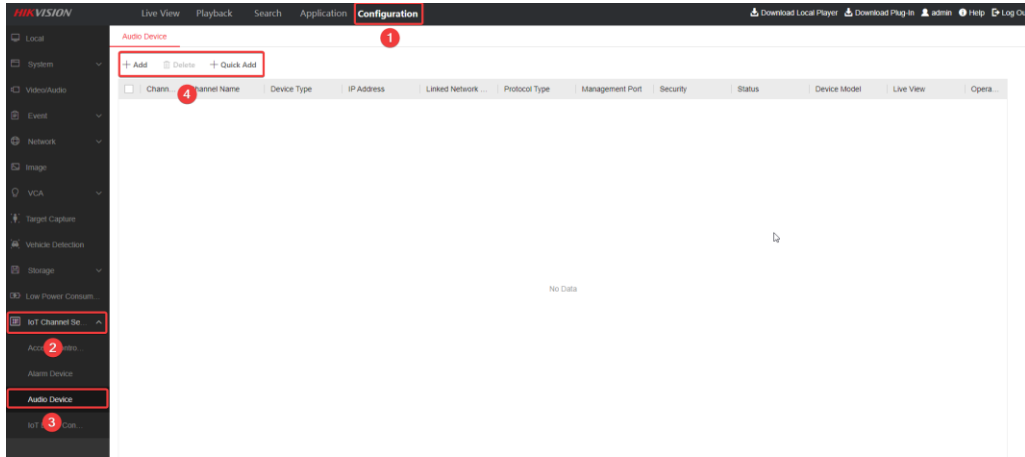


Operate on web

1. Add Device

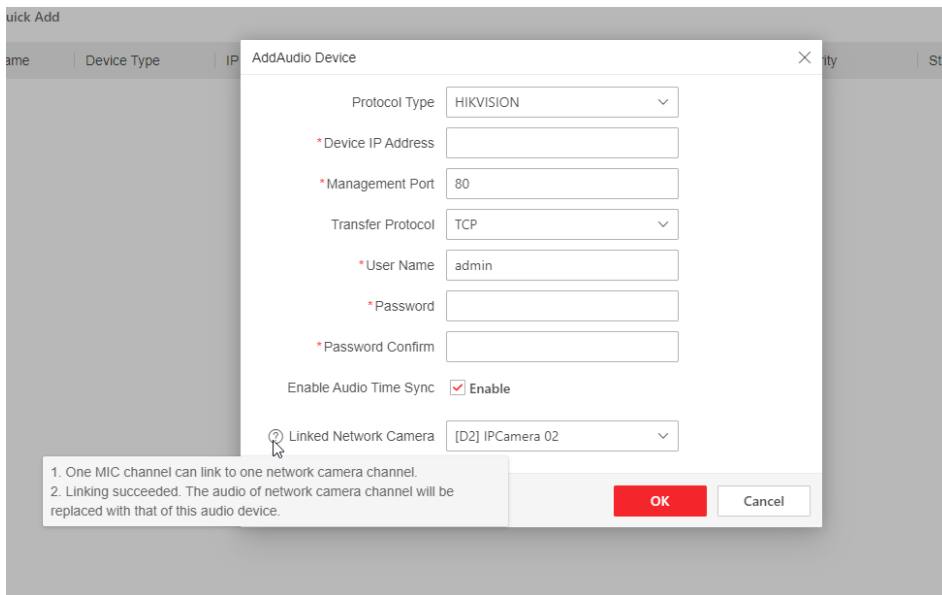
Log in to NVR web page and click **Configuration-IoT Channel Settings-Audio Device** one by one to enter the network microphone page. Users can click Add to add microphone manually, or click Quick Add to add it via SADP quickly (4.63 Support).

Title:	How to use network microphone with NVR	Version:	v1.0	Date:	2023/3/7
Product:	NVR			Page:	7 of 5

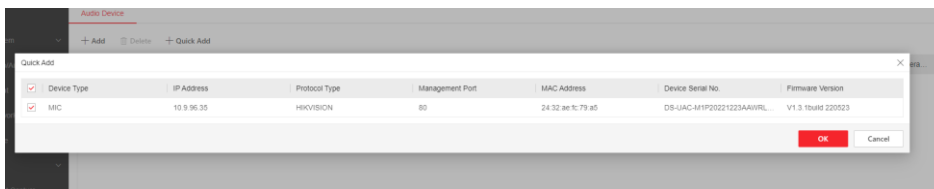


Manual Add: Click Add and enter related parameters of network microphone to manually add the device.

At this time, you can bind a video channel with microphone, and the audio of the bound channel will be replaced by the input audio of network microphone.



Quick Add: NVR will automatically search for network microphone in the same network segment and displays their basic information. Select the device to quickly add. The verification password is the default channel password of NVR.



After adding, users can click the play button under Live View to play the audio stream currently collected by the microphone.

Title:	How to use network microphone with NVR	Version:	v1.0	Date:	2023/3/7
Product:	NVR			Page:	8 of 5

Audio Device

+ Add + Quick Add

Chann...	Channel Name	Device Type	IP Address	Linked Network ...	Protocol Type	Management Port	Security	Status	Device Model	Live View	Opera...	
<input type="checkbox"/>	MIC1	Network Micropho...	Audio Device	10.9.96.35	[D1] sup test	HIKVISION	80	Weak	Online	DS-UAC-M1P	<input type="checkbox"/>	<input type="checkbox"/>

2. Audio Configuration

Click **Configuration-Video/Audio-Audio** one by one to enter the audio configuration interface, where you can configure various parameters of the network microphone.

The screenshot shows the Hikvision NVR configuration interface. The top navigation bar includes 'Live View', 'Playback', 'Search', 'Application', and 'Configuration' (1). The sidebar menu on the left has 'Video/Audio' highlighted (2). The main configuration area is titled 'Audio' (3) and contains the following settings:

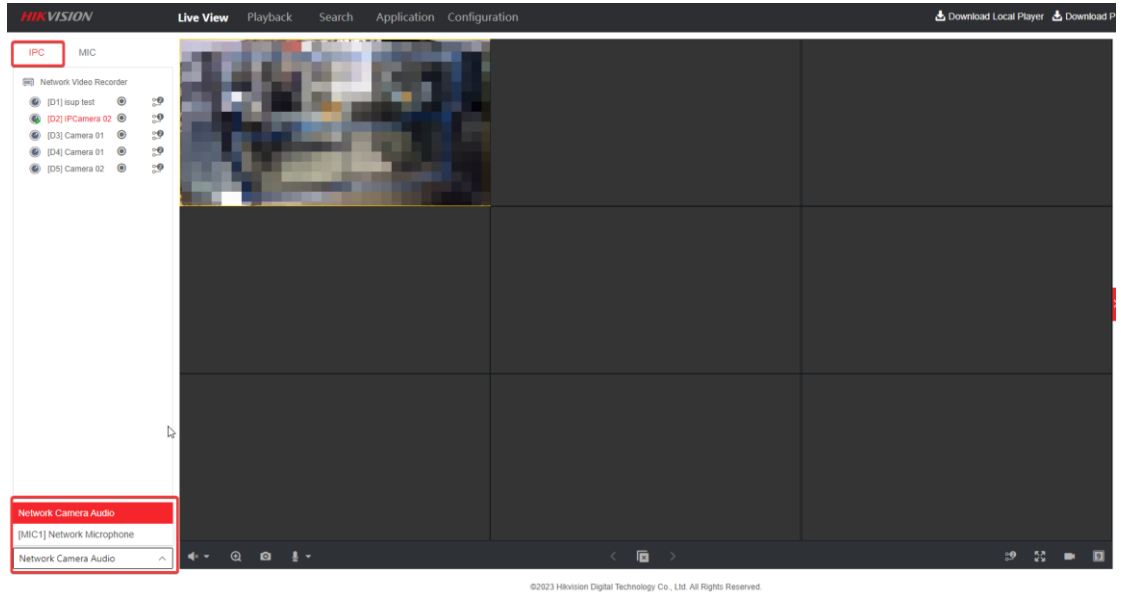
- Channel: [MIC1]Network Microphone
- Audio Encoding: PCM
- Sampling Rate: 32kHz
- Audio Stream Bitrate: 512Kbps
- Output Volume: 80
- Noise Reduction Level: 5
- Enable Status Indicator:
- Enable Echo Cancellation:

A 'Save' button is located at the bottom of the configuration area (4).

3. Audio Live View

- 1) When live view camera channel, audio can be selected as camera audio or network microphone audio (if the camera channel is bound with a microphone before, the audio playing will be from the microphone).

Title:	How to use network microphone with NVR	Version:	v1.0	Date:	2023/3/7
Product:	NVR			Page:	9 of 5



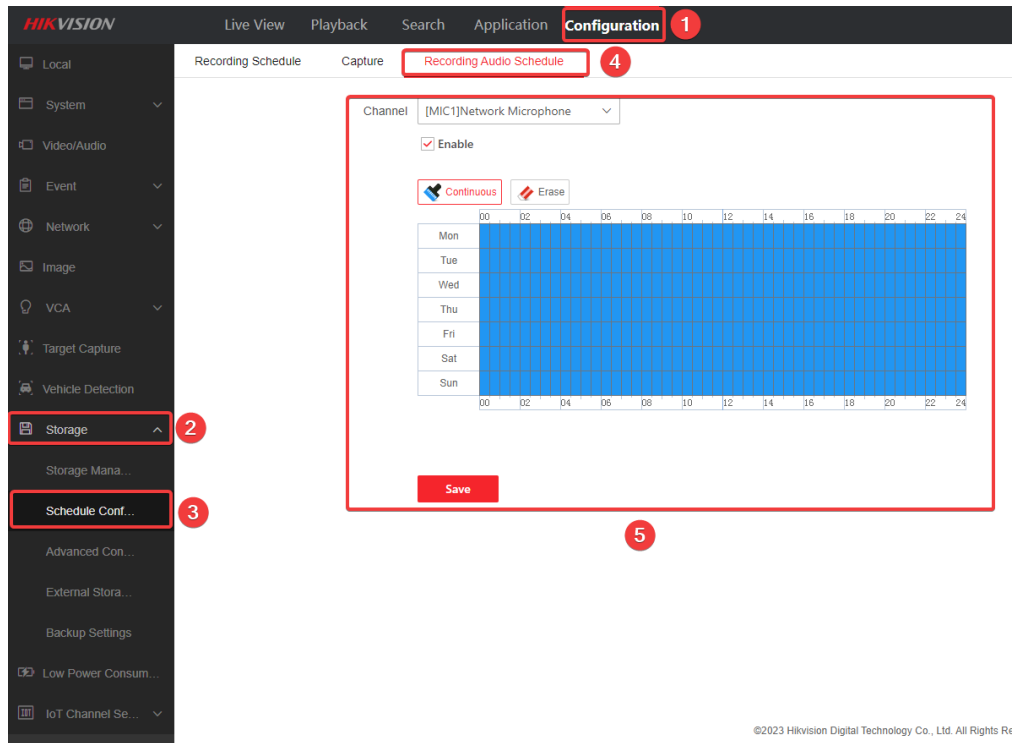
- 2) In addition, users can click MIC to listen the audio channel separately, select the corresponding channel and double-click to listen the real-time audio, or click the record button to record audio to PC in real time.



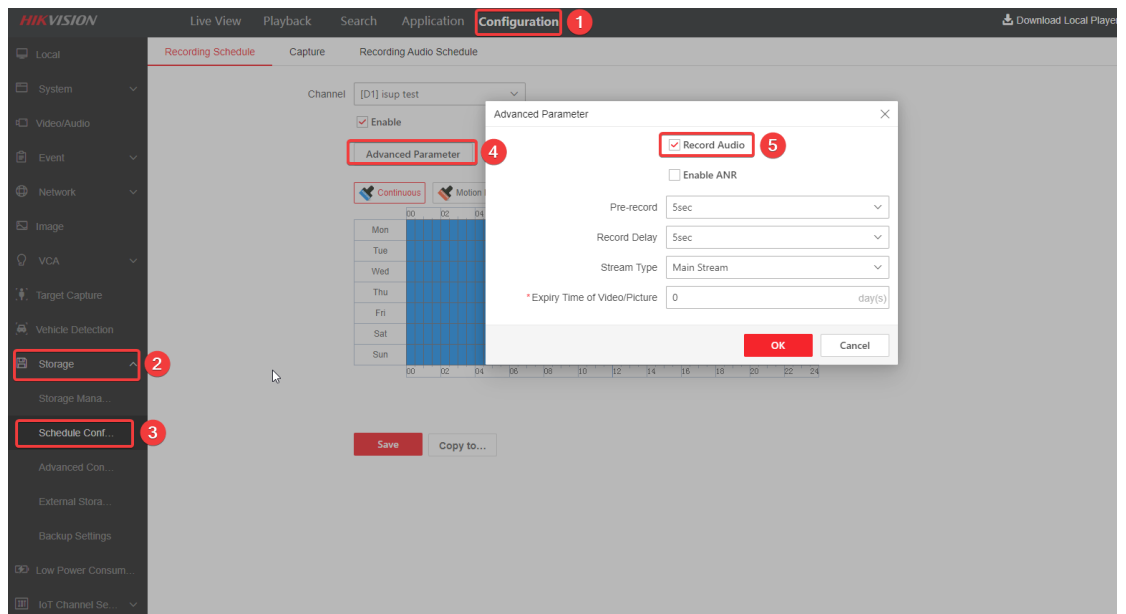
4. Audio Playback

- 1) If users need record Audio separately, click **Configuration-Storage-Schedule Configuration-Recording Audio Schedule** to enter the audio recording schedule configuration interface.

Title:	How to use network microphone with NVR	Version:	v1.0	Date:	2023/3/7
Product:	NVR			Page:	10 of 5

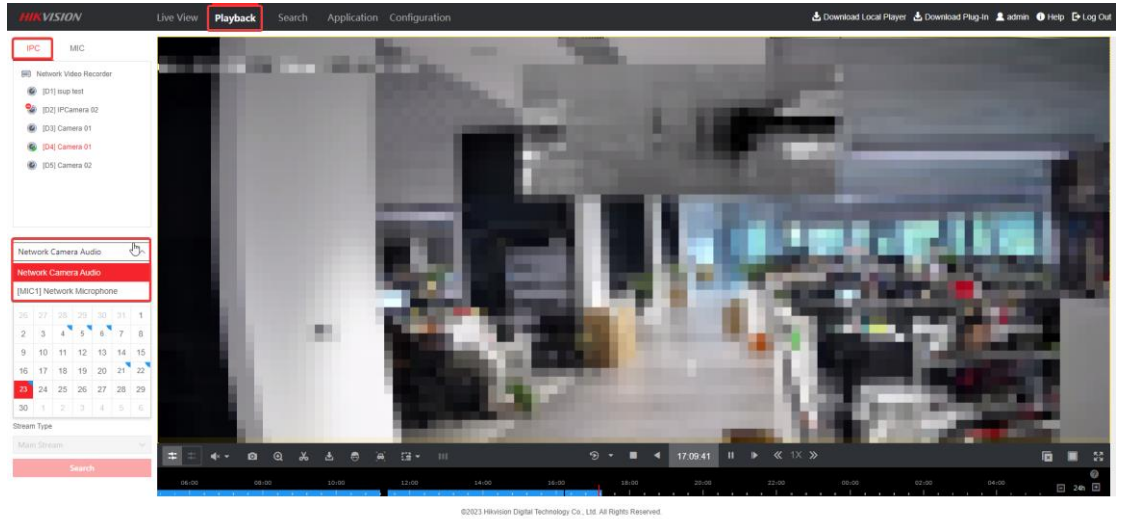


- To record audio stream with video stream, users can click Configuration-Storage-Schedule Configuration-Recording Schedule to enter the video recording schedule configuration interface, and then click Advanced Parameter to enable Record Audio.

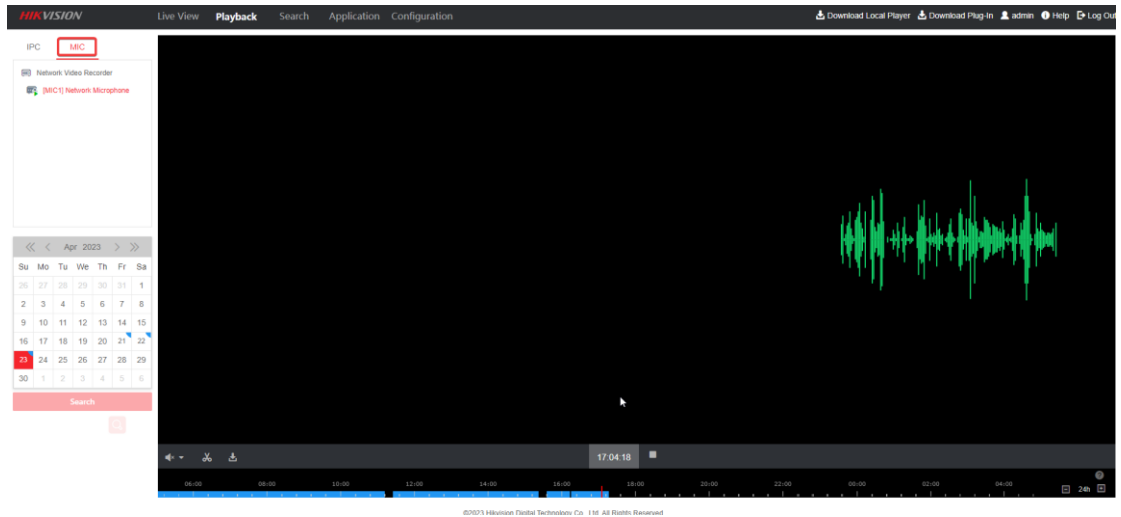


- When playing back the IPC channel, you can choose Audio playback as camera audio or network microphone audio. (If the microphone is bound to an IPC channel before, then even choose camera audio, the playing audio is actually audio collected by microphone. In addition, audio adjustment is only supported when playing back in a single split strategy).

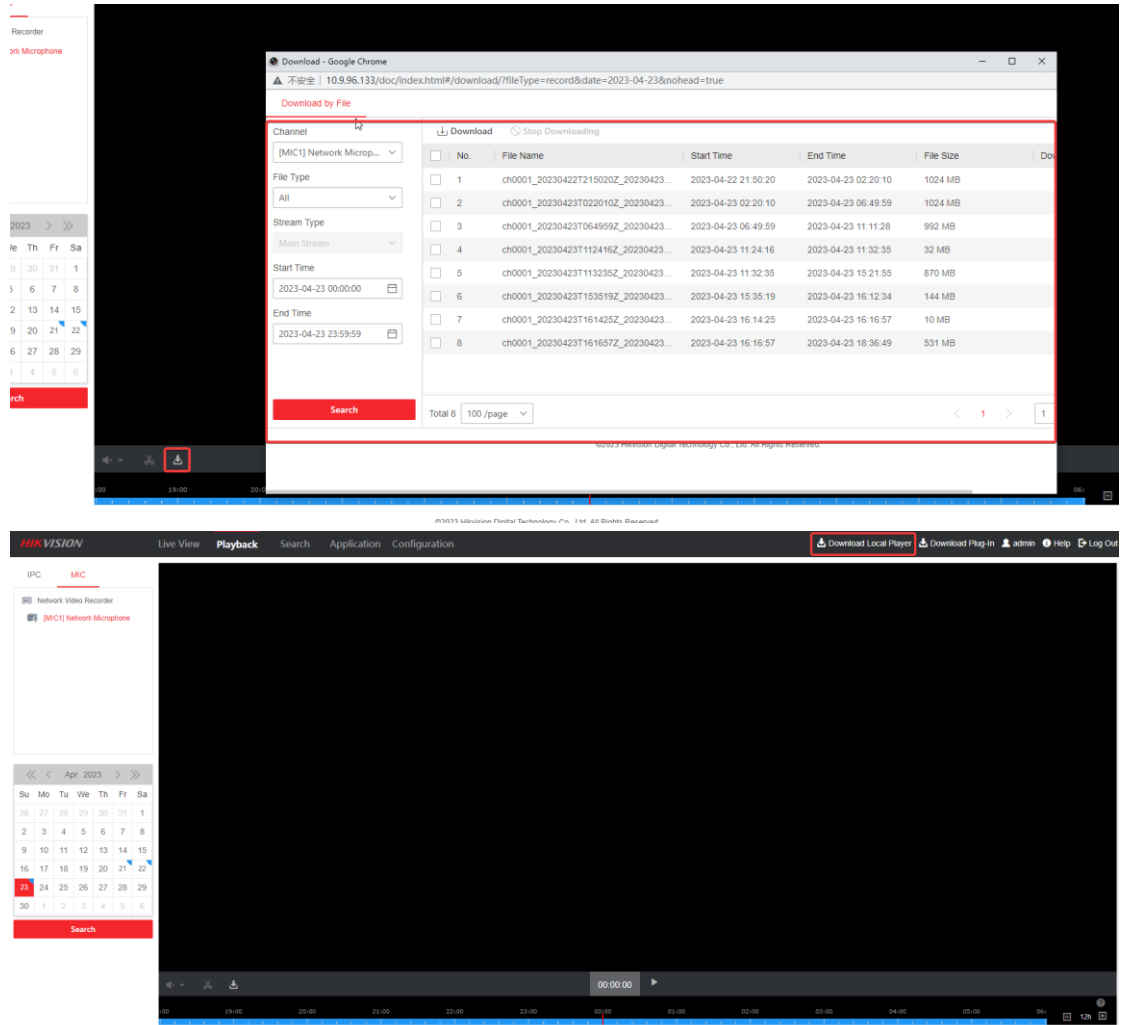
Title:	How to use network microphone with NVR	Version:	v1.0	Date:	2023/3/7
Product:	NVR			Page:	11 of 5



- 4) As shown in the NVR WEB playback interface below, users can click MIC to play back the audio channel separately.



- 5) User can click Download on the playback interface to download audio and video recording files. When selecting audio download, the downloaded audio file can be played using a special player. The player can be downloaded by clicking Download Local Player on the upper right corner of the web page.



When selecting a video download, the user can temporarily associate an audio channel and mix the audio of the corresponding time with the video stream for downloading.

