



## **How to connect PSTN to Hybrid Control Panel**

<b>Title:</b>	DS-PHA How to connect PSTN to Hybrid Control Panel	<b>Version:</b>	v1.0	<b>Date:</b>	09/17/2020
<b>Product:</b>	DS-PHA Series Hybrid Security Control Panel			<b>Page:</b>	1 of 4

## Preparation

---

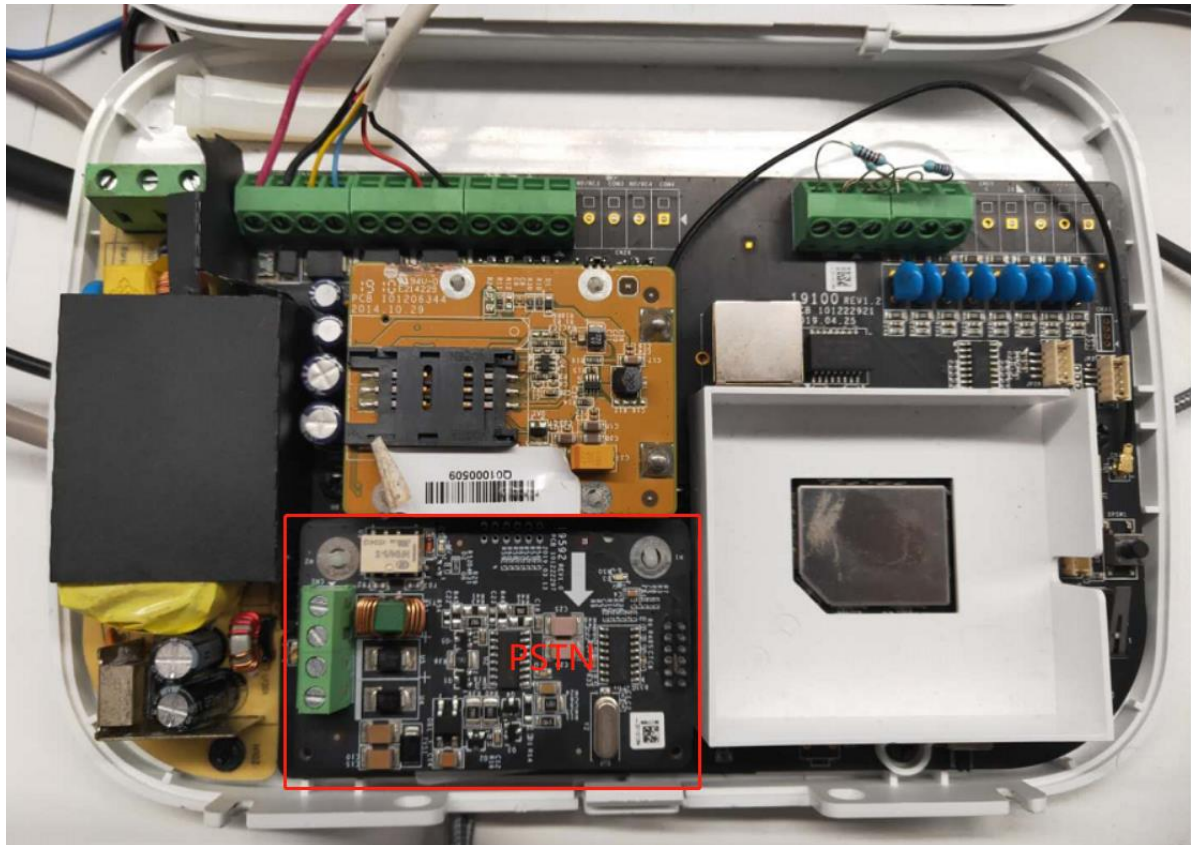
1. DS-PHA Series Hybrid Security Control Panel V1.2.0
2. PSTN module DS-PMA-P and Third-party Alarm receiver

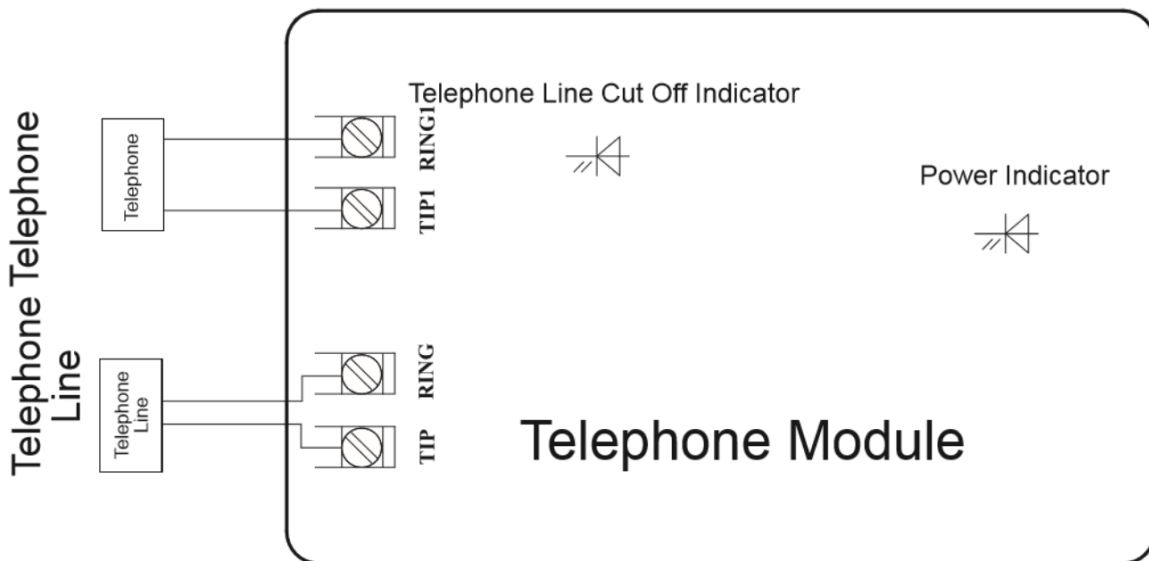
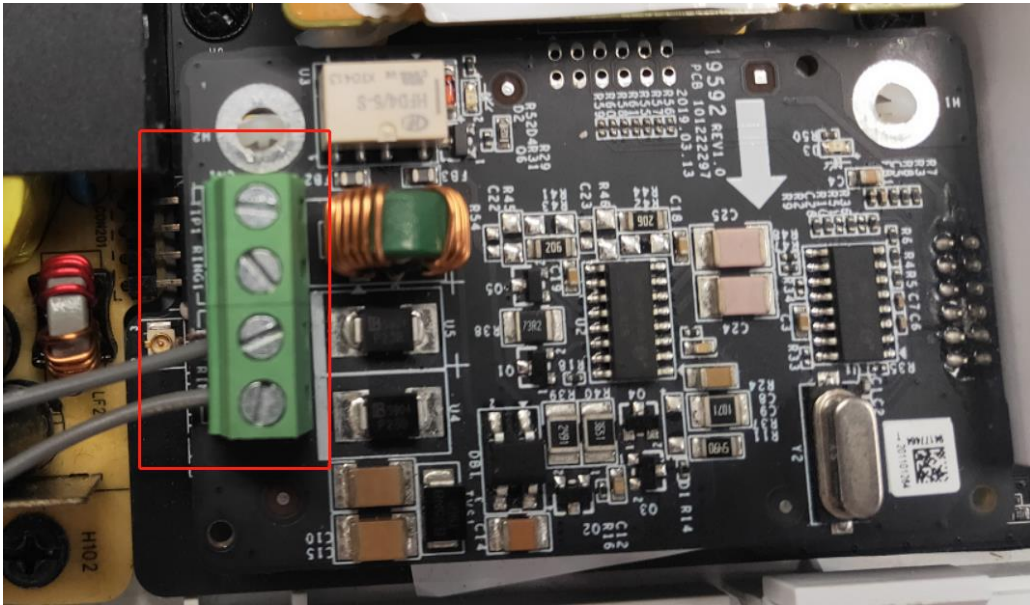
### How to connect PSTN to Hybrid Control Panel

---

Telephone report means panel can upload report by PSTN, panel can dial to **Alarm Machine Device**, after dial success, panel and alarm machine will communicate by Specific communication protocols(CID).

#### 1. Find the port for PSTN Module





## 2. PSTN Configuration

- 1) Check PSTN module connect to the telephone cable successfully (TIP and RING) .
- 2) Select **Communication Parameters---Alarm Receiving Center**, enable **channel 1** and select communication Type to PSTN. Add **Center Name**, **Center Number and Receiver Account**, then click save.

**HIKVISION**

User Management  
System  
Device Management  
Partition Management  
Control Device  
Communication Parameters  
Ethernet  
Wi-Fi  
Cellular Data Network

**Alarm Receiving Center**

Event Communications  
Hik-Connect Registration  
Video Verification Events  
ISUP Registration  
NAT  
FTP  
Video & Audio  
Maintenance  
Status

**Alarm Receiving Center** 1

Enable

**Channel1**

Enable

Communication Type PSTN

Protocol Type PSTN-CID

Uploading Period 24  hour

Upload the First Test R... 30  Minute(s)

Center Name ARC

Center Number 21345

Dialing Times 3

Communication Protocol CID

Transmission Mode DTMF 5/S

Receiver Account 1234

**Channel2**

Enable

**Channel3**

Enable

Save

**Uploading Period:** Means after the first test report is uploaded, how long is the interval to upload the next test report;

**Uploading the First Report Time:** After the test report upload is enabled, how long is the interval to upload the first test report;

**Center Name:** User-defined alarm center name with a maximum length of 32;

**Center Number:** Telephone number of the Center Alarm receiver;

**Dialing Times:** The number of times the Panel tries to call to the alarm center (support 1~15 times);

**Communication Protocol:** The protocol used to upload the alarm information. Support CID communication protocol;

**Transmission Mode:** Alarm signal transmission mode DTMF5/S (slow dialing) and DTMF10/S (fast dialing);

**Receiver Account:** Certification account number to contract to Alarm Receiver (4 bits.)



**Note**

1. Most of time, only need set **Center Number and Receiver Account**, other parameters remain default



See Far, Go Further