

| | | | | | |
|-----------------|---|-----------------|------|--------------|------------|
| Title: | DS-PHA How to Add Hybrid Control Panel to iVMS 4200 | Version: | v1.0 | Date: | 06/01/2020 |
| Product: | DS-PHA Series Hybrid Security Control Panel | | | Page: | 1 of 3 |

Preparation

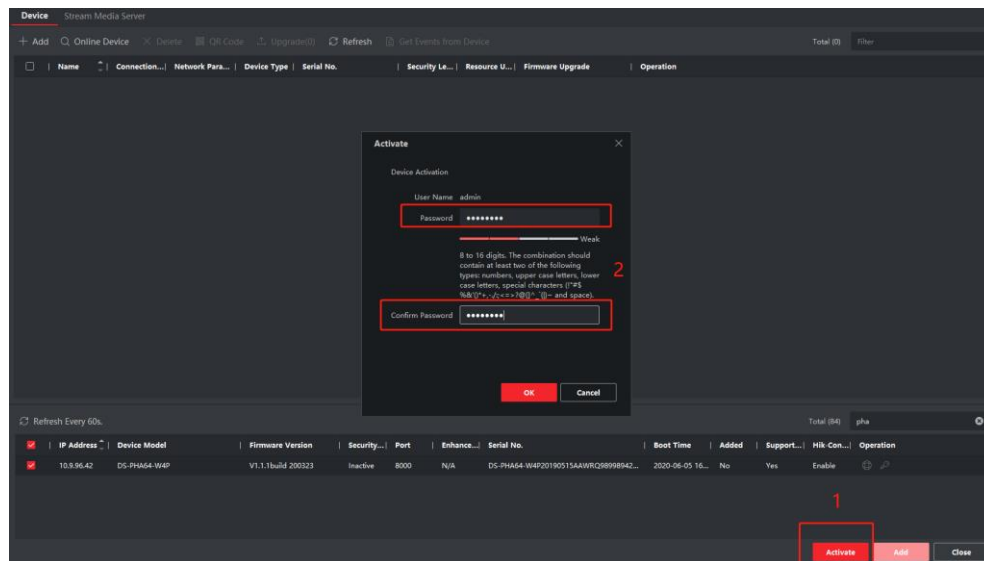
1. DS-PHA Series Hybrid Security Control Panel
2. iVMS-4200 (3.2.1.6)

How to Add Hybrid Control Panel to iVMS 4200

You can login the iVMS-4200 Client Software to configure the device's parameters. You can also configure the security control panel's network parameters, alarm, permission, system, log search via the web client.

1. Activate the device

- 1) You should activate the device the first time you access it to the network for safety reasons.

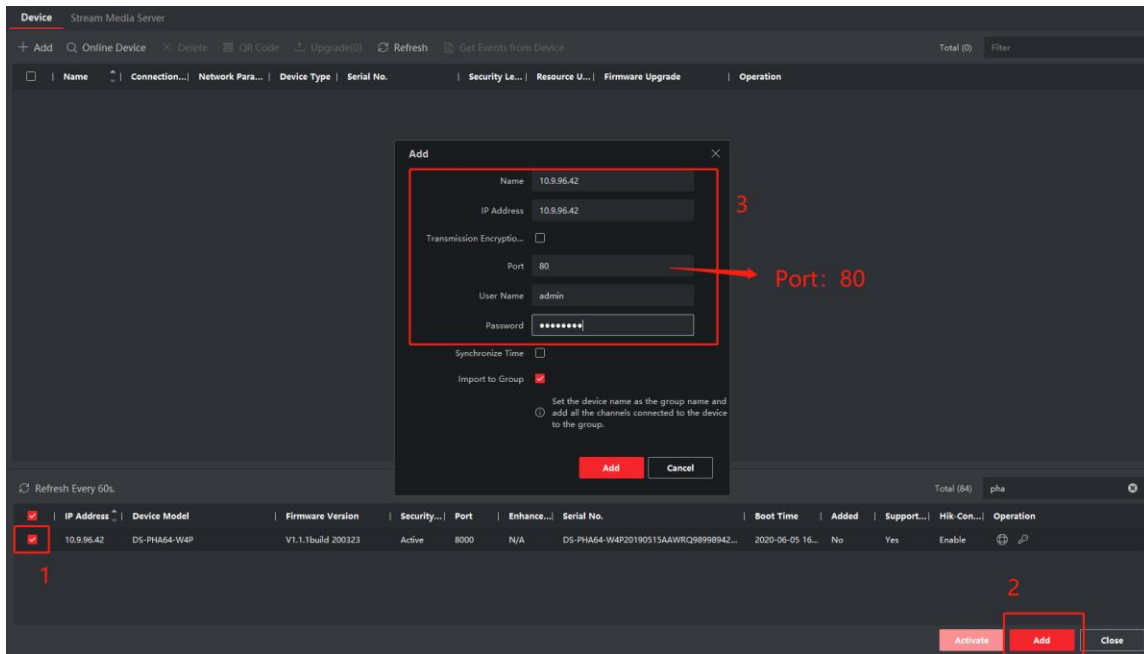


- 2) Click OK.

2. Add device to iVMS-4200

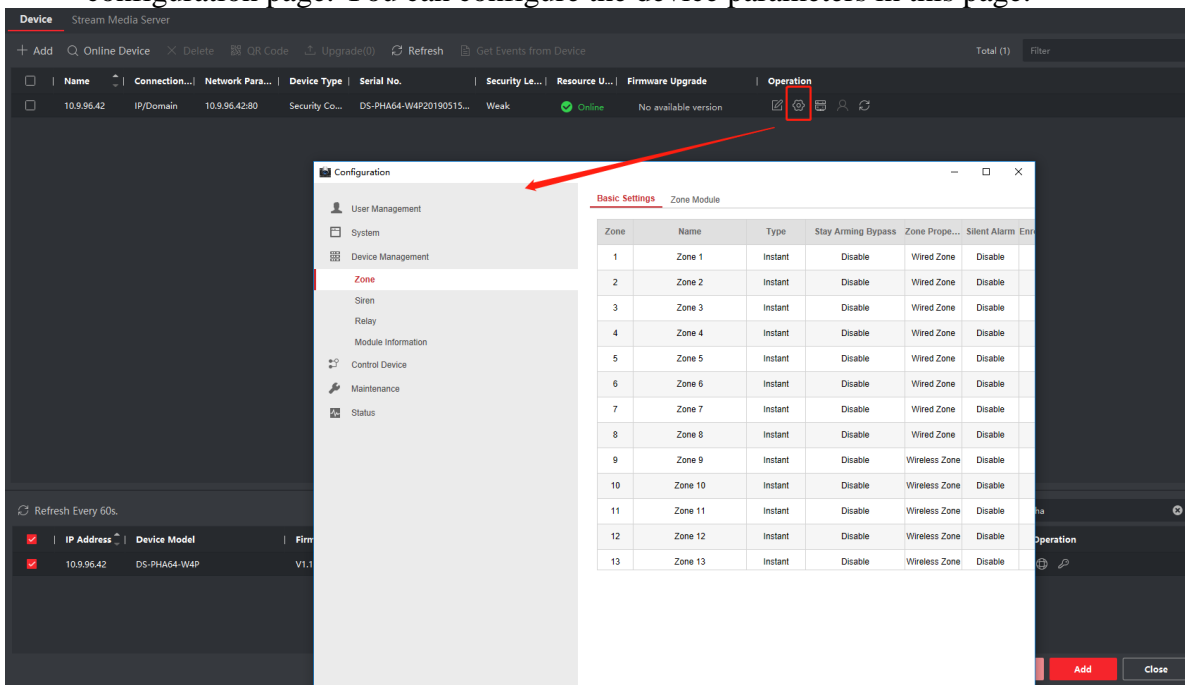
- 1) Download and install the software. Register to the software and add device in **Control Panel** → **Device Management** → **Device for Management**
- 2) Add device to iVMS-4200.(admin/installer)

| | | | | | |
|-----------------|---|-----------------|------|--------------|------------|
| Title: | DS-PHA How to Add Hybrid Control Panel to iVMS 4200 | Version: | v1.0 | Date: | 06/01/2020 |
| Product: | DS-PHA Series Hybrid Security Control Panel | | | Page: | 2 of 3 |



Note
 You should set the device port No. as **80**.
 The user name and password when adding device are the activation user name and password.

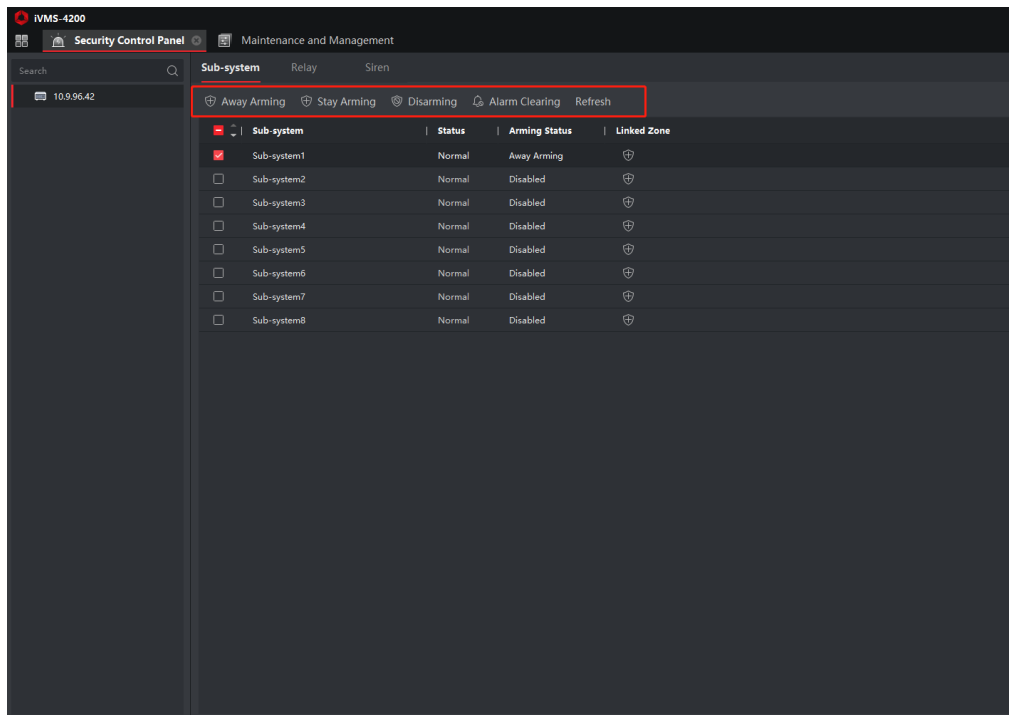
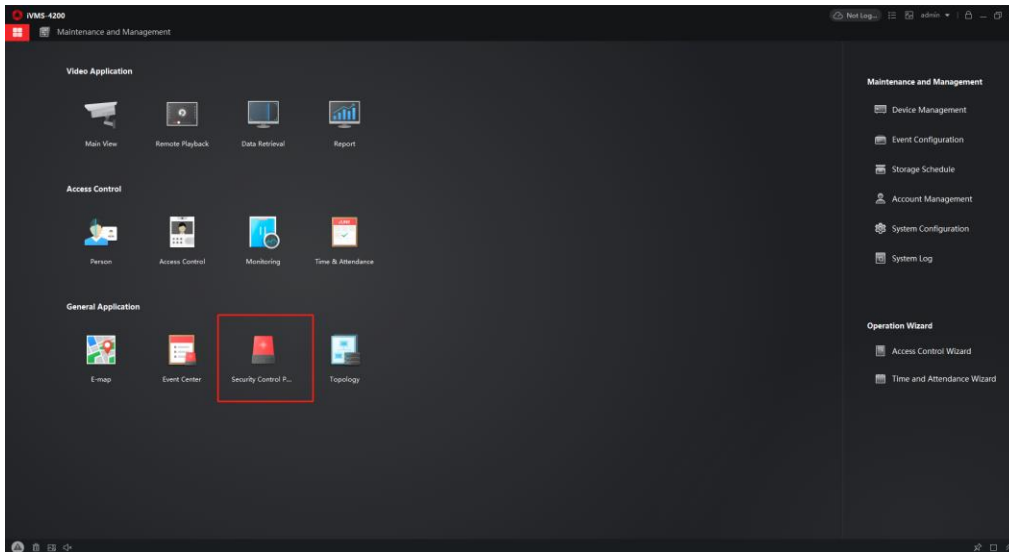
3) After the device is completely added, click **Remote Configuration** to enter the device configuration page. You can configure the device parameters in this page.



| | | | | | |
|-----------------|---|-----------------|------|--------------|------------|
| Title: | DS-PHA How to Add Hybrid Control Panel to iVMS 4200 | Version: | v1.0 | Date: | 06/01/2020 |
| Product: | DS-PHA Series Hybrid Security Control Panel | | | Page: | 3 of 3 |

3. Arm/Disarm by iVMS-4200

- 1) Click **Security Control Panel** to enter the alarm device control page. You can Arm/Disarm Panel in this page.





| | | | | | |
|-----------------|---|-----------------|------|--------------|------------|
| Title: | DS-PHA How to Add Hybrid Control Panel to iVMS 4200 | Version: | v1.0 | Date: | 06/01/2020 |
| Product: | DS-PHA Series Hybrid Security Control Panel | | | Page: | 4 of 3 |

First Choice for Security Professionals
***HIKVISION* Technical Support**