

Title:	How to add wired detector in Magnetic Contact	Version:	V1.2.8	Date:	06/15/2023
Product:	AX Pro, Detectors			Page:	1 of 1

Preparation

1. AX PRO V1.2.8build 230110
2. Detectors
3. Hik-connect App

How to add wired detector in Magnetic Contact

1. How many wired Detectors can be added in Magnetic Contact?

For Magnetic Contact (DS- PDMC-EG2-WE, DS- PDMCK-EG2-WE), it supports to add 2 external wired Inputs.

2. How does it work?

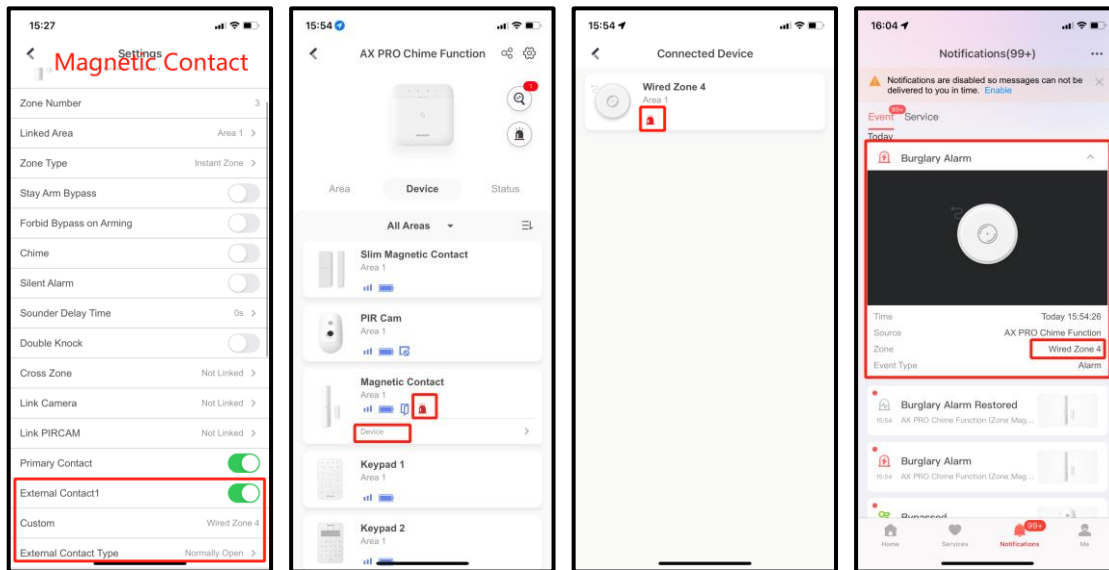
For example, there is Magnetic Contact

Step1: Enable the external Contact 1 in Magnetic Contact.

Step2: Choose the Contact Type: Normally Open

Step3: The wired zone 4 will be show on Magnetic Contact Device setting page.

Step4: The wired zone 4 is trigger, Alarm notification will be in HC



First Choice for Security Professionals
HIKVISION Technical Support