



## **How to Add Tag in AX PRO Wireless Control Panel**

<b>Title:</b>	How to Add Tag in AX PRO Wireless Control Panel	<b>Version:</b>	v1.0	<b>Date:</b>	12/11/2020
<b>Product:</b>	DS-PWA Series AX PRO Wireless Security Control Panel			<b>Page:</b>	1 of 3

## Preparation

---

1. DS-PWA Series AX PRO Wireless Security Control Panel
2. Wireless Tag DS-PT-MF or normal Mifare card
3. IE Browser and Hik-Connect App



## How to Configure Add Tag in AX PRO Wireless Control Panel

---

After adding cards/tags to the wireless AX PRO, you can swipe the card/tag to arm or disarm all the detectors added to specific area(s) of the AX PRO, and silence alarms.

**Note:** DS-PWA96 Series(support Max 48 Tags) have built-in Tag Reader, DS-PWA64 Series(support Max 32 Tags) need to connect Wireless Tag Reader(DS-PT1-W) to support this function.

### 1. Add the Tag to AX PRO with Hik-Connect

- 1) Enter the site, tap the AX PRO and then log in to the device.
- 2) Tap  → User Management → Card/Tag to enter the Tag Management page.
- 3) Tap  add a Tag.
- 4) When hearing the voice prompt "Swipe Tag", you should present the Tag on the AX PRO Tag presenting area.
  - When hearing a beep sound, the Tag is recognized.
  - The Tag will be displayed on the Tag page.
- 5) Tap Edit Icon to edit the Tag name
- 6) Slide Enable Tag
- 7) Select a linked user
- 8) Select the Tag type

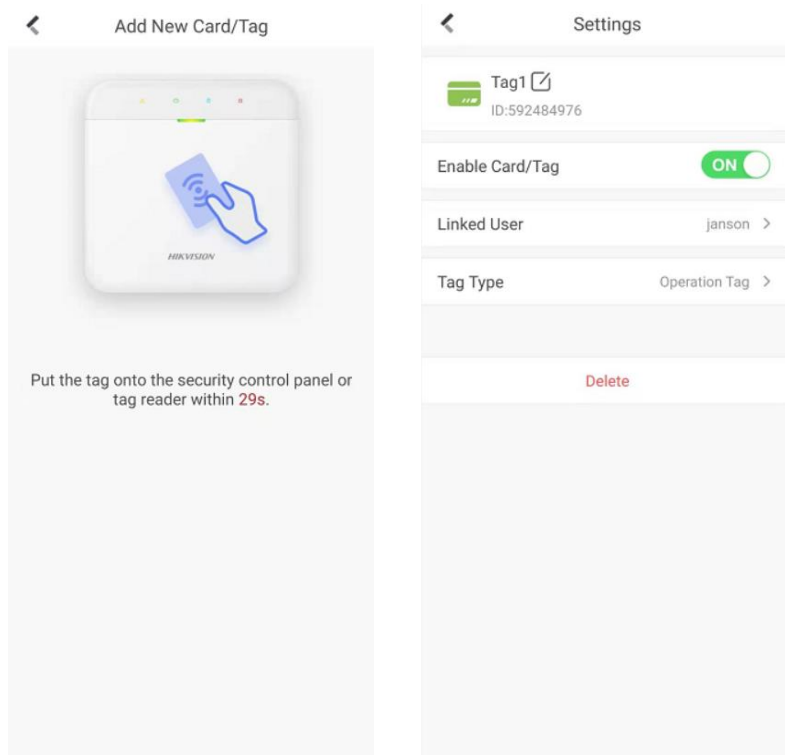
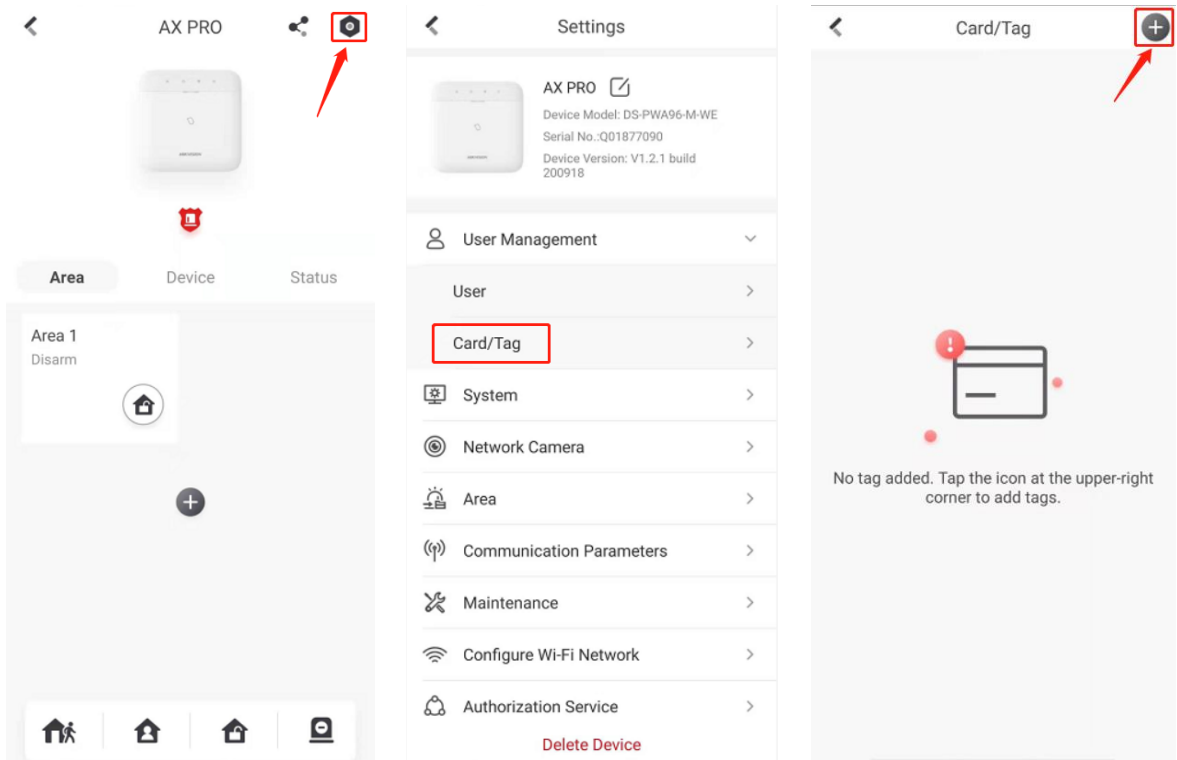
**Note:**

- If you log in as an installer, skip this step 5). Editing Tag name is only available to administrator.
- The name should contain 1 to 32 characters.
- Different linked users have different Tag permissions.

**Tag Type:**

**Operation Tag:** You can swipe the Tag to arm or disarm.

**Patrol Tag:** When you swipe the Tag, the system will upload a record (Not arm/disarm).



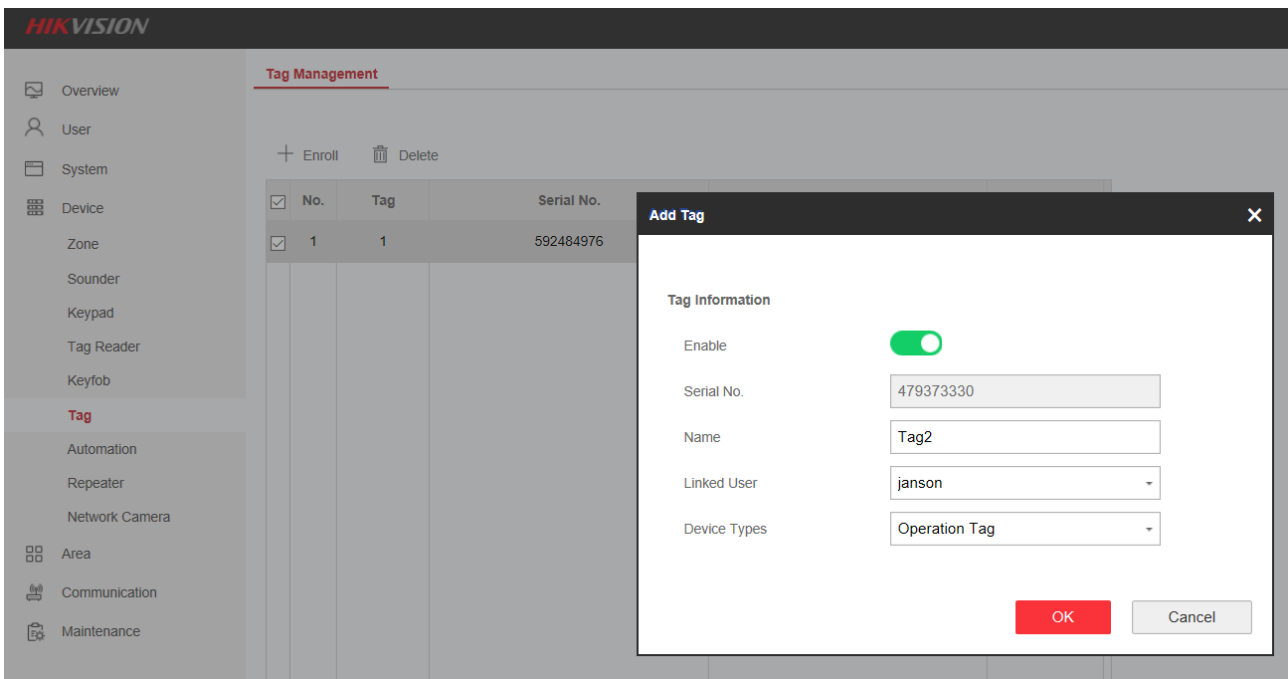
## 2. Add the Tag to AX PRO with IE Browser

- 1) Enter the site, tap the AX PRO and then log in to the device.
- 2) Click Device → Tag to enter the Tag Management page.
- 3) Click +Enroll to add a Tag.
- 4) When hearing the voice prompt "Swipe Tag", you should present the Tag on the AX PRO Tag presenting area.
  - When hearing a beep sound, the Tag is recognized.
  - The Tag will be displayed on the Tag page.
- 5) Click Edit Icon to edit the Tag name
- 6) Slide Enable Tag
- 7) Select a linked user
- 8) Select the Tag type

### Device Type:

**Operation Tag:** You can swipe the Tag to arm or disarm.

**Patrol Tag:** When you swipe the Tag, the system will upload a record (Not arm/disarm).





See Far, Go Further