


# 明眸设备如何连接安全模块

## How to connect secure module to the face recognition terminals

**介绍:** 门控安全模块, 也叫安全模块, 是为了实现在一体机宕机或遭受外力破坏时, 门始终保持宕机前的状态。门控安全模块是门禁系统中介于门禁一体机和门锁的中间层。上可连门禁一体机, 下可连如电锁, 门磁, 开门按钮, 韦根读卡器等外接设备。与门禁设备一起使用, 开门更安全。本文将介绍明眸 DS-K1T672MW 和 DS-K2M061 安全模块作为例子, 可为其他门禁一体机接安全模块作参考。

**Introduction:** The door control security module, also called the security module, is to realize that when the integrated machine is down or damaged by external forces, the door always maintains the state before the downtime. The door control security module is the middle layer between the door control integrated machine and the door lock in the access control system. The top can be connected to an access control integrated machine, and the bottom can be connected to external devices such as electric locks, door sensors, door opening buttons, Wiegand card readers and so on. Used together with access control equipment, opening the door is safer. This article will introduce Mimoe DS-K1T672MW and DS-K2M061 security module cores as examples, which can be used as a reference for other access control integrated machines to connect to security modules.

DS-K1T672MW Home > Access Control Products > Face Recognition Terminals > Ultra Series >




Ultra Series Wall-Mounted Face Access Terminal

- Forced mask wearing alert: If the recognizing face does not wear a mask, the device will prompt a voice reminder. At the same time, the authentication or attendance will be failed
- Face mask wearing alert: If the recognizing face does not wear a mask, the device will prompt a voice reminder. At the same time, the authentication or attendance is valid
- 7-inch touch screen with bezel-less design
- Presents card on the screen to authenticate card permission
- Face recognition. Distance: 0.3 m to 3 m, Duration < 0.2 s/User, Accuracy rate ≥ 99%, 50,000 face capacity, 50,000 card capacity (M1 card), and 50,000 event capacity
- Supports wiegand protocol and RS-485 protocol
- Two-way audio with indoor station and main station
- Configuration via the web client
- Supports ISAPI and ISUP5.0 protocol

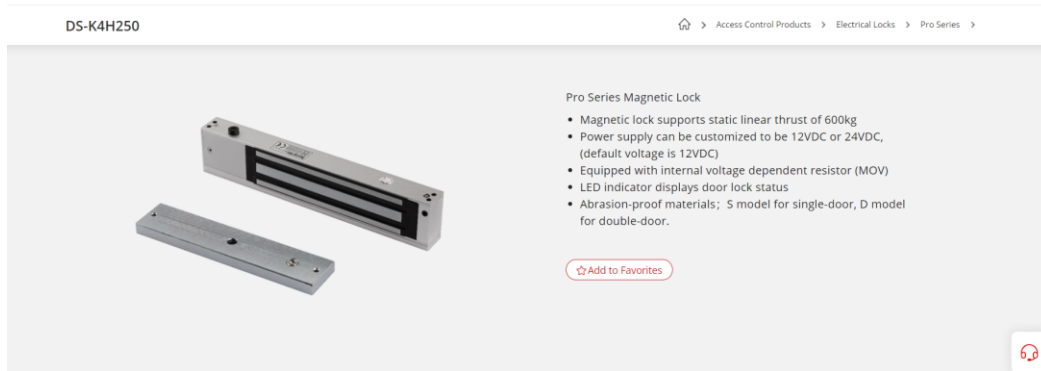
**HIKVISION** Products Solutions Support Partners Global EN

DS-K2M061 Home > Accessories > Access Control Accessories > Modules >



Secure Door Control Module

- Communicates with the access control terminal via RS-485 to execute the commands from the terminal including open door, close door, normally open and normally closed
- Collects the door magnetic signal, the exit button signal and the tamper-proof signal and send them to the access control terminal
- Supports tampering alarm
- Supports RS-485 communication indicators to show the communication status
- 4-ch DIP switch supporting ID No. configuration
- Supports a Wiegand interface to connect a Wiegand card reader to enter/exist access control terminal by swiping card
- Fire interface and exit button linkage

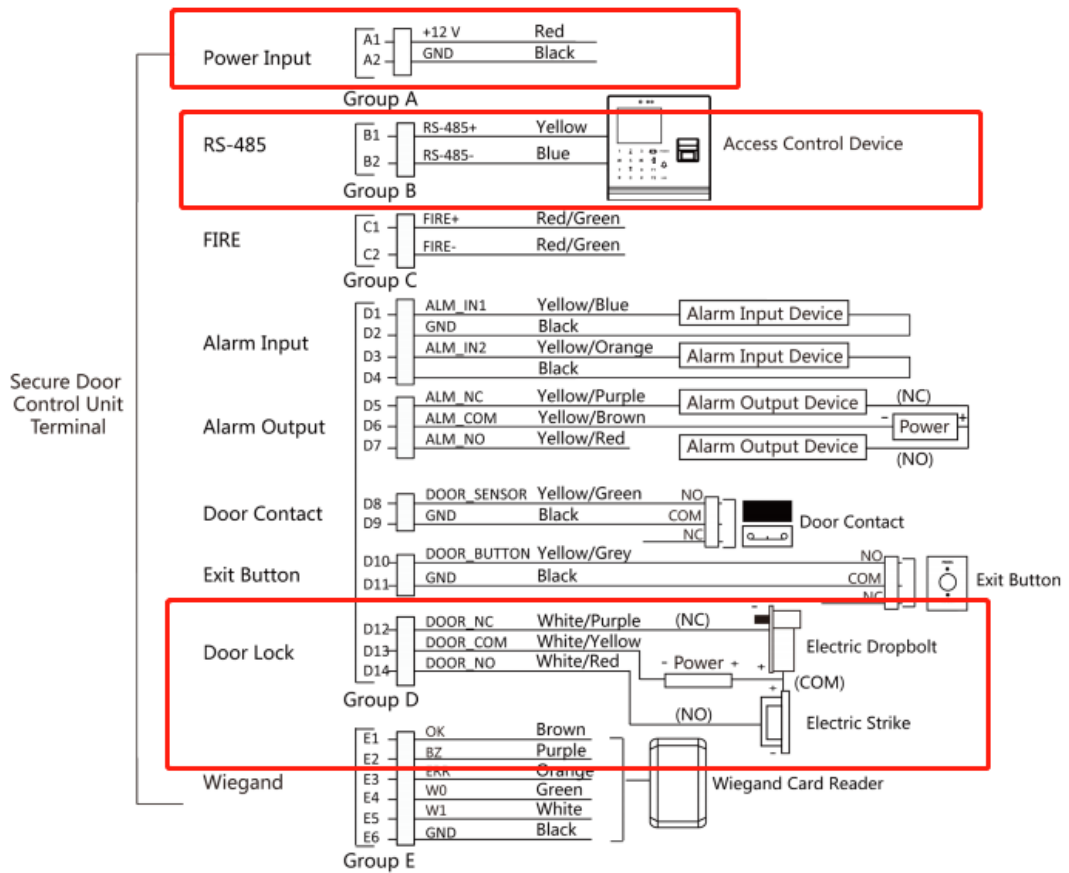


## 一、 接线 Wiring

首先找到 672 门禁组合线 RS485 标签所示的线、安全模块的 RS485 以及电磁锁的电源线，参照以下接线图进行接线。

First find the line shown on the RS485 label of the 672 access control combination line, the RS485 of the security module and the power line of the electromagnetic lock, and connect them with reference to the following wiring diagram.

The wiring of external devices is as following.



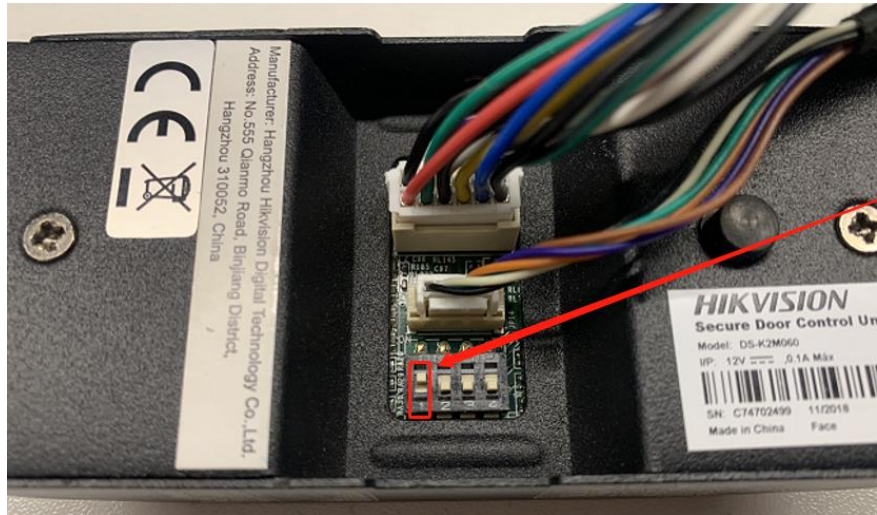
用户手册接线图

Wiring diagram of user manual

## 二、 配置 Configuration

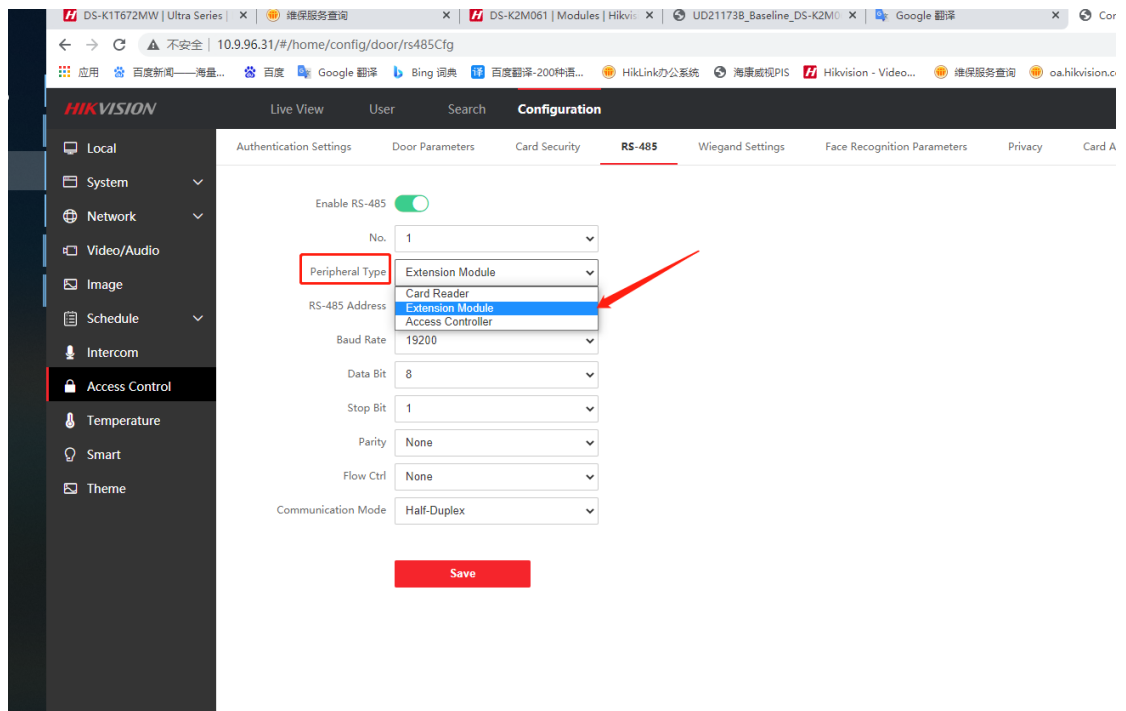
第一步：安全模块拨码设置，这里将拨码第一位往上拨，这样就实现了 DOOR 1 开门。

The first step: the security module dial code setting, here dial code 1 will be dialed online, so that DOOR 1 door opening is realized.



第二步：登录 672 明眸网页端配置界面，进入 Access control-> RS-485，选择 peripheral type 选为 Extension Module。（也可在设备本地端 UI 界面上配置）

Step 2: Log in to the 672 web-side configuration, go to Access control-> RS-485, and select the peripheral type as Extension Module.

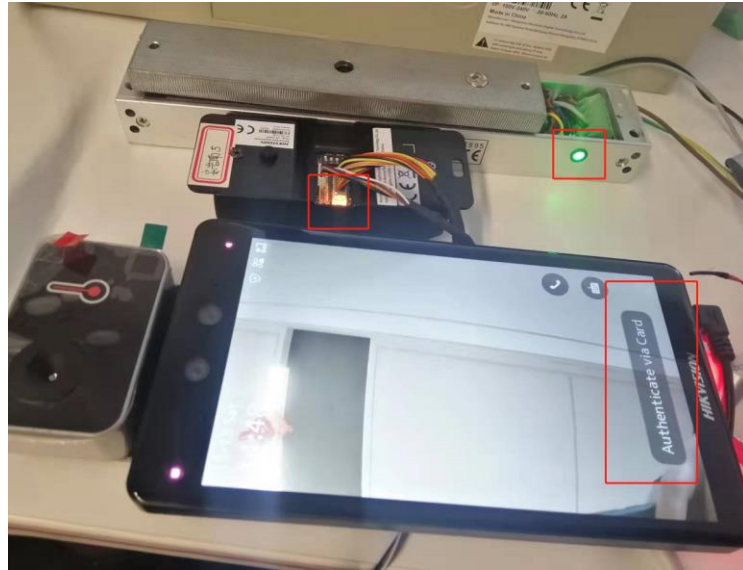


### 三、 刷卡验证 Wiring

当接线和配置都完成后，可以在 672 上刷卡，如果正常电磁锁会从吸合状态切换到断开状态。

When the wiring and configuration are completed, you can swipe the card on the

672. If the electromagnetic lock is normal, it will switch from the pull-in state to the disconnected state.



## 附录 Appendix

- 1、如果刷卡后，电磁锁不断电，检查安全模块和一体机的 485 连接，安全模块拨码。  
1 . If the electromagnetic lock will not be powered off after swiping the card, check the 485 connection of the security module and the face access terminal, the security module dial code.
- 2、实际操作部分，可参照以下视频。  
2. For the actual operation part, please refer to the following video.



DS-K2M061  
security module.n