

Title:	How to open the door with QR code in MinMoe terminal.	Version:	v1.0	Date:	28/01/2021
Product:	Access Control	Page:	1 of 5	HIKVISION	

How to open the door with QR code in MinMoe terminal. (latest firmware version)

(2021-01-28)

Preparation

This document displays guidance on how to configure QR code in IVS4200 software and open door with it on MinMoe access control terminal.

1. Set a QR Code for person

Add the device in 4200, add the person with QR code and apply the information of this person to device. (In this function, basically if we add the card, the system will automatically generate a QR code for this card which can be used to open the door.)

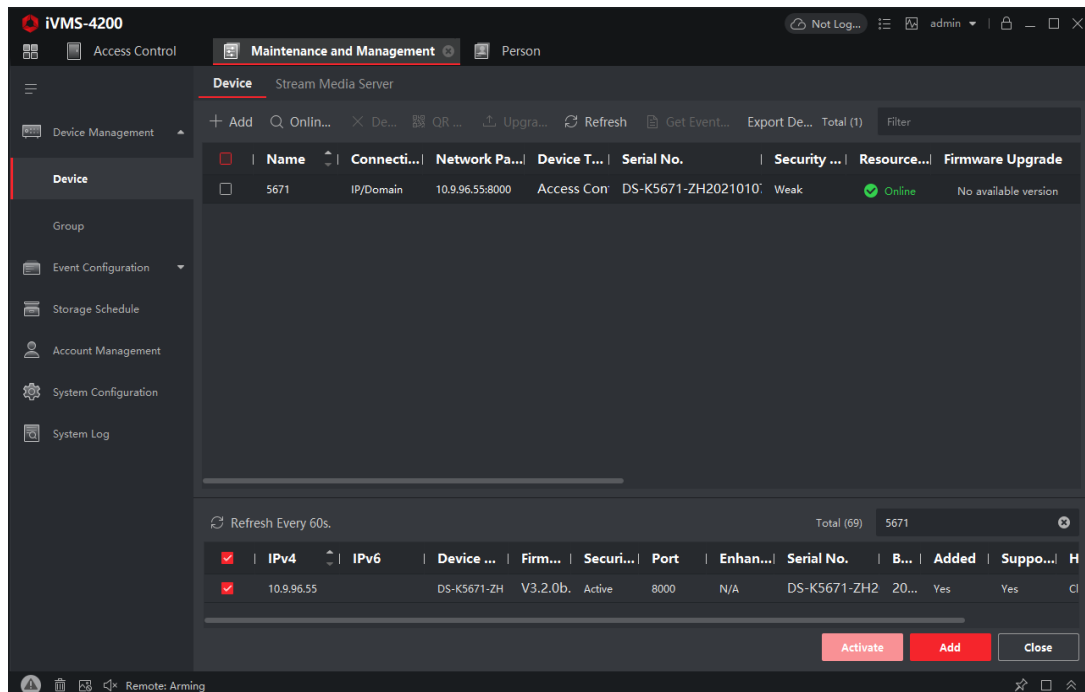


Fig. 1 add the device in 4200

Title:	How to open the door with QR code in MinMoe terminal.	Version:	v1.0	Date:	28/01/2021
Product:	Access Control	Page:	2 of 5	HIKVISION	

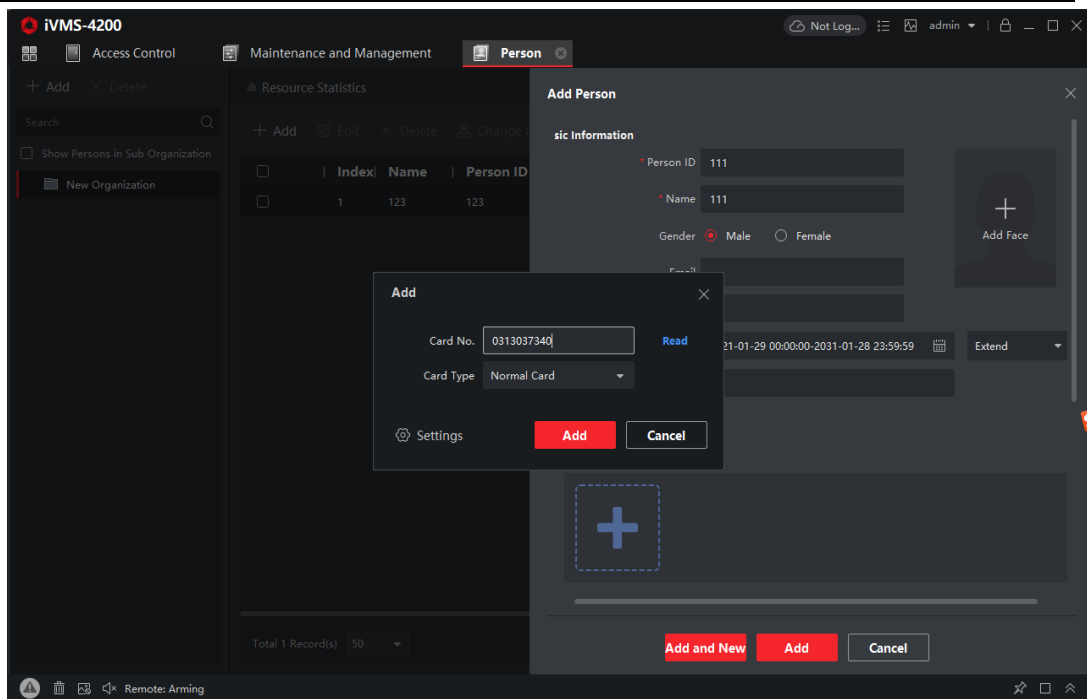


Fig. 2 add the person with his private card

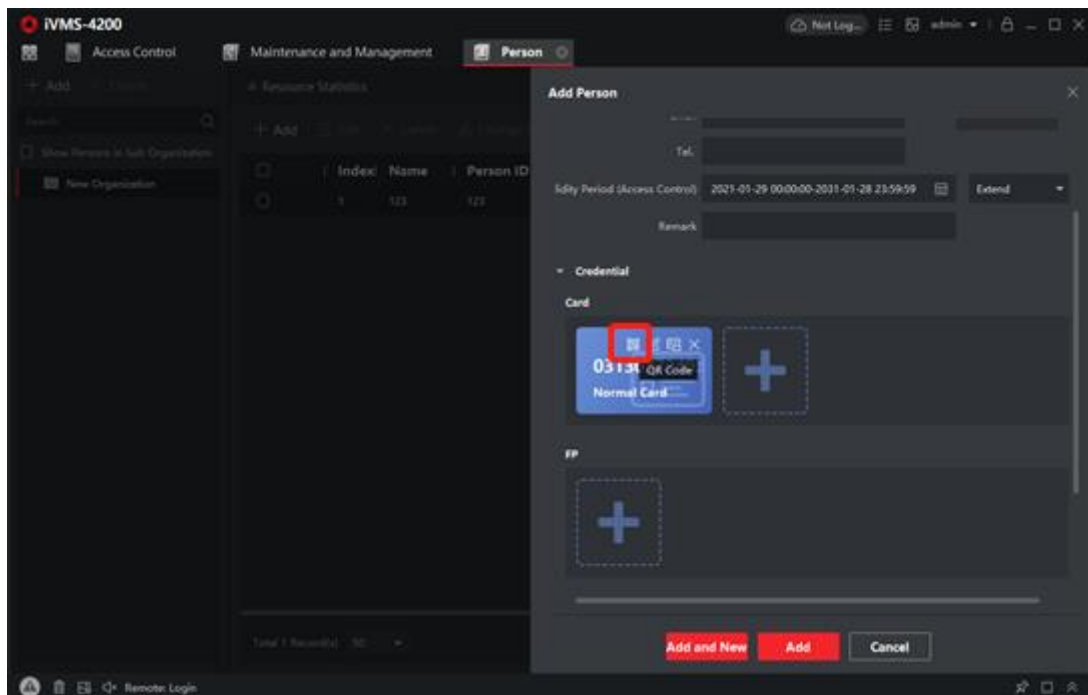


Fig. 3 automatically generate a QR code for this card (click the QR code)

Title:	How to open the door with QR code in MinMoe terminal.	Version:	v1.0	Date:	28/01/2021
Product:	Access Control	Page:	3 of 5	HIKVISION	

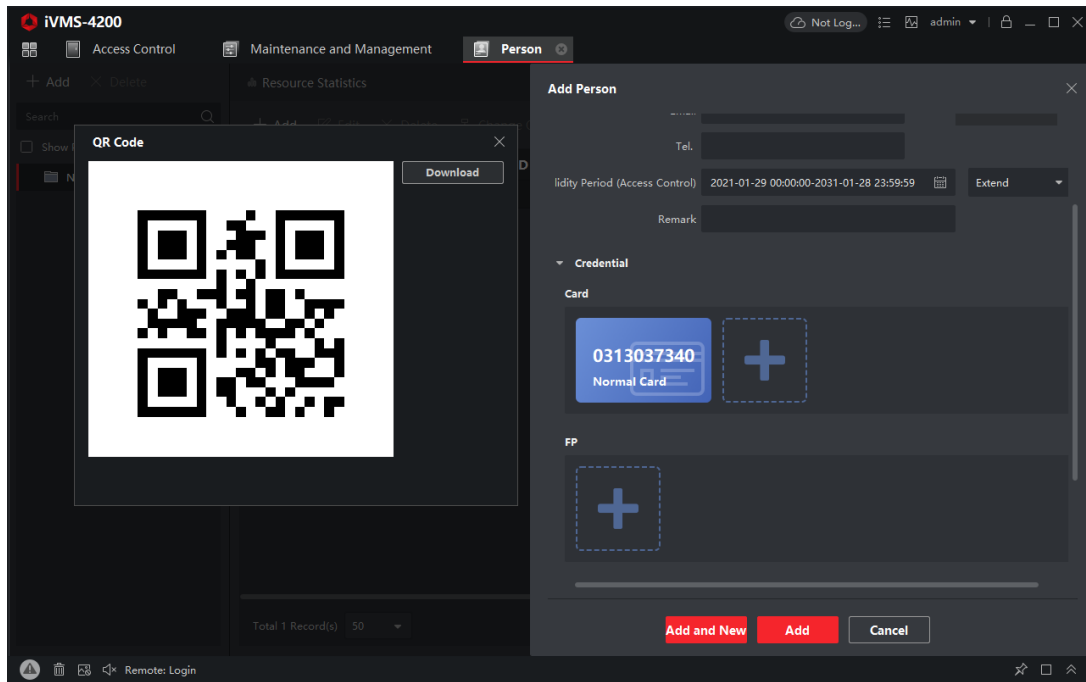


Fig. 1 download the QR code

2. Open the door with QR code

- 1) Enter the interface on the device where we can scan QR code (click on the QR code button)

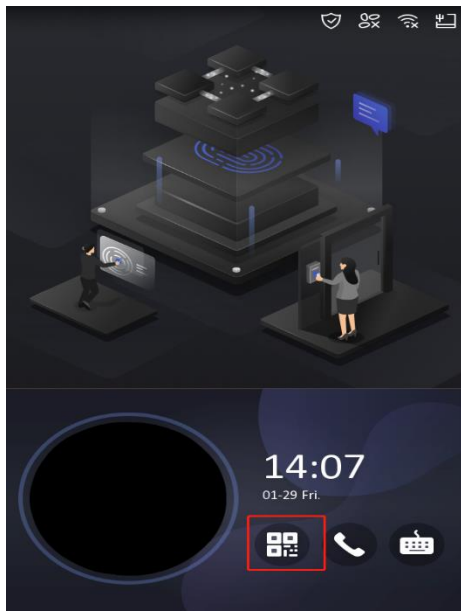


Fig. 1 screen with advertisement

OR

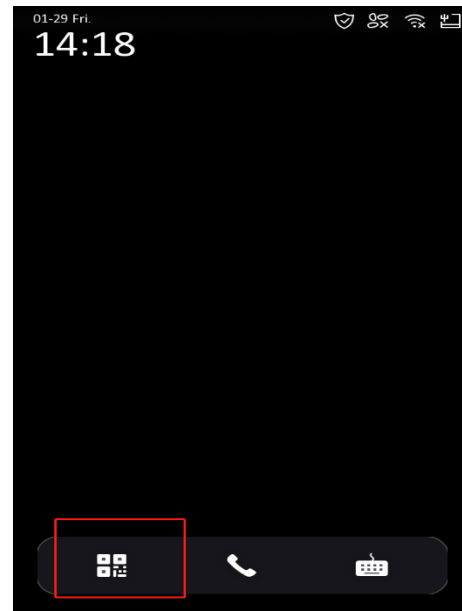
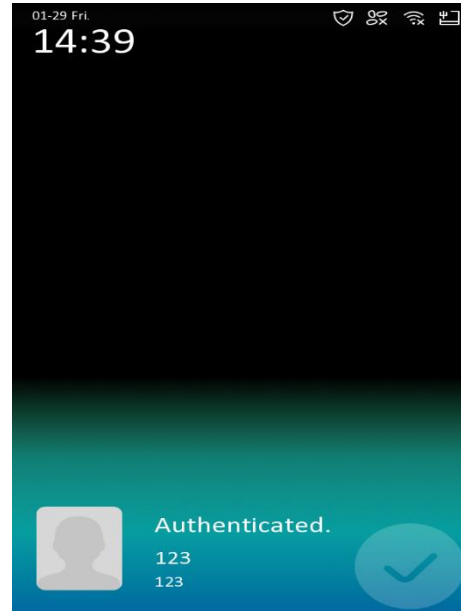
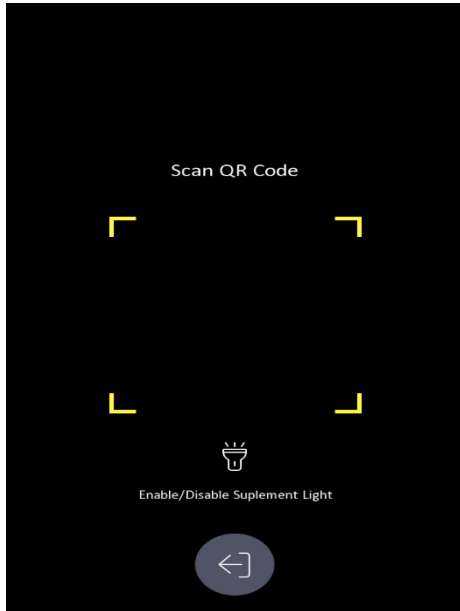


Fig. 2 screen without advertisement

Title:	How to open the door with QR code in MinMoe terminal.	Version:	v1.0	Date:	28/01/2021
Product:	Access Control	Page:	4 of 5	HIKVISION	

2) scan the QR code



Title:	How to open the door with QR code in MinMoe terminal.	Version:	v1.0	Date:	28/01/2021
Product:	Access Control	Page:	5 of 5	HIKVISION	

See Far Go Further

HIKVISION Technical Support