



How to use IP Speaker with EUI NVR

Title:	How to use FM2466 on NVR 5.0	Version:	v1.0	Date:	27/02/2023
Product:	NVR			Page:	1 of 9

Preparation

1. EUI NVR with 4.82.000_240224 firmware
2. Hikvision IP Speaker with 1.2.2_240103 firmware

How to use IP Speaker with EUI NVR

1) Add IP Speaker to NVR:

a. Connect IP Speaker to the same LAN with NVR.

b. Go to NVR Local GUI- Configuration- Device Access- IP Speaker.

Activate device and set device password (follow the password setting restrictions)

The screenshot displays the NVR configuration interface for IP Speakers. The left sidebar shows the navigation menu with 'IP Speaker' selected. The main content area is divided into two sections: 'Added Device List' and 'Online Device List'.

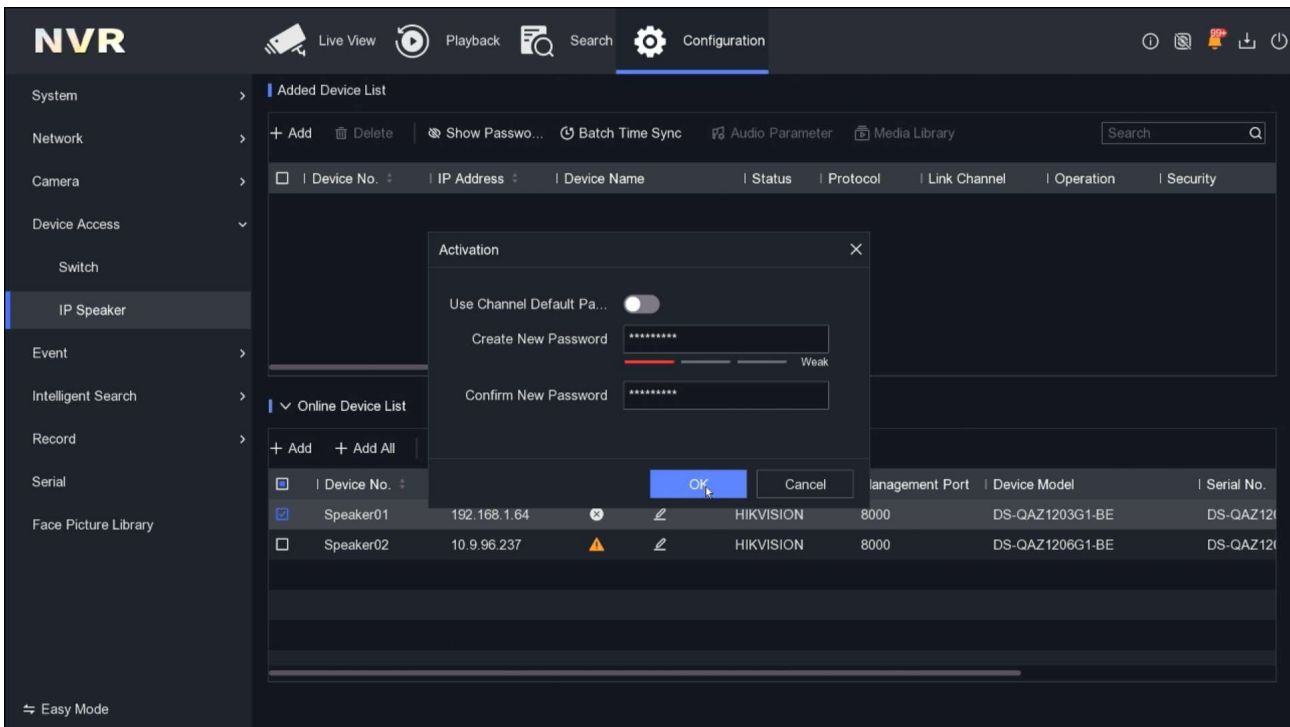
Added Device List:

Device No.	IP Address	Device Name	Status	Protocol	Link Channel	Operation	Security
No devices added. Click + to add.							

Online Device List:

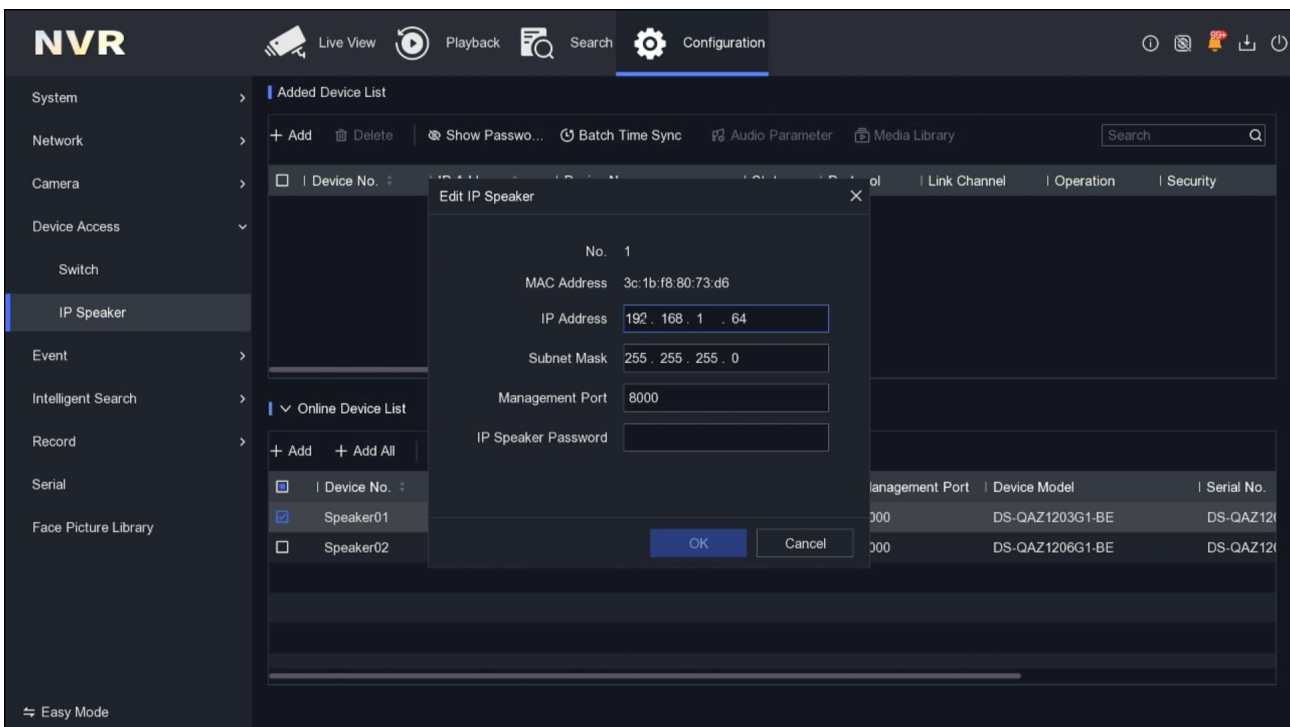
Device No.	IP Address	Status	Operation	Protocol	Management Port	Device Model	Serial No.
Speaker01	192.168.1.64	The IP speaker is not activated		HIKVISION	8000	DS-QAZ1203G1-BE	DS-QAZ1203G1-BE
Speaker02	10.9.96.237			HIKVISION	8000	DS-QAZ1206G1-BE	DS-QAZ1206G1-BE

Title:	How to use FM2466 on NVR 5.0	Version:	v1.0	Date:	27/02/2023
Product:	NVR			Page:	2 of 9



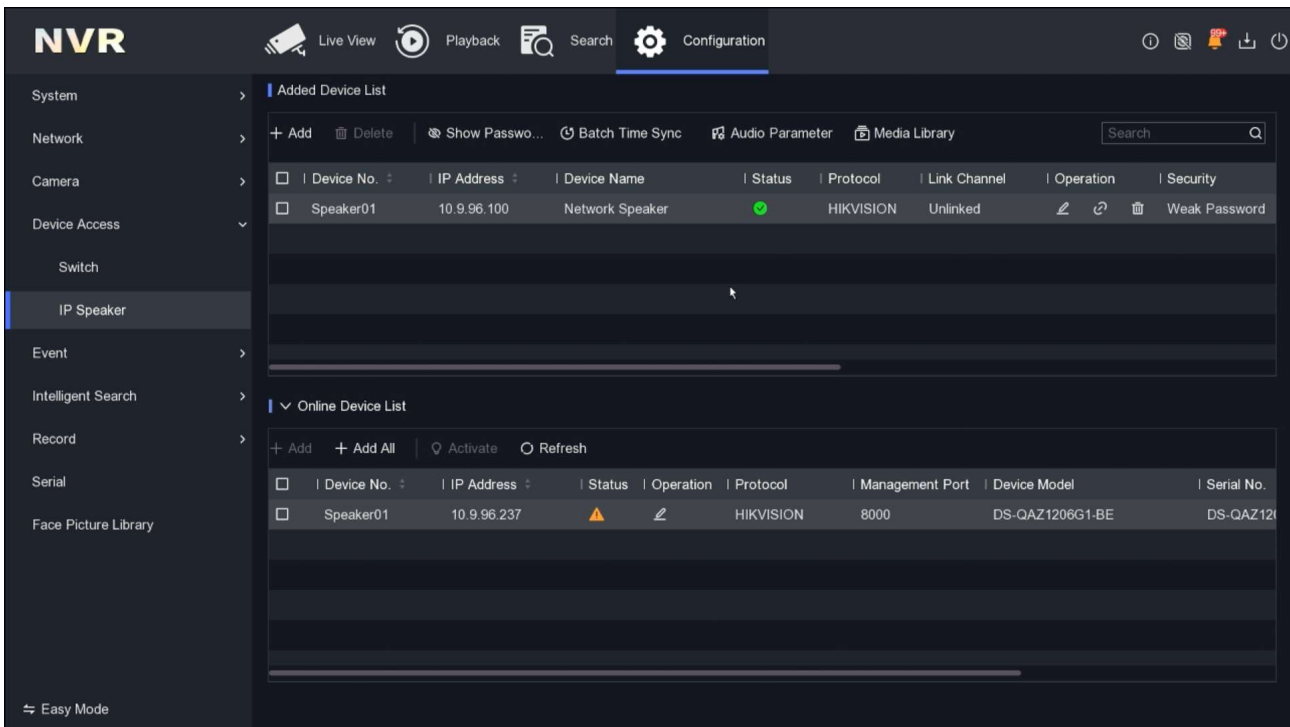
After activation, device'IP is still 192.168.1.64 by default, user needs to manually set its IP.

--- consider NVR automatically turns on IP Speaker's DHCP after activation



Click 'Add' and IP Speaker is added successfully.

Title:	How to use FM2466 on NVR 5.0	Version:	v1.0	Date:	27/02/2023
Product:	NVR			Page:	3 of 9

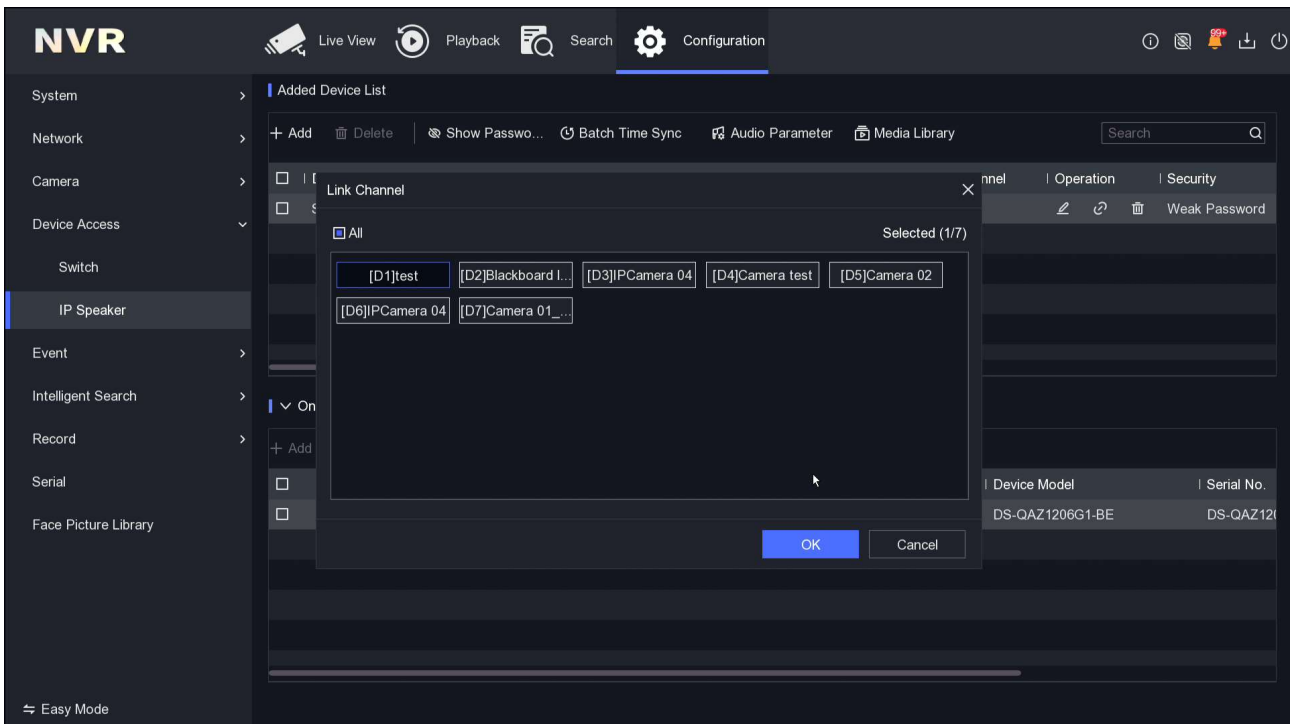


For NVR with EXPERT MENU(GUI5.0): 8-channel IP Speaker can be added;

For NVR with EASY MENU(EUI 4.0): 4-channel IP Speaker can be added;

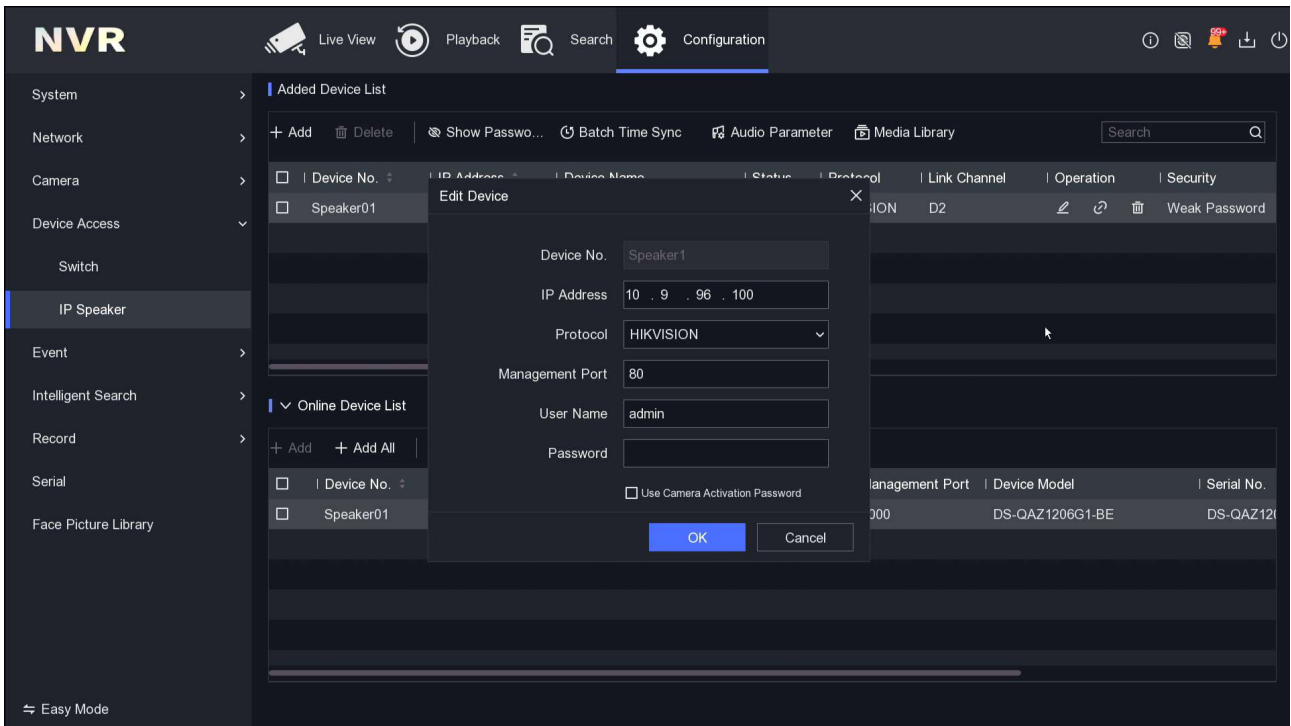
IP Speaker is not linked to any IPC channel after adding, click 'Operation- Link Channels' and link it.

---consider automatically show link channel page after adding like WEB GUI does.



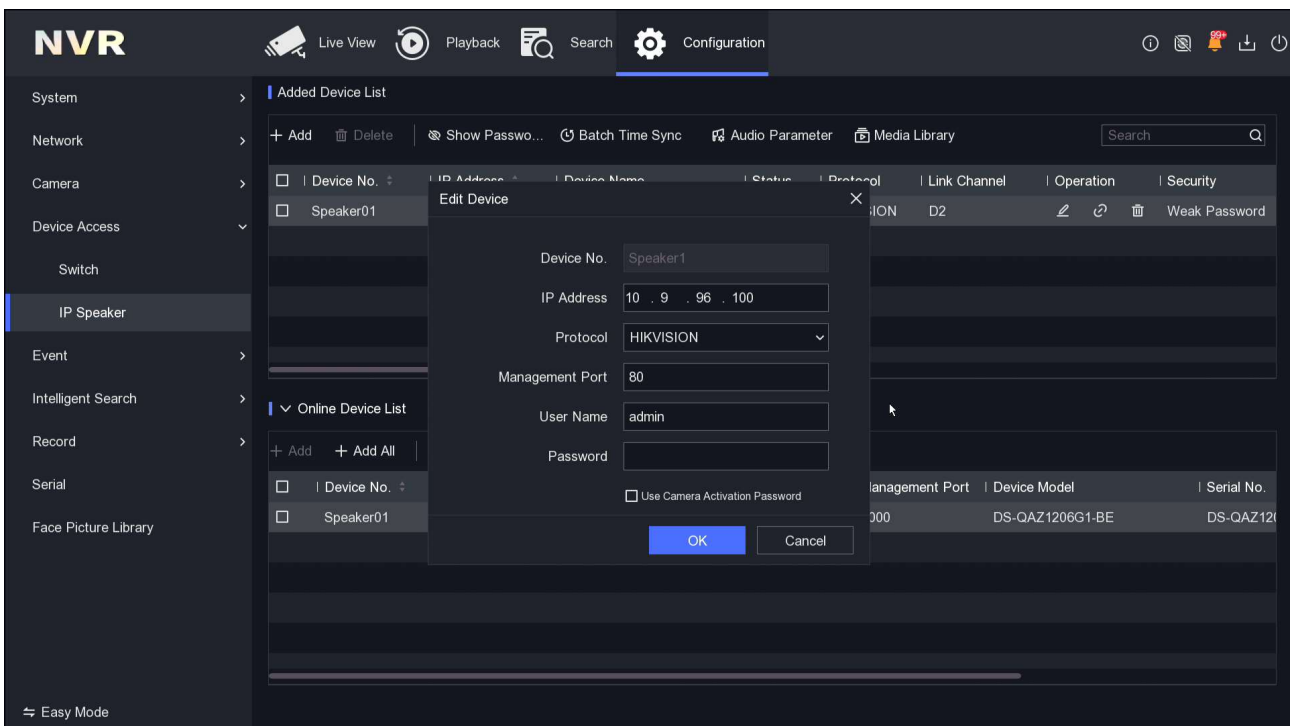
Title:	How to use FM2466 on NVR 5.0	Version:	v1.0	Date:	27/02/2023
Product:	NVR			Page:	4 of 9

Note: During the entire adding process, the management port of IP Speaker is 8000 by default. But the actual management port in the NVR –IP Speaker topology is 80. And after adding, the management port in device edit page is shown as 80. Consider change this inconsistency and display management port as 80 always in IP Speaker page.



b. IP Speaker configurations:

1. Go to 'Operation-Edit Device':



Title:	How to use FM2466 on NVR 5.0	Version:	v1.0	Date:	27/02/2023
Product:	NVR			Page:	5 of 9

Device No: default shown as Speaker01/02 and cannot change;

Protocol: Protocol type used to add devices. For now, only Hikvision protocol is supported;

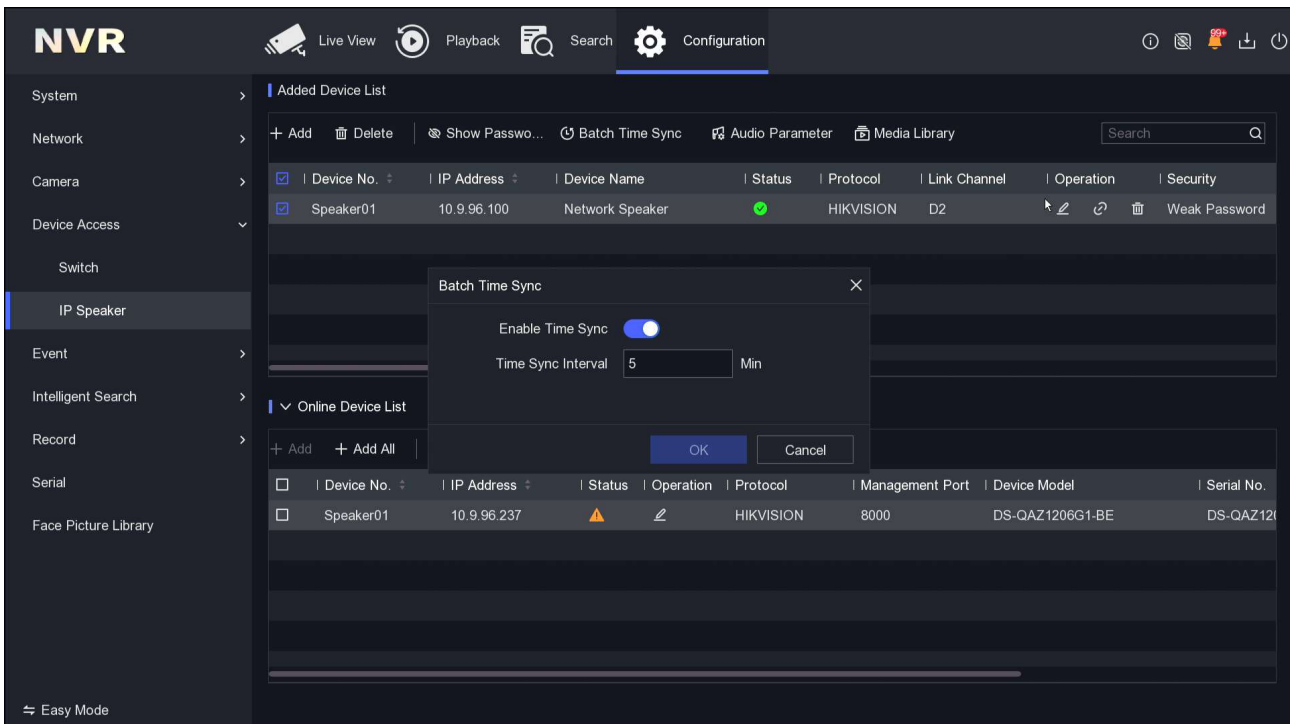
Device IP: IP address of speaker;

Port: 80 by default and can be modified;

User Name: User name of Speaker;

Password: Password of Speaker;

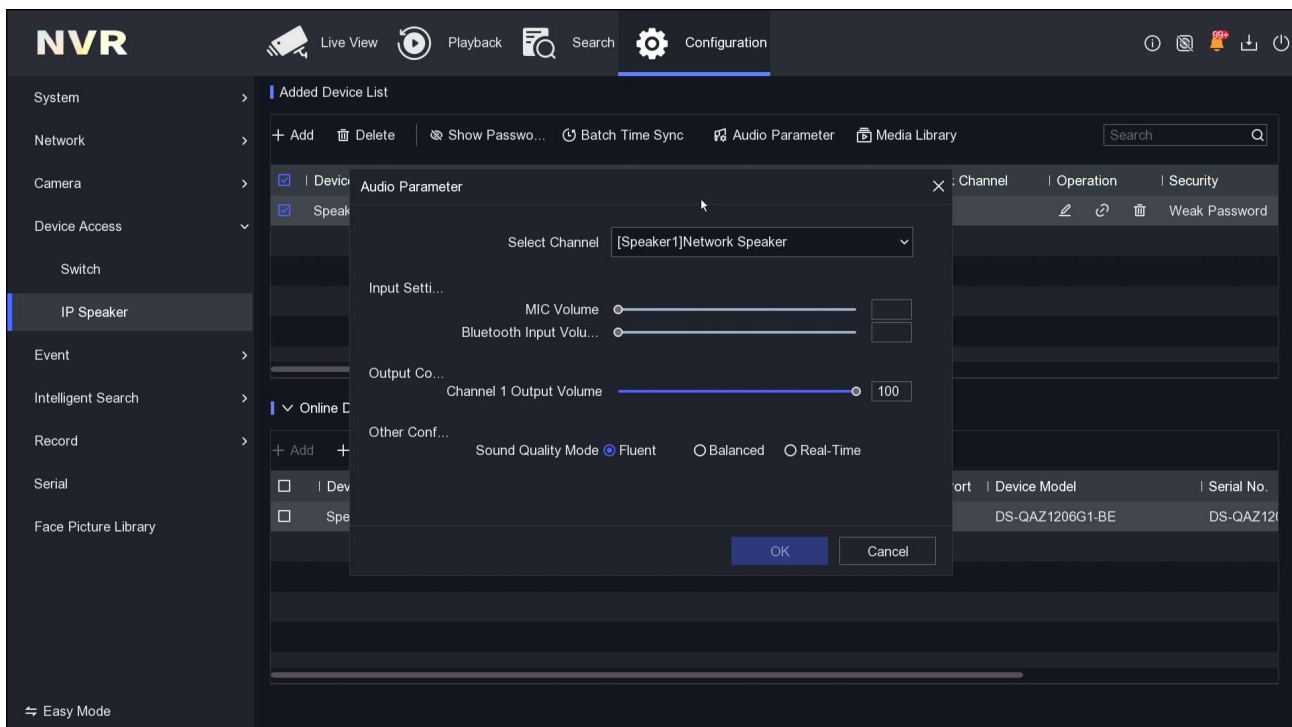
2. Go to 'Batch Time Sync':



User can enable time sync on NVR and set time sync interval.

3. Go to 'Audio Parameter':

Title:	How to use FM2466 on NVR 5.0	Version:	v1.0	Date:	27/02/2023
Product:	NVR			Page:	6 of 9



Select Channel: Select the Speaker which you need to change parameters on;

MIC Volume: set MIC input Value;

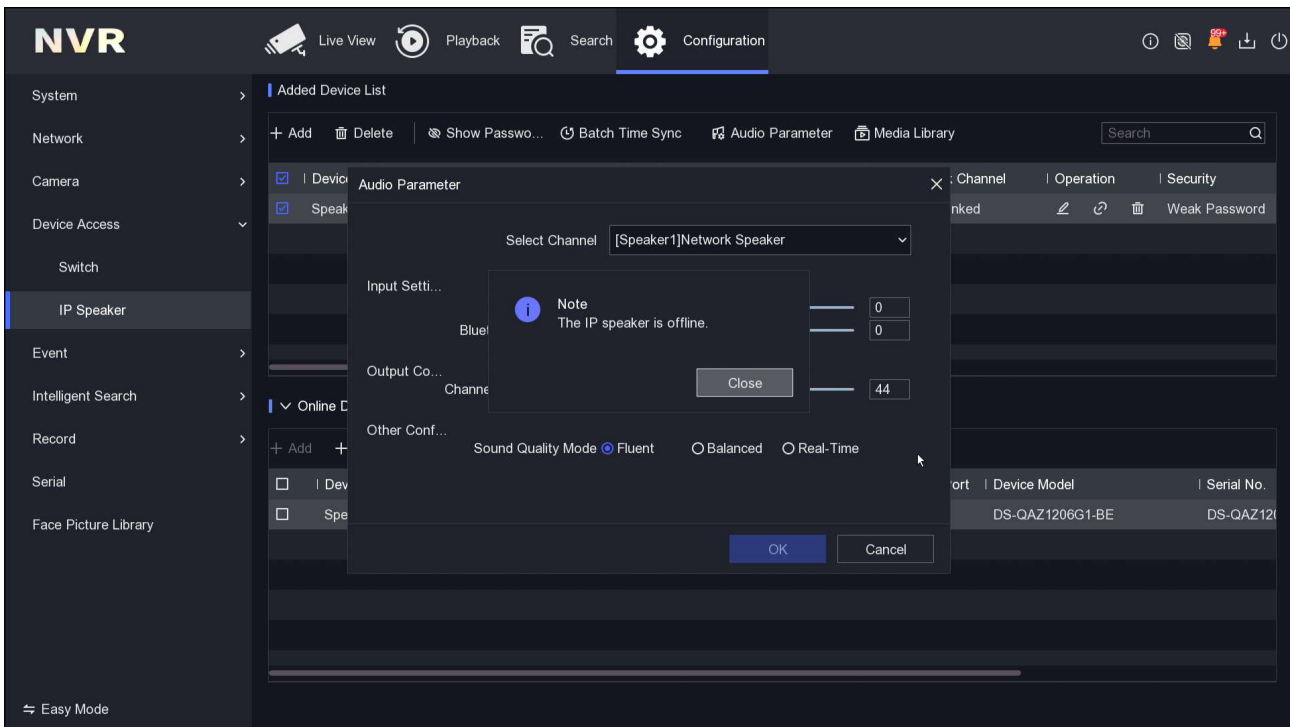
Bluetooth Input Volume: set Bluetooth Input Volume ;

Channel 1 Output Volume: set Channel 1 Output Volume(all speakers have only 1 output channel so far);

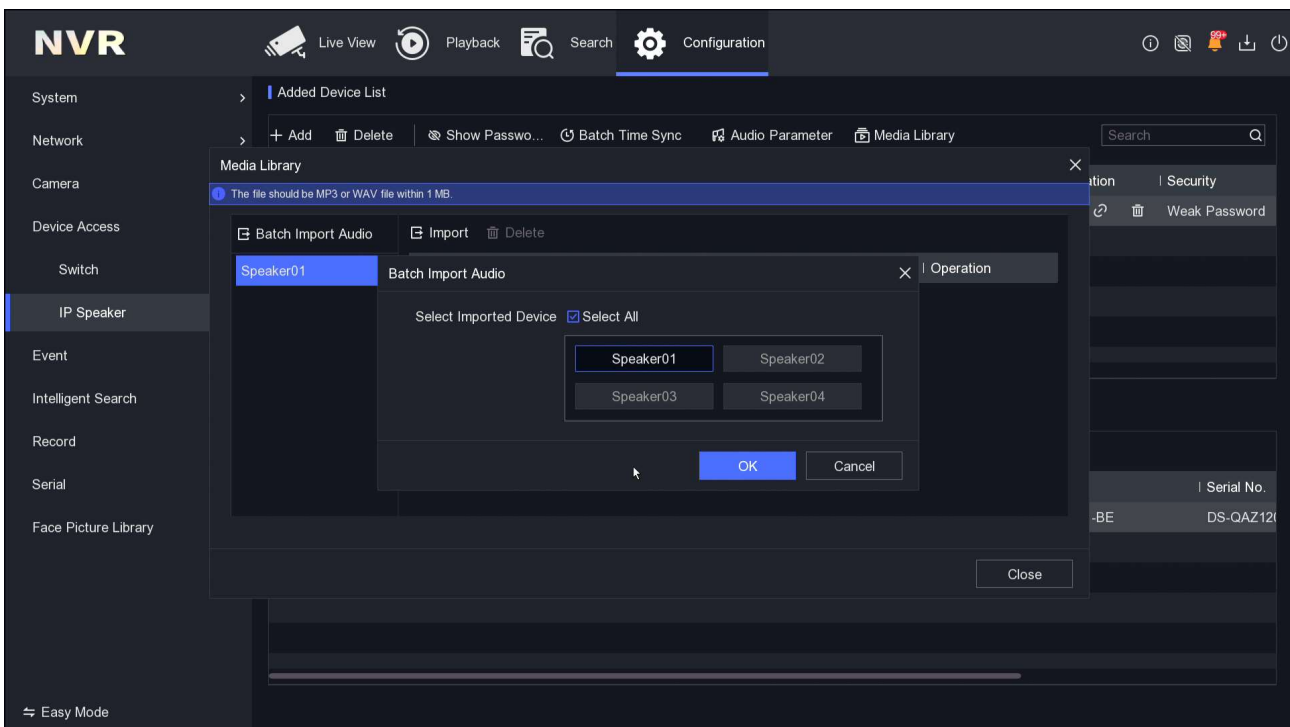
Sound Quality Mode: change it to Fluent, Balanced & Real-Time based on user demand;

---this configuration page is not functioning as expected and all configurations show 'IP Speaker Offline' error. Web GUI is functioning normally.

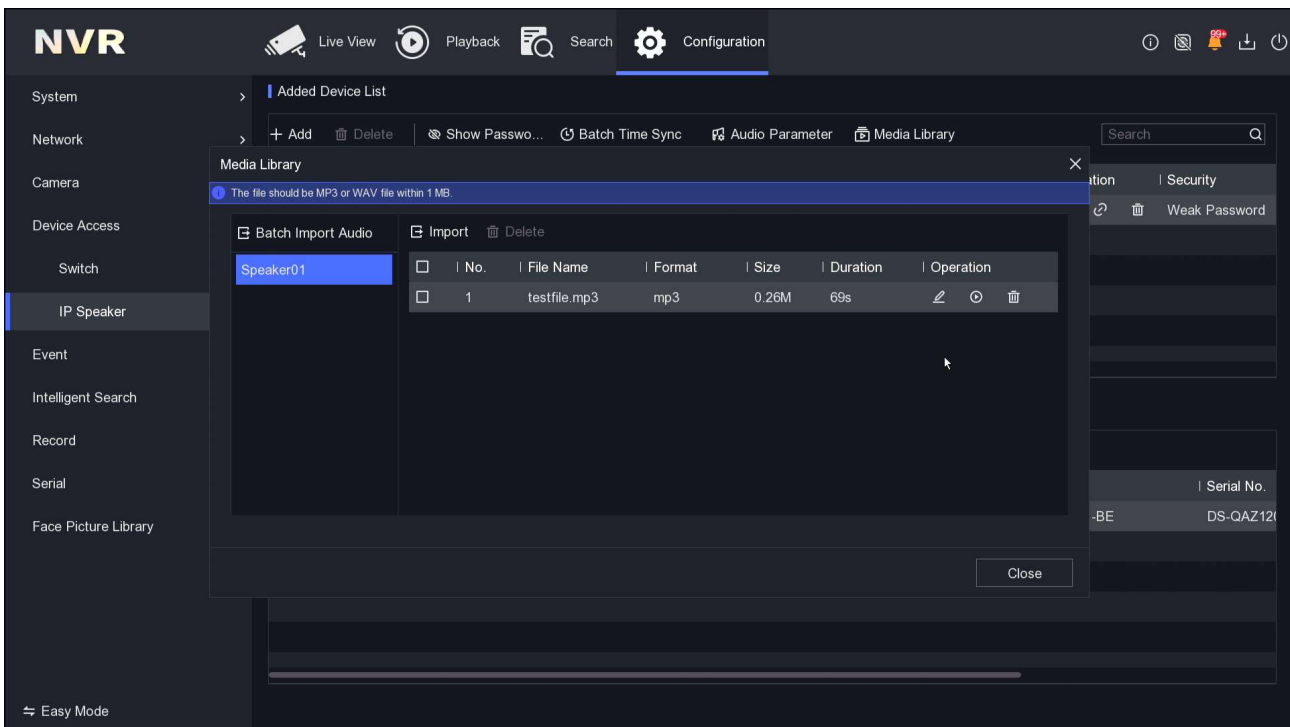
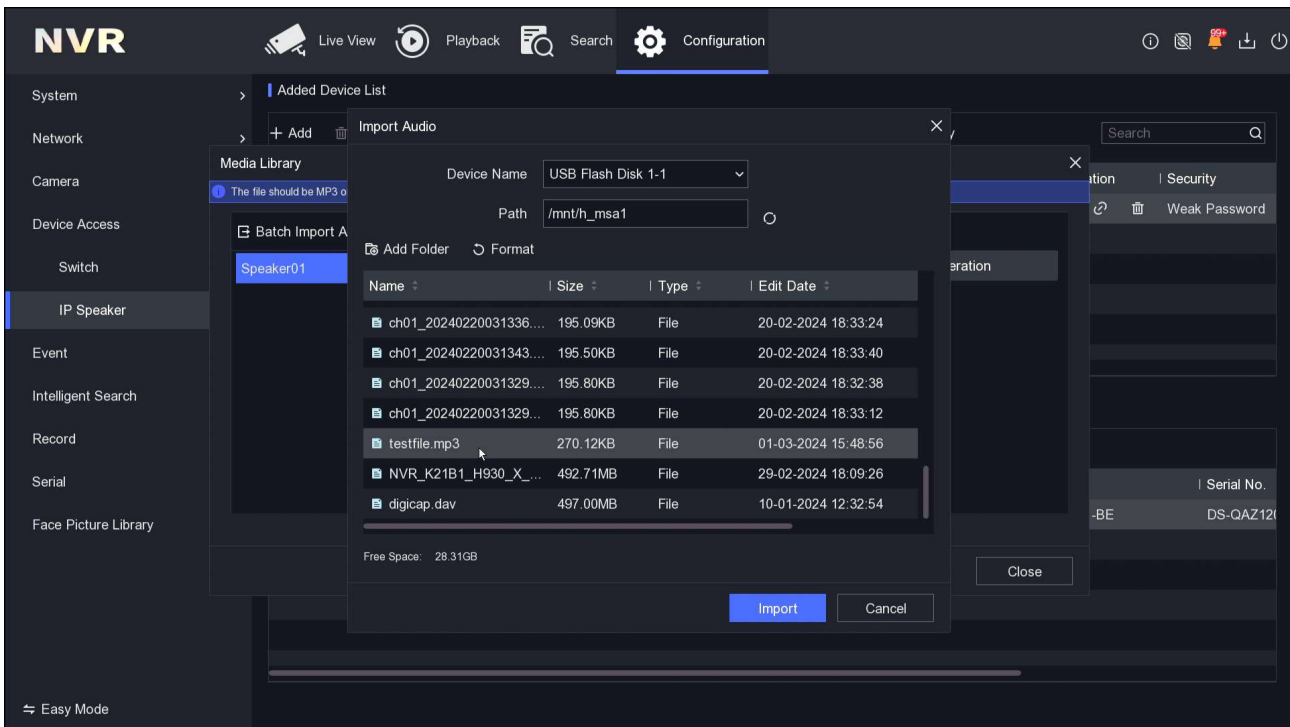
Title:	How to use FM2466 on NVR 5.0	Version:	v1.0	Date:	27/02/2023
Product:	NVR			Page:	7 of 9



4. Go to 'Audio Library' and click 'Batch Import Audio', choose the IP Speaker which you need to import audio documents into(audio documents should be mp3 or wav file within 1MB);



After Speaker Select, click 'Import' and use USD-disk that has been inserted into the NVR to import audio files;



User can change file name, Play it on IP Speaker & delete it in Media Library.

--- **If user chooses to import audio file from Speaker web page, the Media Library on NVR will not be able to sync with it.**

c. Use alarm linkage , two-way audio & one-way broadcast:

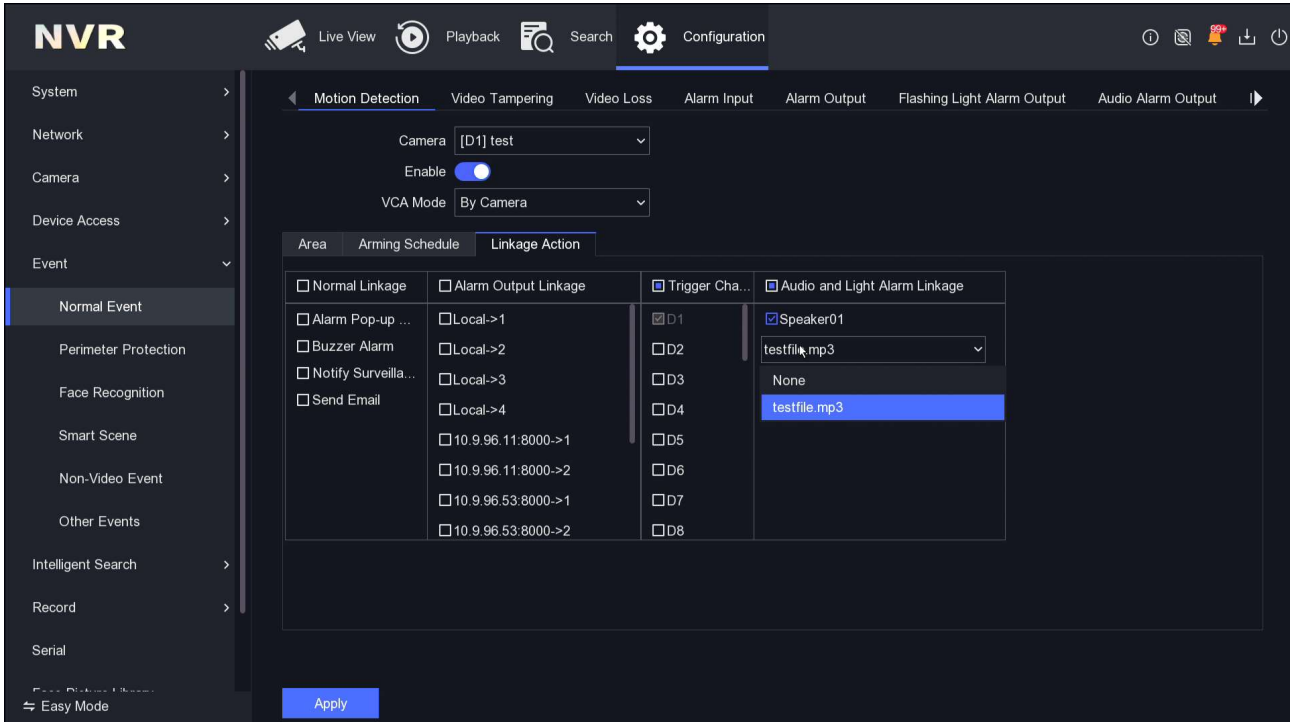
1. alarm linkage:

New linkage mode is added for perimeter events (Line Crossing, Intrusion, Region Entrance,

Title:	How to use FM2466 on NVR 5.0	Version:	v1.0	Date:	27/02/2023
Product:	NVR			Page:	9 of 9

Region Exiting) and movement detection events, enabling speakers to select configurable events for broadcast

For example, IP Speaker linkage on IPC motion detection events, go to ‘Linkage Action- Audio and Light Alarm Linkage’, choose IP Speaker and use of audio file, click ‘Apply’:



2. two-way audio:

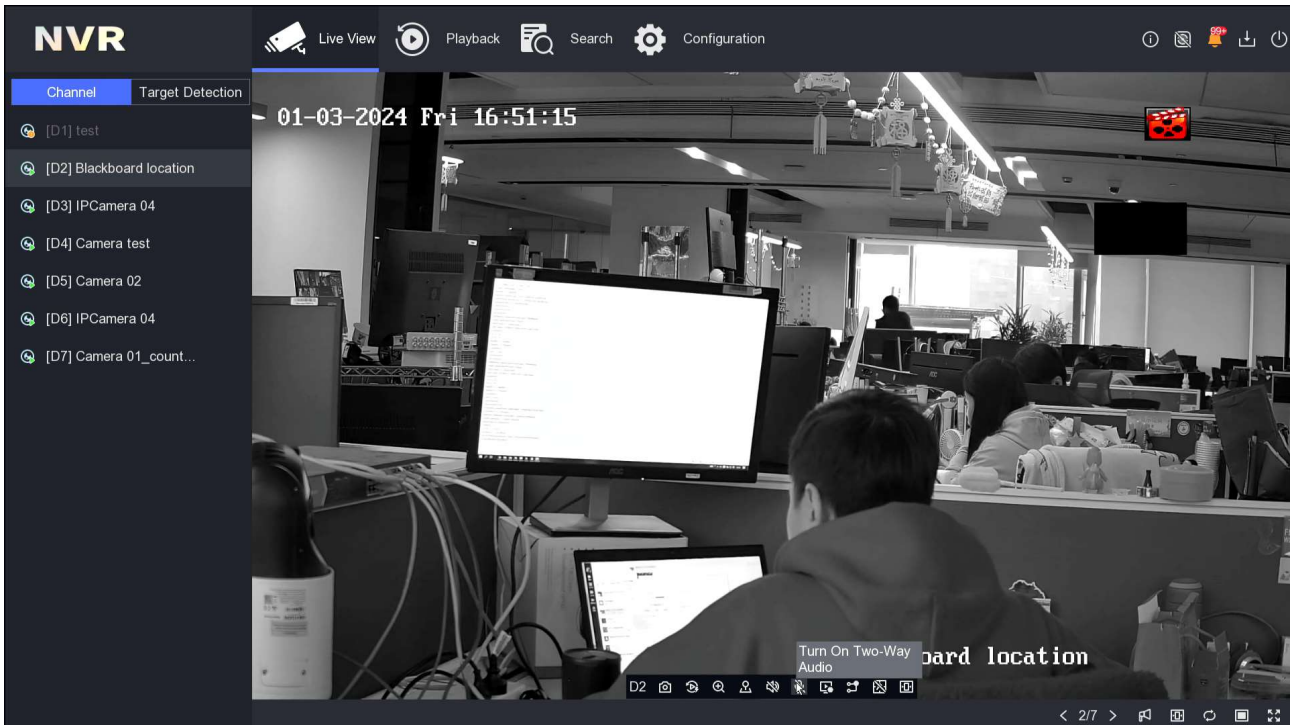
IP Speaker must support built-in MIC so that user can two-way audio with it.

IP Speaker must be linked to certain IPC channels for two-way audio to function.

Two-way audio in Local GUI:

User must connect MIC to local Line-In and Speaker to local Line-Out and click ‘Turn On Two-Way Audio’ on liveview page to start two-way audio:

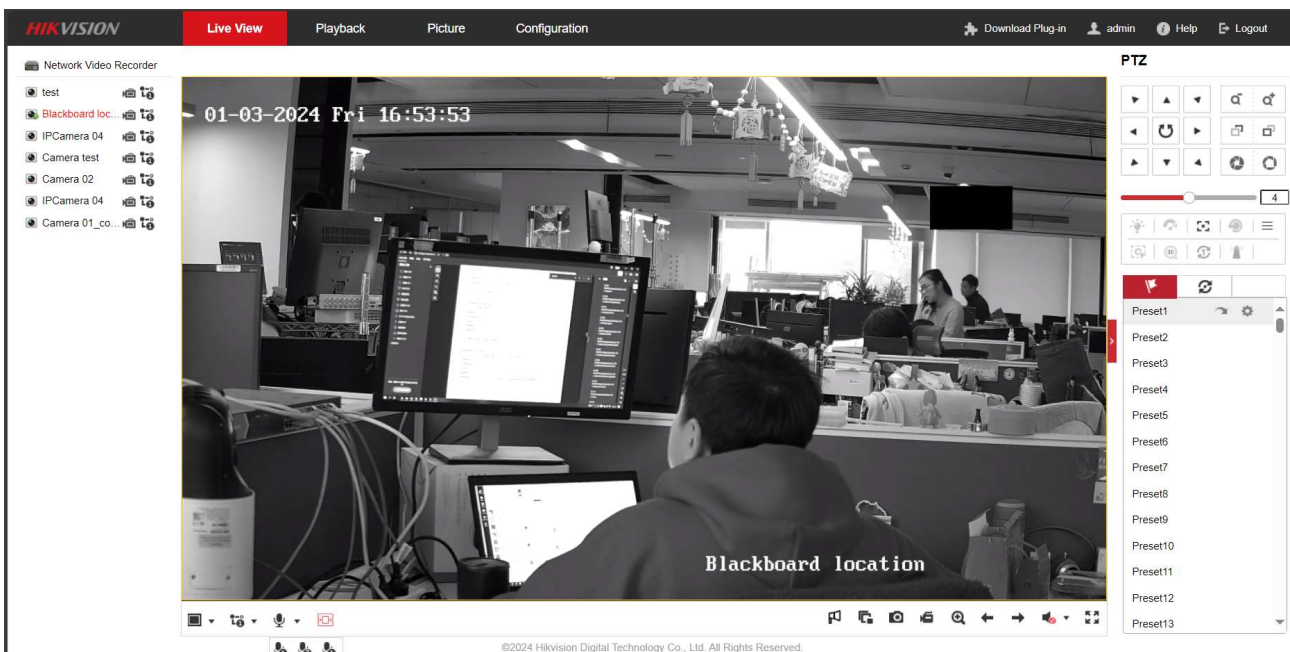
Title:	How to use FM2466 on NVR 5.0	Version:	v1.0	Date:	27/02/2023
Product:	NVR			Page:	10 of 9



Two-way audio in WEB GUI:

User need to make sure his PC has MIC device and MIC authority is allowed for WEB to access before he continues with this operation.

Click MIC icon on the bottom of the liveview page and choose the last shown MIC icon:



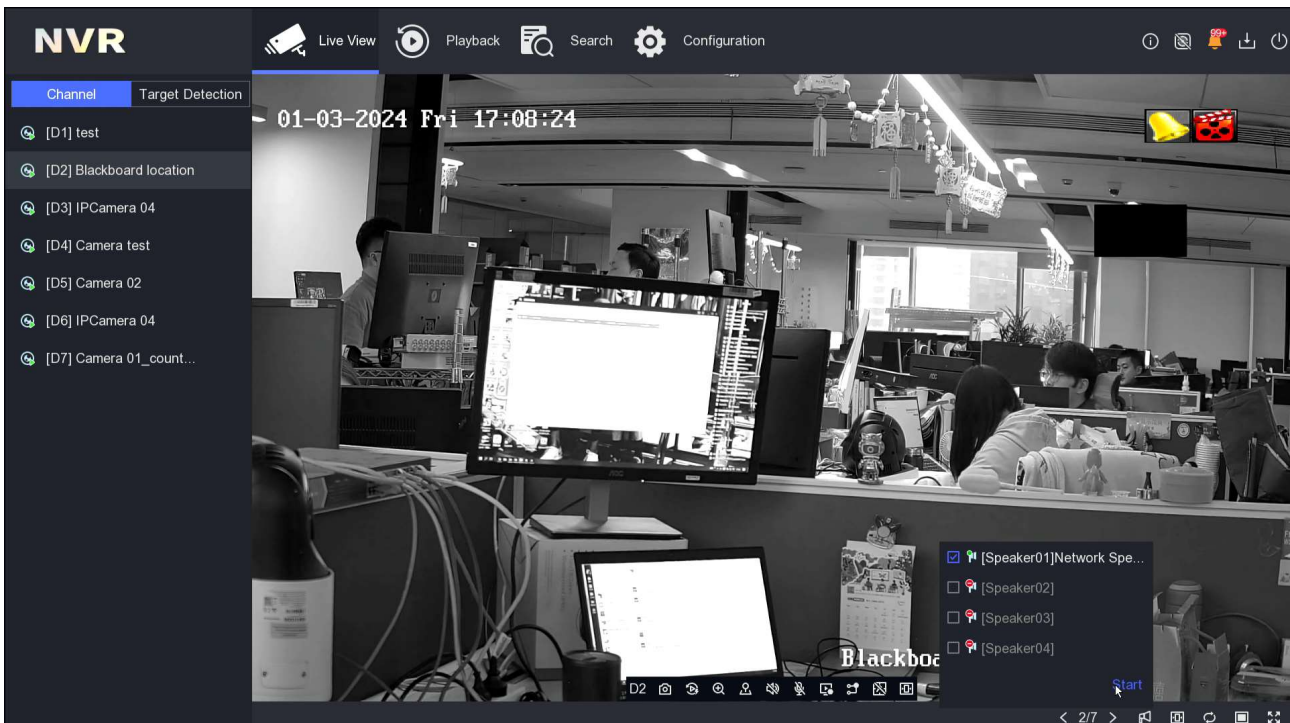
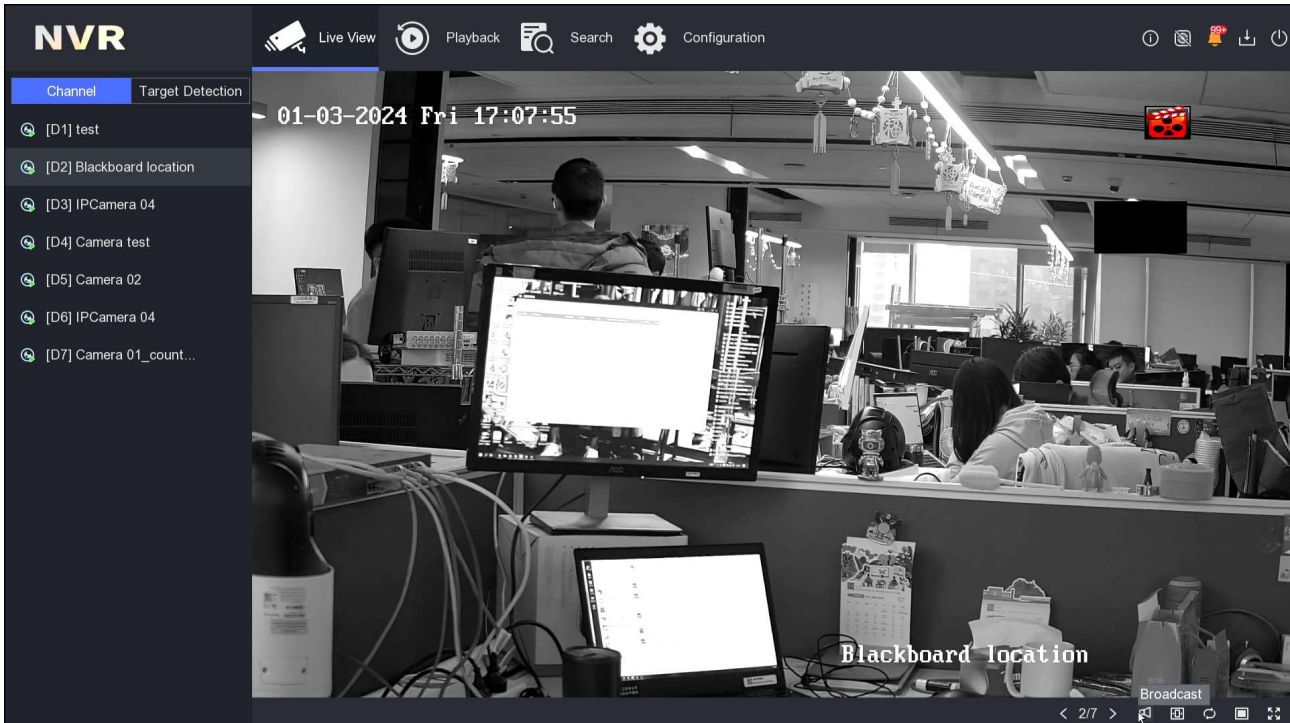
The first two MIC icon is used to two-way audio with NVR Local GUI on HDMI or VGA.

The last MIC icon is used to two-way audio with IPC or IP Speaker(if the IP Speaker is linked to IPC, the priority is to two-way audio with IP Speaker).

Title:	How to use FM2466 on NVR 5.0	Version:	v1.0	Date:	27/02/2023
Product:	NVR			Page:	11 of 9

3. one-way broadcast:

User must connect MIC to local Line-In and Speaker to local Line-Out and click 'Broadcast' on liveview page to start one-way broadcast:



User can choose multiple IP Speaker to one-way broadcast together.

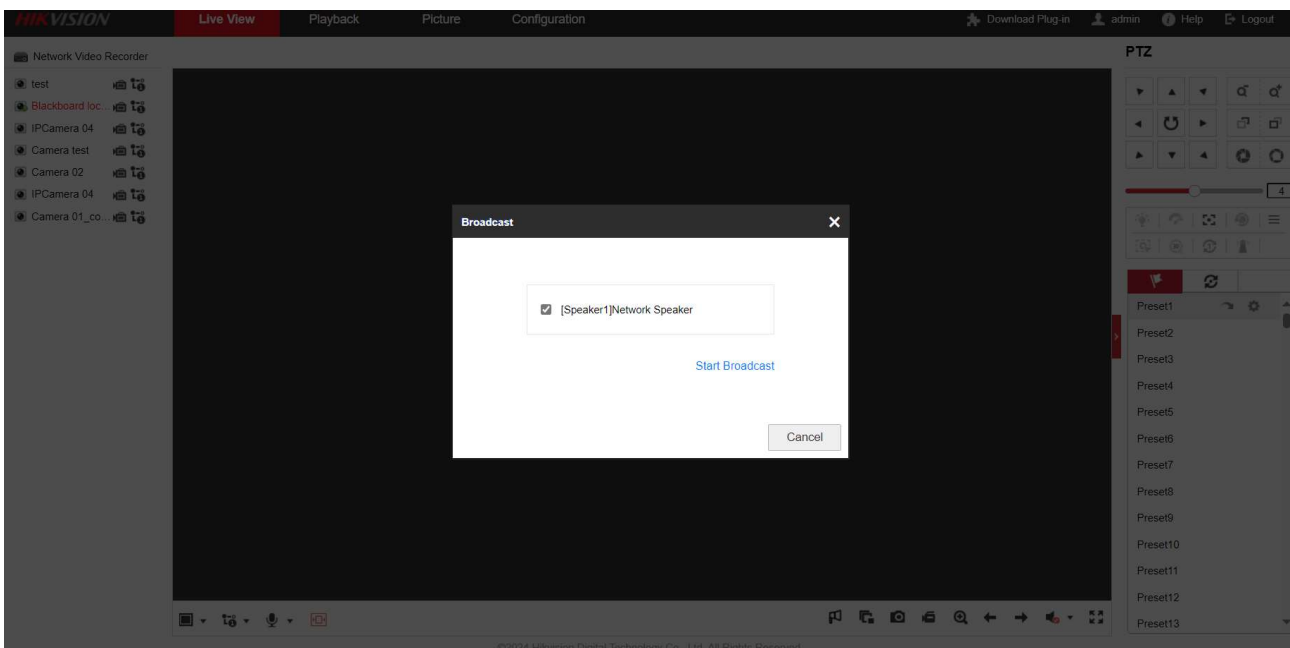
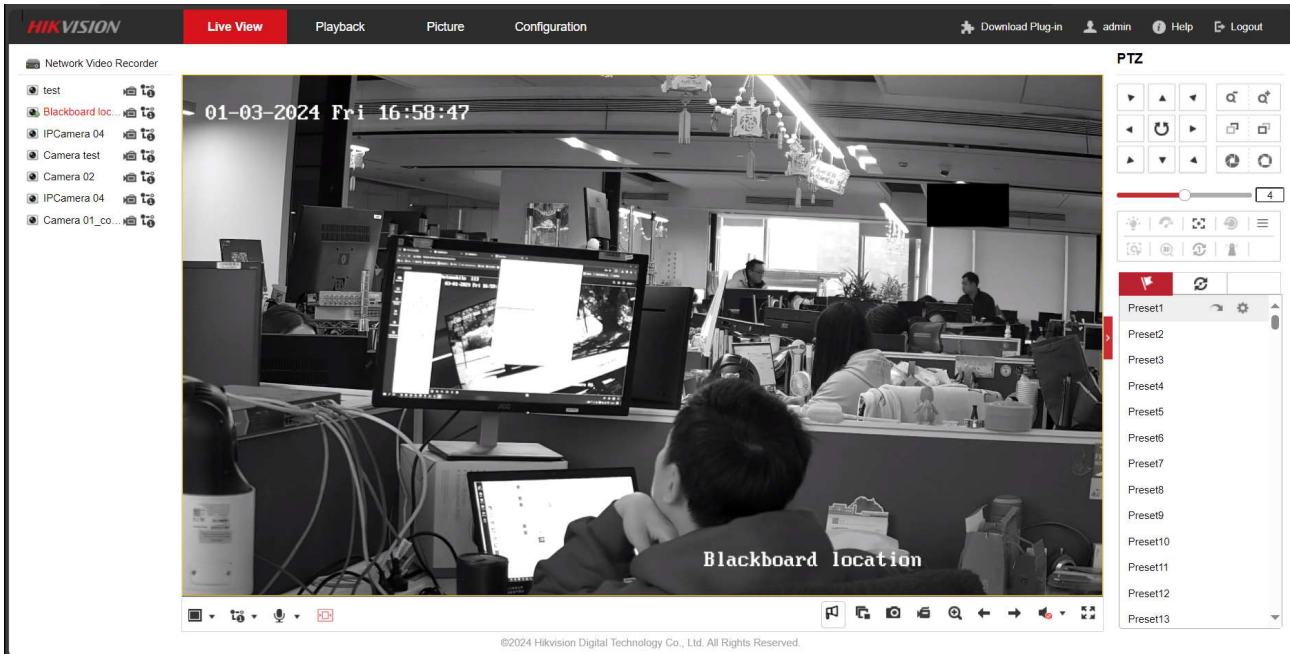
One-way broadcast on WEB GUI:

User need to make sure his PC has MIC device and MIC authority is allowed for WEB to access

Title:	How to use FM2466 on NVR 5.0	Version:	v1.0	Date:	27/02/2023
Product:	NVR			Page:	12 of 9

before he continues with this operation.

User can use the Speaker Icon on the bottom of the liveview page and click it to start one-way broadcast:

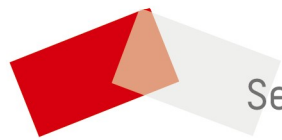


User can choose multiple IP Speaker to one-way broadcast together.

Title:	How to use FM2466 on NVR 5.0	Version:	v1.0	Date:	27/02/2023
Product:	NVR			Page:	13 of 9

Notes:

- 1) Two-way audio and one-way talk have the same priority, while event linkage audio has lower level priority. Hence, two-way and one-way audio can interrupt event linkage audio, and event linkage audio cannot interrupt one-way and two-way audio.**
- 2) For now users cannot upgrade speaker via NVR.**
- 3) Now the name of audio file uploaded cannot be Chinese.**
- 4) Speaker's audio cannot store in NVR.**



See Far, Go Further