

# How to Add IP Speaker to iVMS-4200

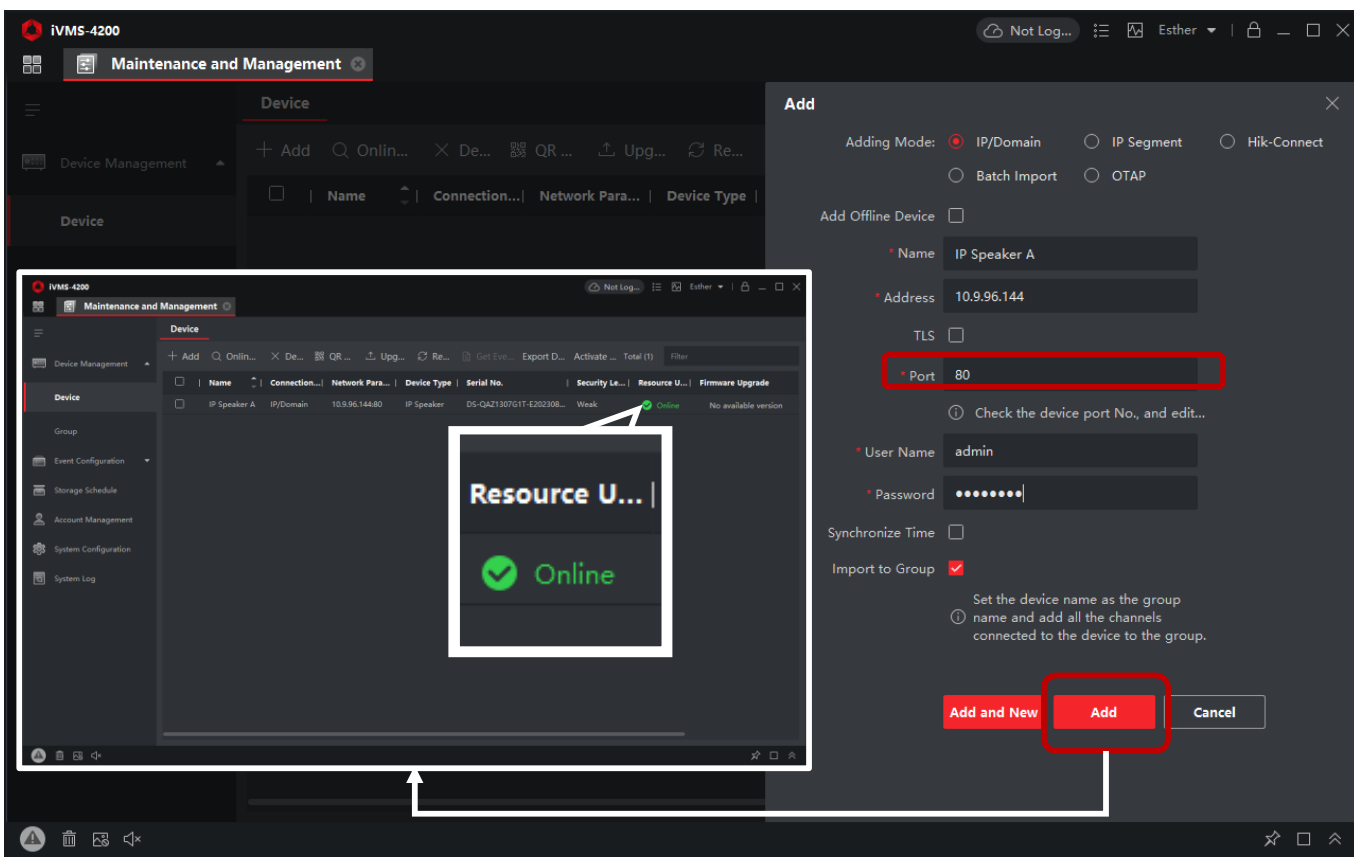
➤ The following will introduce how to add IP Speaker to iVMS-4200, and we will briefly introduce the functions of interface buttons.

☐ Take DS-QAZ1307G1T-E as an example.

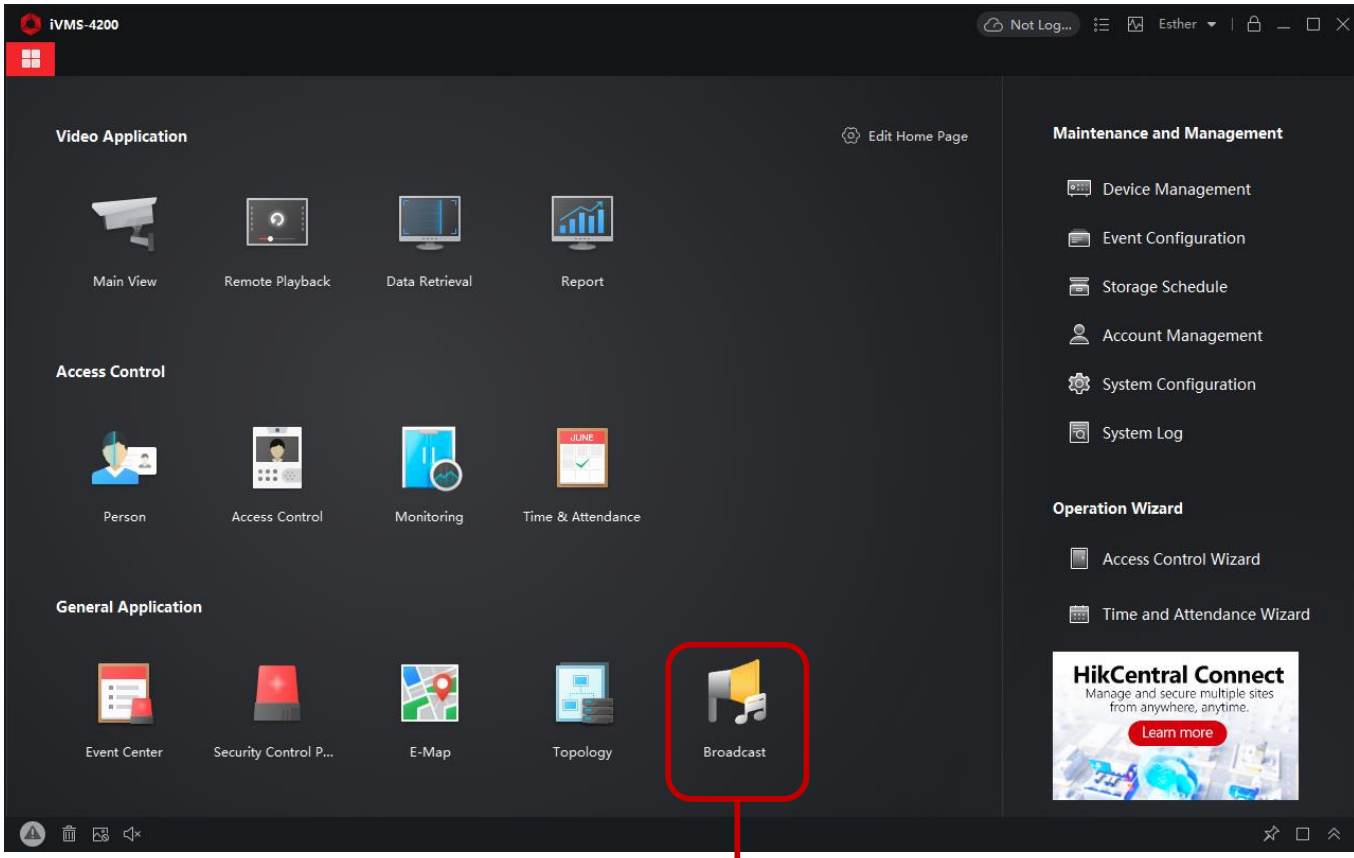
## 1 Add IP Speaker to iVMS-4200.

1. Update iVMS-4200 version to 3.11.0 or above
2. Turn to Device Management and click add
3. Set **Port as 80** and enter necessary details

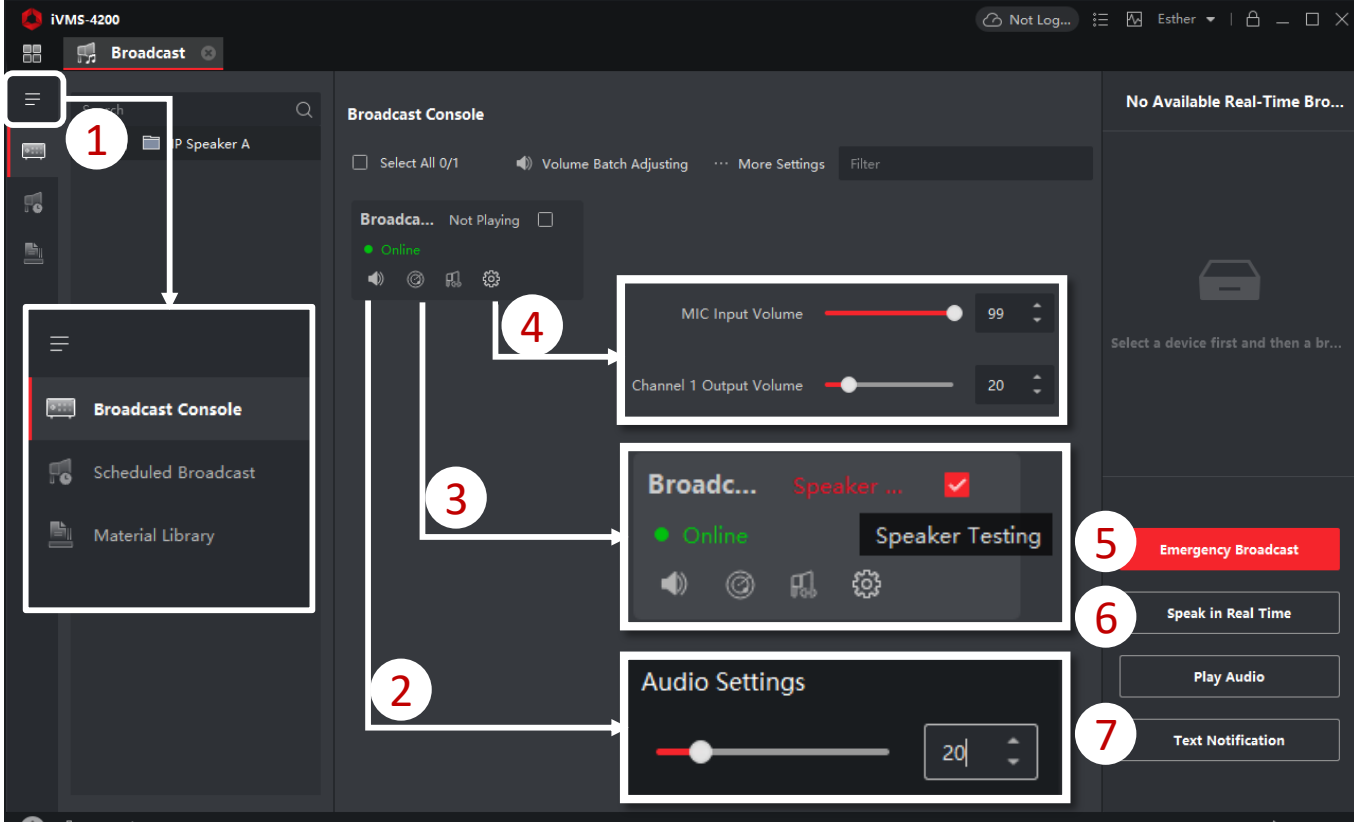
After adding successfully, Resource Usage Status is online.



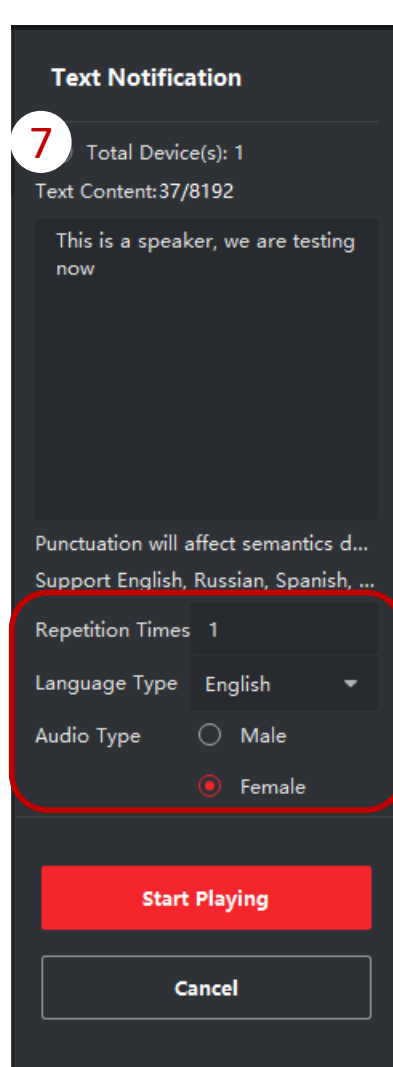
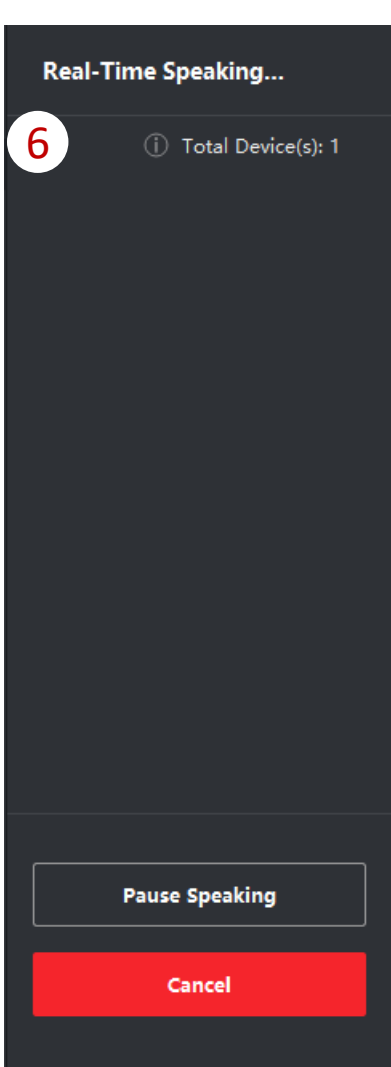
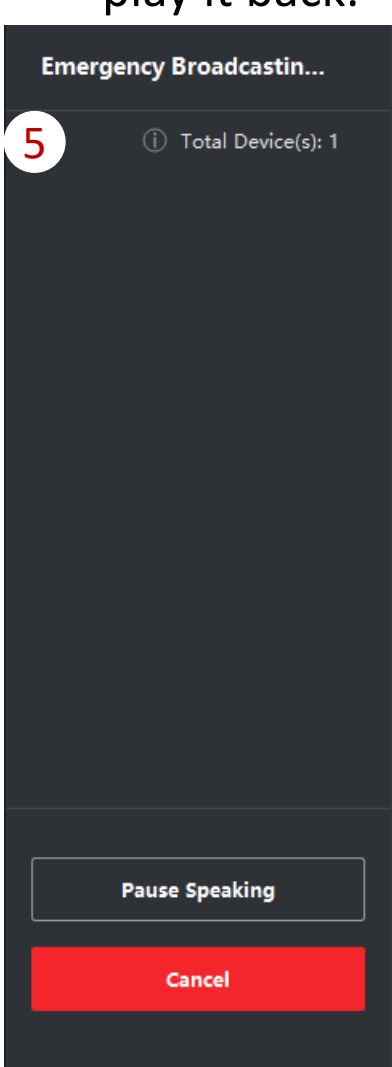
## 2 The functions of interface buttons on iVMS-4200 of speaker. Turn to General Application > Broadcast



1. Fold/Unfold: fold and unfold broadcast menu
2. Audio Setting: adjust volume of the speaker
3. Speaker Test: display audio to test
4. More Settings: adjust MIC Input & channel output volume



5. Emergency broadcast: Click to speak
6. Speak in Real Time: It is similar to emergency broadcast, but the priority is lower than emergency broadcast.
7. Text Notification: Convert the input text into audio and play it back.



It supports switching languages, setting playback times, and setting male or female voices.